

ST ANDREWS'S WORKS

A Co-Living Hub



Site -
St Andrew's Works, situated at 197-243
Pollokshaws Road in Glasgow,



Site visit



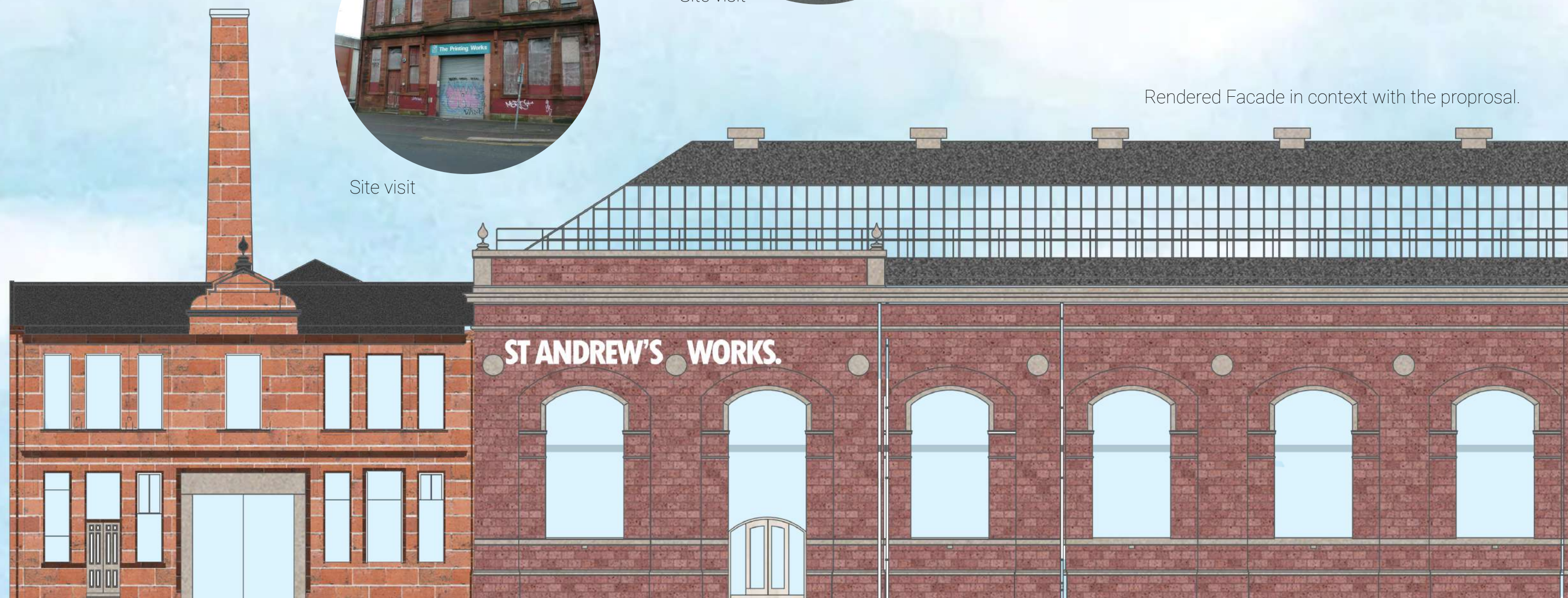
Site visit



Site visit

St. Andrew's Works, located at 197 Pollokshaws Road, was originally built in 1899 as an electricity generating station by Glasgow Corporation. It supplied direct current electricity to the city until the 1930s when more efficient power stations made it unnecessary. In 1937, the building was repurposed as the St. Andrew's Printing Works, where it produced documents for the city's government. The printing works operated until the 1990s, after which the building became vacant and fell into disrepair, with only the southern section continuing to serve as an electrical substation. Despite its decline, the building was designated as a Category B listed structure in 1986, preserving its historical significance.

Rendered Facade in context with the proposal.



Set within a 19th-century factory warehouse in Glasgow, this proposal imagines an intergenerational co-living space for the year 2035. Designed to address rising living costs and social isolation, it provides a safe, accessible environment for a diverse adult community; singles, couples, middle-aged, and retired individuals. Drawing inspiration from bubbles, the design embodies both independence and connection. Rounded forms define private units and shared spaces, fostering a sense of community without compromising personal boundaries.

The original trusses and expansive atrium are preserved and reactivated, allowing light to flood through and linking past structure with present purpose. This is more than adaptive reuse - it is a meaningful architectural dialogue that respects heritage while envisioning a socially responsive future. The project transforms a historic industrial space into a contemporary model of urban living; rooted in empathy, shaped by necessity, and sustained by community.



Why Choose Co-Living?

- KEY-

1- Entryway

2 - W/C

3- Kitchen

4- Dining/Living area

5- Music Studio

6- Yoga Studio

7- Lift
- 8- Standard Bedroom

9- Accessible Bedroom

10- Two storey Bedroom

11- Laundry Unit

12- Storage

13- Stage

14- Lounge

15- Reception

16- Stairs

- Affordability:

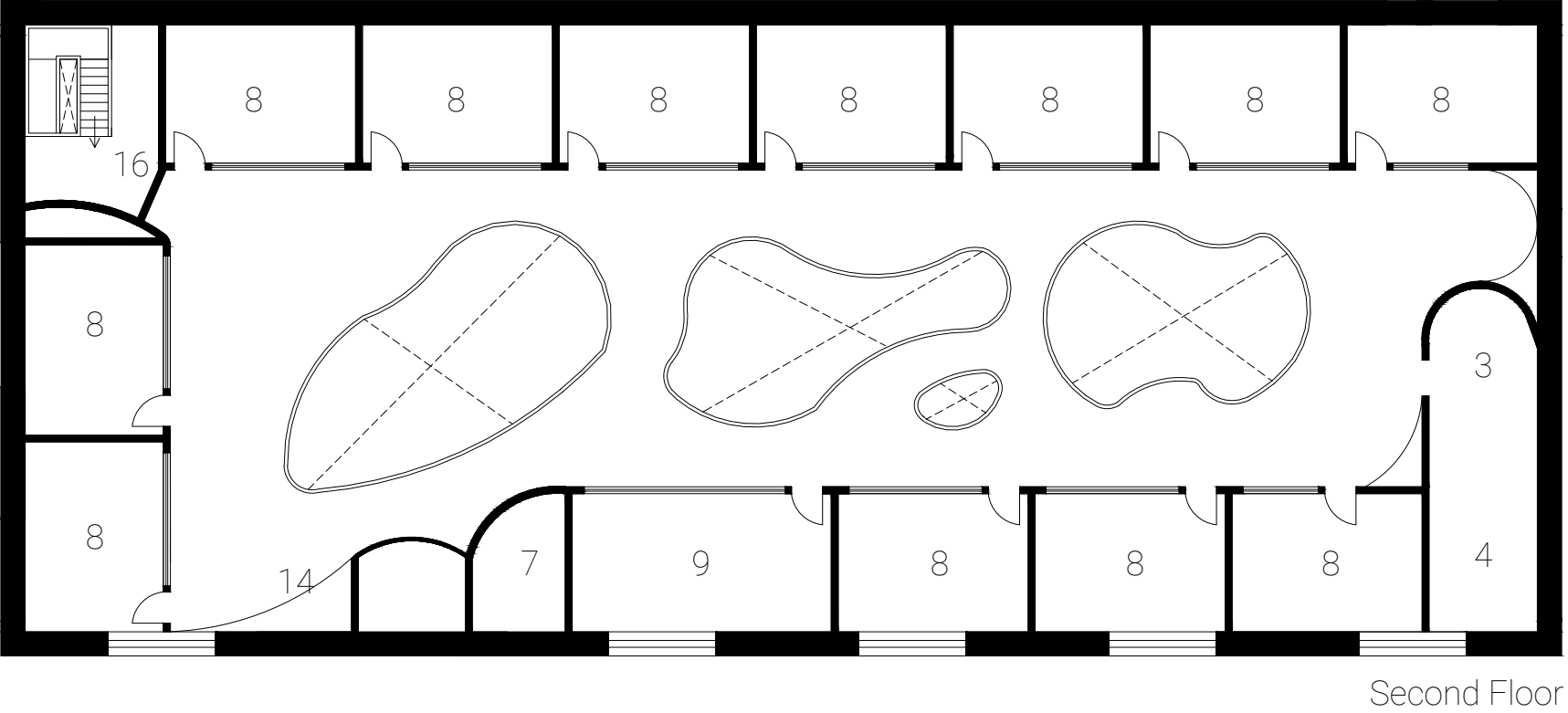
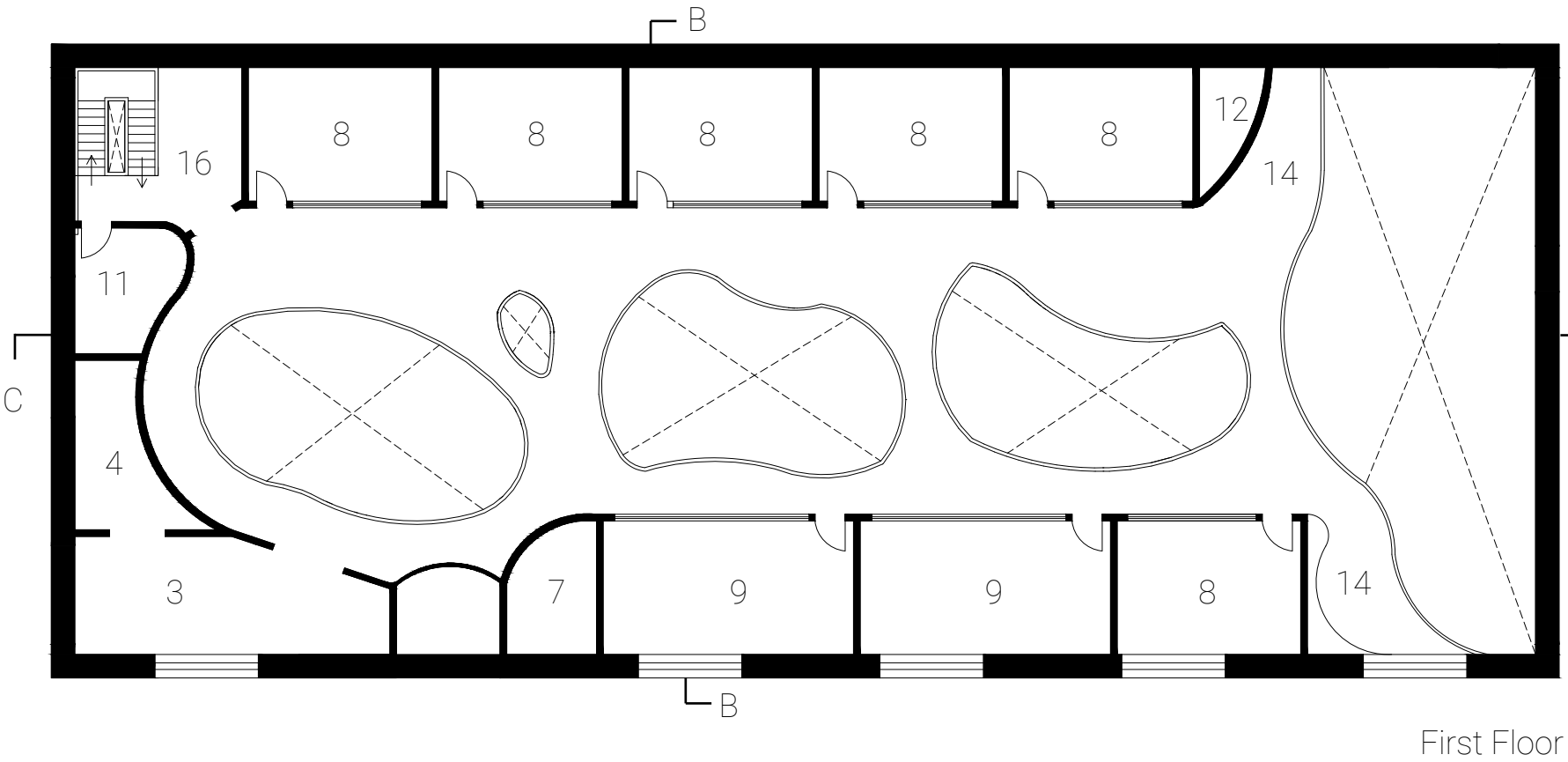
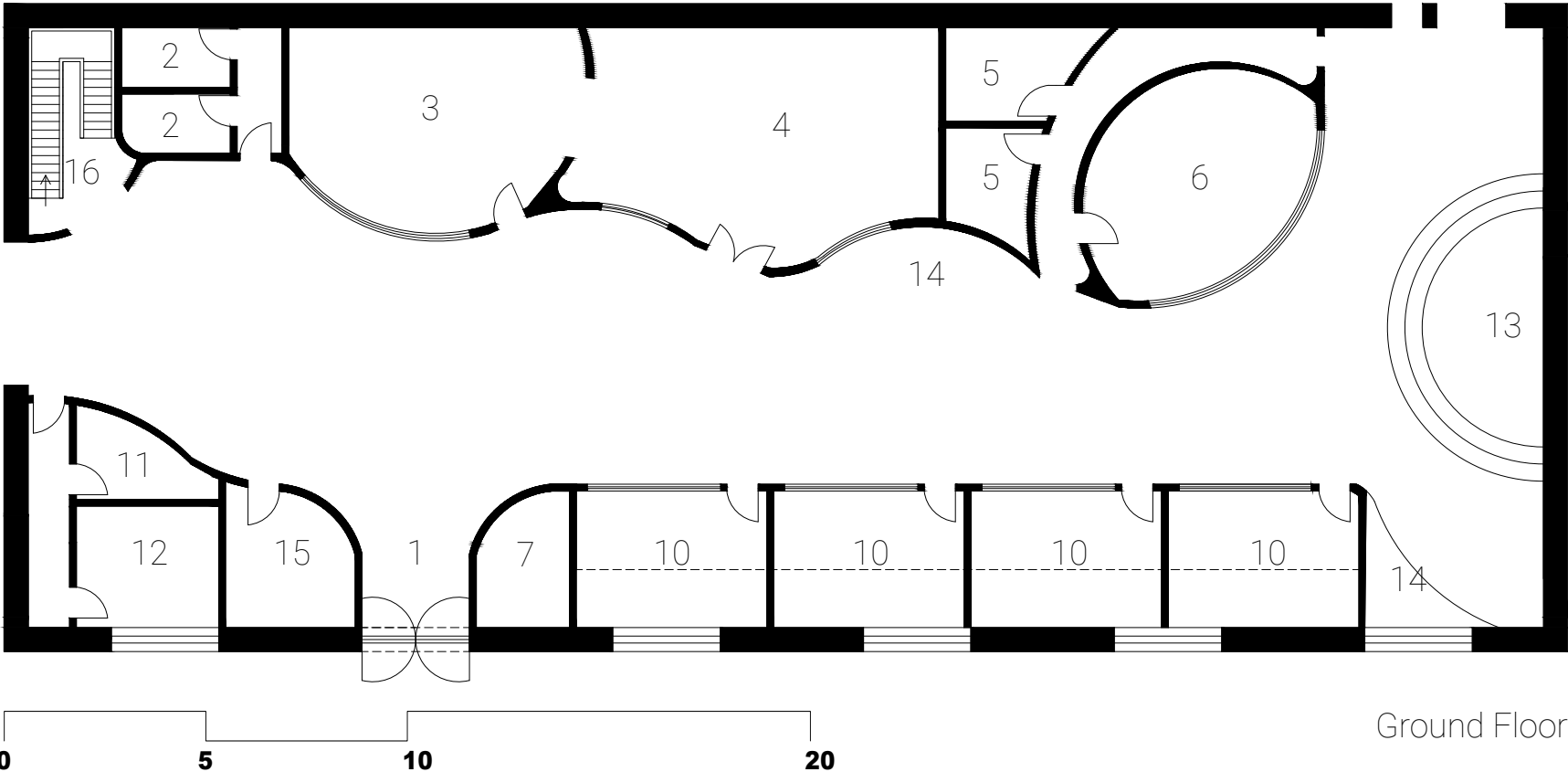
Rising urban housing costs make co-living an attractive option for individuals seeking cost-effective living arrangements.
- Community Building:

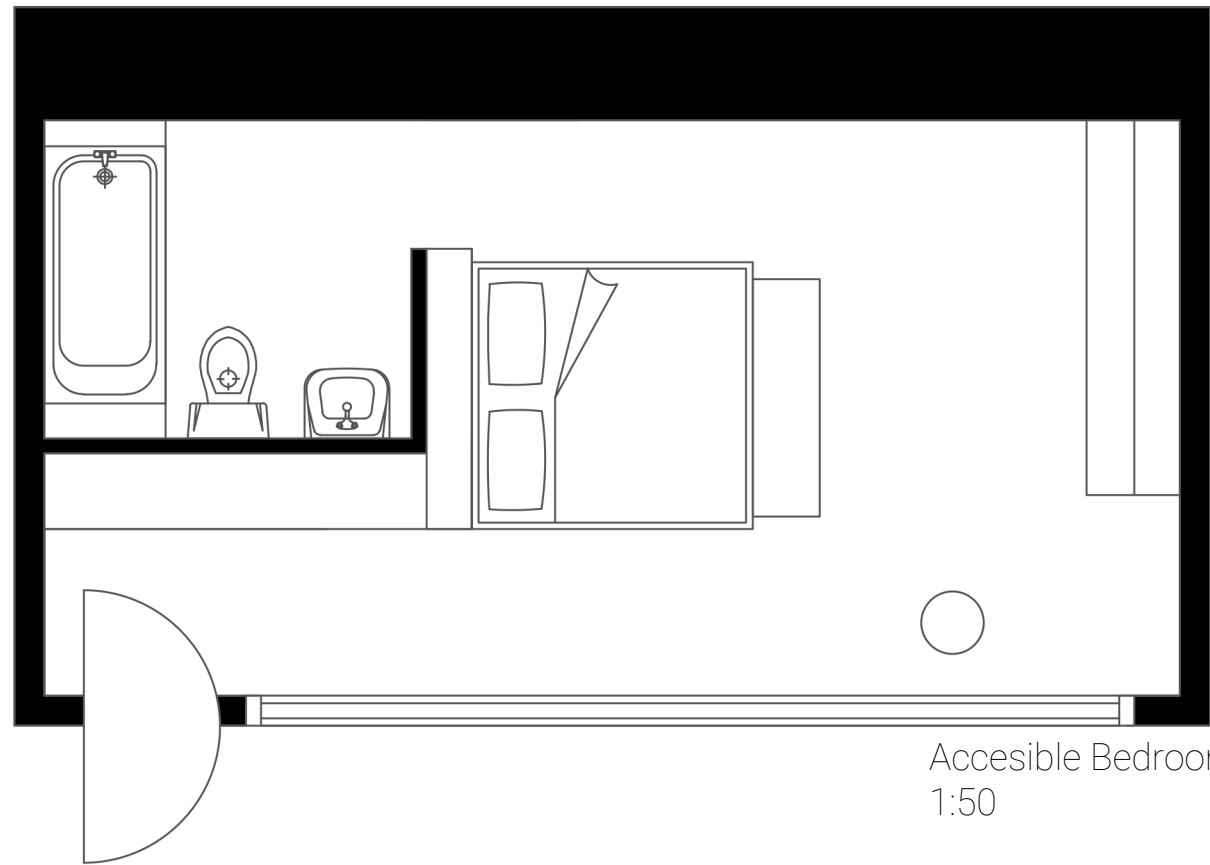
Co-living fosters a sense of community, offering opportunities for social interaction and support among residents.
- Flexibility:

Many co-living arrangements offer flexible lease terms, accommodating the transient lifestyles of modern professionals.
- Shared Amenities:

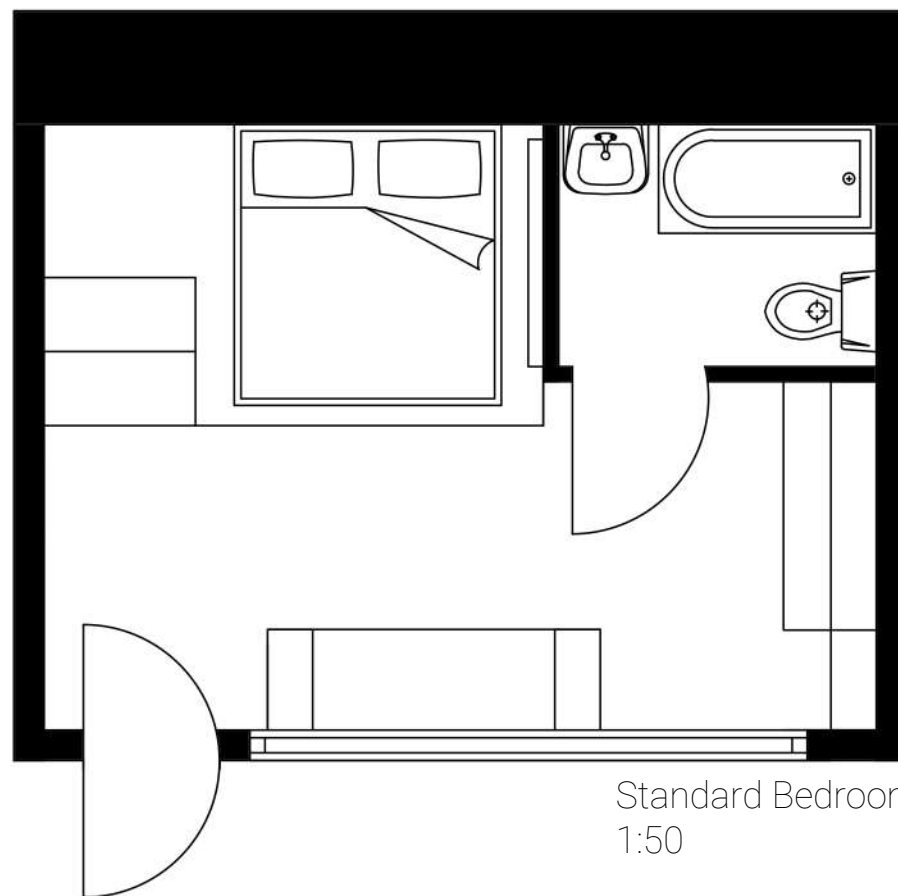
Residents benefit from shared amenities such as kitchens, lounges, and workspaces, enhancing convenience and reducing individual expenses.
- Sustainability:

Co-living promotes sustainable living by reducing per capita resource consumption through shared spaces and utilities.





Accessible Bedroom
1:50



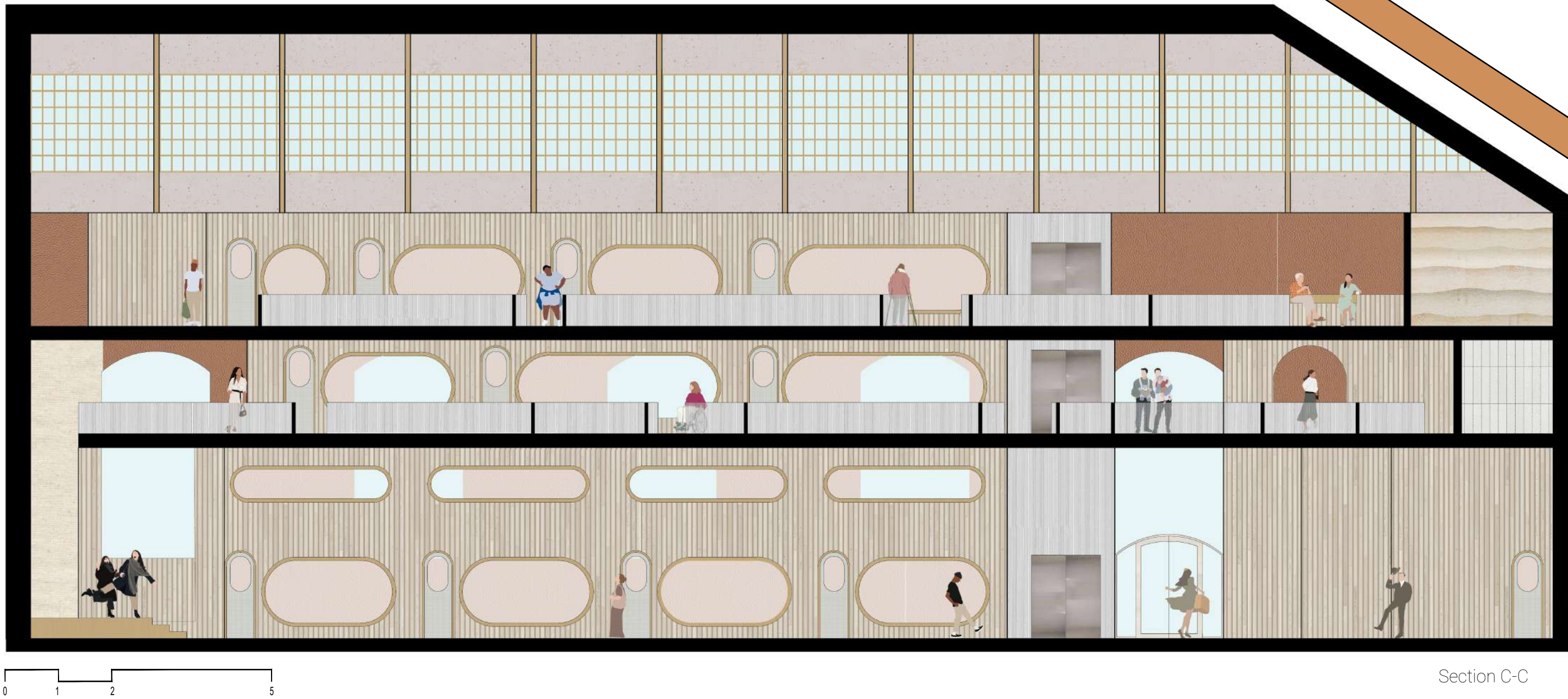
Standard Bedroom
1:50



Section B-B



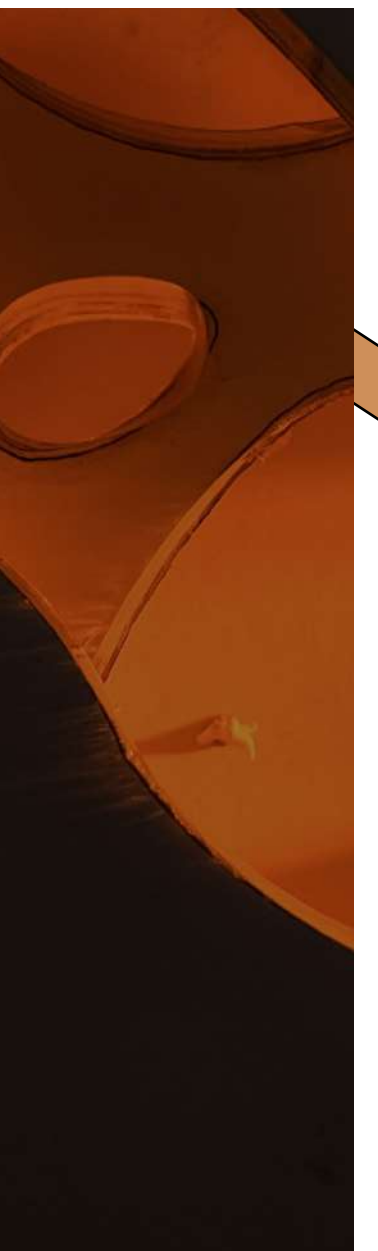
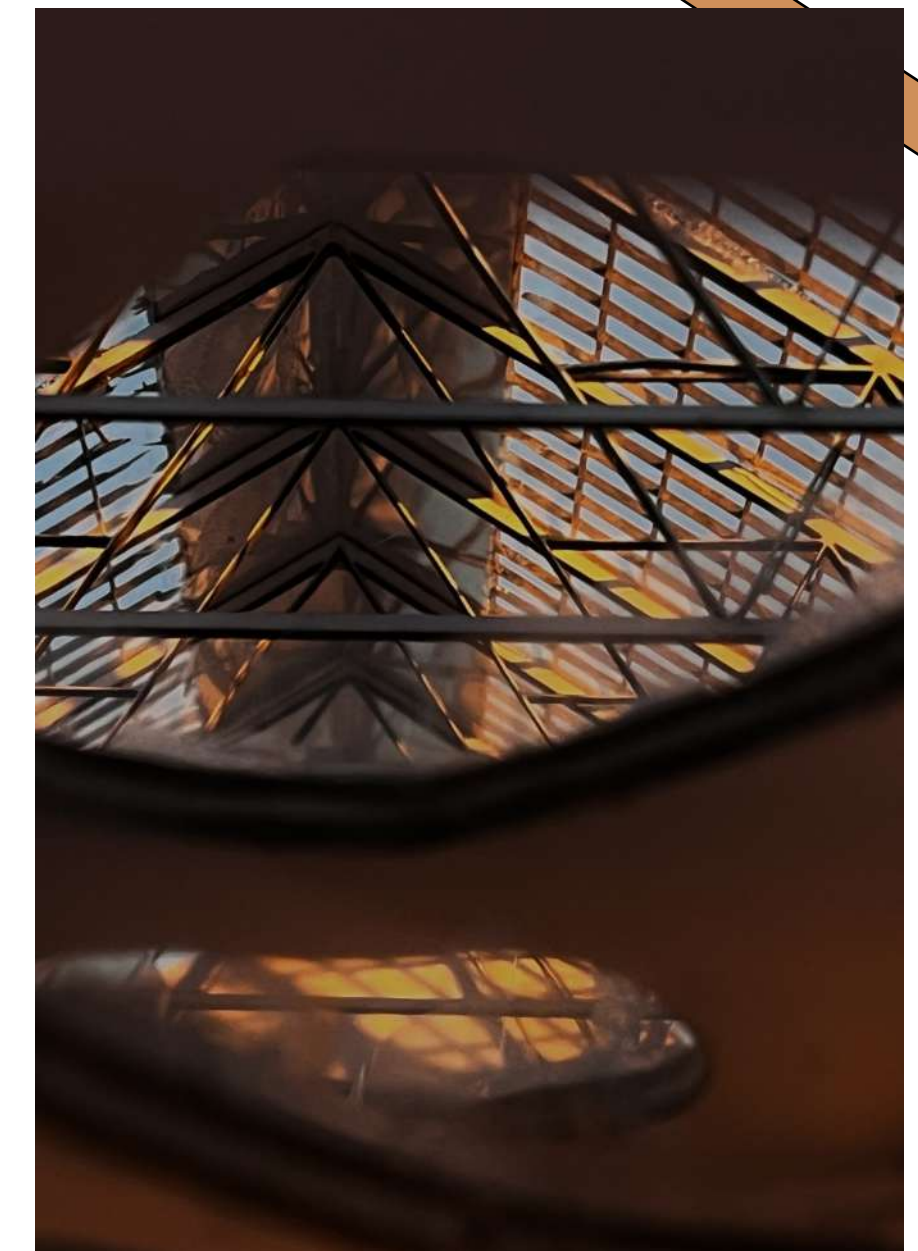
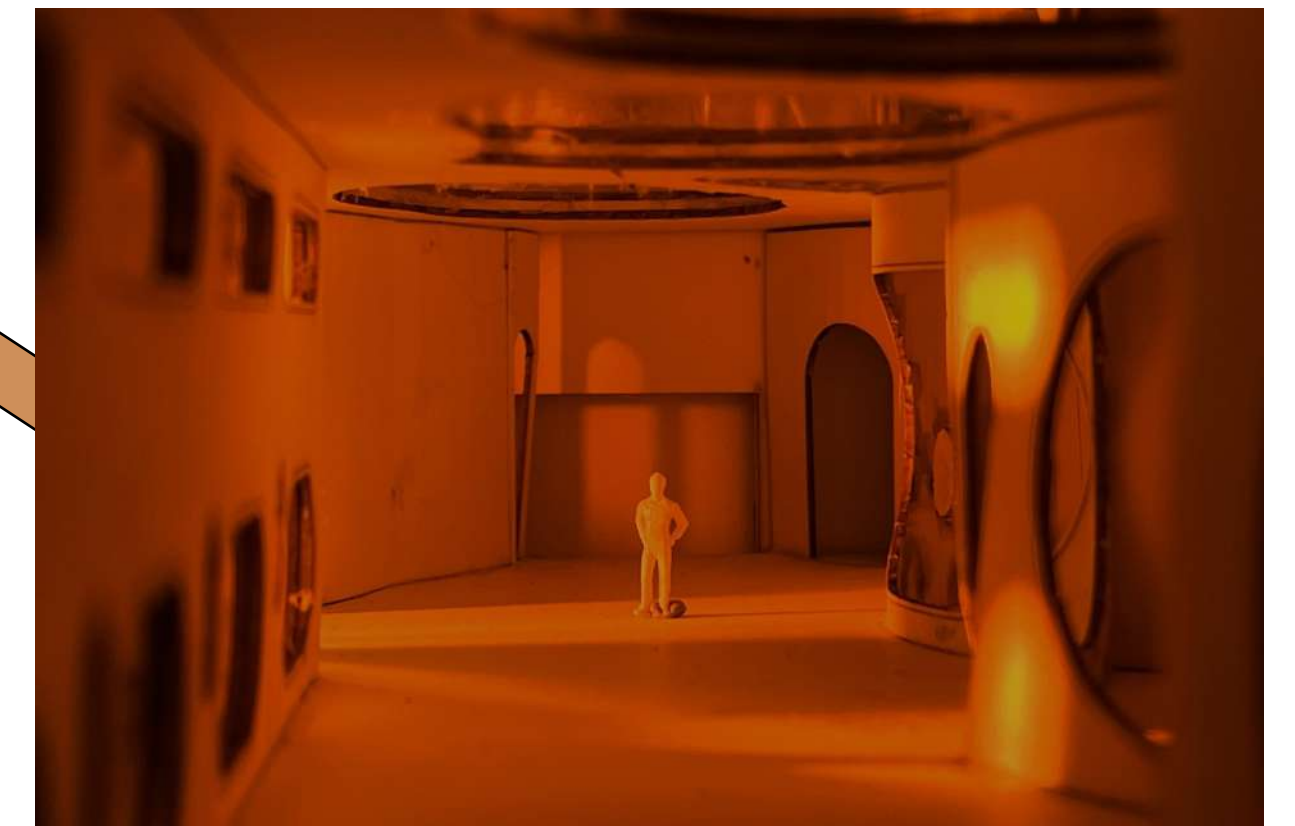
Looking onto yoga studio and double height bedrooms



Section C-C



On first floor observing the sun kiss the main communal areas



1:100 scale model