

# Binny In Bloom

**Binny in Bloom** is a project dedicated to creating a therapeutic centre for women facing breast cancer, a place where healing extends far beyond medicine. Nestled in the peaceful countryside of West Lothian and rooted in the once-loved Binny House, the retreat offers a nurturing environment that supports both emotional and physical wellbeing.

The design concept **celebrates the scars of Binny House** itself. Its rich character, imperfections, and history are embraced, highlighting that change is a given with breast cancer and the scars left behind should be worn with pride. The process of making became central to this idea, leading to an exploration of cast forms with the intentions of using salvaged elements from the building. Inspired by Rachel Whiteread's work, an artist who produces sculptures that typically take the form of casts. My own objects were cast and re imagined, preserving every mark and imperfection.

## Change is inevitable, but the results are beautiful

Binny House has long been associated with care and compassion. Originally, the estate was gifted to a soldier named William Binnock in recognition of his bravery. After passing through many hands over the years, it was eventually left in a will to become a care home in 1987. In 2003, renovations began to transform the house into Huntercombe Hospital. Throughout its history, Binny House has remained a place of sanctuary and peace.

Through thoughtfully tailored therapies and restorative activities, Binny in Bloom becomes a sanctuary where women can rediscover the small joys of life within a supportive community. The centre offers both public and private areas, through spaces for connection, shared healing, and moments of independent reflection. I found it important to recognize the value of both community support and individual healing.



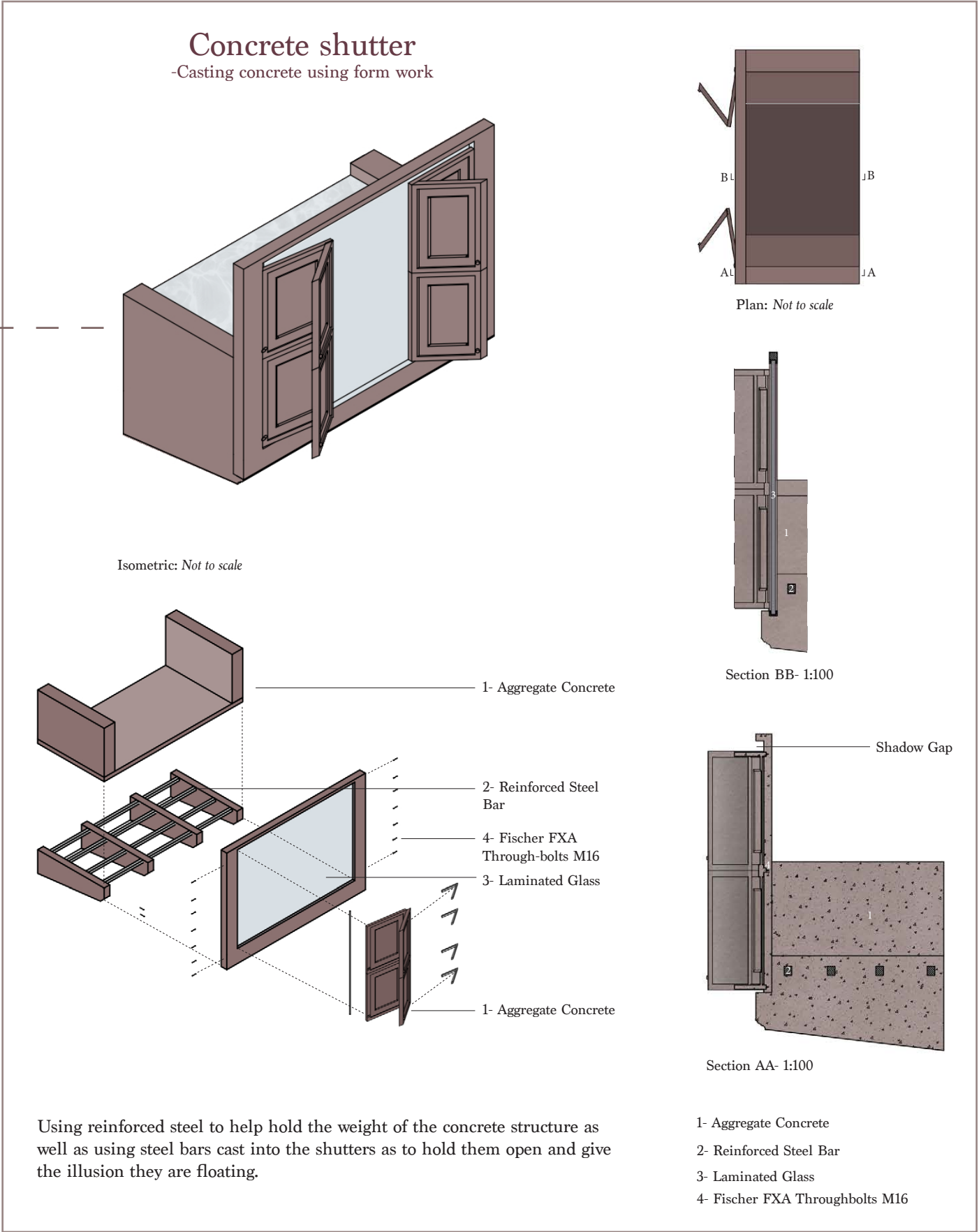
Binny House



## Concrete Shutters

As you enter Binny House, you're immediately greeted by a striking new intervention, a rooftop pool that extends into the foyer. Here, cast concrete shutters reflects the memory of the original Binny House, reimagined from its historic elements. Permanently open, these shutters symbolize an **embrace of change**, welcoming this new space within the old. They stand as a metaphor for the women who pass through here, transformed, resilient, and always beautiful. **Honoured and welcomed just as they are.**

Foyer: Looking up to the rooftop pool



1:5000 Site Location- Binny House, Ecclesmachan, West Lothian



## Key Material

The key material used in this project is concrete. Chosen for its ability to hold delicate textures in a strong, lasting form. It symbolizes resilience, showing that what was once fragile can be transformed into something solid, powerful, and enduring. Through this, the space itself becomes a metaphor for life during and after treatment. A celebration of survival, change, and new strength. shown within this visual, where an original fireplace has been cast and left in its original position to **celebrate these scars** throughout the house.

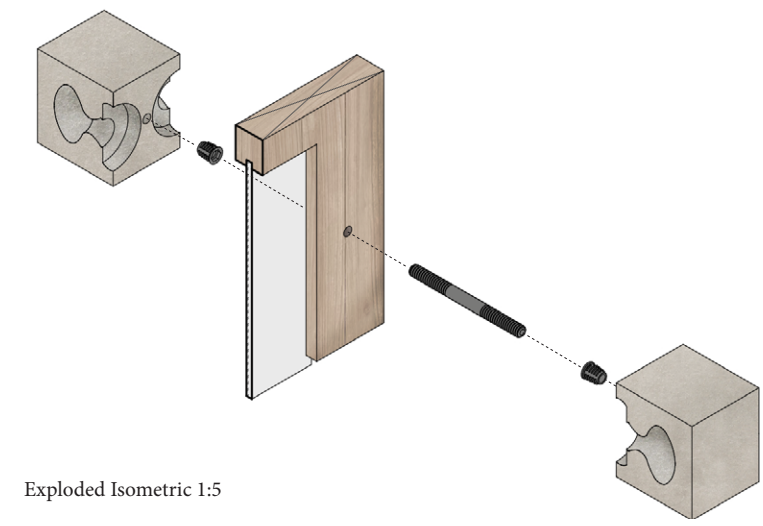
Group Support



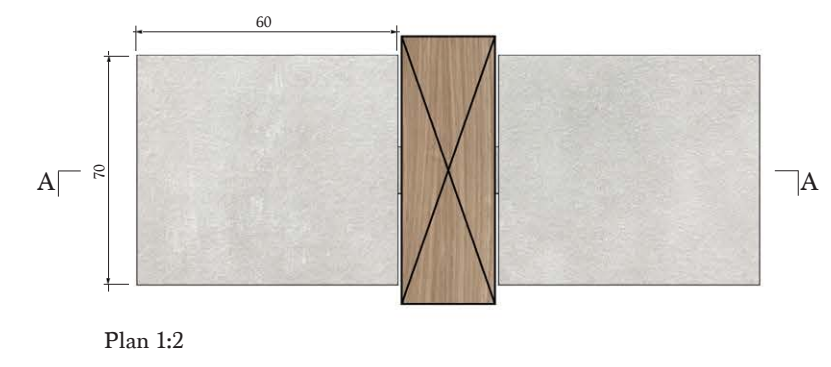


## The Recasting of Negative Space

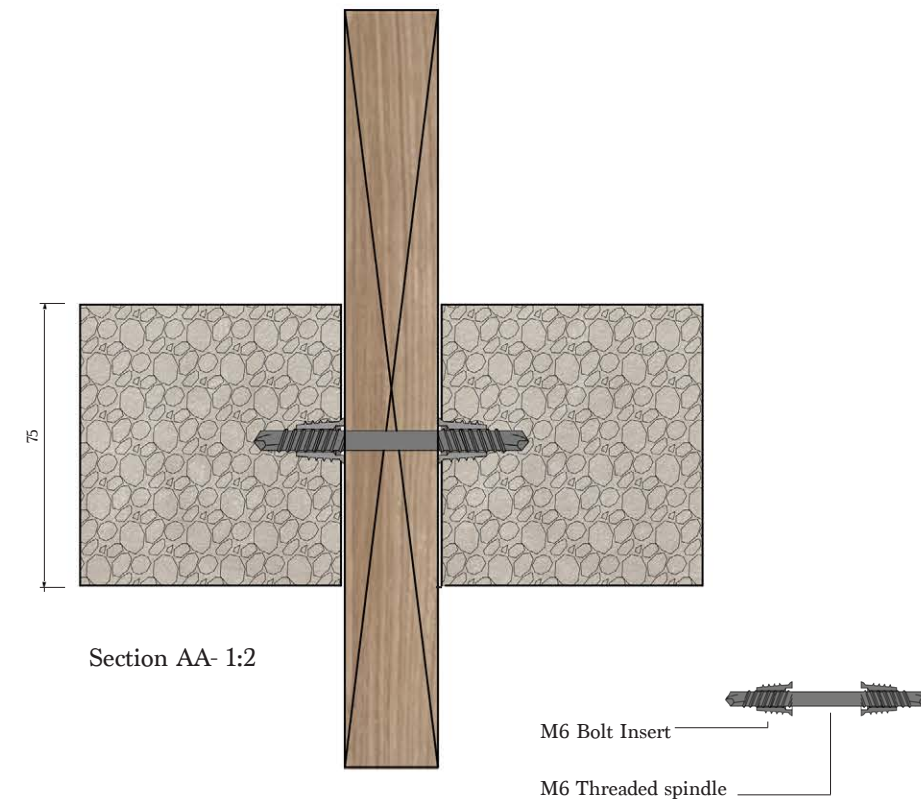
Celebrating the scars of binny house became an important concept for this project and using a door handle to show this was fitting choice. A door handle may seem like a small trinket within a huge space, but the making process is one of detail and meaning. The casting of an old, salvaged doorknob into a new handle through creating a negative mould of the original form, the handle becomes a metaphor for embracing change and highlighting resilience. It's different, but it still holds the memory of its original form. Much like with breast cancer patients, their bodies are changing however, the change represents strength in renewal. This door handle is small but represents a huge act of transformation.



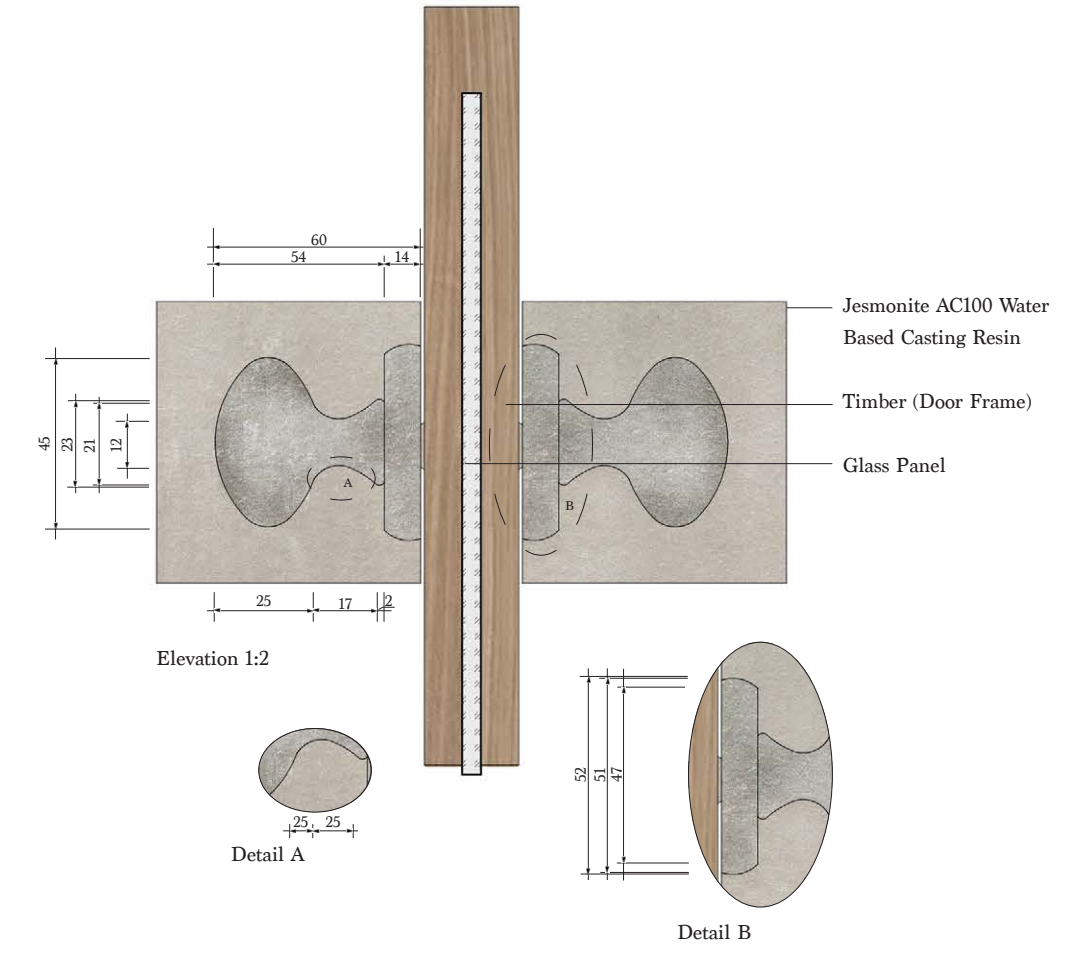
Exploded Isometric 1:5



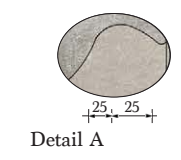
Plan 1:2



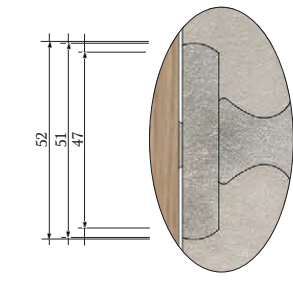
Section AA- 1:2



Elevation 1:2



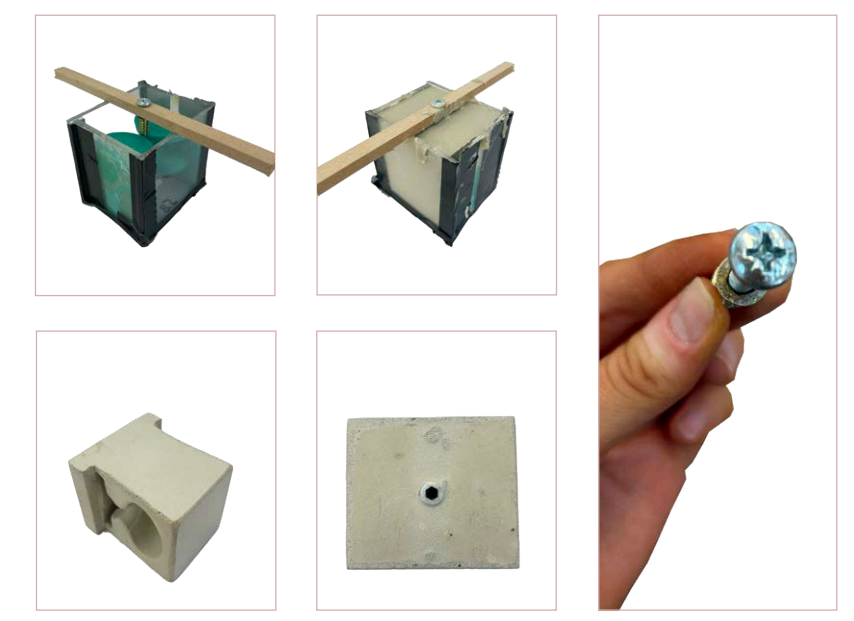
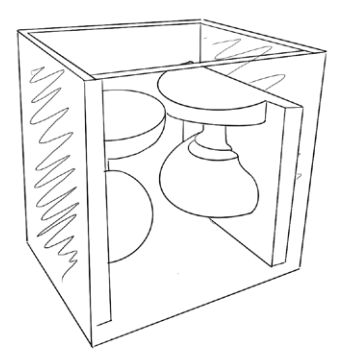
Detail A



Detail B

## Final Design

By using concrete as my main material, it solidifies this narrative of the scars being permanent yet strong. By casting something once delicate into a material as solid and heavy as concrete, I am honouring the old forms and giving them a new, permanent life, holds every mark, scratch, and imperfection from its past life.



Group Support



Transition Space





Rooftop Pool



Rooftop Pool



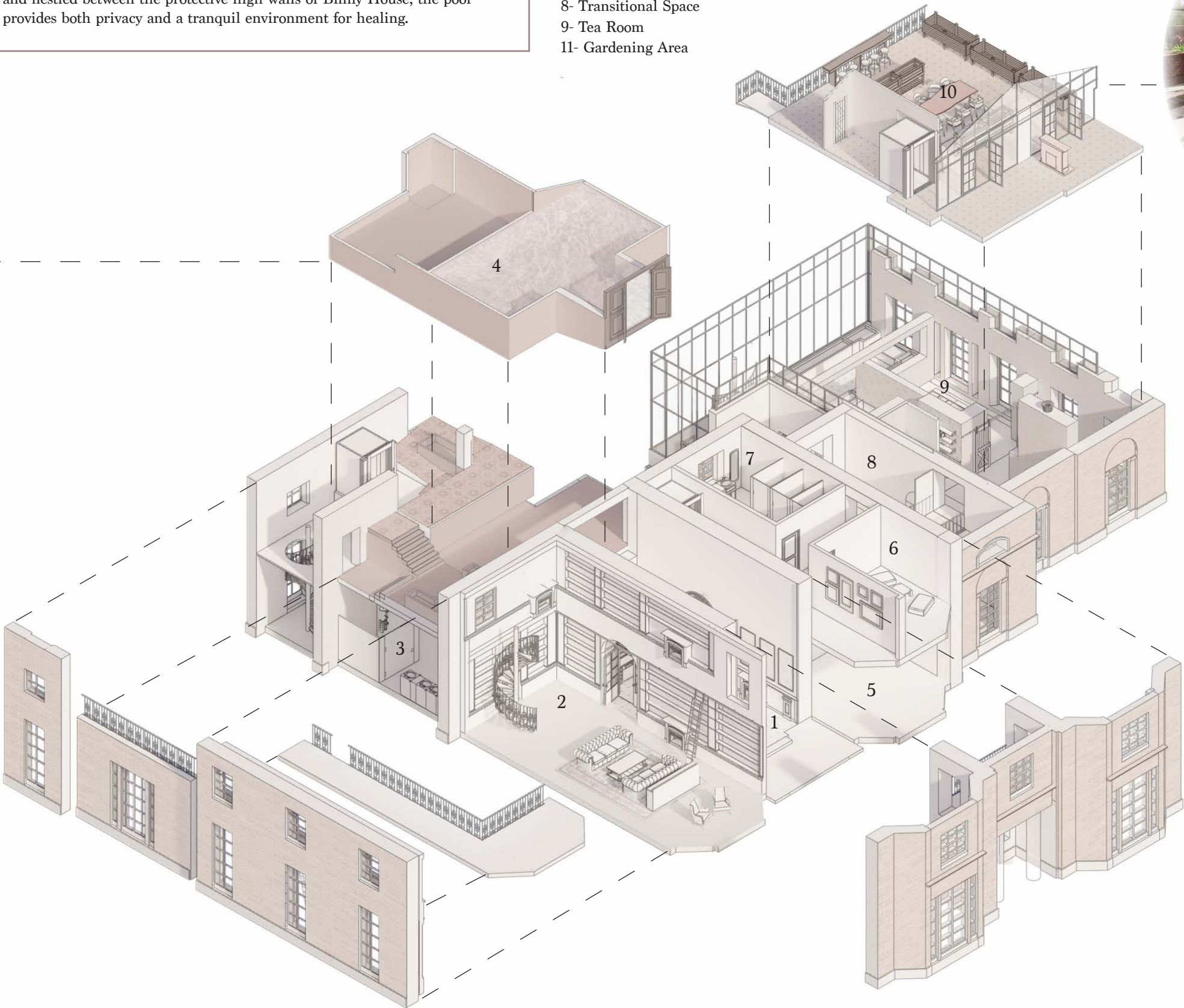
Rooftop Pool

# The Rooftop Pool

One of the most significant additions to Binny House is the rooftop pool, a serene, elevated space designed to support gentle, restorative movement. This pool offers visitors the opportunity to engage in low-impact exercise, ideal for rebuilding strength and improving range of motion, especially for those recovering from mastectomies or lymph node removal. Spanning the rooftop and nestled between the protective high walls of Binny House, the pool provides both privacy and a tranquil environment for healing.

## Key

- 1- Foyer/ Reception
- 2- Group Support
- 3- Changing Room
- 4- Rooftop pool
- 5- Rage Room
- 6- Meditation Room
- 7-Bathroom
- 8- Transitional Space
- 9- Tea Room
- 11- Gardening Area



Exploded Isometric



# The Conservatory Garden

From the very beginning of this project, I knew that a dedicated gardening space had to be included. The act of gardening offers meaningful therapeutic benefits for everyone, but especially for those undergoing treatment. At Binny House, this space spans multiple levels, thoughtfully integrated where the original structure and roof had begun to deteriorate. In its place, a light-filled conservatory has been created, offering the restorative qualities of natural sunlight while filtering out harmful rays.



Section BB



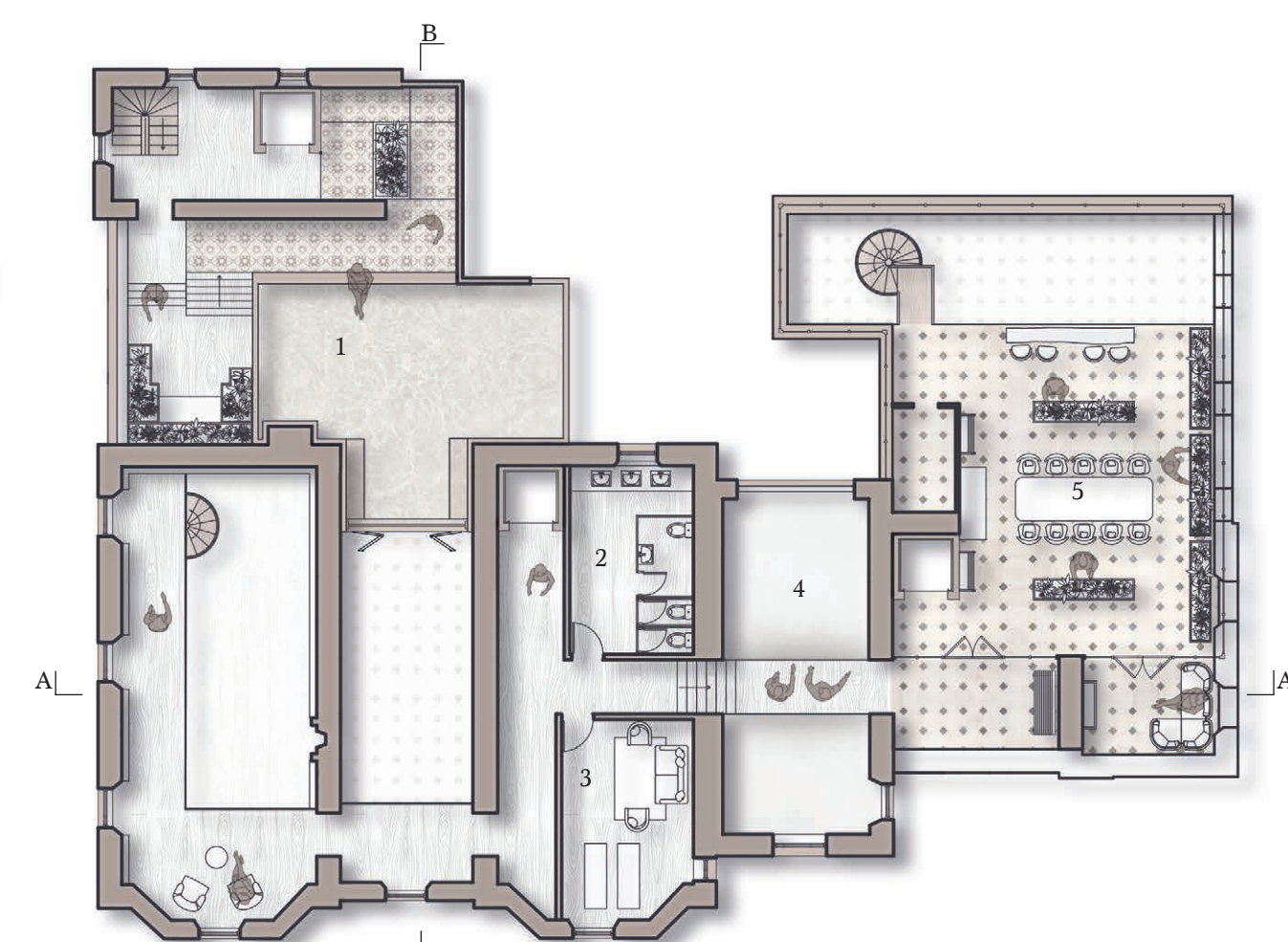
Section AA





## The Conservatory Garden

The newly opened wall of windows floods the space with much-needed natural light, creating a striking contrast against the original brickwork. By making only essential interventions throughout Binny House, the building's historic character has been thoughtfully preserved, allowing its heritage to shine through in harmony with the new additions.



*First Floor Plan*  
 1- Rooftop Pool  
 2- Bathroom  
 3- Meditation Room  
 4- Transitional Space  
 5- Gardening Area



*Ground Floor Plan*  
 1- Foyer/ Reception  
 2- Group Support  
 3- Changing Room  
 4- Storage  
 5- Staff Room  
 6- Office  
 7- Lockers  
 8- Rage Room  
 9- Transitional Space  
 10- Tea Room  
 11- Garden



Tea Room