

# FREEFLOW INTERVENTION

## BRIEF

Design a temporary intervention located in the public courtyard of the Centro Andaluz De Arte Contemporaneo. The intervention should be designed to last for a period of a minimum of 3 months. The intervention should have a theme of food and drink and appeal to the target audience of the explorer archetype.

## LOCATION

Seville



## SITE

Centro Andaluz de Arte Contemporaneo



## OBSERVATIONAL SKETCH SEVILLE

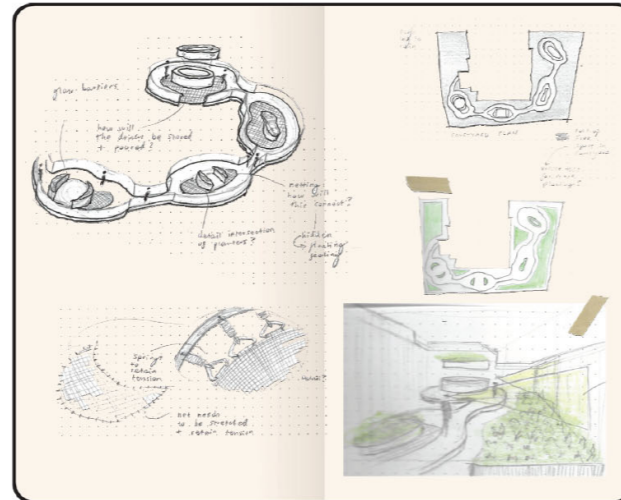


CALE MATOS GARGO



## RESEARCH

Research into materiality in Seville. Layers of textures, colours, surface finishes and details all join together to create magnificent visual statements in the urban landscape. An observation from Seville's materials is despite the large range and styles they all seem to be consistent in having a raw imperfect character to them that which is uniquely identifiable.



## DEVELOPMENT

Sketches exploring concept of freedom and how to represent this within the design intervention.



## 01 ENTRY



## 02 CONTEMPLATION SPACES

Unique spots to think and take in new perspectives of newly discovered flavours.



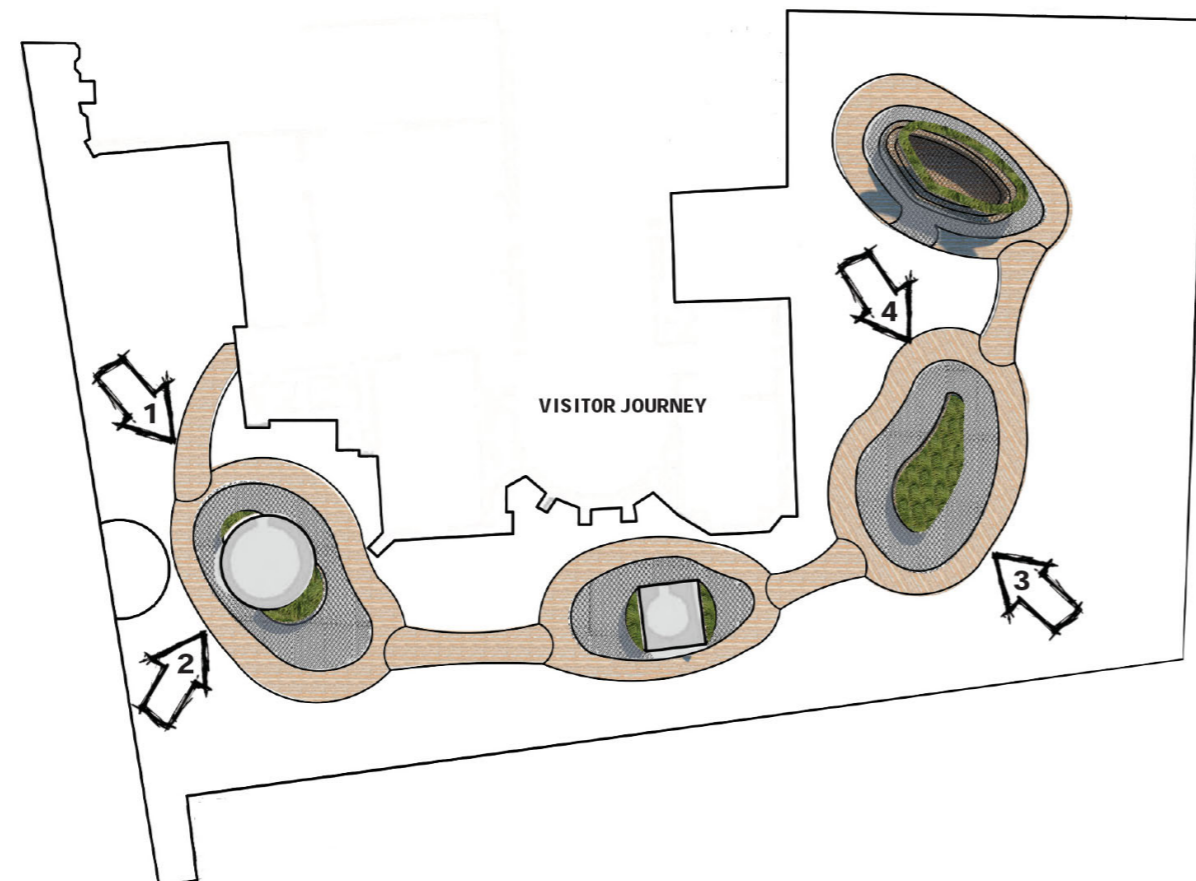
## 03 POWER OF ASSOCIATION

Curved, flowing form with feeling of being lifted off the ground be association evokes free feeling through walking through.



## 04 SPACE FOR DISCOVERY

Hub for discovering new flavours through infused drinks offered at the bar.

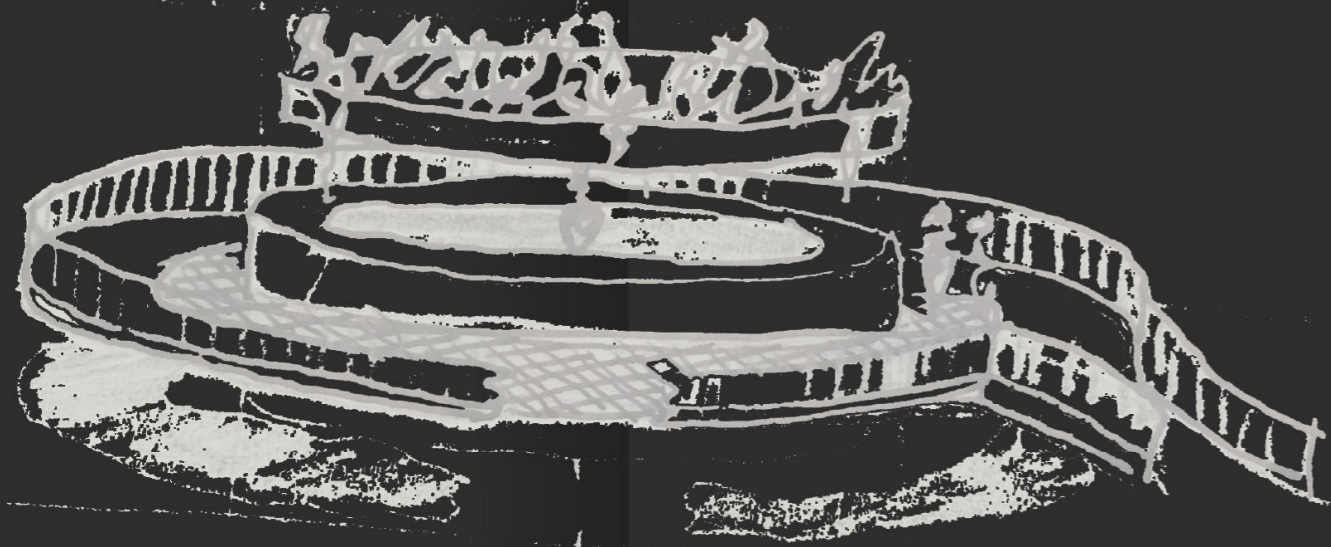


VISUAL 04

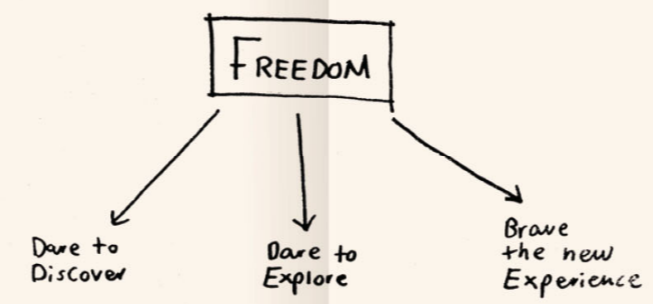


## FREEDOM

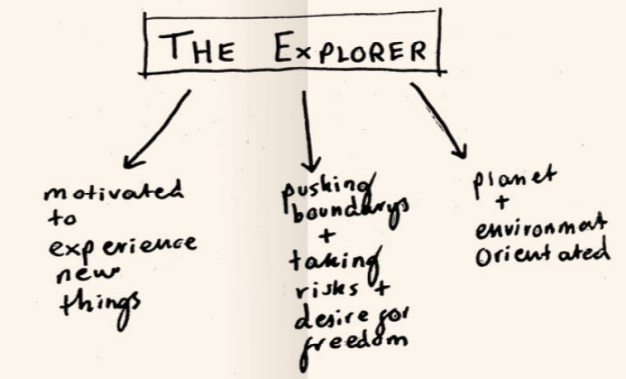
"Things or people that are able to move freely and are not controlled or directed by anything"



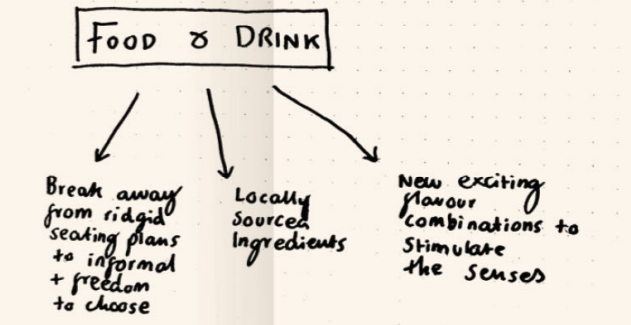
## PURPOSE



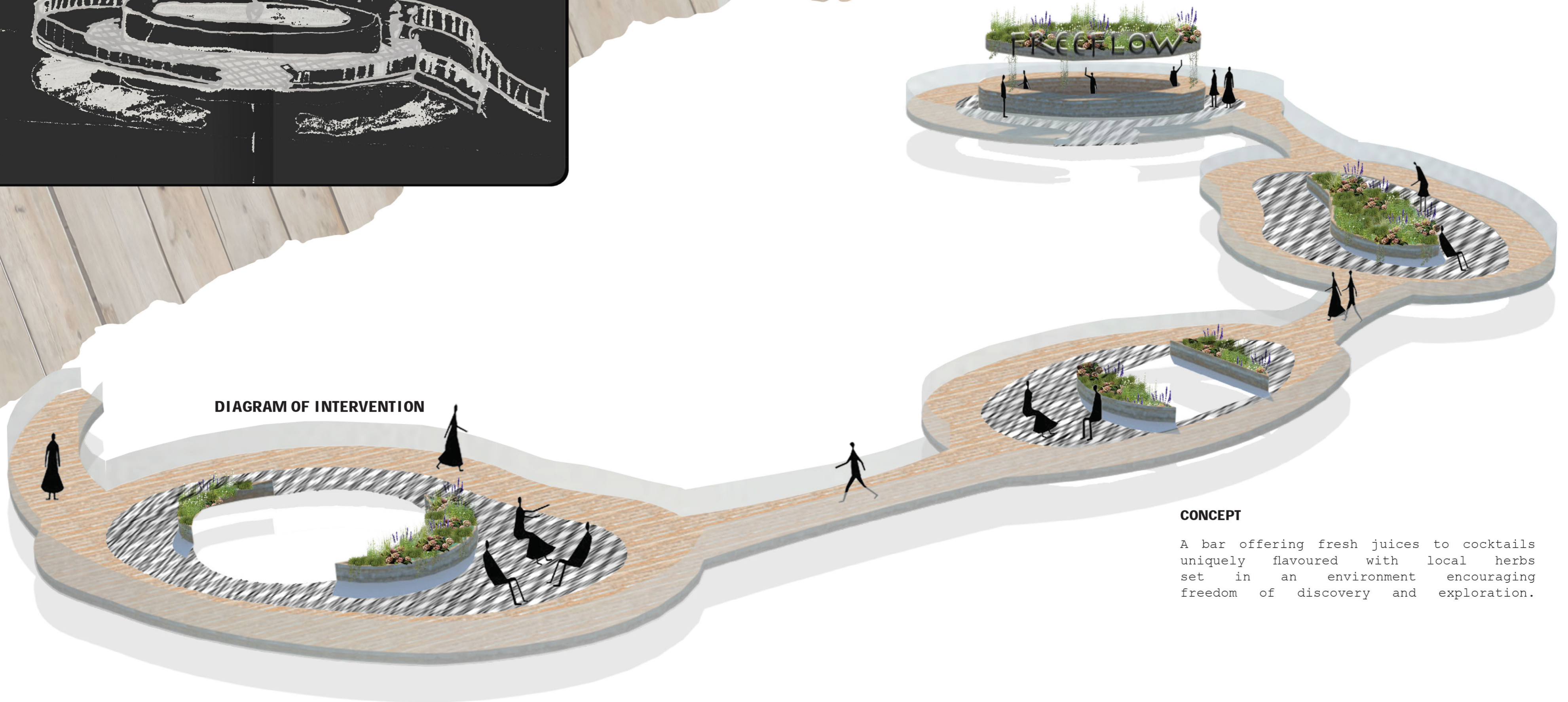
## PEOPLE



## PRODUCT



## DIAGRAM OF INTERVENTION



## CONCEPT

A bar offering fresh juices to cocktails uniquely flavoured with local herbs set in an environment encouraging freedom of discovery and exploration.



## CIRCULATION



Free-flowing structure so people can move freely. In turn free from structure of normal seating to instead sit on the netted flooring giving the feeling of being suspended in the air.

## FORM



Chainlinks symbolise lack of freedom, broken chainlink symbolises being set free - an individual is set free upon reaching the hub of discovery (the bar).

## CRAFT BEER AND FRESH JUICE



Integrated planters offer fresh herbs to be infused into fresh juices, cocktails and craft beers to create natural unique flavour combinations.

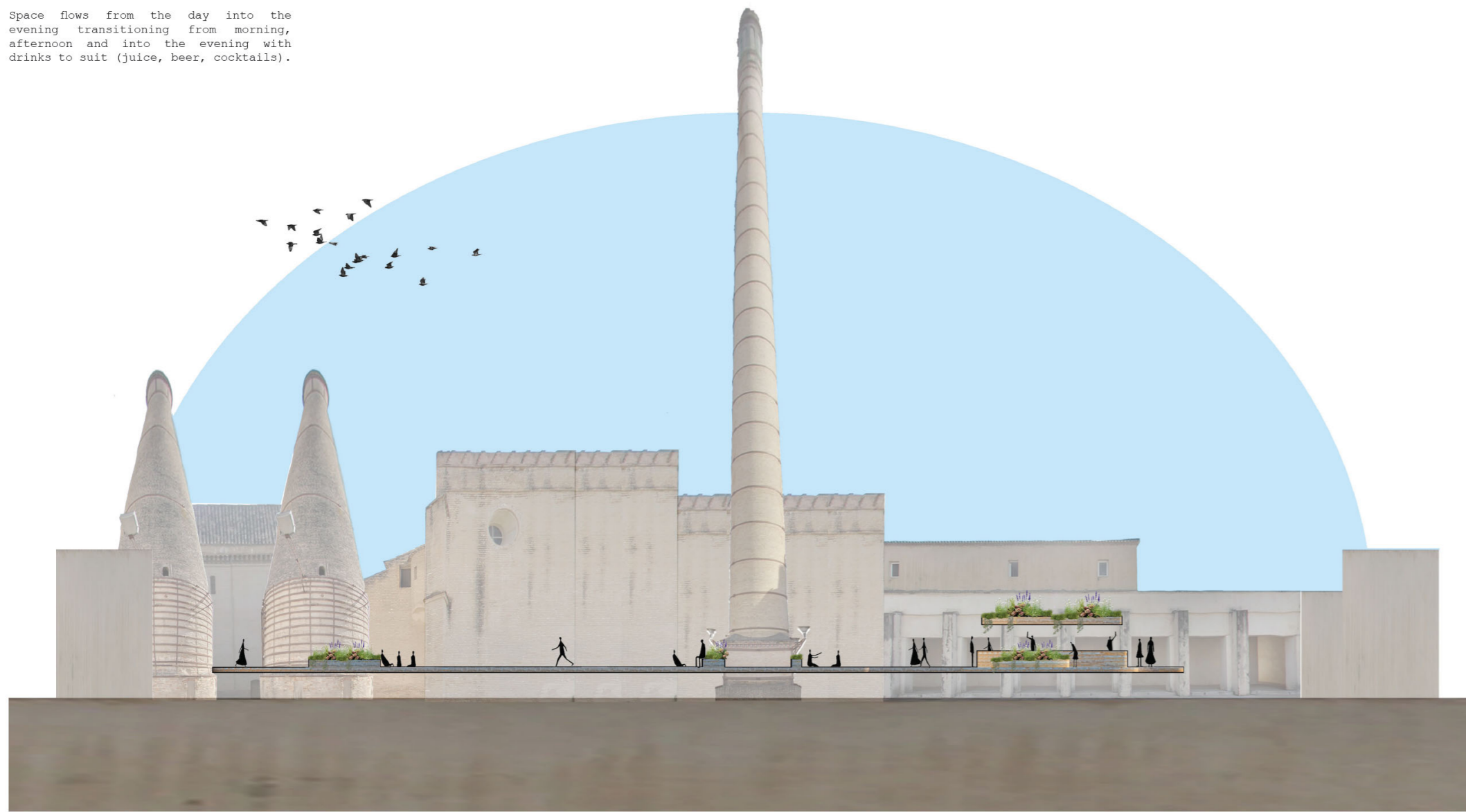


VISUAL 02



**DAY TO NIGHT**

Space flows from the day into the evening transitioning from morning, afternoon and into the evening with drinks to suit (juice, beer, cocktails).

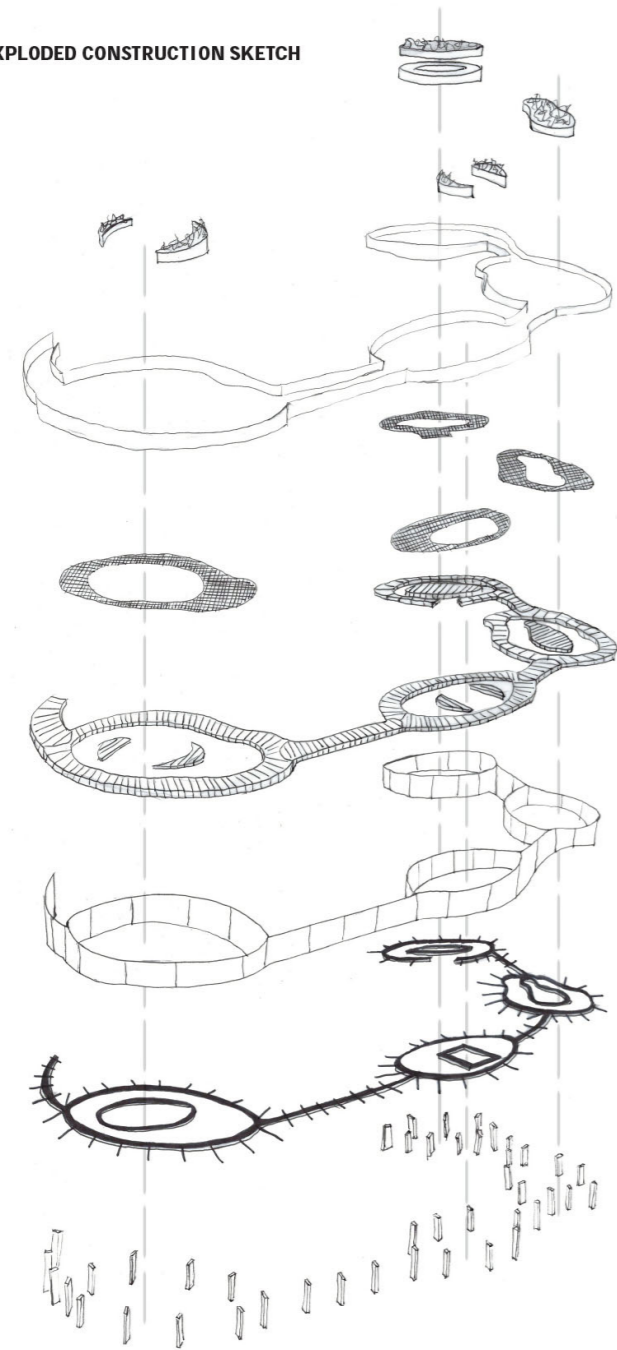


**DAY SECTION A-A' (NTS)**



**NIGHT SECTION A-A' (NTS)**

**EXPLODED CONSTRUCTION SKETCH**



BAR + PLANTERS



FINE MESH RAILING



MESH HAMMOCK SEATING AREA



WOODEN PANELS FLOORING



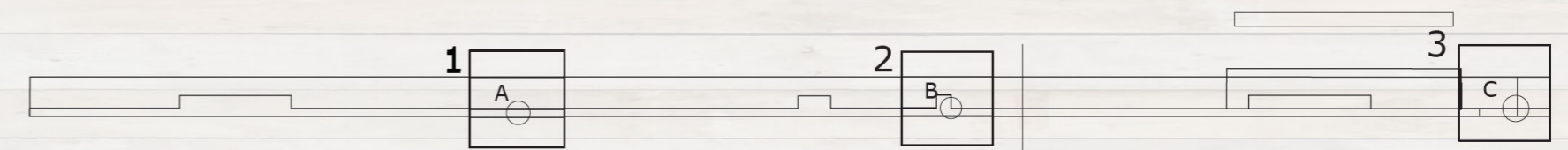
MIRROR PANELS (Appear floating)



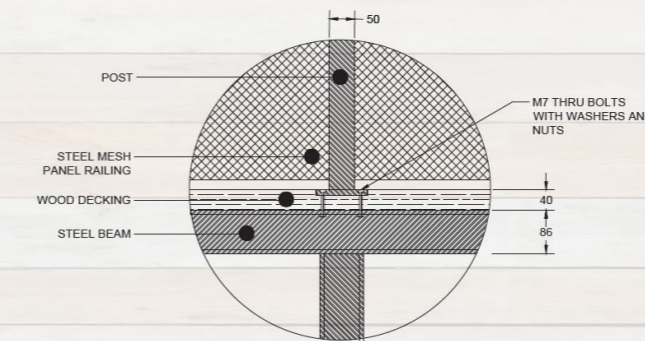
STEEL SUPPORT FRAME



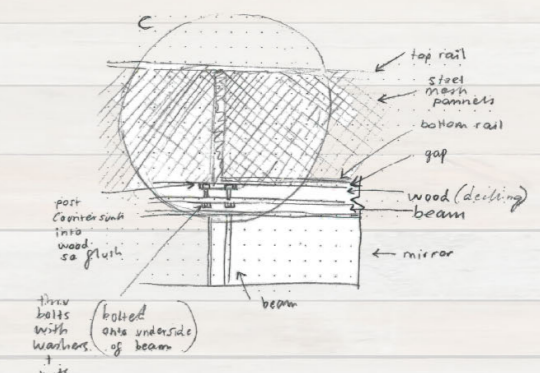
STEEL STRUCTURAL SUPPORT BEAMS



**SECTION A-A' (NTS)**



**DETAIL A (SCALE 1:10)**



**DETAIL SKETCH**





VISUAL 01