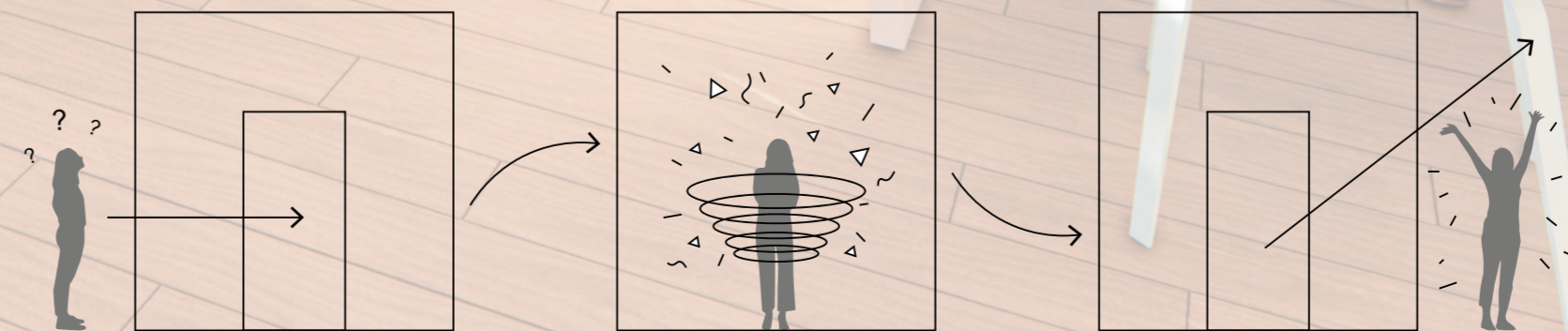




FUTURE MOVES

Future Moves is a unique careers, knowledge and learning hub in the heart of Glasgow's West End. An inclusive, innovative and supportive space, the hub allows young people to learn, develop and be inspired as they make critical early career decisions and prepare to enter the working world.

Seeking to reinvent the outdated, uninspiring and often stressful nature of careers guidance, Future Moves is a new type of careers experience with energy, excitement, passion and personality at its heart. Future Moves is a forward thinking proposal which would allow young people to see what is possible in their future, build valuable relationships with mentors and employers, explore opportunities which they might never have even considered and really visualise their future to empower and excite them as they embark upon their next moves.



Visitors arrive confused and unsure of their next steps.

A process of transformation occurs as visitors discover new possibilities.

Visitors leave feeling inspired and excited about their future moves.

CONCEPT: METAMORPHOSIS

A concept of Metamorphosis, a process of transformation in form from one stage to the next in the life history of an organism, underpins this project. Relating to both the building and users, the concept encapsulates the change and growth facilitated by Future Moves. The users are progressing to the person they will be in the next stage of their lives. At the same time a new and dynamic lease of life is brought to an historic but run-down building.

HOST BUILDING AND ITS FUTURE

Future Moves is located within the former Hillhead Baptist Church, in Glasgow's west end. A striking Neo-Greek style building, the former church has sat neglected and unmaintained for many years and therefore presents the perfect opportunity for regeneration. An important building within the local community, Future Moves proposes a dramatic marriage of old and new and showcases how the future of much loved yet run-down buildings should be regeneration, retaining the history of the building as well as enabling the creation of new stories.



Future Moves is designed to respect and revive the original architecture whilst introducing new, modern extensions to contrast the beauty of the past with the exciting potential of the future. The design incorporates elements of traditional Greek architecture to remain true to the building's original style and updates these elements with creative modern touches.



CAREERS RESEARCH AND JUSTIFICATION

Through personal experience and primary and secondary research, I have identified that making your first career decisions can be difficult and stressful for young people and careers guidance often fails to support them through this confusing time. Future Moves seeks to reimagine typical careers advice to genuinely help the youth population and propose a much need new vision for the future of careers guidance.

In the recent report 'Careers by Design' it stated that 'young people today face an uncertain and disruptive future' (2022:3) and that 'Scotland's career services therefore need to help young people navigate and thrive' (2022:3). Future Moves proposes a radically different, hands on approach to careers guidance that equips young people with the practical skills and knowledge they need to succeed as well as empowering them to embrace the next stage of their lives with confidence and ambition.

I conducted a survey of 42 young people made up of school students and leavers, college/university students, and those in full time employment, aged 15-27 to gain a better understanding of their thoughts and experiences regarding careers guidance. Some key results are shown below.

100% believe there is an opportunity to improve the current nature of careers guidance received during school years.

Over 50% of respondents rated the quality of their careers guidance at school as only satisfactory, poor or very poor.

More than half of participants did not find their careers advisor to be knowledgeable in their field of interest.

84% of participants believe it is difficult for young people to find good quality work experience in their field of interest.

100% believe that if they were able to undertake work experience in their desired career path, it would make future decision making easier.



Louise, 23, Recent Graduate

I am looking to network within my field and connect with both potential employers and other graduates. I am new to the city and so would like to use the centre not just to advance my professional career but also to meet like-minded people and start to build a network of graduates who can support each other.

Cameron, 20, University Student

I am a university student studying physiotherapy. I would really like to find a mentor who could support me as I transition from university into the world of work. Having a contact within my profession who I felt comfortable confiding in and who was external to my employer would be a great support during this time.

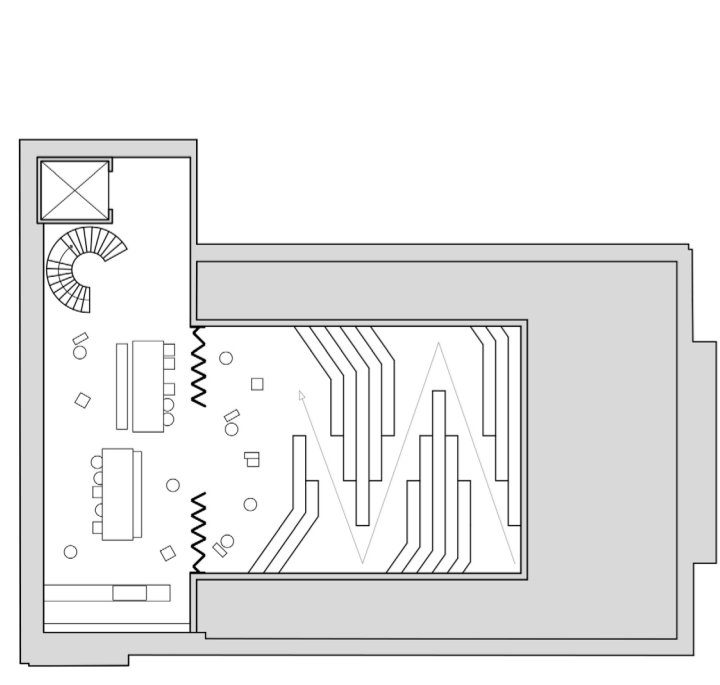
Emma, 15, School Student

I am a school student who is just beginning to embark on my careers' journey. I have no idea what I want to be and so a space where I could come and sample a variety of different careers with workshops and experience days would really help me understand which types of careers I might want to pursue!

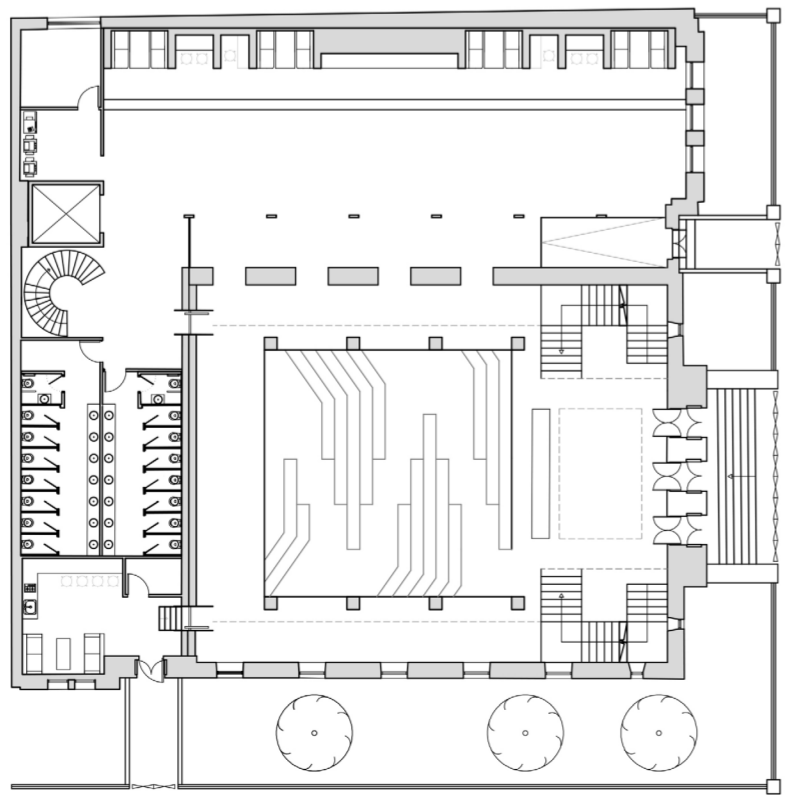
Andrew, 18, School Leaver

I have just left school and want to explore other options besides college and university. I am keen to get straight into the working world and gain some valuable experience. Any advice about internships or apprenticeships would be really helpful and some help on how to create a good CV and budget my finances would also be hugely beneficial.

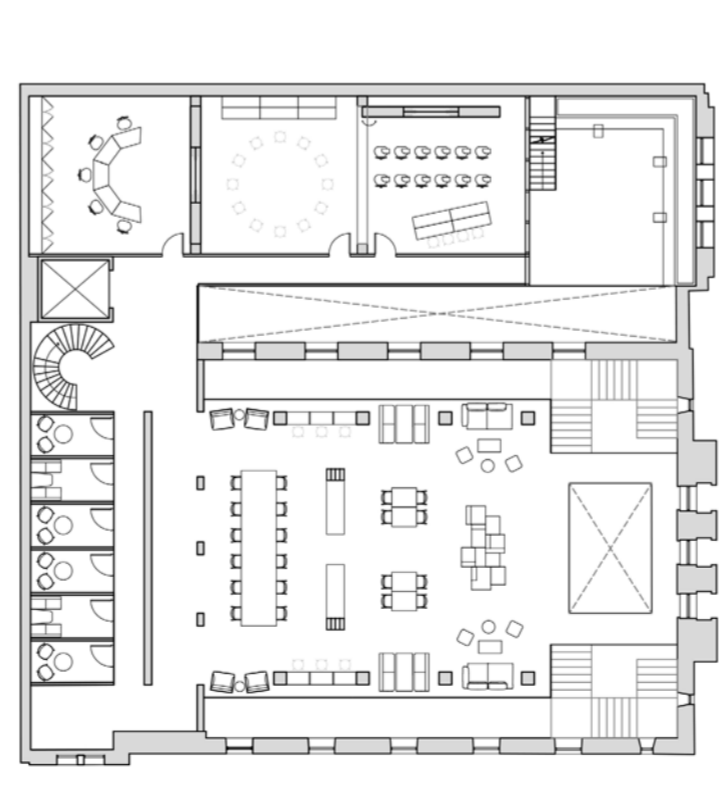
BASEMENT



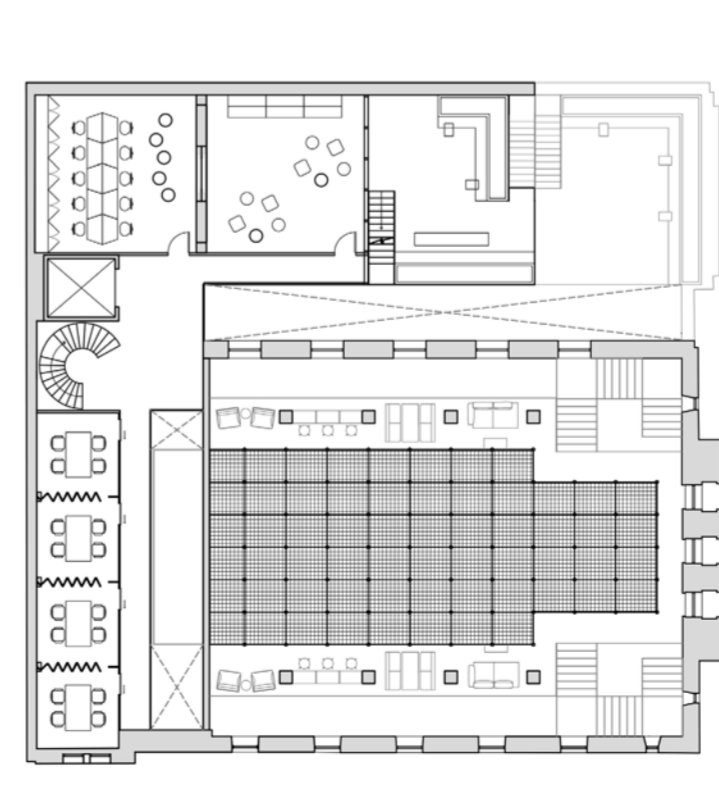
GROUND FLOOR



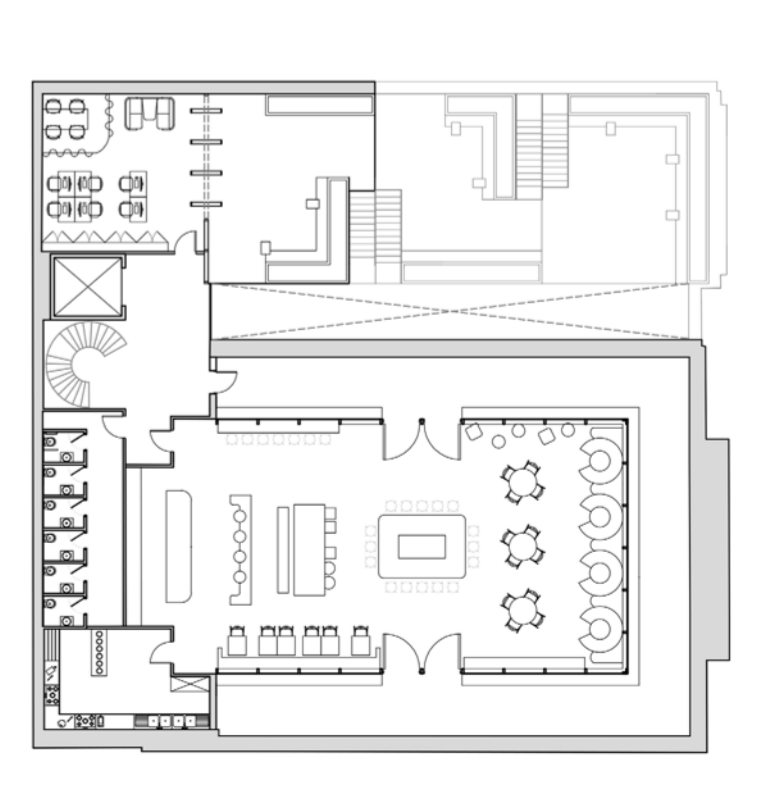
FIRST FLOOR

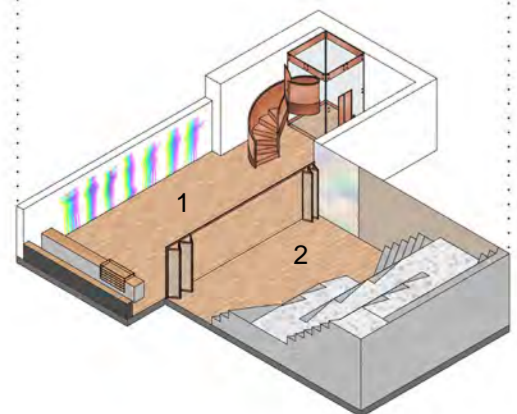
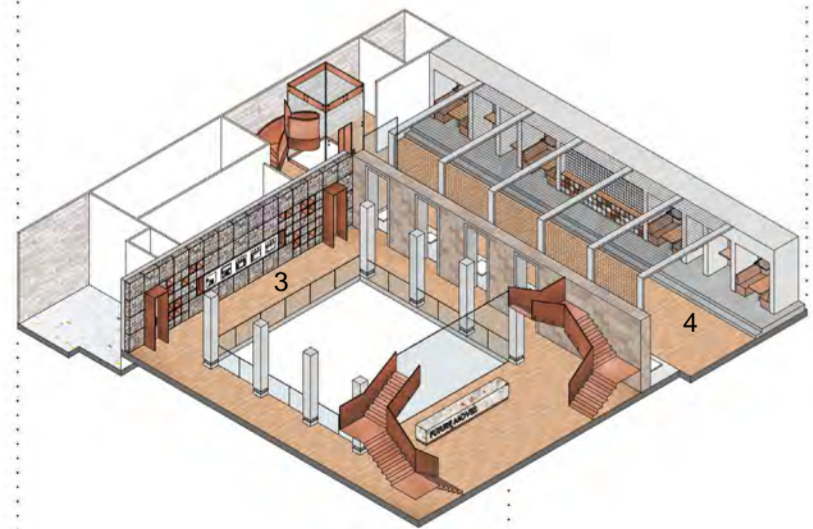
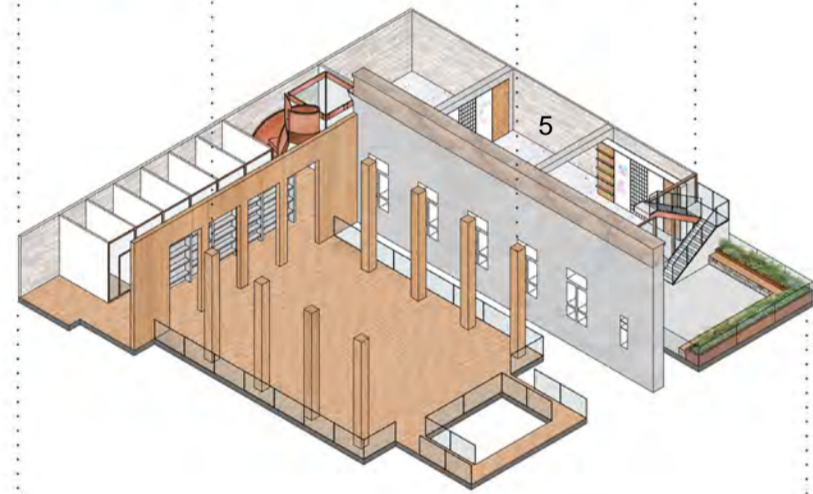
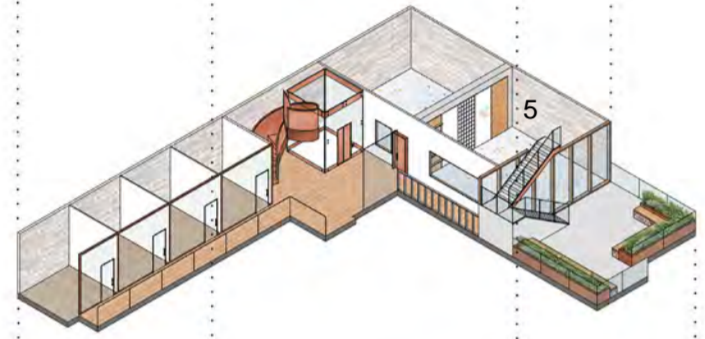
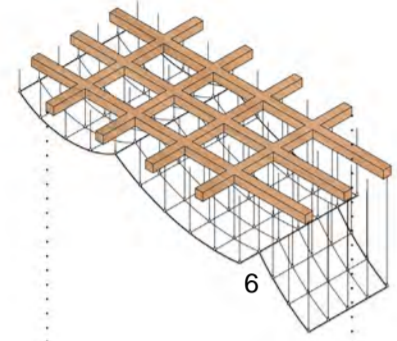
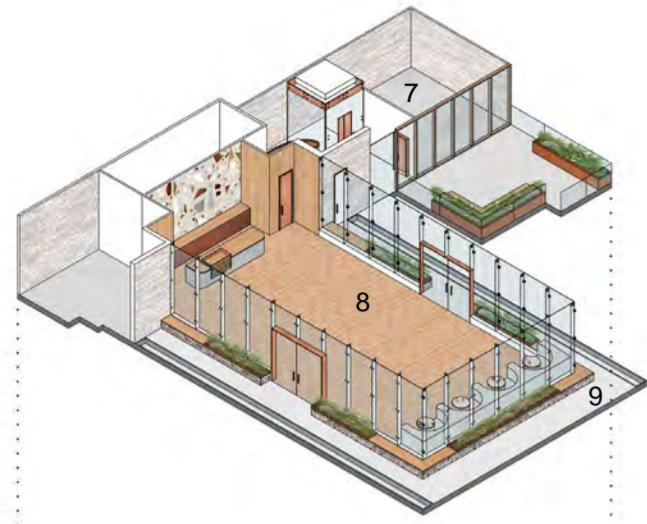


SECOND FLOOR



THIRD FLOOR





7. START-UP OFFICE

The start-up office is a rentable space which offers local business people a place to work and grow their business during its early stages. Young entrepreneurs are able to collaborate and share ideas whilst taking advantage of all the building's facilities.



8. CAFE ACROPOLIS

Having climbed up through the building, visitors are welcomed into Cafe Acropolis, a social destination in the sky, which sits on top of the original church building. A light filled and relaxed space, visitors can reflect upon their experience at Future Moves.



9. ROOFTOP LOOKOUT

The rooftop lookout offers striking panoramic views across the city and allows visitors to imagine their new futures before spreading their wings out into the professional world and embarking upon their next steps.



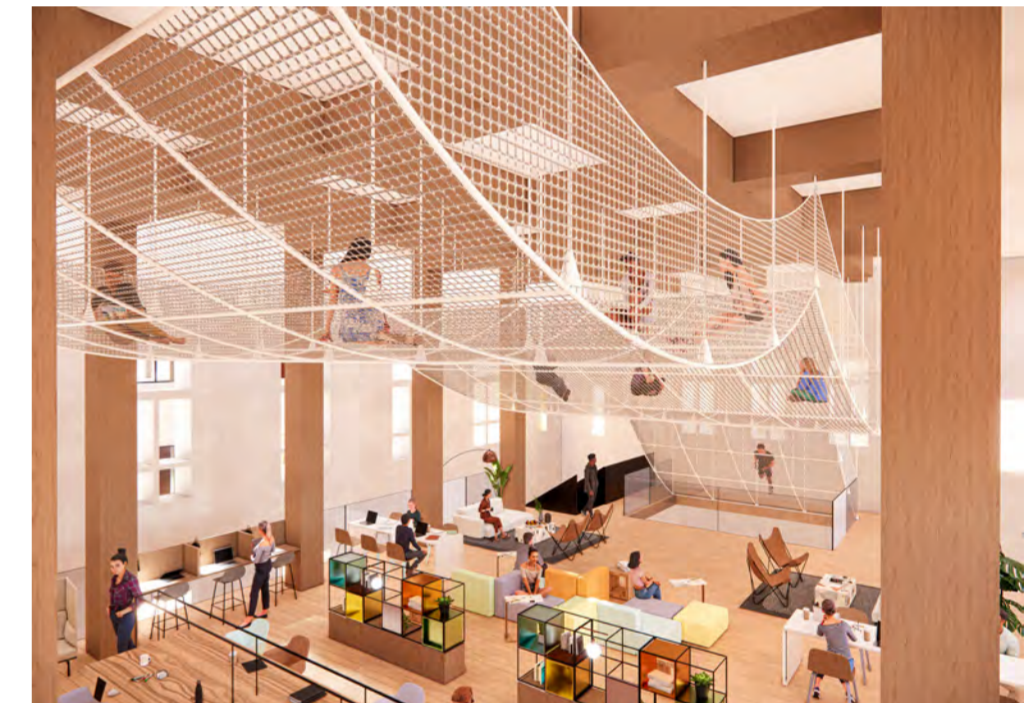
4. THE AGORA

The Agora is a multifunctional work, events and community space capable of hosting activities such as market days, exercise classes and careers fairs. Mesh structures allow for flexibility as furniture is hung within the space and easily changed depending upon the Agora's function.



5. WORK EXPERIENCE STUDIO

Work experience studios allow visitors to trial different careers by facilitating immersive work experience sessions. The transformable spaces are flexibly configured depending upon the desired function, as moveable walls can be repositioned to create bigger or smaller spaces.



6. THE NET

Soaring through the building, The Net puts movement and activity at the heart of the design. A playful breakout space, the Net encourages visitors to be active and move, whilst metaphorically climbing towards their dreams and aspirations for the future.



1. COFFEE SHOP

The coffee shop is an informal social destination, enticing guests as chatter drifts up into the arrival area. An interactive wall encourages playful activity and the space can either spill out onto the tiered seating or be partitioned off during talks.



2. THE THEATRE

A Greek inspired tiered seating structure creates a presentation space in the heart of the scheme. Acoustic partitions can be lowered down during talks to create privacy or the space can be totally open for day to day socialisation.



3. GABION DISPLAY WALL

The gabion display wall is a physical manifestation of the metamorphosis concept, encapsulating transformation by repurposing stone reclaimed from onsite demolition to create a new and inspiring architectural feature showcasing both old and new.

DESIGNATED DINING SPACES

Designated dining spaces foster a healthier eating culture within the building. Visitors do not eat at desks and instead benefit from a walk, fresh air, a change of scenery and socialisation.

INTERIOR STRUCTURES

A playful net structure flies through the space creating a fun and unique breakout space whilst also encouraging movement and activity as visitors climb upwards through the net and partake in light exercise in an enjoyable way.

A HEALTHIER FUTURE FOR GENERATION Z

Sedentary behaviour is one of the most significant health problems faced within modern life and the associated health risks are of serious concern - without change, public health will only continue to decline. Work environments in particular present the opportunity for significant improvement. "For those working in offices, 65-75% of their working hours are spent sitting" (Buckley et al. 2015).

This project recognises the potential to instil healthy behaviours from the outset of prospective careers by fostering healthy habits in Generation Z as the next generation of workers. It seeks to create positive change and improve the lives of users by fostering an active environment which encourages regular movement and activity throughout the day and equips users with healthy behaviours that they can take into the workplace.

In my survey of young people, 100% of respondents agreed that Generation Z could present the opportunity for a healthier workforce and all participants expressed a willingness to adopt new interventions in order to integrate more physical activity into the working day. The results proved that with an open minded and proactive approach, this generation could break the cycle of sedentary related ill health.

OUTDOOR TERRACES

There is no excuse not to get outside, as outdoor terraces provide easy and regular access to nature and fresh air, both of which are beneficial to mental and physical health.



INTERACTIVE ARCHITECTURE

Moveable walls and furniture encourage visitors to actively engage with the building, reconfiguring spaces as desired and exploring options such as standing desks and postural chairs.

MULTIFUNCTIONAL SPACES

Designed as a multifunctional space, The Agora can be transformed from a work space into a gym or exercise space, allowing visitors to work out easily on site.

INTERVENTIONS

Playful interventions encourage visitors to automatically engage in activity and movement inducing activities in fun and playful ways.



PANORAMA TOUR

<https://theviewer.co/share?galleryId=4b-4bf8e6-f499-4655-97e2-f438651d35fc&sceneId=48f1aeb2-2ff7-437c-b3df-02a9b-d54783a&linkType=ShareLink>