

FROZEN IN TIME

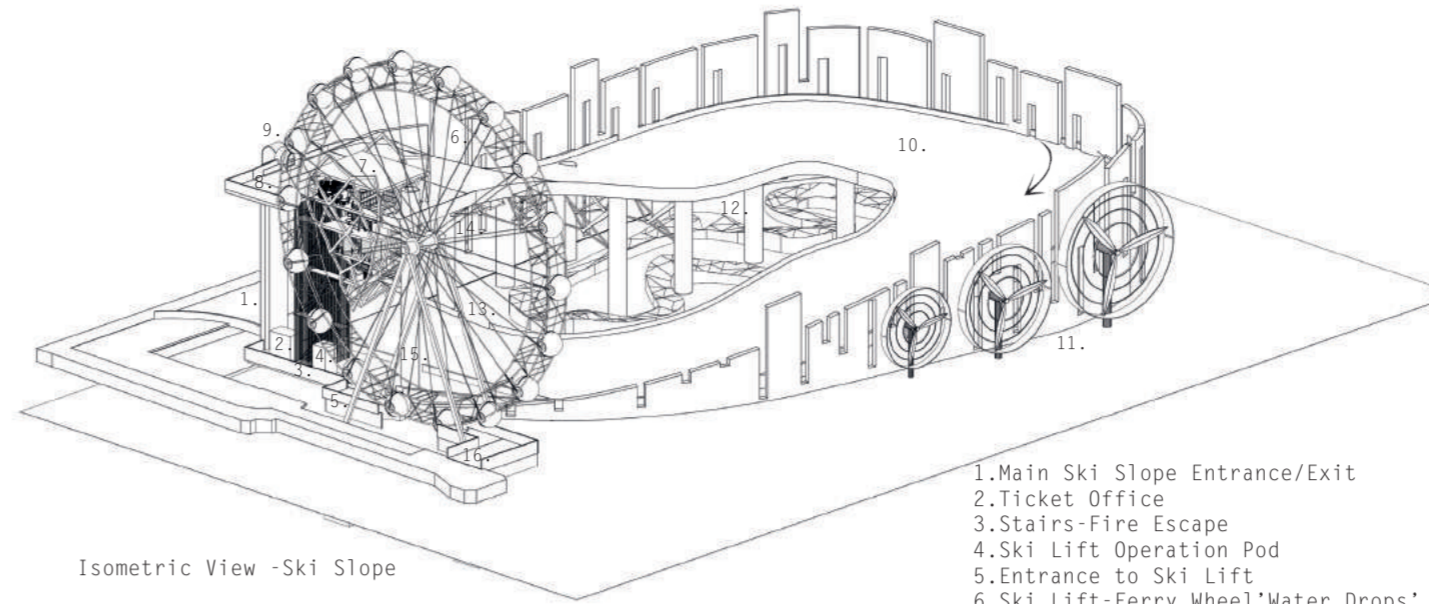
Major Project-Ski Centre

ALICJA DEMKOW

GLOBAL WARMING -MELTING GLACIER-TIME

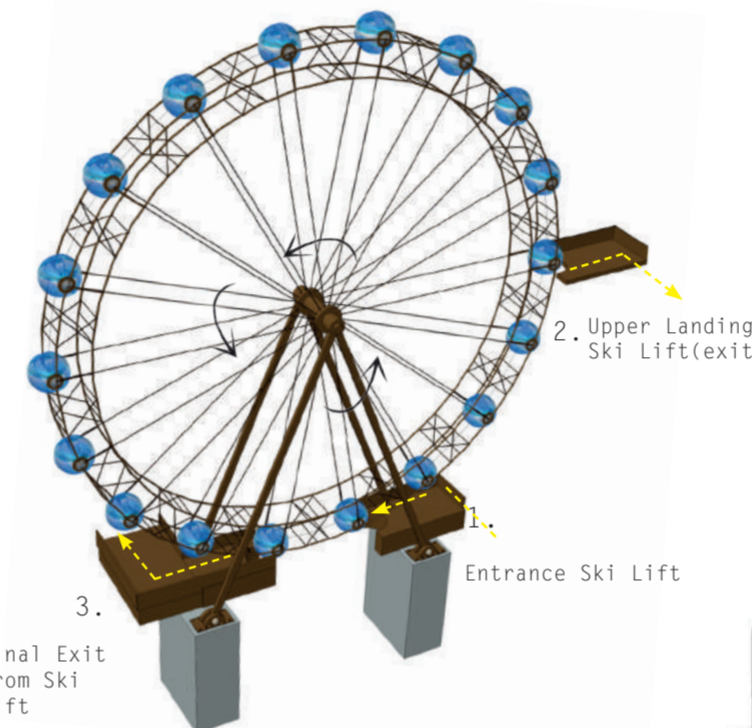
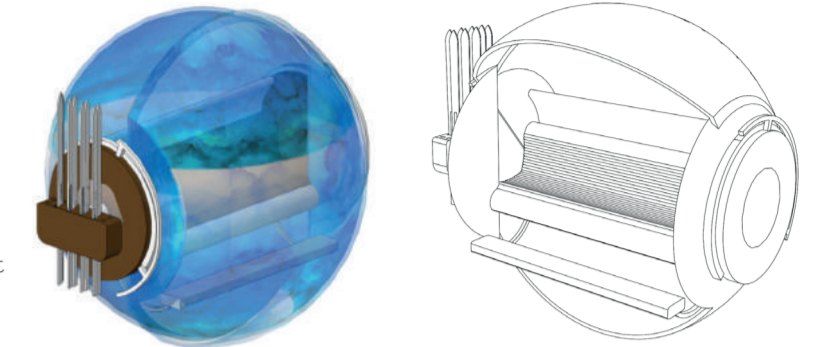


Visualisation 1-Floating Ski Slope



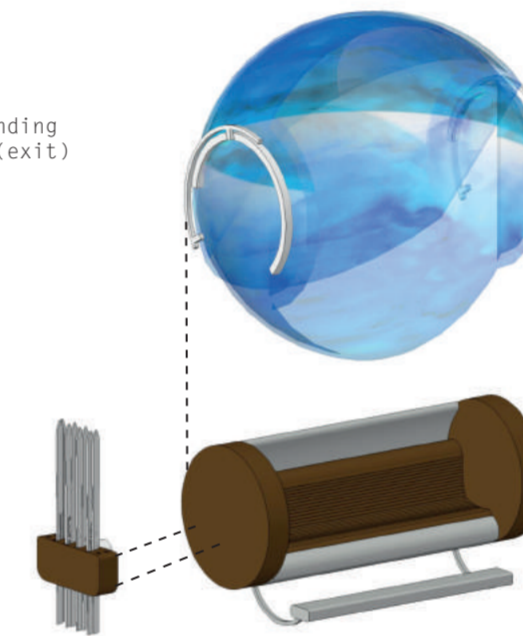
Isometric View -Ski Slope

- 1.Main Ski Slope Entrance/Exit
- 2.Ticket Office
- 3.Stairs-Fire Escape
- 4.Ski Lift Operation Pod
- 5.Entrance to Ski Lift
- 6.Ski Lift-Ferry Wheel'Water Drops'
- 7.Ski Building-Cafe, Relaxation Space,Toilets,Viewpoint
- 8.Upper Landing-Ski Lift(exit)
- 9.Upper Stairs Exit
- 10.Dry Ski Slope
- 11.Wind Turbines
- 12.Pump Track
- 13.Entrance-Pump Truck
- 14.Rope Park & Zip Line
- 15.Lift
- 16.Exit from Ski lift

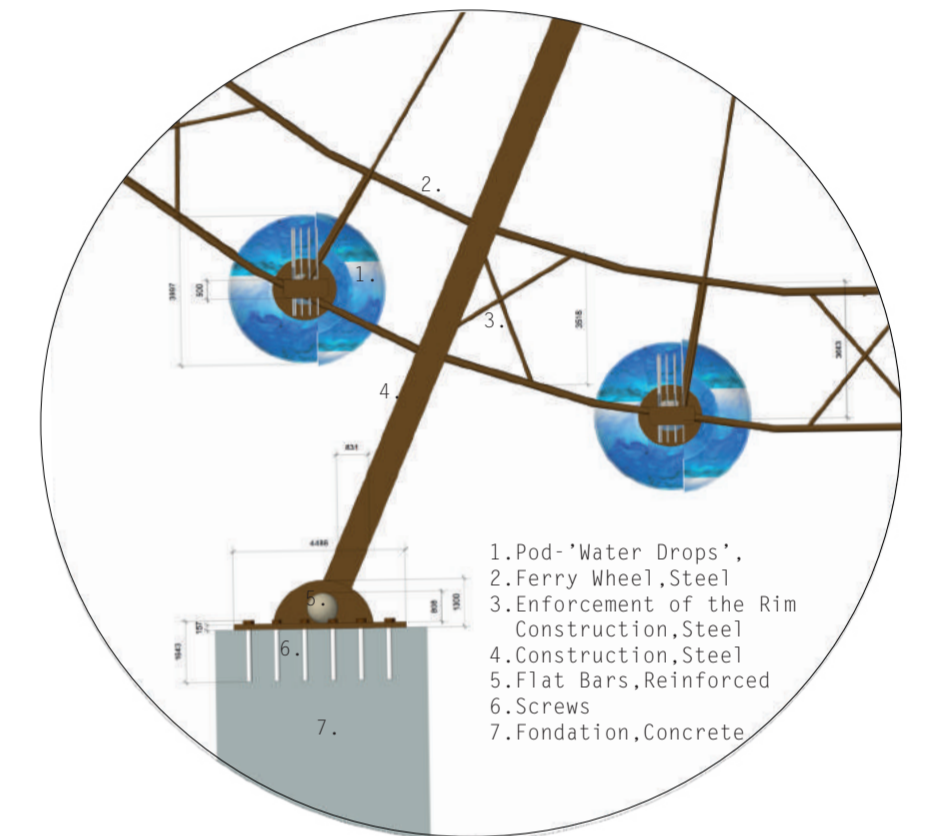


Final Exit from Ski Lift

Directional Flow-Ferris Wheel

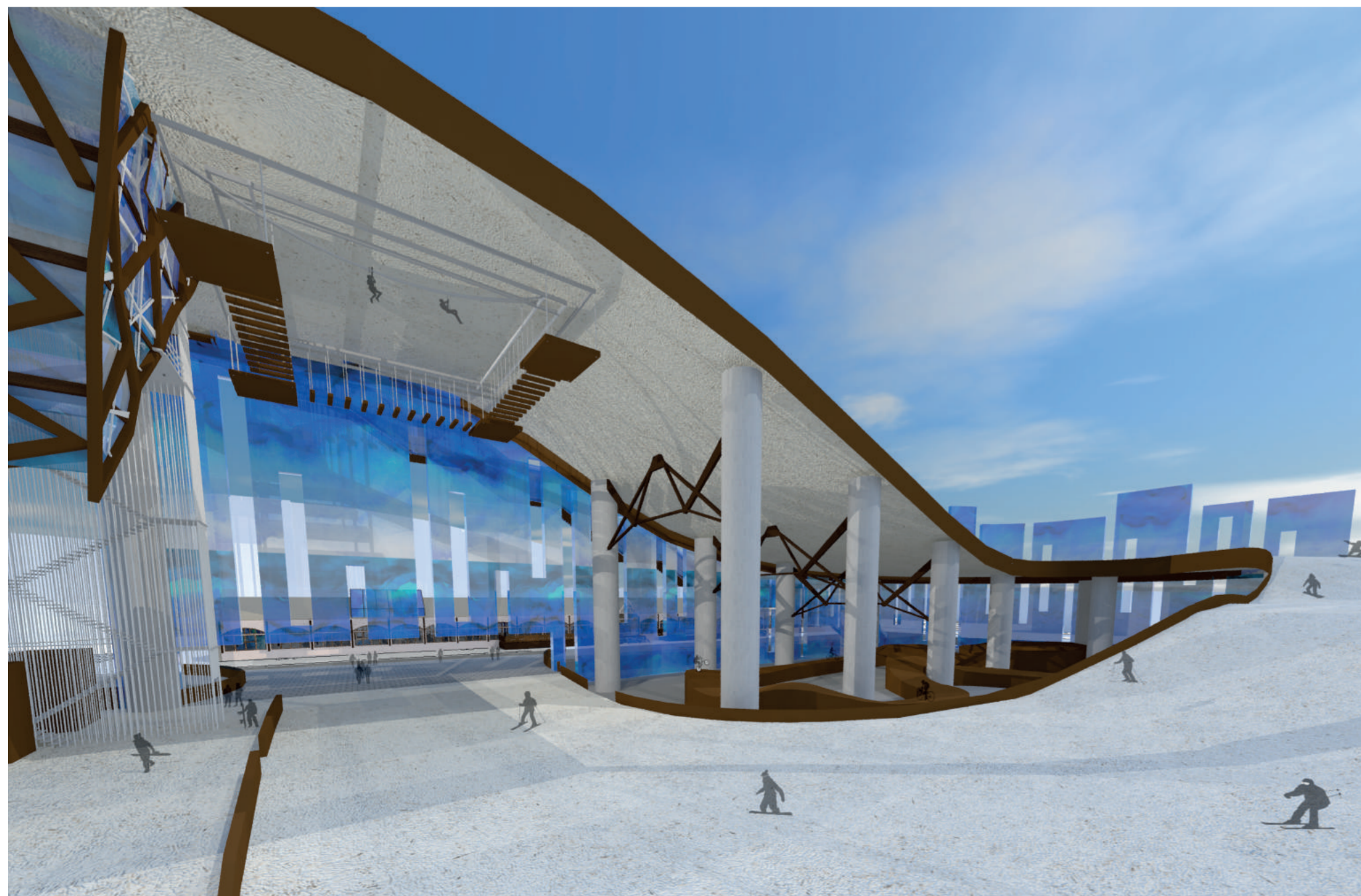


Parts of Ski Slope Pod



Detail Drawing (1:200)-Ferris Wheel

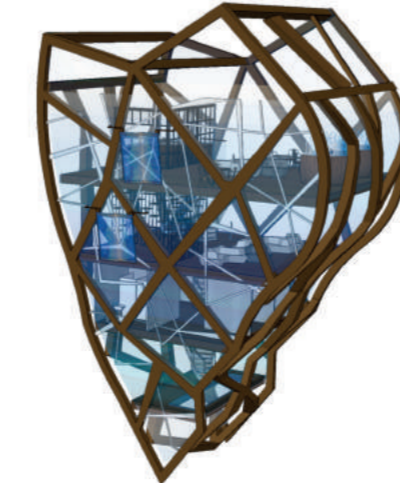
- 1.Pod-'Water Drops'
- 2.Ferry Wheel,Steel
- 3.Enforcement of the Rim Construction,Steel
- 4.Construction,Steel
- 5.Flat Bars,Reinforced
- 6.Screws
- 7.Foundation,Concrete



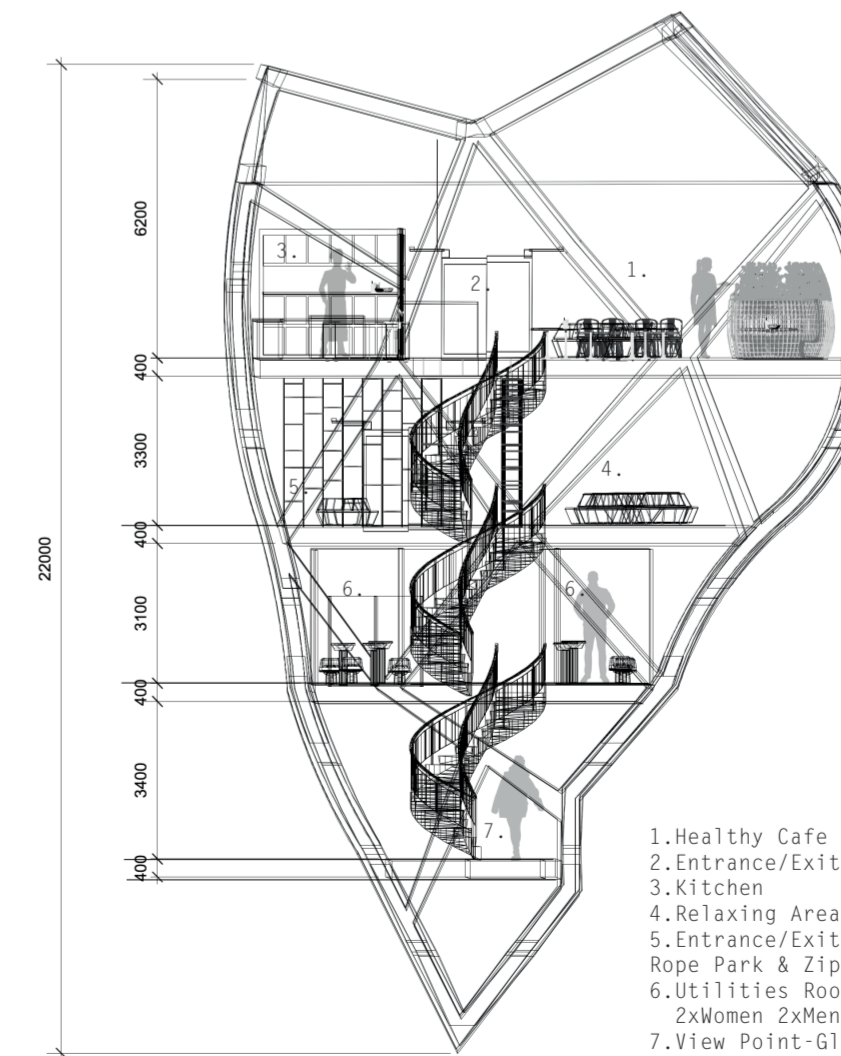
Visualisation 2 -Area Beneath Ski Slope



Inspiration-Melting Glacier
<https://www.pinterest.co.uk/pin/71452429143273134/>

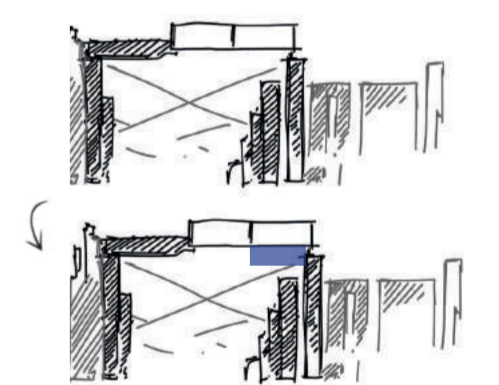


Ski Slope Building-Front

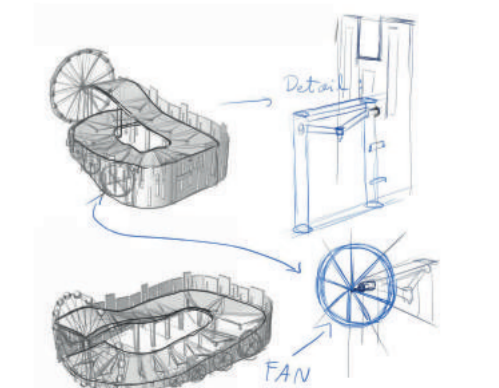


Long Section (1:100)- Ski Slope Building

- 1.Healthy Cafe
- 2.Entrance/Exit Building
- 3.Kitchen
- 4.Relaxing Area
- 5.Entrance/Exit to Rope Park & Zip Line
- 6.Utilities Room
2xWomen 2xMen 1xDisable
- 7.View Point-Glass Chasm
- 9.Upper Stairs Exit



Ski Slope Building-Transformation



Ski Slope Foundations-Interview Sketches



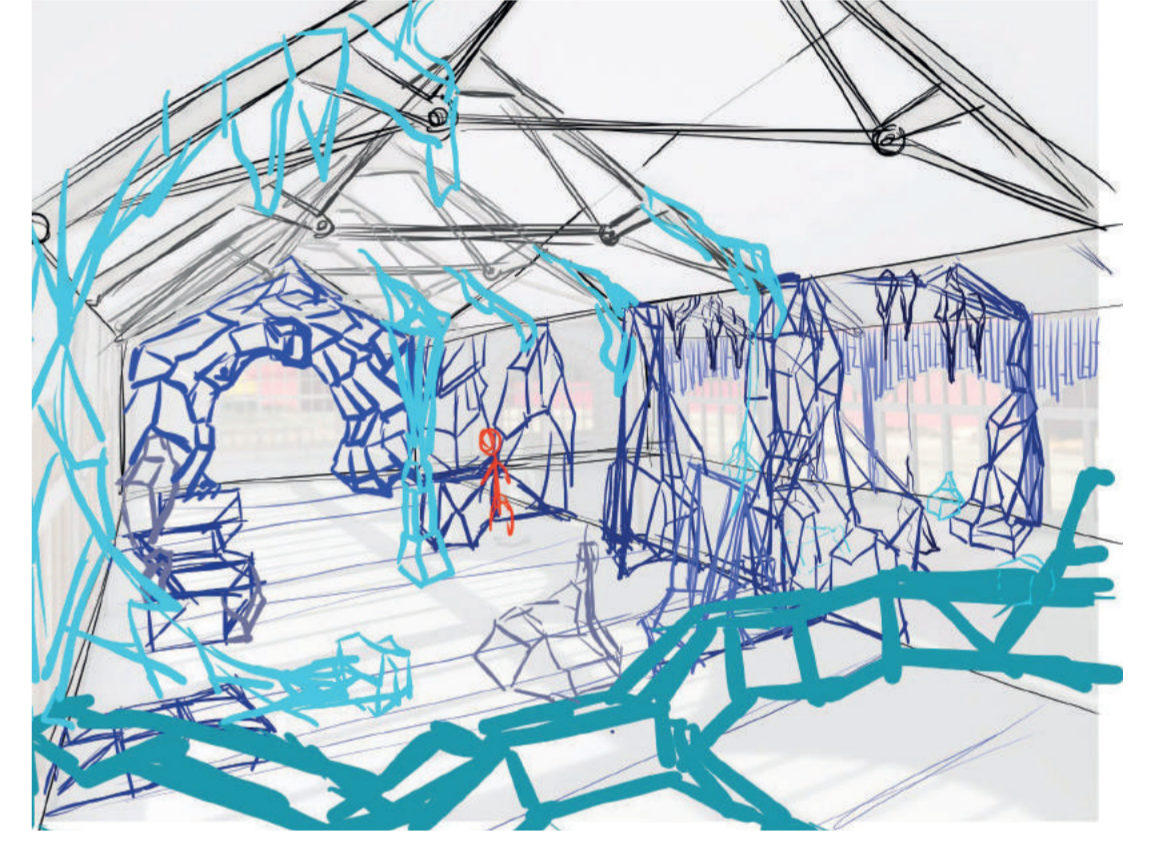
Visualisation 3- Reception, Ski Rental



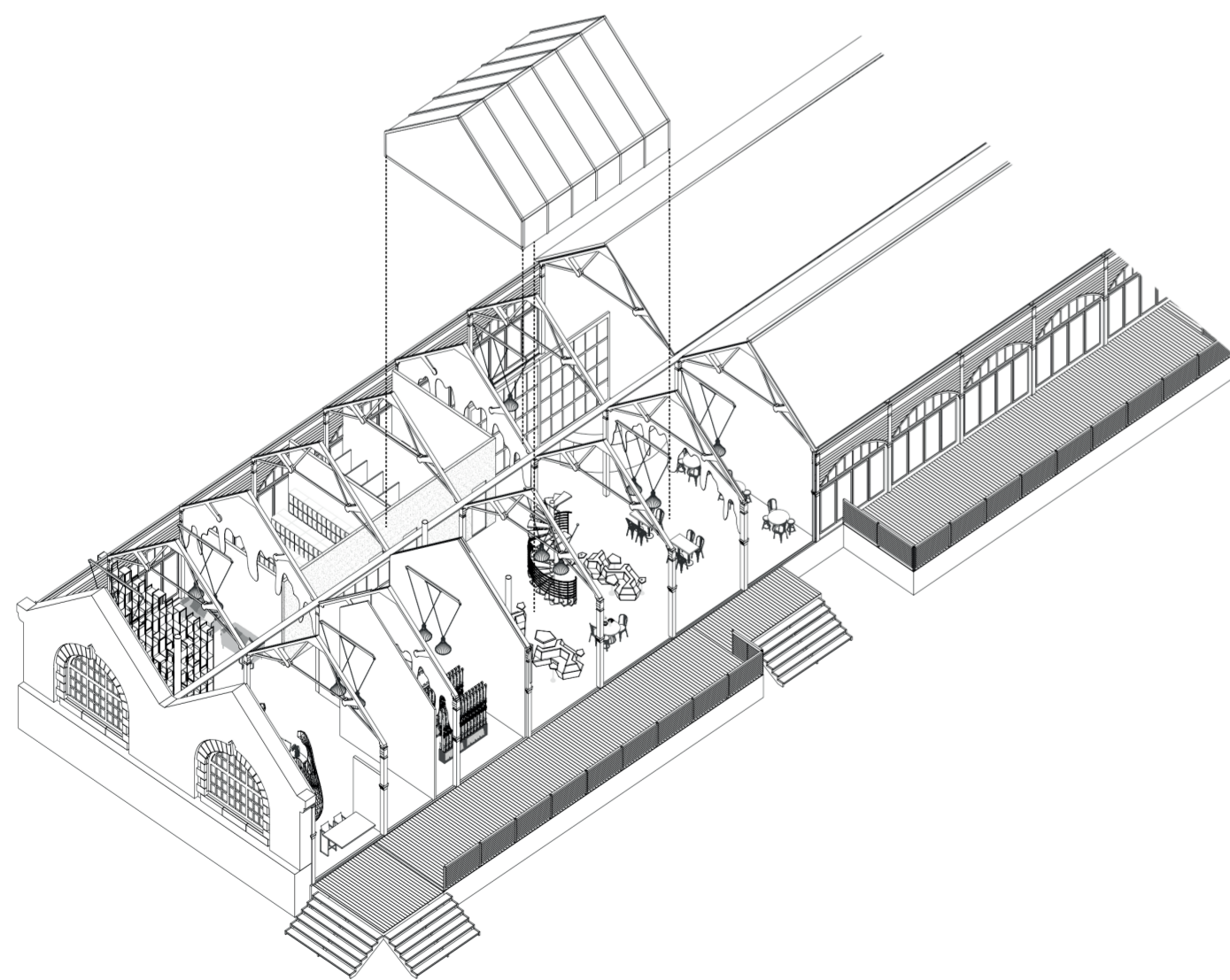
Ski Centre-Lighting Study



Isomalt Models-Melting Ice



Sketch- Ice Cave

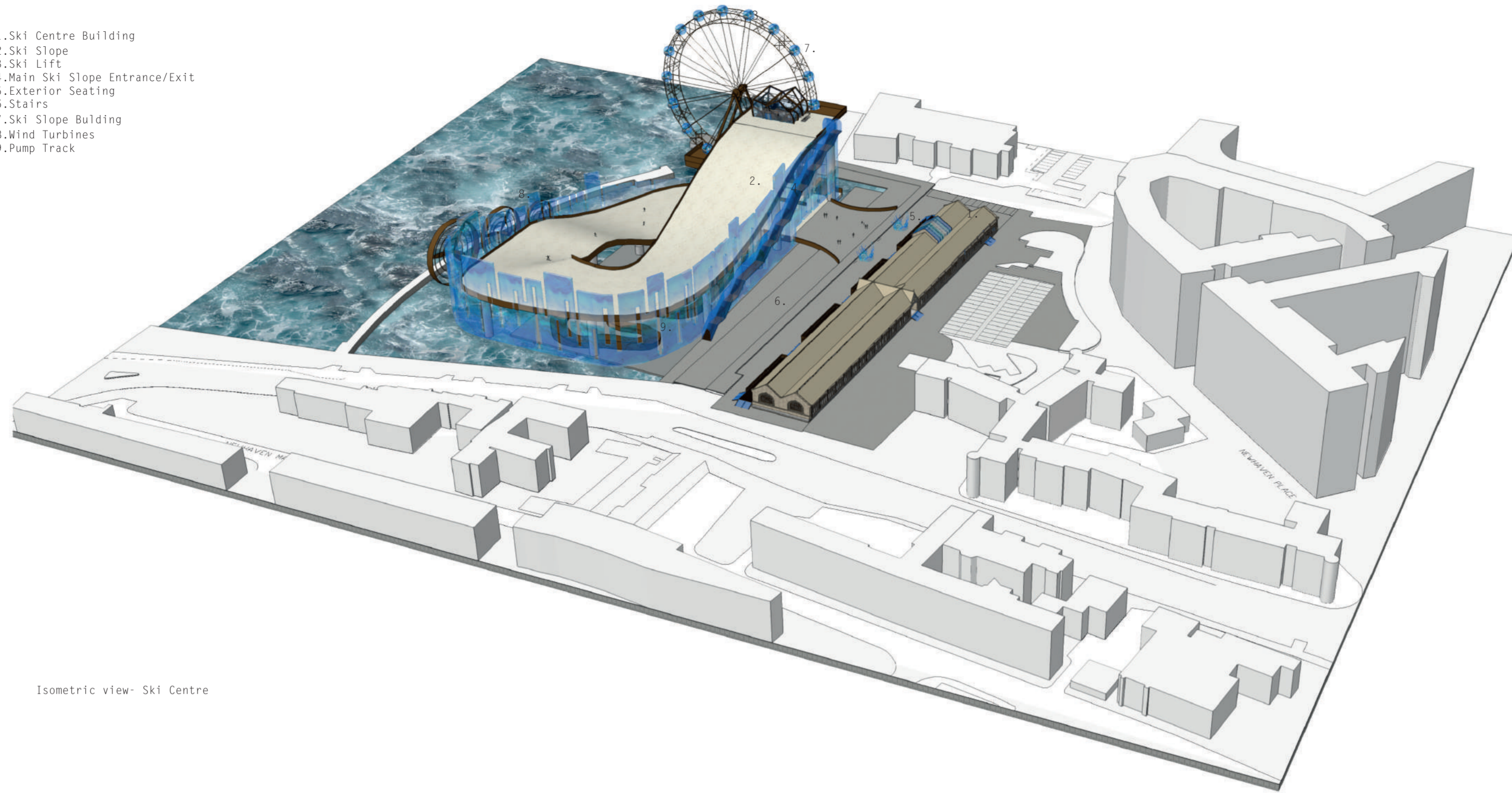


Isometric View-Ski Centre

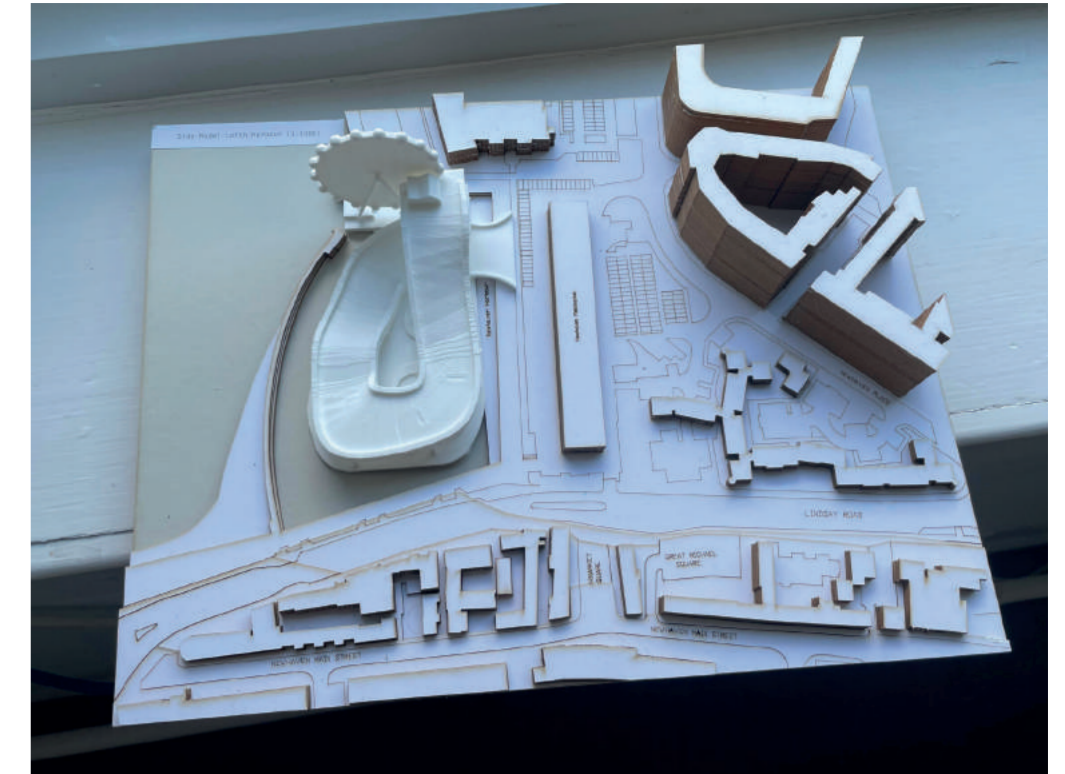


Long Section (1:100)-Ski Centre

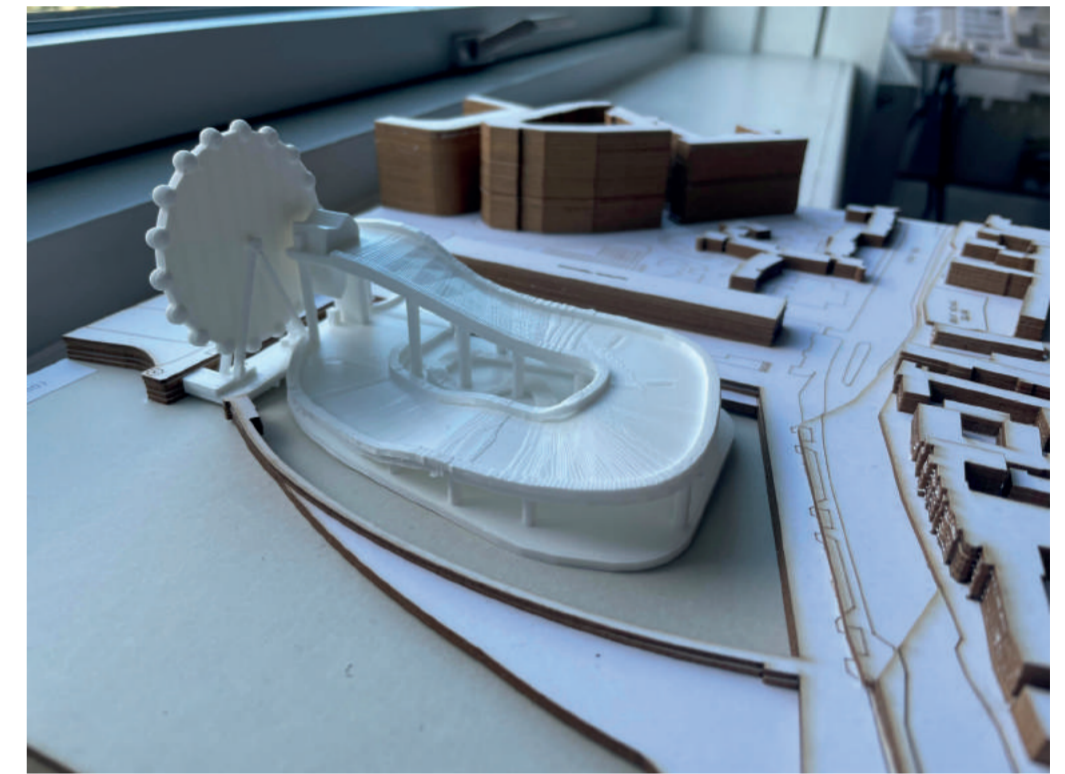
- 1.Ski Centre Building
- 2.Ski Slope
- 3.Ski Lift
- 4.Main Ski Slope Entrance/Exit
- 5.Exterior Seating
- 6.Stairs
- 7.Ski Slope Bulding
- 8.Wind Turbines
- 9.Pump Track



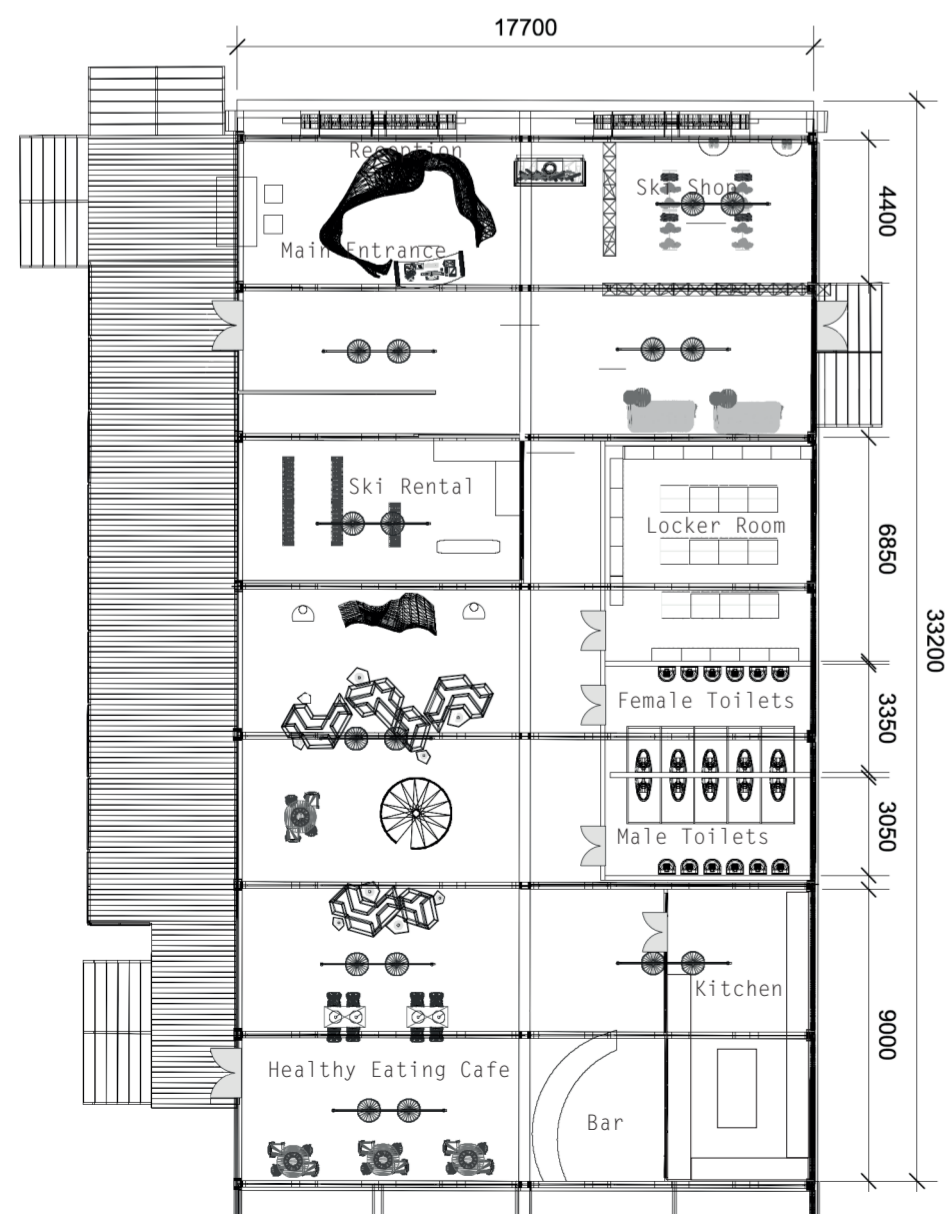
Isometric view- Ski Centre



Side Model-Fishmarket (1:1000)



3D Printed Ski Slope Model (1:1000)

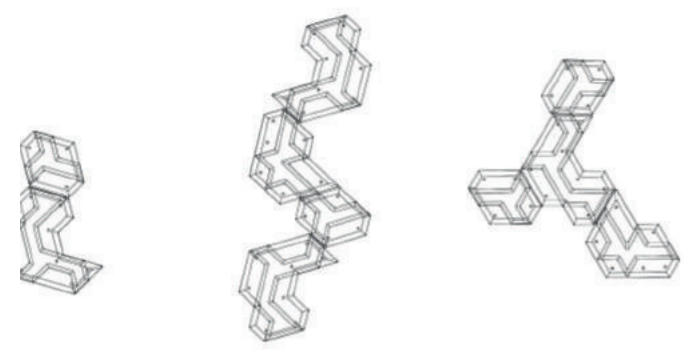


Floor Plan (1:200)-Ski Centre



Final Model-Ski Centre (1:50)

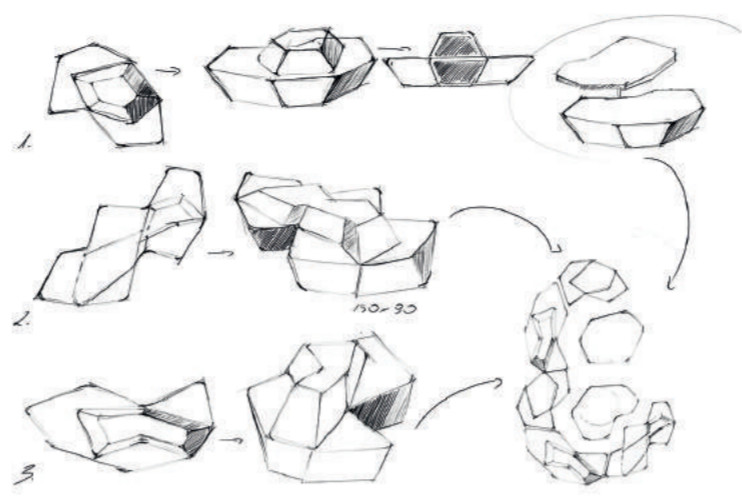




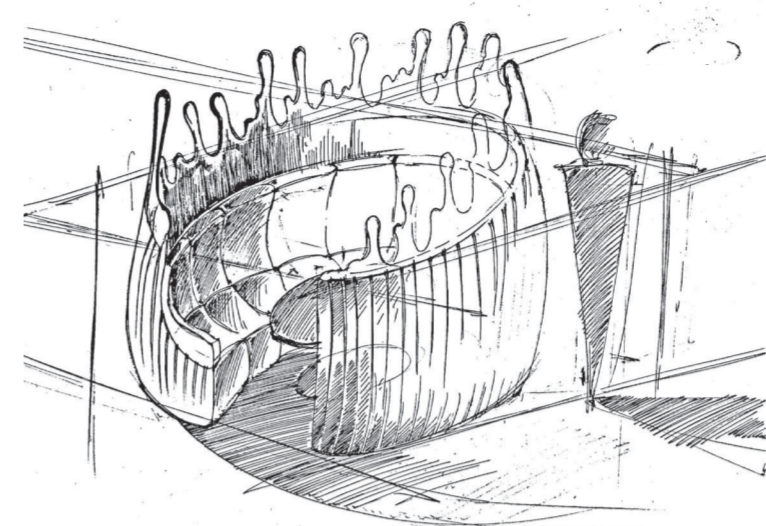
Modular Seating System-Various Placements



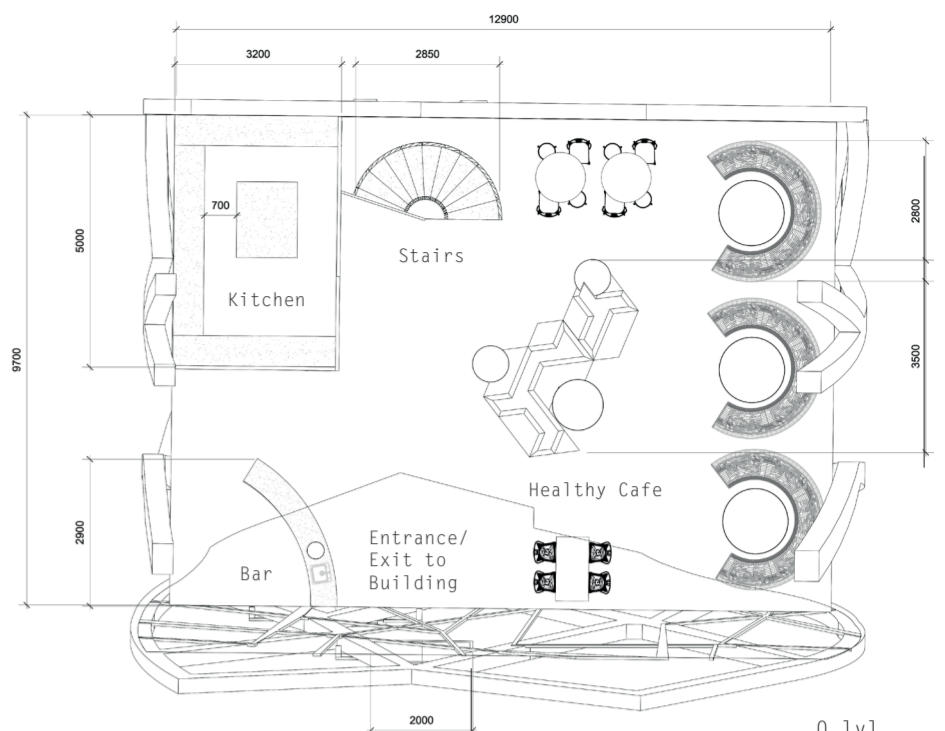
Isometric View-Sofas- Pieces of Ice



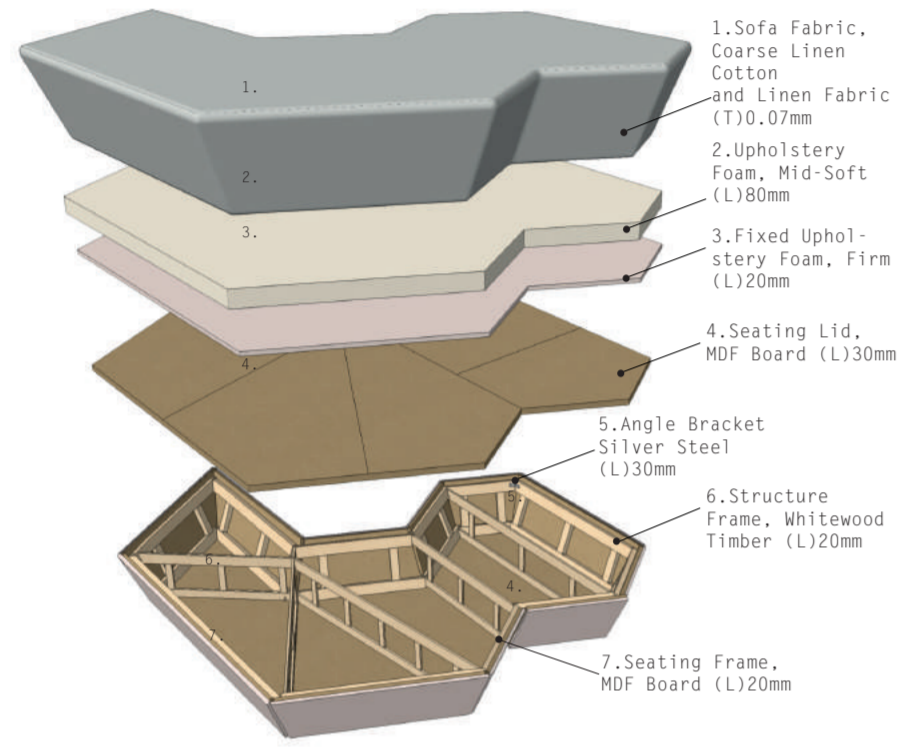
Development Sketches- Modular Seating



Sketch of the Sofa- Inspiration 'Global Warming'

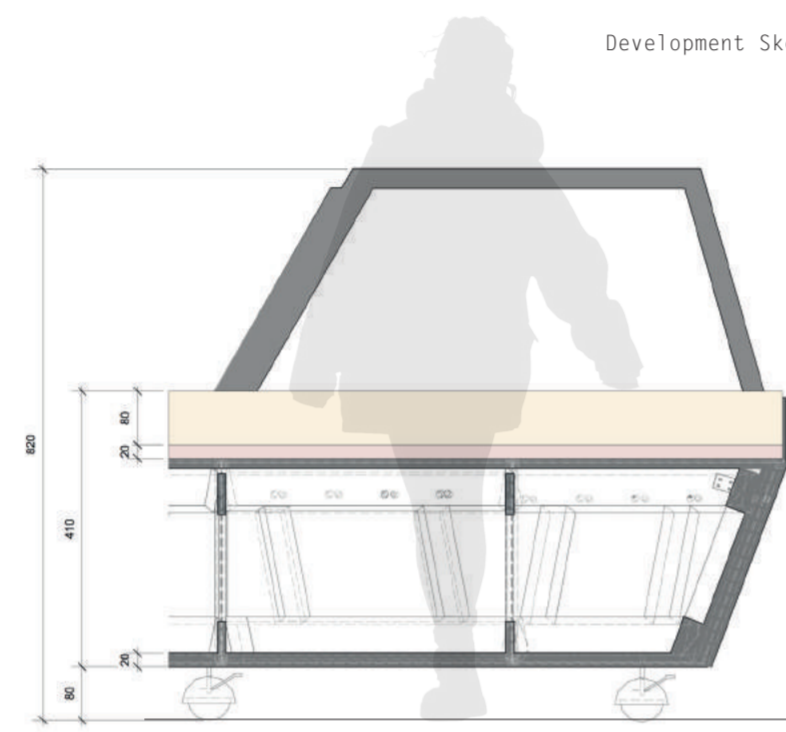


0 lvl.

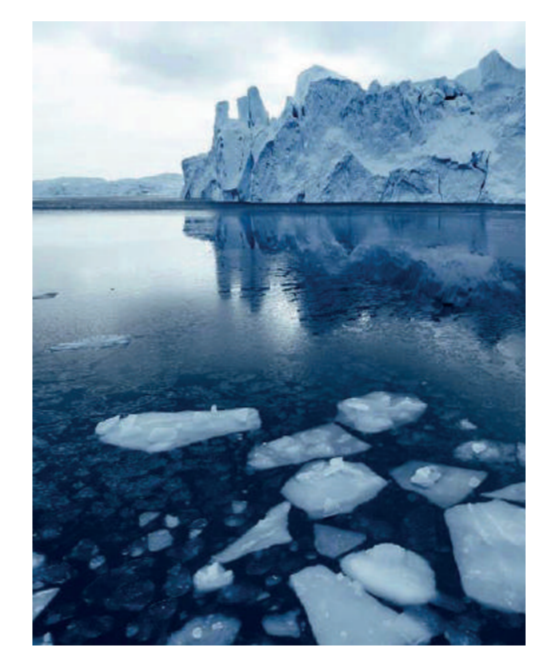


Modular Seating-Detail

- 1. Sofa Fabric, Coarse Linen Cotton and Linen Fabric (T)0.07mm
- 2. Upholstery Foam, Mid-Soft (L)80mm
- 3. Fixed Upholstery Foam, Firm (L)20mm
- 4. Seating Lid, MDF Board (L)30mm
- 5. Angle Bracket Silver Steel (L)30mm
- 6. Structure Frame, Whitewood Timber (L)20mm
- 7. Seating Frame, MDF Board (L)20mm



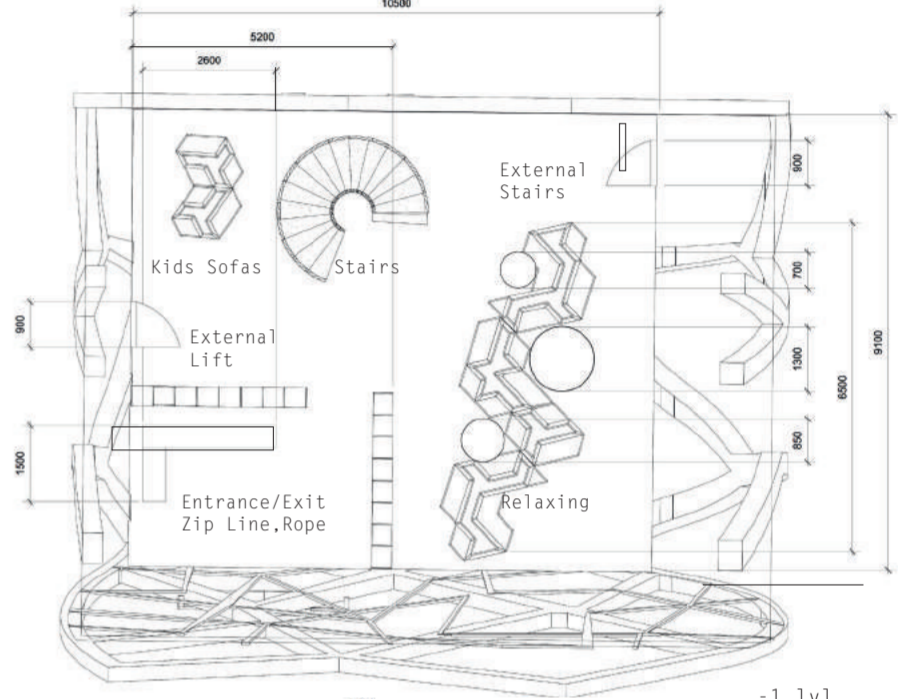
Part of the Long Section (1:10)



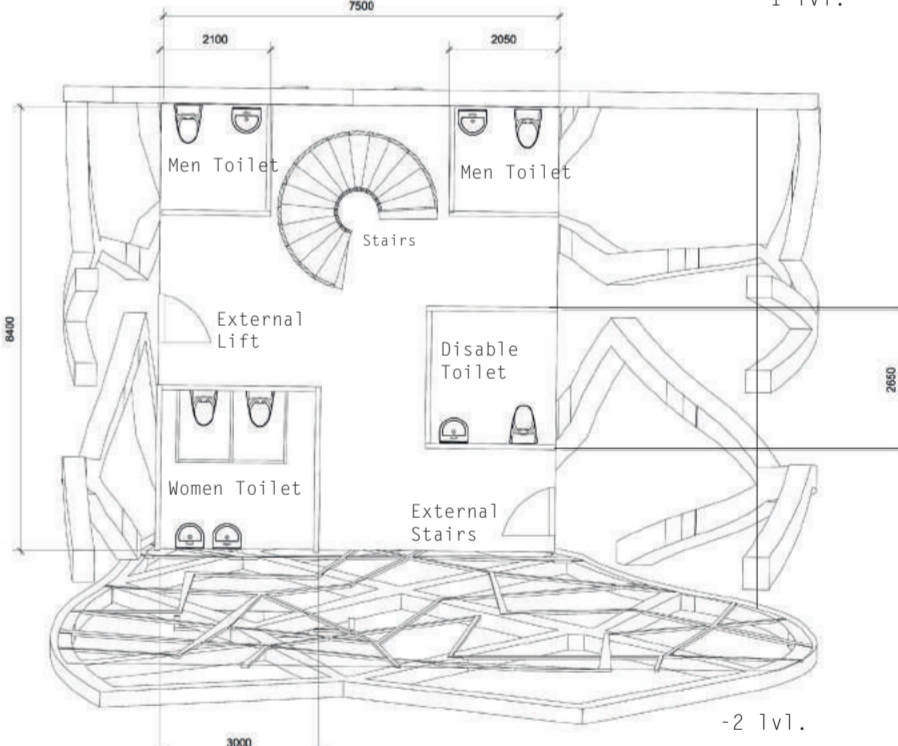
Inspiration-Melting Glacier
<https://www.pinterest.co.uk/pin/175499716719425656/>



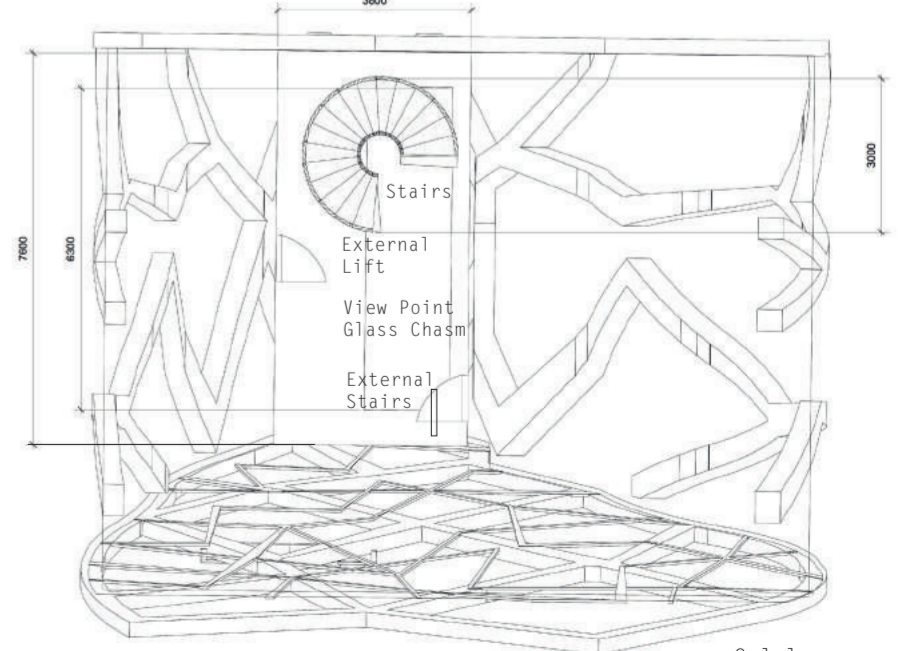
Cad Model Sofa- Melting Glacier



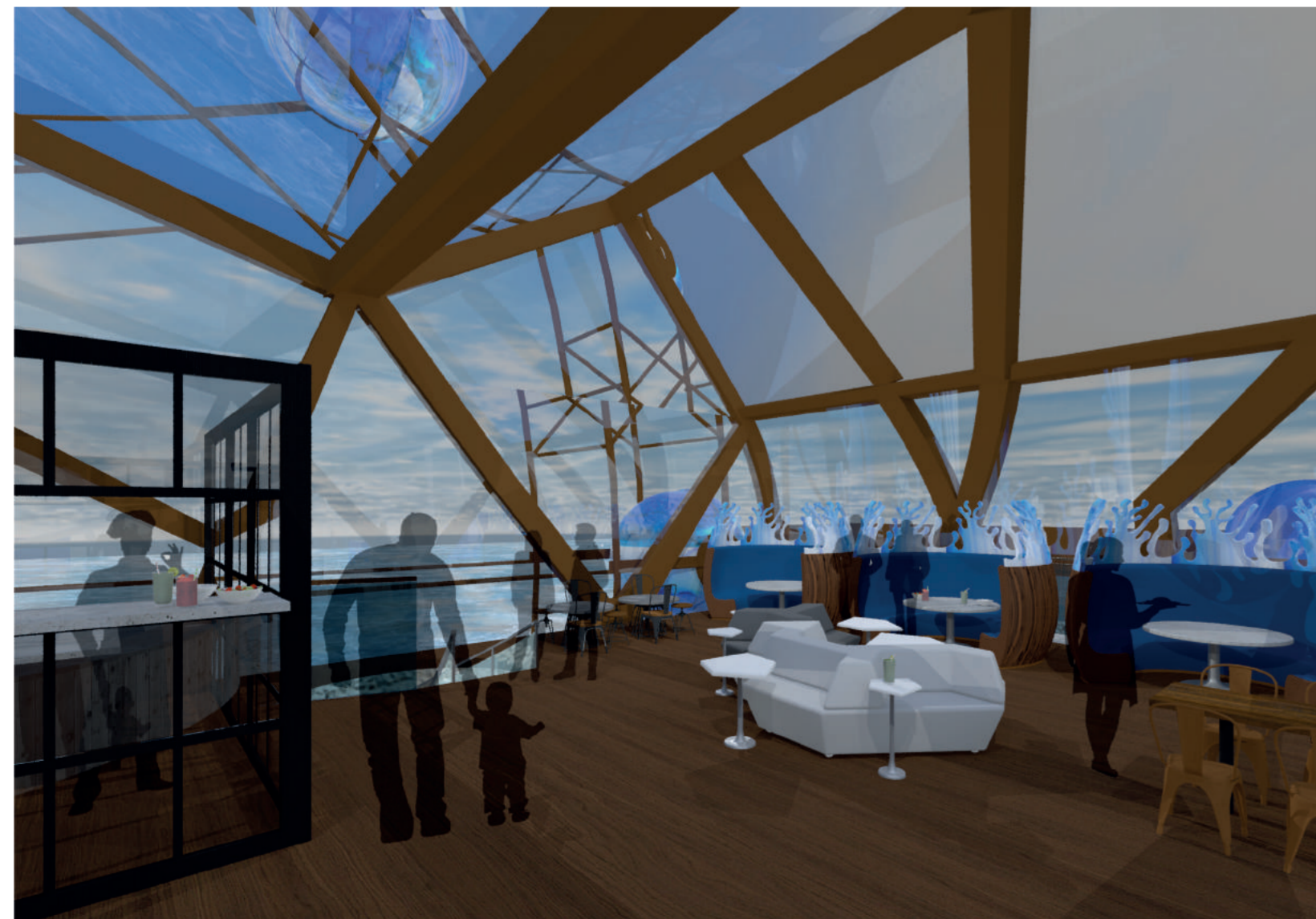
-1 lvl.



-2 lvl.



-3 lvl.



Visualisation 4-Ski Slope Building/Cafe



Sofa Detail Model-Melting Ice (1:10)

Floors Plan -Ski Slope Building