

The Blooming Mind: A spatial Dialogue of Neurodivergence

Site Research

Springburn Winter Gardens is located in Glasgow's Springburn Park. Built for public events and exotic plant exhibitions, it sits near key historic landmarks and reflects Springburn's industrial heritage and community identity. The site holds strong potential for cultural renewal and reconnecting people with nature.

Inside, the open-plan space is supported by sixteen steel columns. This flexible layout preserves the building's historic character while accommodating a variety of community uses, making it well-suited for multifunctional and adaptable design.

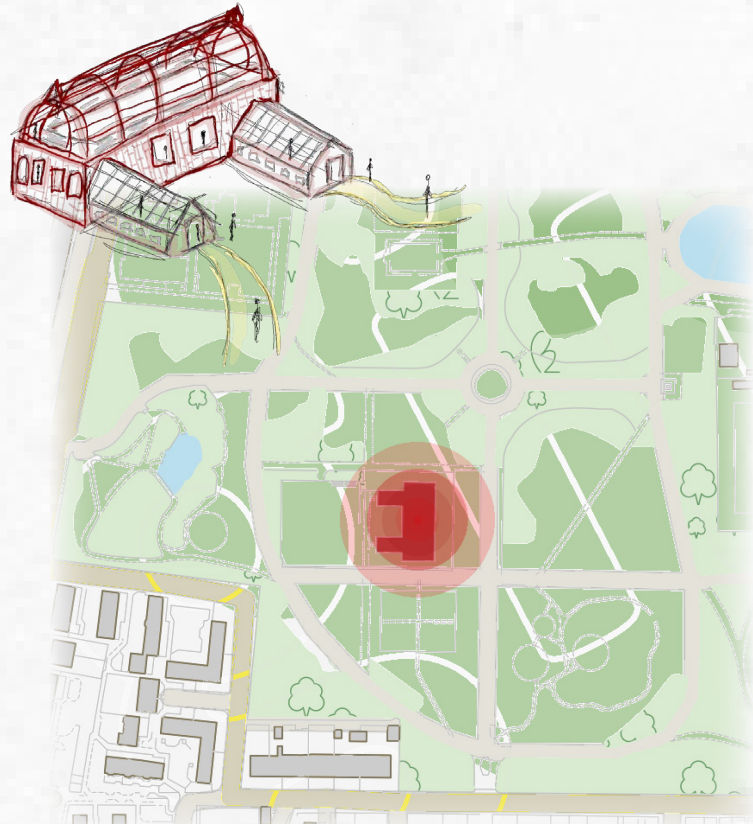
The glasshouse is built with red industrial brick walls and timber detailing, featuring large windows, an arched iron and glass roof, and curved semi-oval roofs on the two wings that reflect the form of the main structure.



Exterior view of abandoned Glasshouse.



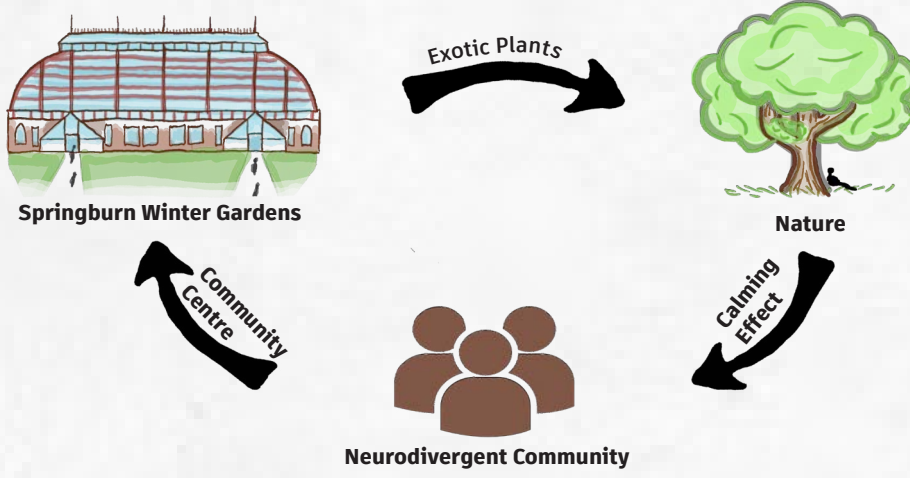
Interior view of the opens space and greenery that take over the whole space.



Location of Springburn Winter Gardens, Glasgow, UK.

Proposed Communication Centre

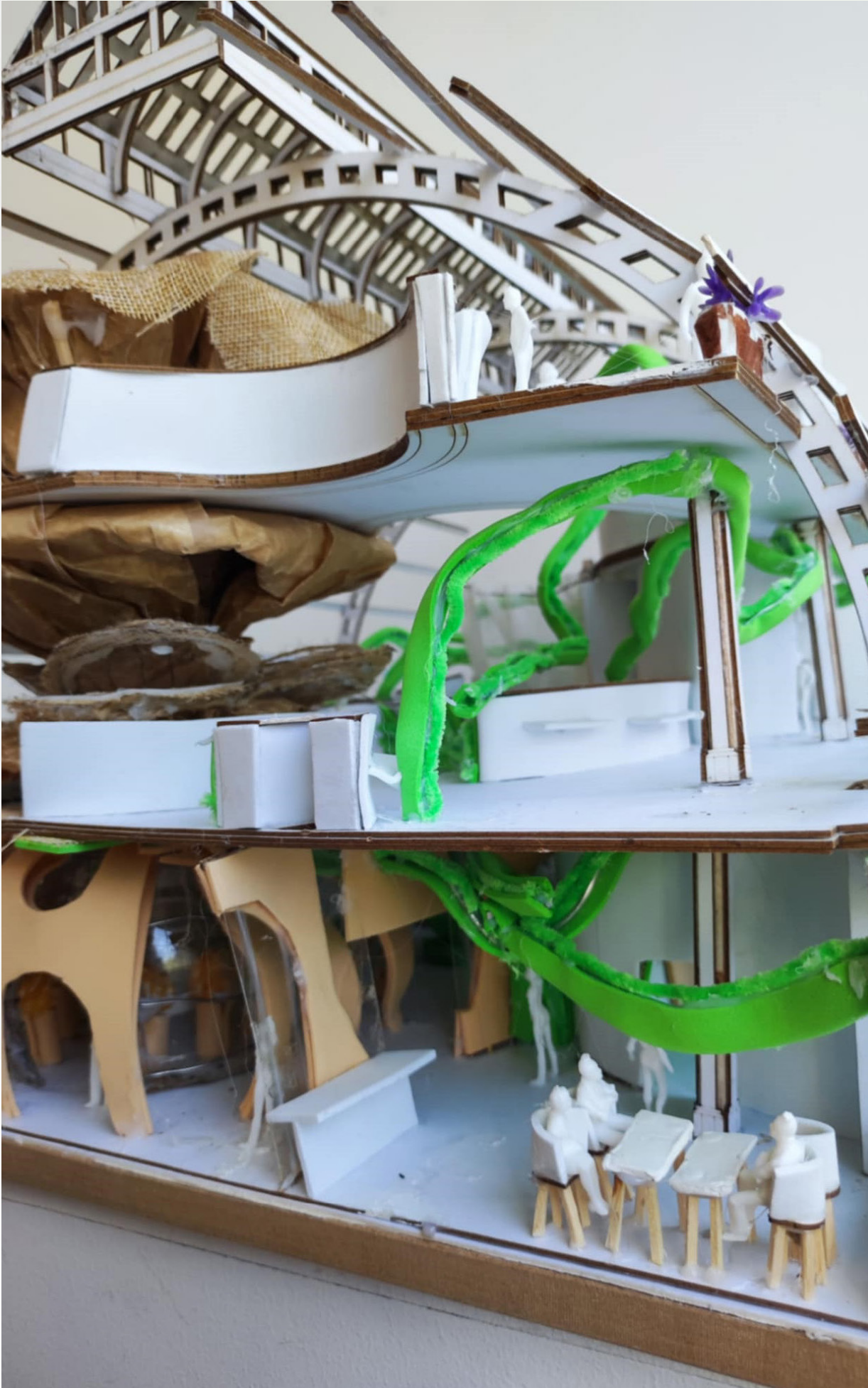
This project aims to create an inclusive community centre that breaks communication barriers between late-diagnosed neurodivergent and neurotypical adults. Using sensory-led design, nature-based activities, and shared emotional experiences, it promotes understanding, challenges stigma, and celebrates the strengths of people with ASD or ADHD.



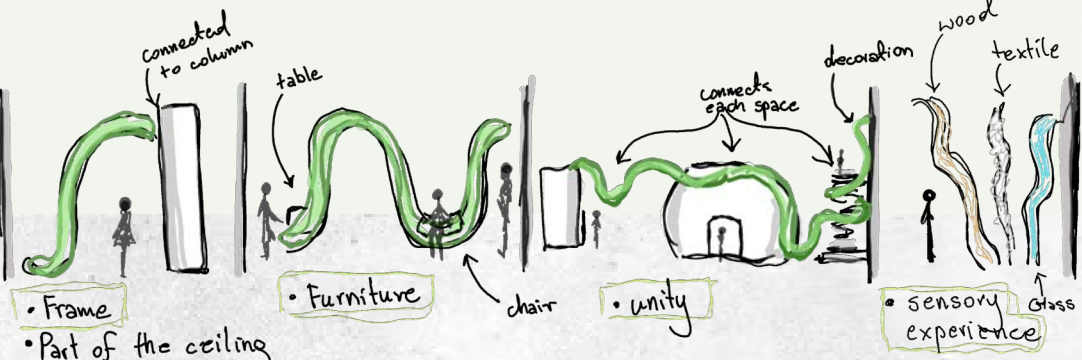
The design concept connects the building's botanical past with nature's calming effect on neurodivergent individuals, creating spaces that help them feel calm, safe, and accepted.

Proposed 3D Physical Section Model

The handmade sectional model presents a three-story design where flowing green vines create sensory pathways connecting all levels through a central flower structure, linking the structural framework to varied gathering spaces.



Full video of design concept and crafting : <https://www.youtube.com/watch?v=xkpAKmS-3fs>



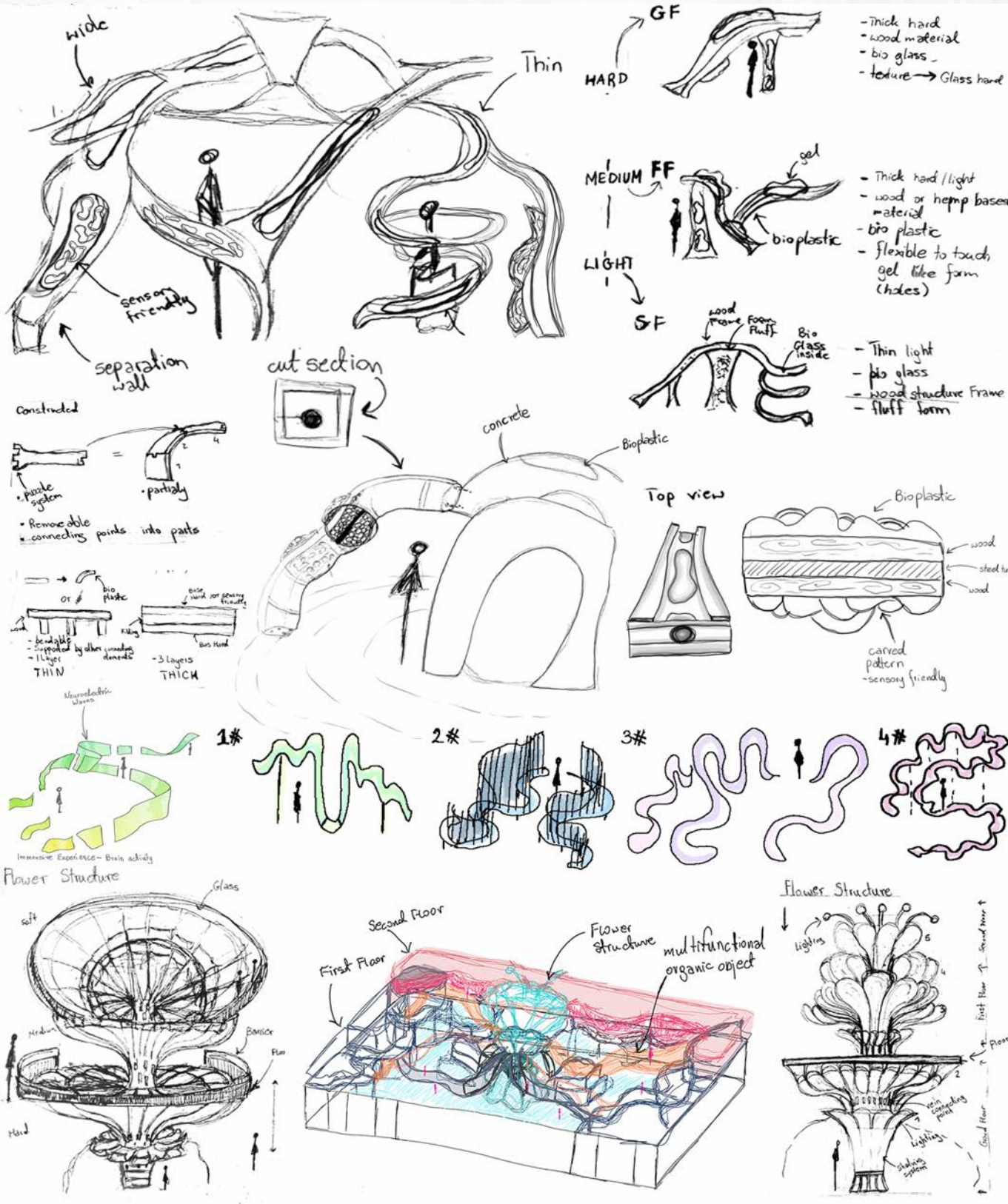
Vine Function Sketch



Reception space includes calming green sensory elements that support comfort and inclusivity from the moment visitors enter the space.



View of the micro garden exterior walls with nature-inspired shapes and vines that connect to the top level.



Concept sketches of vine and flower structure



Ground Floor – View of Open Space, Micro Garden Exterior, and Sensory Tactile Green Vines



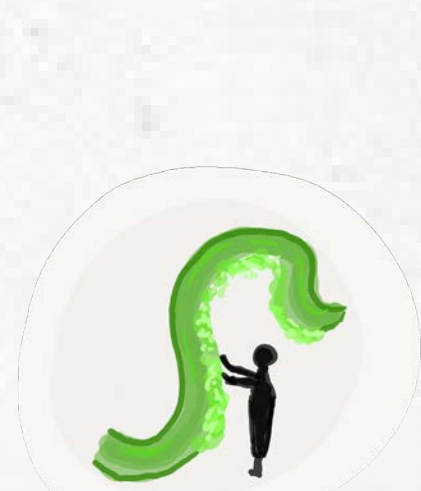
Ground floor - Breaking Social Barriers Through Shared Plant Care



Hydroponic System



Ground Floor - Comforting Tactile Bioplastic Vine for Anxiety Relief



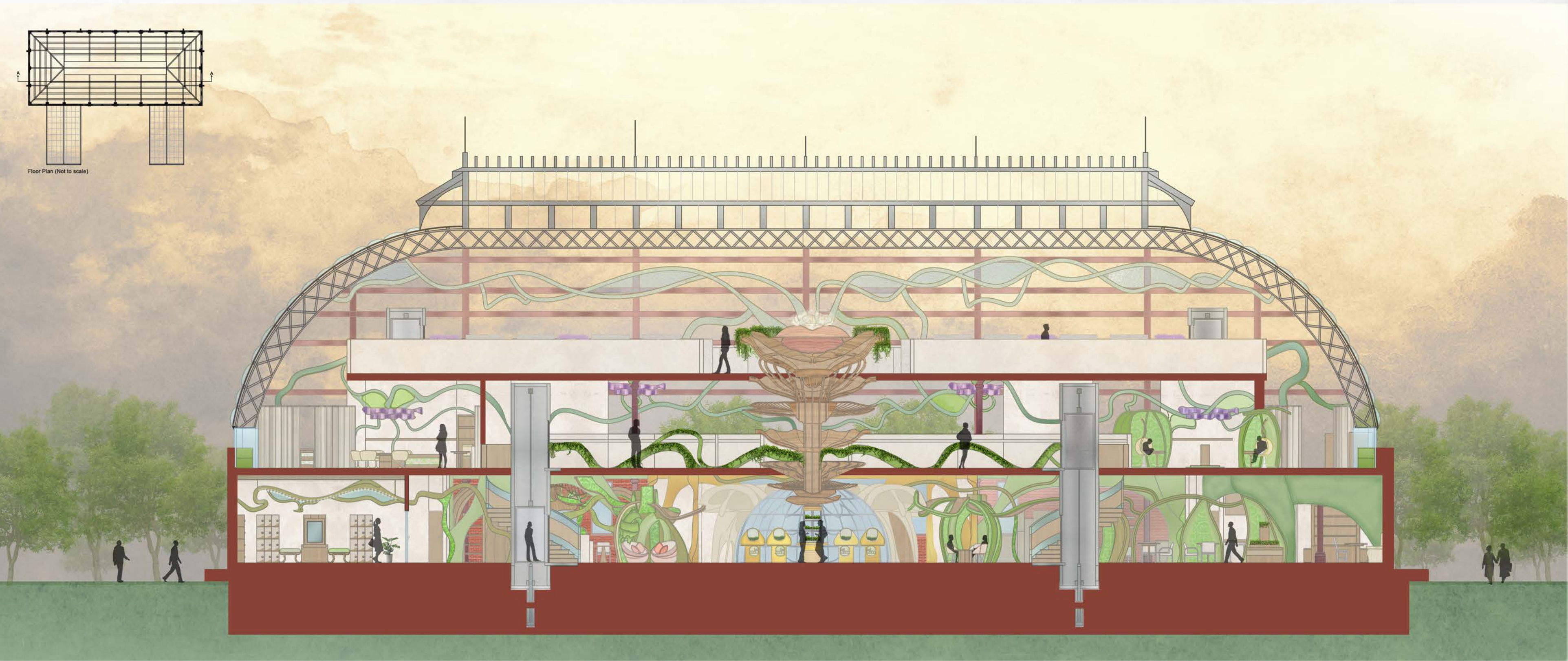
Tactile Vine Structure



First Floor - Multi-Level Connector Flower Structure

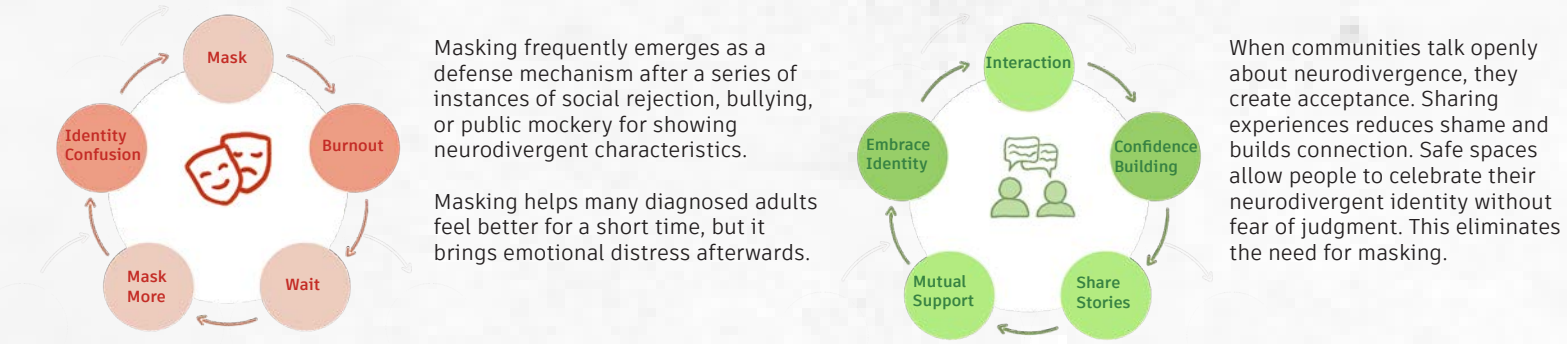


Flower Structure

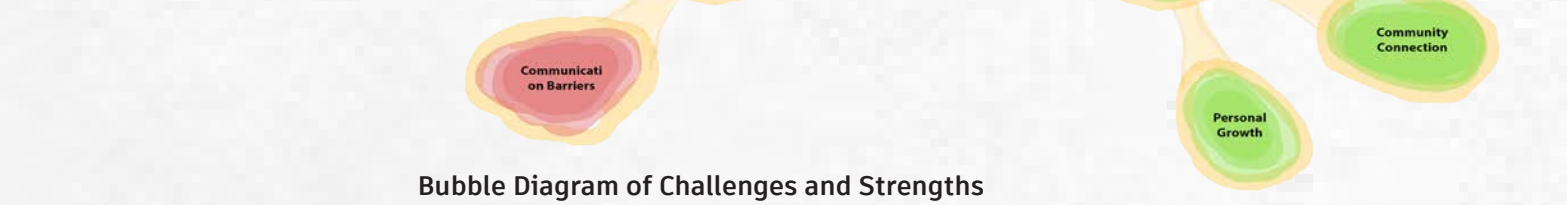


Proposed Long Section of the Three-Storey Building Shows Social Interaction Spaces Connected by Flower Structure and Sensory Vines, Maintaining Connection to Nature Throughout.

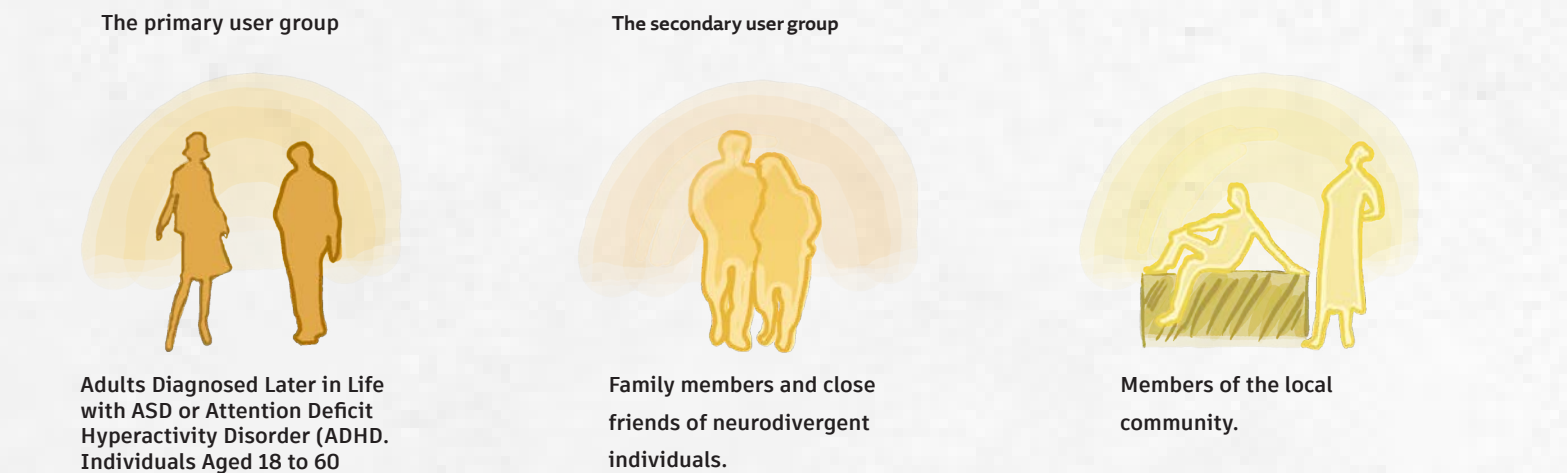
Through Masking → Through Authenticity



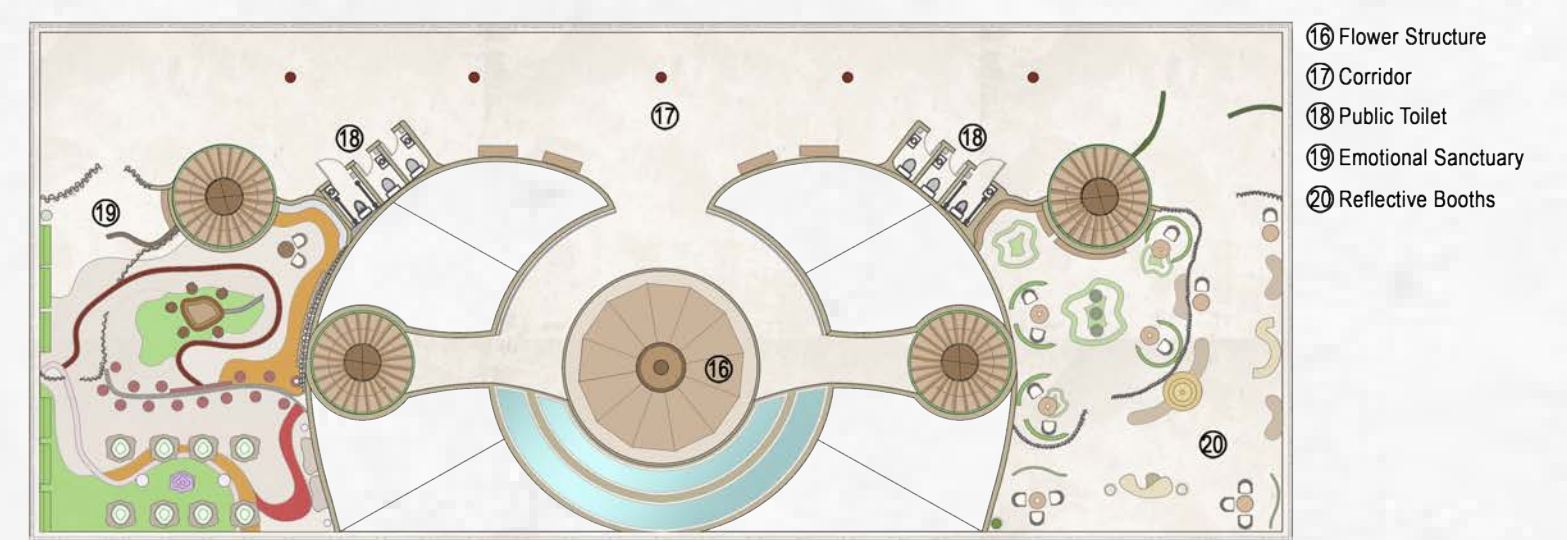
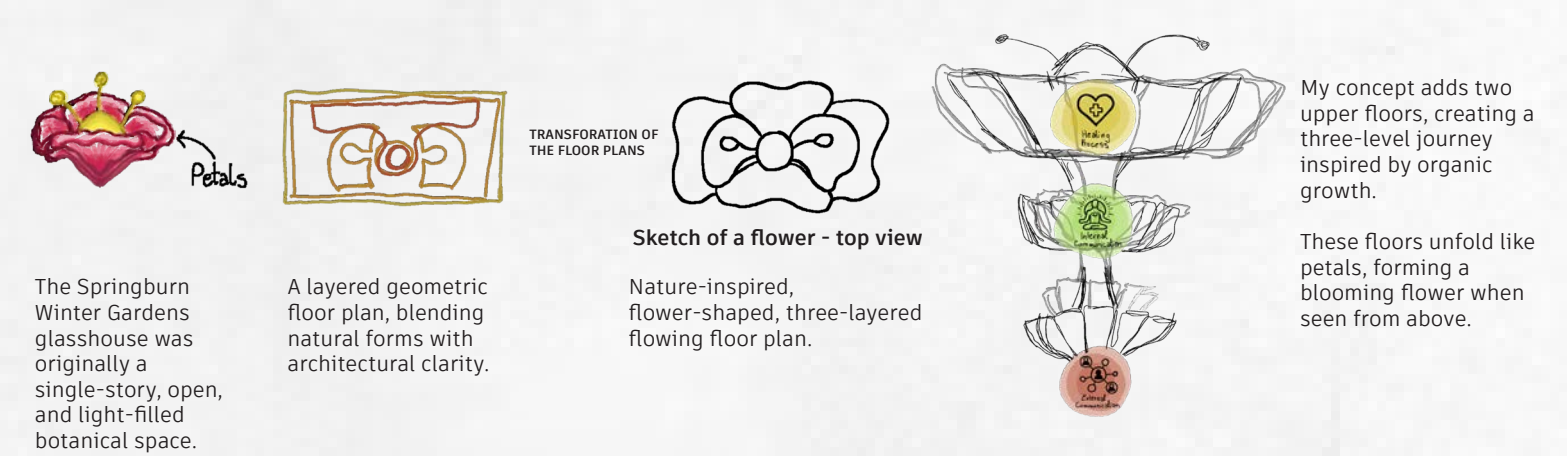
Transformation in neurodivergent experiences



User Group



Design Concept



Visualisations



Second Floor - View of the Horticulture Therapy space.



First Floor - Aromatherapy Space.

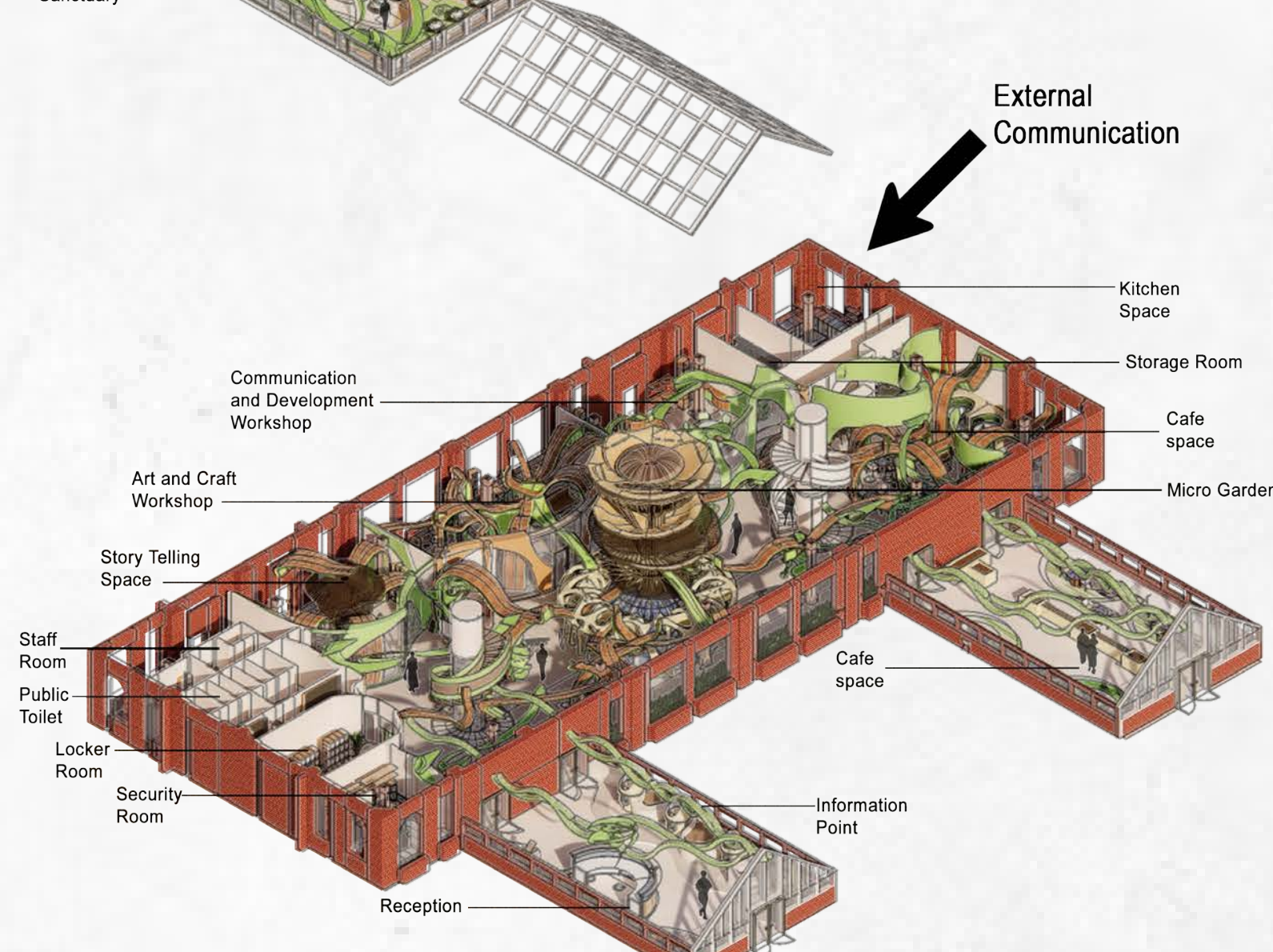
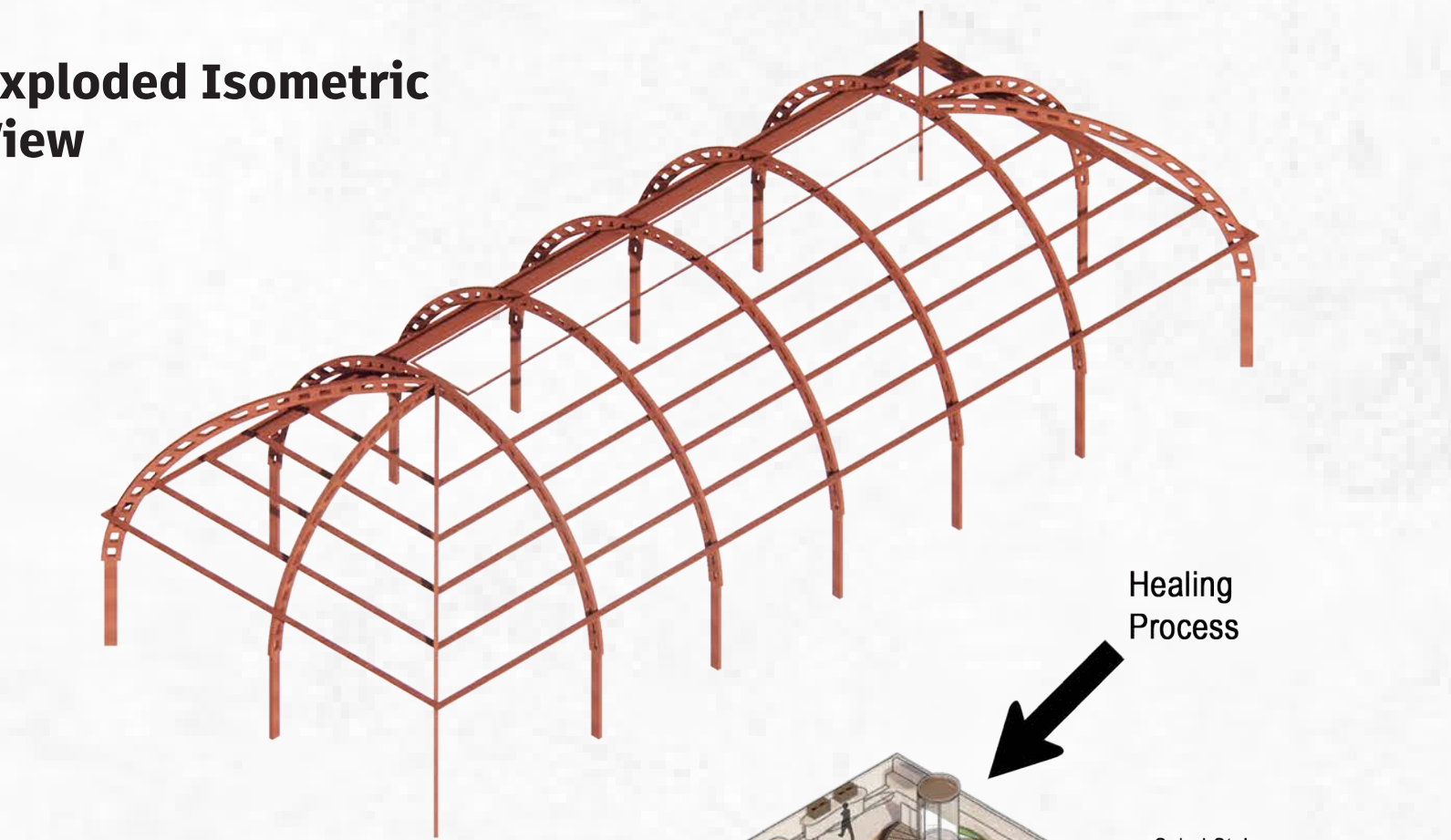
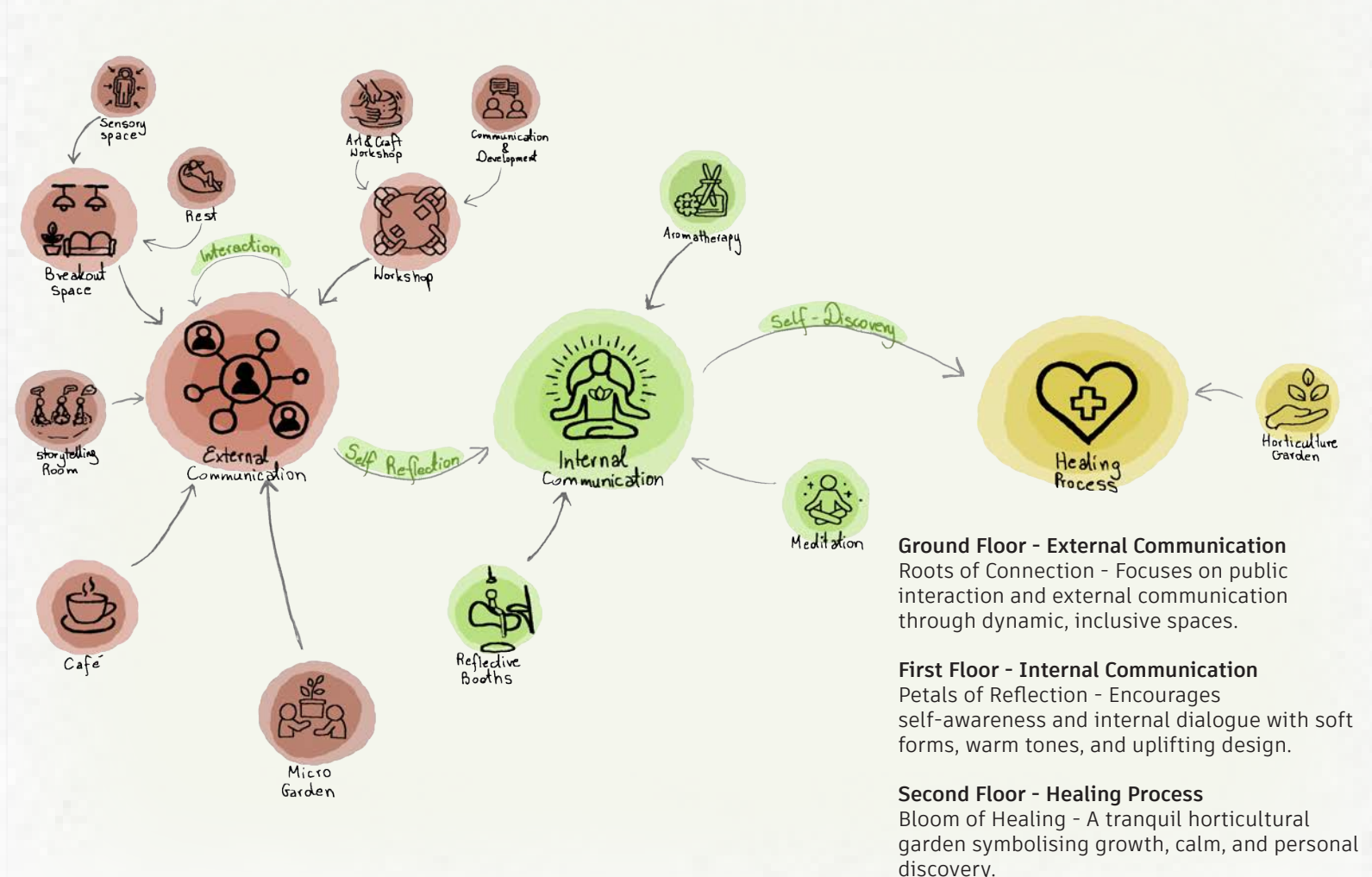


Ground Floor - Open Space Cafe surrounded by green vines.

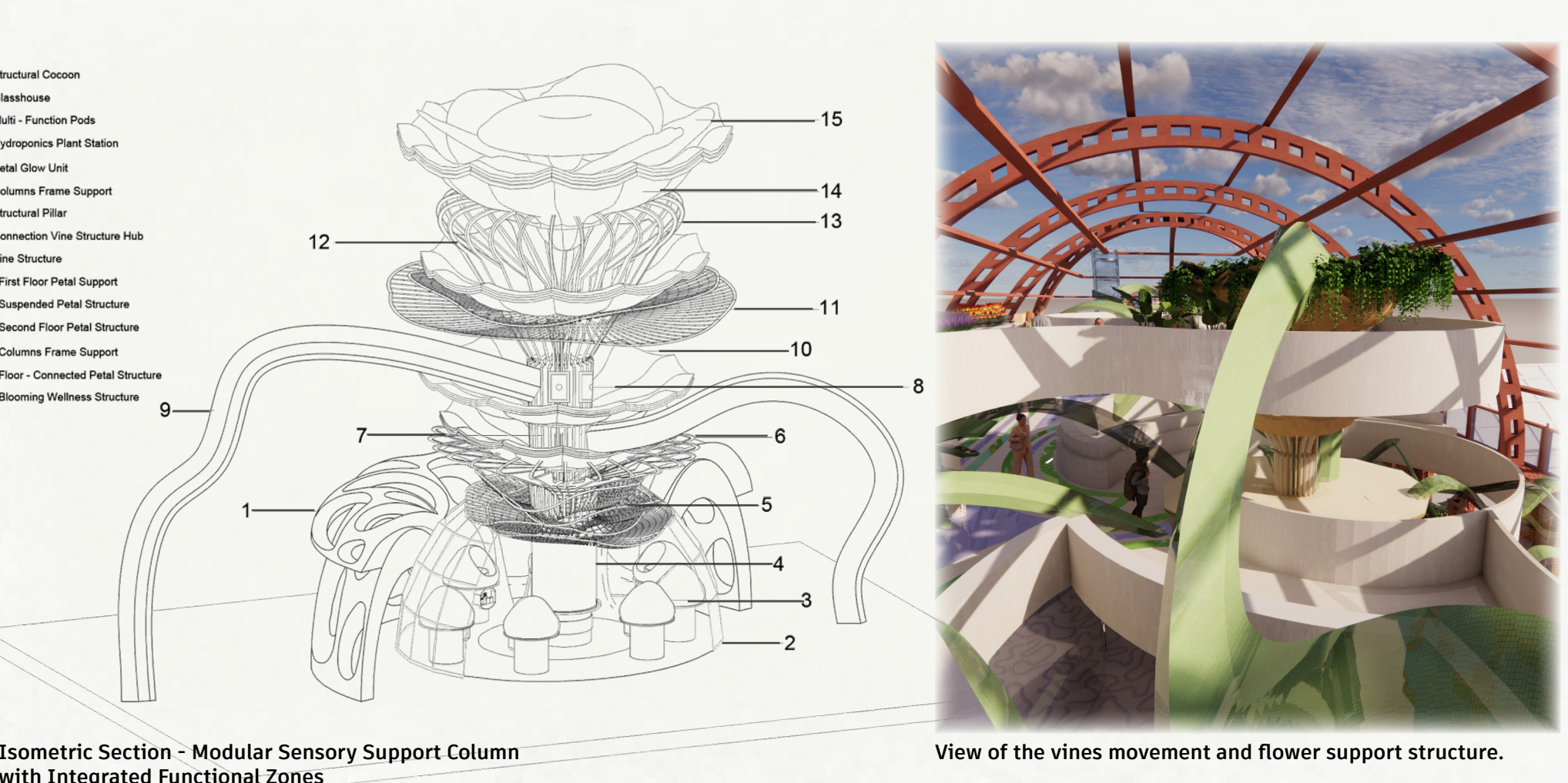


Ground Floor - View of the storytelling room.

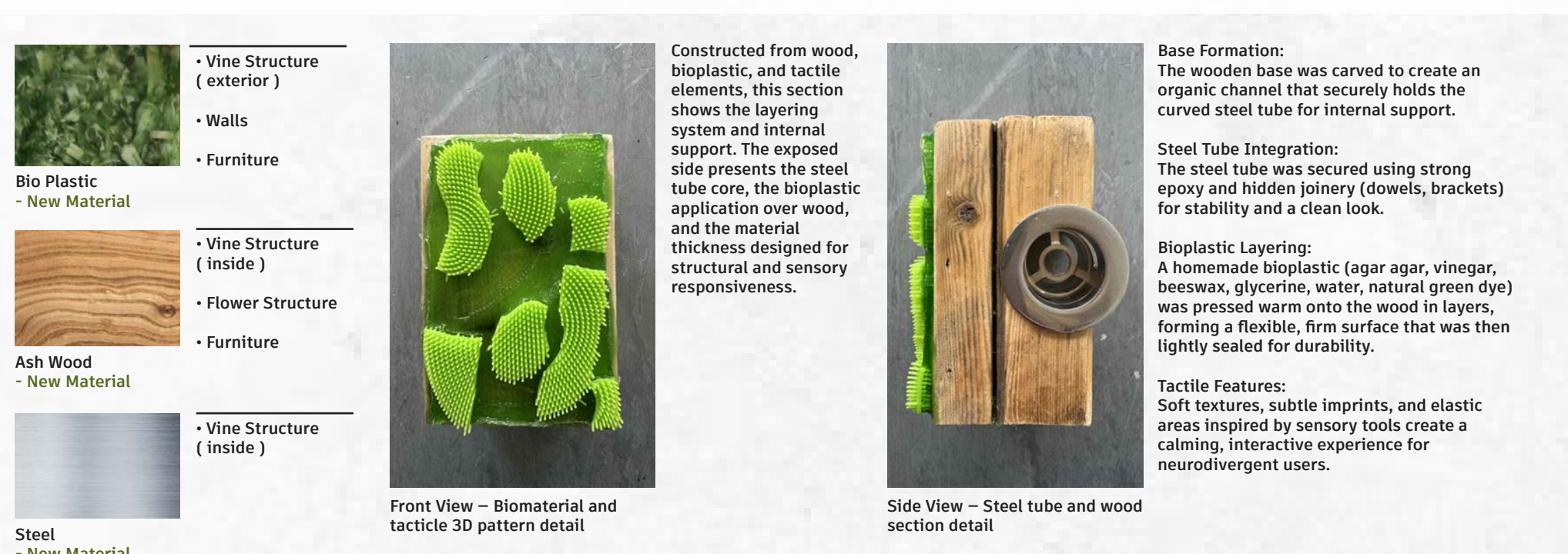
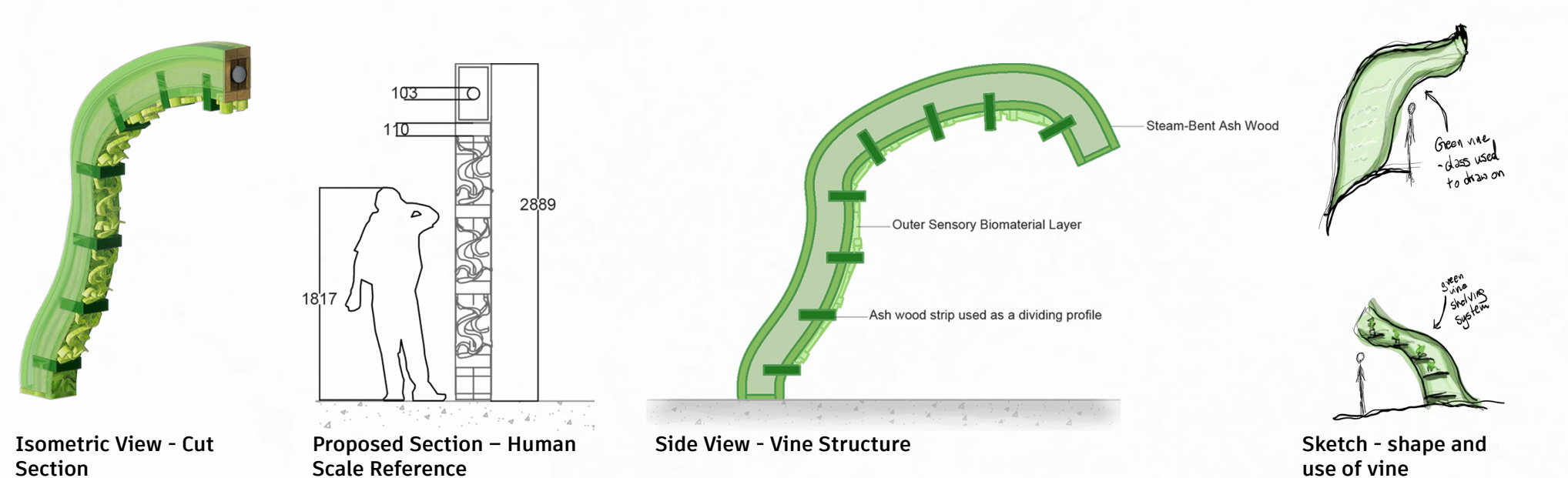
Proposed Program



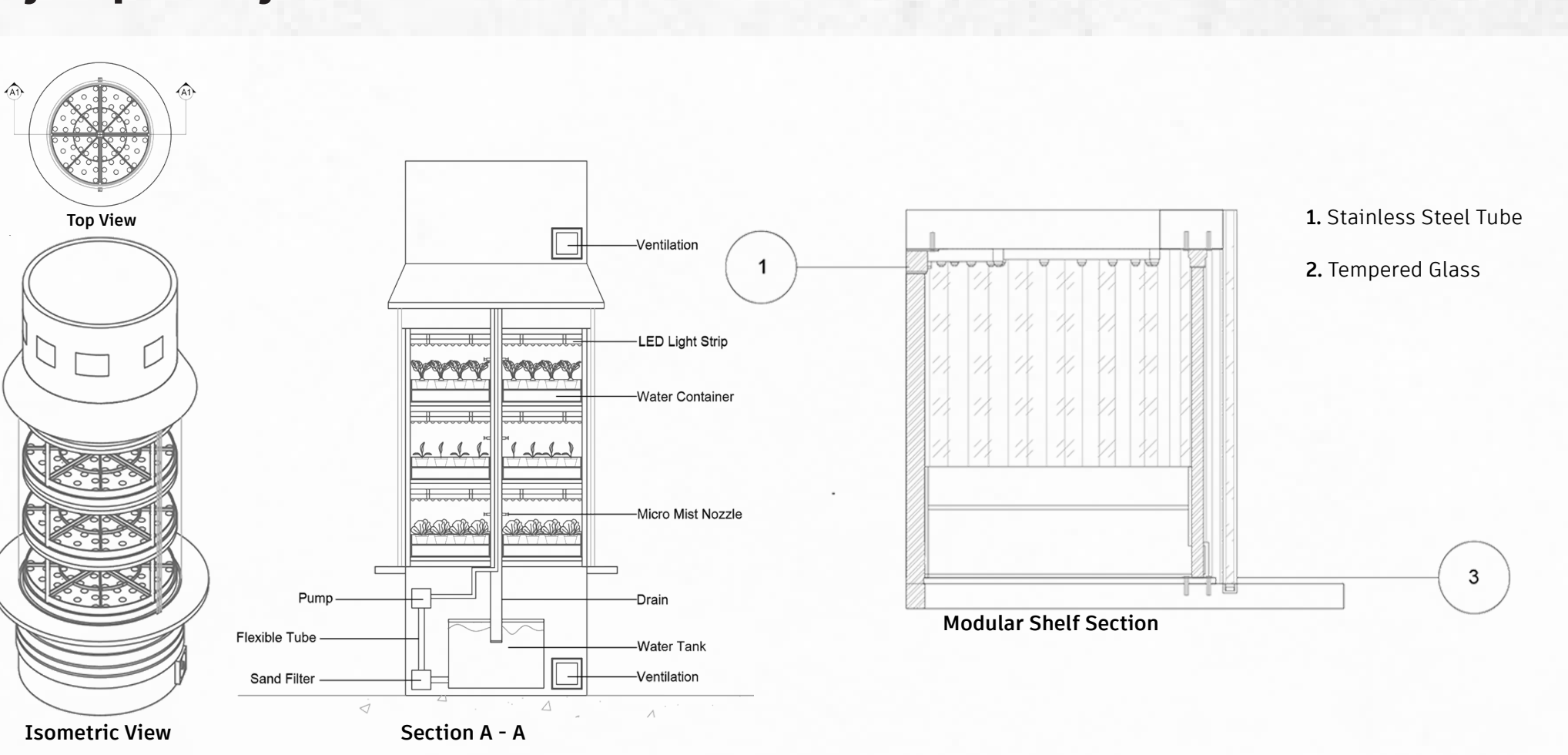
Flower Structure and Sensory Vine detail



Sensory-Tactile Green Vine in detail



Hydroponic System in detail



Materials

