



MAKING PEACE MEDITATION CABINS

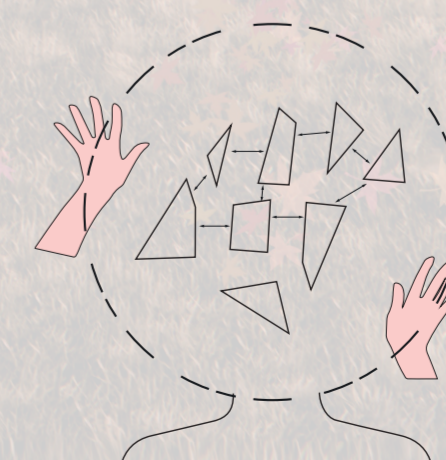
Inspired by the Japanese pottery repairing technique of Kintsugi, which pieces broken pottery back together with gold lacquer, and the philosophy of Wabi Sabi, which finds beauty in the flawed, this project seeks to enable users to create unique meditation cabins throughout Tokyo and spend time healing their inner peace in the imperfect modern world. Located along rivers and waterways, 'Making Peace' meditation cabins seek to reconnect Tokyo residents to water, harnessing the calming element as part of the design. The small flat-pack retreats allow users to explore mindfulness through making as they build and configure the cabin as desired, finding pleasure and pride as they embrace the craft and enjoy the resultant meditation space, disconnected from the busy digital world and in search of mindfulness.

CONCEPT: MINDFULNESS THROUGH MAKING

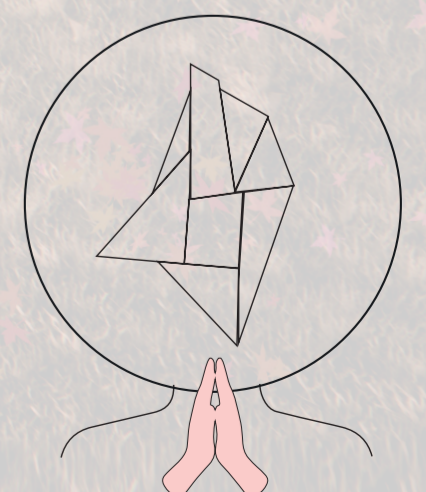
The meditation cabin is a metaphor for the user's state of mind. At first a fragmented assortment of jumbled pieces, before being carefully put back together to finally create something whole and beautiful.



Stressful disjointed pieces reflects emotions upon arrival at cabin.



Mindful piecing back together reflects emotions during cabin building.



Peaceful restoration of harmony reflects emotions during meditation.



MAKING PEACE WATERSIDE LOCATIONS AND FLEXIBLE CONFIGURATIONS

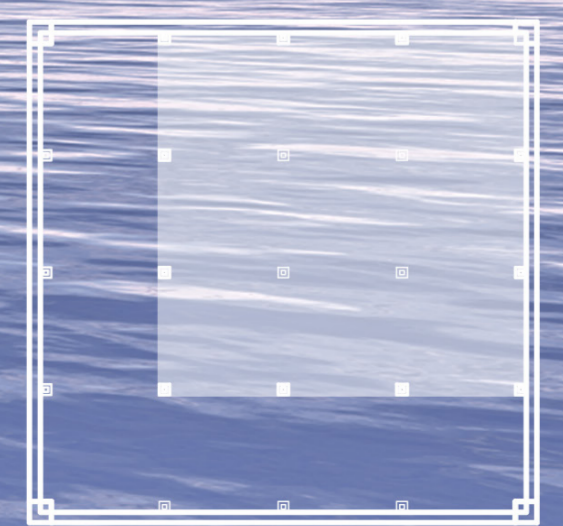
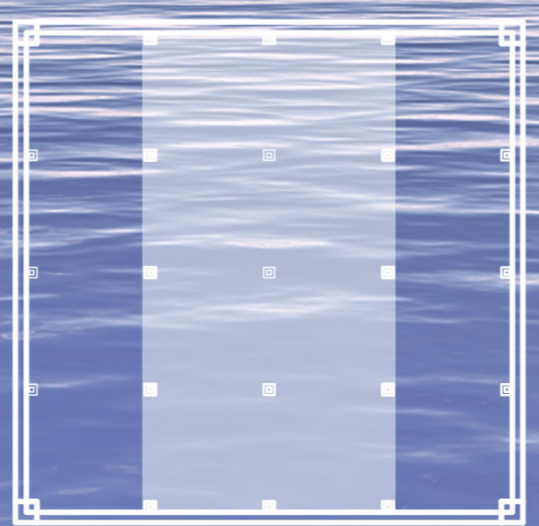
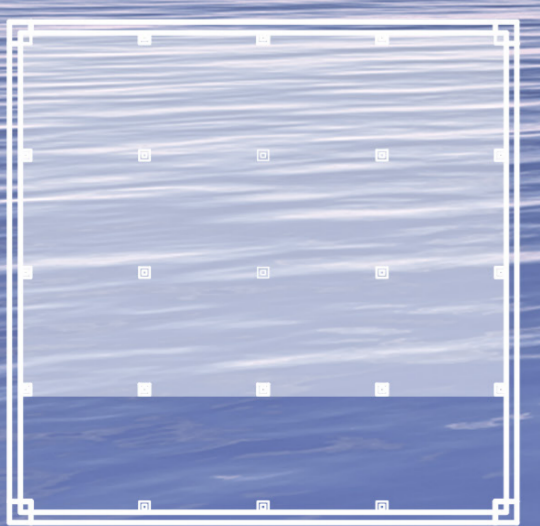
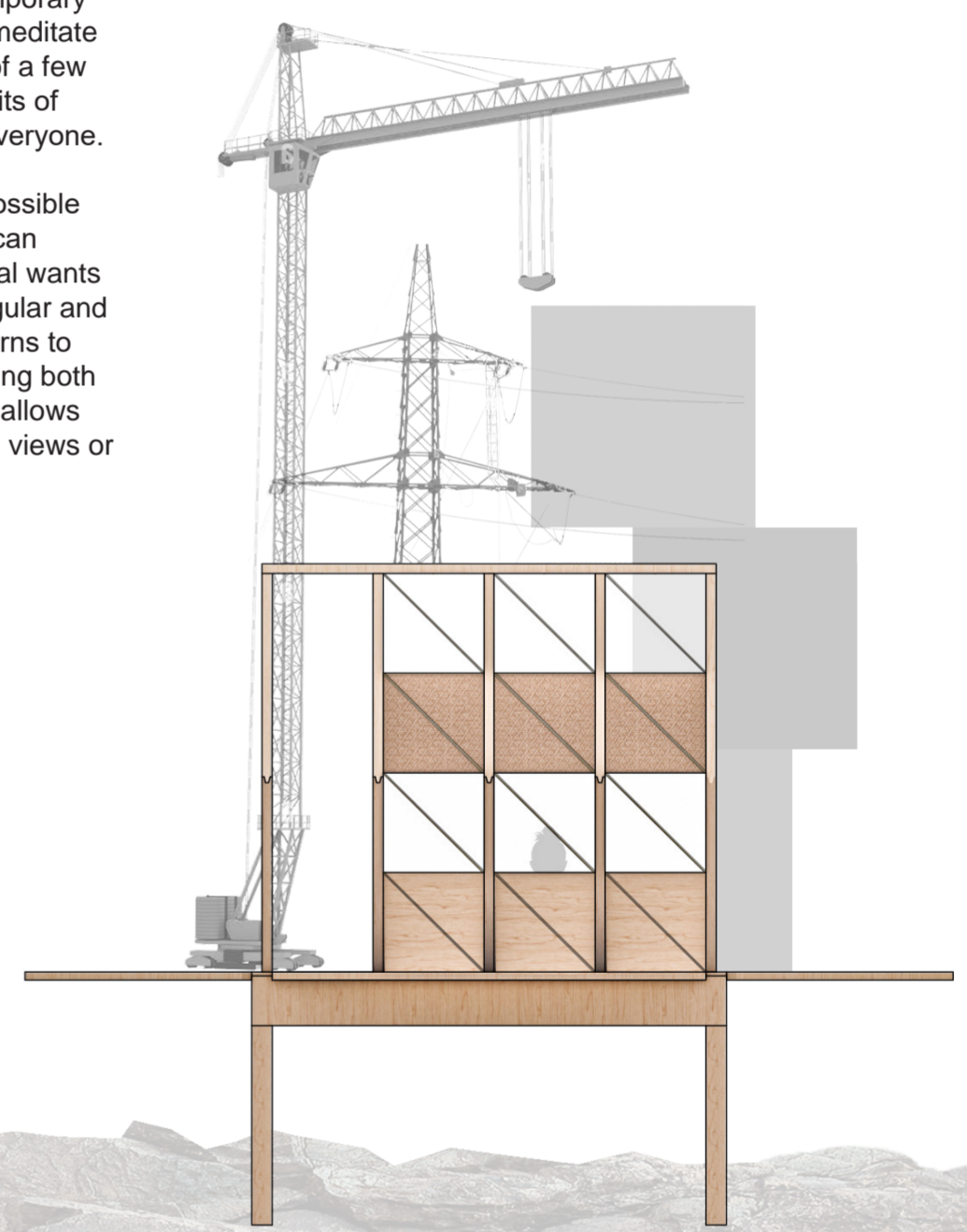
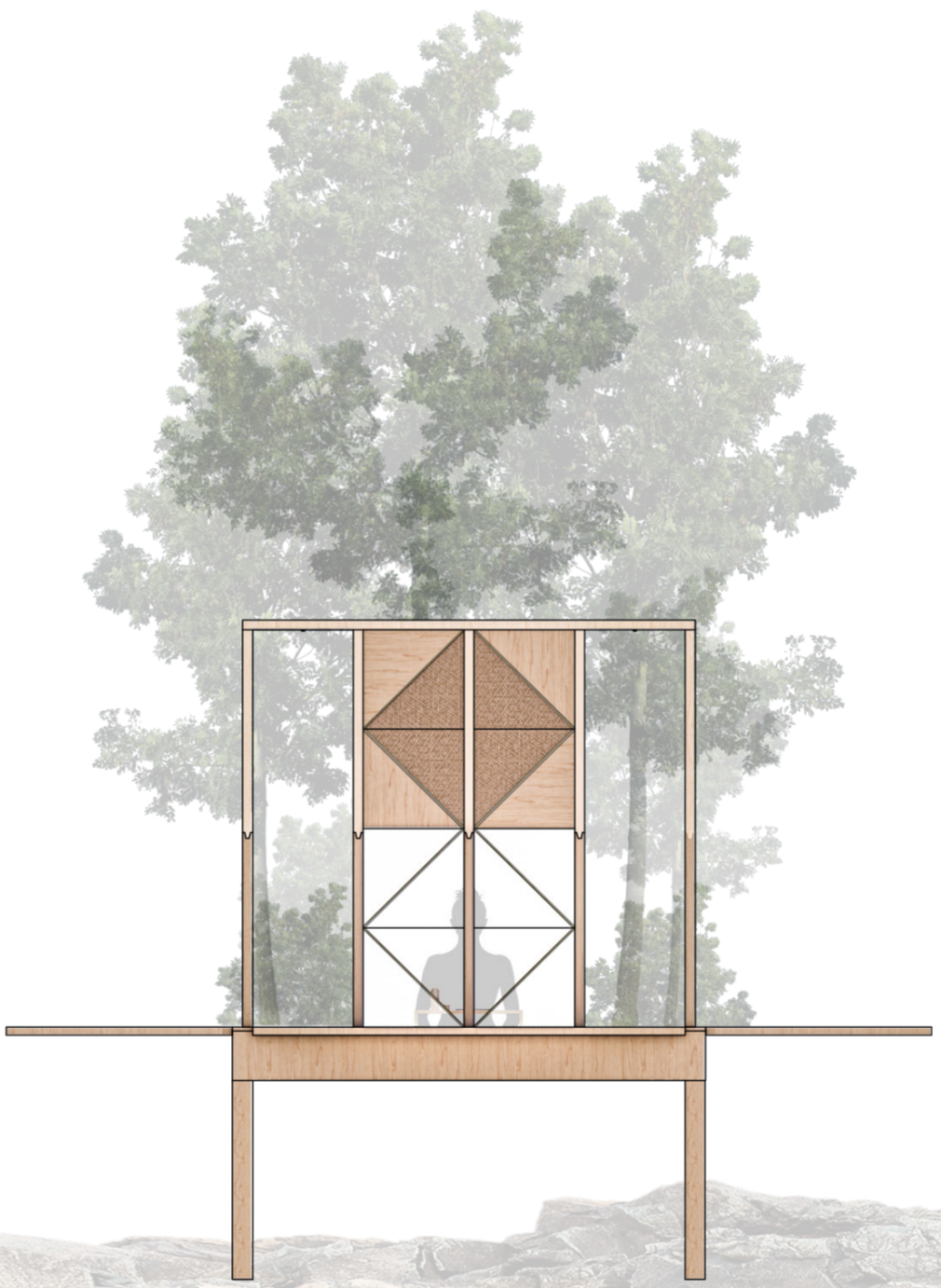
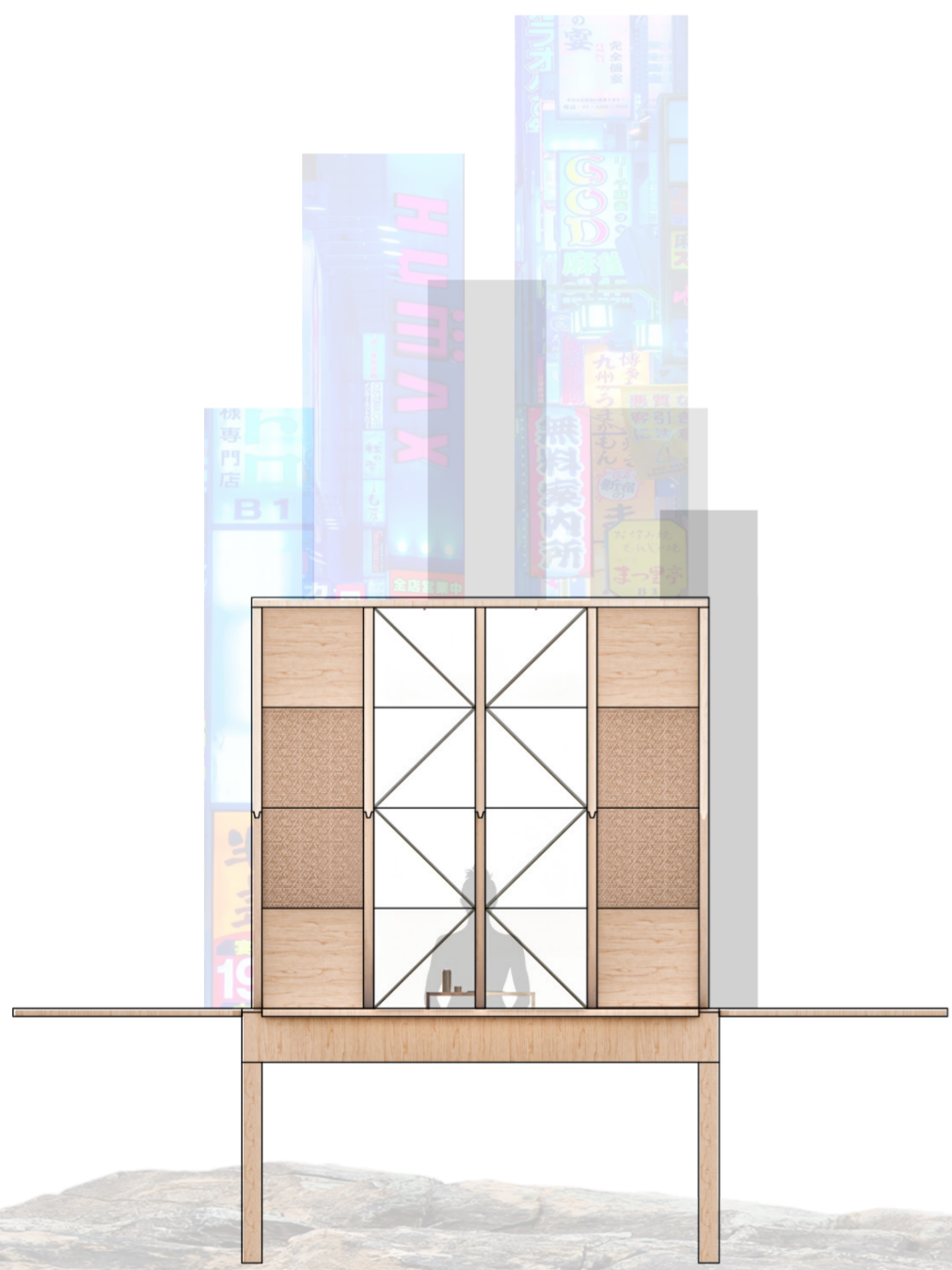
URBAN AREAS

NATURAL AREAS

REGENERATION AREAS

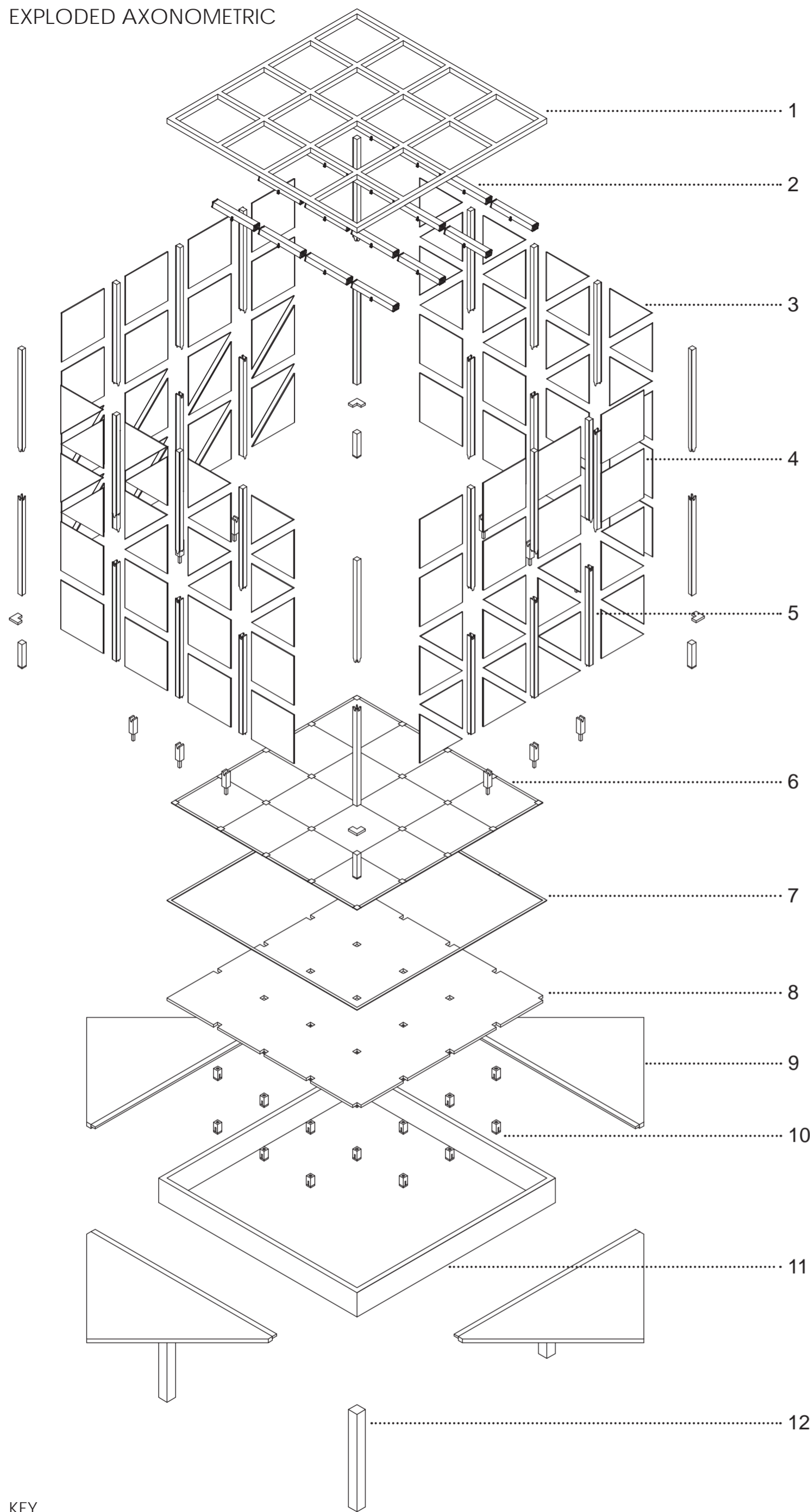
The cabins are designed to be temporary structures which users can build, meditate in and dismantle over the course of a few hours, allowing the joys and benefits of meditation to be experienced by everyone.

The flat pack cabins have many possible configurations and as such users can create a space to suit their personal wants and needs. A combination of triangular and square panels allow different patterns to be arranged on the facade and using both transparent and opaque materials allows for the creation of beautiful framed views or intimate privacy.



Posts and panels can be configured flexibly to create personalised structures and facades within a maximum 5.5m² footprint. Depending upon how the space is configured users can create both enclosed and open air spaces.

EXPLODED AXONOMETRIC



KEY

- 1. Timber Roof Structure
- 2. Fabric Blinds
- 3. Magnetised Triangular Wall Panels
- 4. Magnetised Square Wall Panels

- 5. Timber Posts
- 6. Tatami Floor Matting
- 7. Integrated LED Floor Light
- 8. Timber False Base

- 9. Timber Lid Panels
- 10. Timber Anchor Posts
- 11. Timber Base Box
- 12. Timber Ground Posts

CONSTRUCTION PROCESS



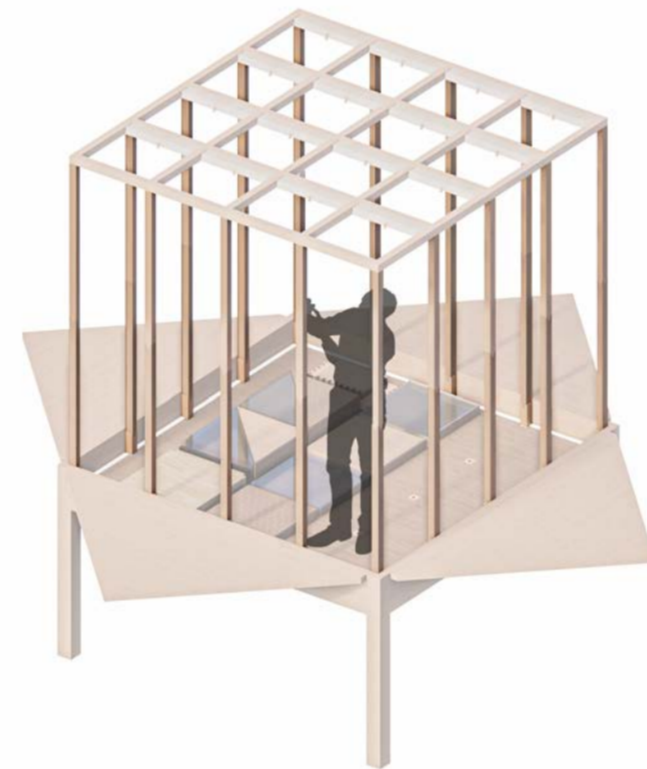
1. FLAT PACK CABIN TRANSPORTED TO SITE



2. PRIMARY STRUCTURE BUILT BY WORKERS



3. BOX OPENED TO REVEAL BUILDING PIECES
5 minutes



4. POSTS CONFIGURED AND BUILT AS DESIRED
15 minutes



5. MAGNETISED PANELS INSERTED BETWEEN POSTS
25 minutes



6. FLOOR MATTING PANELS LAID
10 minutes



7. BLINDS ARRANGED AS DESIRED
5 minutes



8. INTERIOR ARRANGED AND CABIN USED
Time Varies



9. CABIN DISMANTLED AND PIECES RETURNED TO BOX
30 minutes



HINOKI

A beautiful Japanese wood, Hinoki is used for the wooden elements of the cabin. Traditionally used in the construction of sacred temples, the meditation cabins benefit from this same sense of quality, creating sacred spaces that users can retreat to in order to escape the real world.



SHOJI

Shoji is a traditional Japanese dividing screen made from thick, translucent paper stretched over a wooden frame and in this case coated to make it waterproof. Creating privacy yet allowing faint light and sound through, users can detach from the blurred outside world.



TRANSPARENT ACRYLIC

To create transparency, allow light into the interior and frame views within Tokyo, some panels are clear perspex acrylic. Acrylic is used to create the illusion of glass yet in a more lightweight, durable and safer form given the temporary nature of the design.



SUDARE

Sudare is a traditional form of bamboo blind or screen. They are made from bamboo stems rolled into thin straws which are sewn together. The thin gaps between the straws allows for faint light to pass through and for air to circulate - perfect for the small cabins.



TATAMI

Tatami is a traditional style of Japanese flooring made from woven rush grass and finished with a fabric edge. Tatami is a comfortable, safe and soft flooring and its calming scent and natural texture help to create a relaxed environment within the meditation space.





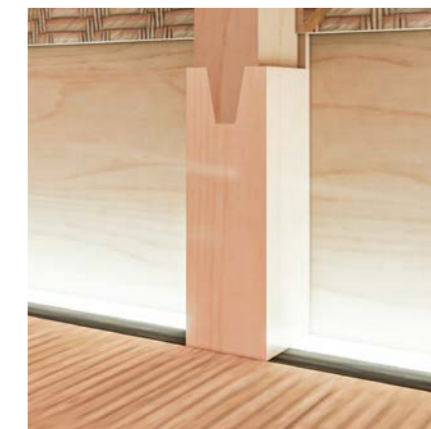
GILDED EDGE DETAILS

In tribute to Kintsugi, panel pieces feature a gilded gold edge, showcasing the beauty of the connections and making process.



JAPANESE JOINERY DETAILS

Simple and traditional joinery creates beautiful features, allowing components to slot together easily and removing the need for screws.



LIGHTING DETAILS

Integrated floor lighting casts a soft ambient glow, illuminating the cabin with warm, relaxing light for a calming experience.