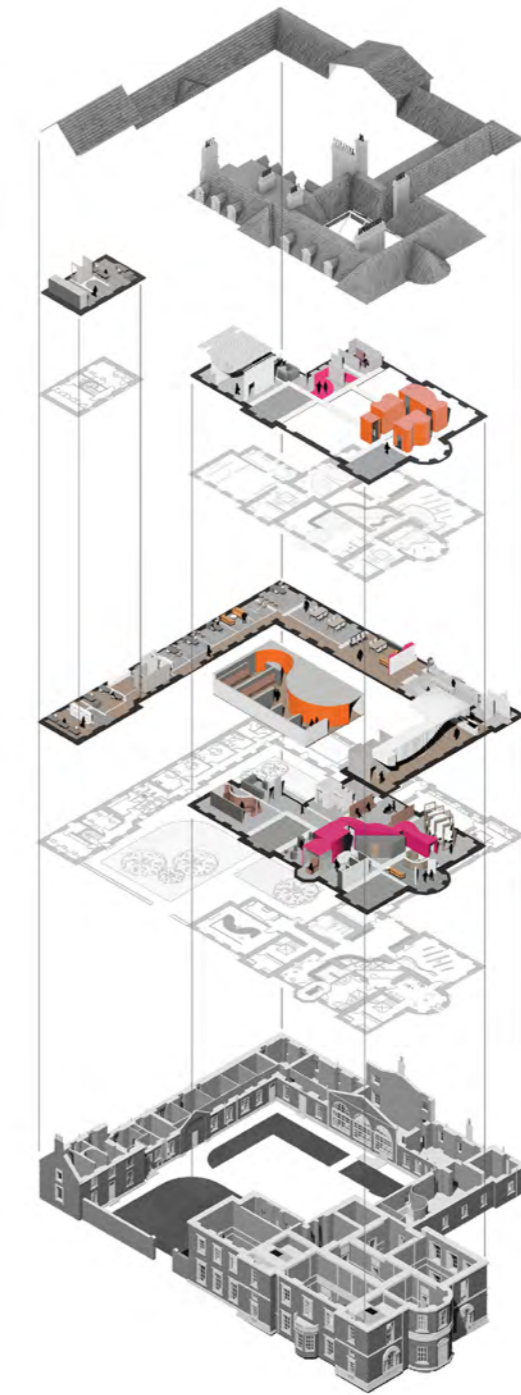


01. MAJOR PROJECT: THE SOUND OF MISOPHONIA



4

Externally, the form mimics soundwaves clashing through the Georgian style interior, contrasting fully and disrupting the space. The forms are clad with silvered glass shards on the exterior side, with alternating directions, it bounces the natural light uncontrollably – visually expressing the uncontrollable aspect of misophonia.



Clad with flat aluminium allowing sound to be bounced off all surfaces

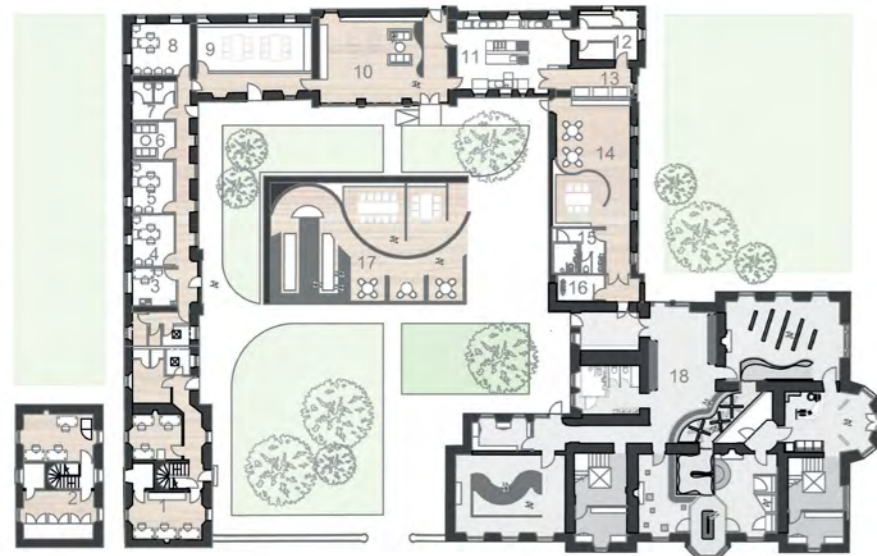


Interior clad with perforated metal with foam backing.



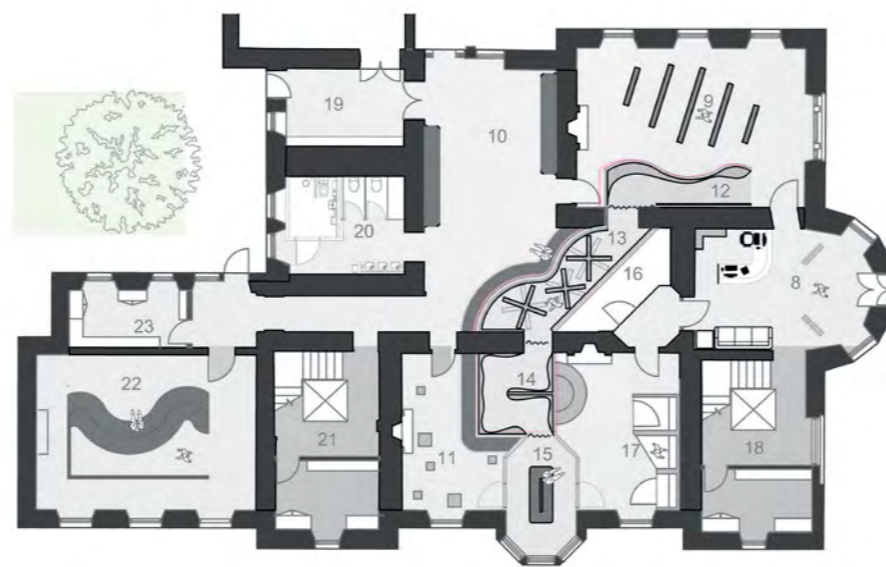
Rubber Cork flooring and Nonwoven Polyethylene seating and acoustic ceiling tiles, to maximise sound absorption.

Bush House Plan



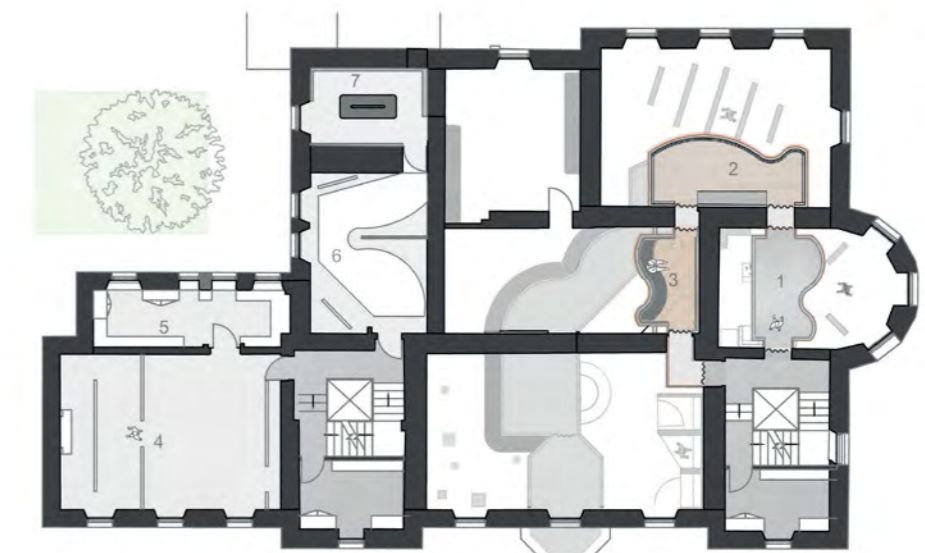
First Floor Plan
Scale 1 : 400

1. Main Office/ Store/ Managers Office/ Staff Kitchen/ Staff Toilet
2. Technician Office/ Storage
3. First Aid Room
4. Consultation Room
5. Therapy Space
6. Quiet Room
7. Sound Proof Booths
8. Consultation Room
9. School Environment
10. Art Room
11. Kitchen
12. Changing Space/ Cleaners Cupboard
13. Servery
14. Inner Cafe Area
15. Unisex Toilets
16. Cloak Room
17. Outdoor Cafe Area
18. Exhibition Space



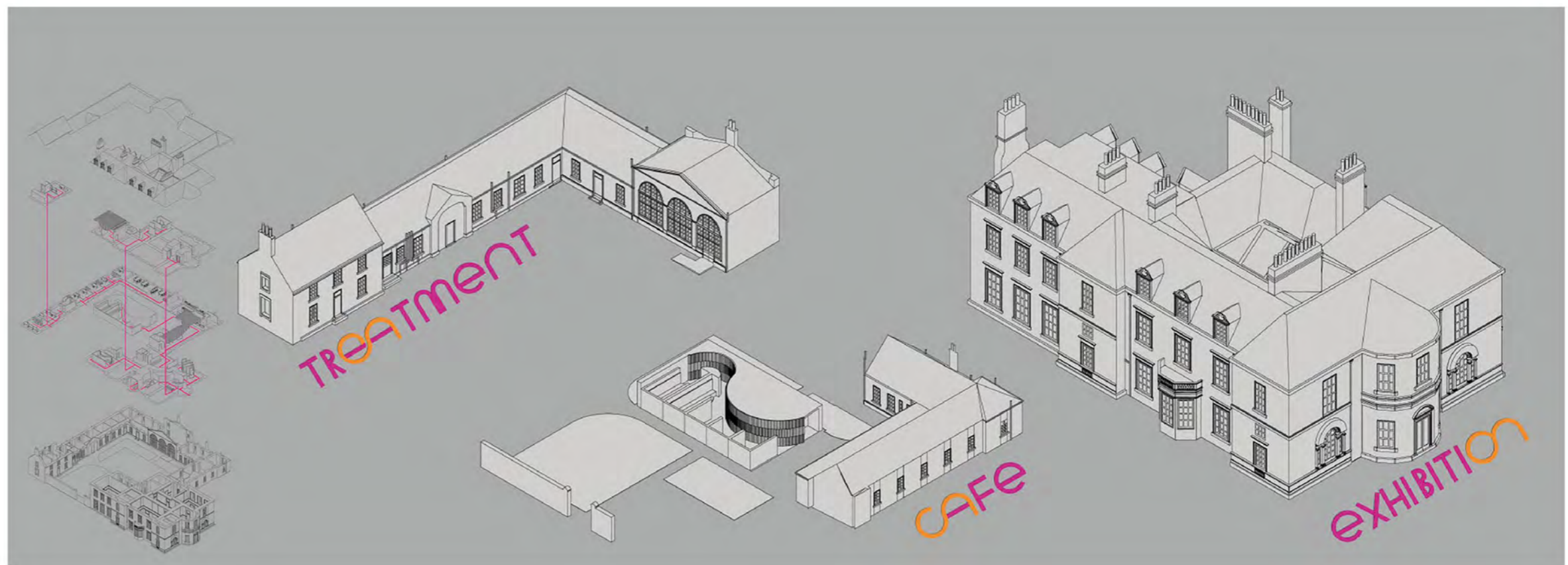
Ground Floor Exhibition Plan
Scale 1 : 150

8. Entrance/ Reception
9. Art Gallery Visual Work produced in Art Therapy Room
10. Seating area/ Connection to cafe, toilets and rest of exhibition
11. Art Gallery (disruption of path)
12. Acoustically insulated walkway
13. Polystyrene Room
14. Acoustically insulated walkway
15. Tranquil Bubble/ Viewing Area
16. Storage/ Cleaning Cupboards
17. Interactive Sound Booths
18. Stairs/ Lift
19. Connection to Inner/ Outer Cafe
20. Unisex Toilets
21. Stairs/ Lift
22. Projection Room / Sharing stories and informing visitors about the Condition
23. Storage/ Cleaning Cupboards



First Floor Exhibition Plan
Scale 1 : 150

1. Aluminum Room/ Harsh Acoustics
2. Perforated Room/ Medium Acoustics
3. Polyethylene Room/ Soft Acoustics
4. Art Gallery
5. Storage for Gallery
6. Virtual Misophonic Installation including 'Pavegen' ramp to power the Projection
7. Quiet space to read personal stories about Misophonia



Key:

1. Tranquil Bubble/ Viewing Area
2. Acoustically insulated walkway
3. End of pink Acoustic Tunnels
4. Polyethylene Room/ Soft Acoustics
5. Polystyrene Room
6. Storage/ Cleaning Cupboards
7. Perforated Room/ Medium Acoustics
8. Acoustically insulated walkway
9. Art Gallery Visual Work produced Misophonia Sufferers
10. Cloak Room
11. Unisex Toilets
12. Indoor Cafe Private Seating
13. Indoor Cafe
14. Art Room for Misophonia Sufferers

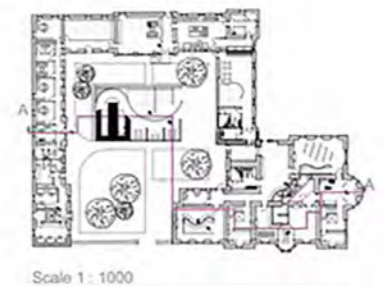


Scale 1 : 1000

Section B - B
Scale 1 : 100

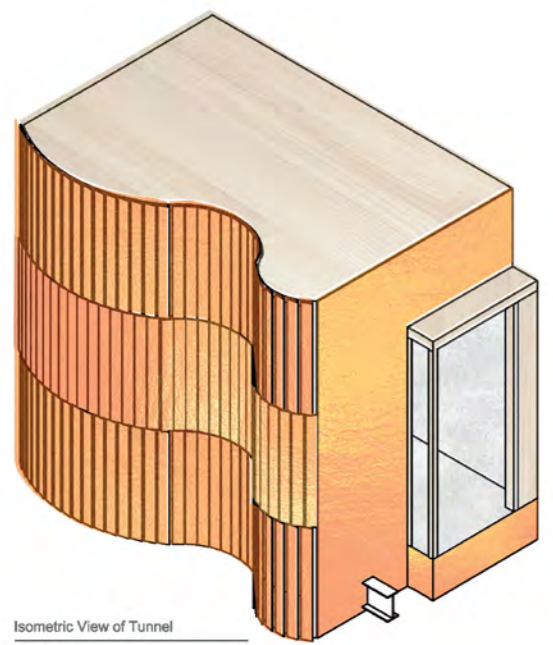
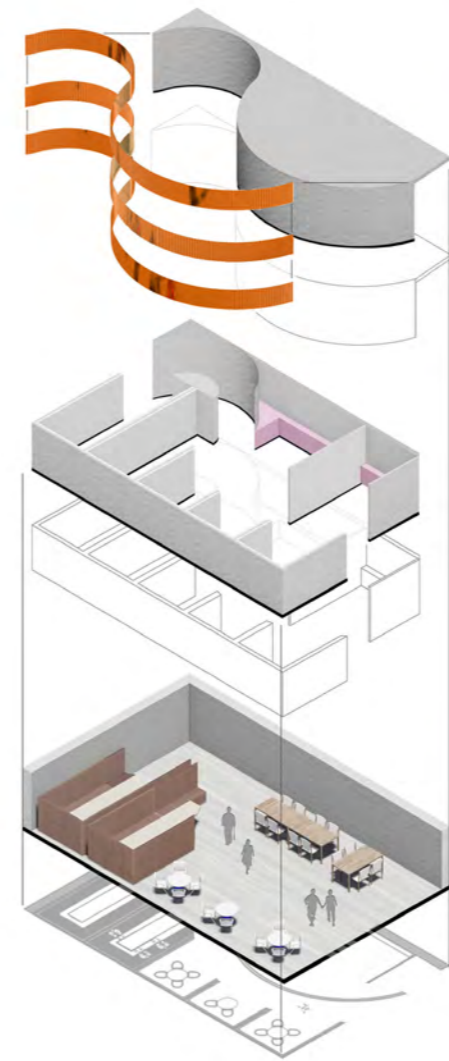
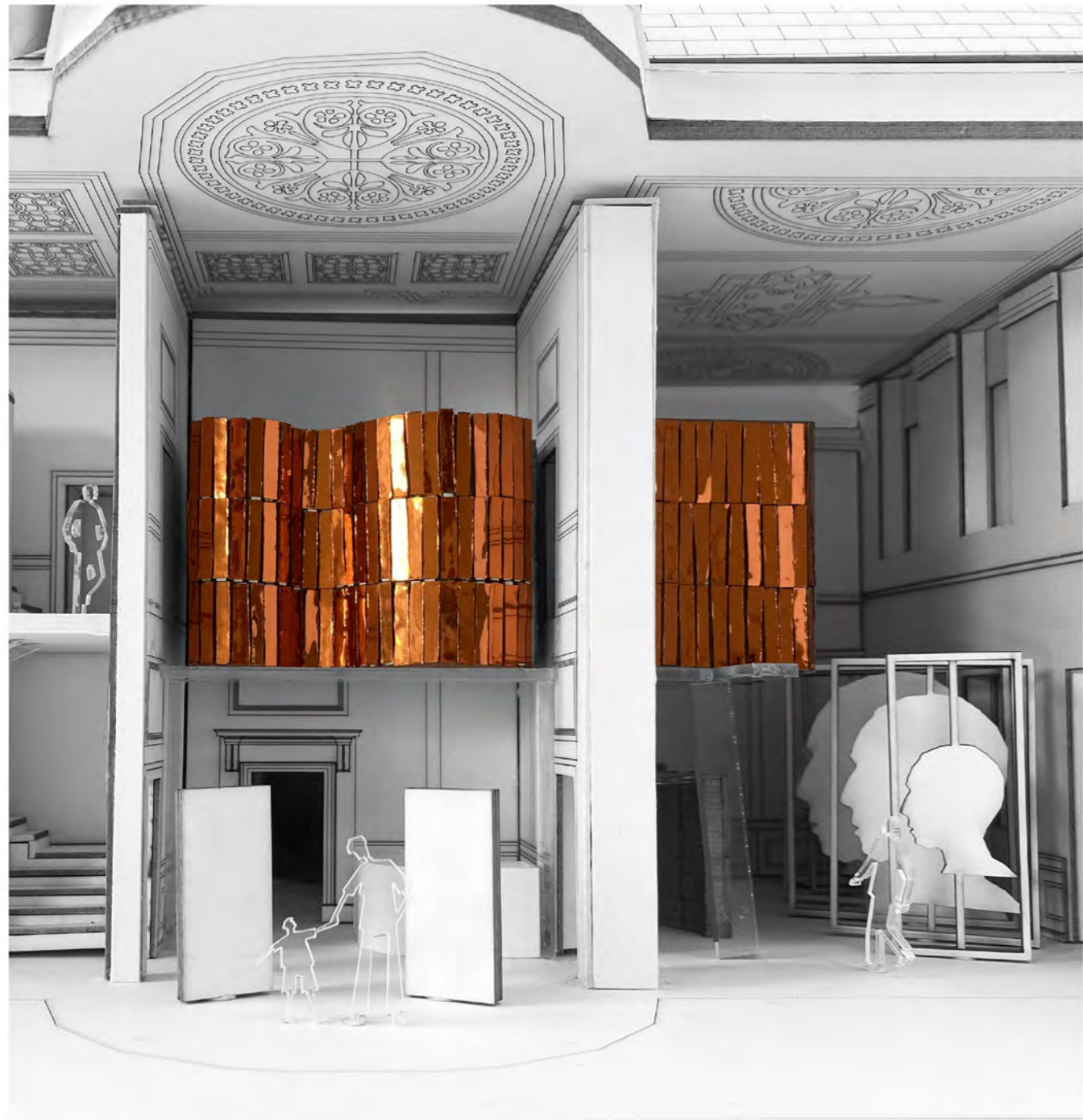
Key:

1. Consultation Room
2. Outdoor Cafe
3. Sheltered Outdoor Cafe
4. Acoustic Foam sheets fixed to ceiling
5. Projection Room / Sharing stories and informing visitors about the Condition
6. Storage
7. Stairs/ Lift
8. Interactive Movement and Light Room
9. Acoustically insulated walkway leading to Tranquil Bubble/ Viewing Area
10. Interactive Sound Booths
11. Aluminum Room/ Harsh Acoustics
12. Entrance/ Reception

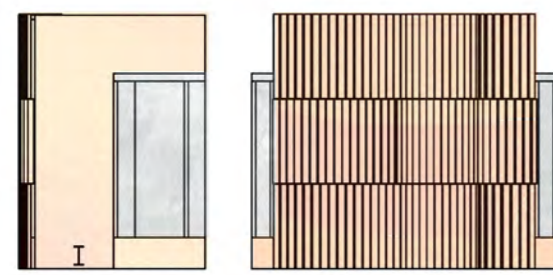


Scale 1 : 1000

Section A - A
Scale 1 : 100

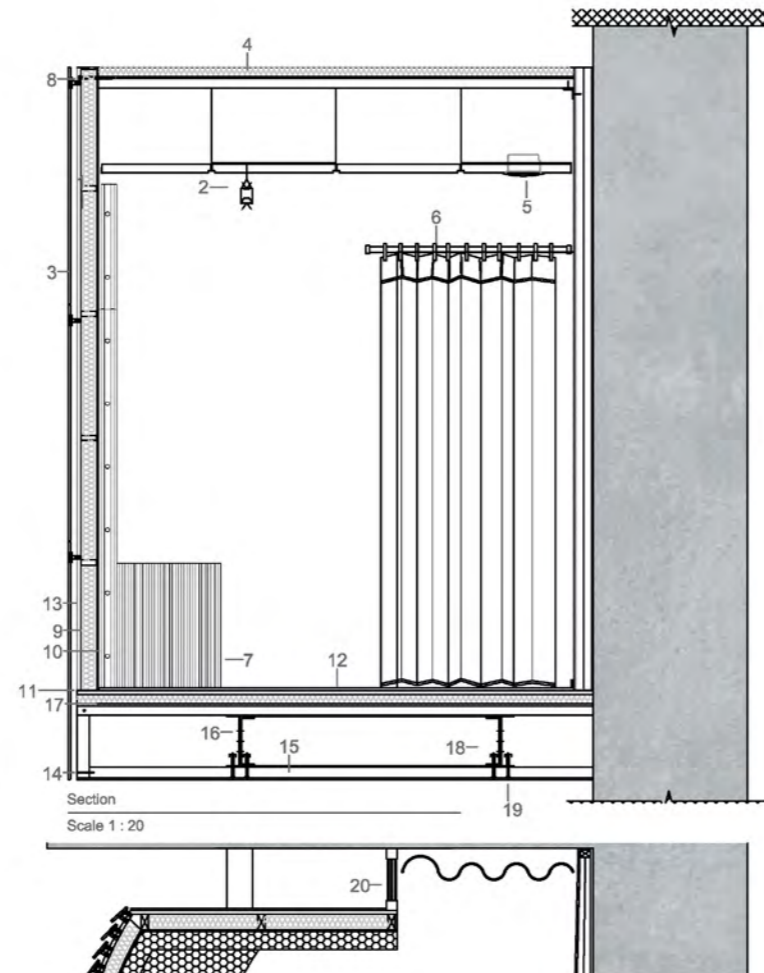


Isometric View of Tunnel
Not to Scale



Front Elevation of Tunnel
Not to Scale

Side Elevation of Tunnel
Not to Scale



Section
Scale 1 : 20

Plan
Scale 1 : 20

1. Modular ceiling with 24mm exposed t-grid with tegular acoustic tiles
2. LED indirect/ direct suspended luminaire
3. Mirrored coloured glass with silvering backing
4. 100mm Timber Joist with acoustic insulation
5. Recessed ceiling mounted speaker
6. Acoustic drape
7. Non-woven polyethylene seating with internal honeycomb structure and pleated surface to break up reflected sound and provide acoustic absorption
8. 15 x 150 mm countersunk wood screw
9. 75 mm Timber studs with acoustic insulation
10. 9mm Flexible Plywood
11. Acoustic mastic around perimeter of stud and exterior of 9mm flexible plywood
12. Rubber cork flooring
13. 18mm flexible plywood
14. 50 x 50 mm countersunk wood screw
15. 100mm Timber frame
16. 10mm Steel plate welded to beam using 3 No. M20 bolts
17. 100mm Timber Joist with acoustic insulation
18. Steel beam
19. 2 No. M10 bolts
20. Acoustic triple glazed window

