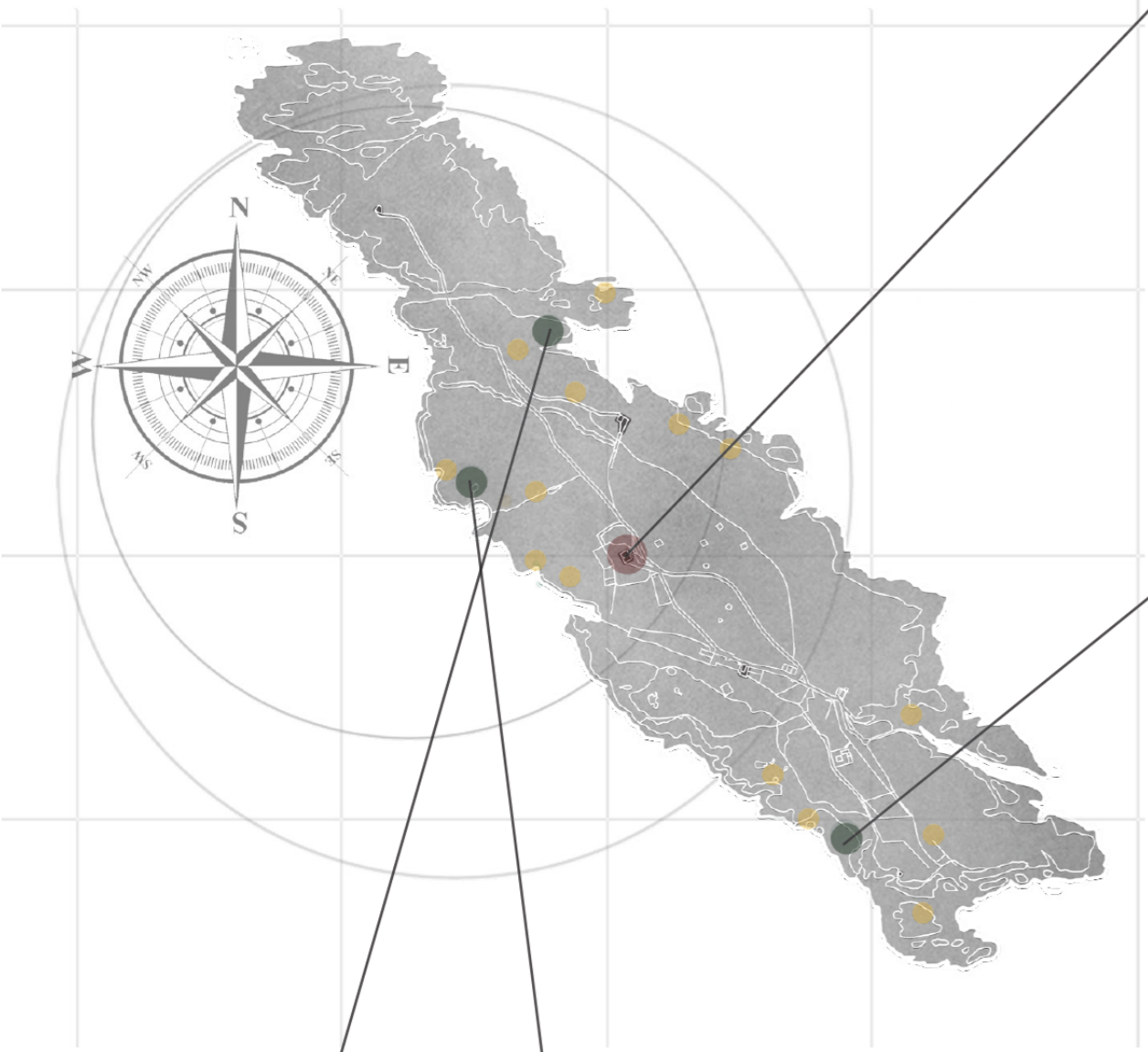


BEACON -

Social gathering point of the Island where visitors come together to eat, visit the shop and stargaze at night.



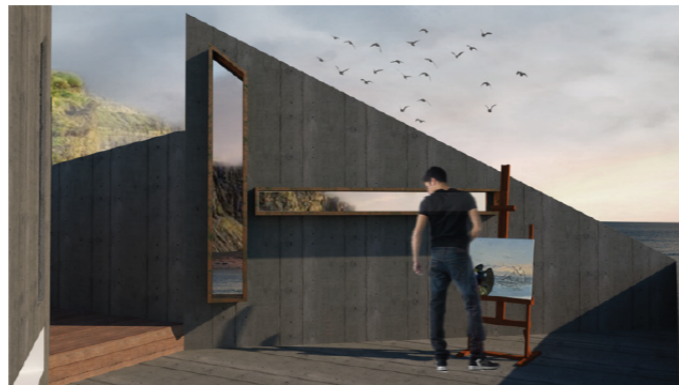
THE LIGHTHOUSE

Social Hub of Island, Eatery, Shop, Seating Space, Kitchen, Greenhouse and Stargazing platform



CREATIVE STUDIOS

Studios placed throughout the Island in order to catch different perspectives from sunrise to sunset and midnight stars. Here the user has freedom to be inspired and create, the senses alivened and highlighted through the design.

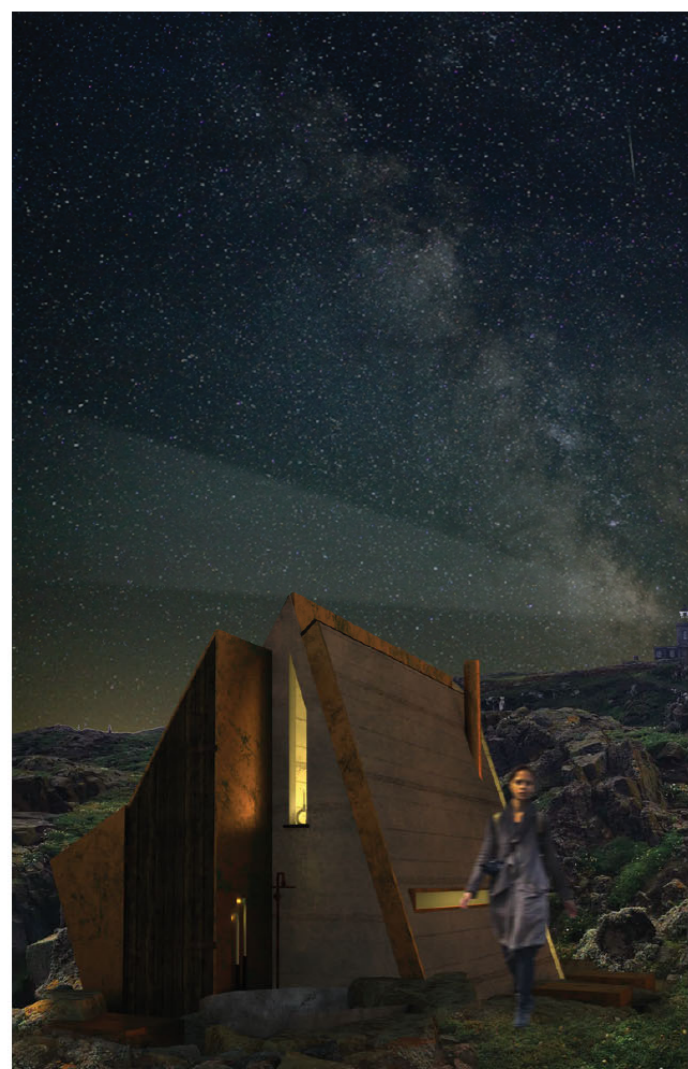
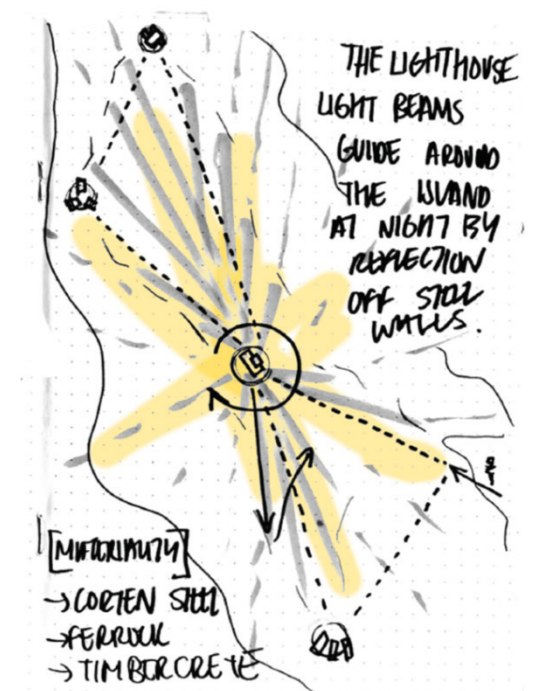
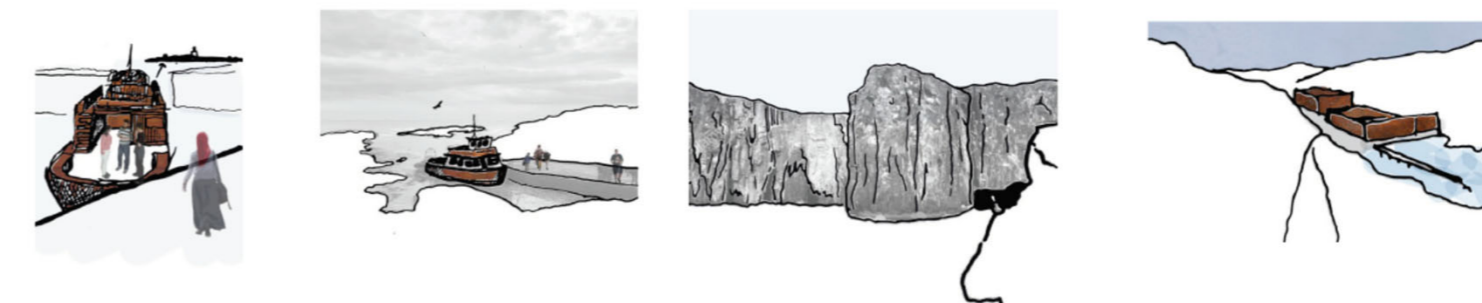


SLEEPING POD

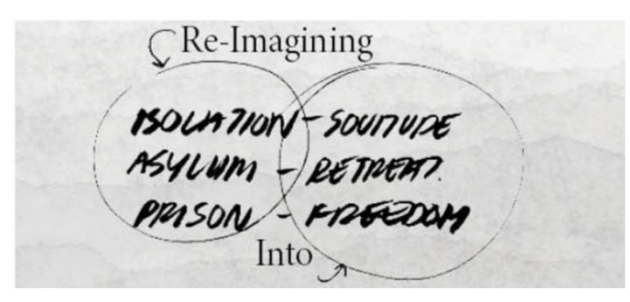
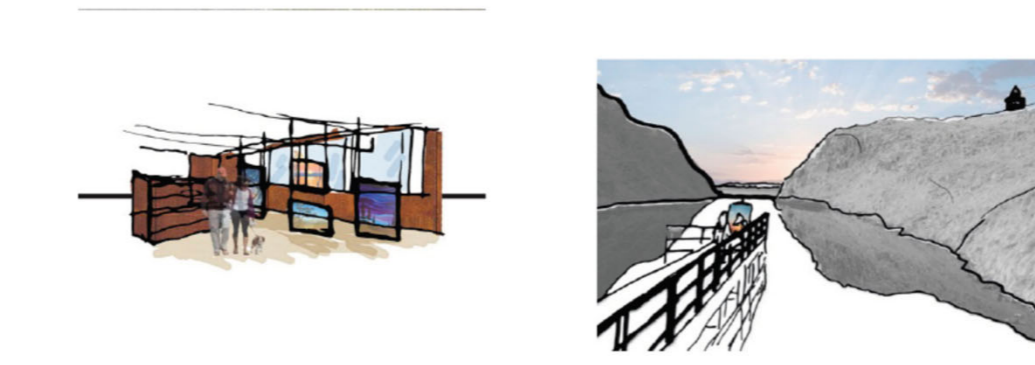
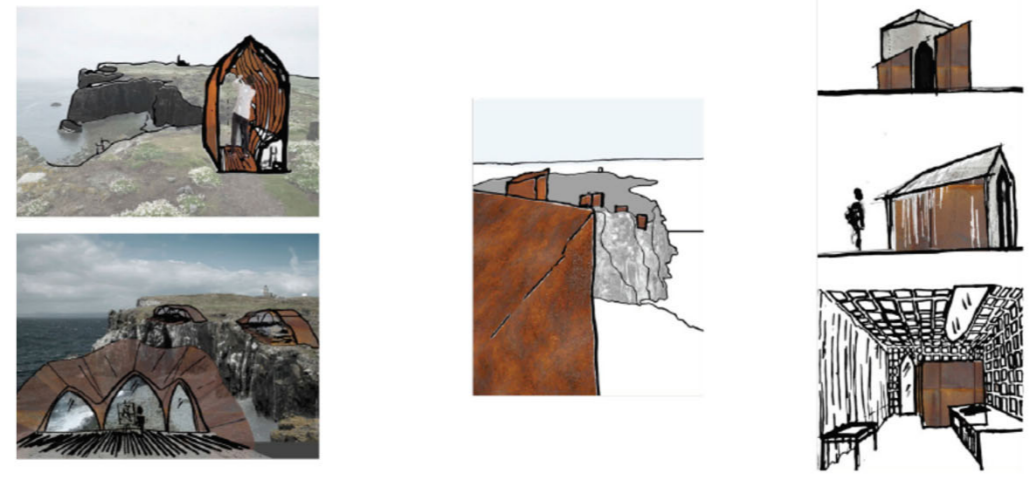
Various Simplistic Living sleeping pods designed along east of Island, a space to reflect with atmospheric lighting and view catching elements.

NATURE HIDEOUT

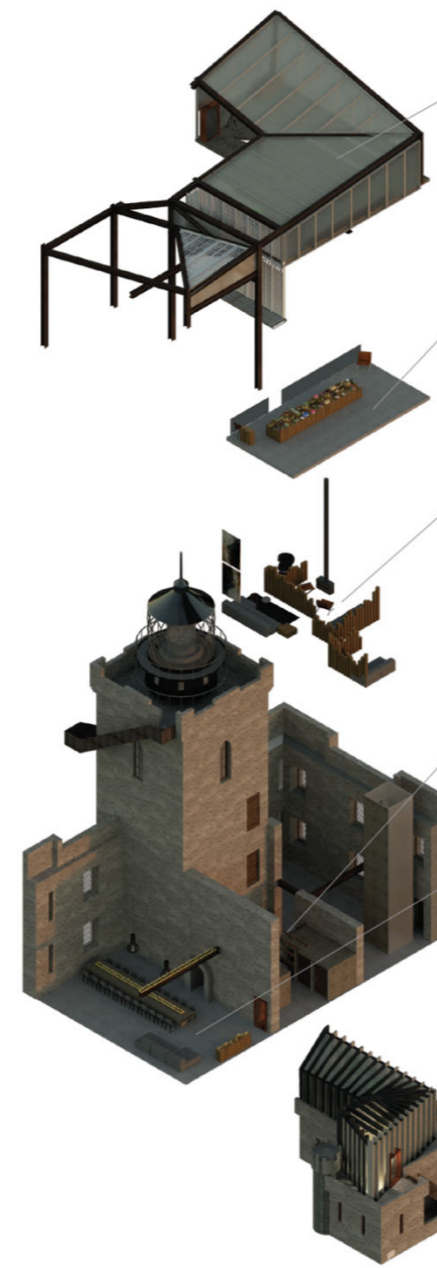
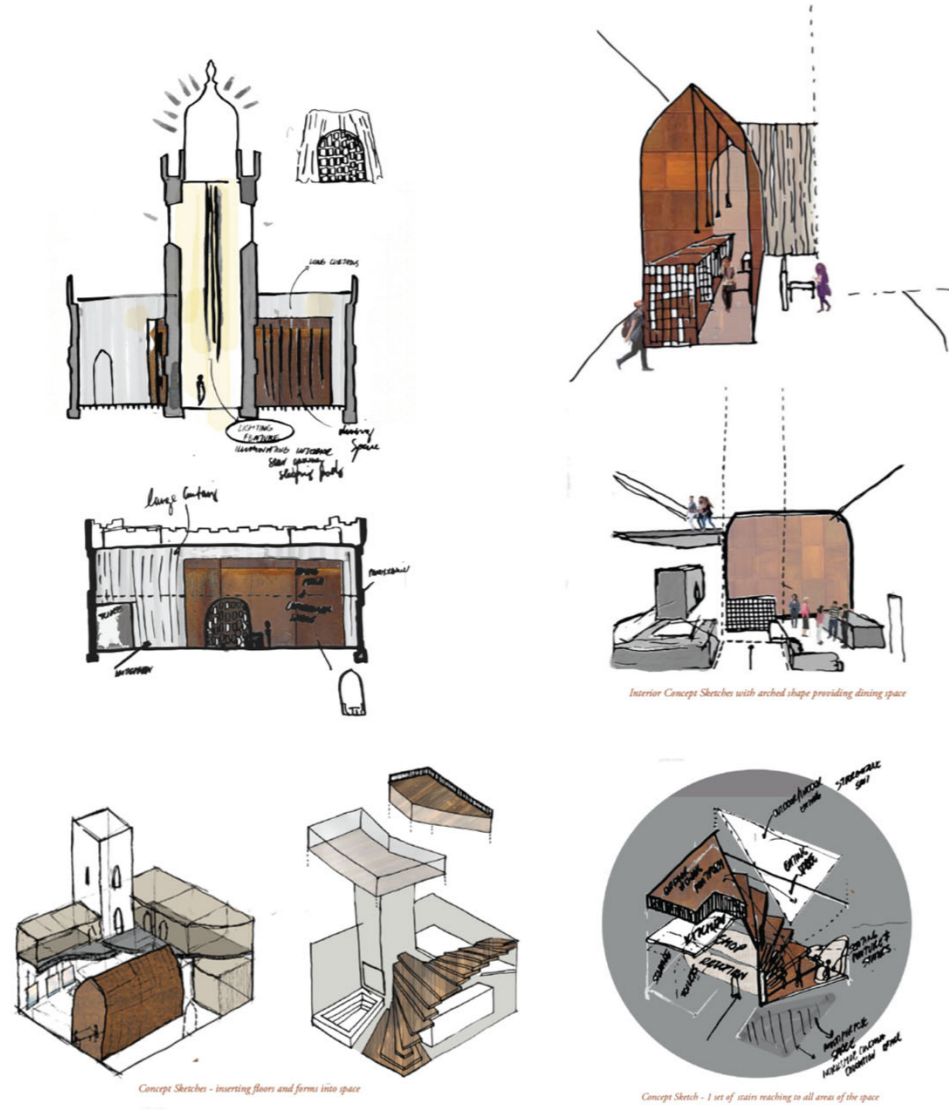
Solitary Nature pods designed to surround user with nature and retract from busy life. Focus placed on the birdwatching podium at the west of Island where sunsets can be contemplated and nature's course perceived.



→ a contemporary retreat from the hustle and bustle of the world is just what we need
 PRESSURE TO RETIRE - RETIREMENT.
 "the slowly been spending money, either by then a greater more contemplative life. something like being a monk."
 "I may not be a monk, but a temporary retreat from the everyday world of bustle may be just what I need."
 → the return of nature
 a removal from everyday life - as a personal yet from space
 RECONCILING THE URBAN CONCRETE WITH NATURE
 → TIME the gift of time restored
 BOOKS All the interest in the number of people reading books.
 → living for today's measure of something.
 HOW TO FIND THE RESPECTIVE TIME
 RECONCILING THE URBAN CONCRETE WITH NATURE



Beacon: The Social and Central Hub of the Island. A guide through the various spaces in the Lighthouse transformation.



Rooftop Lookout

A new Roof that allows expanses of light into the building, and a viewing platform for visitors. has been constructed. Detailed windows project beautiful light and shadows into the building. Visitors can access the rooftop at night to stargaze.

Art & Snack Shop

As the Retreat has guests to stay, an open plan convenience store with coffee and snacks is available on the second floor. The store also sells art supplies to cater to the creative therapy many partake in during their visit. Art created on the island is also displayed here and throughout the building.

Social/Private Seating

The seating space offers communal and private seating areas where visitors can sit and share their experiences of that day or contemplate alone. The tall wooden and glass poles add awe to the viewer and resemble the height and grandness found in Monastic buildings. The curves contrast the original structure of the building and create flow.

Reception

The reception is purposely simple to allow visitors a peaceful entry into the site. Users can find a help desk and map of the various spaces on the island. The toilets for the building are behind the reception.

Eatery

The Eatery is the focal point of the building where visitors meet together to share food and society. Here a simple long table is constructed to seat 40 people, and the wooden light feature attached to the roof creates depth to space through light and shadows. This space encourages the individual to take time and care for their health.

Kitchen & Greenhouse

The original lookout section of the Lighthouse has been converted into the kitchen area due to its separation from the main space allowing food to be prepared then brought straight into the Eatery.

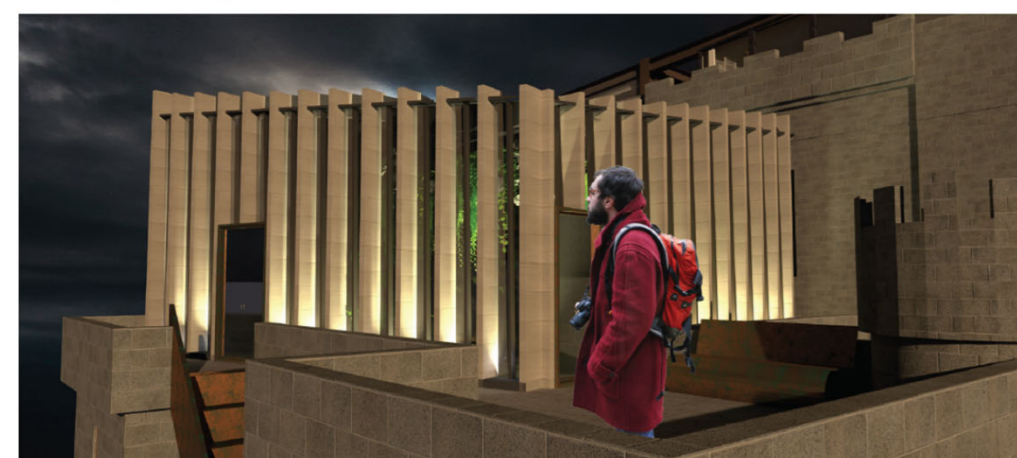
A new stairway and greenhouse have been constructed on top of the kitchen roof with access for staff and visitors. Growing herbs and plants was a big part of Monastic life, and this area replicates this.



Reception and Greeting Area of Site where guests arrive and are led around the Retreat



Visual of Shop selling art supplies and snacks



Greenhouse Visual



Visual Exiting the lift and Looking at the stars



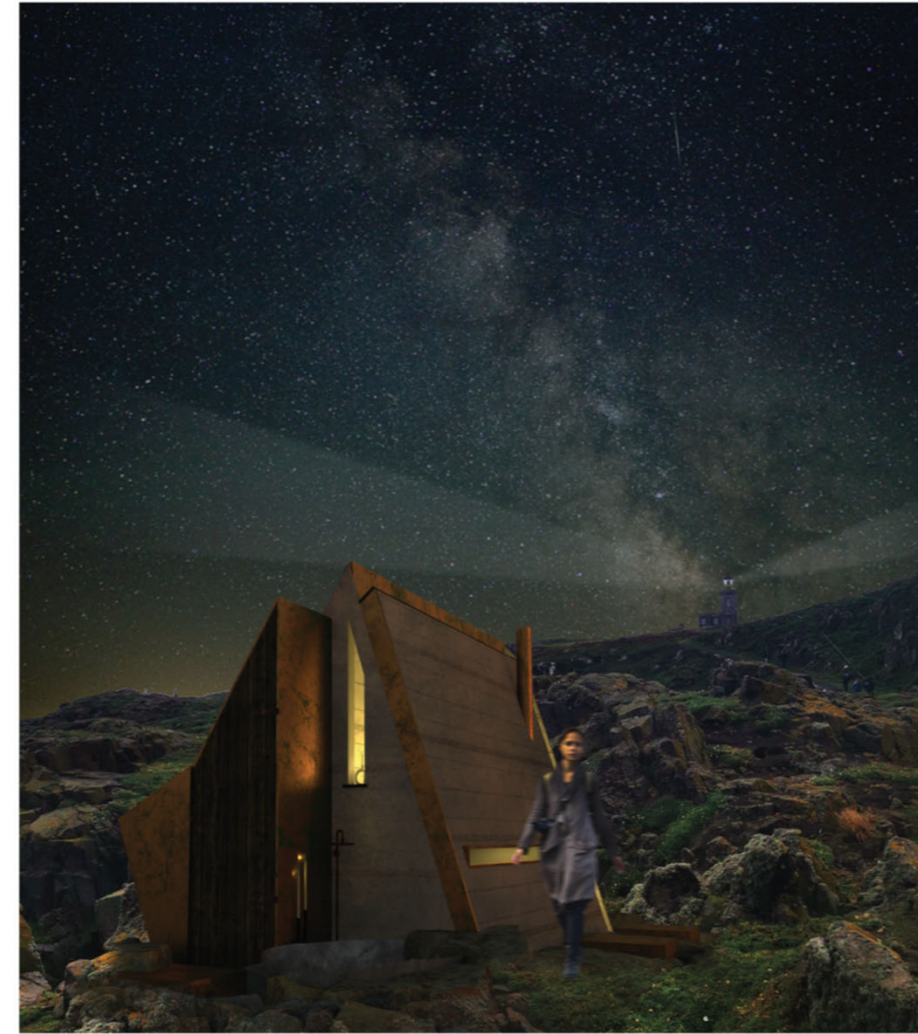
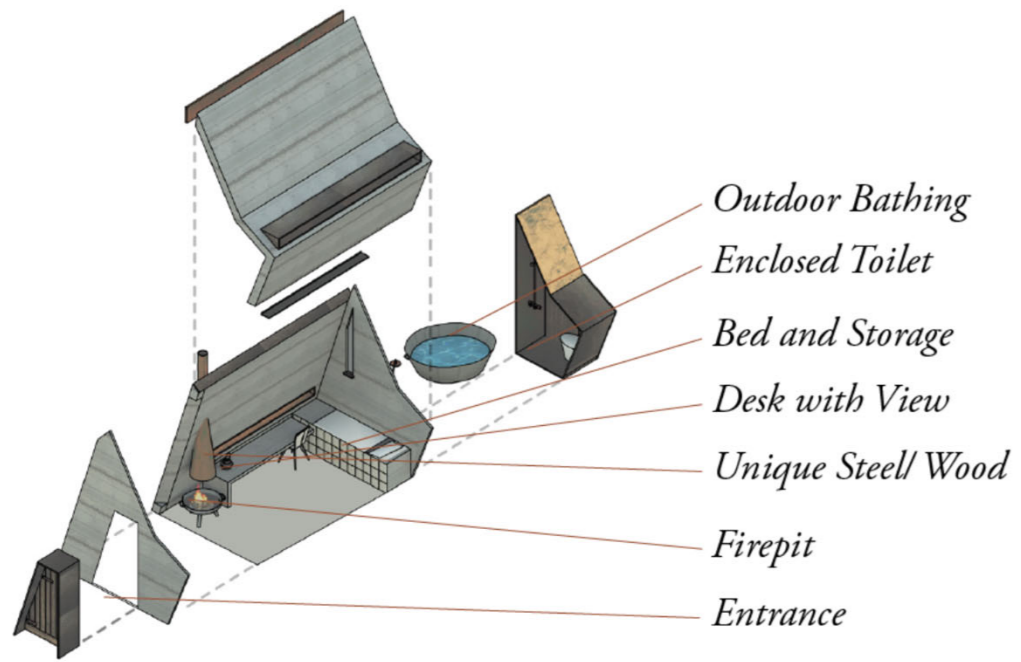
View of Rooftop Stara-gazing Pod with open windows, seating and stairs up to the top of the Lighthouse



1:200 Short Section

SLEEPING POD

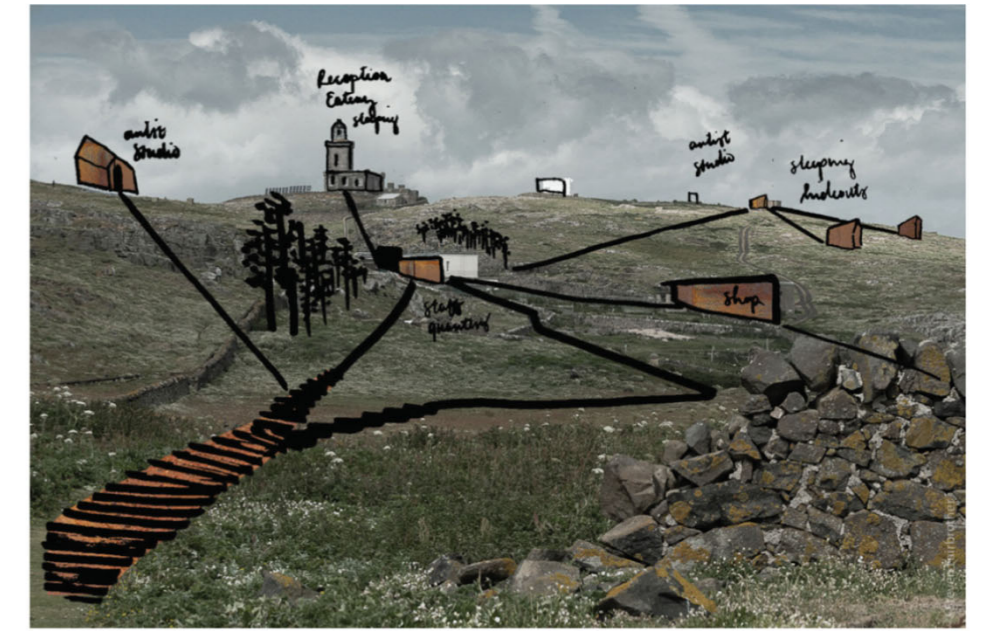
Various Simplistic Living sleeping pods designed along the east of the Island, a space to reflect with atmospheric lighting and view catching elements.



Visual of sleeping pod at night with lighthouse in background



Visual of sleeping pods dotted along island



Concept Sketch of Various Studios and Design Interventions throughout the Island



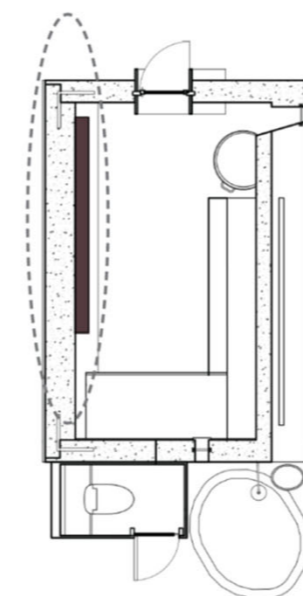
Concept Sketch of Yoga Studios and Solitary pods flowing off Island



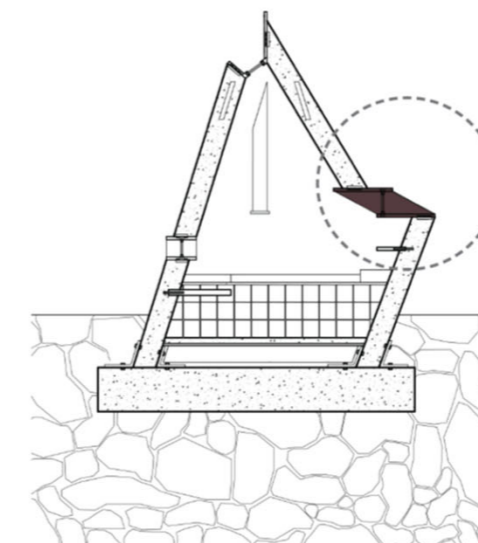
Interior visual of hut with view of unique window frame and desk area

SLEEPING POD DETAIL DESIGN

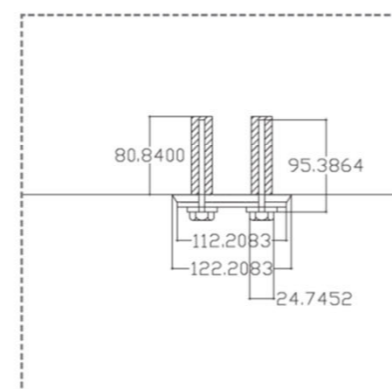
Detail of Sleeping Hut exploring the design and construction of unique window pane consisting of hidden bolts, Hidden triple glaze glass joint, wooden construction elements, corten steel veneers, solar pannel lighting and ferrock (concrete substitute) wall construction.



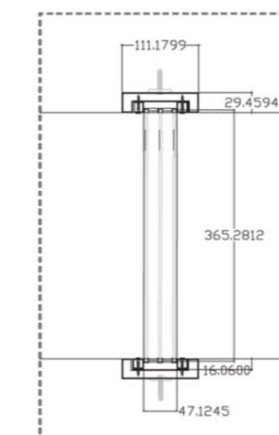
Plan @ 1:200 - Highlighting the Hidden Window Pane



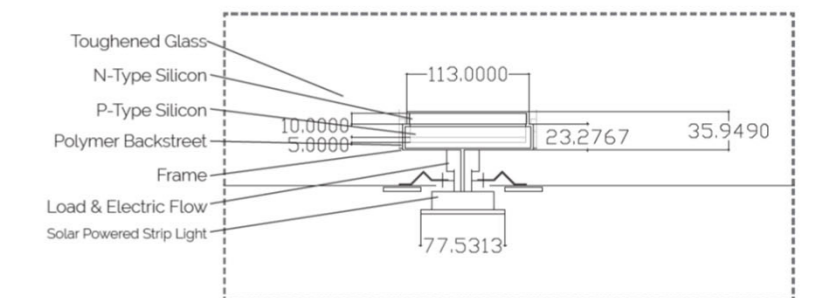
Short Section @ 1:200 - Highlighting the Hidden Window Pane



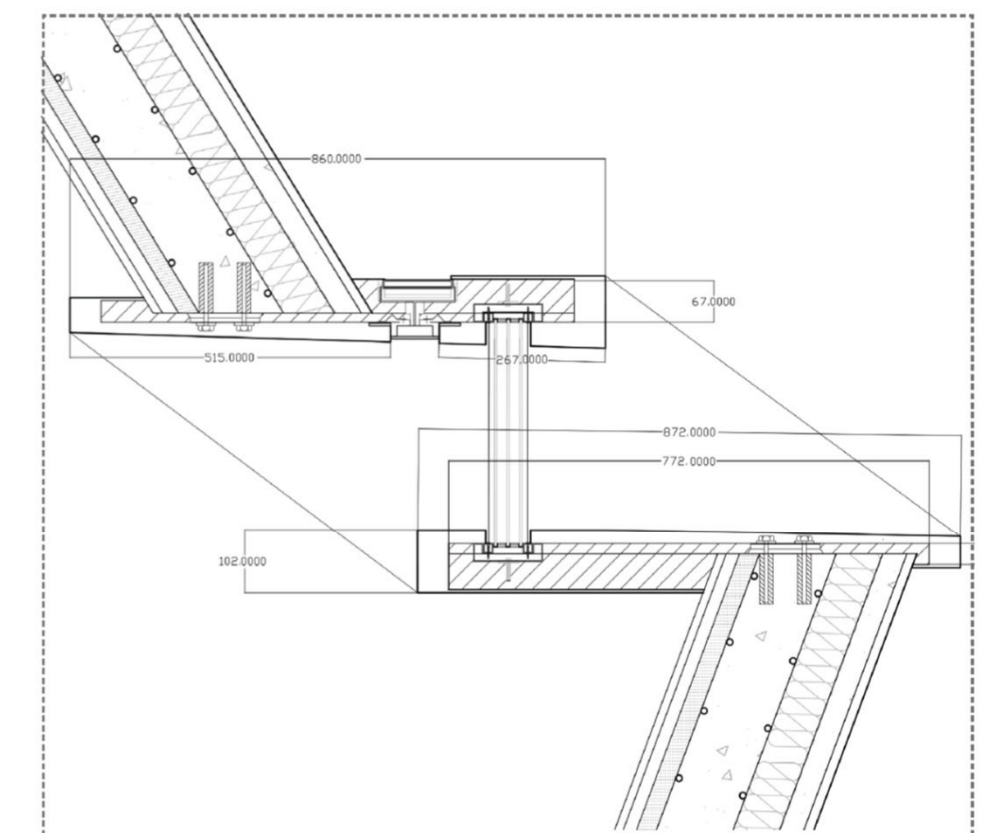
Detail @ 1:2 showing main structural bolt connecting Wooden Framework of Window Pane to Concrete with industrial wall plug and anchors and nails



Detail Section @ 1:5 Displaying Triple Glaze Window Dimensions



Detail Section @ 1:2 displaying dimensions of Solar Pannel



1:10 Section Displaying Overall Lengths and Thickness

NATURE HIDEOUT

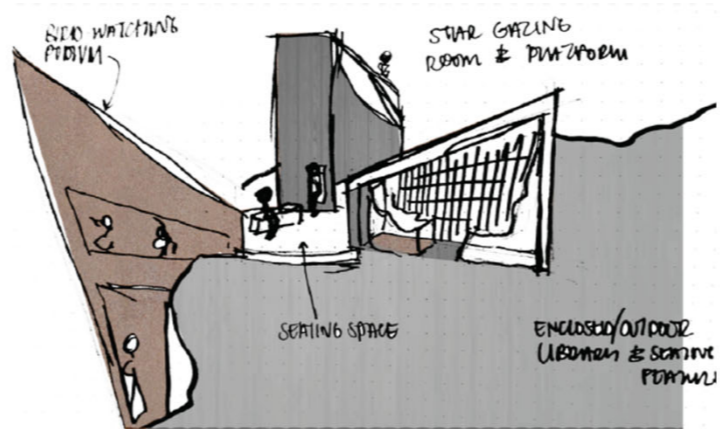
Solitary Nature pods designed to surround the user with nature and retract from busy life. Focus placed on the birdwatching podium at the west of the Island, where sunsets are viewed, and nature's course perceived.



View from wheelchair access entrance

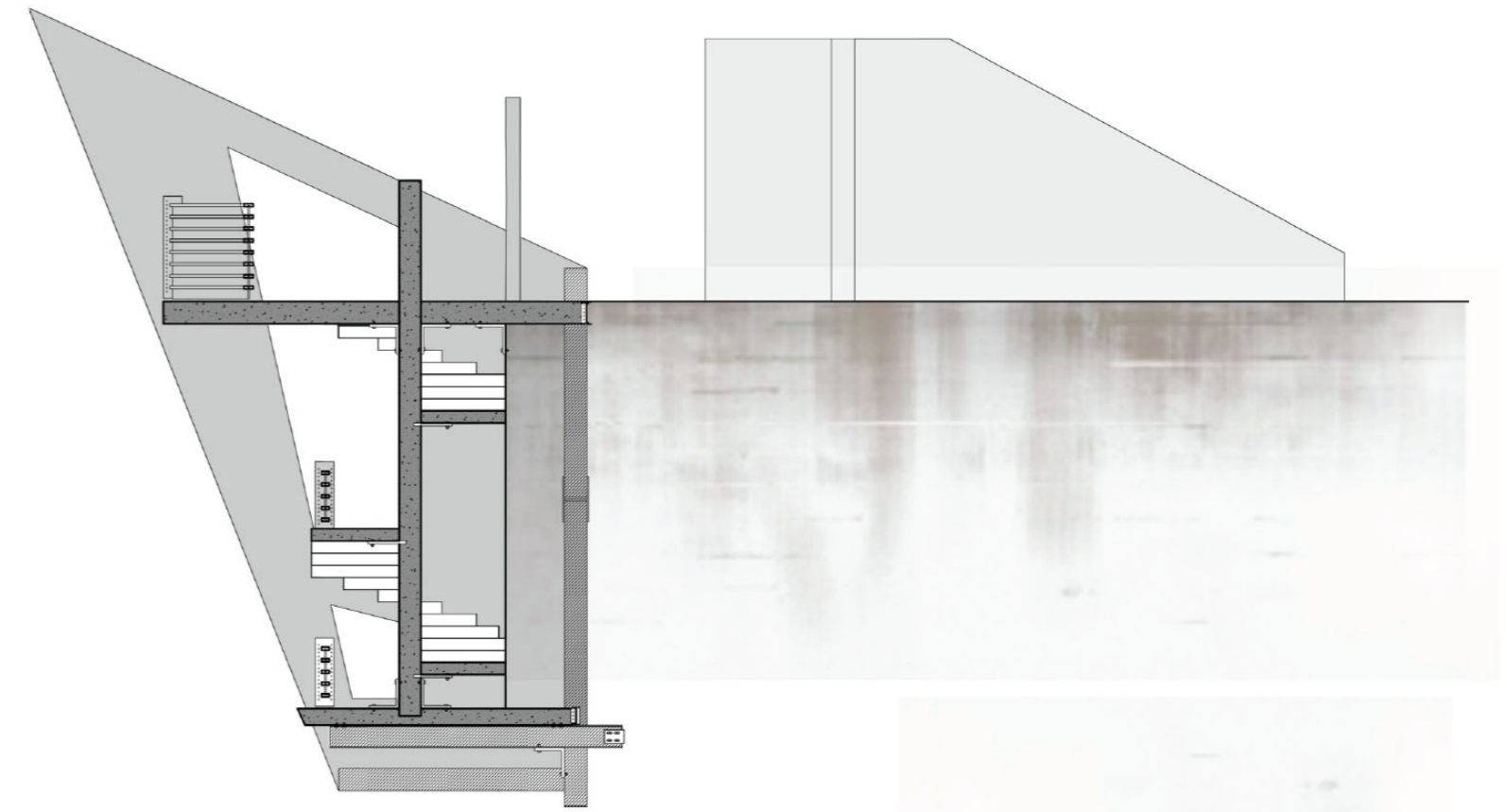


User Experience within the Nature retreats

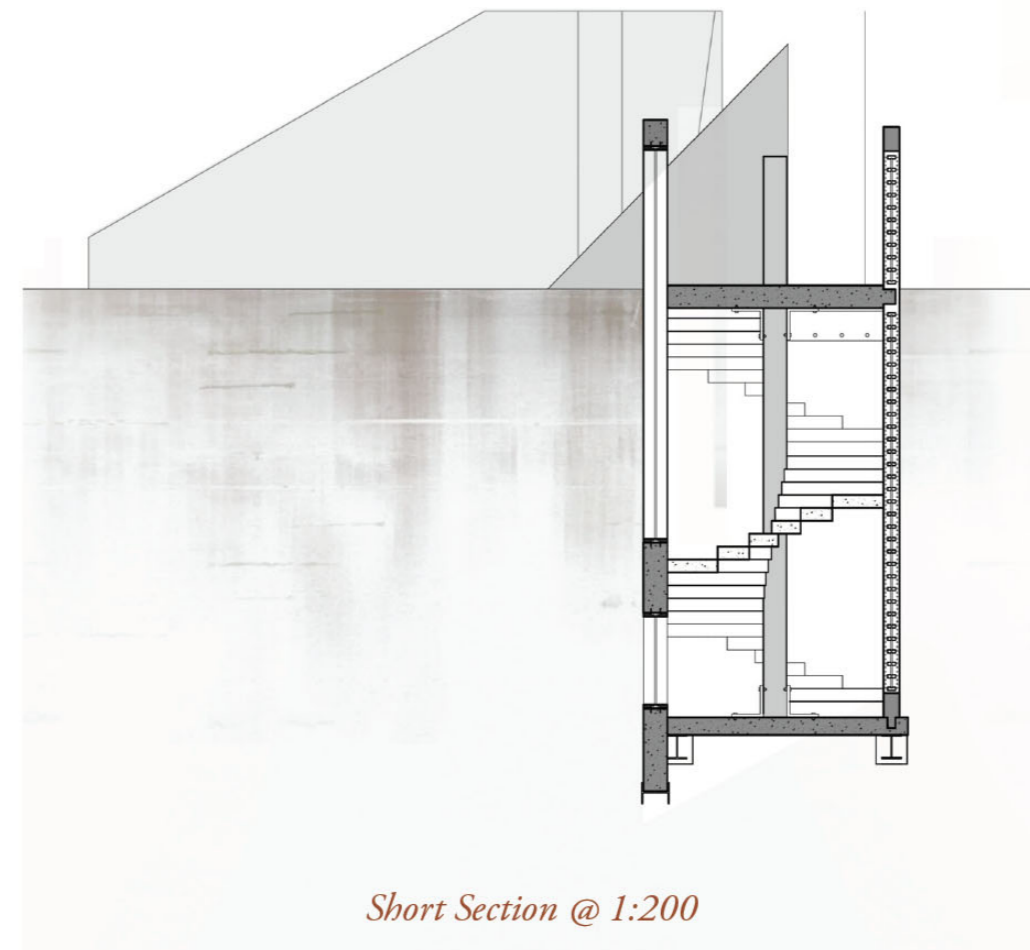


User Experience within the Nature retreats

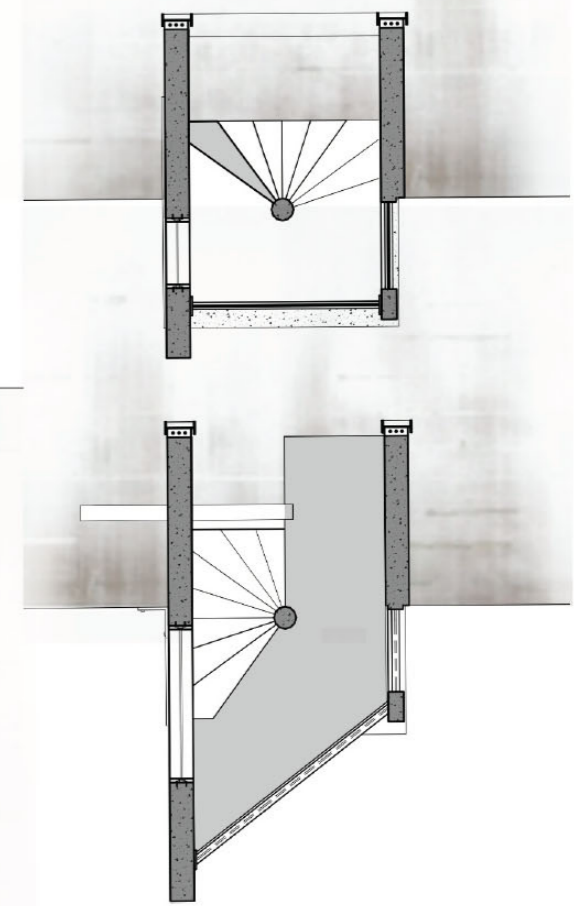
BIRDWATCHING PLATFORM AND NATURE RETREAT DEVELOPMENT



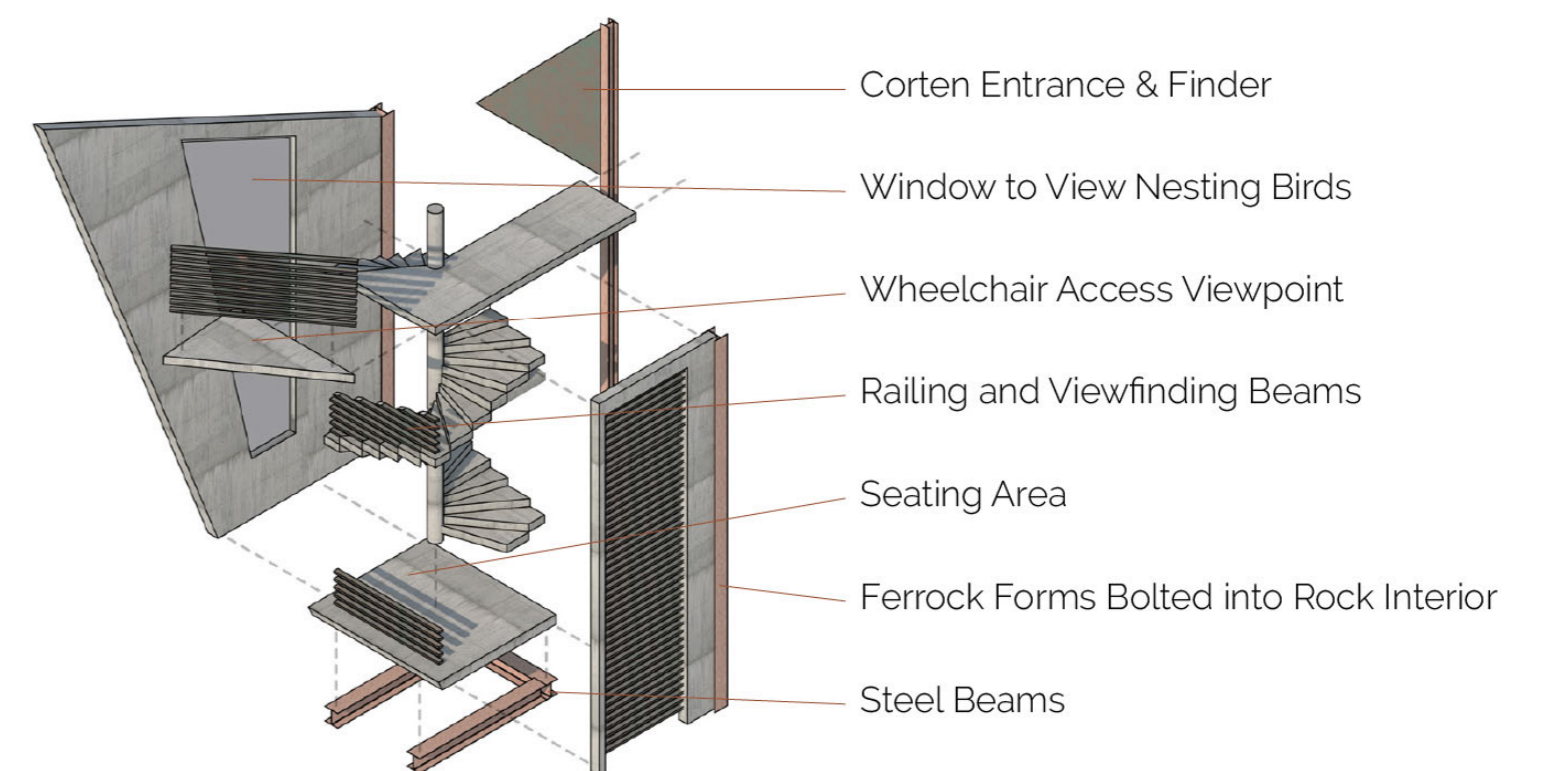
Long Section @ 1:200



Short Section @ 1:200

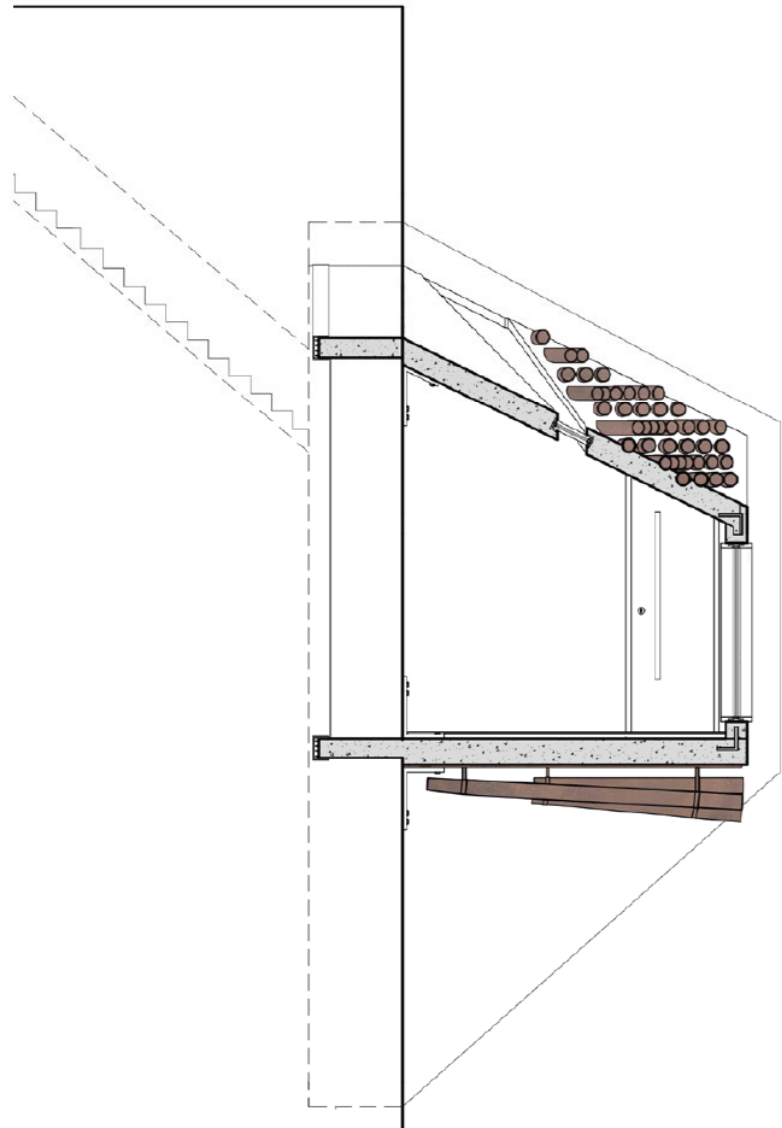


Plans @ 1:200

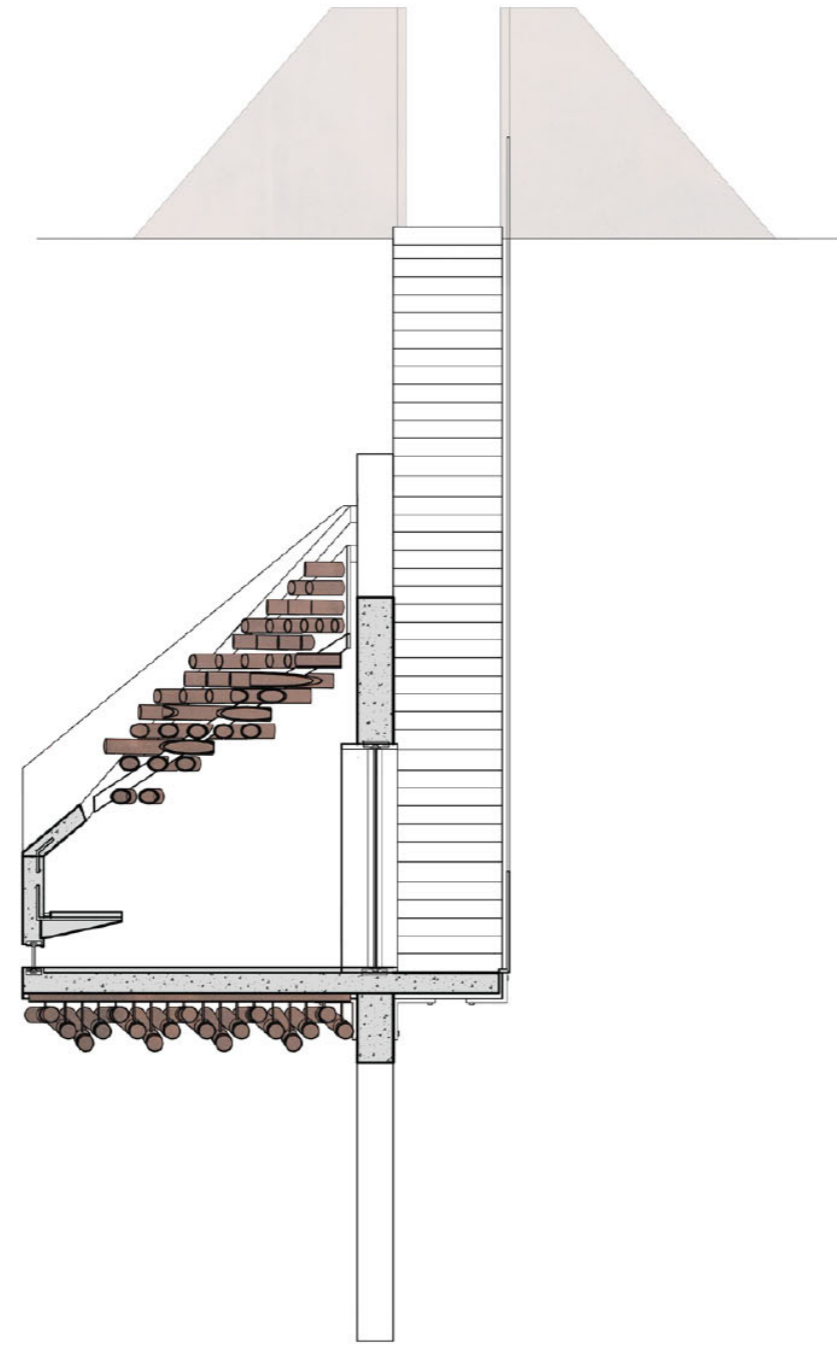


CREATIVE STUDIOS

Studios were placed throughout the Island to catch perspectives and inspire from sunrise to sunset and midnight stars. Here the senses are livened and highlighted through design.



Short Section @ 1:200



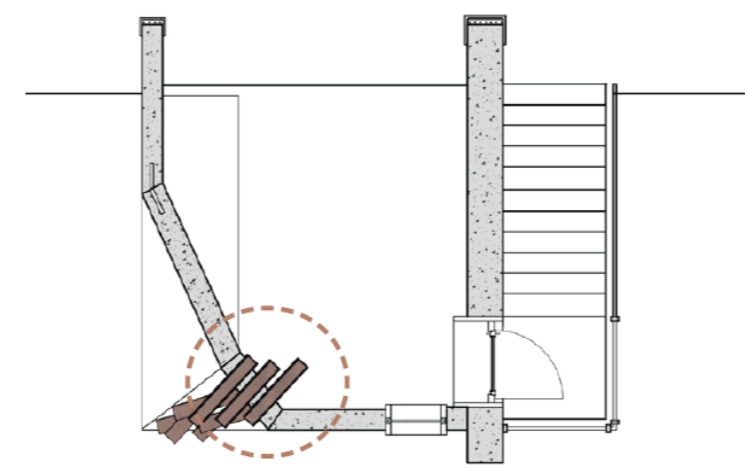
Long Section @ 1:200



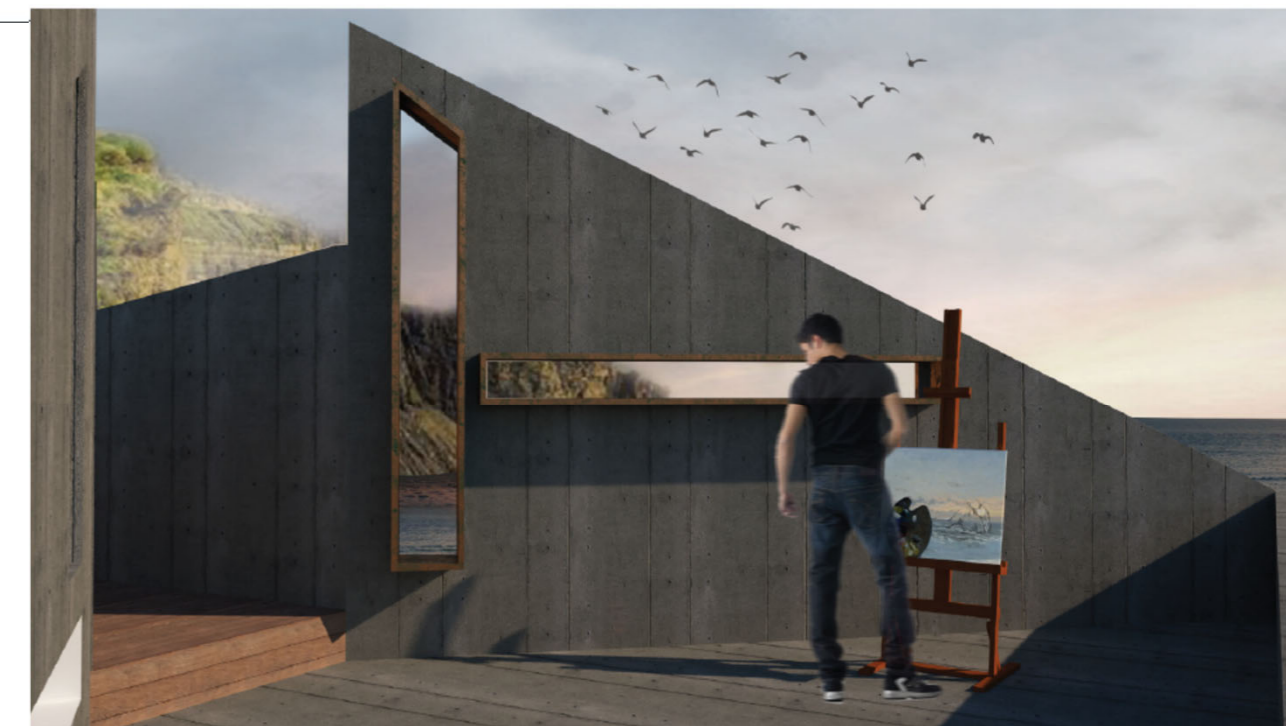
Exterior visuals of studio in site



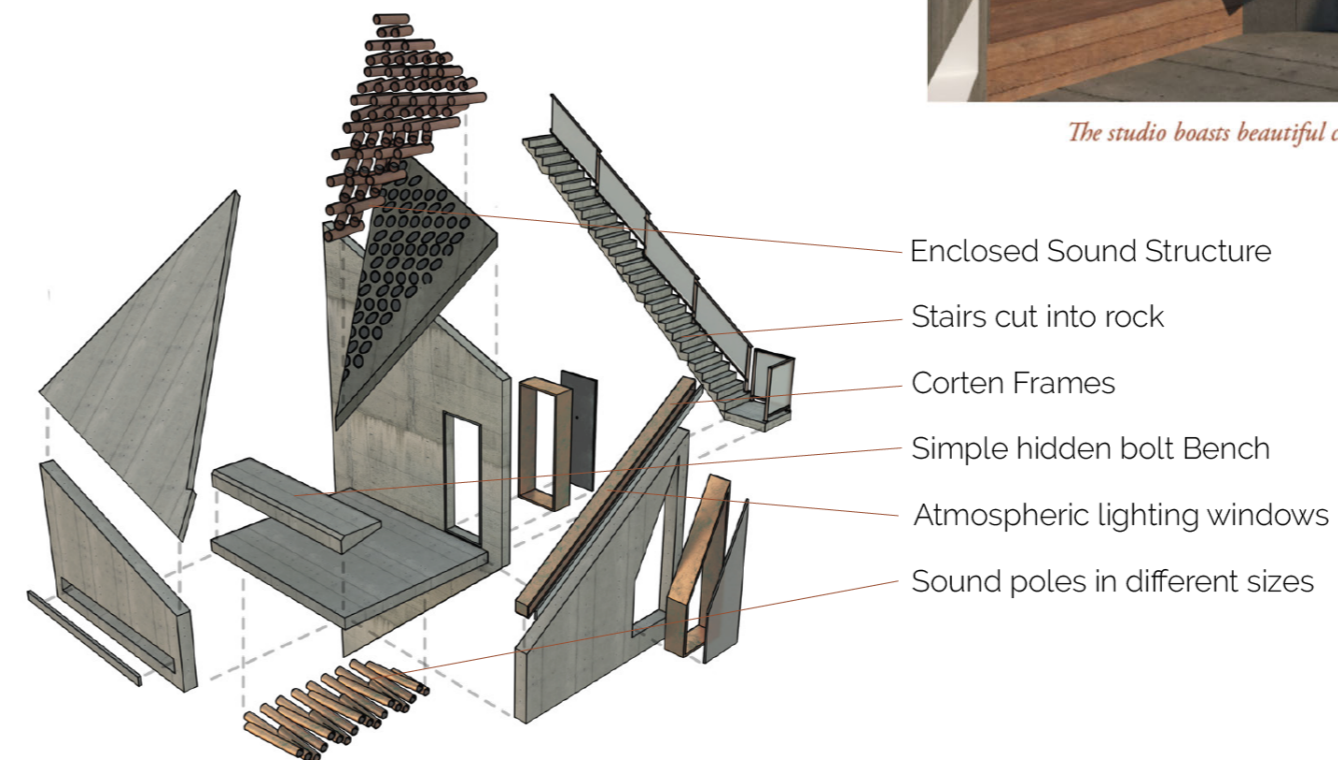
Interior visual, user experiencing sound and views within studio



Plan @ 1:200



The studio boasts beautiful scenery of the cliffs and landscape of the Island as well as the sea and land



Sketch idea of Studio design facing along beachside

Link to Project Video

<https://www.napierdegreeshow.co.uk/interior-spatial-design/rebecca-wright>