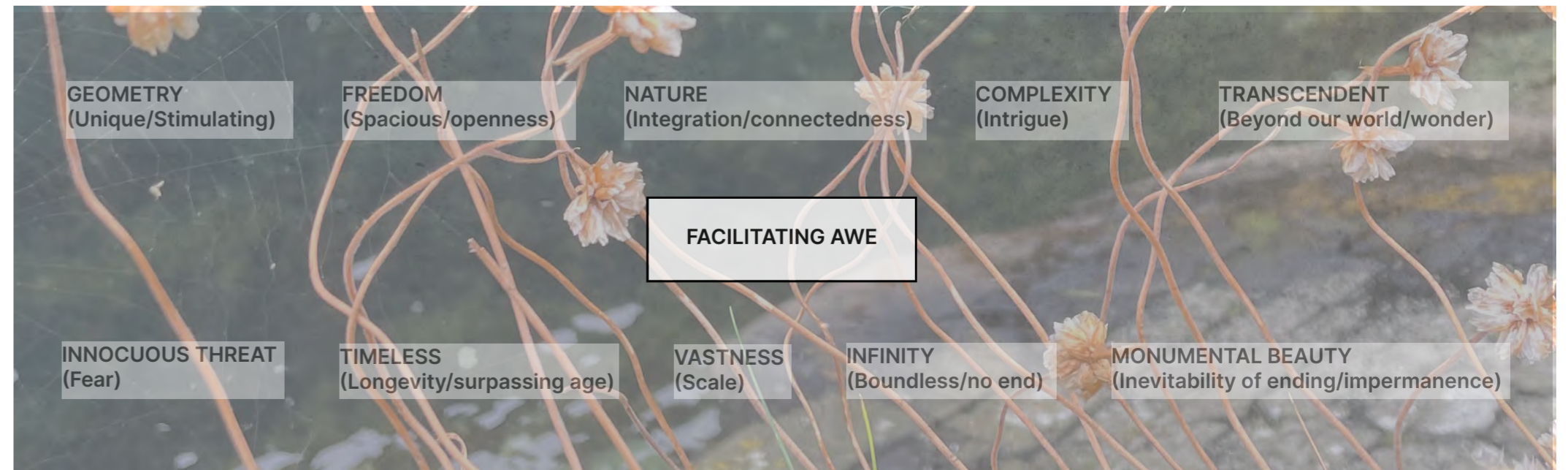
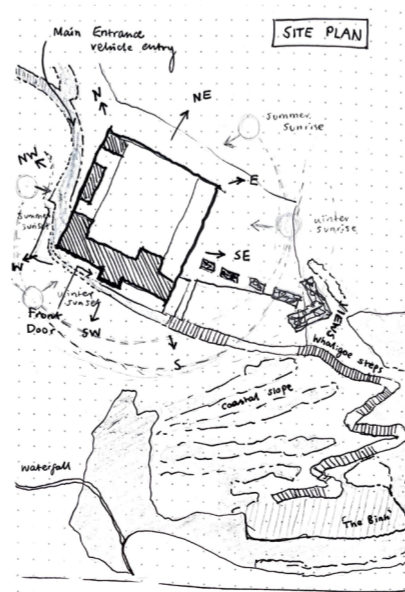
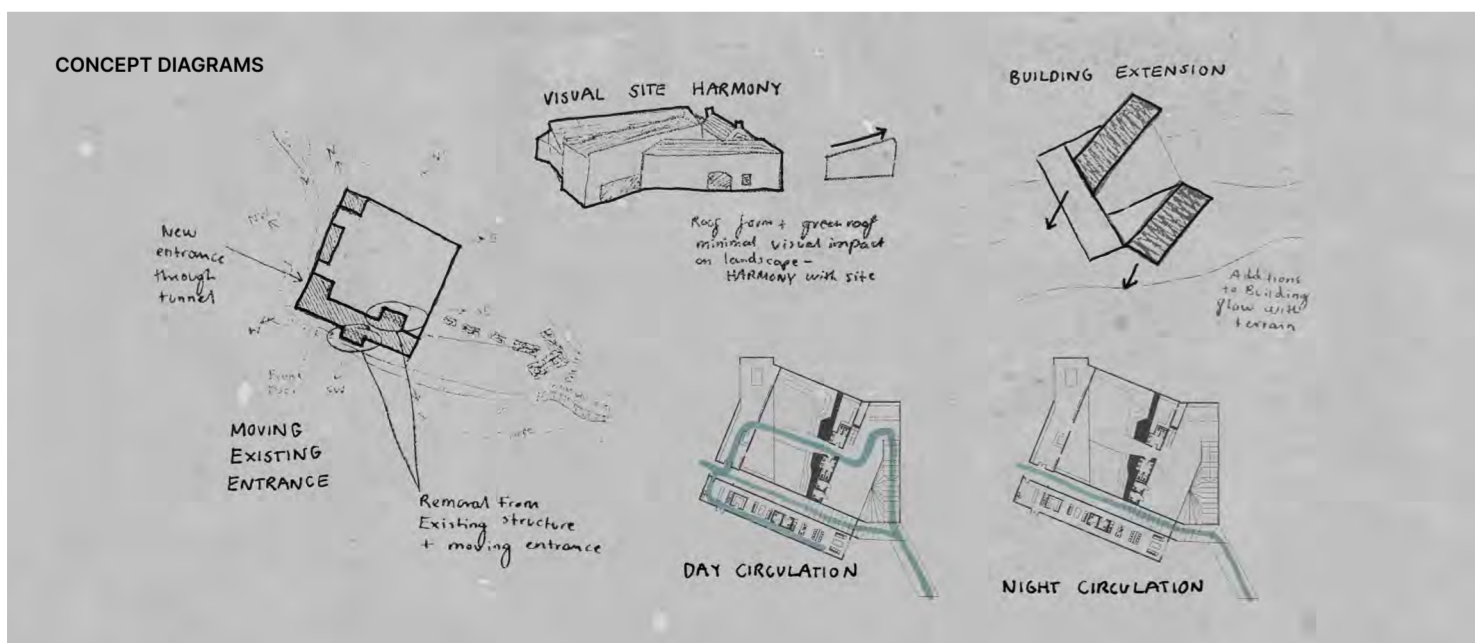
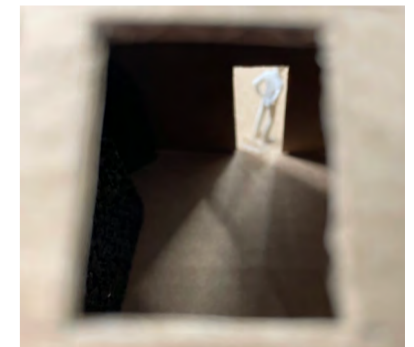
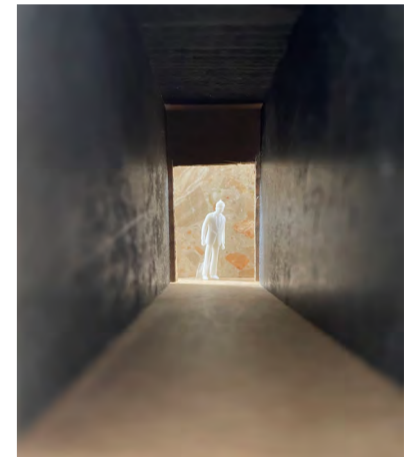
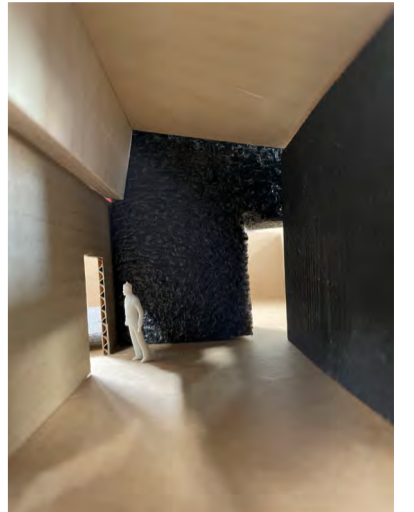
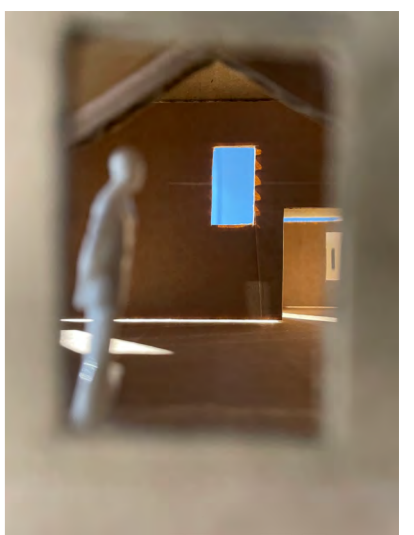
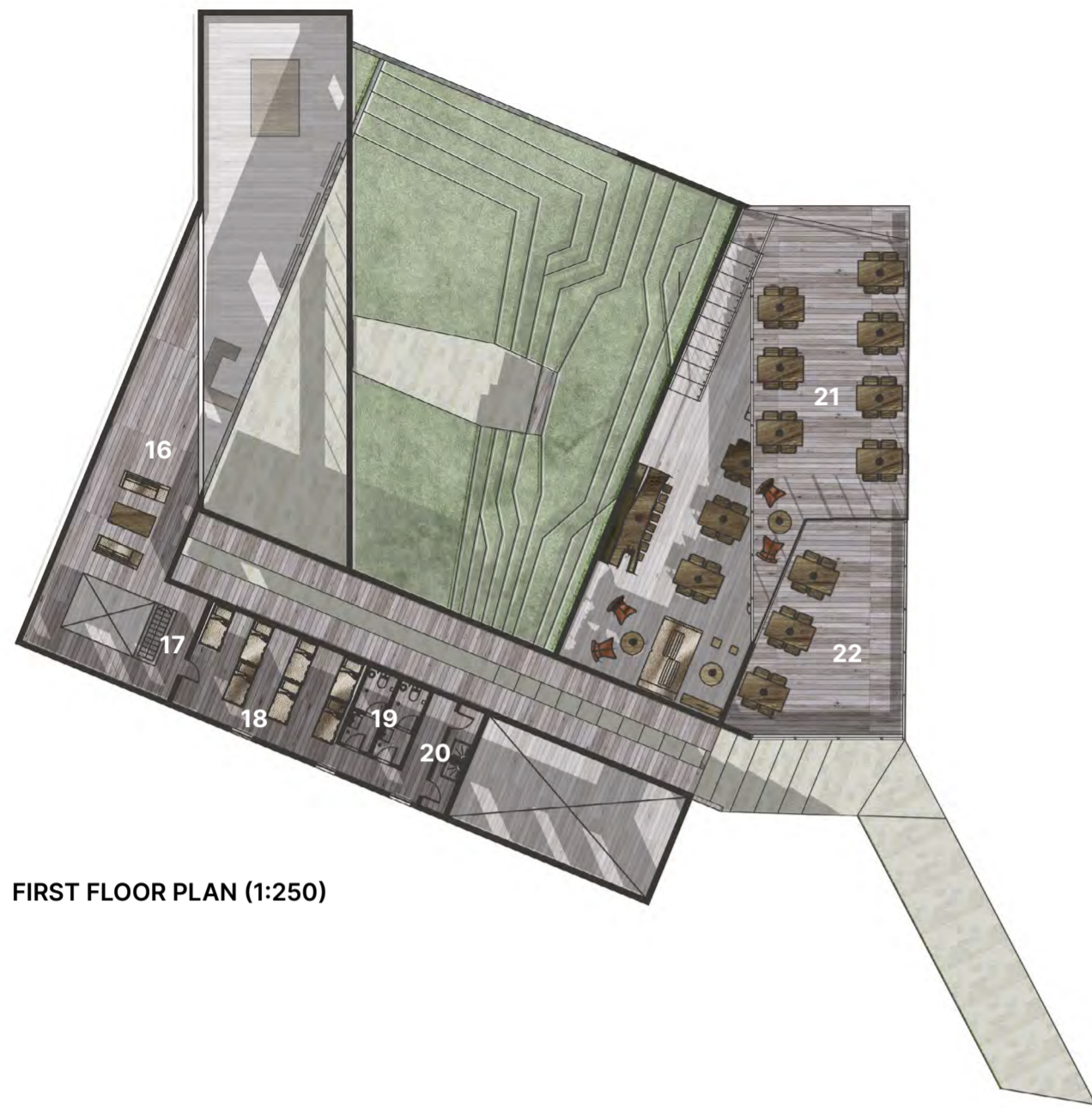


'Rapt In Awe' is an immersive visitor experience for Whaligoe Steps, Lybster - a marked viewpoint along the NC500 - that aims to take visitors on an awe-inspiring journey through the remote rural site. The scheme comprises a visitor centre and hostel, featuring a cantilever waterfall walkway and suspended viewing platform. An exploration into how design can harness the power and benefits of awe. Through incorporating elements of natural beauty, infinity, vastness, innocuous threat and transcendence, this project aims to create a transformative experience that inspires visitors to see the world in a new light...to return rapt in awe.

WHALIGOE VISITOR EXPERIENCE RAPT IN AWE





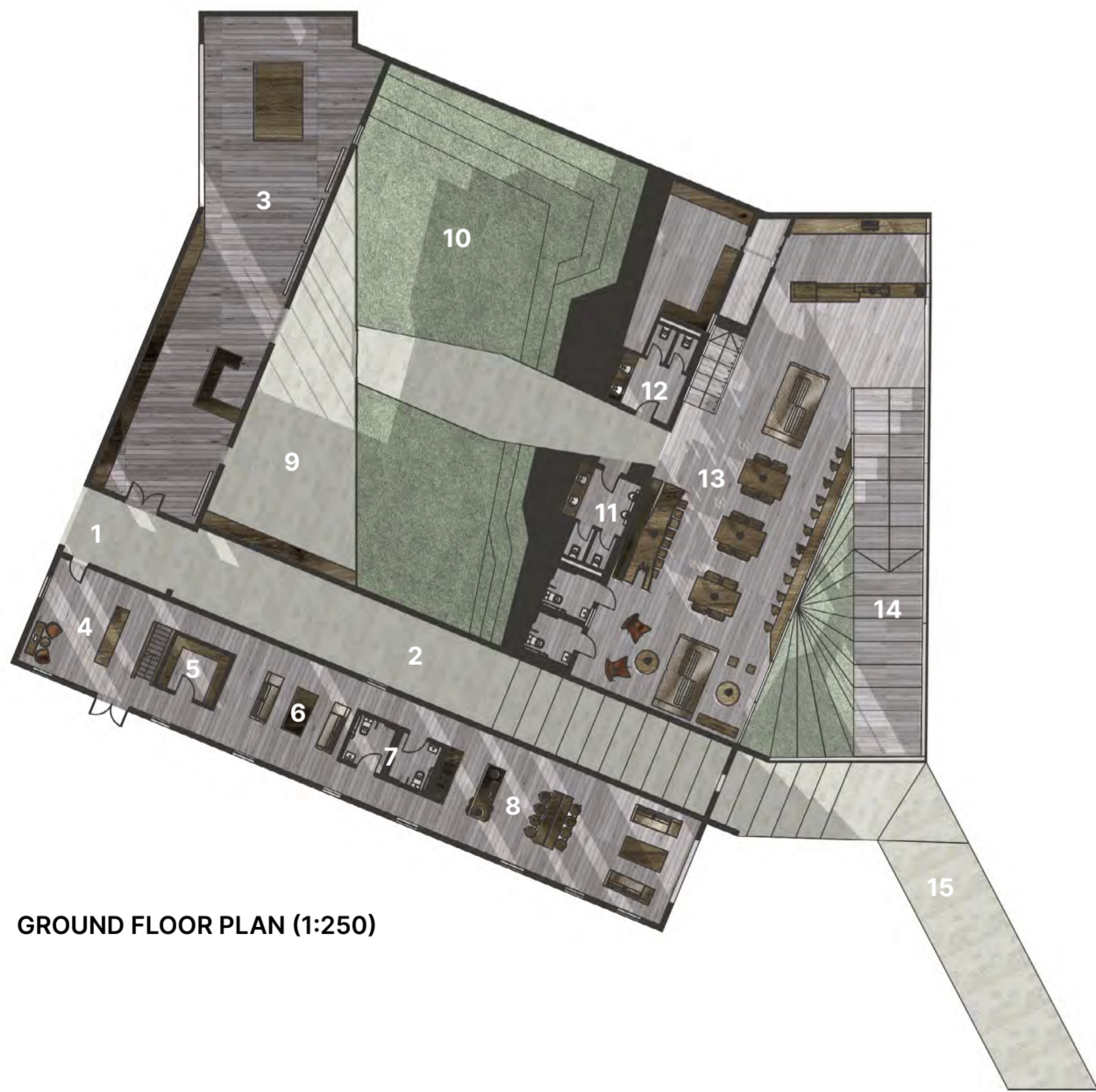
FIRST FLOOR PLAN (1:250)



Lower Level Cafe



Open Grass Tiered Courtyard



GROUND FLOOR PLAN (1:250)



Site Photo Capturing Whaligoe Harbour



Location Model

- | | | | |
|------------------------------------|----------------------------|-----------------------------------|--------------------------|
| 1. Main Entrance | 7. Disabled WC | 13. Cafe | 18. Hostel Bunk Room |
| 2. Infinity Corridor (24/7 access) | 8. Communal Kitchen/Dining | 14. Stairs down outside | 19. WC |
| 3. Visitor Centre | 9. Interior Courtyard | 15. Access down to Whaligoe Steps | 20. Showers |
| 4. Hostel Reception | 10. Green Tiered Courtyard | 16. Social Lounge | 21. Upper cafe mezzanine |
| 5. Kit/Gear Storage Room | 11. Male WC | 17. Landing | 22. Outdoor Terrace |
| 6. Lounge/ Social Space | 12. Female WC | | |

FUTURE POSSIBILITIES OF AWE-INDUCING DESIGN

Designing with the intention to evoke awe is crucial for improving human wellbeing, as it has been scientifically proven to promote positive emotions such as connectedness, gratitude, and positivity. Moreover, the experience of awe can boost the immune system and encourage individuals to act in ways that benefit society and the environment, making it a vital emotion for promoting sustainability and social responsibility.

Research has revealed that the exposure to awe is most advantageous during times of stress or difficulty, as it can offer individuals a sense of perspective and help them reframe their challenges in a positive manner. However, even in everyday life, experiencing awe can stimulate creativity, enhance mental wellbeing, and provide a stronger sense of purpose and meaning.

To harness the power of awe in the future, it is imperative to persist in designing environments and encounters that foster this emotion. By incorporating elements of natural beauty, vastness, innocuous threat and transcendence into our built environments, we can create transformative experiences that inspire visitors to see the world in a new light.



VISITOR CENTRE

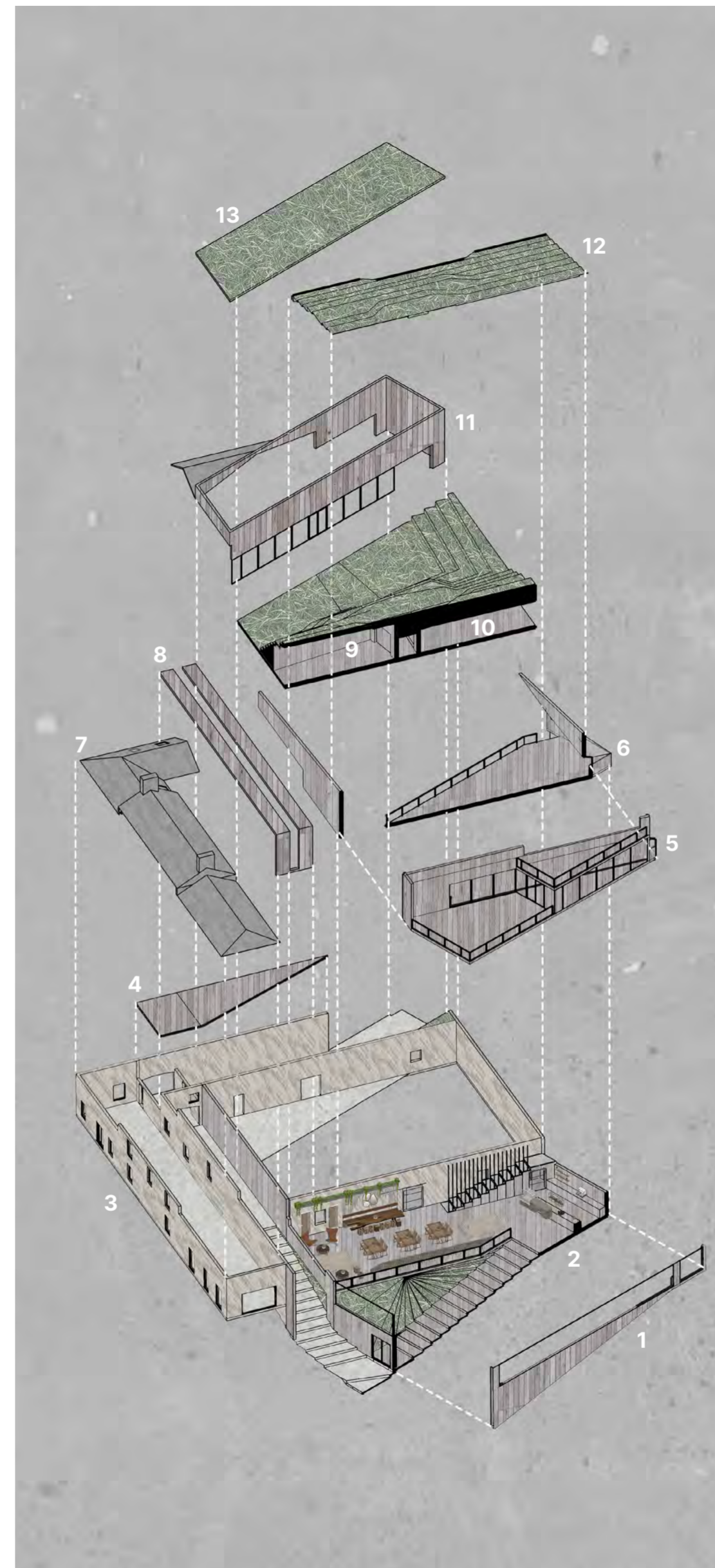
The main building, formerly known as "The Square," now serves as the visitor center, cafe, and hostel. It features several viewing terraces offering panoramic views of the sea, creating a strong connection between the building and the surrounding landscape.

CANTILEVER WATERFALL WALKWAY

A suspended mesh viewing platform, curving along the rockface and ending just before a hidden waterfall, offers visitors a breathtaking experience. As the walkway ends, visitors are left standing mid-air, completely immersed in awe. The see-through mesh of the platform creates an innocuous threat, exposing visitors to the surrounding environment and leading to a heightened sense of wonder and reverence.

SUSPENDED VIEWING PLATFORM

Upon reaching the bottom of the Whaligoe Steps, visitors can take a moment to absorb their surroundings by sitting on the platform located on the edge of 'the blink', which extends over the sea. The built-in benches with netted seats allow visitors to sit with their legs outstretched, overlooking the vast sea below.

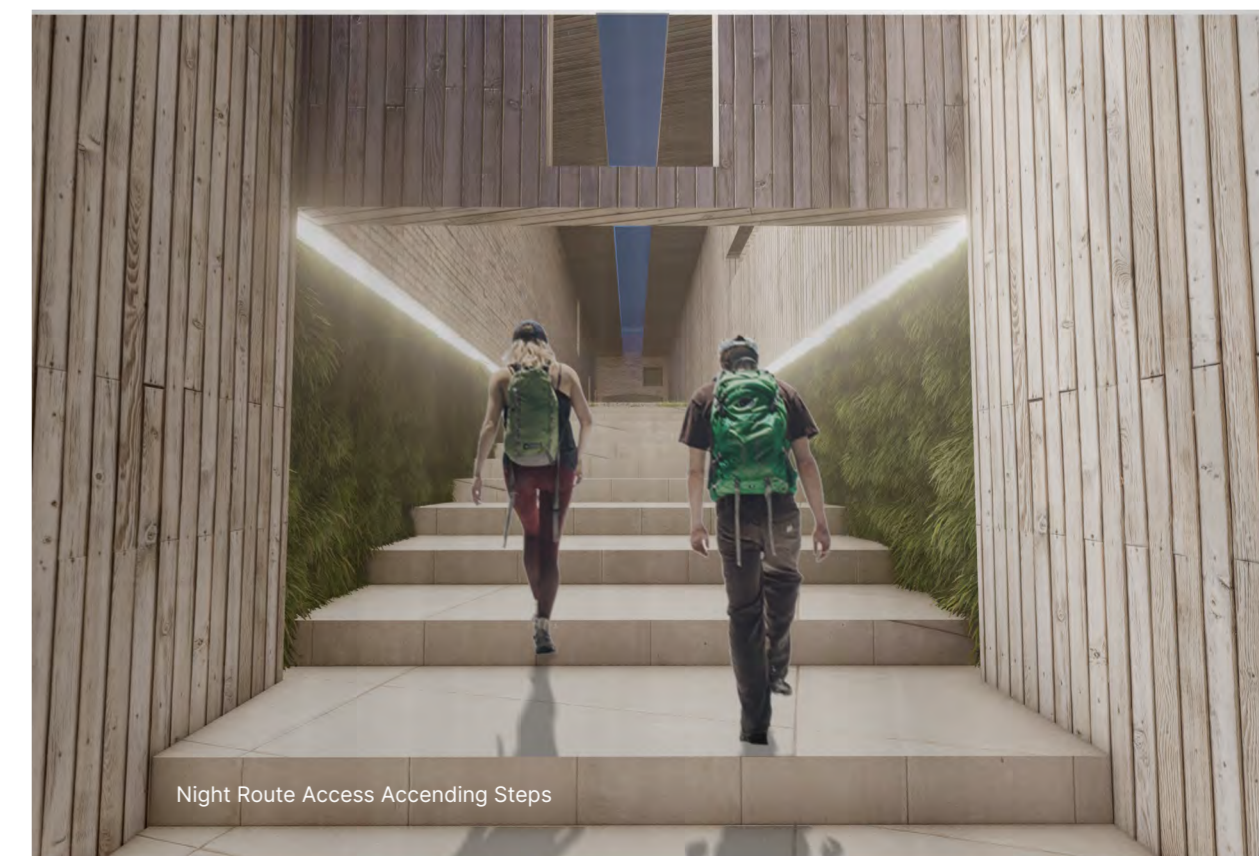


AXONOMETRIC

- | | |
|-----------------------------------|------------------------------|
| 1. Extension Exterior Wall | 8. Open Infinity Corridor |
| 2. New Extension Lower Level Cafe | 9. Public Toilets |
| 3. Existing Building | 10. Cafe Kitchen |
| 4. Hostel Second Floor | 11. Visitor Centre Extension |
| 5. Cafe Outdoor Terrace | 12. Tiered Grass Courtyard |
| 6. Upper Level Cafe | 13. Green Roof |
| 7. Existing Building Roof | |



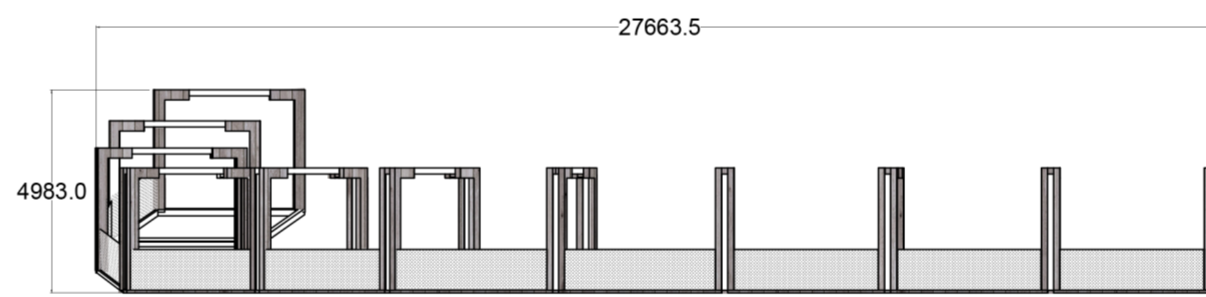
Descending Down Infinity Corridor Steps



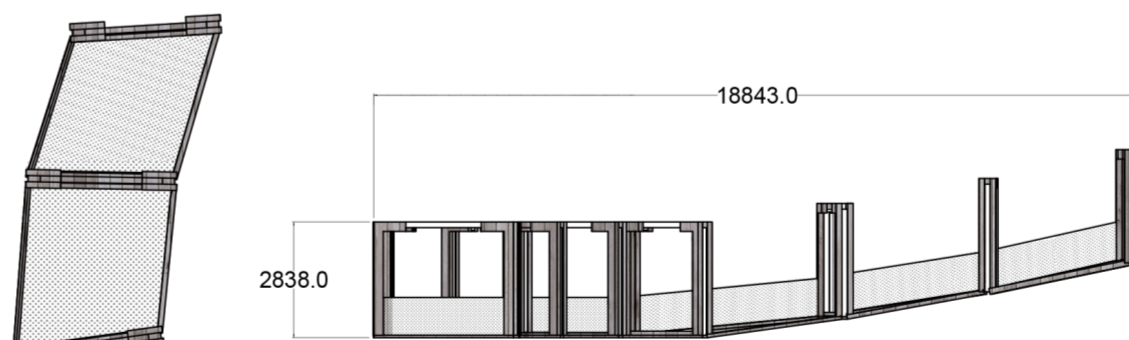
Night Route Access Ascending Steps



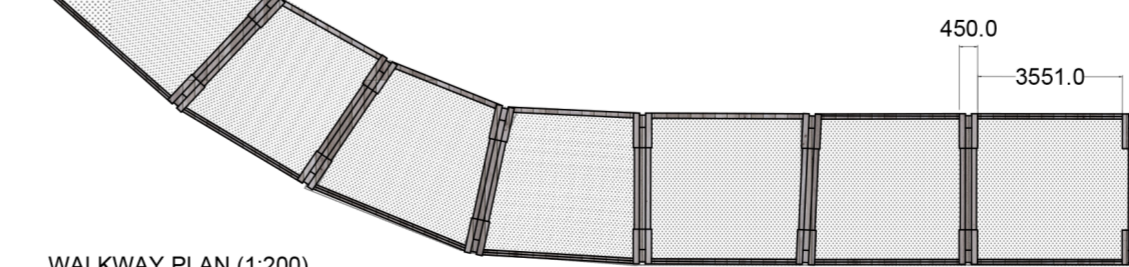
CANTILEVER WALKWAY
DETAIL DESIGN



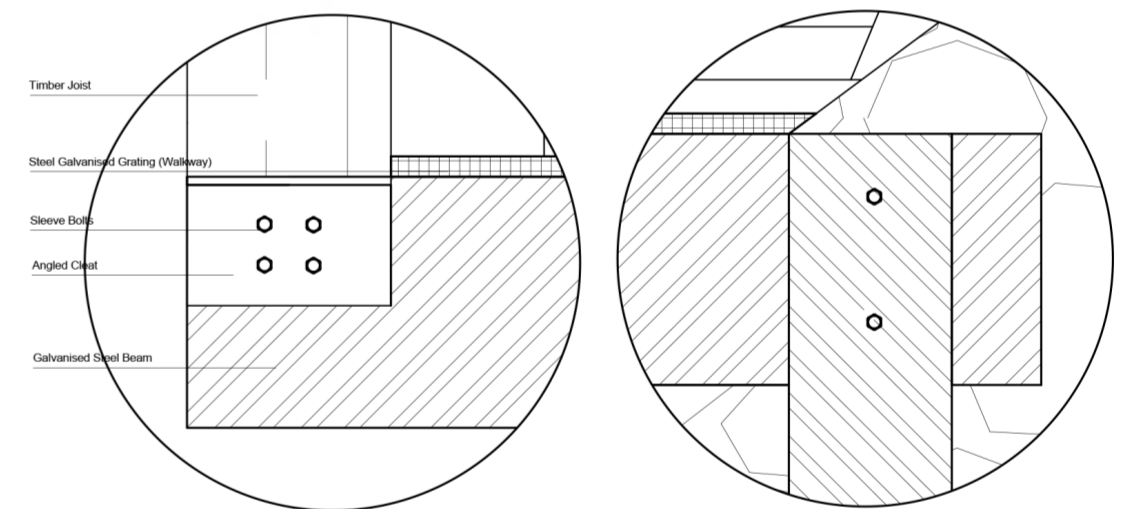
WALKWAY SOUTH EAST ELEVATION (1:200)



WALKWAY NORTH EAST ELEVATION (1:200)

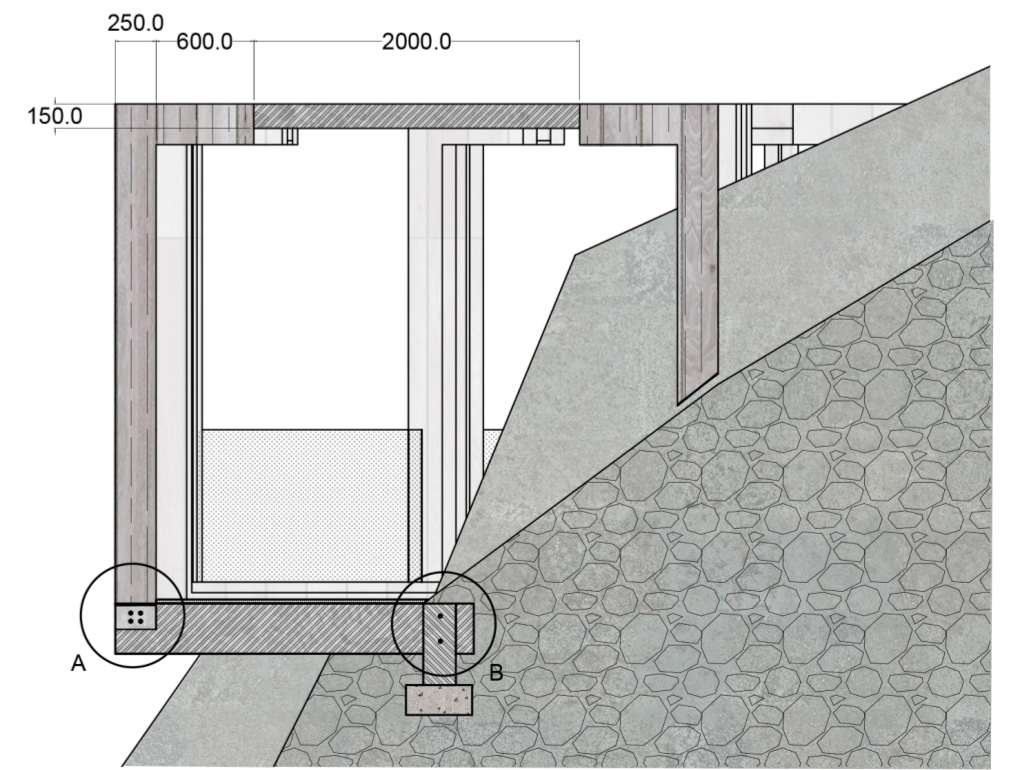


WALKWAY PLAN (1:200)



DETAIL A (1:10)

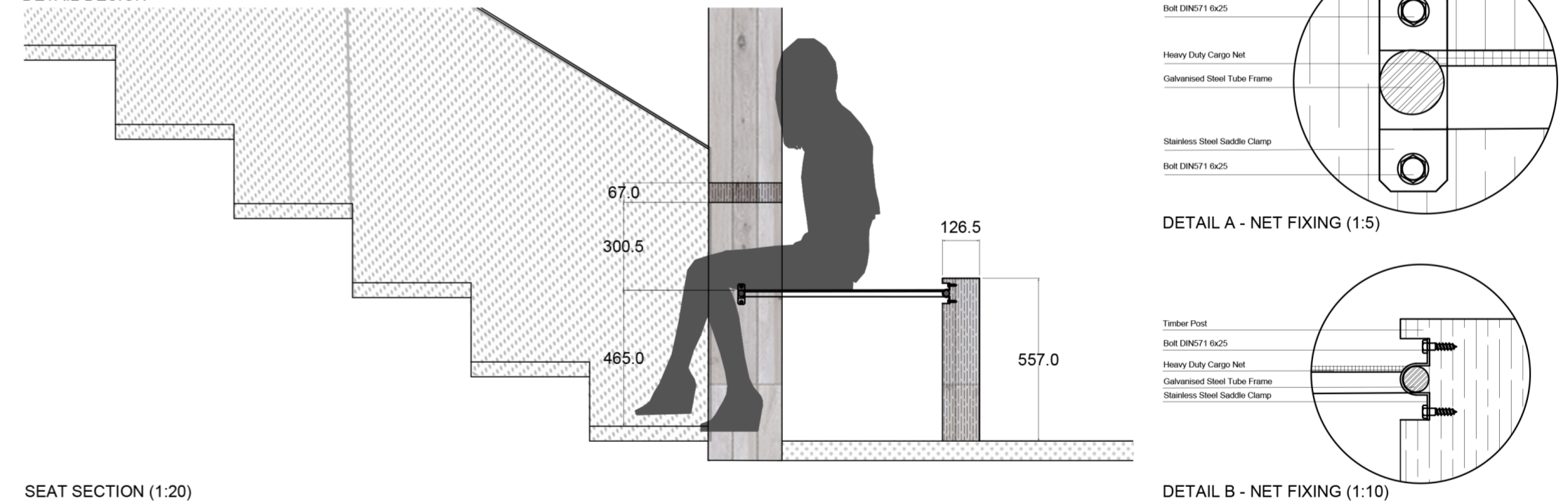
DETAIL B (1:10)



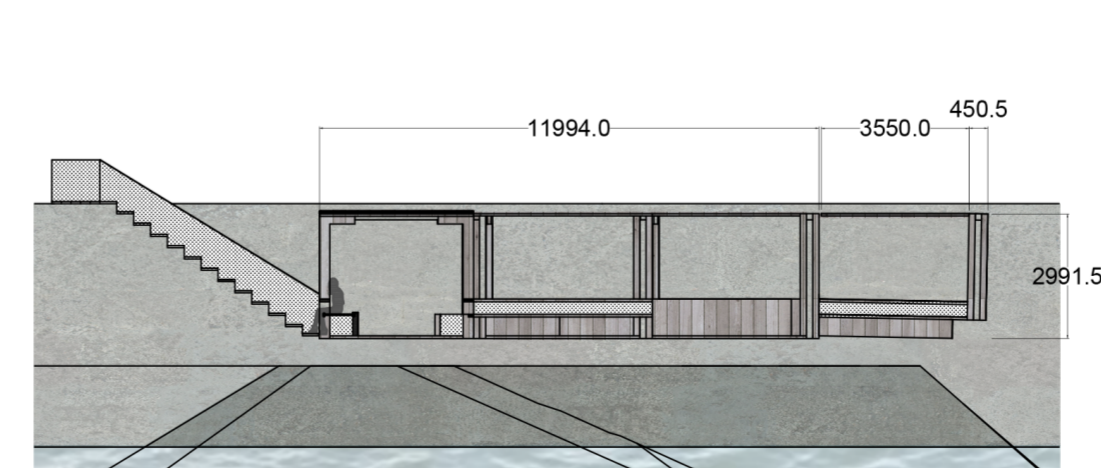
SECTION CUT OF WALKWAY INTERSECTION WITH ROCK FACE (1:50)



LOWER VIEWING PLATFORM INBUILT SEAT
DETAIL DESIGN



SEAT SECTION (1:20)



VIEWING PLATFORM SOUTH EAST SECTION (1:200)

