

## CONCEPT

Since the beginning of human history, science and religion have always been subjects of conflicts. These two concepts represent two major contradictory human school of thoughts.

This leads us to wonder: What if science met faith?

This version of Romeo & Juliet illustrates a robot, created by humans, finding its way to faith. rOm+°, a machine, grows a consciousness and meets jVl/eT, an angel existing in its own «mind». This encounter represents rOm+° newfound faith. While they both accept and love each other, seeing rOm+° believing in heaven doesn't please the scientists whom created it.

In order to express this concept, semi-abstract motion graphics decors will be displayed on a set of movable LED screens. A striking and innovative take on set design helps to convey the idea of a world rythmed by an ongoing technological progress.

AMARY THORSCELDIN

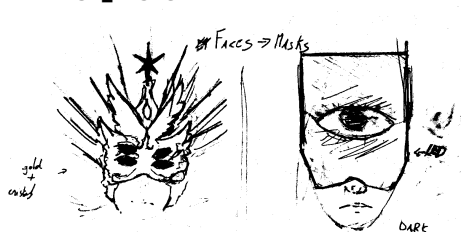


rOm+° &  
jVl/eT

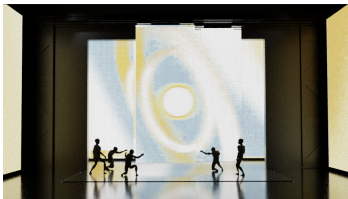
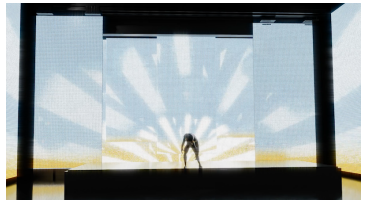
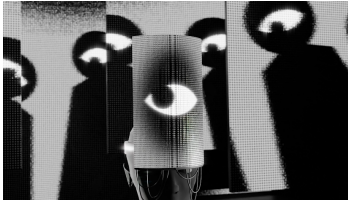
AMARY THORSCELDIN



## MASK\_DESIGN



# VISUALS

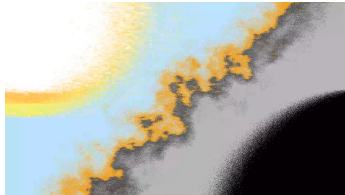
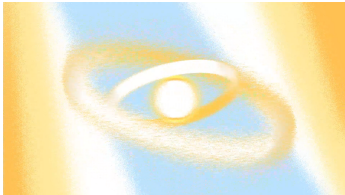
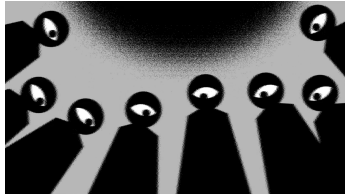
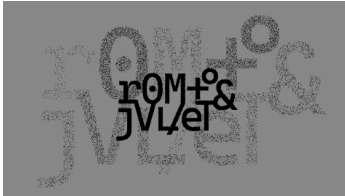


Stills of motion graphics video animation of Robot Romeo & Angel Juliet

Performance Video (MUST SEE) click here:

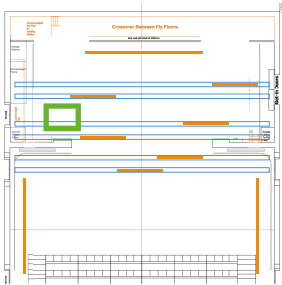


# raw\_VISUALS

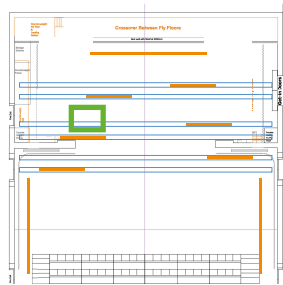


Graphics Design applied to the scenography module at Interior & Spatial Design

## ORGANISATION\_01



## ORGANISATION\_02



## INVENTORY

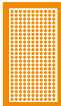


x1 Lift  
platform

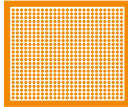


x6 Rails

ANIMAY THUNDERCLOUD



x6 LED screens  
2x7m



x3 LED screens  
9x7m

Th4NK\_Y0u