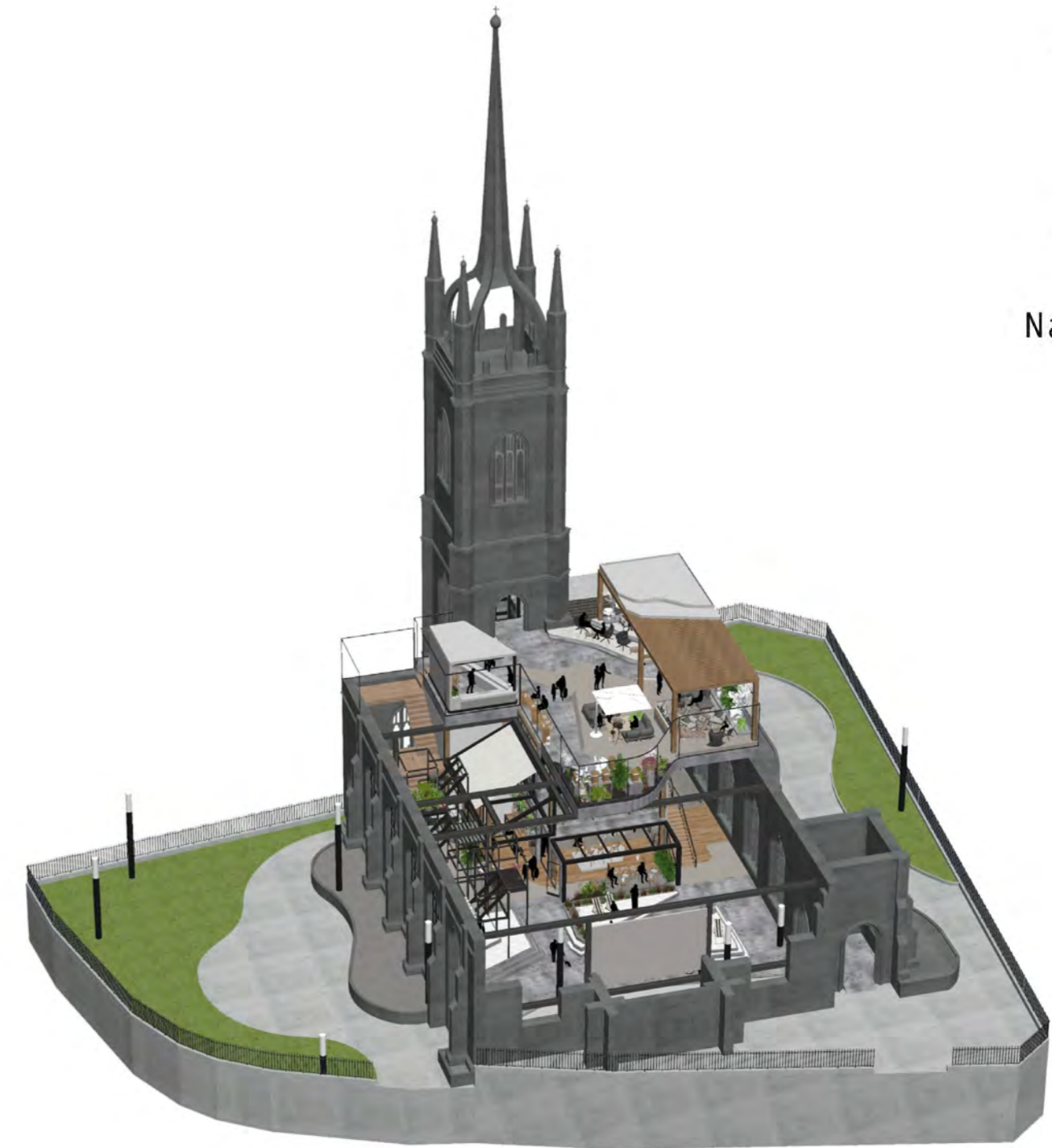




Nature x London



DESIGNER STATEMENT

IRIDA TSVETANOVA , INTERIOR & SPATIAL DESIGNER

The main inspiration for a great range of my design projects throughout my studies has been the beauty of contrast between two opposites. From old and new, geometric and organic, to more specifically the contrast between nature and the built environment. I am fascinated by nature's ability to thrive within cities, as well as the importance of a human-nature connection.

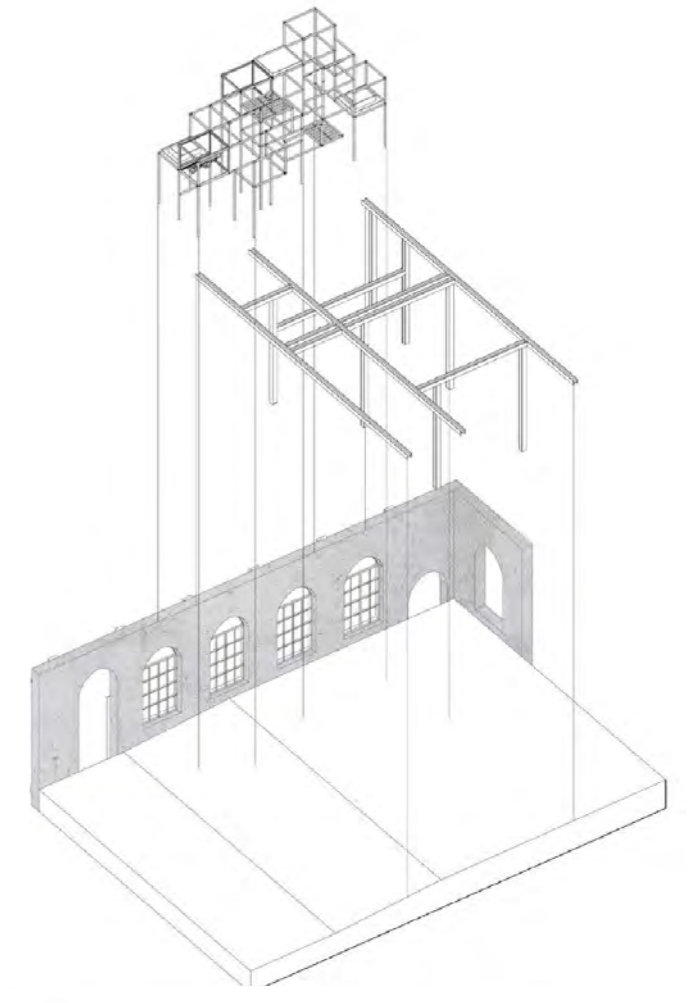
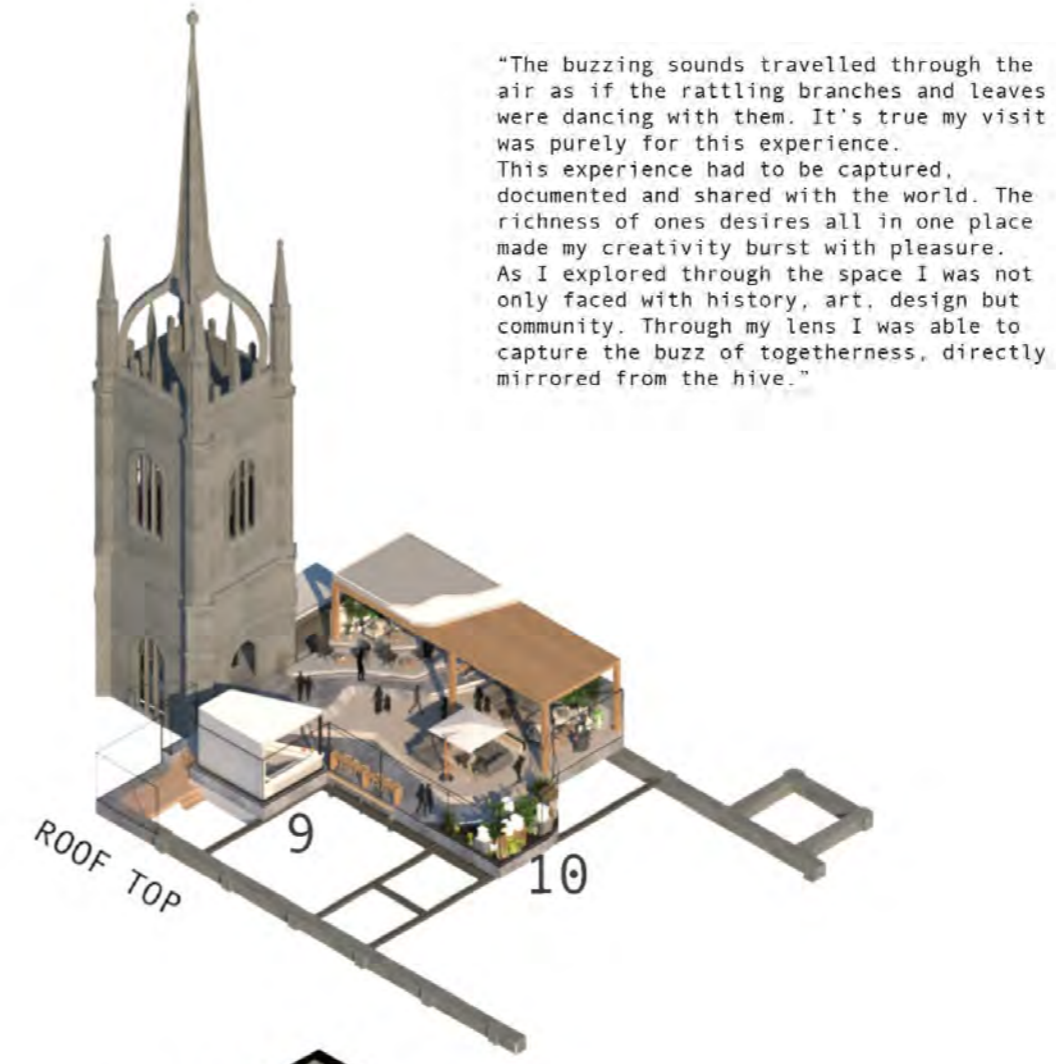
As an interior and spatial designer, I aim to design interior structures with the connection between people and nature as my main objective. I believe when this contrast is highlighted and spaces are designed to influence connection, the positive benefits to both increase tremendously. From health and wellbeing for people to habitat and inclusivity for nature.

My final year project was no exception to these values. Designing a multi-purpose centre focusing on increasing and welcoming honeybees into a hip complex situated in a church ruin in the city centre of London. Equipped with bee habitats dotted around the building, from hanging beehive structures to two unique beehive walls which allow the visitor to harvest their own honey. As well as an urban garden, outdoor cinema, honey serving café and cocktail bar; rooftop lounge and flower market. All designed to influence human-nature connection and a London bloom to increase pollinating insect diversity within the city.

This project has allowed me to push the boundaries of urban beekeeping whilst welcoming environmentalists, influencers and honey lovers to experience a connection with nature.

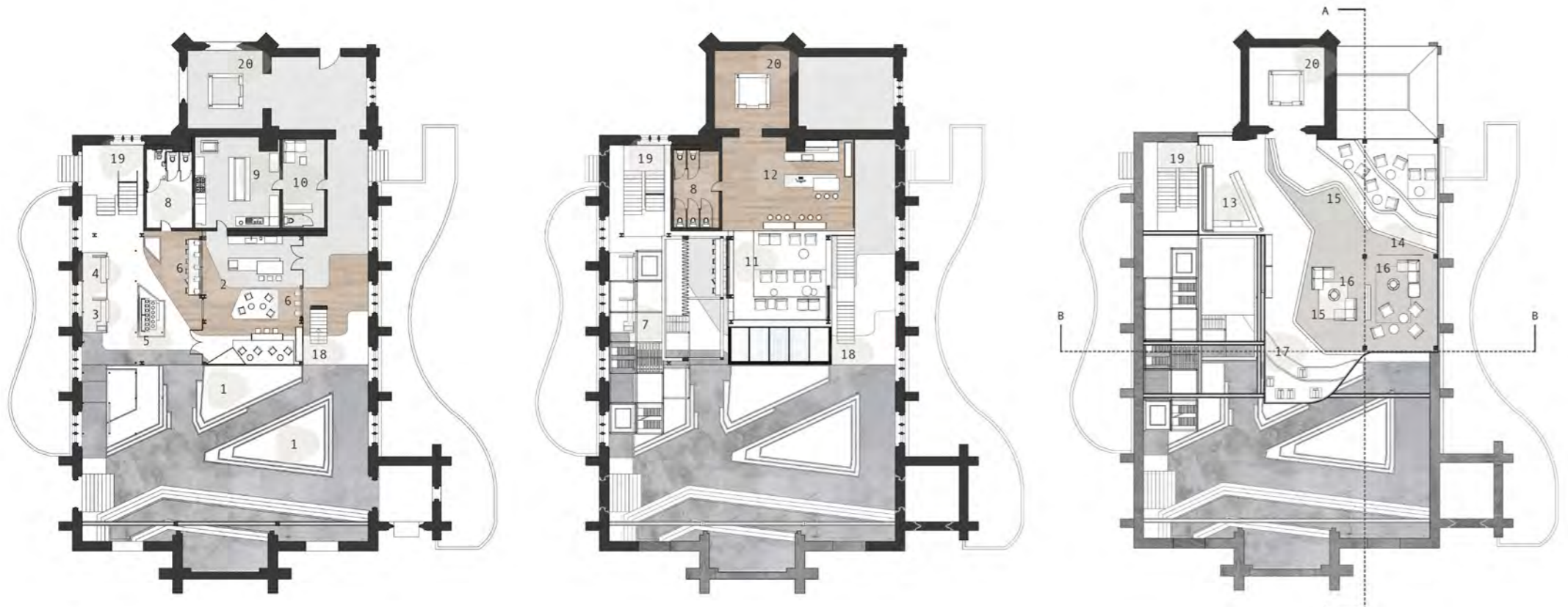






Key :

- 1 Honey Serving Cafe
- 2 Flower Market
- 3 Harvested Beehives
- 4 Juice Honey Carts
- 5 Cinema Seating
- 6 Wild Beehive
- 7 Cinema Screen
- 8 Lift Through Tower
- 9 Roof Top Cocktail Bar
- 10 Roof Top Beehives



Key

- 1. Outdoor Seating
- 2. Honey Cafe
- 3. Honey Cart
- 4. Juice Cart
- 5. Flower Market
- 6. Harvested Beehive
- 7. Wild Beehive
- 8. W/C
- 9. Kitchen
- 10. Staff Room
- 11. Cinema Seating
- 12. Food & Drinks Bar
- 13. Roof Top Bar
- 14. Roof Top Presentation Screen
- 15. Soft Seating
- 16. Roof Top Fire Pit Areas
- 17. Roof Top Beehives
- 18. Main Stairs
- 19. Stairs To Roof Top
- 20. Lift Through Building

Scale 1:200











Long Section A-A

Scale 1:200



Short Section B-B

Scale 1:100





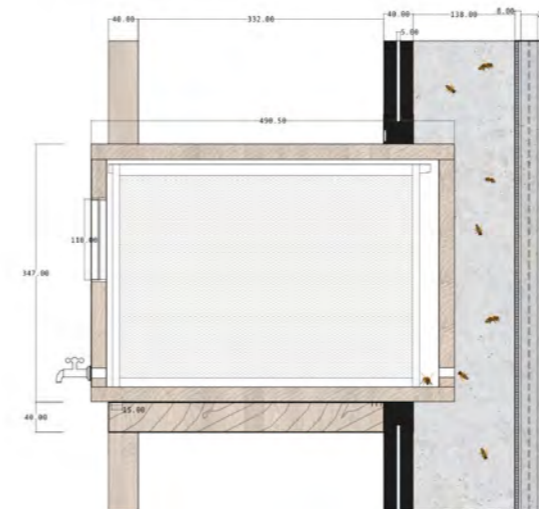
Wild Beehive Detail - Plan  
Scale 1 : 50



Wild Beehive Detail - Front Elevation  
Scale 1 : 50

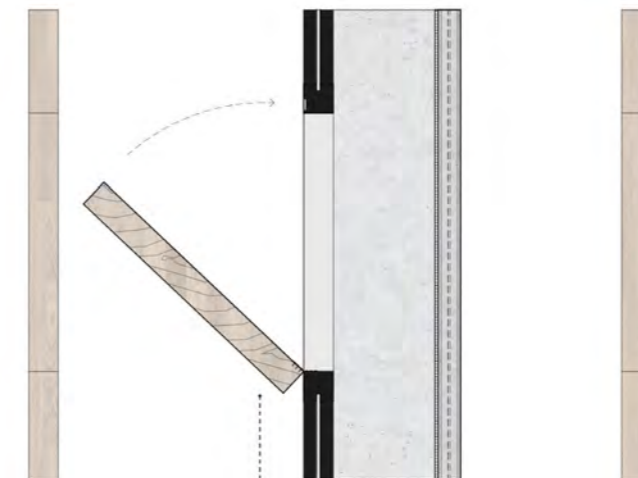


1 Beehive In Place

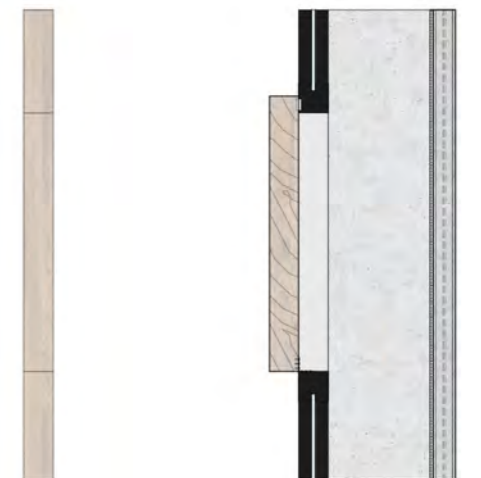


Beehive Detail - Section  
Scale 1 : 5

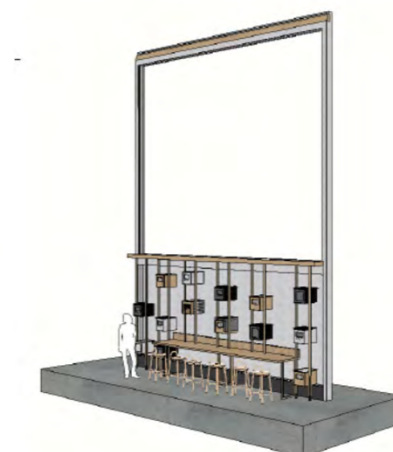
2 Beehive Removed For Inspection



3 Opening Secured Shut



When a beehive required inspection, it can be removed from the frame. The shelf which it sits on can then be closed to stop all the bees escaping through the opening of the frame.



nce - Detail No1



Link to Project Video

<https://www.napierdegreeshow.co.uk/interior-spatial-design/irida-tsvetanova>