

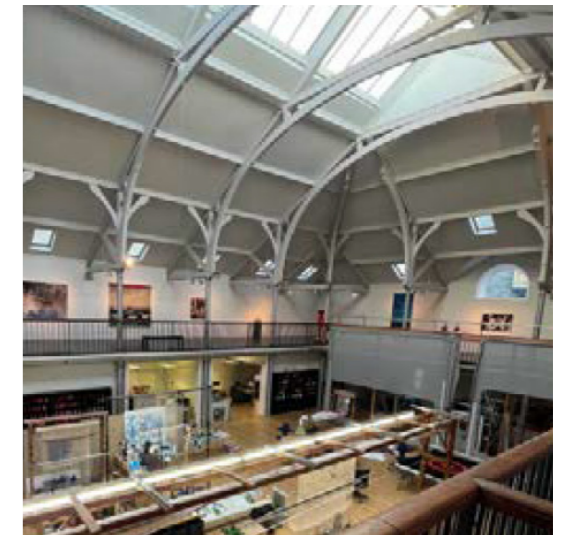


This project is nominated for the Diversity, Equity and Inclusion Award due to its positive approach to providing community facilities where visitors can seek advice, share experiences and further knowledge and engagement through a series of spaces designed to support a wholly EDI ethos.

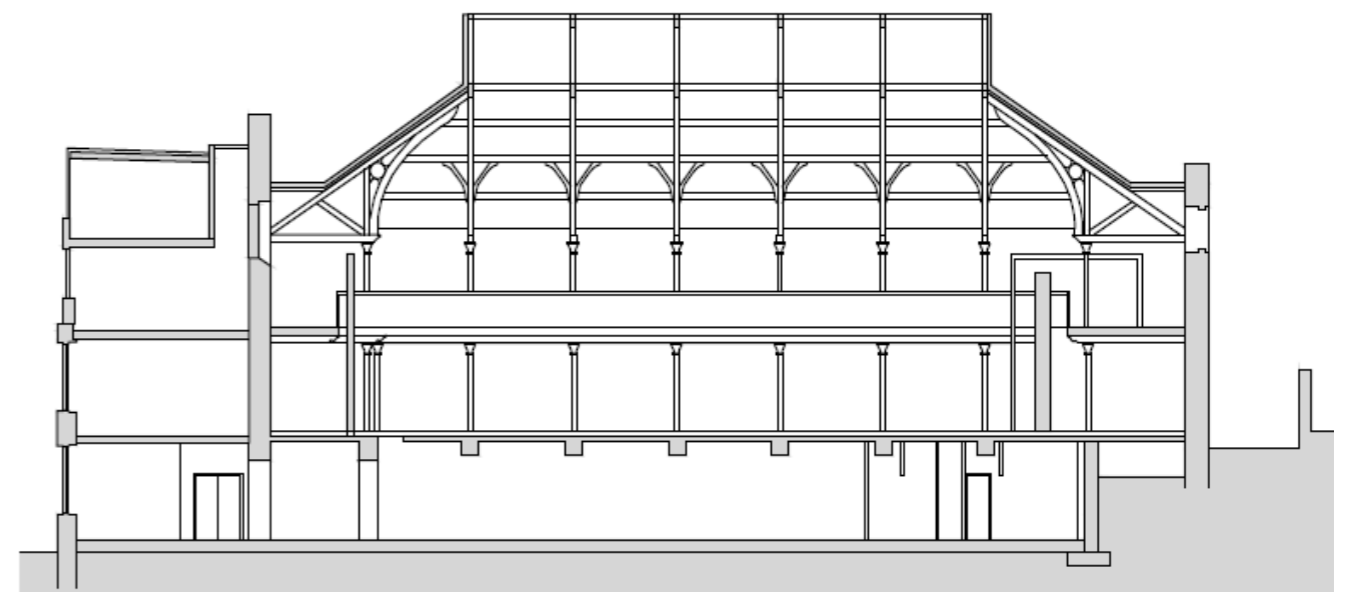
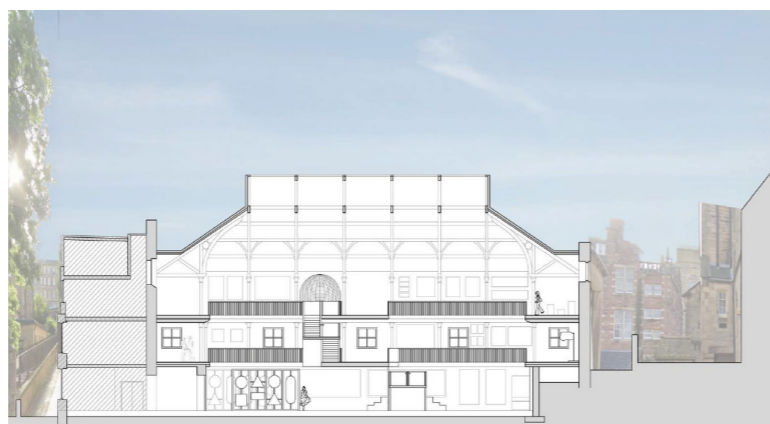
The project adapts a former swimming pool and current exhibition venue in the heart of the city and repurposes it into a centre including educational, advice and exhibition spaces, all of which map to the goals and foundations of an inclusive community.

City Pride is an LGBTQIA inclusive space that celebrates the history of the community and serves today's LGBTQIA community through the provision of a safe space in the heart of the city, where visitors can access advice and support, alongside a museum and gallery for Queer Arts.

The student has worked in close participation with members of the city's LGBTQIA community and includes their work in the project to illustrate how the spaces might be curated and used as part of the project's central exhibition programme.



Above: Gallery Mezzanine over the Museum
Right: contextual long section.



Design Ethos & Strategy.

The design ethos for City Pride is inspired by the bold nature of the Memphis design movement making use of bright and colourful shapes and patterns.

At the core of the design ethos for City Pride is use of the pride rainbow colours without rainbow washing. These colours and patterns are key to the design to reflect the diverse LGBTQIA community.



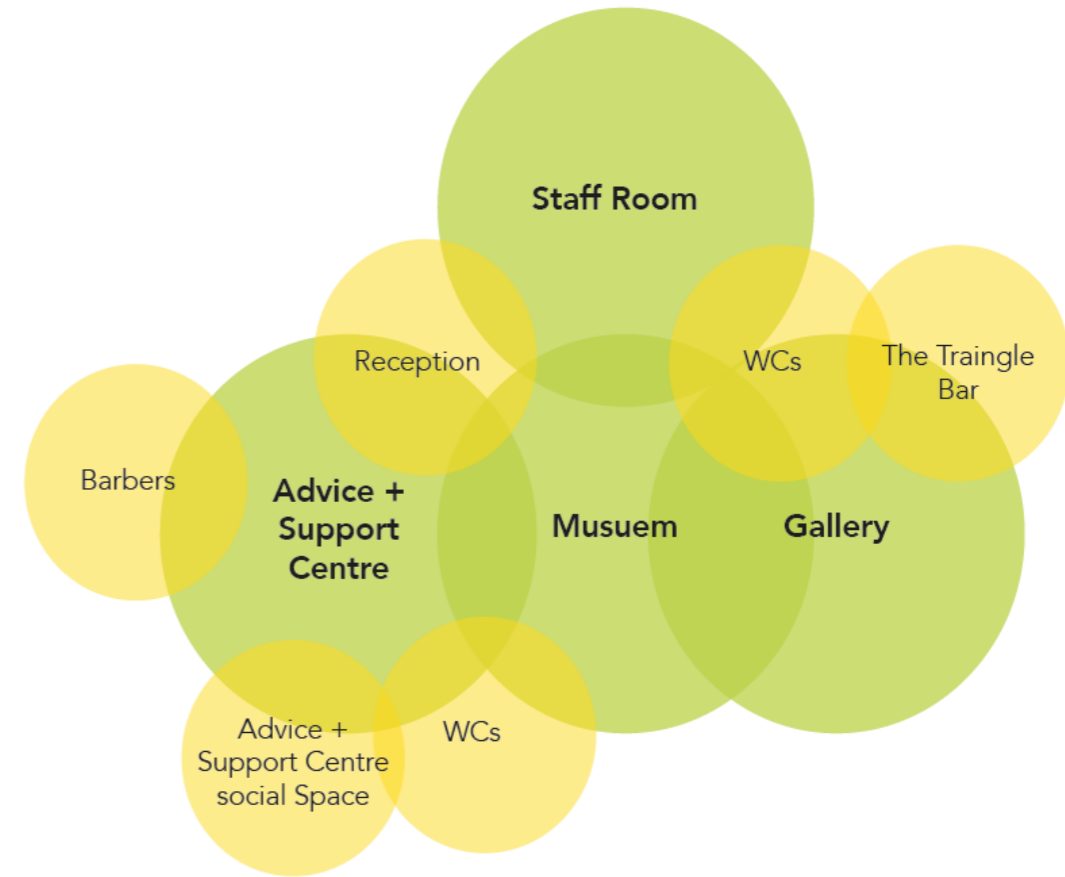
It is also vital that the character of the bathhouse is maintained in the design approach making use of original materials and features of the bathhouse history.

Consideration of longevity and durability throughout material selection is important for City Pride as it is open to the public and needs to stand the test of time.



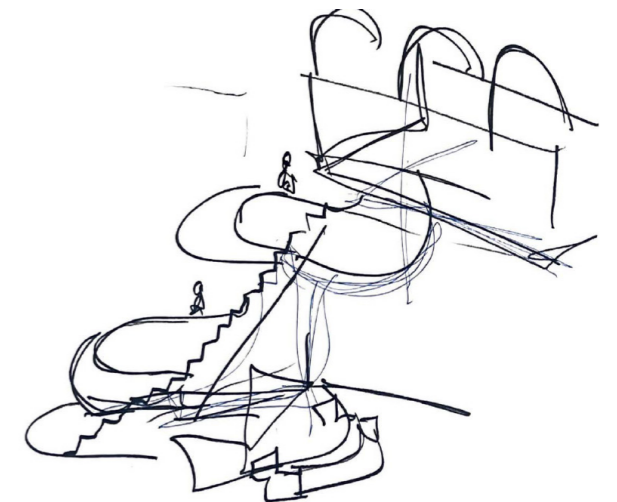
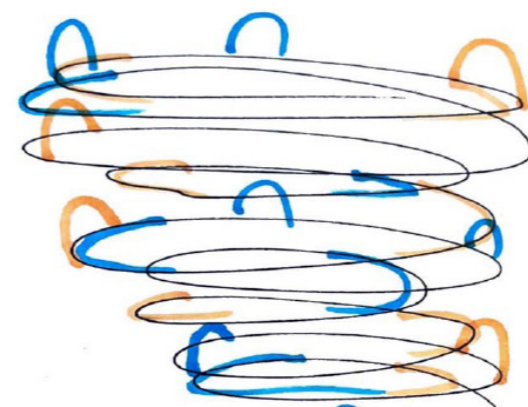
Museum Tiered Seating and Staircase

Strategy Diagram



Concept Design Sketches.

In these sketches the student was exploring the use of the arch shape throughout City Pride and the different axes and ways that they could use the shapes as integral parts of their design interventions.



Design Features.

Connecting Runway Bridges.

In order to connect both sides of the mezzanine level (above the former pool) a central walkway joins both levels; it features a series of small curved balconies with seating.

The walkways are a practical take on the run-ways used in drag shows for drag queens to showcase the art of their transformation.

Wallpaper.

The style of the wallpaper pattern is inspired by Memphis prints the shapes used in the pattern are inspired by the shapes found in the bath house.

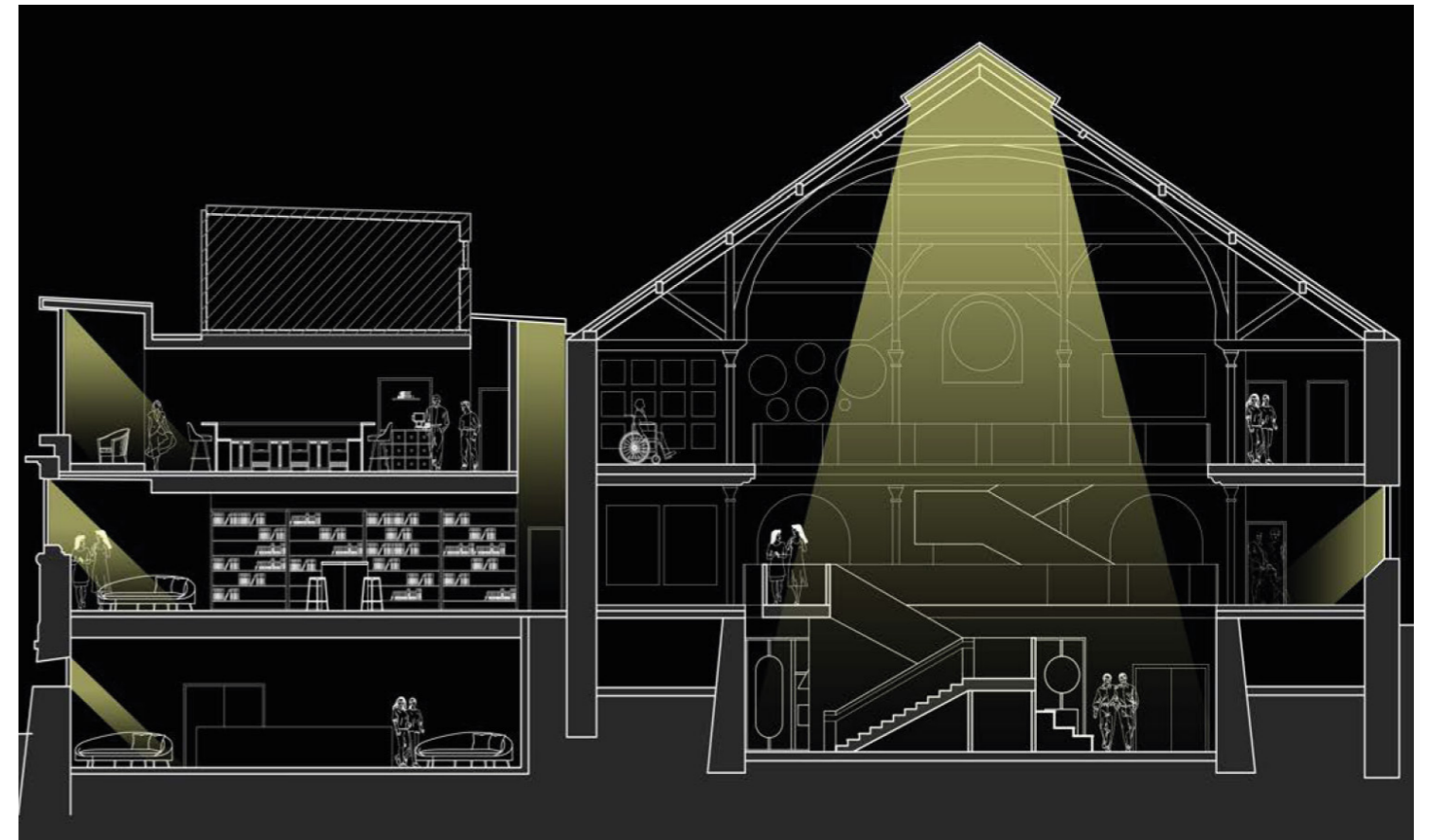
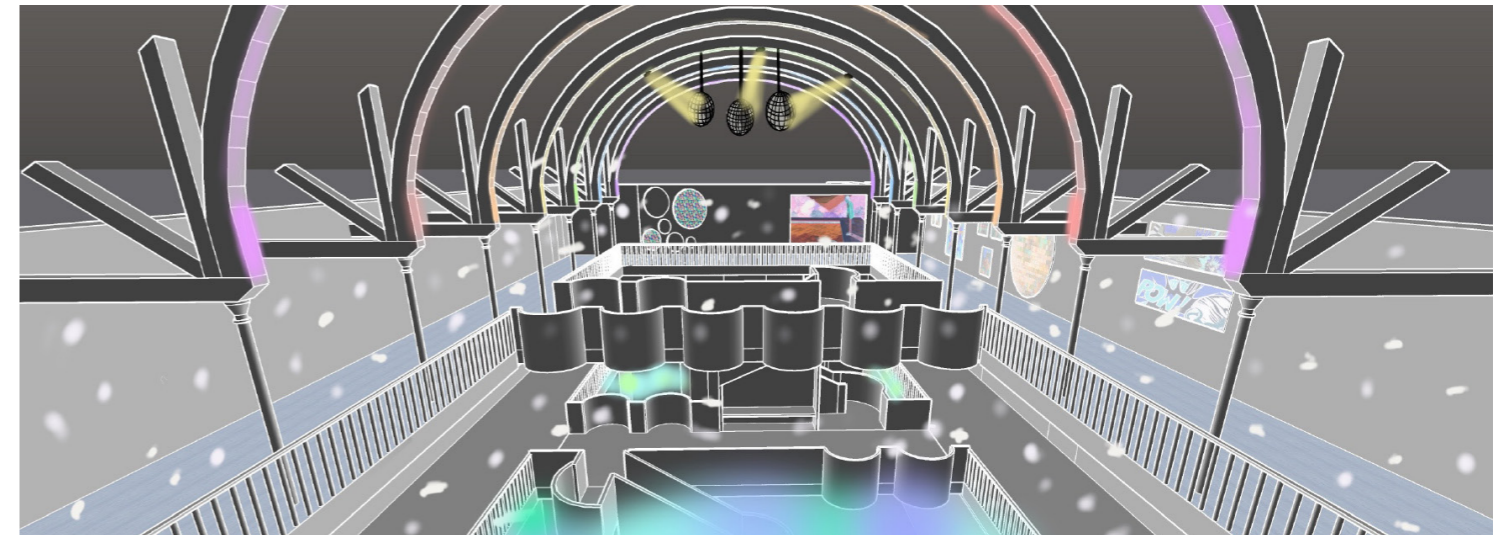
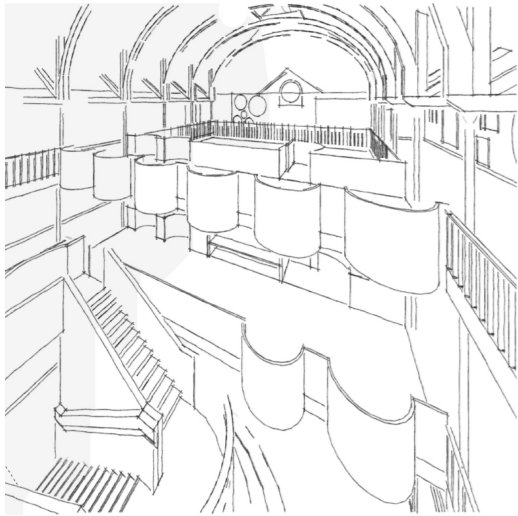
The curved shapes come from the arch shapes of the roof structures, the waved lines are inspired by the set of 3 arches in the bathhouse and the waves of the water in the pool. The straight lines come from the lines of the lanes in the tiles on the bottom of the pool, and the balustrades used on the mezzanine level.

Lighting.

'When I looked into lighting for City Pride I had to think about the existing natural light and then where I would need to add artificial light to illuminate the space.

For the museum space at night I wanted to use a projection to illuminate the space and give it a blue glow, as this space used to be the swimming pool basin so I wanted to use light to make it look like it was a pool again in the evenings.

As a hint to the role of the importance nightclubs in LGBTQIA culture I used two disco balls hung off the central beams with light hitting the mirrored surfaces causing reflections to fill the space'.



Design Proposal, Ground and 1st Floors.

Within the main space I have a tiered seating element that allows visitors with a space to sit and take in the environment and what they are learning about there is a screen adjacent to the tiered seating to allow people to watch queer films and cinema. The tiered seating wraps around a staircase taking you from the ground floor up to the first floor. I wanted to create a journey around the staircase that emphasises the curvature of it and that can become inhabited by the visitors of City Pride.

The ground floor Museum draws upon the rich visual palette of shape and colour from the Memphis design movement and contains information related to the rich cultural landscape of the LGBTQIA community across the city and in Scotland.

Ground Floor.

The ground floor comprises public facing functions such as;

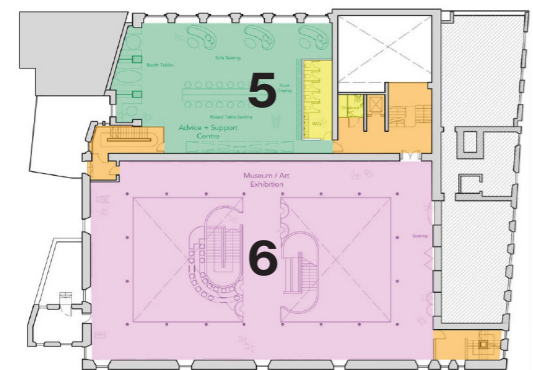
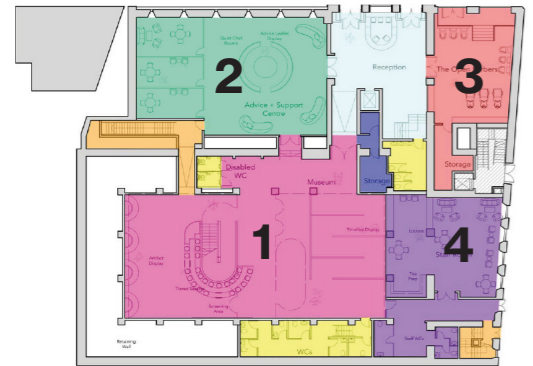
1. Museum Space
2. Advice Centre
3. Open Barbers
4. Staff Facilities



First Floor.

The first floor comprises;

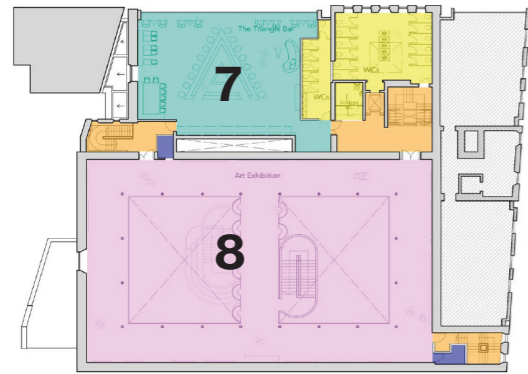
5. Museum and Exhibition Space
6. Advice Centre (cont'd)





Design Proposal, 2nd Floor.

The 2nd floor balconies are a hint to the building's history from the reflections created by the water of the arches. The arched elements reflect in the original purpose of the building and can become inhabited by the visitors to City Pride.



Second Floor.

The second floor comprises;

- 7. The Triangle Bar
- 8. Upper Level Exhibition Space

