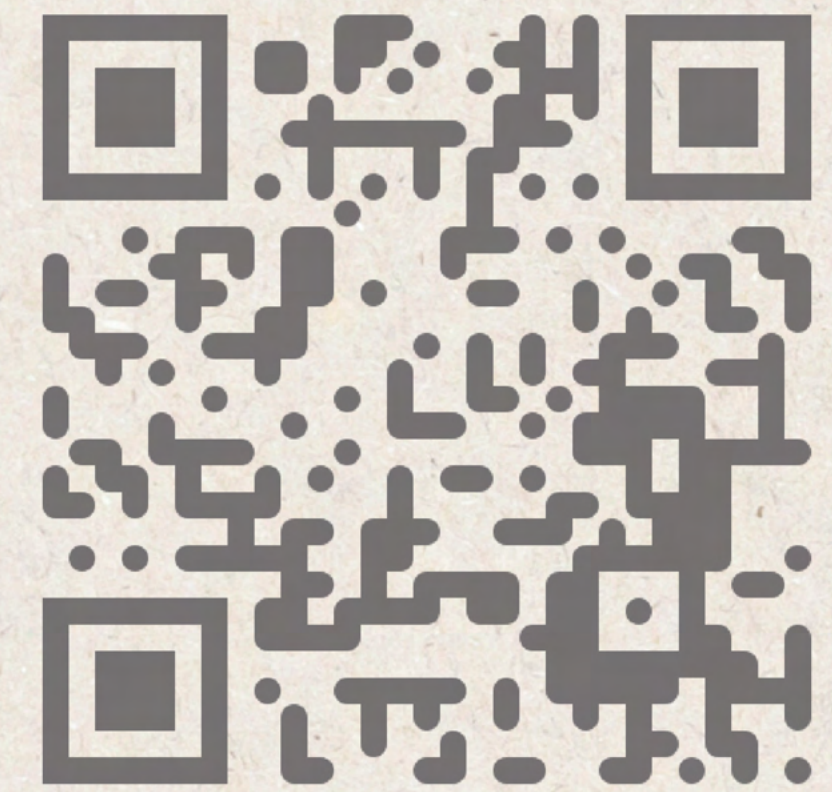


# THE FUTURE OF

The Earth School project explores the transformative impact of prioritising nature in interior design through the transformation of the historic McDonald Road fire station into a hub for interdisciplinary learning. By integrating biophilic design principles into educational spaces, this initiative underscores the urgent need for people to reconnect with nature. Biophilic design that acknowledges visual and sensory exposure to natural patterns and processes can profoundly affect occupants' relationship with the natural world.



# DESIGN FOR EDUCATION





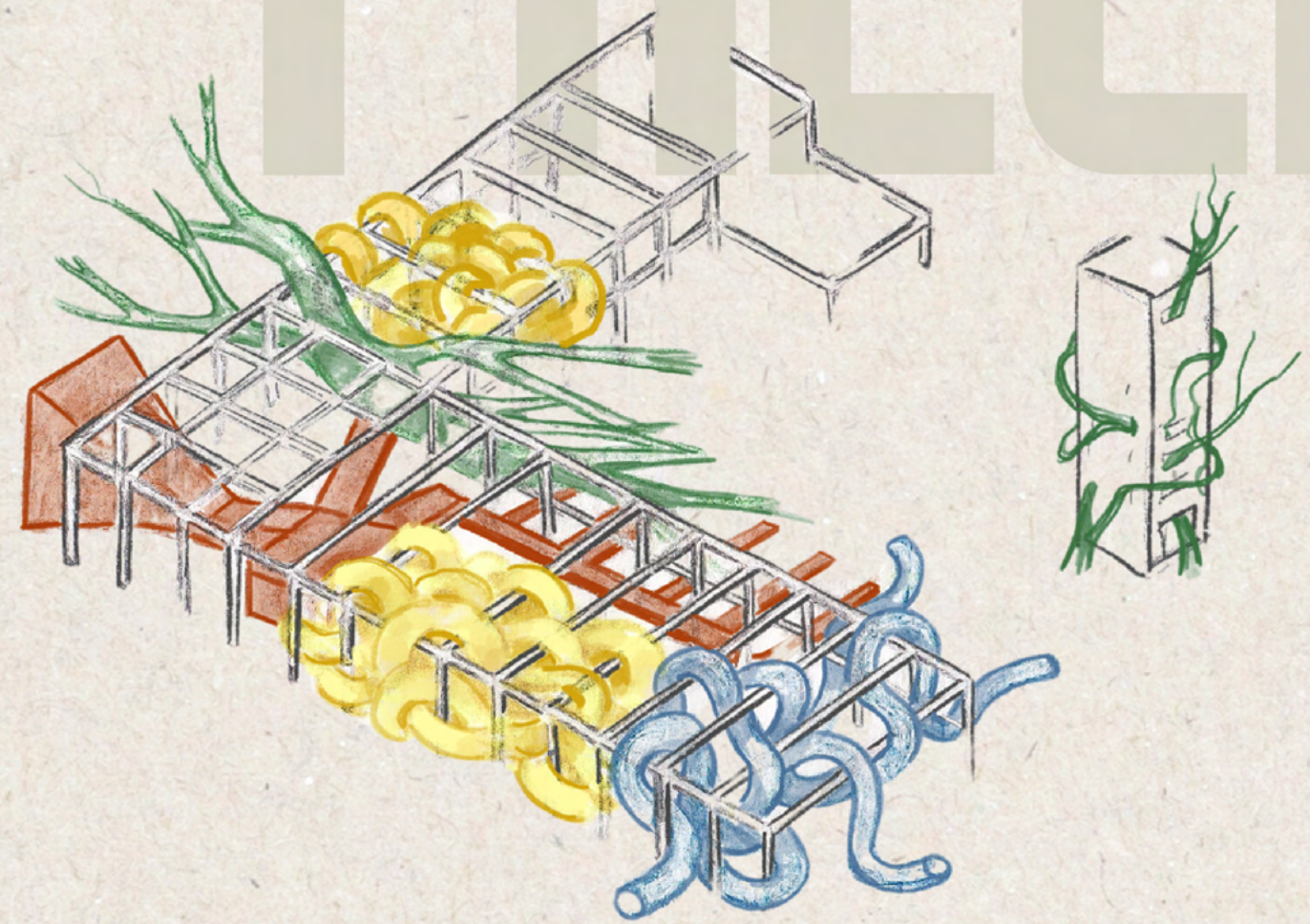
PROJECT BRIEF

# NATURE

Extensive studies of local wildlife, natural systems, and materiality result in an interior reflection of Scotland's natural landscape.

# AS

# PRECEDENT







Local Wildlife and How to Attract Them	
	<b>Robin</b> Habitat: Gardens, hedgerows, parks, woodlands. Food: Insects, earthworms, caterpillars, snails, slugs, berries, seeds. Nest: Cup-shaped with mud, lined with hair and moss. Eggs: 5-8, April - May. Characteristics: An orange breast patch.
	<b>Blackbird</b> Habitat: Gardens, parks, woodlands. Food: Insects, earthworms, caterpillars, snails, slugs, berries, seeds. Nest: Cup-shaped with mud, lined with hair and moss. Eggs: 3-5, April - May. Characteristics: A long, melodious song.
	<b>Wren</b> Habitat: Gardens, parks, woodlands. Food: Insects, earthworms, caterpillars, snails, slugs, berries, seeds. Nest: Cup-shaped with mud, lined with hair and moss. Eggs: 3-5, April - May. Characteristics: A long, melodious song.
	<b>Bumblebee</b> Habitat: Gardens, parks, woodlands. Food: Nectar, pollen. Nest: In the ground, made of mud and lined with dry grass. Eggs: 1-2, June - July. Characteristics: A long, melodious song.
	<b>Ladybug</b> Habitat: Gardens, parks, woodlands. Food: Aphids, scale insects, mealybugs, mites. Nest: In the ground, made of mud and lined with dry grass. Eggs: 1-2, June - July. Characteristics: A long, melodious song.

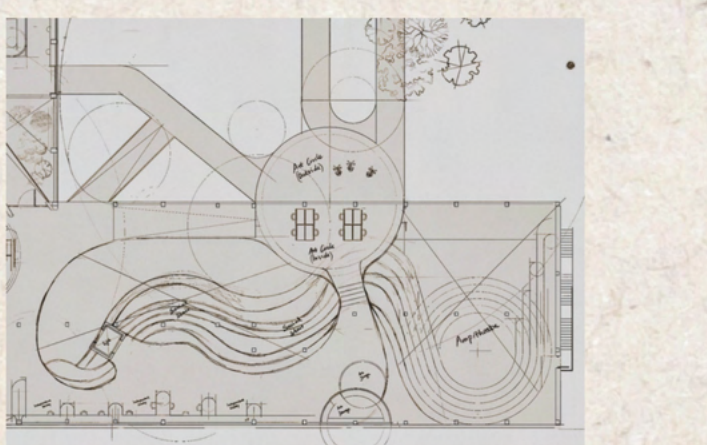
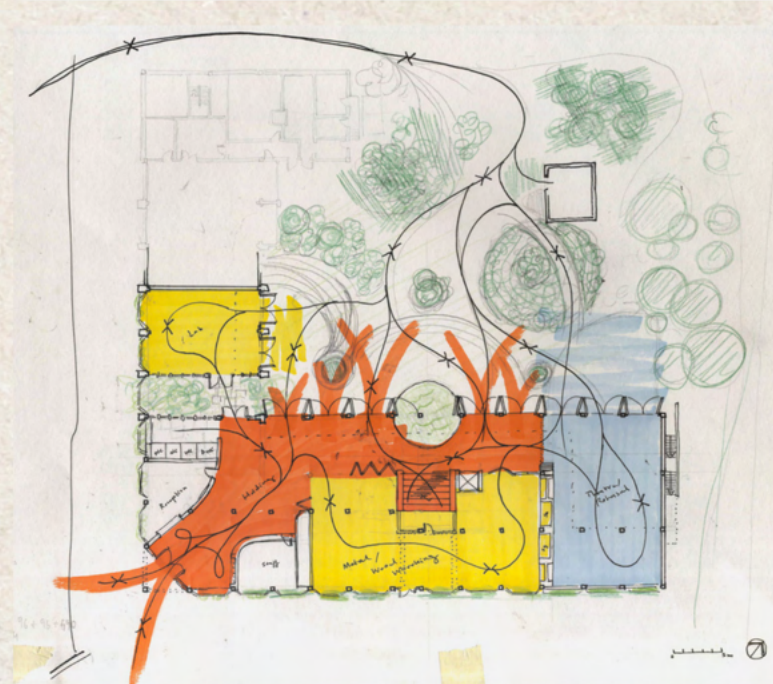
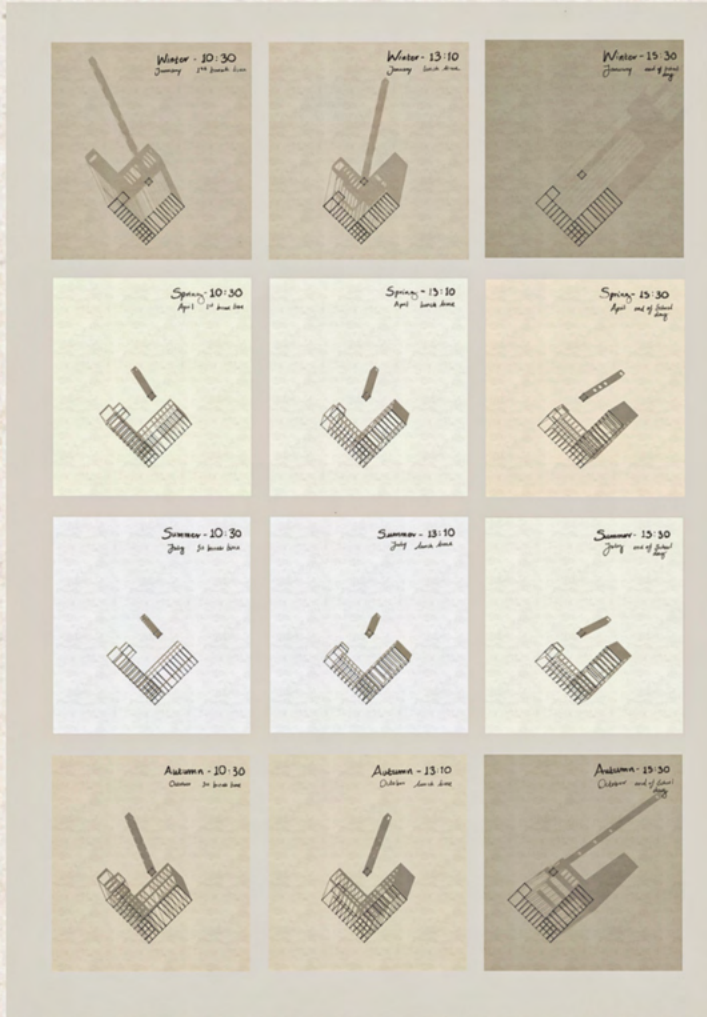
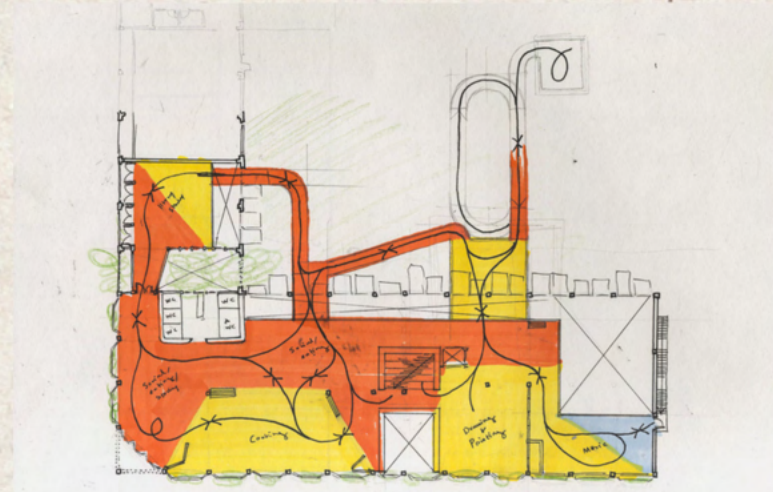
Local Catalogue and Botany: Colour and Material Palettes	
	<b>Sagebrush</b> Habitat: Open, sunny areas. Food: Nectar, pollen. Nest: In the ground, made of mud and lined with dry grass. Eggs: 1-2, June - July. Characteristics: A long, melodious song.
	<b>Apple Tree</b> Habitat: Gardens, parks, woodlands. Food: Apples, pears. Nest: In the ground, made of mud and lined with dry grass. Eggs: 1-2, June - July. Characteristics: A long, melodious song.
	<b>Cherry Tree</b> Habitat: Gardens, parks, woodlands. Food: Cherries. Nest: In the ground, made of mud and lined with dry grass. Eggs: 1-2, June - July. Characteristics: A long, melodious song.
	<b>Raspberries</b> Habitat: Gardens, parks, woodlands. Food: Raspberries. Nest: In the ground, made of mud and lined with dry grass. Eggs: 1-2, June - July. Characteristics: A long, melodious song.
	<b>Sweet william</b> Habitat: Gardens, parks, woodlands. Food: Nectar, pollen. Nest: In the ground, made of mud and lined with dry grass. Eggs: 1-2, June - July. Characteristics: A long, melodious song.

Prioritising views of nature combats interior alienation,

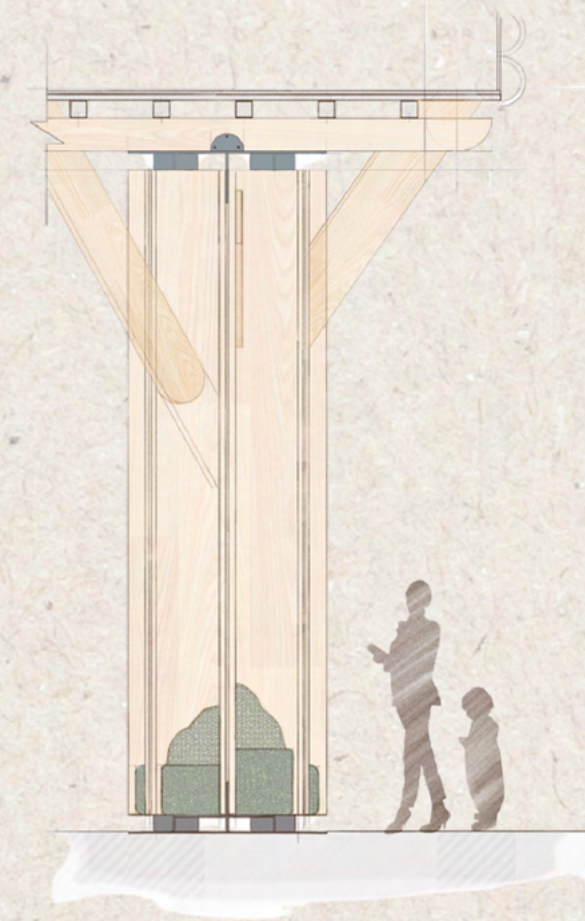
connecting with local natural systems fosters a sense of belonging and responsibility,

while creating mystery through partially obscured views entices occupants to explore what once was alien.

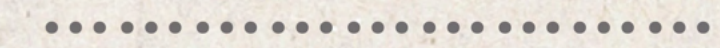
These elements are invaluable in gradually developing an affinity and connectedness to nature, allowing pupils to develop love, care, and respect for their learning spaces and the natural world they reflect.



# BIOPHILIC PATTERNS



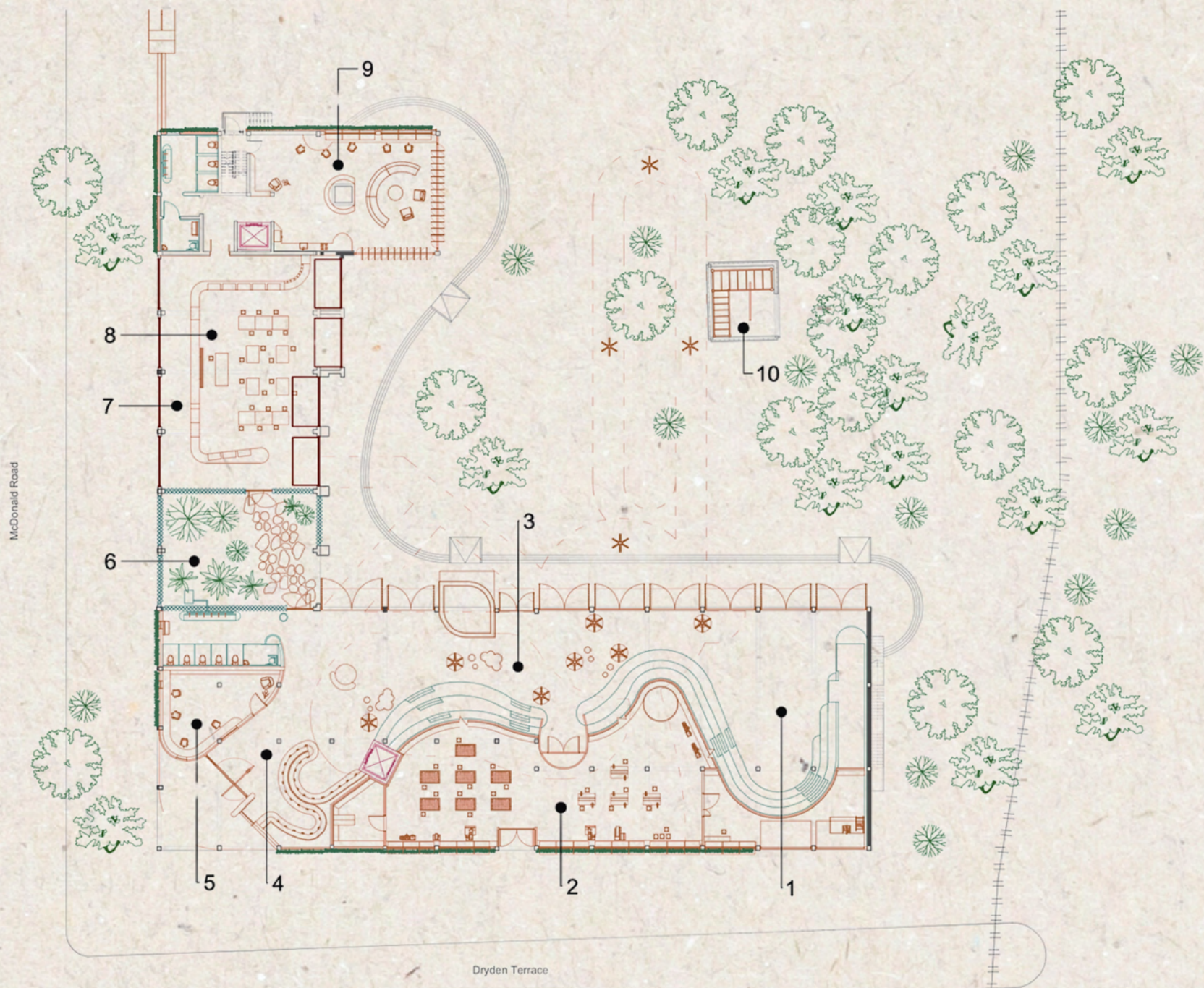
Interiors thus becomes a gateway to a truer connection with nature.



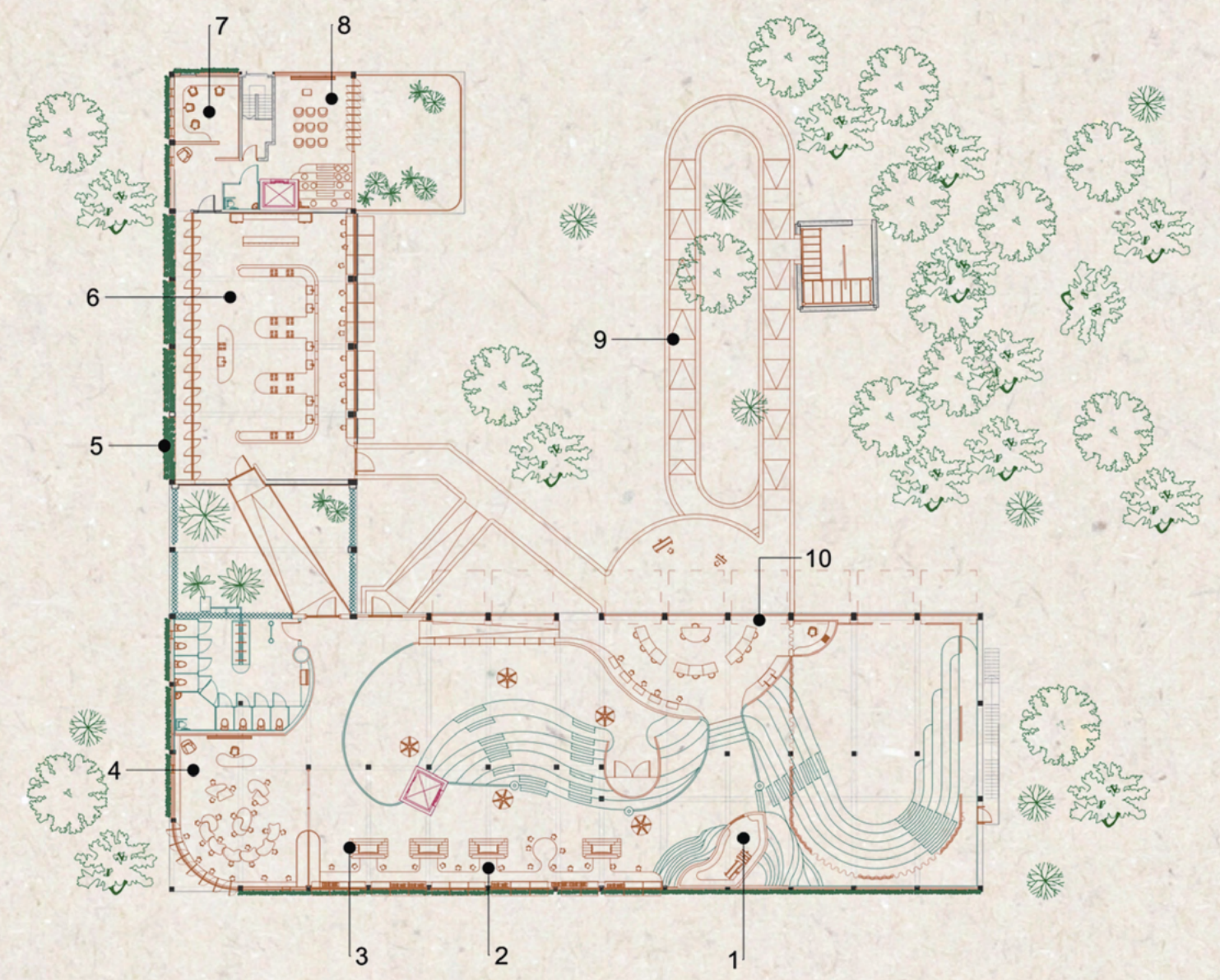


# A PLACE FOR EDUCATION

- Ground Floor
- 1 - Amphitheater
  - 2 - Workshop
  - 3 - Social Hall
  - 4 - Entry/Cloakroom
  - 5 - Reception
  - 6 - Glass Box Garden
  - 7 - Hallway to Staff Zone
  - 8 - Lab
  - 9 - Staff Chill Zone
  - 10 - Climbing Tower



- First Floor
- Art Store - 1
  - Self-study Zone - 2
  - Reading Nook - 3
  - Flexible Classroom - 4
  - Herb Garden - 5
  - Kitchen - 6
  - Staff Office - 7
  - Staff Classroom - 8
  - Garden Ramp - 9
  - Art Circle - 10



# FOR SUSTAINABLE DEVELOPMENT

