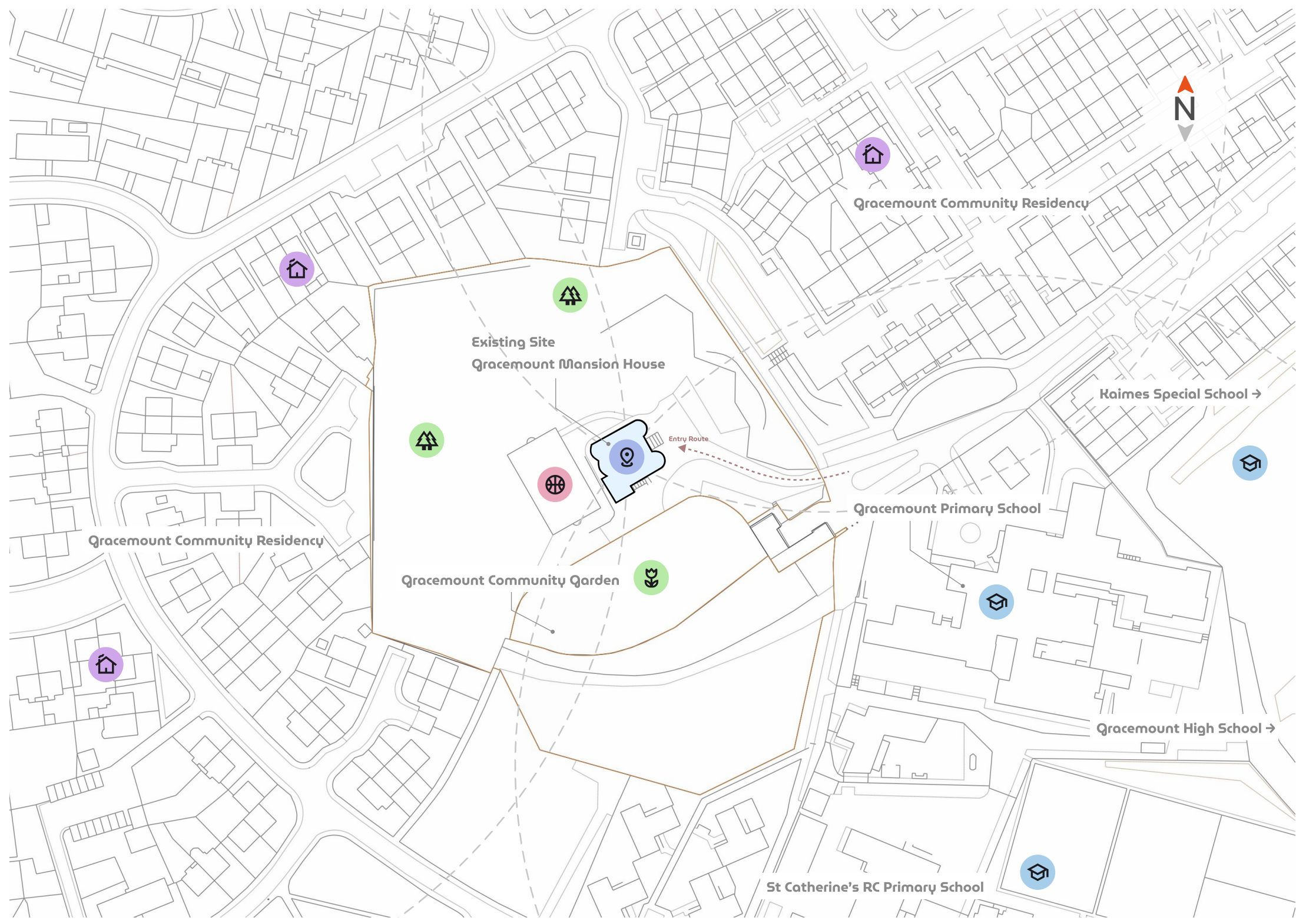


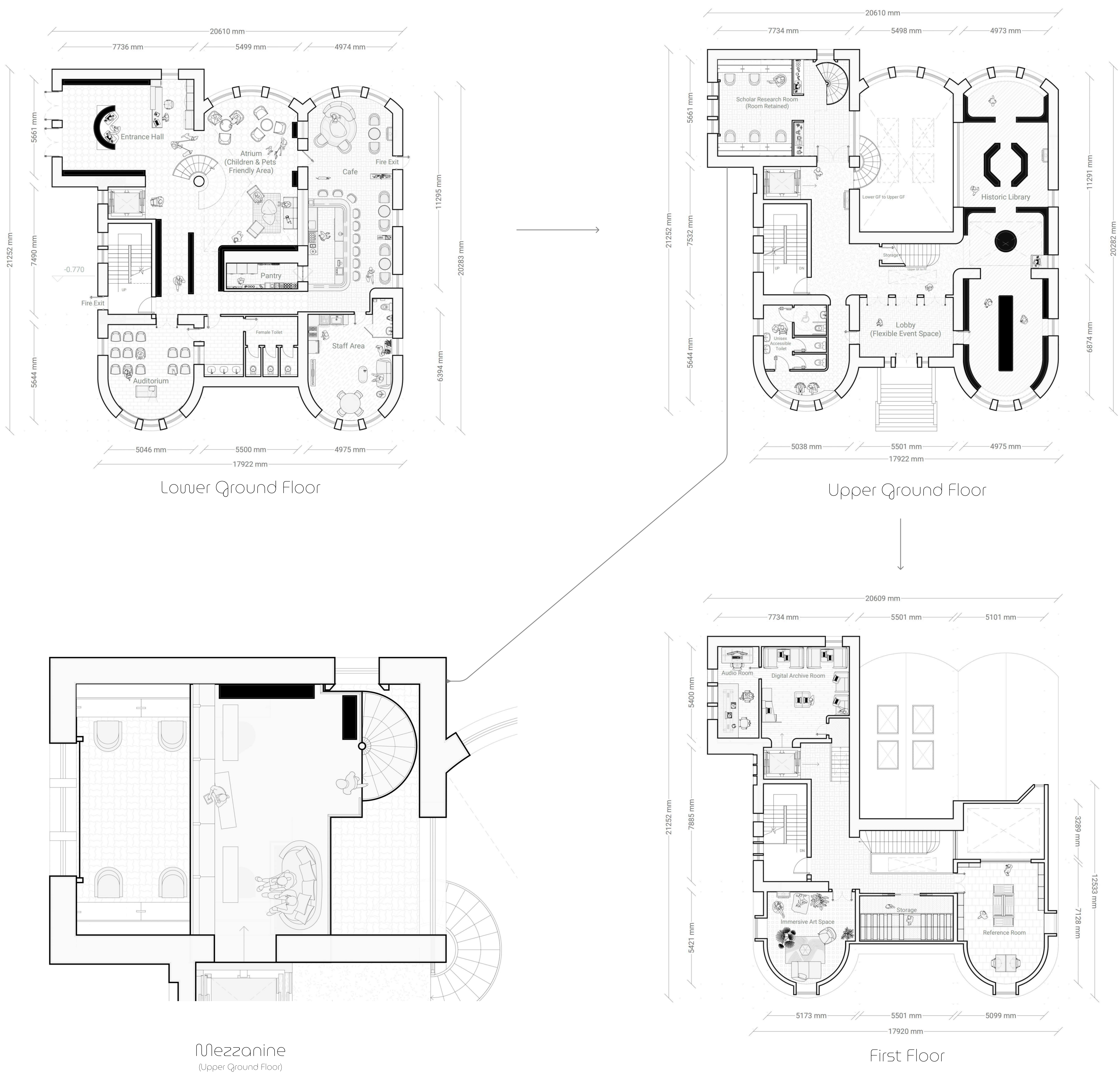
Craft & Making Award nomination:

This pre-honours project has been nominated in the craft and making category as a body of work which communicates an ambitious and innovative approach to modelmaking, which is embedded throughout the idea and development, as they test, reflect and remake.

The student presents a resolved project to an exemplary standard, showcasing a thoughtful approach with admirable care and skill in their making process.



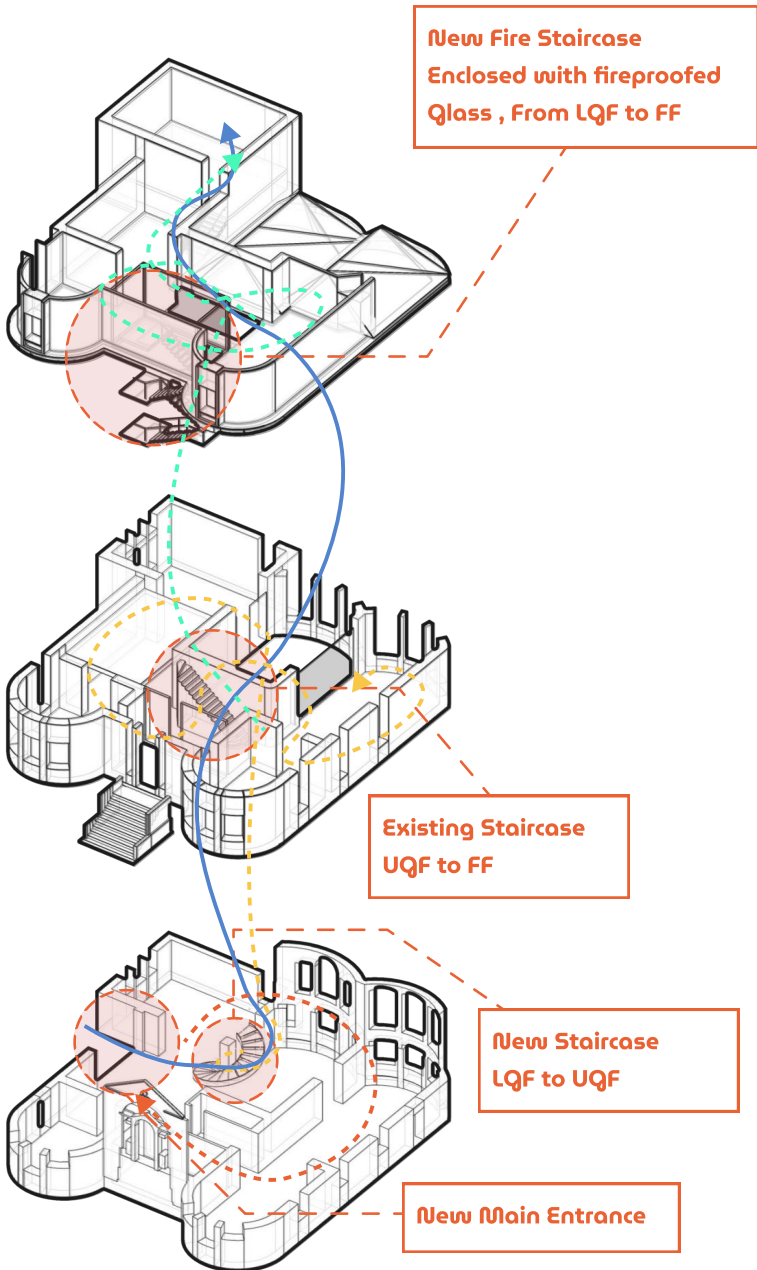
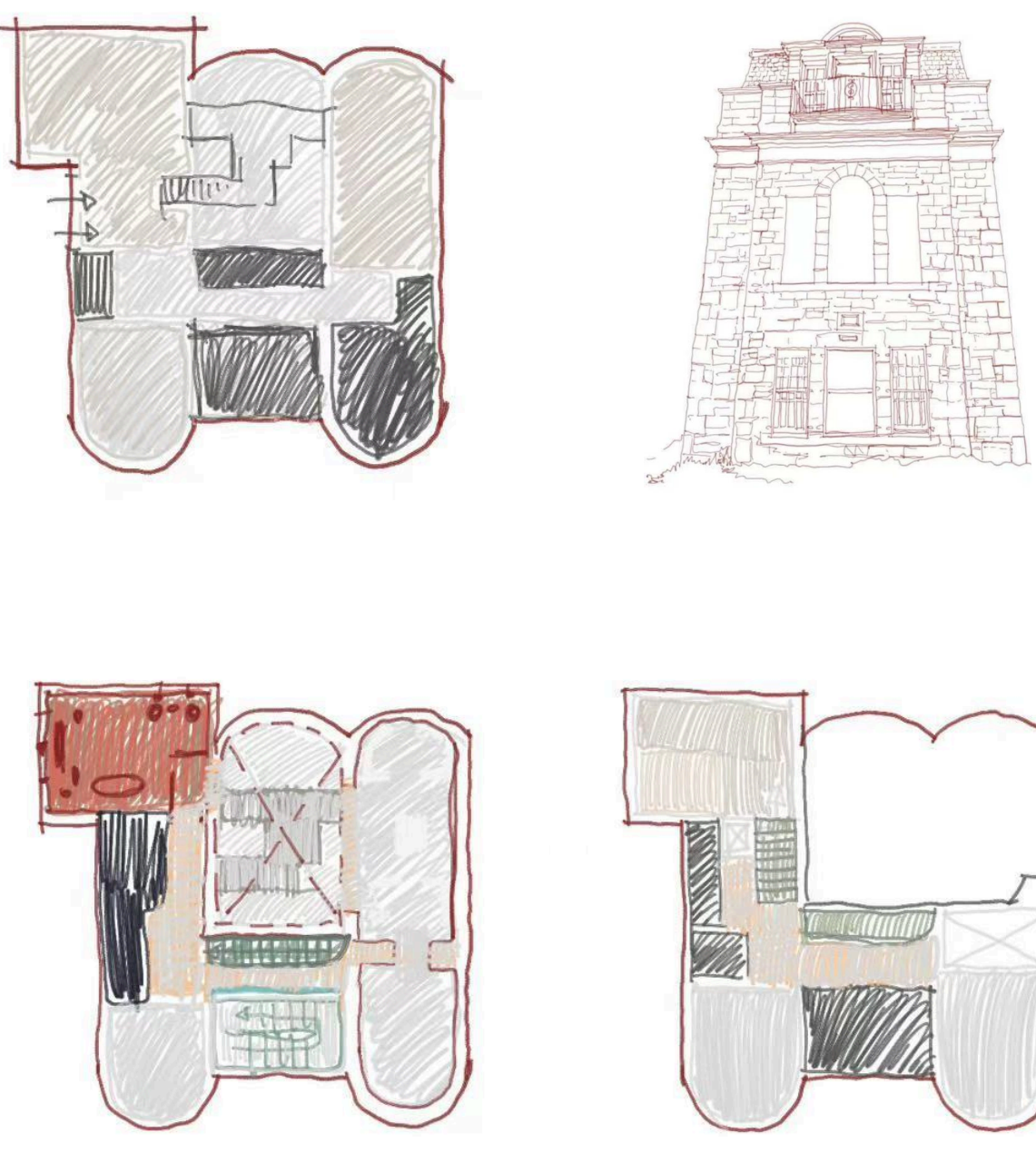
Technical Drawing Plans
Gracemount Mansion House, Edinburgh.



Historic Building Renovation:
Designing a History-Themed Library

Gracemount Mansion, locally called "The Mansion," was built around 1780 and is a 'B' listed building in Edinburgh. It originally served as the rectory for St. Catherine's Chapel near the Balm Well. In the early 20th century, the Green family owned the property, and after Charles E. Green's death in 1920, it was gifted to the community. From 1963, under John Boag MBE, it operated as a youth and community center until its closure in 2018.

What we aim to do is to breathe new life into this once-glorious mansion house. I plan to transform it into a historic library that serves the surrounding community and nearby schools. The target users include local residents as well as history enthusiasts from around the world. The library's collection will focus primarily on Scottish history rich in national character, complemented by related historical works from other regions of the world.



Library Design Manifesto:
A Human-Centered Approach

Echoes of Time

The Historic Library is not only a building—it is an echo chamber of accumulated human experience. By archiving both global and Scottish heritage, the space becomes a cultural resonance box where ancient voices, suppressed narratives, and forgotten whispers are reactivated in the present.

1

Embodied Reading

In a world once shaped by manuscripts and hand-inked letters, the Historic Library revives the embodied act of reading. From medieval scrolls to Enlightenment-era journals, it invites visitors to physically engage with timeworn texts and historically authentic reading environments.

2

Collective Memory

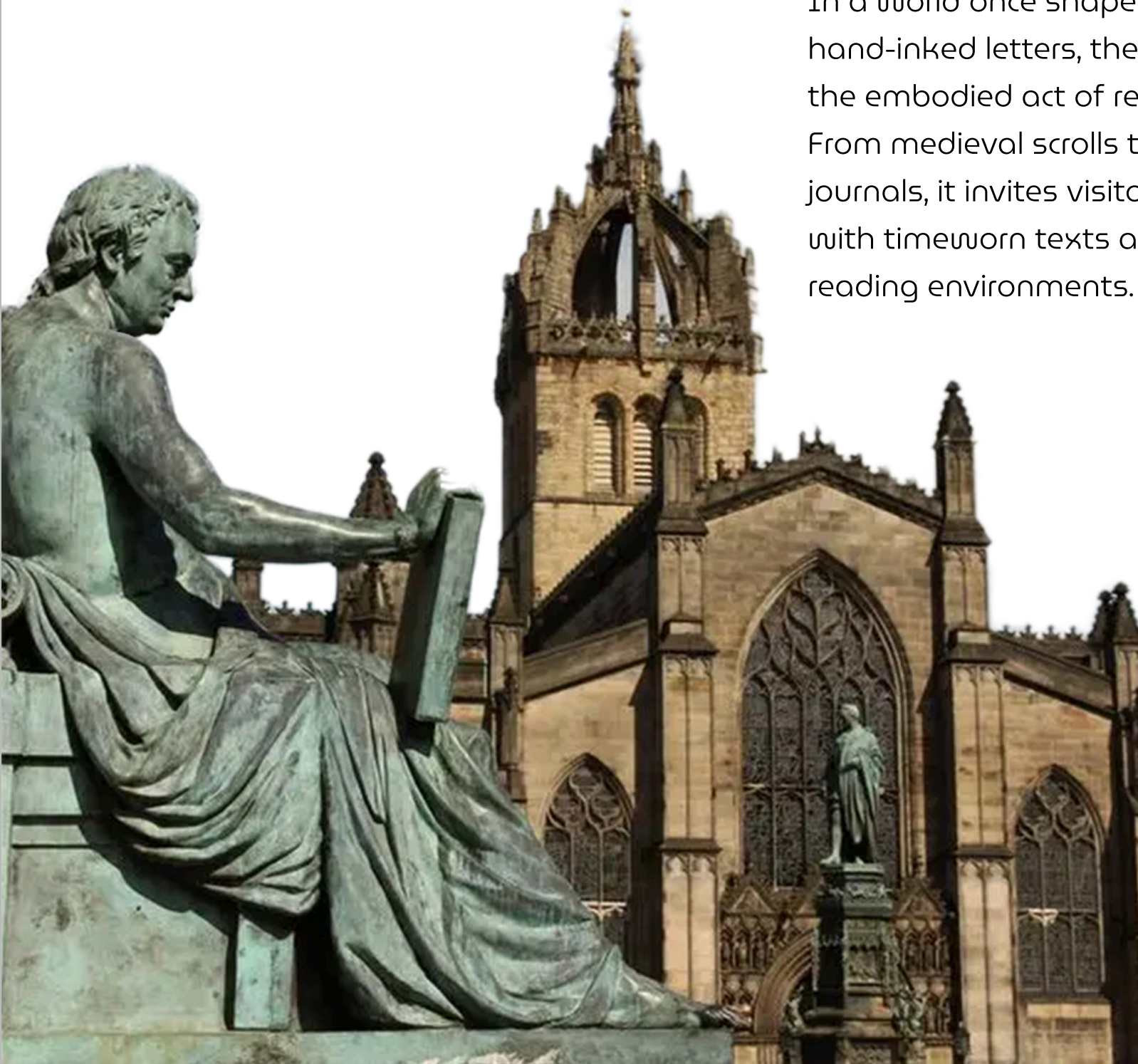
The Historic Library is a gathering ground for diverse generations and cultures. It weaves together the collective memory of Scotland's clans, immigrants, scholars, and dissenters—offering a place where local and global identities meet through stories.

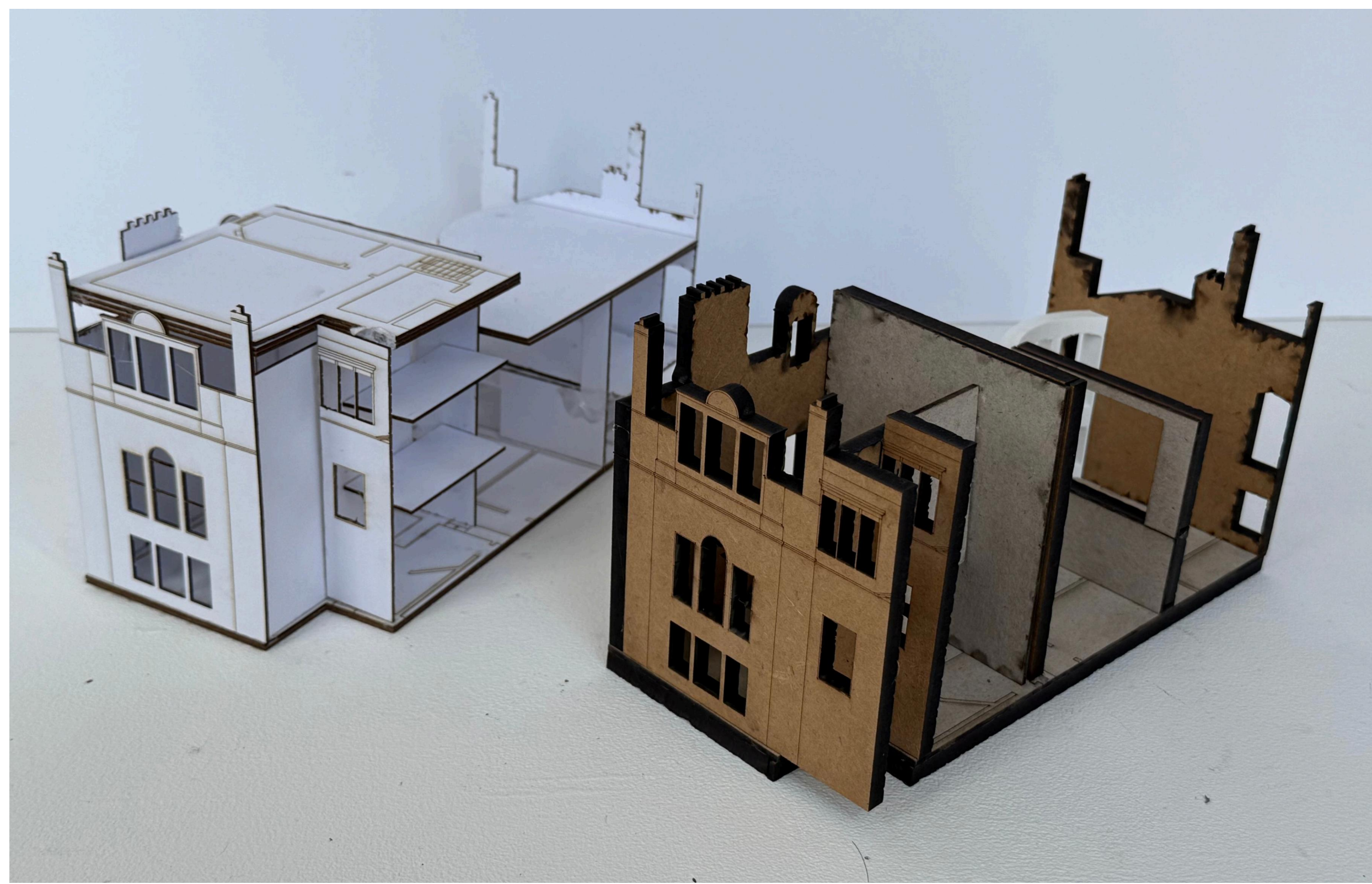
3

Living Archive

This library does not aim to preserve knowledge in glass cases, but to activate it. Marks left by former readers—annotations, repaired spines, old library stamps—are not flaws but threads in a living archive, connecting contemporary users to centuries of intellectual labor.

4



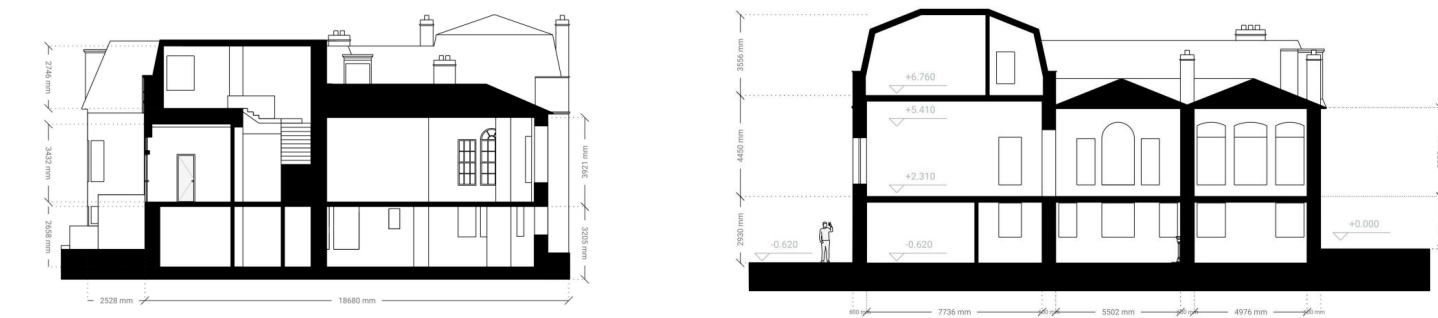


Two Initial Sketch Models: An Exploration of Model- Making Materials

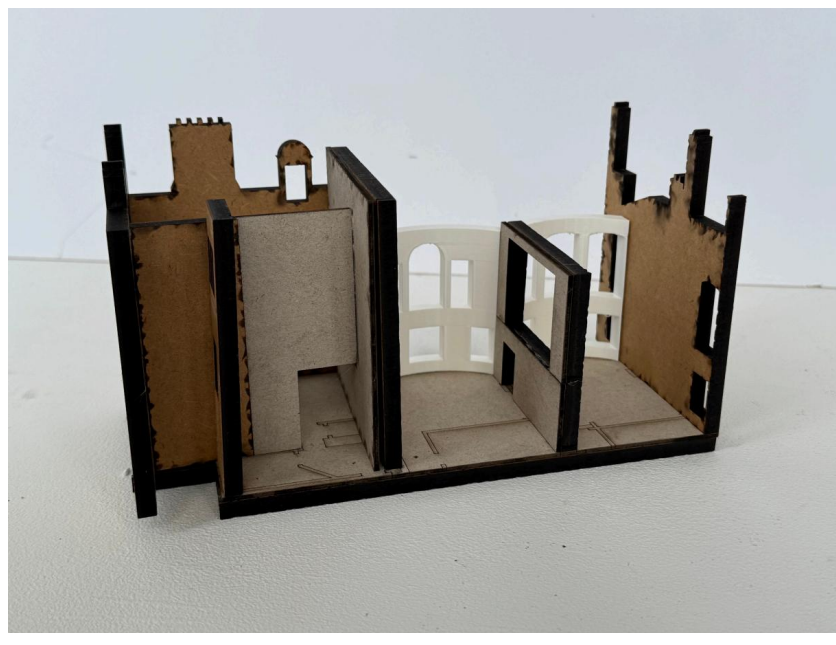
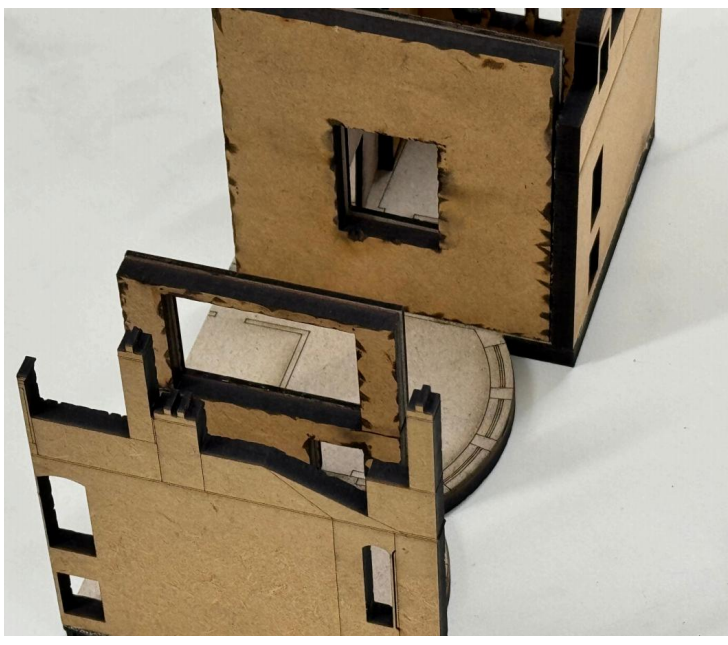
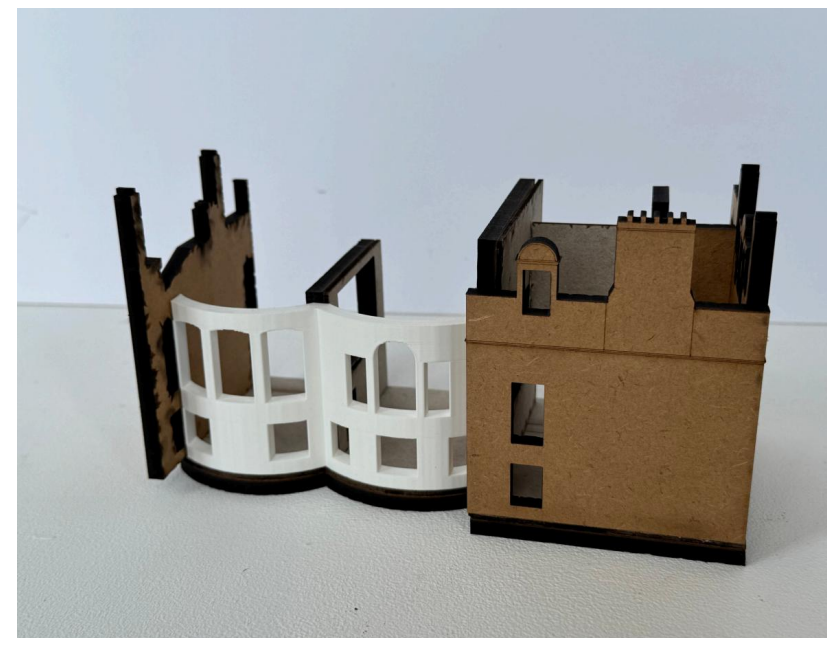
In this attempt, I experimented with three materials: 2mm white card, 5mm MDF board, and white PLA (PVA) filament for 3D printing, supported by laser cutting and 3D printing techniques. The outcome was two sketch models that provide an initial sense of the physical form.

The central atrium space introduces a sense of transparency, which is worth preserving and further developing. However, the construction of the roof structure presented several challenges during the initial making process, suggesting the need for further calculations and iterations to improve its stability and spatial coherence.

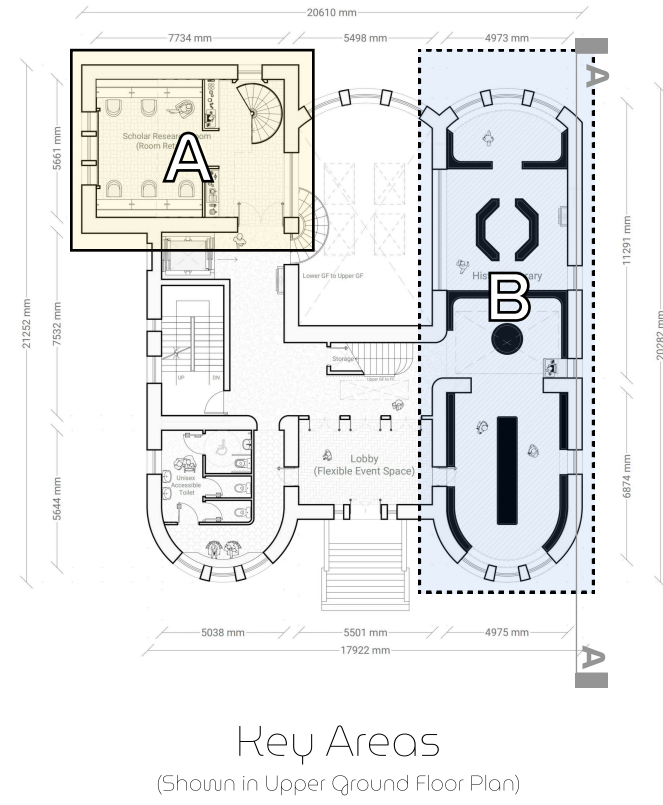
When compared with the previously developed sectional drawings of the building, the physical models allowed for a more intuitive assessment of spatial rhythm and vertical relationships. This comparison revealed a compelling opportunity—a breakthrough moment—that elevated the spatial narrative beyond initial expectations.



Existing CAD Set Sections



Processes



In the development of model-making, I propose to create an L-shaped sectional model for the following reasons:

The primary focus is on two key spaces—the retained room, designed as a scholar research space, which features a distinctive mezzanine allowing for vertical visual interaction within the space; and the historic library, linked seamlessly to form an elongated spatial configuration with considerable depth.

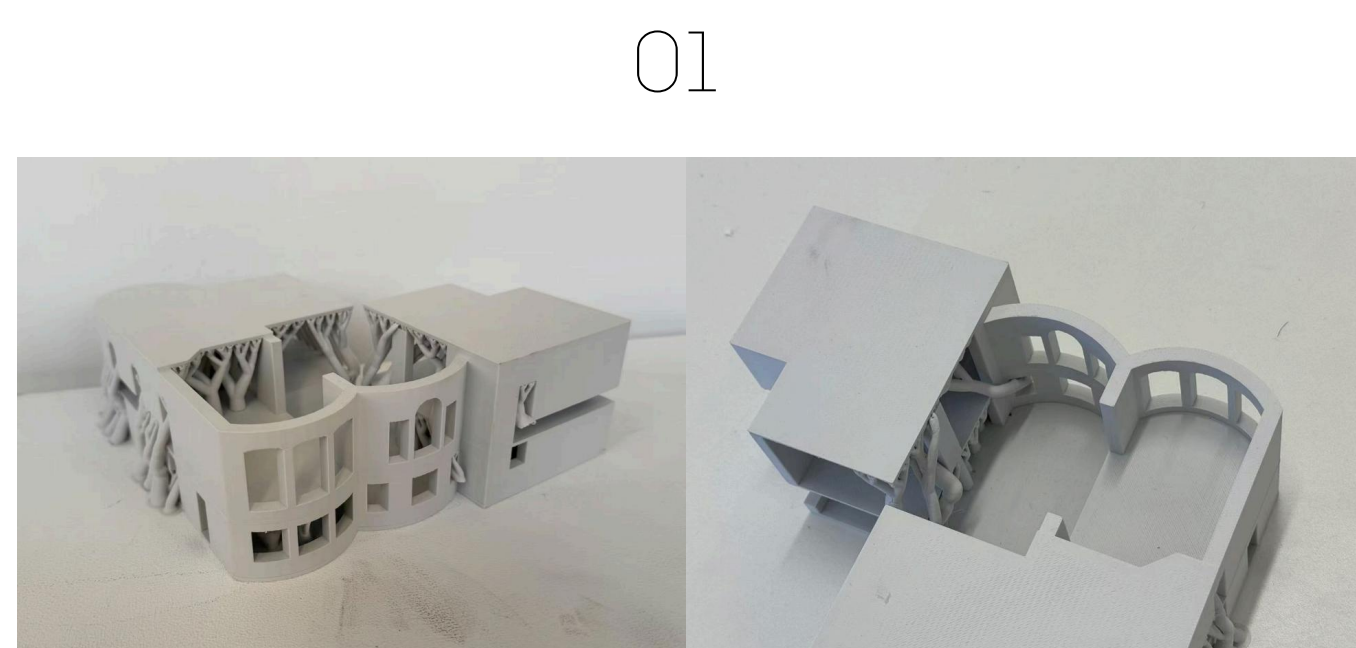
Both rooms are rich in character and merit detailed representation. Since they are located on the same upper ground floor level, the L-shaped sectional model offers an ideal format to capture this spatial relationship, while also showcasing the expressive atrium space at the heart of the design.



Section A-A

Thoughts: Final 1:50 Modelmaking

Building on earlier model-making experiments, this iteration explores an L-shaped sectional model with a detachable roof, enabling multi-angle observation and spatial exploration. By limiting visibility through partial sectional cuts, the model reveals only fragments of interior spaces at a time. This strategy introduces a more intimate and dynamic mode of engagement, offering an alternative to conventional static sectional representations.



Initial 3D Printed Prototype
(Using Tree-like Supports, Scale 1:100)

02

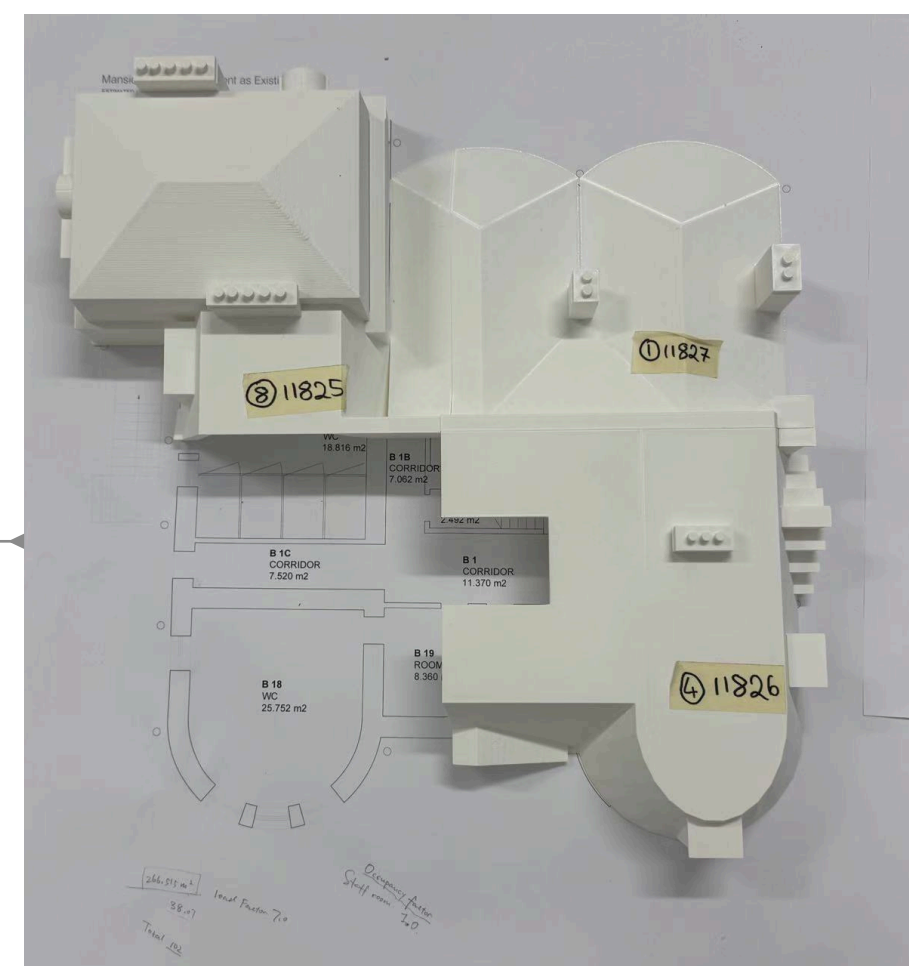


L-Shaped Draft Model with Roof, 1:100



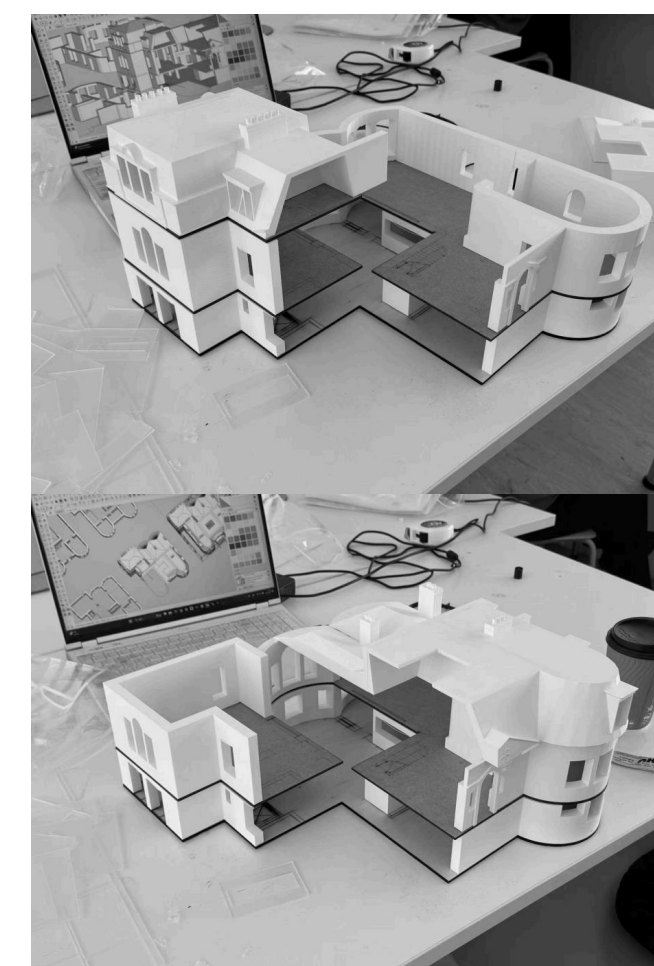
Fragmented View

03



3D Printed Roof, 1:50 Final

04



Detachable Roof Modules Allow for
Display at Different Angles.

Final Resolution

Large Scale 1:50

