

Tron Kirk Music Library

This project creates a sophisticated and multifunctional public music library, whilst preserving and exhibiting the remarkable existing architecture of the historic Tron Kirk; a place in which music and history have blended together for centuries.

Explored through model-making, the concept of an independent interior structure within the Tron Kirk showed the most potential. It protected the existing building structure, while providing an insulated interior envelope that allowed complete control of acoustics, lighting, heating and cooling in the large volume. The design encourages visitors to sequentially enjoy all aspects of the library, i.e., someone visiting the music practice rooms might discover the narrative of the Tron as they journey between the layers of the existing fabric and the new, contemporary functions within the spaces and vice versa.



Initial thematic mood board.

Site Context:

The Tron Kirk holds significance in the city's socio-cultural past: the church once stood as a communal meeting-point in Edinburgh's centre for festivals, such as Hogmanay. The Kirk is notable for its historic c.17 hammerbeam ceiling and Marlin's Wynd – Edinburgh's oldest excavated street. These important historical aspects are maintained and highlighted within the design.



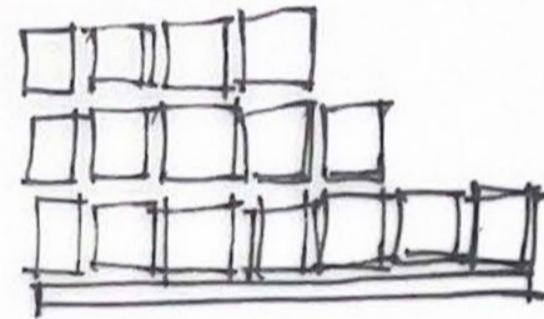
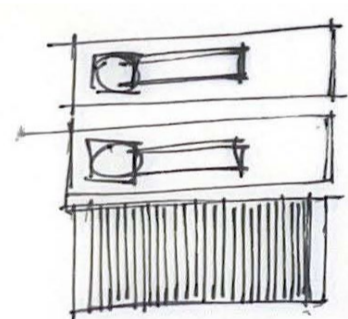
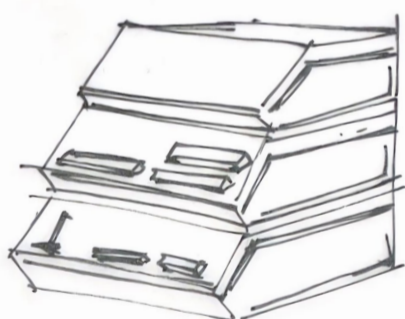
The Tron Kirk



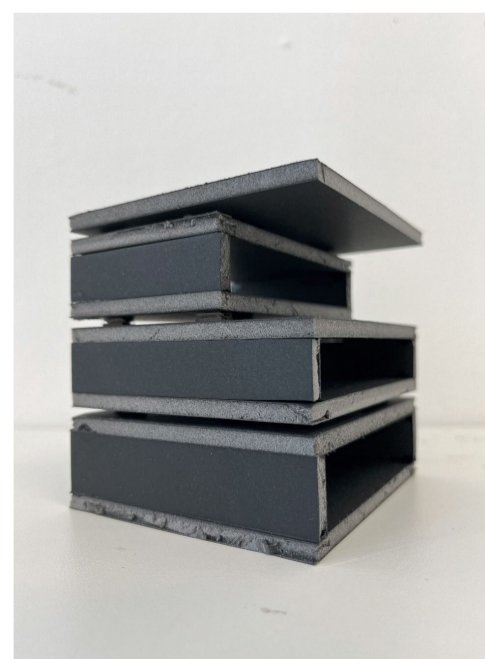
Existing hammer-beam ceiling



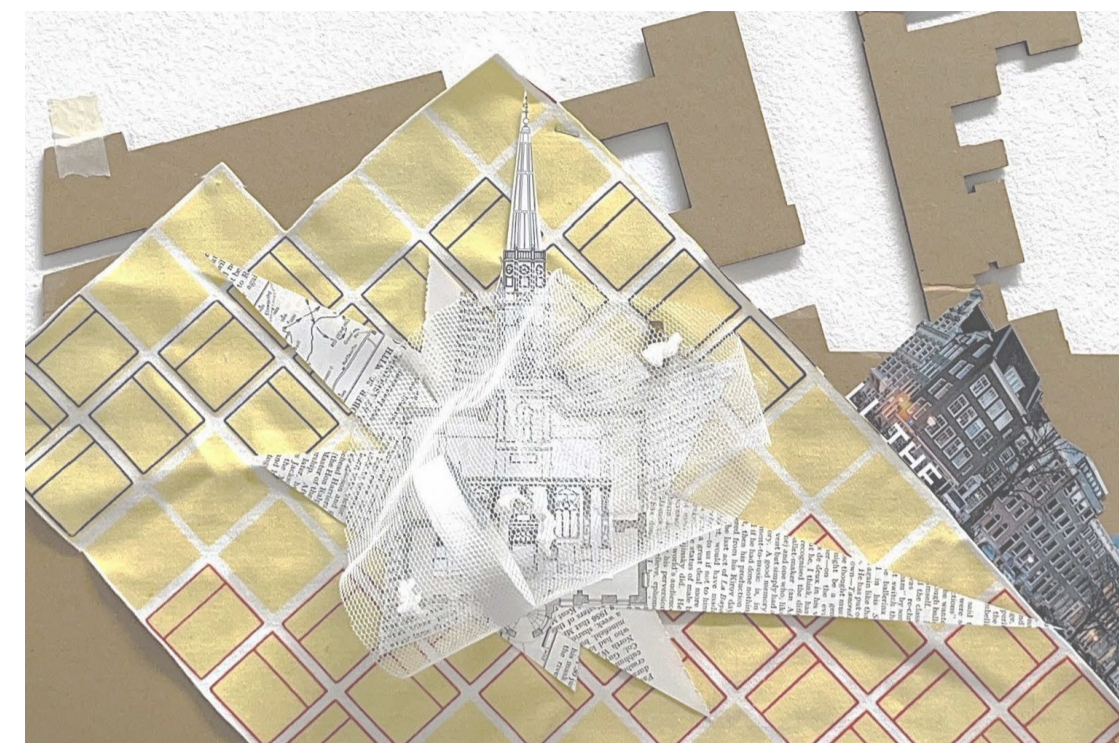
Existing interior stained glass



Initial concept sketches of the interior structure inspired by 1970s/80s solid state amplifiers.

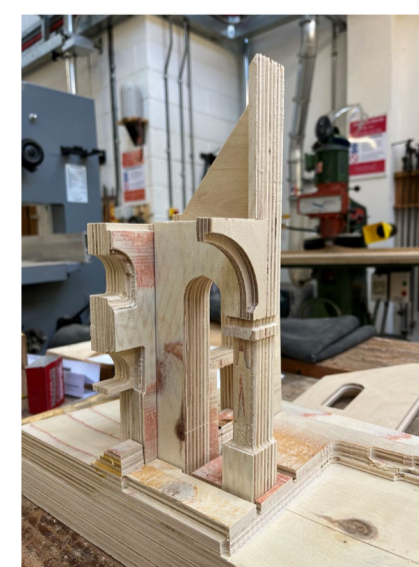
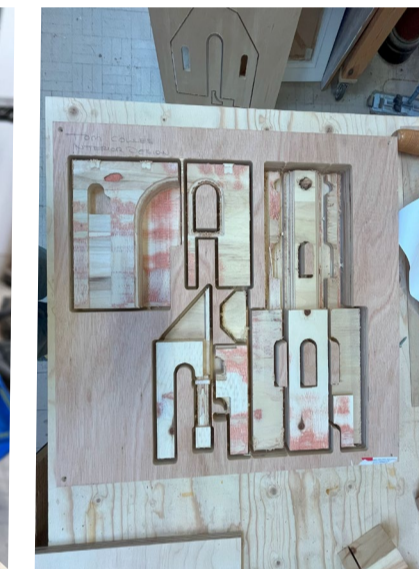


Concept model of the interior structure using cardboard and foam board. 1:100



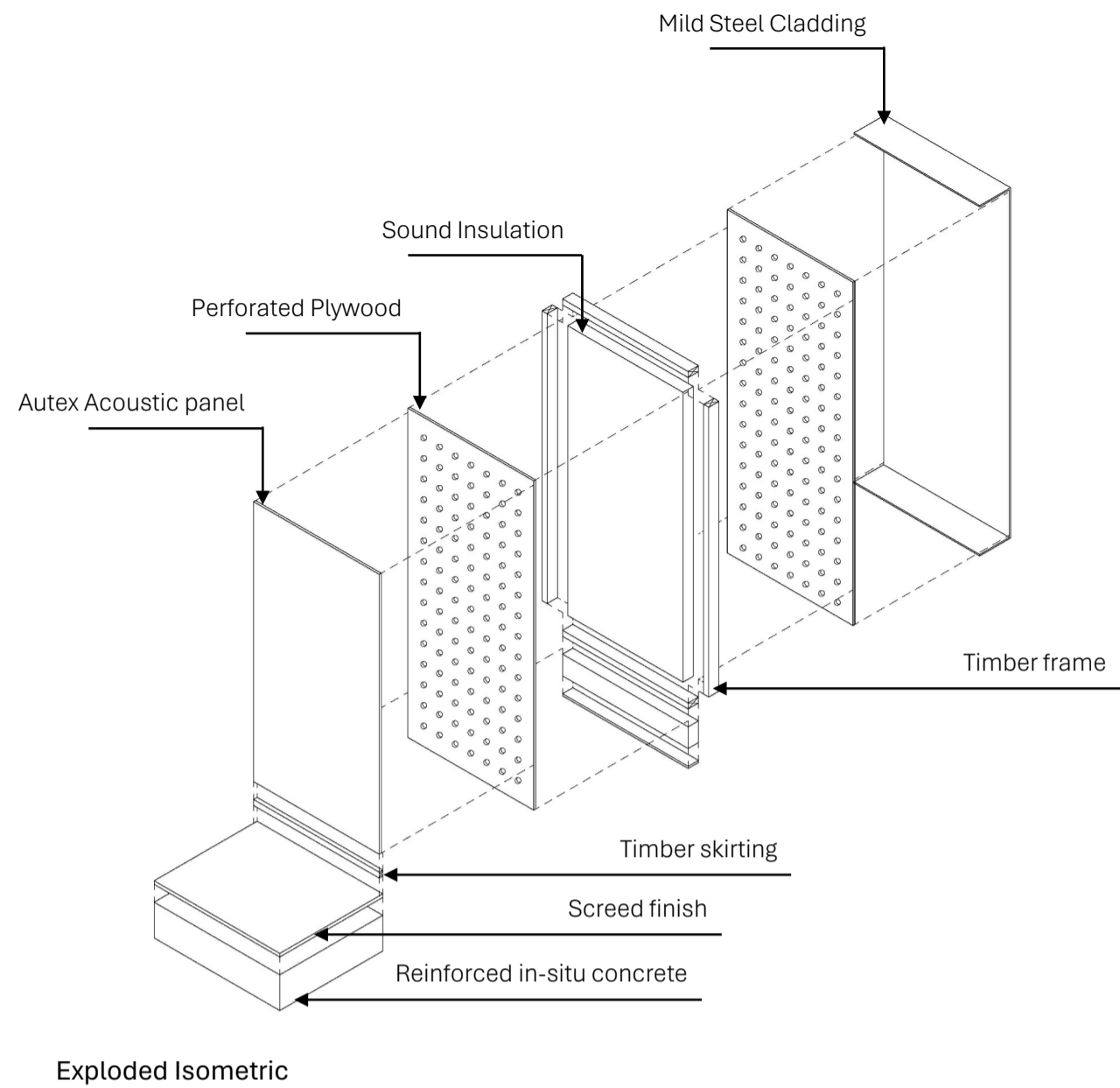
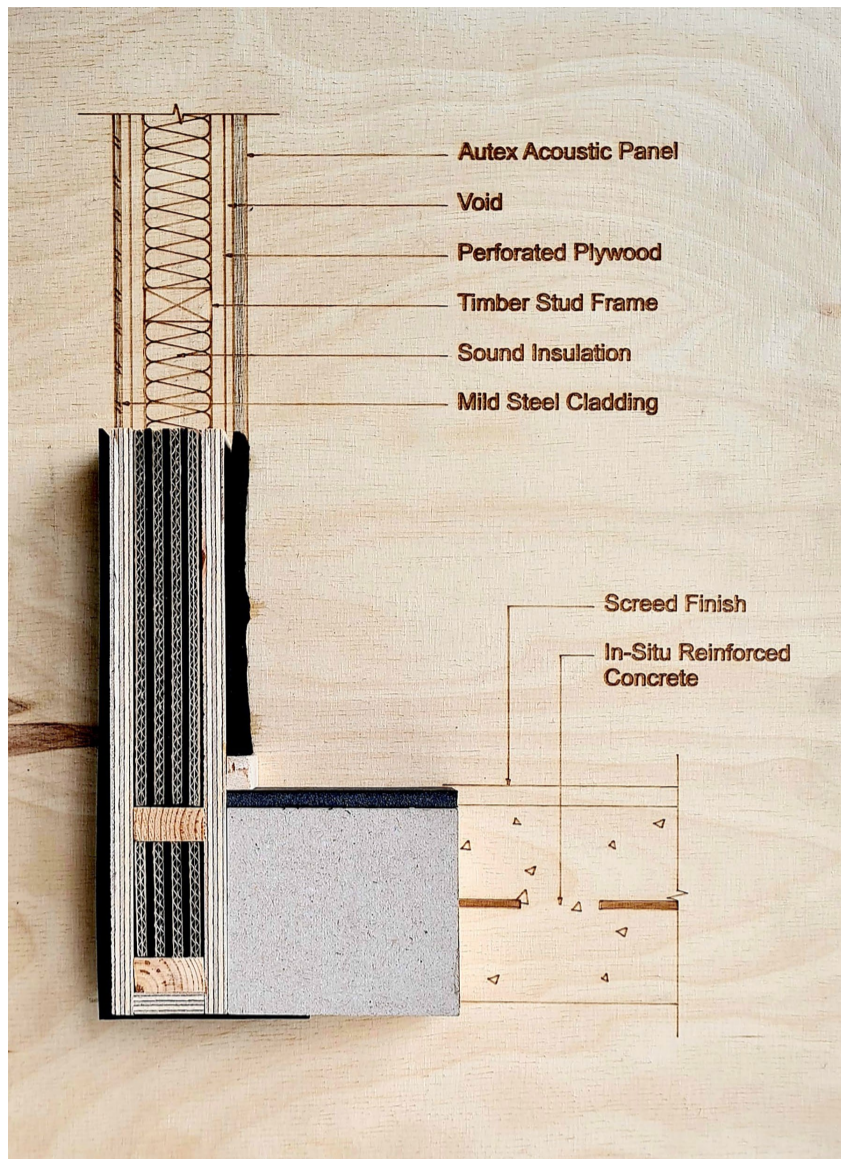
This concept model/collage is a physical representation of the wider influence of the Tron library on the city, demonstrating community, collaboration, centrality and protection.

CNC Model Making



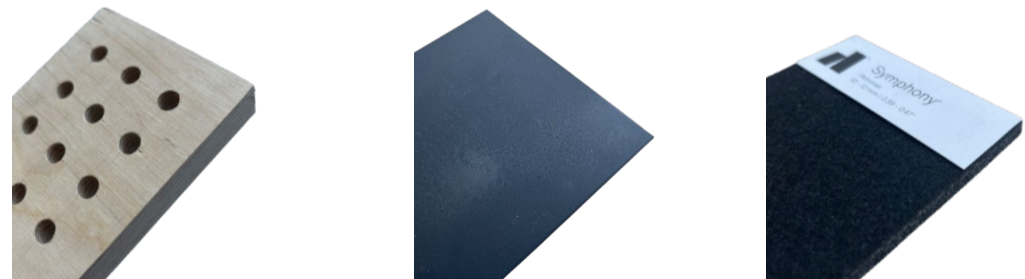
To translate the design into a physical model, I chose to use plywood and the CNC machine for the exterior and existing walls of the Tron Kirk. From this, the details and character of the brickwork and archaeology below are most represented. The outside of the model is clad in black card with minimal exterior details to draw focus onto the interior of the model, and loosely reflect the dark nature of the exterior of the Tron Kirk.

Detail Drawings

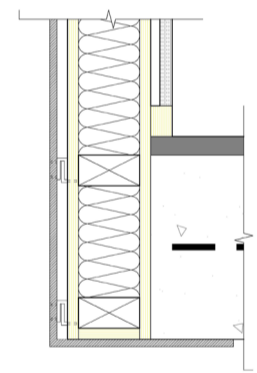


1:5 Detail section model – plywood, pine, felt, card, and balsa wood.

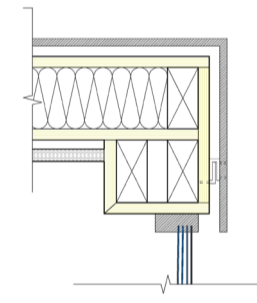
Materiality



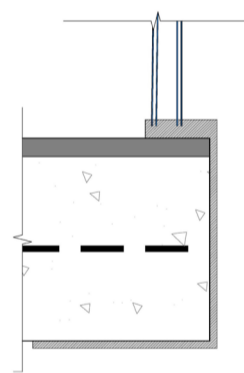
18mm Perforated Plywood 2mm Mild Steel Autex Acoustic Panel



Detail A
Wall to floor joint.

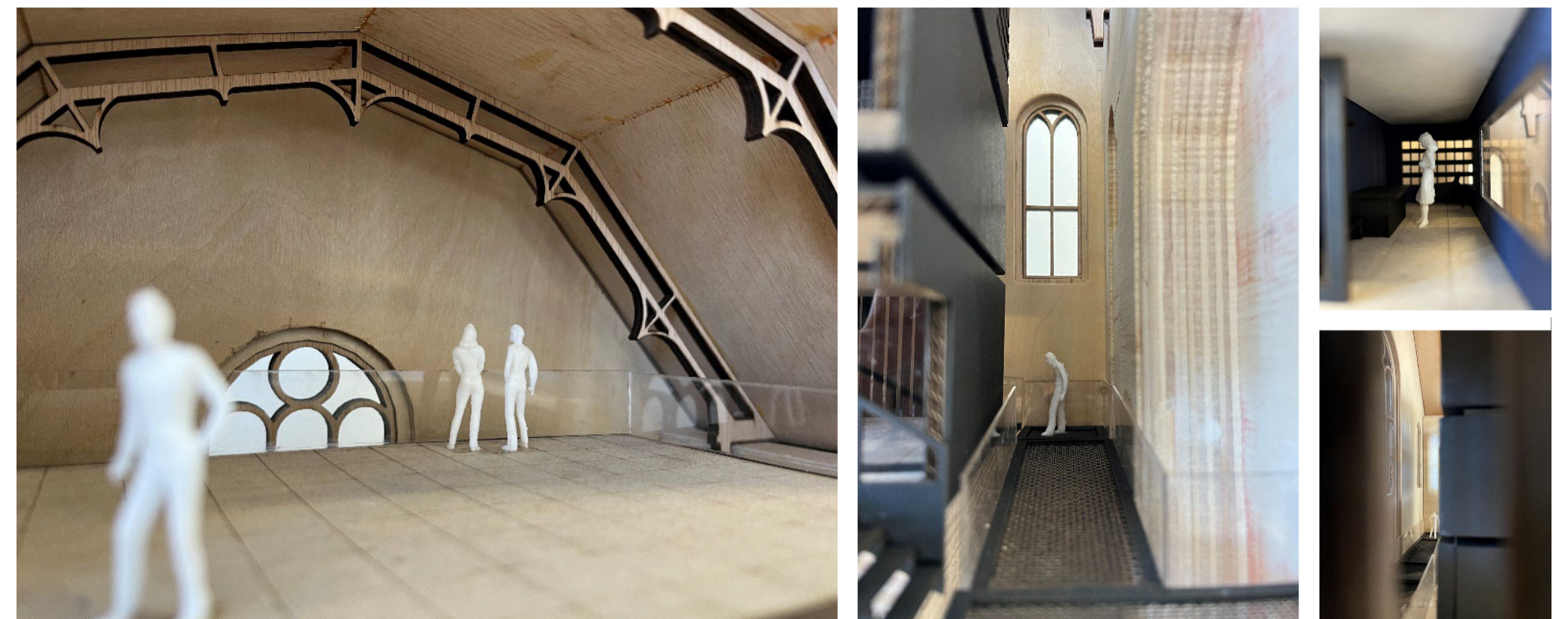


Detail B
Ceiling to window joint.



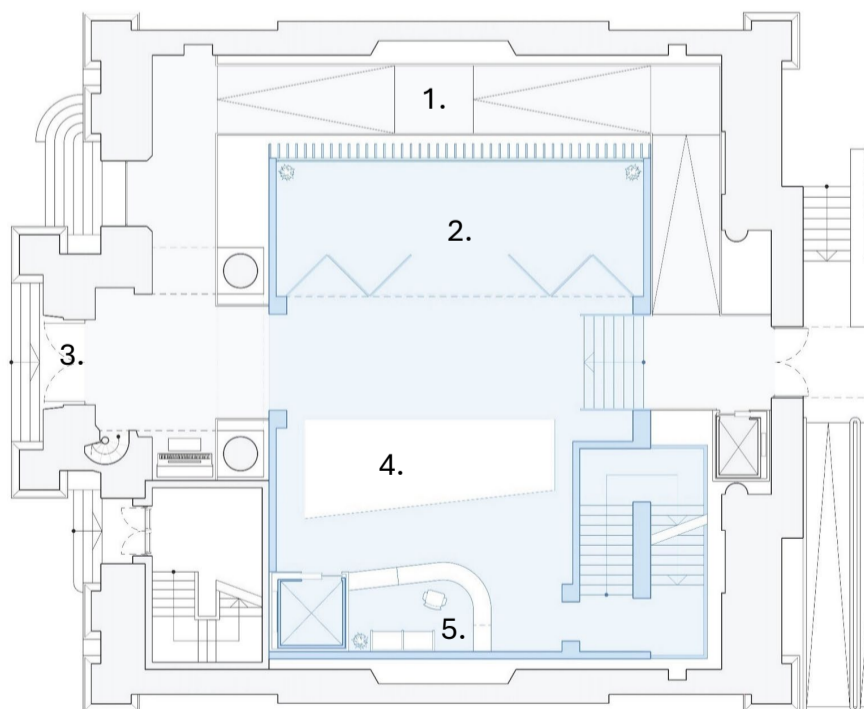
Detail C
Floor to window joint.

1:50 Sectional Model

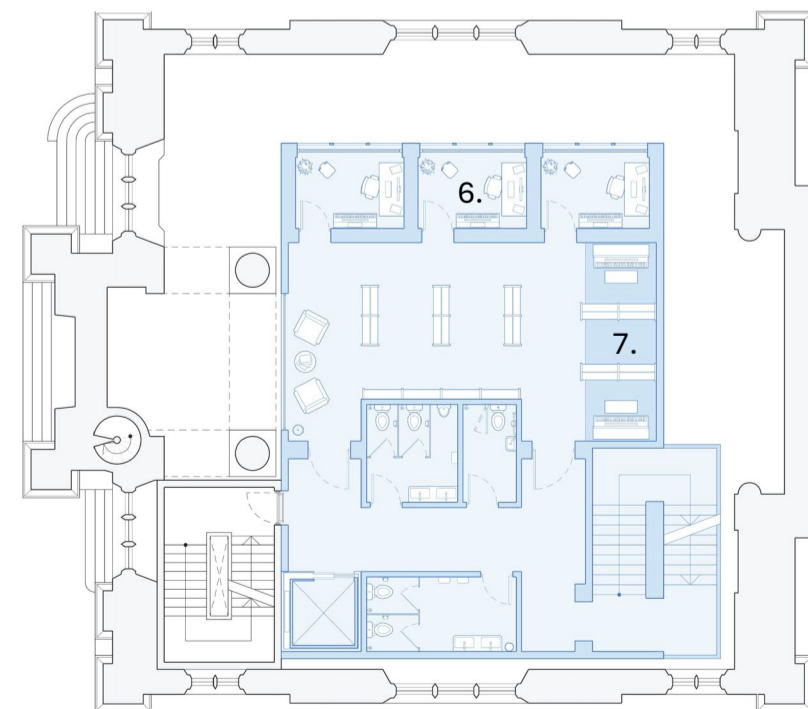


1:50 sectional model made of plywood and black card. The plywood is representative of the historic stonework still on display at the site. The black card represents the new independent structure of the library in the interior. The two materials display a contrast between the traditional building shell and the contemporary interior intervention, as well as a harmony between the two layers.

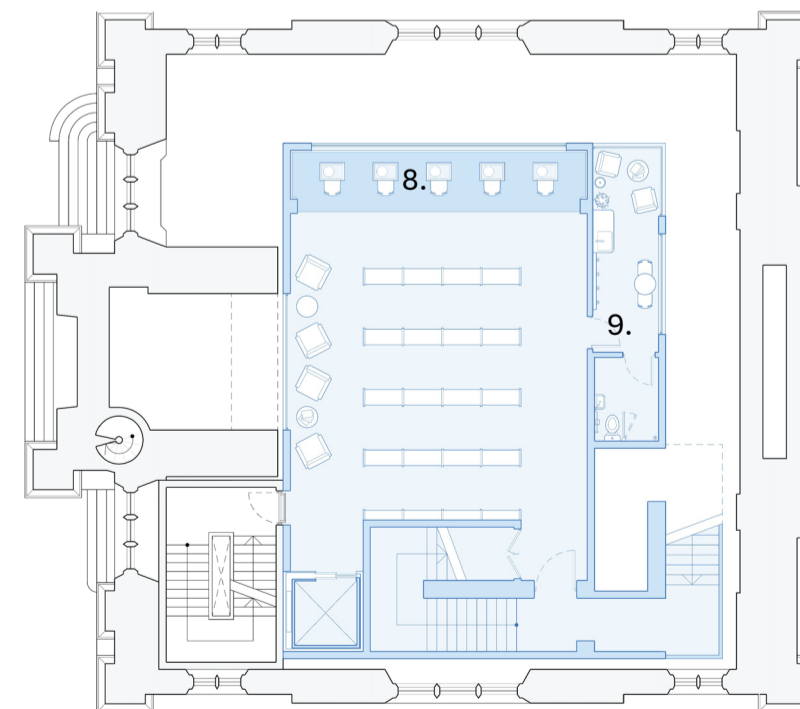
Orthographic Drawings



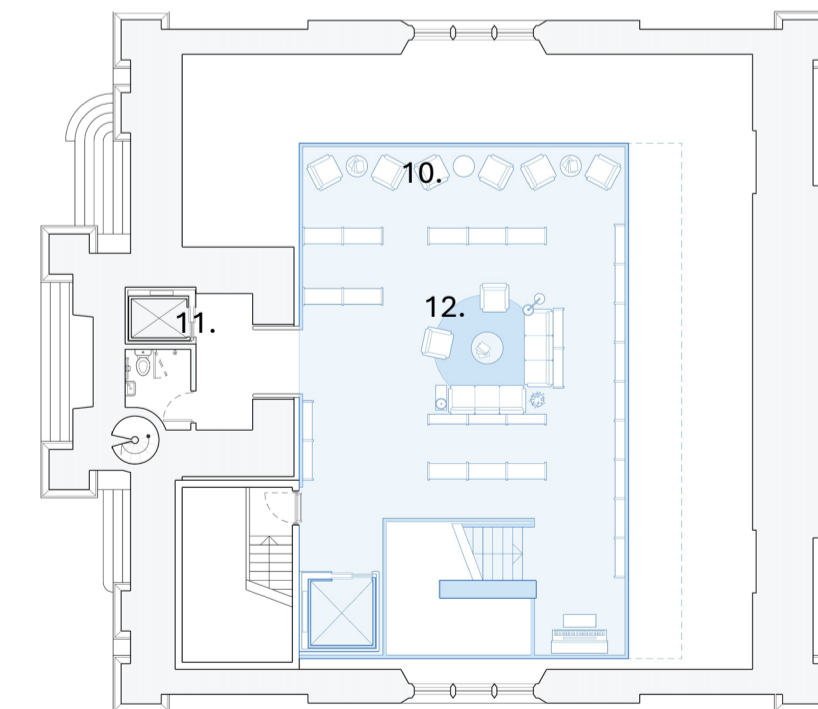
Ground Floor Plan View
Multi-use space and directory.



1st Floor Plan View
Practice rooms and instrument library.



2nd Floor Plan View
Audio library and staff space.



Upper Mezzanine Plan View
Social and collaborative music space.

- Legend:
1. Historic walkway
 2. Multi-use space
 3. Main entrance
 4. Window to Marlin's Wynd
 5. Reception
 6. Practice rooms
 7. Instrument library
 8. Audio library
 9. Staff space
 10. Social seating area
 11. Elevator to historic tower
 12. Music lounge

