

# TREVEN

## HELPING THE HIDDEN HOMELESS IN CORNWALL

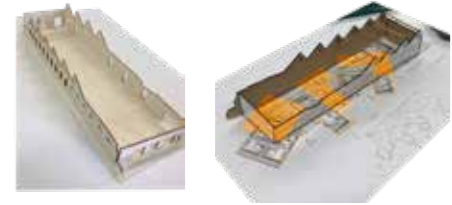
TREVEN - MEANING HOME, ORIGINATING FROM KERNOW

Social injustice of Homelessness - The issue of homelessness is a deeply rooted show of social injustice. Highlighting social inequality, barriers in opportunities, exclusion as well as basic human right violations. At the beginning of 2023 at least 271,000 people in the UK were reported as homeless, not accounting for the hidden homeless, as these individuals are hard to identify and go on undocumented. Homelessness is an issue that has risen by a factor of 74% in the last decade, and is only going to increase further without a serious solution to help the vulnerable people affected. In this project Treven is used as a stepping stone to allow families to reside in accommodation as well as build momentum of skills and regain confidence to then live a life without homelessness affecting them again.



### Brief

To provide temporary accommodation, coupled with specialised support to help individuals regain stability. With a sustainable focus on using pre existing, second hand or donated materials. Treven will also be a community space to help families feel included in a community that helps them create a brighter future.



### Who?

Treven is a space for homeless families. It will accommodate both adults and children. The most affected groups are young families and individuals with physical or mental health issues. Where Treven will accommodate for these and provide support.

### Where?

Camborne and the wider area of Cornwall presents itself with issues of homelessness being named one of the poorest towns in Cornwall.. Camborne included itself in the townscape heritage initiatives program which credits historic buildings and defends the importance of the remaining buildings to prevent decline in historic interest connecting the area. Camborne also is in an area of deprivation, yet still in an area of historic interest and surrounded with lovely Cornish scenery.



Sun path    Projecting views    Noise levels



Northlights building in use from 1831.

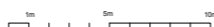


Northlights building in disrepair.



1:500 scale model showing the contours surrounding the site.

## SECTION AA



## HOW CAN DESIGN CONTRIBUTE TO THE ISSUE OF HIDDEN HOMELESSNESS AND DISTIL THE ESSENCE OF HOME?



# CONCEPT

Extruding micro homes elevated on stilts to accommodate for interior and exterior living.

Protect, support and accommodate for families that are affected by homelessness. - Rationale



## Why micro living...

Micro-living maximises functionality and minimises space, featuring compact layouts, multi-functional furniture and clever storage solutions. Some benefits of micro-living include reduced environmental footprint due to lower energy consumption and material usage and affordability in terms of construction and maintenance costs. To create more private spaces my design will include bespoke bed pods that will fit into the space including storage privacy and cosiness.

## Indoor outdoor living - homes on stilts.

Balancing interior space with outdoor connections is crucial for well-being. Trevn fosters this balance, encouraging outdoor interaction and socializing. To counteract the feeling of being trapped that homelessness can cause, Trevn's extruding dwellings help families feel connected to the outdoors while providing protection. This creates a sense of freedom and security.

# COMMUNITY



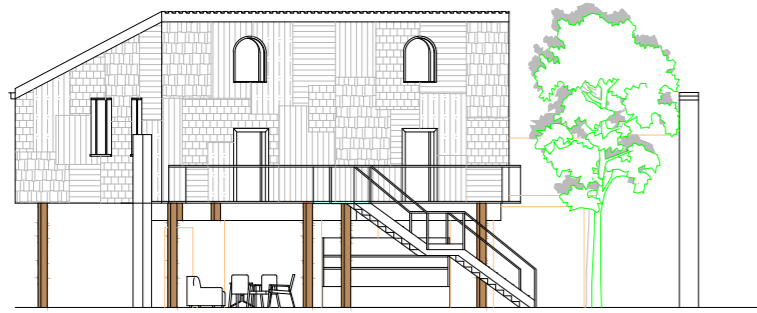
# EXTERIOR



# SECTION BB



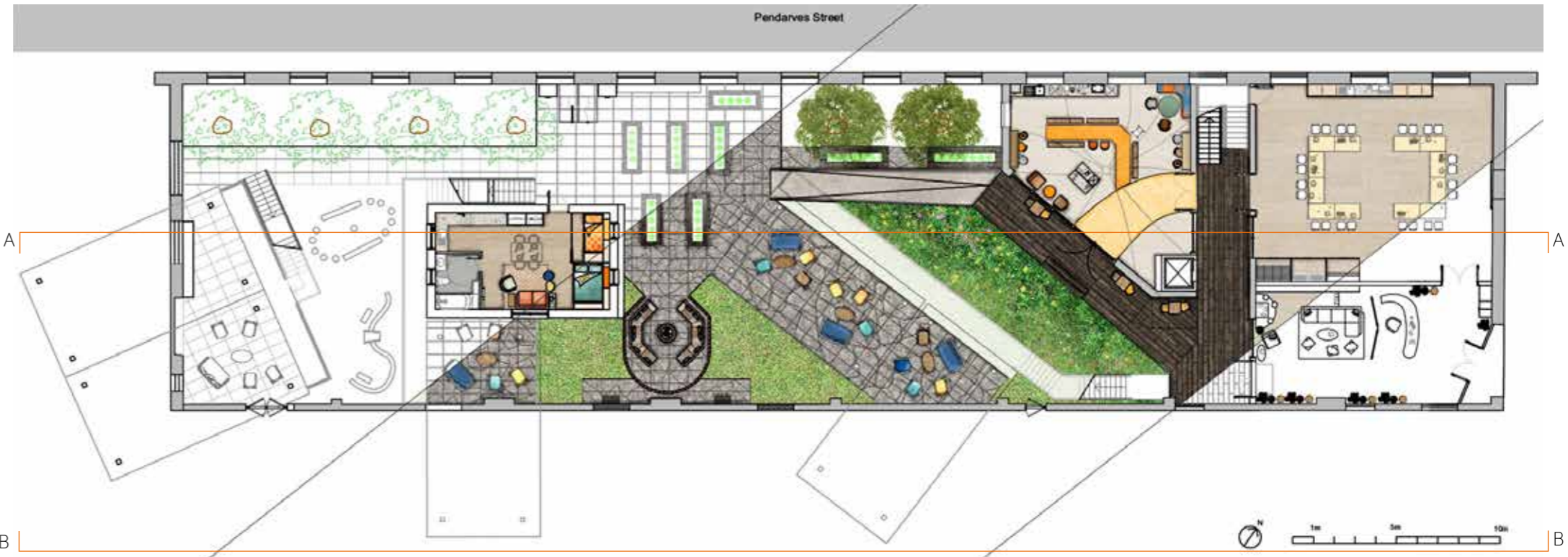
# SECTION CC



Treven's community spaces cater to the needs of its users, featuring a library, community hall, and common room. The library adds to the homely feel and can also serve as a consultation space with acoustic barriers. The flexible community hall accommodates various activities such as workshops, exercise classes, indoor play, a cinema, and a homework club. It includes ample storage, like a pocket kitchen that doubles as a storage unit. The common room building in Treven offers facilities for the community, including washing and laundry units on the first floor and a social space with a kitchenette and refreshments. It also features picturesque views of the wild garden. Patchwork themes are present throughout this project, particularly in the exterior materials. These materials will be gathered, donated, or scavenged to produce the patchwork look. This is to stress Treven's sustainable initiatives, as well as making the best use of materials and resources that have previously existed.



# GROUND FLOOR PLAN



# FIRST FLOOR PLAN

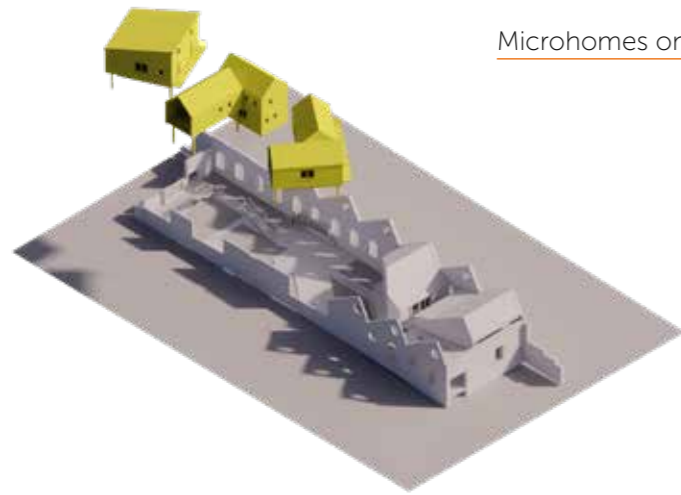


SECTION DD



SECTION EE

# STRATEGY



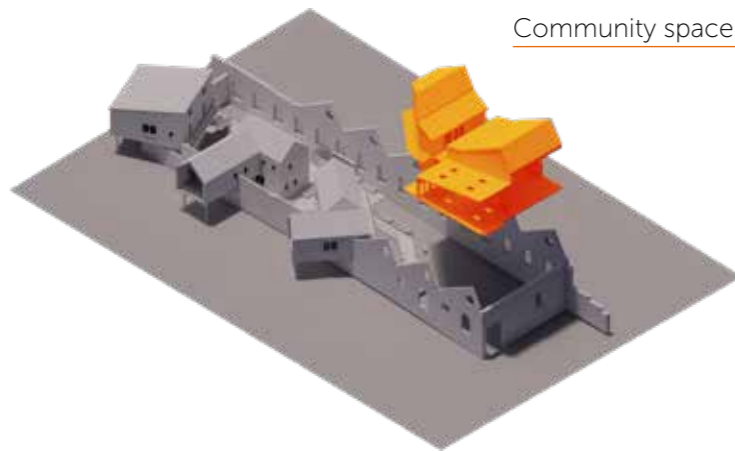
Microhomes on stilts

Micro homes on stilts encourage indoor and outdoor living, with protected seating spaces underneath. This design enhances views, giving families a sense of freedom and avoiding the feeling of enclosure by the host building's exterior walls.



Tree line protection

Tree line of birch or hazel trees for their ridged leaves that help to diffuse sound and pollution, as well as providing habitats for birds and other means of wildlife.



Community space

Community spaces at the entrance of the site that hold all of the facilities, community and indoor social elements to Treven.



UNDER THE MICRO HOMES  
GROUND FLOOR



VIEW INSIDE THE MICRO HOMES  
FIRST FLOOR



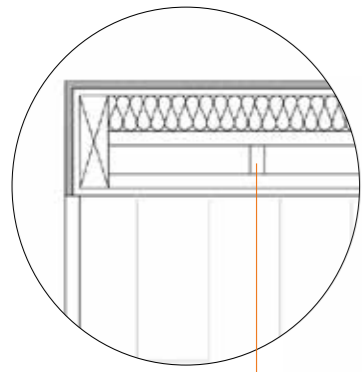
Axo conveying the relationship between micro homes and outdoor living.

Section FF showing the sectional quality of the micro home interior highlights a domesticated, homey atmosphere that conveys comfort and calmness. This is achieved through the use of natural materials, which enhance well-being and air quality. Given the limited space inside the micro homes, it is crucial to ensure the safety of families by avoiding harmful chemicals. A minimal yet effective warm colour palette will be used to furnish and finish the interior alongside pre-loved and recycled furniture to bring a lived in warming quality to the space. These elements aim to create a sense of home for the families sheltering at Treven.

## SECTION FF



# MICRO LIVING FLOOR PLAN



Timber battens

Sliding french doors

Railing



Double bed pod

Bunkbed Pod



Reclaimed & treated wood

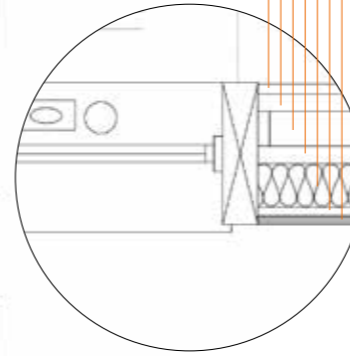
Sustainable linoleum flooring

Durat counter top

Sustainable linoleum tiles

## CONSTRUCTION OF WALL

- Hemp plaster board
- OSB sheathing
- CLT Timber frame
- Breather membrane
- Wool insulation
- Lining
- Outer cladding

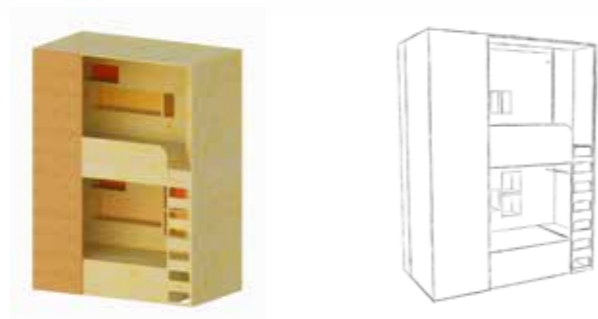


Shower head & bath tub



In order to limit embodied carbon emissions, locally produced materials will be used as part of the Treven project's sustainability priority. To ensure longevity and to survive wear and tear, it is also important to select natural materials that are both affordable and sturdy. Natural materials are optimal for enhancing well-being and air quality. Due to the limited interior space and the array of functions it serves, there will be a minimal pallet of natural materials with warm tones to infuse the space with a sense of homeliness.

Micro-living apartments will utilise bespoke bed pods for sleeping, doubling as cozy private spaces with blackout curtains. These pods integrate storage, lighting, and a wardrobe to optimize space efficiency.



2254

