




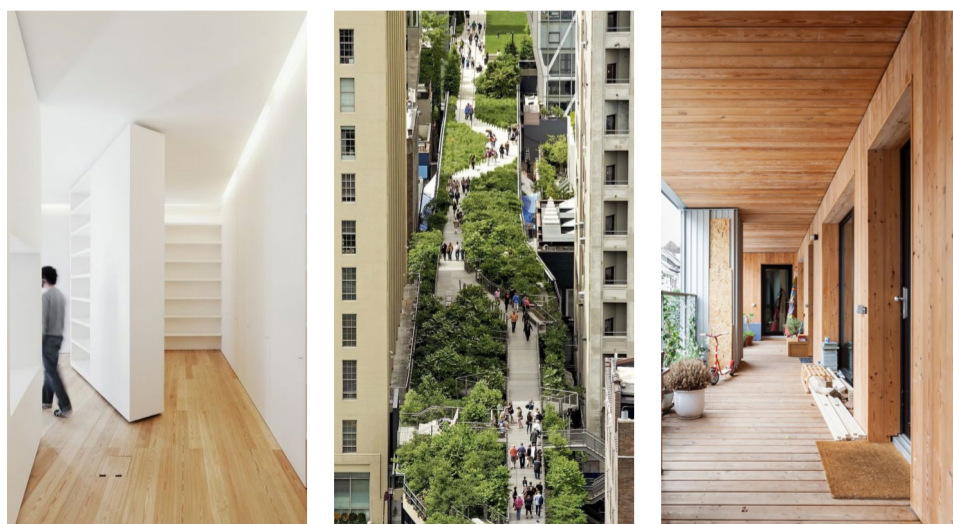
section a a Looking into the street from the west with the first floor street above, with the colourful apartment doors & window boxes providing that connection.

for all ages
intergenerational living
partnered with 

Our **traditional** solutions to ageing often consist of **isolating** those vulnerable members of our society, and not allowing people of all ages to interact and exist in one social environment. Adopting a **multi-generational** approach to co-living would allow people to keep living their lives to the fullest with enhanced **interactions** amongst all ages. Building more **diverse** connections amongst our ageing population to improve **well-being**, offer new **perspectives** and create a strong **community** will be key driving factors in finding solutions for our ageing population.

what?

For All Ages is an **intergenerational co-living** complex partnered with **Age UK**. Offering **advice**, a **retail** space, **community** space & **affordable** living, the scheme hopes to bring varying generations together.



who?

From young **families** to the **elderly**, the scheme aims to bring all ages together to help **combat** social issues like **loneliness & isolation**.

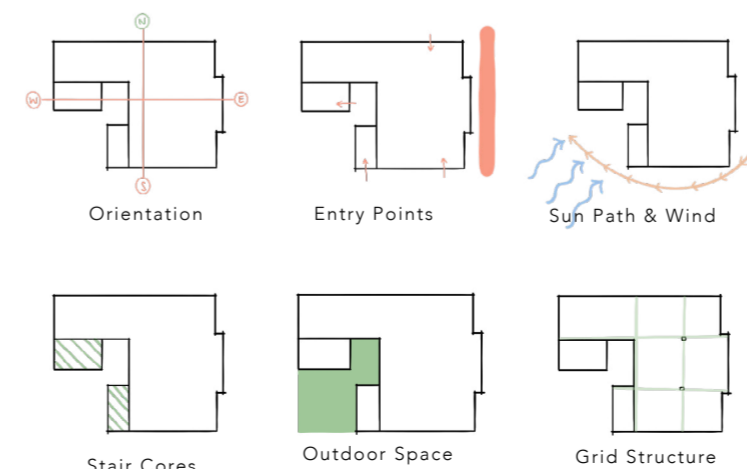


where?

Located in **Camborne**, where community spaces are significantly lacking, For All Ages hopes to bring this **much needed community space** back to the town.



The Basset Centre, Camborne



“We do not need special architecture for old people, we need the right architecture for all ages.”

- Matthias Hollwich



By 2030,
1 in 5 people in
the UK will
be aged 65
or above

55% of
adults in the UK
agree we live in
an ageist
society

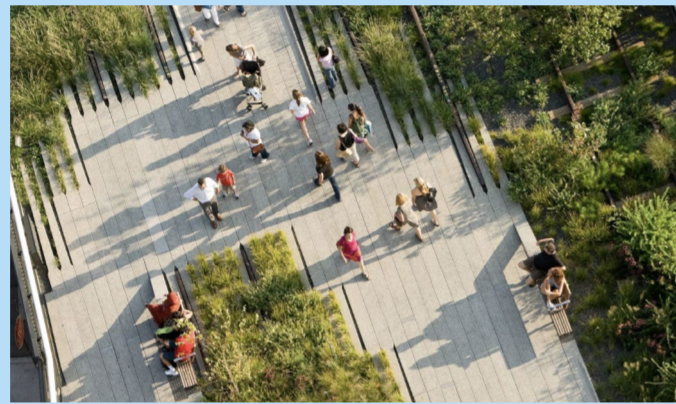
By 2050,
people aged
65+ will
outnumber
15-24 y/os



Choosing **density over luxury**, regarding the number and size of apartments, will help provide much-needed **affordable housing** for more people within the Camborne community, rather than only a few.

Encouraging interactions amongst all ages will help to tackle big societal issues including **loneliness** and **social isolation**, and improve our **opinions and overall understanding regarding ageing and older people**. Creating a space where **new and existing communities** can thrive and share **knowledge, resources** and **time** will all help to promote social sustainability.

Providing a scheme that can **adapt and grow** with each occupant ensures for a **long-lasting** space that will need little changes or improvements allowing a **sustainable community** to be built. The **inclusive** nature for all generations is a highlight in making the scheme socially sustainable.



the concept

what if there was an interior street?

An exterior streetscape is typically a place that acts as a **separation** between **pedestrians and vehicles**. It is also a place where people **gather, interact** and **pause** with parts for **playing, relaxing** or simply admiring the **surroundings**.

my approach

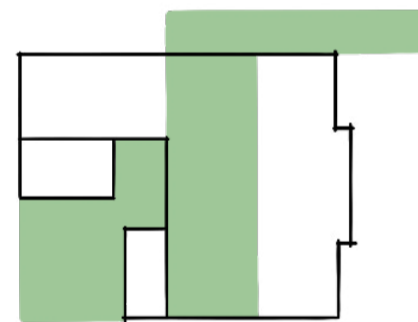
Taking inspiration from **streetscapes** and **pocket parks**, these **design moments** and spaces created will help to encourage **interactions**.

Bringing people of **all ages together** will further build upon the **community** and **intergenerational** aspects that the scheme aims to achieve.



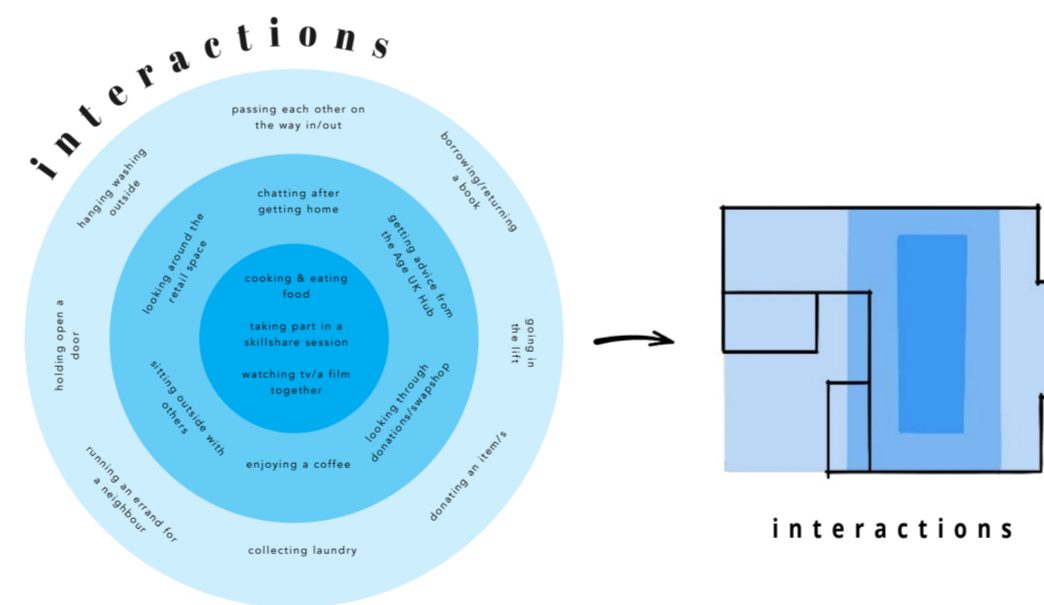
the entrance

When you enter the building you can find the Age UK helpdesk to your left & the street directly in front of you, with a wall of bi-fold doors, which open out into the garden, and voids above to let light in. Floor & wall graphics entice you in, along with the retail unit.

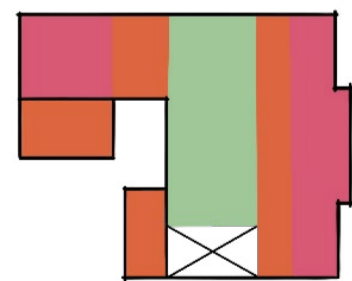


the street

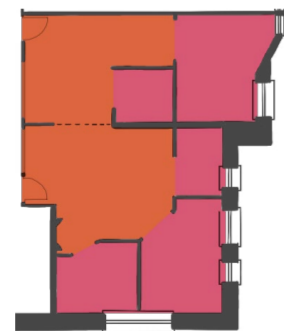
The public **streetscape** that runs through the centre of the site acts as the main spatial strategy. **Interactions** will occur the most here and will spill out into the **semi-private** adjacent areas.



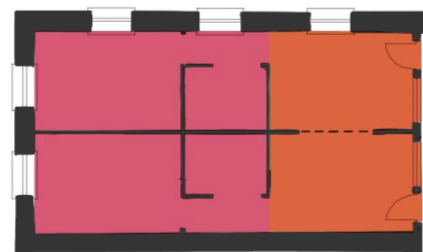
interactions



public to private



(family apartment)
 ■ shared & private ■
 (couples apartment)



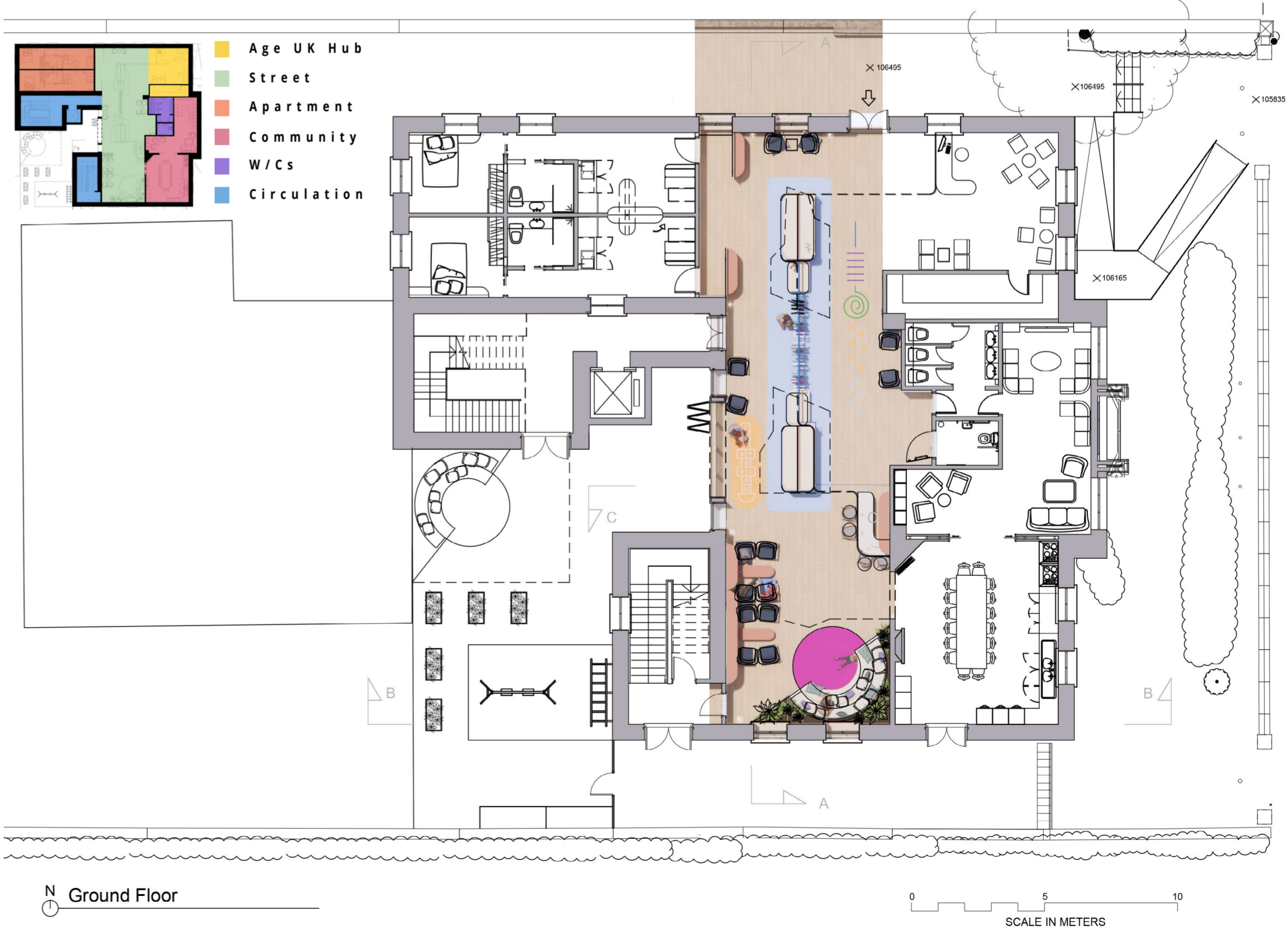
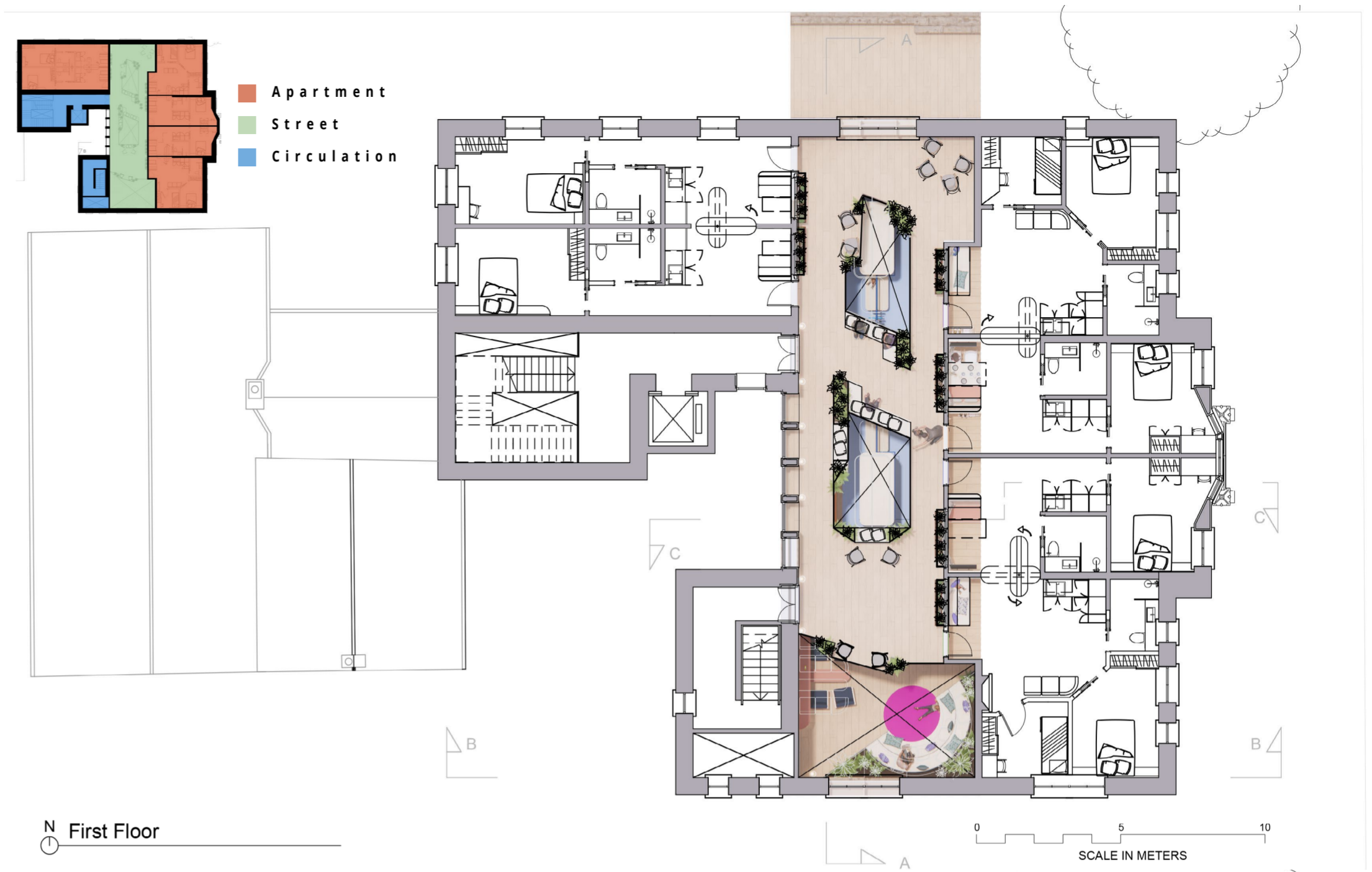
Within the apartment, this strategy continues with windows providing a **physical connection to the street** and the people within it. The pivoting shelving dividers (shown with a dotted line) create an opportunity for **living spaces to be combined**, further **blurring the lines between private and public spaces**.



tiered library seating

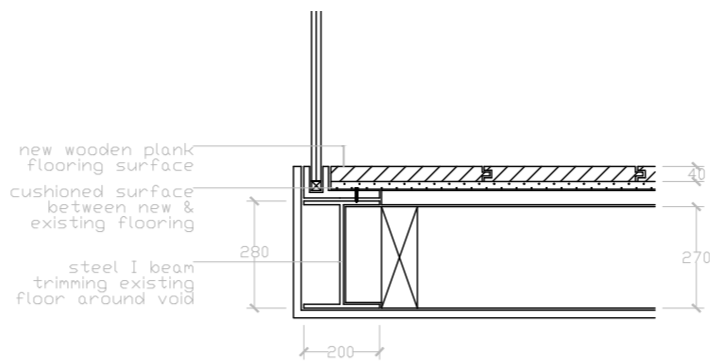
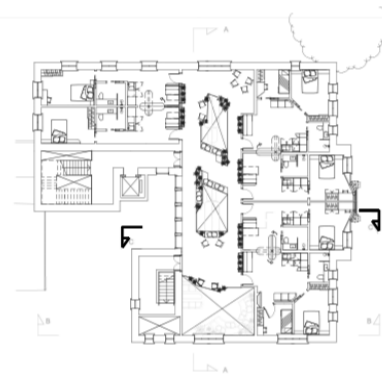
At the end of the street, you can chat with neighbours & friends on tiered library seating made from CLT or in comfy armchairs. Enjoy a book from under the seats with your kids, grand kids or neighbours while having a coffee too.



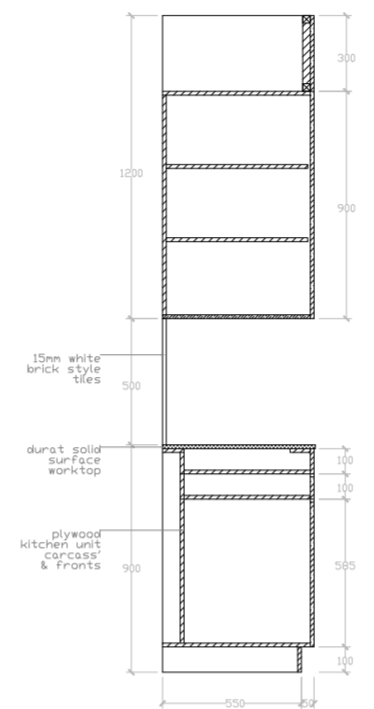




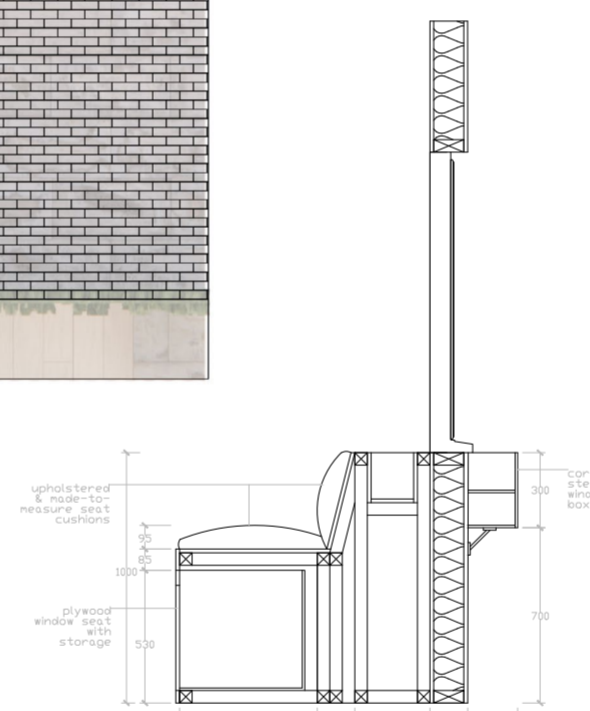
technical section



Flooring Void Detail



Kitchen Detail



Window Seat Detail



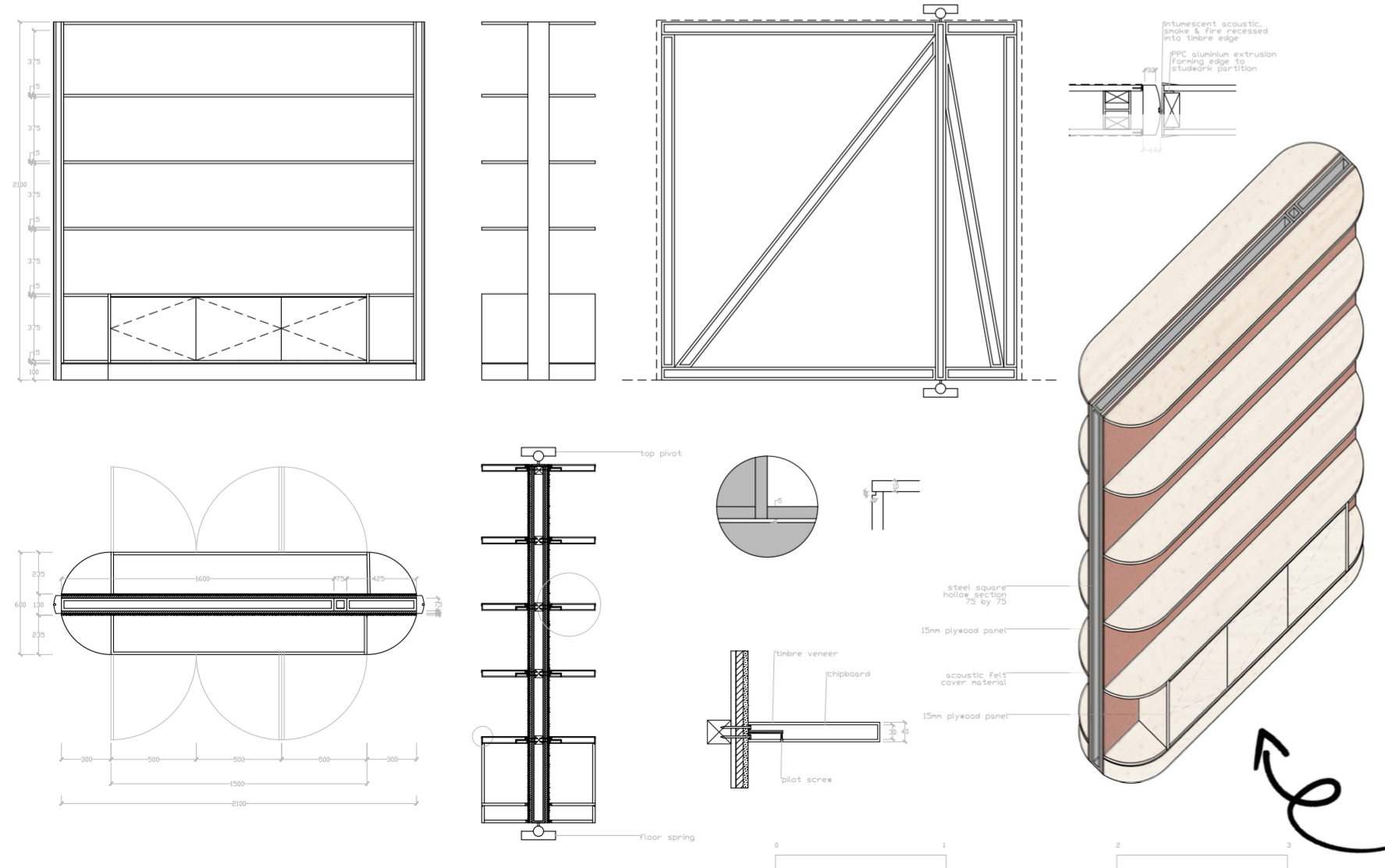
opened living space

When you enter the apartment, you'll find a waffle wall divider doubling as pegboard-style shelving, banquette style seating with a flip out table and pivoting shelving that acts as a divider between two apartments. Opening this out will create the opened living space, seen here, for residents to enjoy food together or simply spend time together.



the kitchen

The kitchens in the apartments are somewhat hidden from the open living space to create a more separated environment. Floor-to-ceiling cabinets, single cabinets & shelving make up the kitchen to ensure for maximum storage & functionality in the small space. The pivoting shelving adds extra storage space for the kitchen and general household items.



the pivoting divider

Within the apartments is a shelving divider. It acts as a wall between two apartments which can be opened to create an open living space. This device encourages interactions between two families, couples etc to help combat the social issues explored within the project or make a bigger apartment for a bigger family to enjoy. Having shelving and storage makes it a functional piece of furniture, maximising the space within the apartment.



the first floor street

Coming up the stairs at the end of the street brings you up outside the apartments. Corten steel planters, birch plywood bench seating & armchairs surround three voids looking back down onto the ground floor, and corten steel window boxes & framed windows give the apartments a connection back out onto the streetscape.



- 1. Domus Vivo Floor Planks
- 2. Shelving Back Fabric
- 3. Durat Worktops

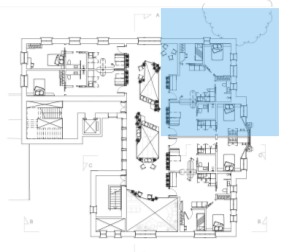
- 4. CLT Partitions
- 5. Clayworks Plaster
- 6. Exiting Stone Walls

- 7. Core Graphics Colour Palette
- 8. Honey Pendant Light
- 9. Bellhop Wall Light

Promoting **healthy living to age well** is a key part of the scheme, so ensuring material choices have **no/low VOCs** will help with **air-quality, acoustics** and **insulation** to create a **low-impact, good-quality living aesthetic**. Uncovering the **existing stone walls** will show the **history** of the site and create **strong character** for the rest of the palette. Choosing a more **tonal** and **earthy** colour palette will allow this to shine through and create a good **backdrop** for residents to **personalise** their homes. Using **CLT** for new partitions will surround the occupants in a **warm, safe environment** and mean they can be pre-fabricated off-site, saving time and money for the build. Taking inspiration from Age UK's **colour palette in graphic elements** will give the scheme a more **interactive** and **playful** feel, reinforcing the concept.



This 3D perspective model of two apartments shows how the private spaces, for sleeping and bathing, sit around the edges of the apartment, benefiting from natural daylight. While the living and kitchen space makes up the central part of the apartments meaning they can become connected as one. You can see how the windows provide the connection to the street, and the coloured doors and window boxes give each apartment their own personality.



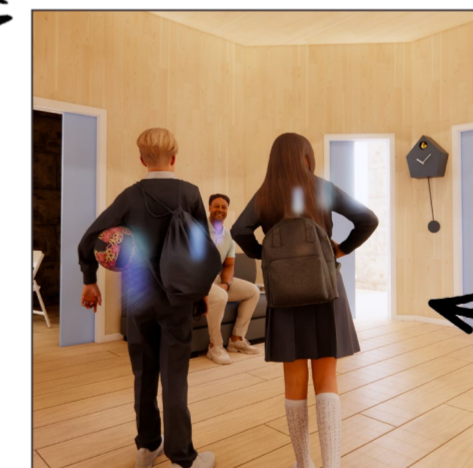
Gwen's Journey



Wake up & enjoy breakfast while watching some TV



Head out to the street & have a chat with the neighbours



Open the shared living space & welcome the Pearce children from school



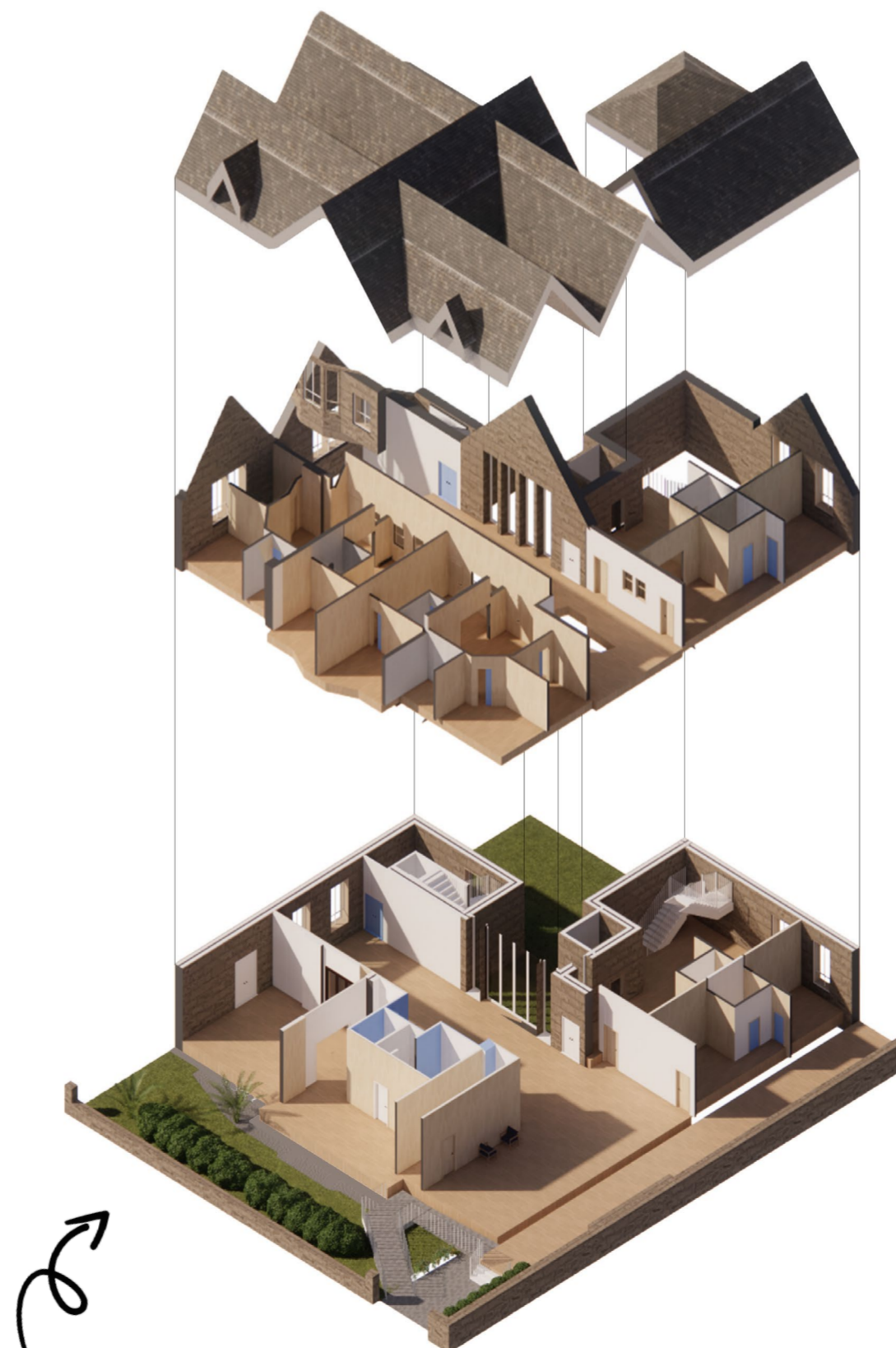
Help out in the Age UK Retail space downstairs



Enjoy some relaxed time downstairs reading with the children



Have a lovely dinner with the Pearce family from next door



The exploded axonometric shows how the interior streetscape is connected to the rest of the scheme. New & old partitions work together to create semi-public and private spaces, like a community kitchen and Age UK hub on the ground floor, that both the public and residents can enjoy.