

HAVEN

LGBTQ+ REFUGE & COMMUNITY CENTRE



SECTION BC



The Rainbow in the Storm

PROJECT BRIEF

Haven is an **LGBTQ+ community and refuge centre** in Bristol's 'gay village': Old Market. Providing **safe refuge for vulnerable LGBTQ+ asylum seekers** is the primary motivation for Haven. **Bringing the community together** is at the heart of the space, whilst also providing support services to help with **personal healing and expression**.

Understanding the **users, their past, present and future needs** whilst understanding the community as a whole was vital for the success of the project. The project explored how **castle architecture** can be harnessed and **modernised to protect the vulnerable community** and give them a new **home**. Haven is a place where its inhabitants **feel safe and protected**, a place where they can **express themselves** freely and a place where a **family and community is built**.

Haven is not just a home for the Bristol LGBTQ+ community, but **a beacon of refuge for the global LGBTQ+ community**.

THE ISSUE

Throughout history the LGBTQ+ community has faced much prejudice and abuse, constantly under fire from by religion, society and politics. In many second and third world countries political and societal homophobia is still prevalent. Since the turn of the century LGBTQ+ rights in first world countries have seen many advances. However, these advances are under threat from restrictive practises and legislation even in countries such as the United States. The Rwanda deportation bill in the UK directly effects LGBTQ+ asylum seekers.

The global LGBTQ+ community is under attack, so as designers how can we help?

This brief is designed to respond to the concerns around **global LGBTQI+ rights** and the **failing UK immigration system**. In 2021 the BBC reported that in six countries, now seven, homosexuality is still **punishable by death** with 69 countries in total **criminalising homosexuality** and many more with engrained **social homophobia**. Some LGBTQI+ refugees in the UK have shared their stories of claiming asylum, **shedding light on the failures of the Home Office**.



UNSAFE COUNTRIES

DEATH PENALTY | PRISON SENTENCES

AFGHANISTAN, ALGERIA, ANTIGUA & BARBUDA, BANGLADESH, BARBADOS, BHUTAN, **BRUNEI**, BURUNDI, CAMEROON, CHAD, COMOROS, COOK ISLANDS, DOMINICA, EGYPT, ERITREA, ESWATINI, ETHIOPIA, GAMBIA,

GHANA, GRENADA, GUINEA, GUYANA, **IRAN**, JAMAICA, KENYA, KIRIBATI, KUWAIT, LEBANON, LIBERIA, LIBYA, MALAWI, MALAYSIA, MALDIVES, **MAURITANIA**, MAURITIUS, MOROCCO,

1 NO POVERTY



2 ZERO HUNGER



3 GOOD HEALTH AND WELL-BEING



5 GENDER EQUALITY



10 REDUCED INEQUALITIES



11 SUSTAINABLE CITIES AND COMMUNITIES



15 LIFE ON LAND



16 PEACE, JUSTICE AND STRONG INSTITUTIONS



MYANMAR, NAMIBIA, **NIGERIA**, OCCUPIED PALESTINIAN TERRITORY (GAZA STRIP), OMAN, PAKISTAN, PAPUA NEW GUINEA, QATAR, SAINT KITTS AND NEVIS, SAINT LUCIA, SAINT VINCENT AND THE GRENADINES, SAMOA, **SAUDI ARABIA**, SENEGAL, SIERRA LEONE,

SINGAPORE, SOLOMON ISLANDS, SOMALIA, SOUTH SUDAN, SRI LANKA, SUDAN, SYRIA, TANZANIA, TOGO, TONGA, TUNISIA, TURKMENISTAN, TUVALU, **UGANDA**, UZBEKISTAN, **YEMEN**, ZAMBIA, ZIMBABWE

69 COUNTRIES CRIMINALISE HOMOSEXUALITY WITH PRISON SENTENCES

7 COUNTRIES USE THE DEATH PENALTY AS A PUNISHMENT FOR HOMOSEXUAL ACTS



THE REAL PEOPLE

ASYLUM SEEKER



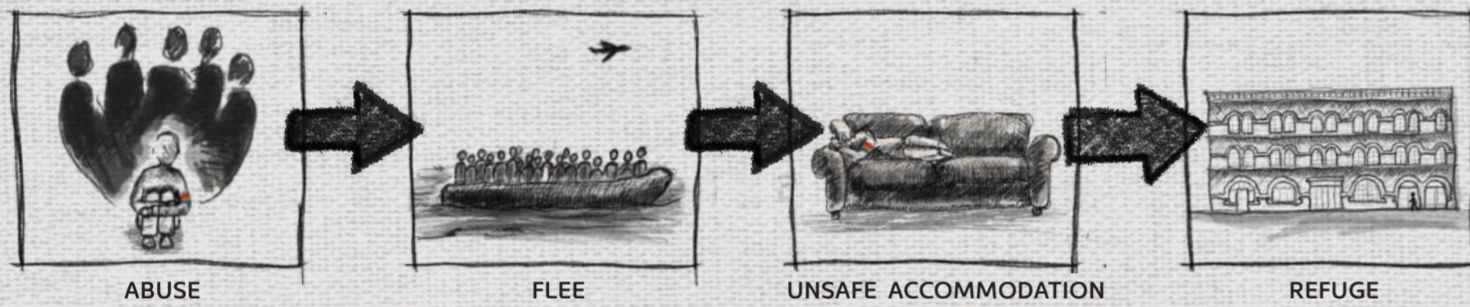
STAYCEY SHE / HER

Sexual Orientation: Lesbian
Age: 44
Birth Country: Nigeria
Asylum Application: 2018
Refuge Status: Denied / on going

BACKGROUND

Staycey fled Nigeria when her local community discovered her sexuality and was **nearly killed in an homophobic attack**. When she came to the UK she felt the **crippling loneliness, not knowing who she could trust**. So far Staycey's applications for asylum have been rejected. After two months in a **detention centre** Staycey was left **homeless and pushed from sofa to sofa**. Staycey could be living in safety at Haven whilst she is waiting to go to court to fight her case for asylum.

PSYCHOLOGICAL JOURNEY



LOCAL COMMUNITY



JAMIE HE / HIM

Sexual Orientation: Gay
Age: 24
Birth Country: England
Asylum Application: N/A
Refuge Status: N/A

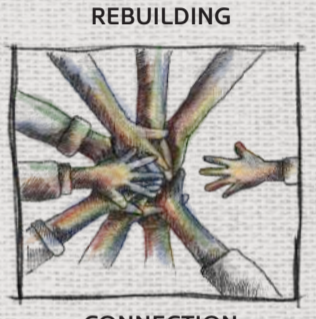
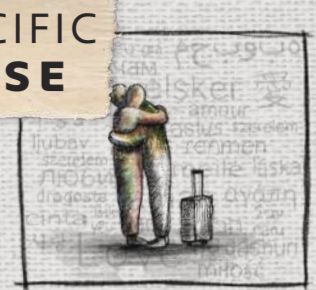
BACKGROUND

Jamie was born and raised in a very traditional and **religious family**. His parents embraced his sexuality when he **came out at university**. However, he didn't feel comfortable in his **conservative village**. After university Jamie moved to Bristol for career opportunities. Haven could provide Jamie a safe and easy way to join the Bristol LGBTQ+ community by providing social spaces and community groups such as a queer book club.

PSYCHOLOGICAL JOURNEY



USER-SPECIFIC RESPONSE



THE COMMUNITY

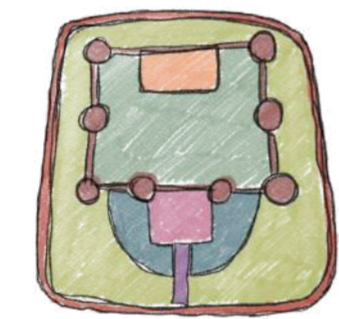
Haven aims to unite the **LGBTQ+ community in Bristol** with the micro community of **LGBTQ+ asylum seekers & refugees**. This is a diverse, **multi-cultural, intergenerational** community that has **faced abuse, prejudice and injustice**. Taking a **psychological approach** allows for a more **sensitive and empathetic response** that designs for **real people, with real lives**.

COMMUNITY VALUES

- SAFETY
- HEALING
- ACCESSIBLE
- BELONGING
- EMPOWERMENT
- EMBRACING

PROTECTIVE CONCEPT

What if the castle 'defence in depth' strategy was used to protect the community?



- | TRADITION | INTERPRETATION |
|---------------|--------------------|
| OUTER WALL | EXTERIOR WALLS |
| OUTER WARD | COURTYARD |
| DRAWBRIDGE | DRAWBRIDGE |
| MOAT | MOAT |
| GATE HOUSE | SUPPORT SERVICES |
| VIEWING TOWER | VIEWING BALCONIES |
| INNER WARD | INTERIOR COURTYARD |
| THE KEEP | ACCOMMODATION |



CASTLE & FORTRESS ARCHITECTURE

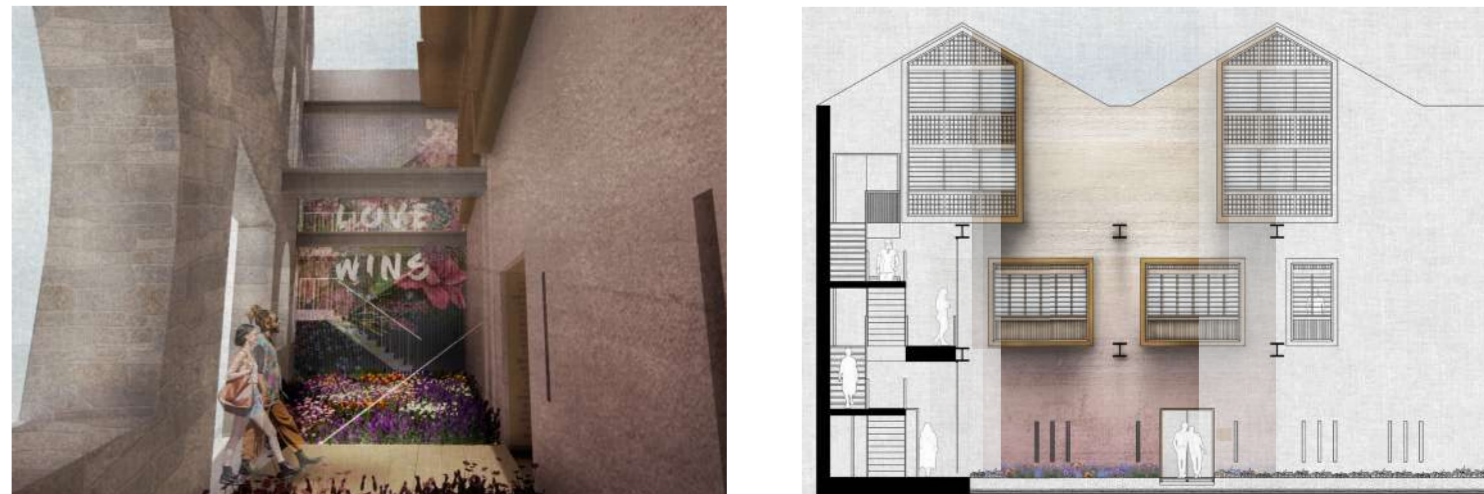
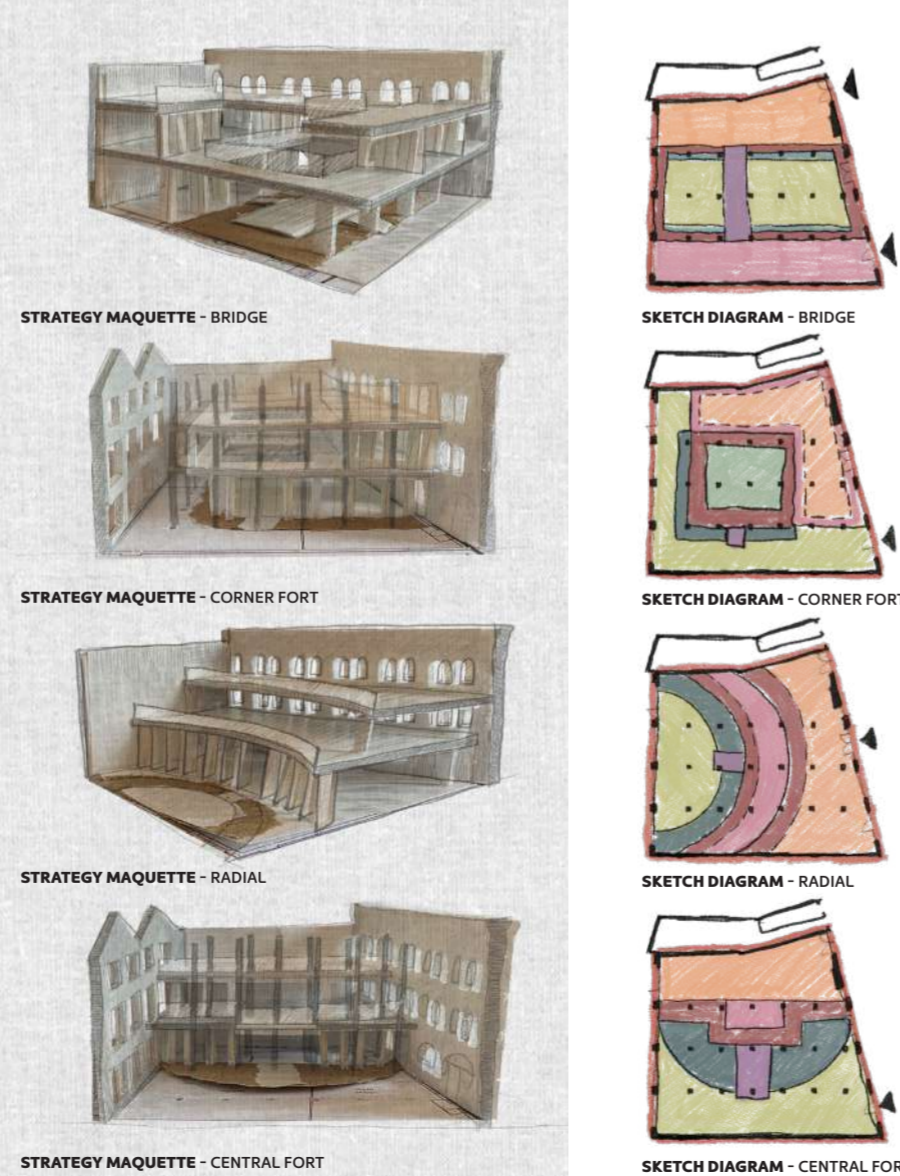
As a **response to the vulnerability of the community**, the project concept revolves around the idea of **architectural defence and protection**. Built for battle, **castle and fortresses** are the ultimate example of **architecture designed for protection**. The **multi-layered** approach to defence not only **protects its inhabitants** but also creates a **contained community**. Even though architectural practices have evolved, the protective strategy can be translated into modern applications.

CONCEPT NARRATIVE

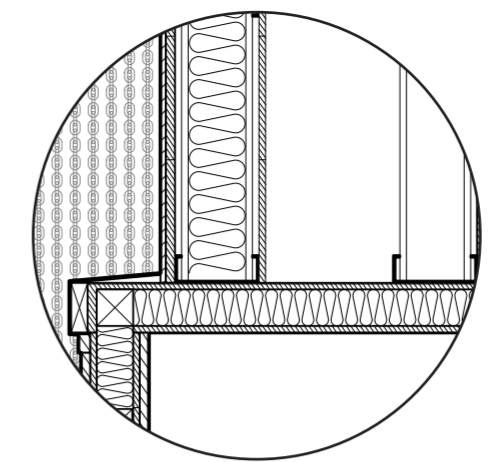


STRATEGY MODELS

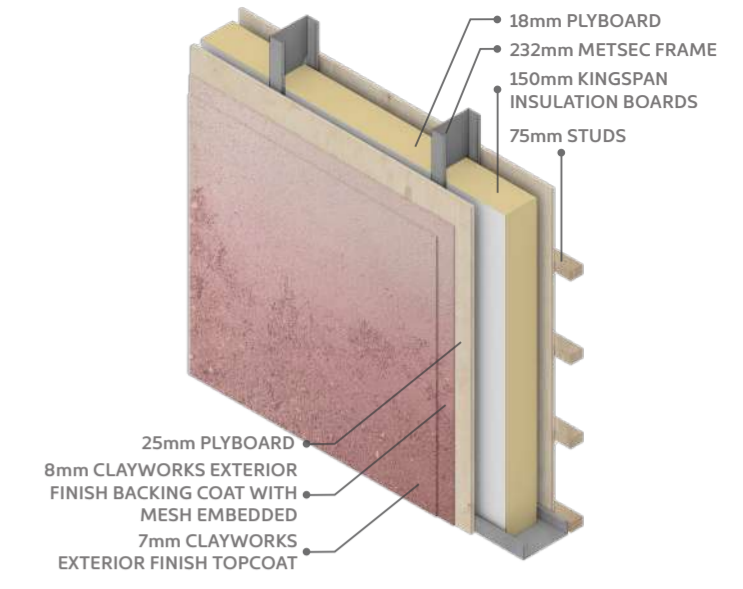
Starting with looking at what the traditional layers of architecture are and then giving them a modern interpretation. Diagrams helped to explore this quickly within the context of my site. A series of models were then used to explore this diagrams in 3D. From this exploration it was found that an offset facade allowed for the ultimate protective barrier, completed with a flower moat and drawbridge. Internal courtyards were then introduced to complete the main architectural design features.



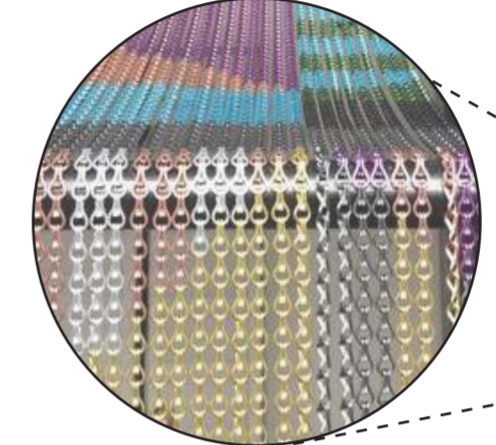
LAYERS OF PROTECTION



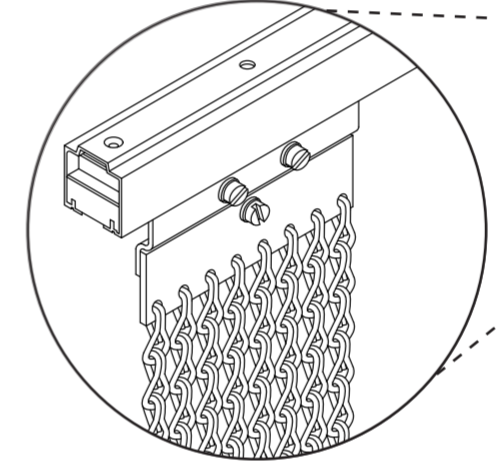
NEW FACADE CONSTRUCTION



18mm PLYBOARD
232mm METSEC FRAME
150mm KINGSPAN INSULATION BOARDS
75mm STUDS
25mm PLYBOARD
8mm CLAYWORKS EXTERIOR FINISH BACKING COAT WITH MESH EMBEDDED
7mm CLAYWORKS EXTERIOR FINISH TOPCOAT



MURAL USING COLOURED CHAIN LINKS



CHAIN FIXATION SYSTEM



PERFORATED 'LOVE' ENTRANCE LINING



LOVE MURAL ON CHAINMAIL CURTAIN

Using Amron's Kriskadecor mesh curtain, a bespoke flower mural will be printed onto the chain curtain. The curtains will be mounted onto the exposed structural beams using Amron's sliding panel fixation system. This is a mural that spans across the ground and first floor and will be visible not only from the main drawbridge entrance but also from the street therefore this mural is an important start to the **welcoming message of love and acceptance.**

PROTECTIVE ENTRANCE

The main protective design feature is the new offset facade that creates the **protective entrance courtyard**. By extending the threshold with the flower moat, the area becomes a buffer zone that **separates outside from in**. This area has many **layers of protection** through **materiality, site lines, transparency and form**. This is a modern interpretation of castle architecture, taking inspiration from elements such as moats and drawbridges.

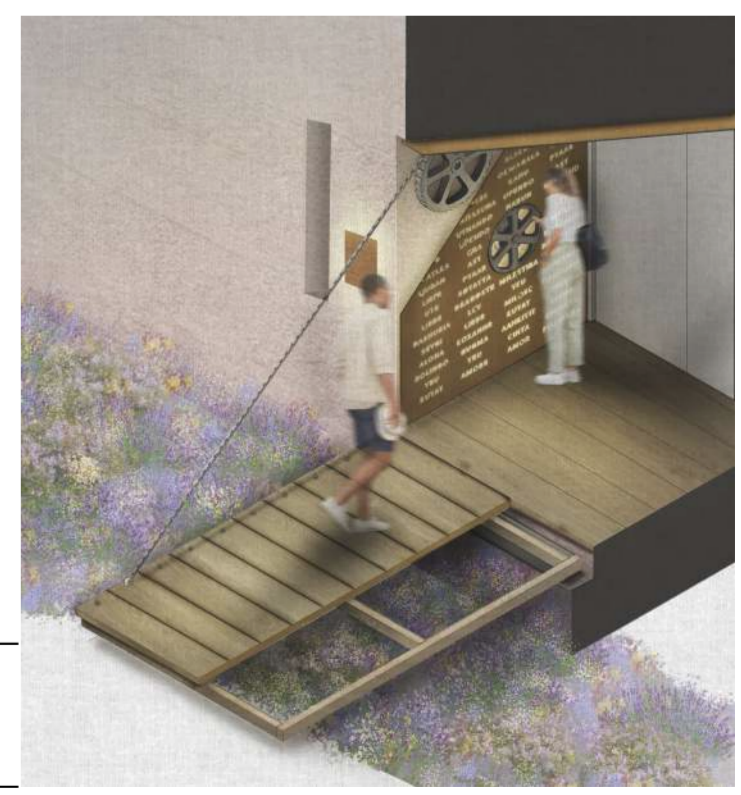
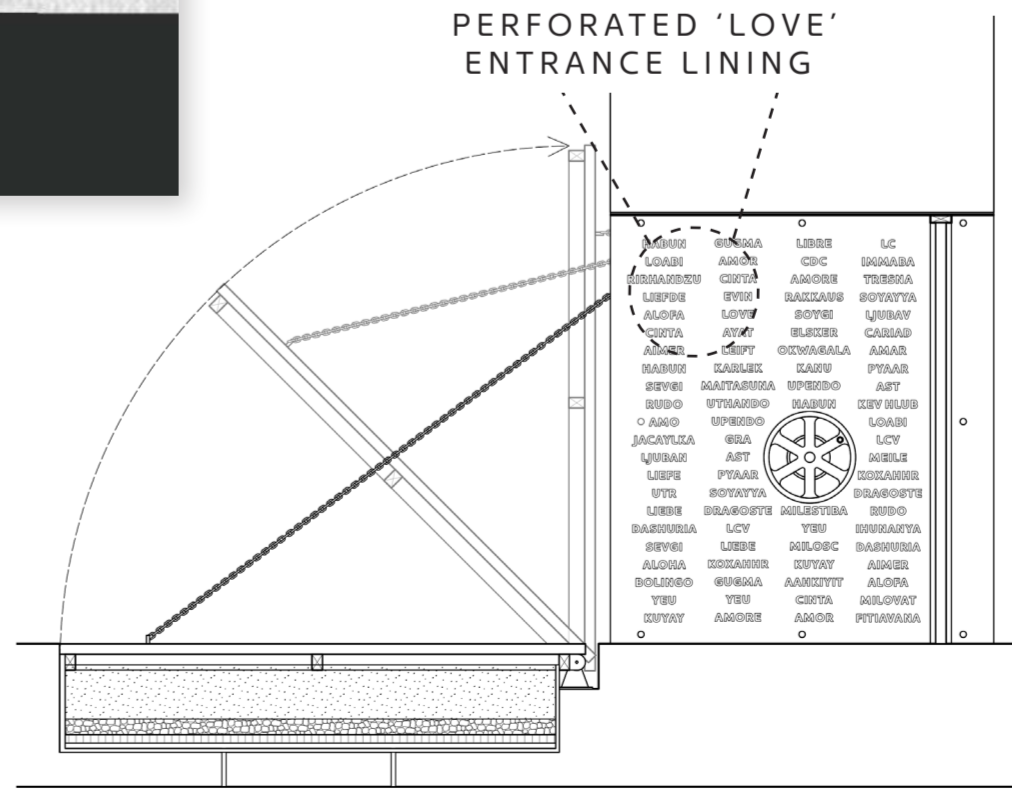
FLOWER MOAT

Like many war memorials, a moat of flowers is used as a **symbol of a lost community**. The chosen flowers consists of **lavender, violets, pansies and green carnations**. These are **historic symbols of the LGBTQ+ community** and act as a symbol for those who we have lost. As an example of **natural beauty**, the flower moat acts as the **second layer of defence**, after the outer existing facade.



LOVE & DRAWBRIDGE ENTRANCEWAY

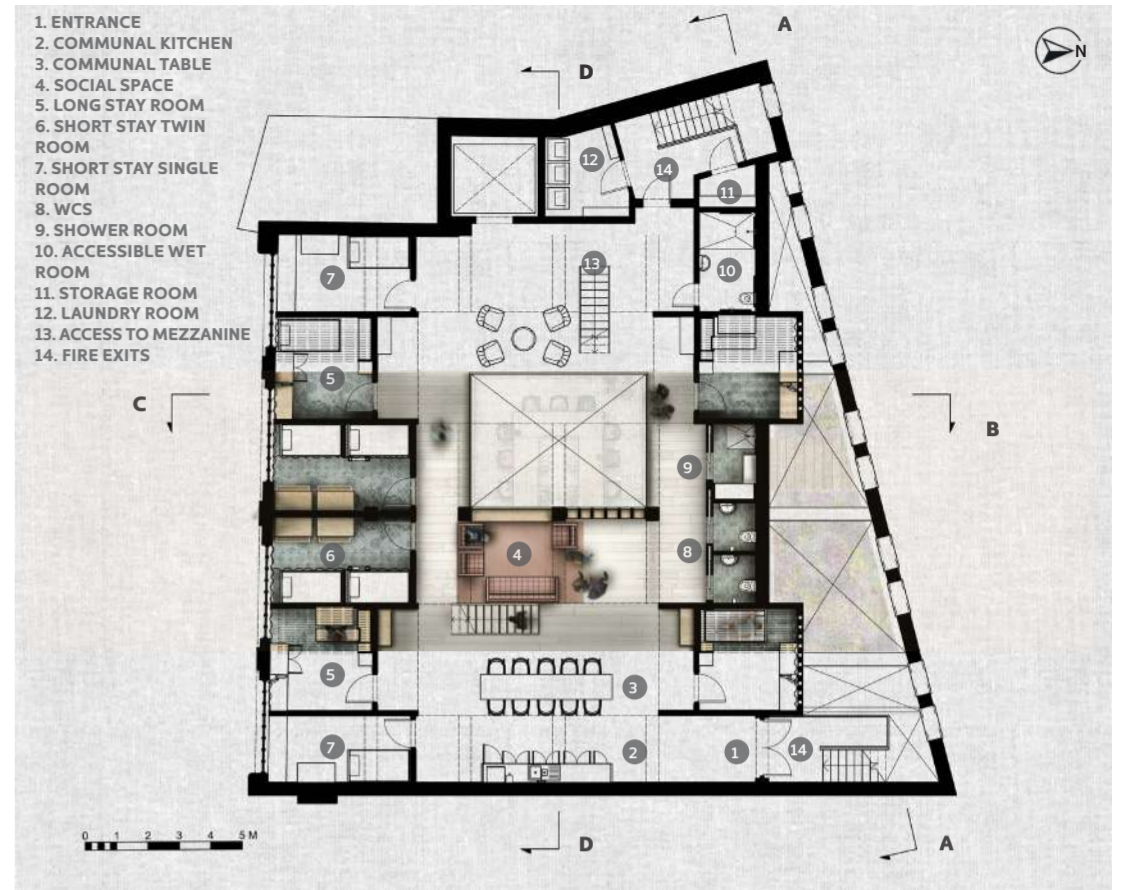
The **celebration of love** is a focal element of the community and will be reflected in the courtyard. To speak to all the visitors, the word **'Love' has been translated** and applied to a perforated corten sheet that lines the perimeter of the entrance way. This element means that all visitors, no matter where they are from or what language they speak, **can see the word love in their own language** as they enter the building.



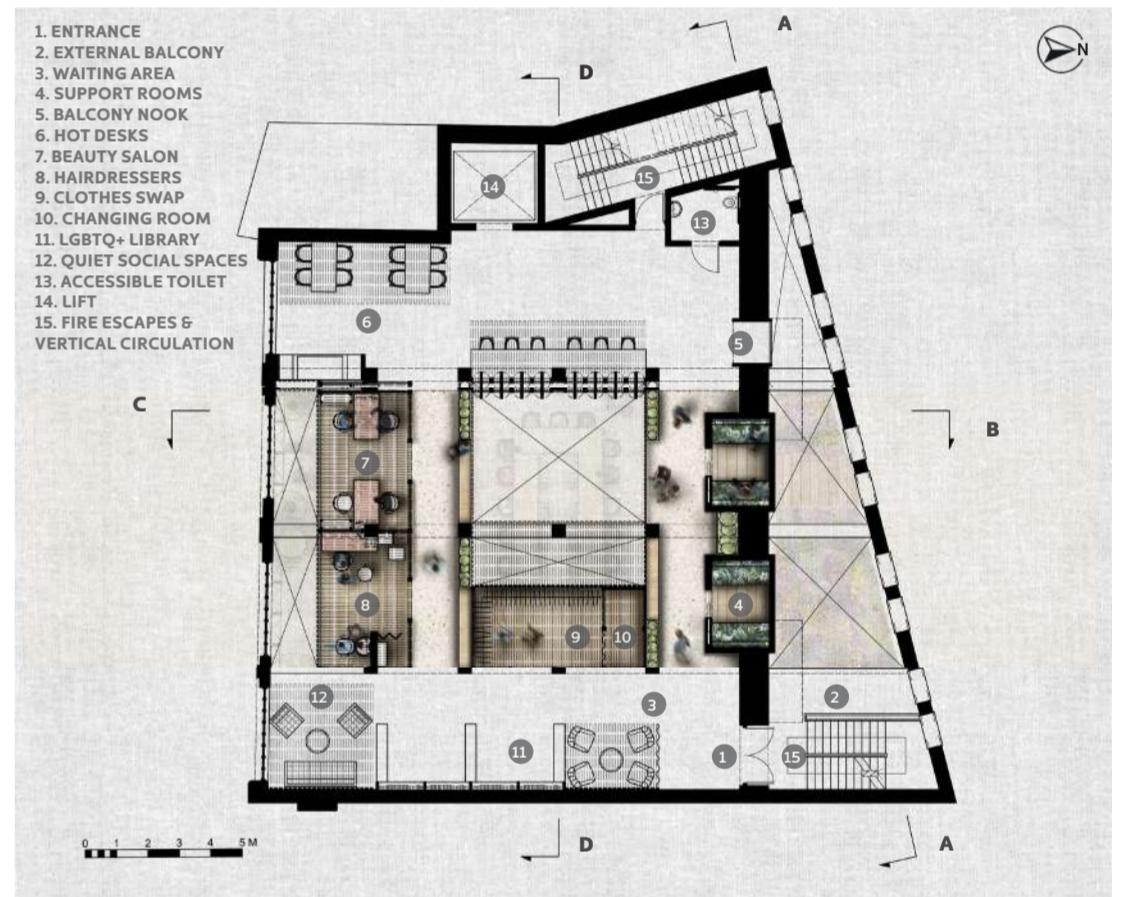
DESIGN PROPOSAL



SECTION DD



SECOND FLOOR HOME



FIRST FLOOR HEAL

CONNECT



COMING TOGETHER

The focus of the ground floor is to create spaces where **people can come together**. Instead of a conventional cafe, the **open plan culture kitchen** allows the community to grab a coffee or cook together. The kitchen flows into the Banquet Courtyard, this is the ideal space for the **community to share a meal, hold events or group meetings**. The Winter Garden responds to **community feedback asking for green spaces**.

HEAL



SELF EXPRESSION

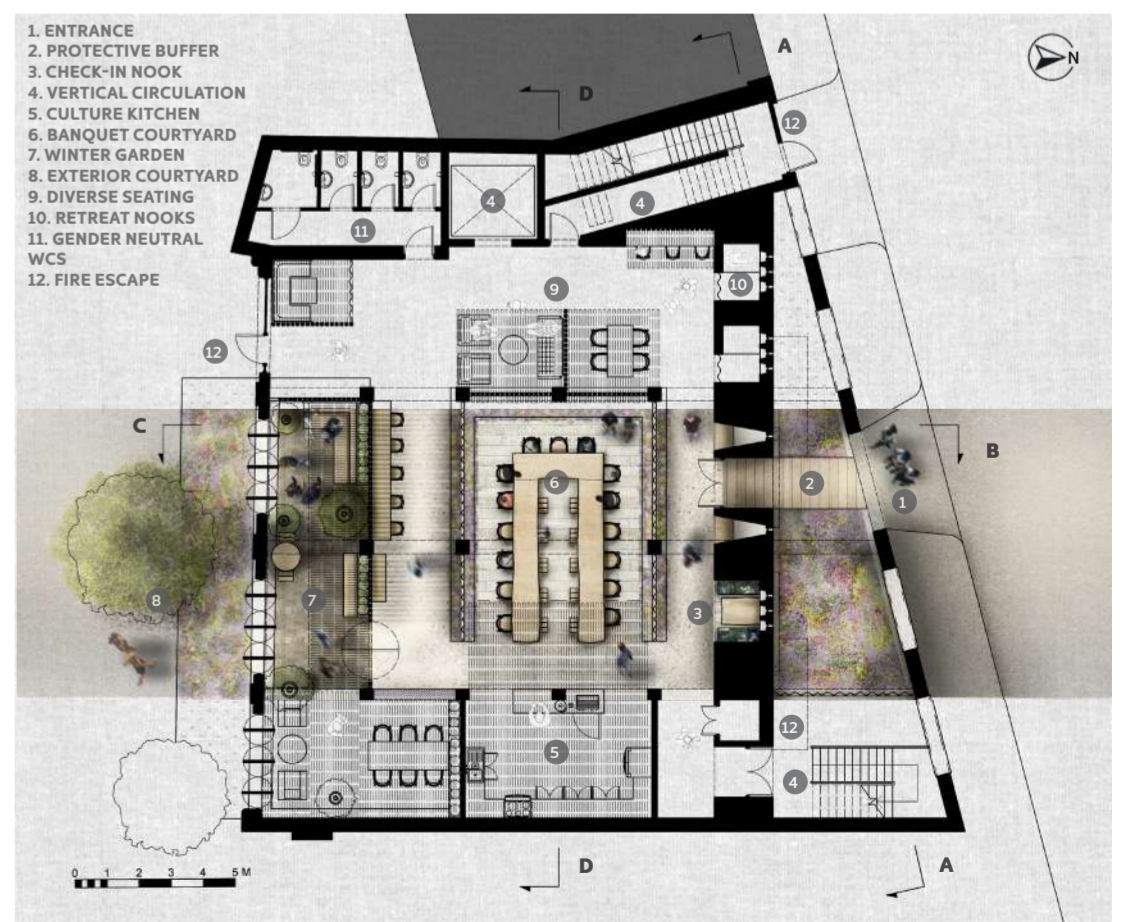
Healing being the common theme of the first floor, the **self expression** booths provide services such as a **clothes swap, hair and beauty salons**. This provides the users the **freedom to heal and express themselves** whatever way they wish. Quiet spaces are great for those looking to relax and retreat. This aims to bring people together through shared reading experiences and would support community book clubs.

HOME



REFUGE ACCOMMODATION

The second floor is reserved just for the asylum seeking residents, to **provide them safe home**. For many who are new, going down to the wider community spaces on the ground and first floor may be too daunting, so these communal spaces on the second floor are a **haven and refuge**. To connect upper level accommodation rooms, neighbour nooks provide more **intimate and cosy areas**. Haven is more than just refuge accommodation, it is a **home and a beacon for vulnerable LGBTQ+ people**.



GROUND FLOOR CONNECT

COLOUR & MATERIALITY



Protective, honest and transparent materials

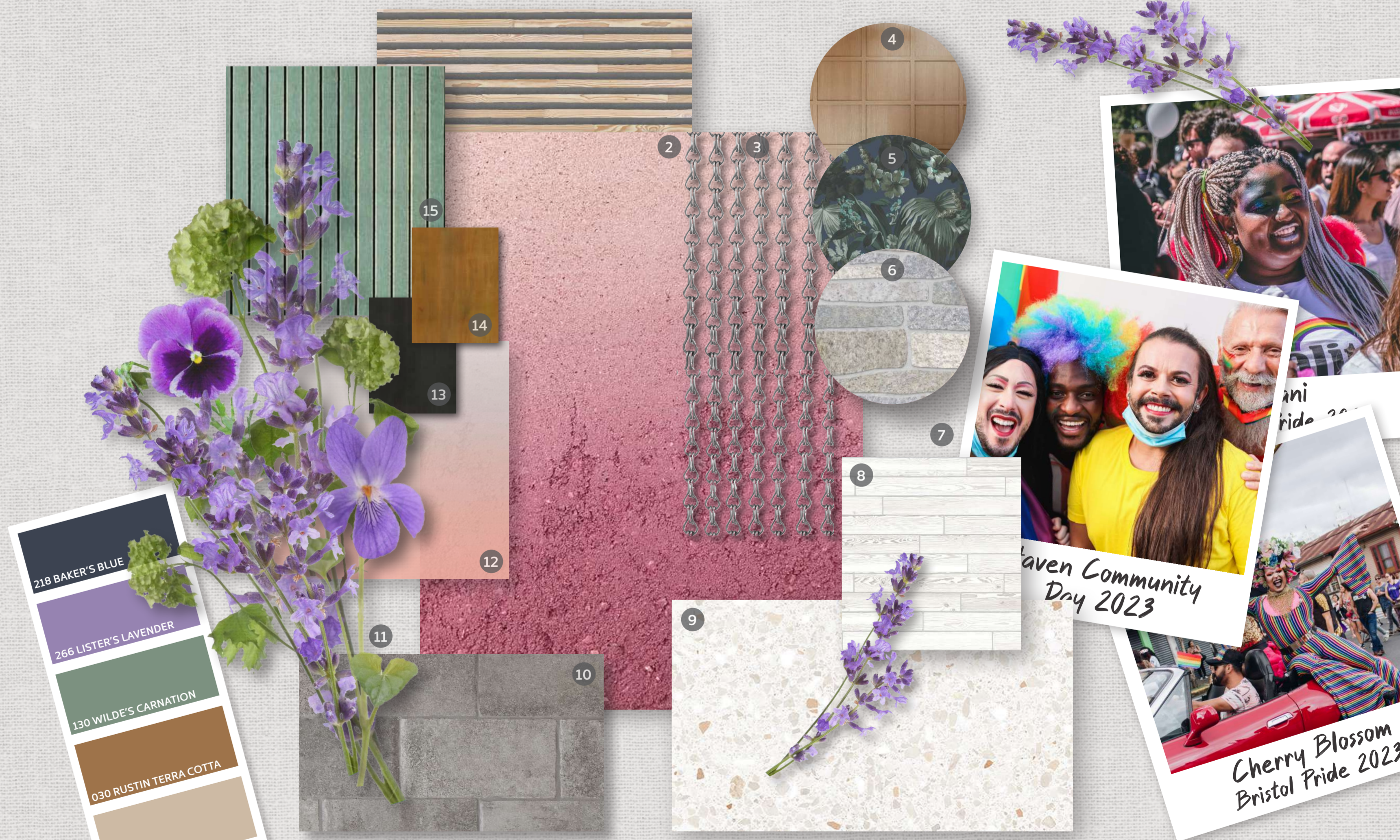
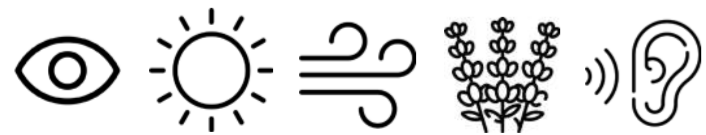
MATERIALITY

Biophilic design has proved that the **connection to nature** is an effective tool in promoting **health and well-being**, especially relating to the **users' psychological experience** of a space. A **multi-layered sensory approach** has been considered with material's look, feel, scent and its effect on acoustics.

'Haven' revolves around **safety and protection**, not just **physically**, but also **mentally**. Therefore, health and well-being are embedded throughout the scheme's materiality. Selected to reflect this narrative, materials used will be **low in VOCs** to help with **air quality, acoustics** and **thermal insulation**. The existing stone and brick façades has a protective and strong character. Internally, timber cladding and metal mesh curtains continue the protective nature by creating enclosed spaces but also allow for partial transparency. To reduce the need for new materials, scrapped timber from site demolition can be used for the internal timber cladding.

COLOUR

Following biophilic design principles to focus on the **beauty of natural colours**. These **earthy tones** will make up the base of the colour palette to emphasise the **honesty and healing quality** of the space. Flowers, gradient Clayworks and stained panelling brings **subtle colour** to the architecture. Generally spaces for the LGBTQ+ community tend to be saturated in colour from the pride flag, however, in Haven the building aims to be a **neutral canvas** so that the **vibrancy and colour from people in the community can be celebrated**.



- 1. TIMBER WALL AND CEILING CLADDING
- 2. CUSTOM GRADIENT COLOUR AND OMBRE TEXTURE CLAYPLASTER
- 3. METAL MESH CURTAINS
- 4. SQUARE TIMBER PANELLING
- 5. HOUSE OF HACKNEY FLORAL UPHOLSTERY
- 6. LOCAL PENNANT STONE
- 7. BRISTOL LGBTQ+ COMMUNITY
- 8. TIMBER FLOOR BOARDS
- 9. DOMUS HAPPY FLOORING TILE
- 10. DOMUS LE GERS FLOORING TILE
- 11. LAVENDER, VIOLETS, PANSIES AND

- 12. GRADIENT FROSTED SAFETY GLASS
- 13. BLACK POWDER COATED STEEL
- 14. CORTEN STEEL
- 15. HONEXT INTERIOR CLADDING

