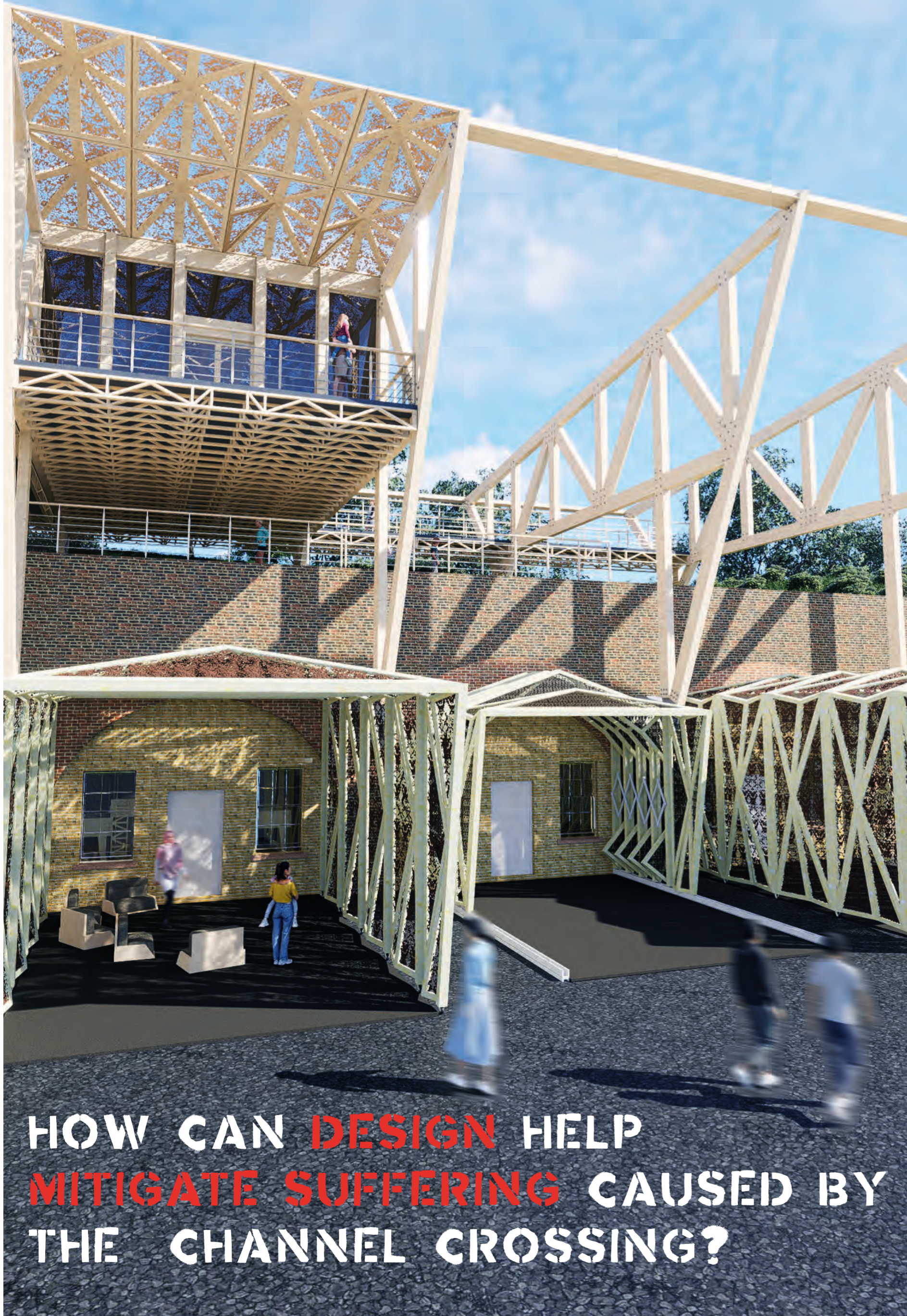


CHANNEL COVERT



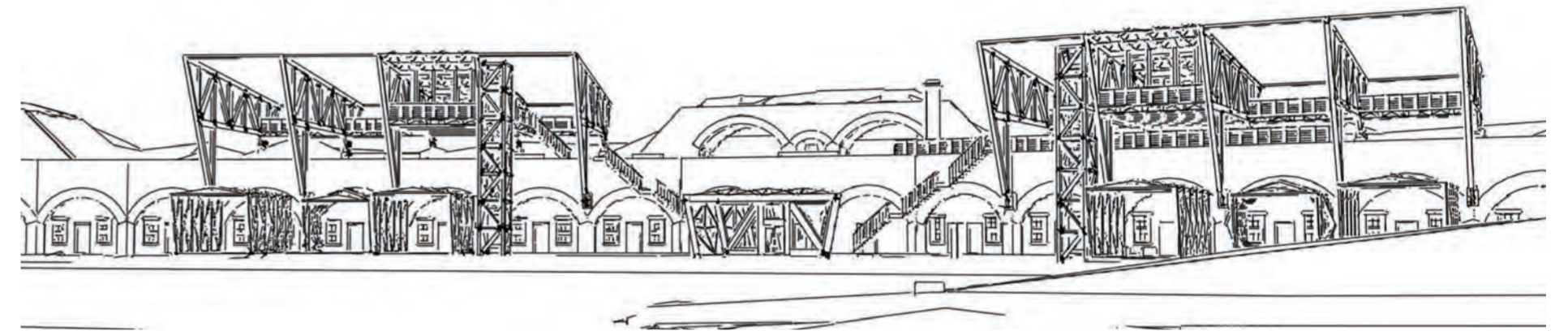
HOW CAN DESIGN HELP MITIGATE SUFFERING CAUSED BY THE CHANNEL CROSSING?

REHABILITATION AND INTEGRATION OF MIGRANTS CROSSING THE CHANNEL

THE PROJECT INSPIRES THE SHIFT IN SOCIAL AND POLITICAL APPROACHES TO THE CHANNEL CROSSING, PROVIDING SAFE ACCOMMODATION AND SECURE SPACES FOR MIGRANTS, CONSIDERING ANY IMMEDIATE NEEDS THAT THIS VULNERABLE GROUP WOULD REQUIRE. THE SITE WILL BE FOCUSED ON REFUGE, REHABILITATION AND INTEGRATION. OPPORTUNITIES TO GROW AND LEARN WILL CATER TO THIS DIVERSE DEMOGRAPHIC AND SUPPORT THEIR FUTURE PROSPECTS IN THE UK. DESIGNING TO INVOKE CHANGE, THE PROJECT WILL TAKE A HUMANITARIAN APPROACH SUPPORTING JUSTICE FOR REFUGEES. WITH CHANNEL CROSSINGS ONLY INCREASING, THIS FACILITY COULD BE ESSENTIAL.

ANALYSING ALTERNATIVES TO TRADITIONAL HOUSING AND TEMPORARY STRUCTURES THE PROJECT OCCUPIES AN ANCIENT MONUMENT TO REINSTATE NEW FUNCTION TO A FORGOTTEN BUILDING. THE BALANCE BETWEEN SWIFT CONSTRUCTION AND QUALITY LIVING SPACE ARE EXPLORED ALONGSIDE THEMES OF EXPANSION AND CONTRACTION, ASSEMBLE AND DISMANTLE HELP TO FOLLOW THE FLUCTUATION OF CROSSINGS AND ARRIVALS. WITH THIS GROUP OF PEOPLE FREQUENTLY TREATED AS STATISTICS RATHER THAN INDIVIDUALS (WHO HAVE OFTEN ENDURED LEVELS OF TRAUMA TO REACH THE UK) A SHIFT IN SOCIAL AND POLITICAL PERCEPTIONS AND STRATEGIES IS KEY IN RESTORING EQUALITY.

BRIEF



REALISTIC JOURNEY

HOSTILE ENVIRONMENT



FLEE COUNTRY



TRAVEL THROUGH EUROPE



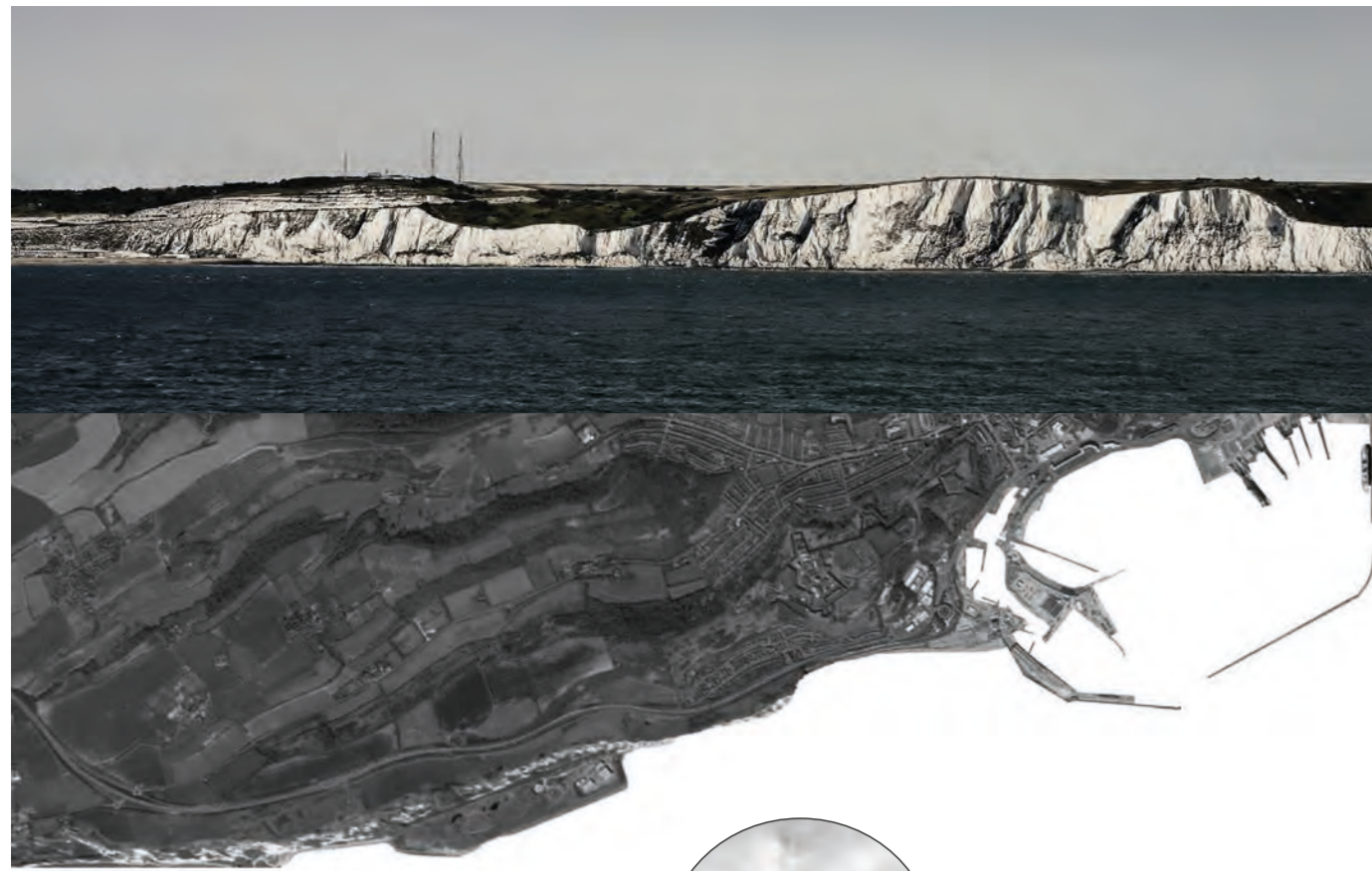
CROSS THE CHANNEL



ARRIVE AT THE CHANNEL COVERT

ENCOURAGING INTEGRATION BETWEEN MIGRANTS AND LOCAL COMMUNITIES WILL HELP TACKLE SOME OF THE CORE ISSUES REFUGEES FACE, REDUCING SOCIAL ISOLATION AND CREATING MORE OPPORTUNITIES IN UK SOCIETY. THE CHANNEL COVERT CREATES A COMMUNITY IN WHICH PEOPLE COME TOGETHER TO LIVE, SOCIALISE AND PARTAKE IN CONSTRUCTIVE ACTIVITIES WITH LOCAL RESIDENTS, WHILST LONG TERM HOUSING AND WORK SOLUTIONS ARE FOUND.

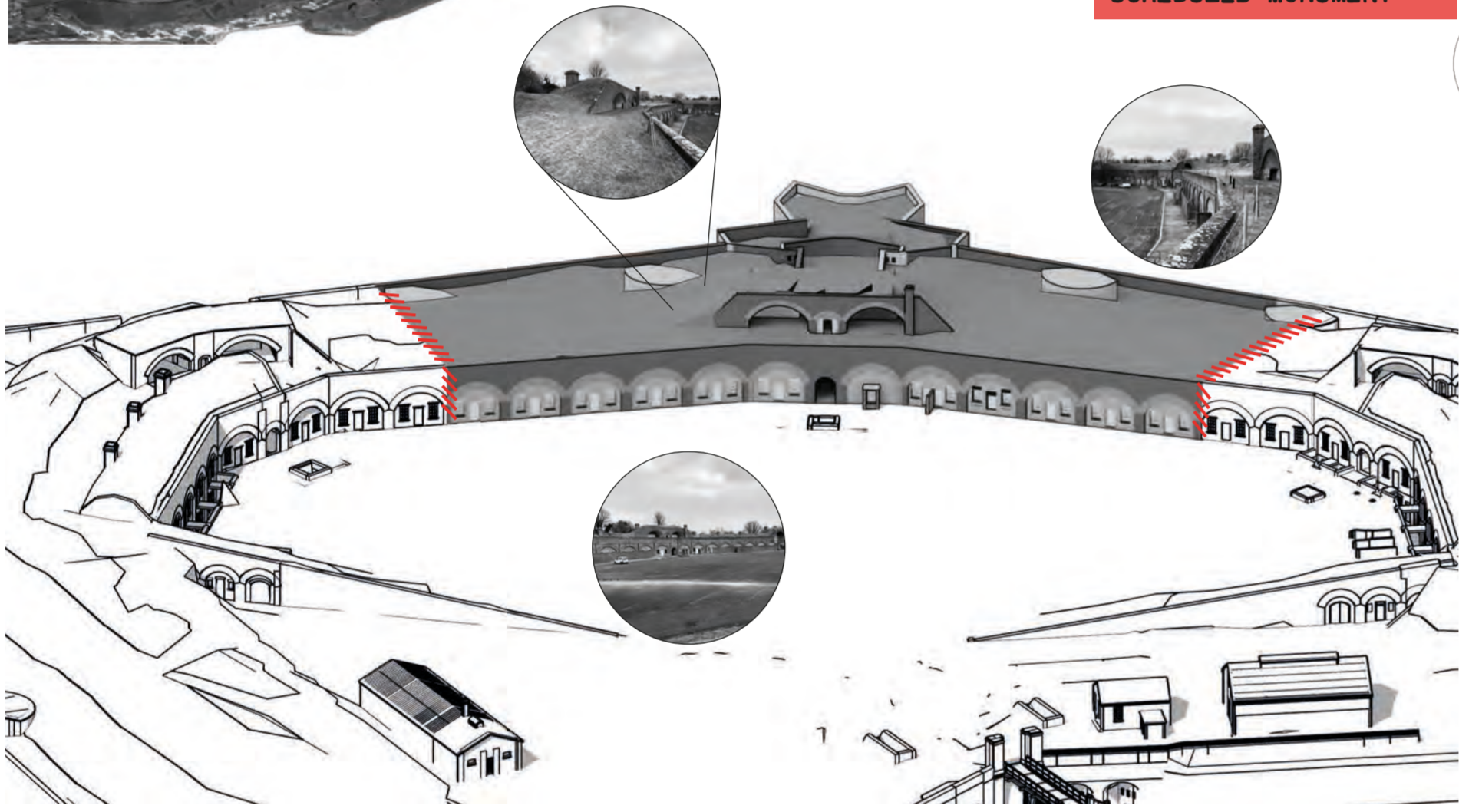




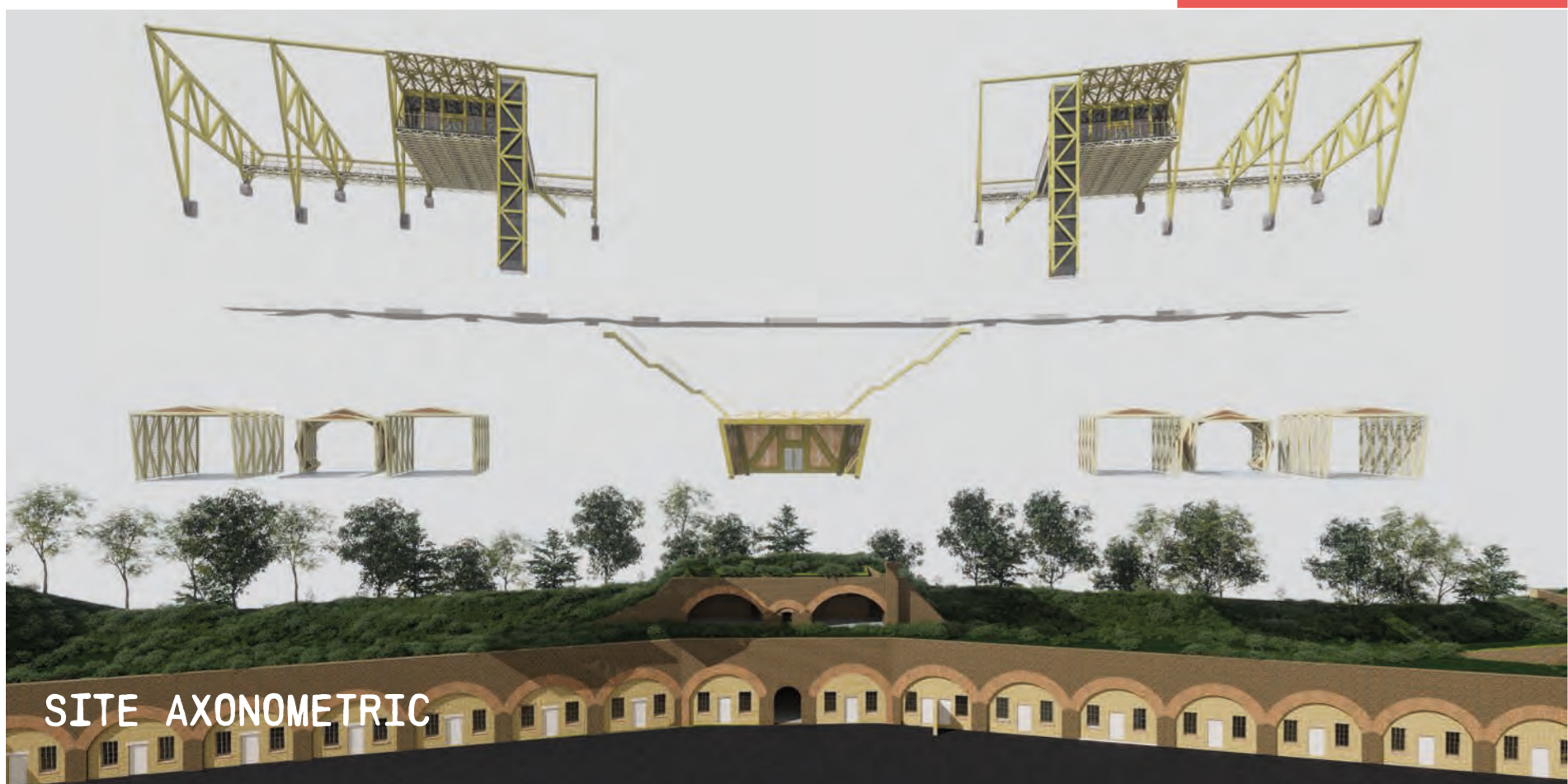
**SITE LOCATION:
DOVER**

SELECTING A SITE CLOSE TO THE ISSUE WAS IMPORTANT IN ORDER FOR THE CENTER TO BE EFFECTIVE IN RECEIVING AND REHABILITATING PEOPLE WITHIN A SHORT TIME FRAME AFTER MAKING THE CROSSING. LOCATED IN DOVER, IN CLOSE PROXIMITY TO THE FERRY PORT AND THE FAMOUS WHITE CLIFFS, FORT BURGOYNE WAS ORIGINALLY CONSTRUCTED TO GUARD DOVER AND DEFEND THE SOUTH COAST.

**SITE LISTING:
SCHEDULED MONUMENT**



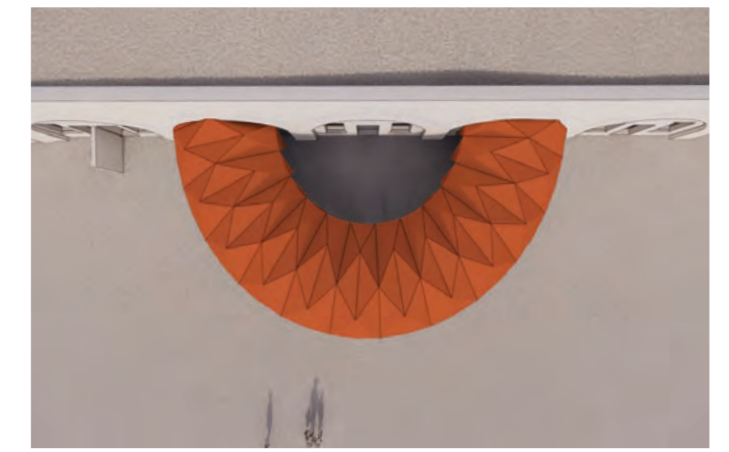
**SITE APPROACH:
TEMPORARY YET DURABLE**



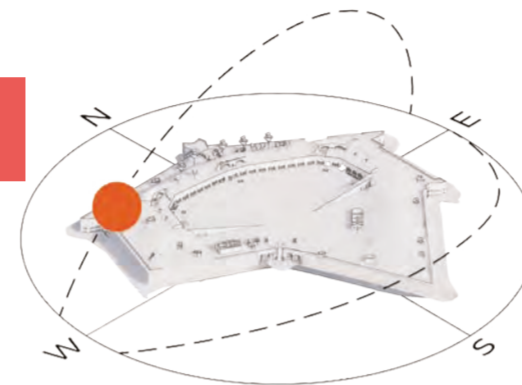
SITE AXONOMETRIC



THE CONCEPT



WHAT IF - THE SPACE COULD EXPAND AND CONTRACT TO ACCOMMODATE A CHANGING VOLUME OF PEOPLE?



STRATEGY

FORT BURGOYNE IS CLASSIFIED AS A LISTED SITE, SO ANY ADDITIONAL STRUCTURES USED TO ENHANCE THE EXTERIOR MUST HAVE A LIGHT TOUCH ON THE LAND. SCHEDULED MONUMENTS LIKE THIS ARE NATIONALLY IMPORTANT ARCHAEOLOGICAL SITES AND HISTORIC BUILDINGS, SO ARE GRANTED SPECIAL PROTECTION IN ORDER TO MINIMISE THE IMPACT OF ANY SITE DEVELOPMENT ON THE EXISTING BUILDING WORK.

TO CREATE SPACES THAT CAN EXPAND AND CONTRACT WITH THE FLUCTUATION OF INHABITANT NUMBERS. THE CAPACITY OF THE SITE COULD GROW WHERE NECESSARY IN ORDER TO ACCOMMODATE DIFFERENT VOLUMES OF PEOPLE OVER TIME.



THE SPACE IS INTENDED FOR MIGRANTS WHO HAVE MADE THE CHANNEL CROSSING. THIS GROUP CONTAINS A DIVERSE ETHNIC DEMOGRAPHIC SO THE SITE WILL HAVE TO REMAIN ADAPTABLE AND VERSATILE TO PROVIDE OPTIMAL REFUGE TO ALL.

THESE PEOPLE START THEIR JOURNEY FROM MANY PLACES AROUND THE WORLD, LEAVING HOSTILITY IN HOPE OF SAFETY AND SECURITY.

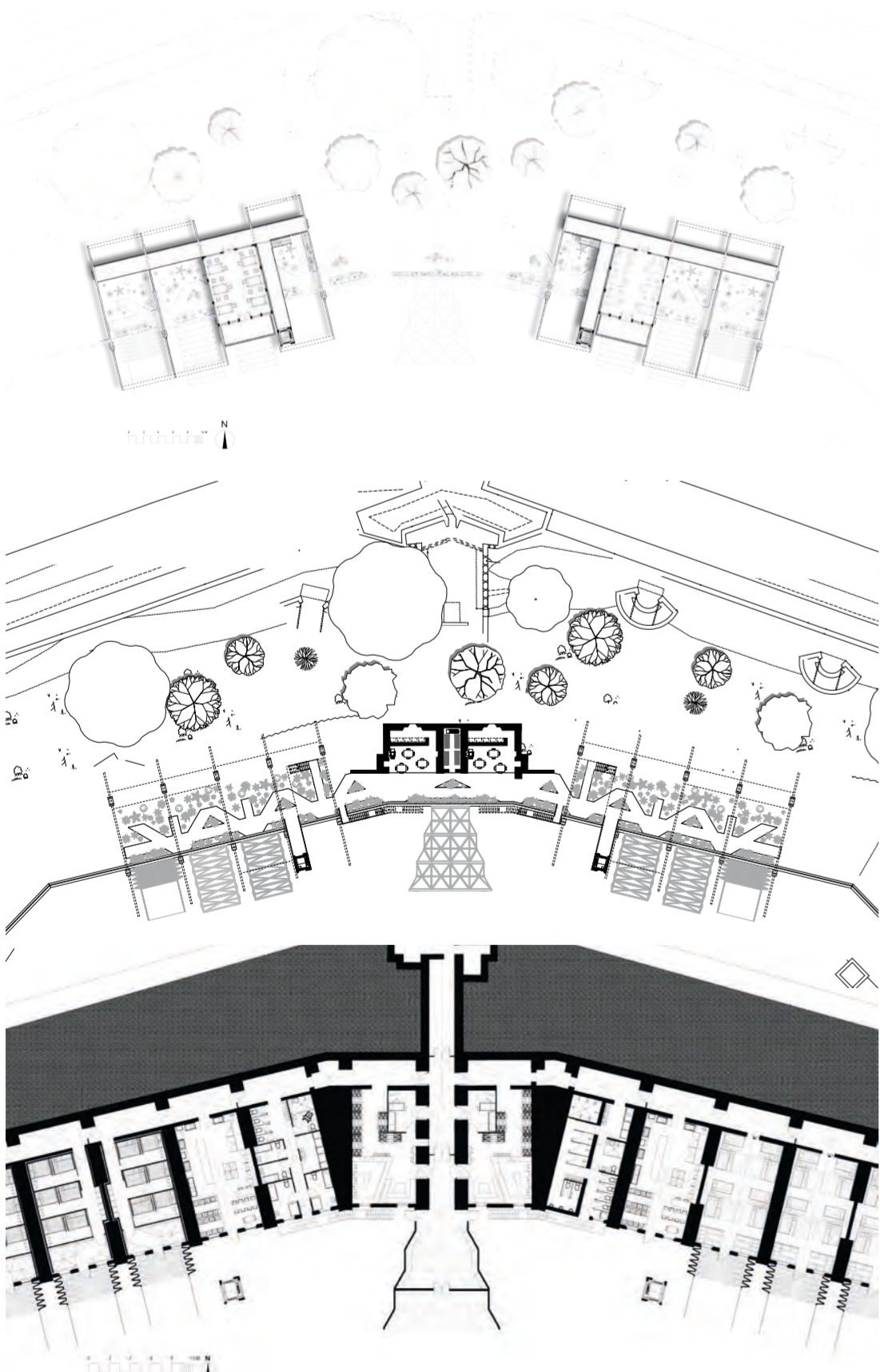


ALJAZEERA NEWS

News | Politics

UK under pressure to tackle 'wretched' migrant centre conditions





THE SECOND FLOOR HOUSES THE WORKSHOP SPACES AND WALKWAYS. THERE ARE CURRENTLY TWO WORKSHOP SPACES ON THE SECOND FLOOR, BUT WITH A PROJECTED PHASED EXPANSION WHERE MORE WORKSHOPS COULD BE ADDED AS THE SITE GROWS.



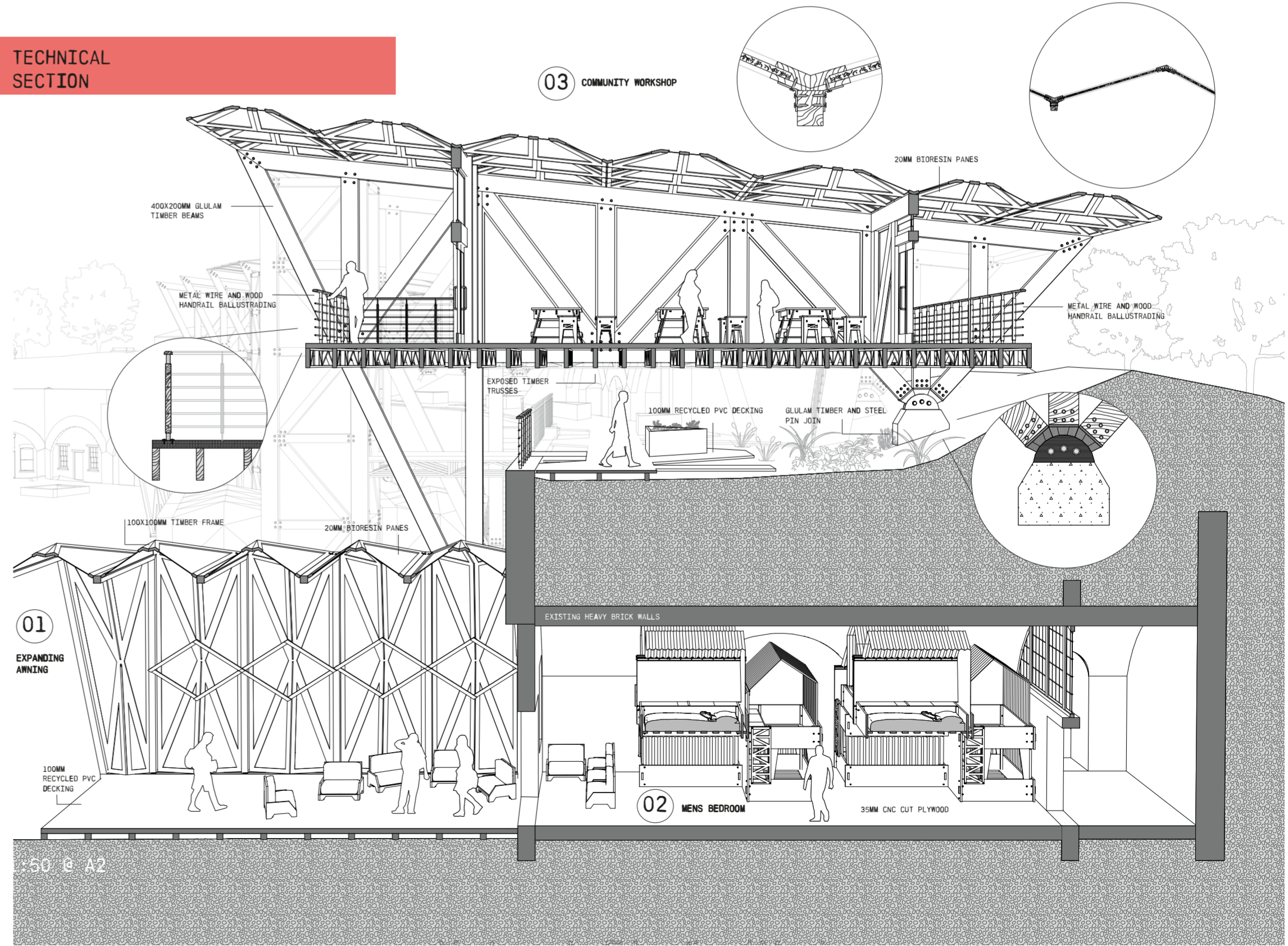
ON THE FIRST FLOOR THE HIGHLINE STRETCHES ACROSS THE LENGTH OF THE OCCUPIED SPACE. IT PROVIDES A TRANQUIL AREA AND WELLBEING GARDEN THAT LINKS THE GROUND FLOOR TO THE SECOND FLOOR WORKSHOP SPACES.



THE GROUND FLOOR GIVES ACCESS TO THE ESSENTIAL AMMENITIES OF THE SITE AND ACCOMODATION. WOMEN AND CHILDREN ARE HOUSED ON THE WEST WING, AND MEN ARE HOUSED ON THE EAST WING.



TECHNICAL SECTION

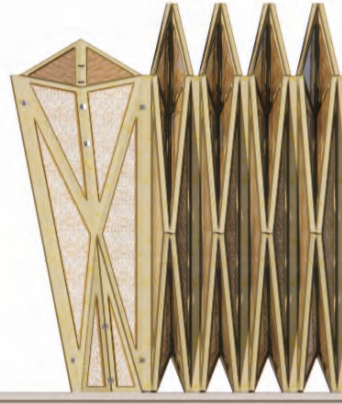
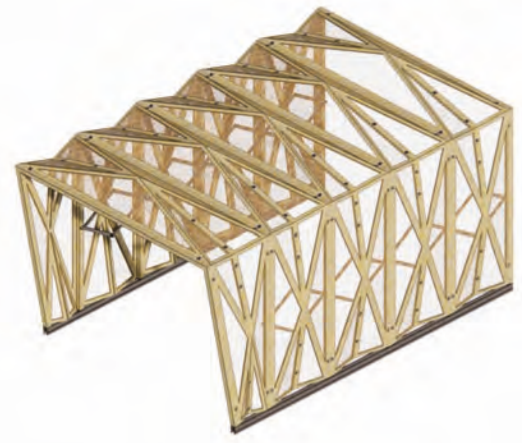


01 EXPANDING AWNING

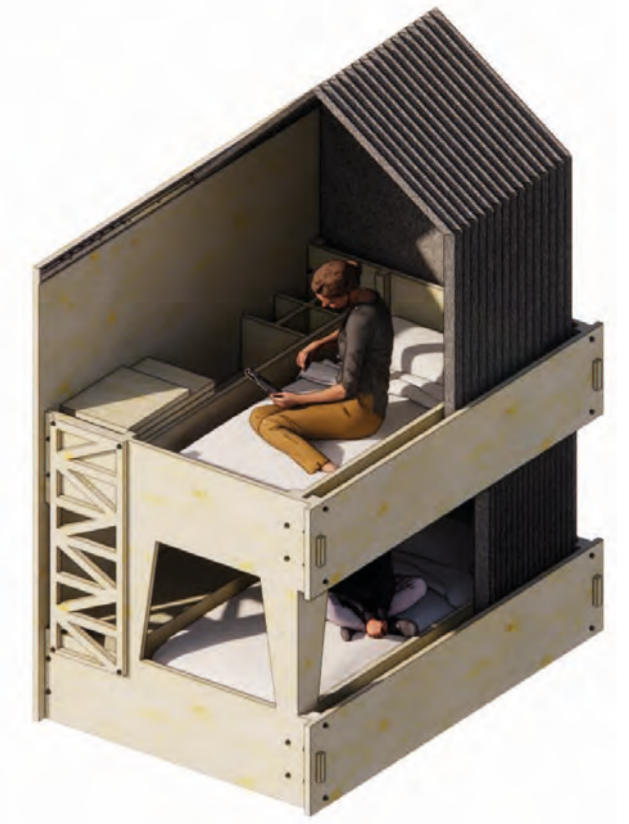
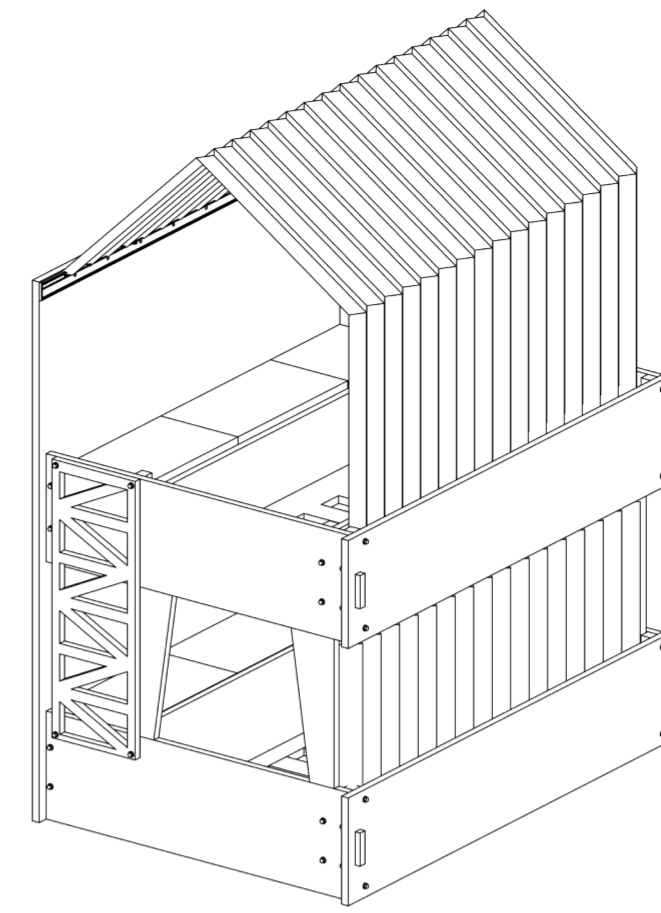
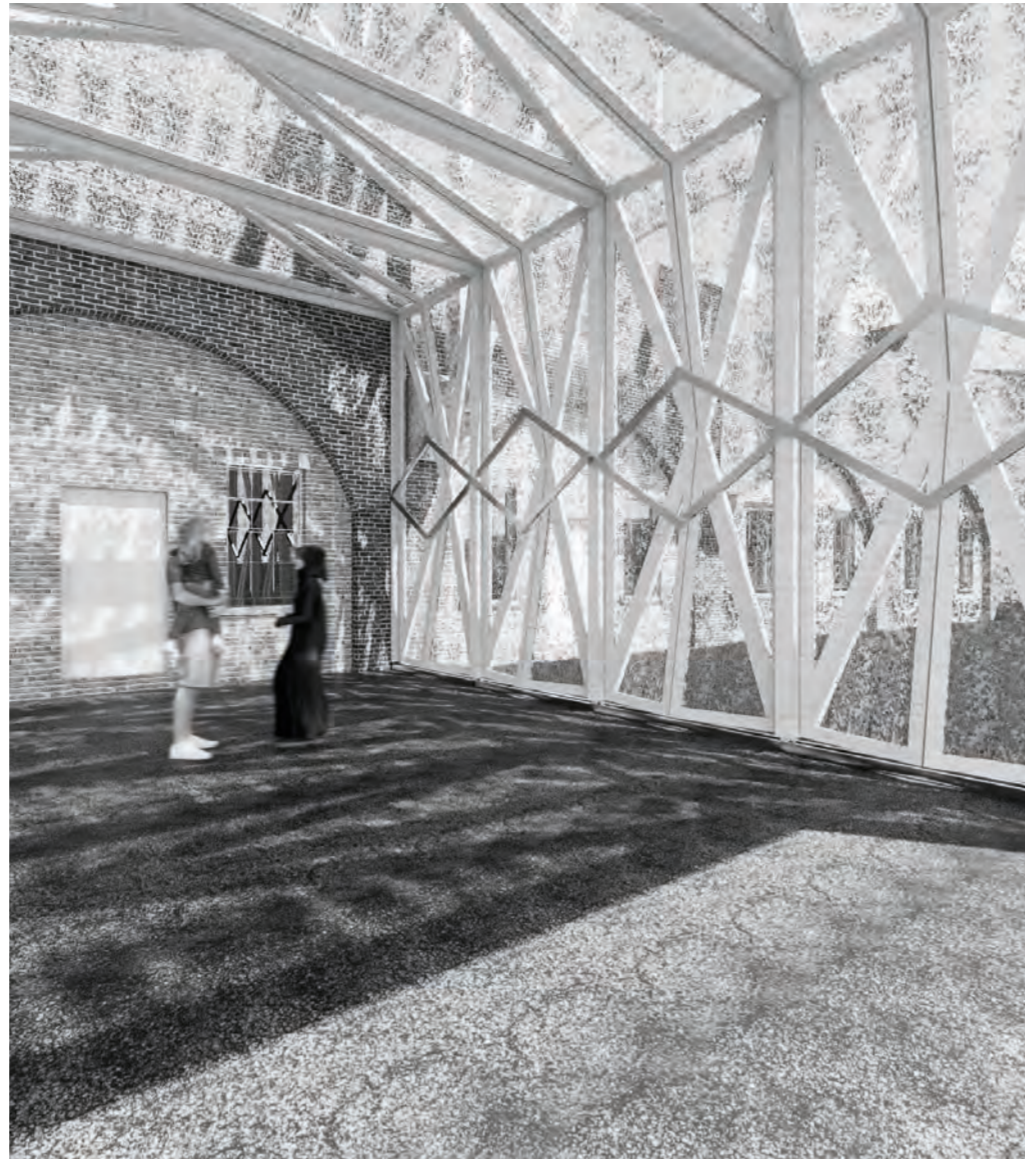
03 COMMUNITY WORKSHOP

02 MENS BEDROOM

50 @ A2



THE CONCEPT BEHIND THE AWNING IS FROM THE QUESTION 'CAN SPACE EXPAND AND CONTRACT TO CATER TO CHANGING VOLUMES OF PEOPLE?'. THIS AWNING CREATES ADDITIONAL SHELTERED SPACES, ADJACENT TO THE MAIN BUILDING ROOMS, WHERE INDOOR AND OUTDOOR SPACES MERGE BENEATH THE CANOPY. THIS SPACE CAN BE ADAPTED TO REFLECT OCCUPANT CAPACITY OR ALTERNATIVE FUNCTIONS.

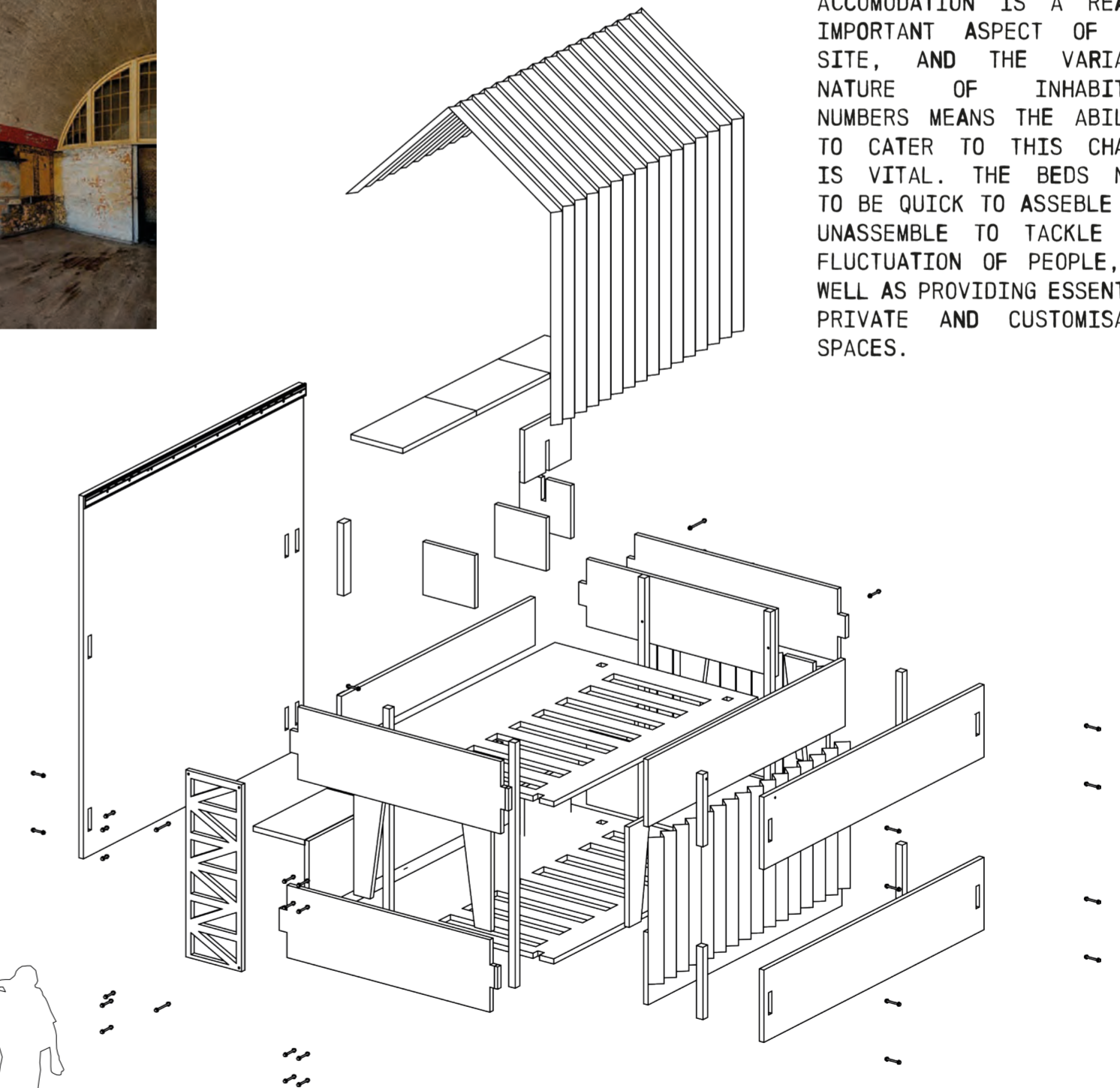
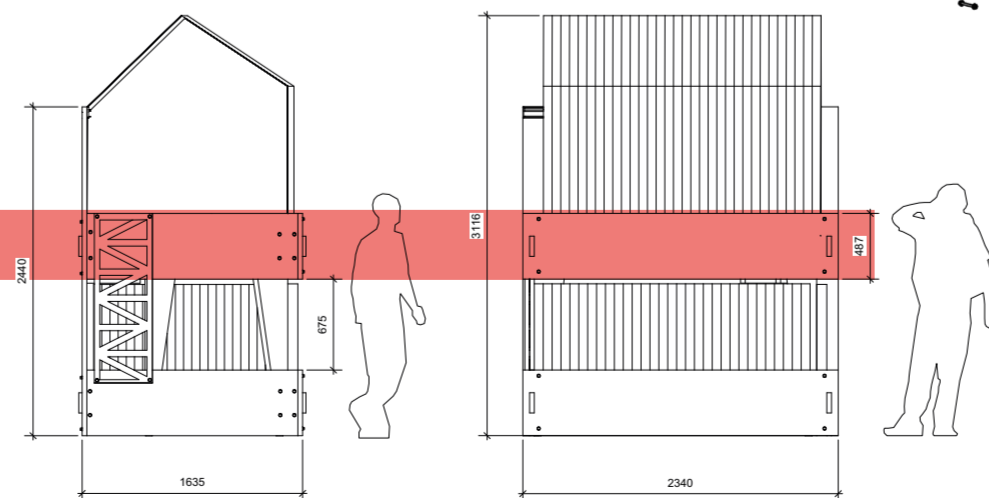


ACCOMODATION INTERIOR



THE BEDROOM IS FORMED AROUND MODULAR BED UNITS THAT MAKE UP THE SPACE. THE BUNK BEDS ARE POSITIONED IN DIFFERENT ORIENTATIONS AS WELL AS OVERHEAD TO MAXIMISE CAPACITY. THE MODULAR CONSTRUCTION OF THE BEDS MEANS MORE OR LESS BEDS CAN BE PUT TOGETHER DEPENDING ON THE VOLUME OF PEOPLE COMING THROUGH THE SITE.

ACCOMODATION IS A REALLY IMPORTANT ASPECT OF THE SITE, AND THE VARIABLE NATURE OF INHABITANT NUMBERS MEANS THE ABILITY TO CATER TO THIS CHANGE IS VITAL. THE BEDS NEED TO BE QUICK TO ASSEMBLE AND UNASSEMBLE TO TACKLE THE FLUCTUATION OF PEOPLE, AS WELL AS PROVIDING ESSENTIAL PRIVATE AND CUSTOMISABLE SPACES.



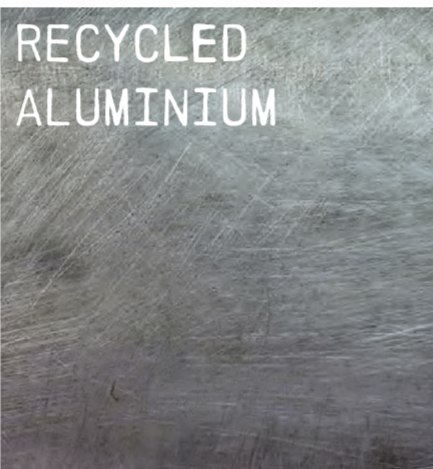


WORKSHOP PANELS CREATED FROM MILLED LIFEJACKET WASTE, CAST INTO BIORESIN

THE PRIMARY MATERIALS USED ON SITE ARE LISTED AS SEEN. THESE ARE THE MATERIALS THAT MAKE UP THE CORE SUBSTANCE OF THE DESIGN. ENVIRONMENTAL IMPACT WAS REALLY IMPORTANT WHEN SELECTING MATERIALS, OPTING FOR LOW CARBON ALTERNATIVES AND NATURAL MATERIALS WHERE POSSIBLE.



SITE MATERIALS



RECYCLED ALUMINIUM

RECYCLED ALUMINIUM IS USED TO CREATE THE TEMPERATURE REGULATION TUNNEL, AS WELL AS MUCH OF THE FURNITURE IN THE RECEPTION AND DOCUMENTATION ROOM. ALTHOUGH ALUMINIUM HASN'T GOT THE LOWEST CARBON FOOTPRINT, SOURCING IT FROM COMPANIES LIKE 'HYDRO' (WHO USE 75% RECYCLED ALUMINIUM) DRASTICALLY REDUCES THE CARBON FOOTPRINT.



GLULAM TIMBER

GLULAM TIMBER WILL BE USED FOR THE MAIN FRAMEWORK OF THE NEW STRUCTURE, FORMING THE WALLS AND FRAMES FOR THE WORKSHOP. GLULAM IS A GREAT CHOICE DUE TO ITS CARBON NEGATIVE QUALITIES AND COMPARABLE STRENGTH TO STEEL.

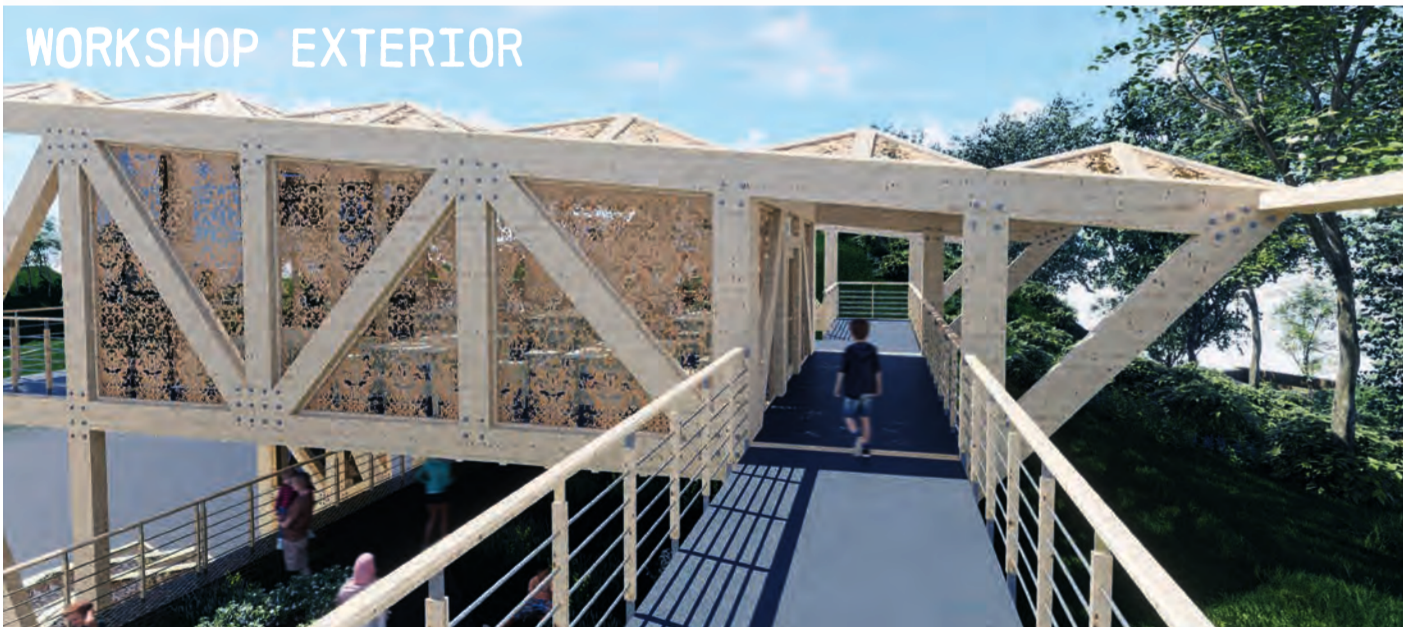


RECYCLED PVC BLOCK

INFLATABLE BOATS AND LIFEJACKETS ARE PRIMARILY MADE UP OF PVC. RECYCLING THEM INTO A SOLID MATERIAL COULD HELP PREVENT THE MASS GOING TO LANDFILL. COMpressing THE MATERIAL AND USING IT AS DECKING ALONG THE HIGHLINE AND WALKWAYS COULD BE AN EFFECTIVE SOLUTION.



AS ONSITE MATERIALS ARE LIMITED AND THE ISSUE OF CHANNEL CROSSINGS GROWING, FORMULATING SOLUTIONS THAT KEEP MATERIAL OUT OF LANDFILL WHILST ALSO CREATING A TALKING POINT IS IMPORTANT. POLITICAL STATEMENTS LIKE THE LIFEJACKET GRAVEYARD LEFT OUTSIDE OF PARLIMENT SHOW HOW MANY MIGRANTS HAVE MADE THE DANGEROUS CROSSING, IS A FURTHER REMINDER OF THE WASTE PRODUCED AFTER THESE CROSSINGS. BELOW IS A DINGHY GRAVEYARD ALL FROM CHANNEL CROSSINGS, MANY DAMAGED BEYOND USE, PROVIDING OPPORTUNITY TO REPURPOSE THIS WASTE.



WORKSHOP EXTERIOR



WORKSHOP INTERIOR



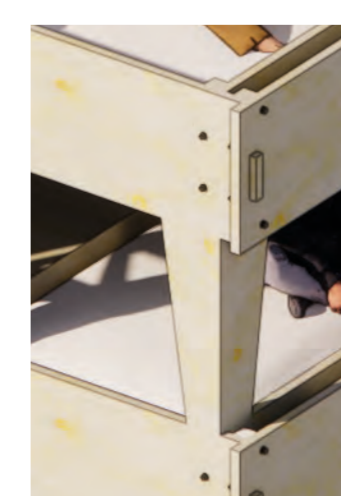
TO COUNTERACT THE MASS WASTE OF WATER SAFETY EQUIPMENT FROM CHANNEL CROSSINGS, REPURPOSING OLD LIFEJACKETS CAN HELP REDUCE LANDFILL. CASTING MILLED LIFEJACKETS IN BIORESIN TO CREATE STRUCTURAL PANELS IS A VIABLE APPROACH TO REDUCE WASTE.



BIORESIN



PLYWOOD



PLYWOOD WILL BE USED FOR MUCH OF THE FURNITURE ON SITE, INCLUDING THE BED FRAMES, WORKBENCHES AND STOOLS. THE PLYWOOD WILL BE CNC CUT SO THERE IS MINIMAL WASTE.

