

REVIT MODEL



LOOM LIBRARY



REIMAGINING A CHILDREN'S LIBRARY TO EMPOWER THE NEXT GENERATION OF READERS

Loom Library is a children's library in Leeds, occupying a historic cloth trading hall from the early 1700's. The site itself was instrumental in developing the city, enmeshing textiles in its very fabric.

Loom Library aims to create an exciting and immersive narrative around learning, empowering children through literature to take charge of their futures. Introducing reading in an engaging manor from a young age so that more children can reap the cognitive, social, and developmental benefits throughout their lives.

Focusing on children up to the age of ten, thus targeting the key years of literacy development. Investing in the city's future citizens through education and inspiration.

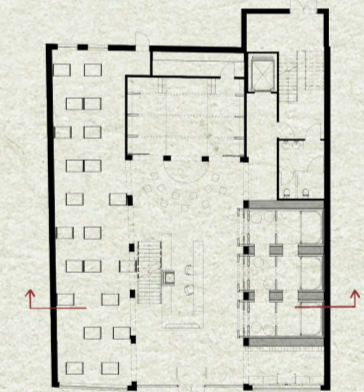
The concept of Loom Library is to create an environment full of possibilities, supplying the tools a child needs to enhance their own learning and creativity. A space that exists in support of imagination, not in dictation of it. An environment to be defined by storytelling, taking on life through literature. Cultivating connection around stories.



Over the past decade, nearly 800 libraries across the UK have been closed due to public spending cuts. These closures not only exacerbate an academic gap in social class but restrict the pleasure of reading and exercise of imagination. Particularly during the cost-of-living-crisis, having books at home is becoming increasingly more of a luxury. As a result, libraries are more important than ever to ensure free access to literature. Their value has withstood the test of time and yet modern technology presents a new challenge – how to engage younger generations, who are better versed at navigating the internet than literature?

Not only is academic reading valuable, fiction in particular is foundational in developing theory of mind and imagination. In fact, for those born into poverty, reading for pleasure during childhood has been shown to give better odds of overcoming poverty late in life.

SECTION AA



SITE

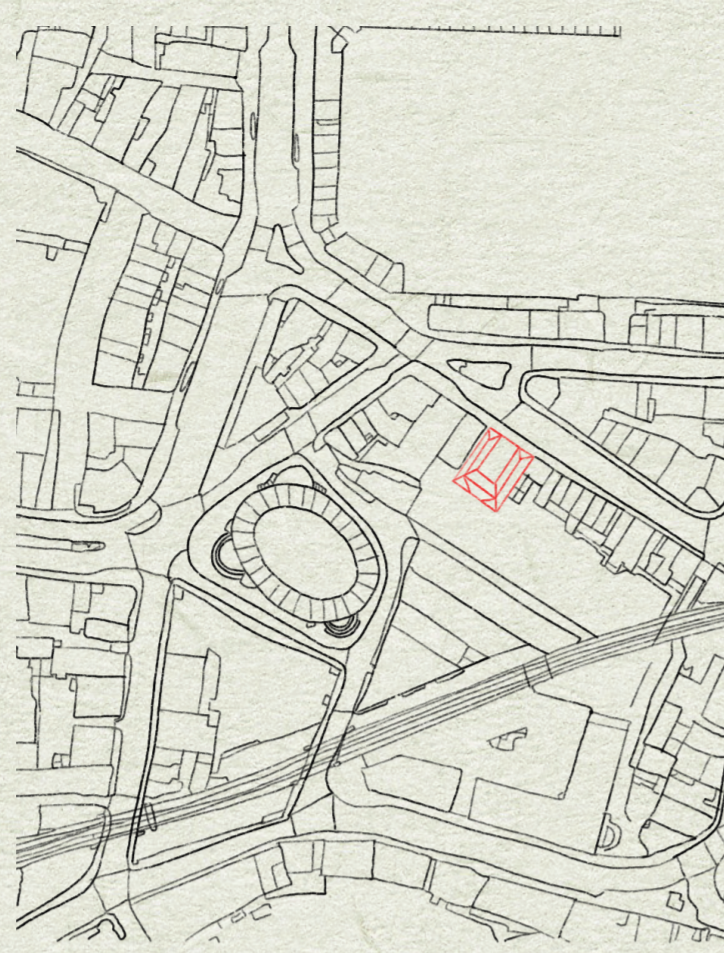
FIRST WHITE CLOTH HALL - Leeds

Located in the city centre of Leeds, the building is surrounded by a bustling, lively environment. Leeds Station is only a 9-minute walk away.

First White Cloth Hall was constructed to anchor the cloth trade in Leeds. The hall became instrumental in developing the city.

Historic England named First White Cloth Hall on the At Risk Register in 1999, and by 2010 the hall was in a state of complete dilapidation and disrepair.

In 2017 developers acquired the building and set out on a heritage restoration and redevelopment scheme. Maintaining the site's history and quality was essential.



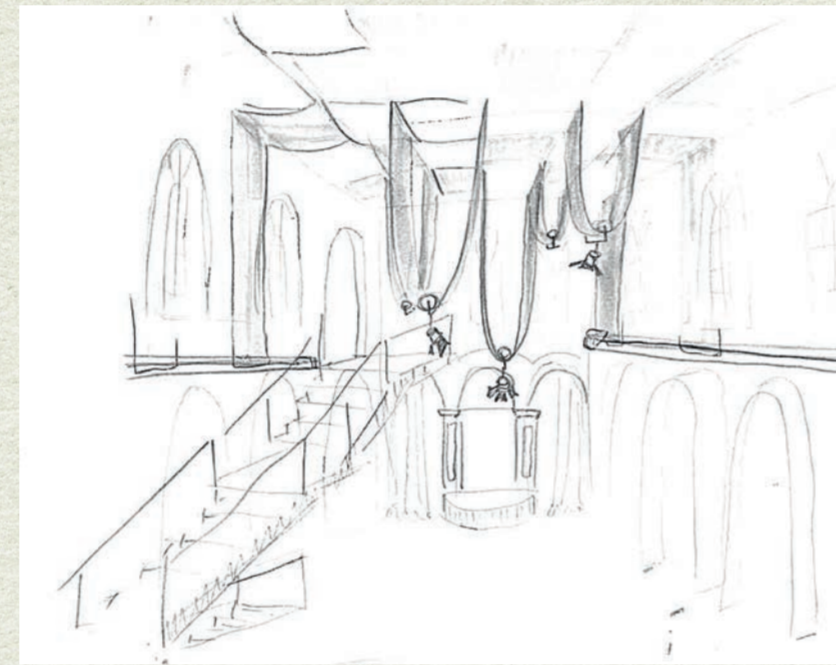
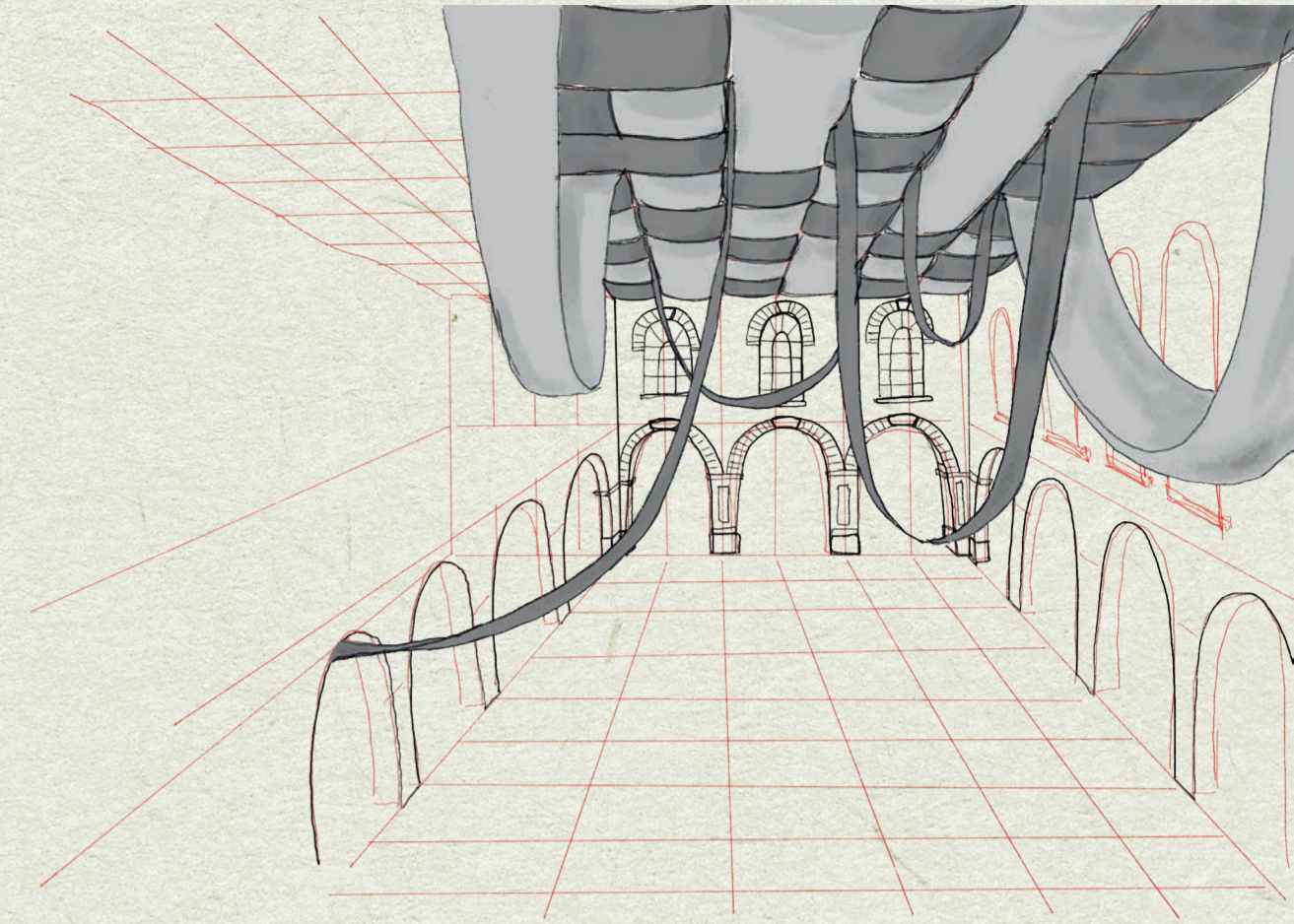
CONCEPT STRATEGY UNRAVELLING TAPESTRY

WHAT IF NARRATIVE DEFINED PHYSICAL SPACE?

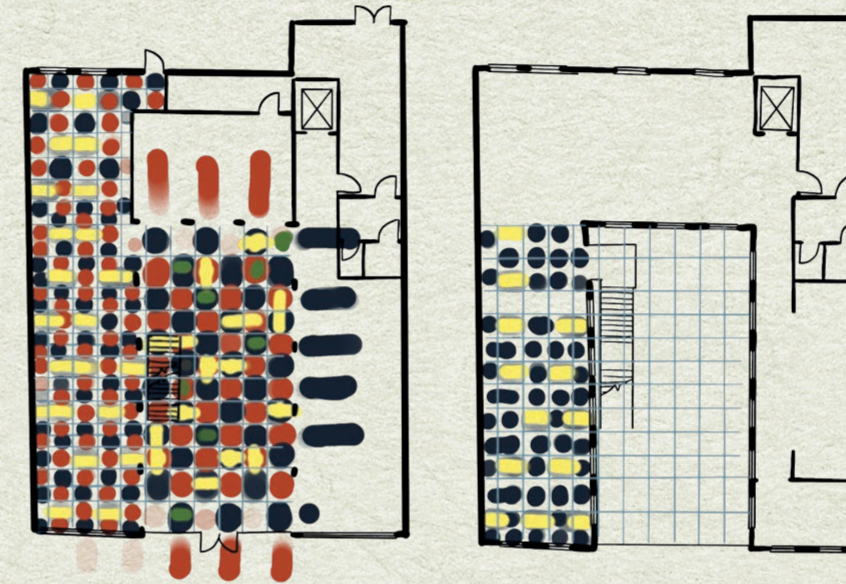
History and narrative meet through the idea of woven space. First White Cloth Hall's original life as a cloth trading hall is honoured in a physical and metaphorical manifestation.

Storytelling is imagined as a tapestry, the intricate relationship of many different threads culminating in one final narrative. Thus, the story of Loom evolves from the idea of woven space. A 'tapestry' unravels into the building. It is intertwined in the fabric of the space, becoming part of the building's story.

INITIAL CONCEPT SKETCH



STRATEGY DIAGRAM 1 - WOVEN PATTERN

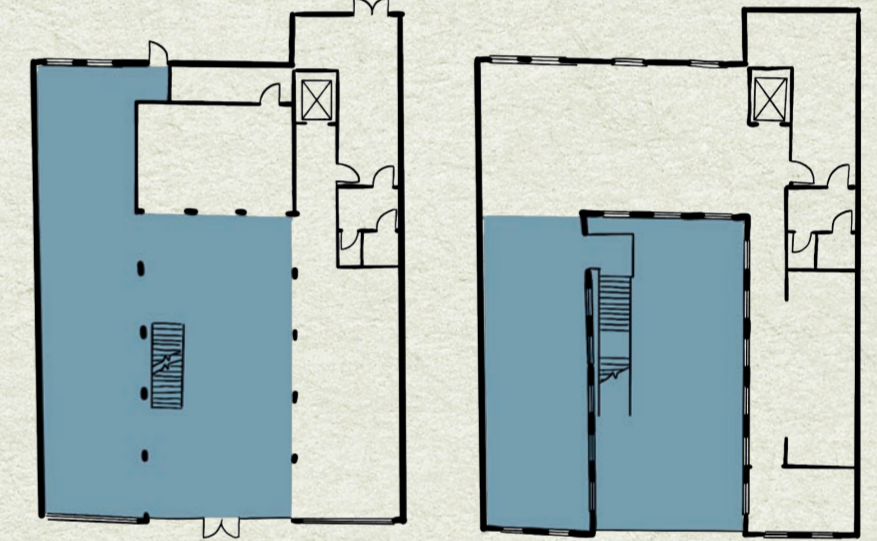


Vertical Weave

Horizontal Weave

Draped Weave

STRATEGY DIAGRAM 2 - TEXTILE ZONING



CONCEPT STRATEGY THEATRE SETS

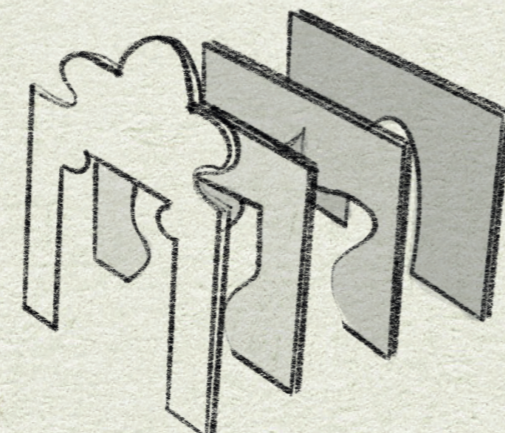
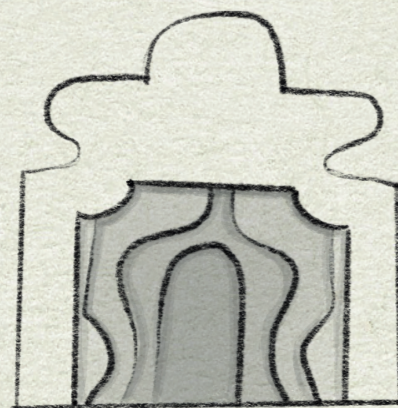
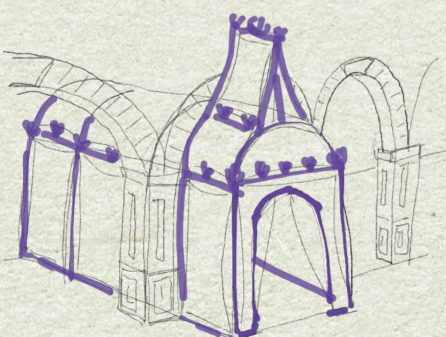
WHAT IF THE AUDIENCE WERE PART OF THE STORY?

Taking inspiration from the layering of sets to create a multidimensional setting. Users are able to travel vast distances with a mere few steps and a little creativity. Implementing theatrical flats and scrim in the materiality of Loom, strengthens the connection to play and performance.

Loom exists to encourage reading and imagination, not to define it. It is important that the magic of the space is not overly defined. Imperfect illusions invite imagination from users to maintain the whimsical nature. A child's perspective becomes an additional layer of the atmosphere – one that is personal and unique to each child.



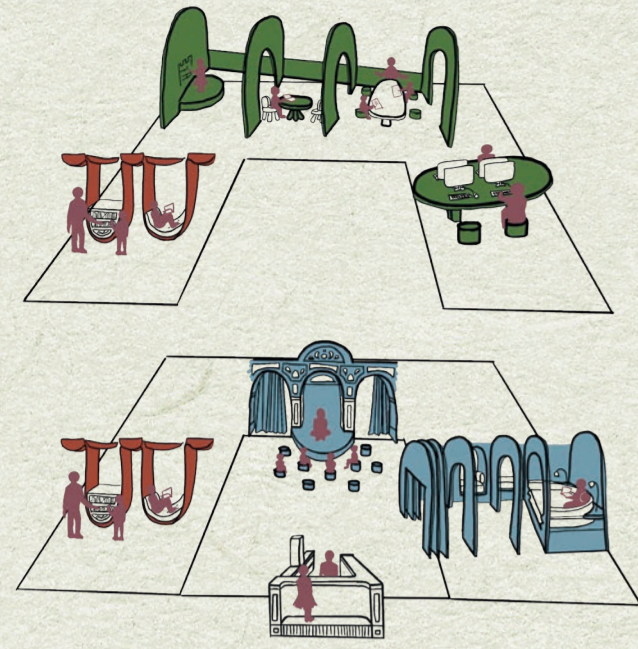
Concept Montage



SECTION BB

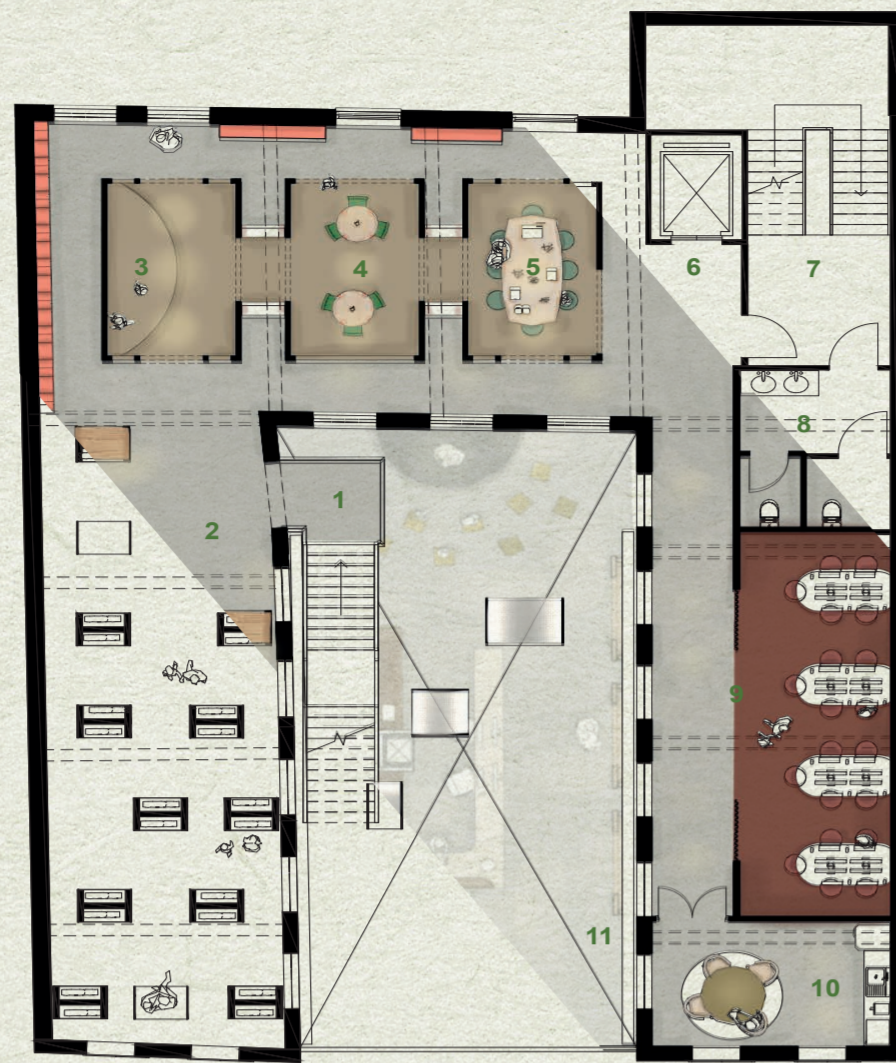


KEY FEATURES DIAGRAM



- READ
- IMAGINE
- EXPLORE

FF



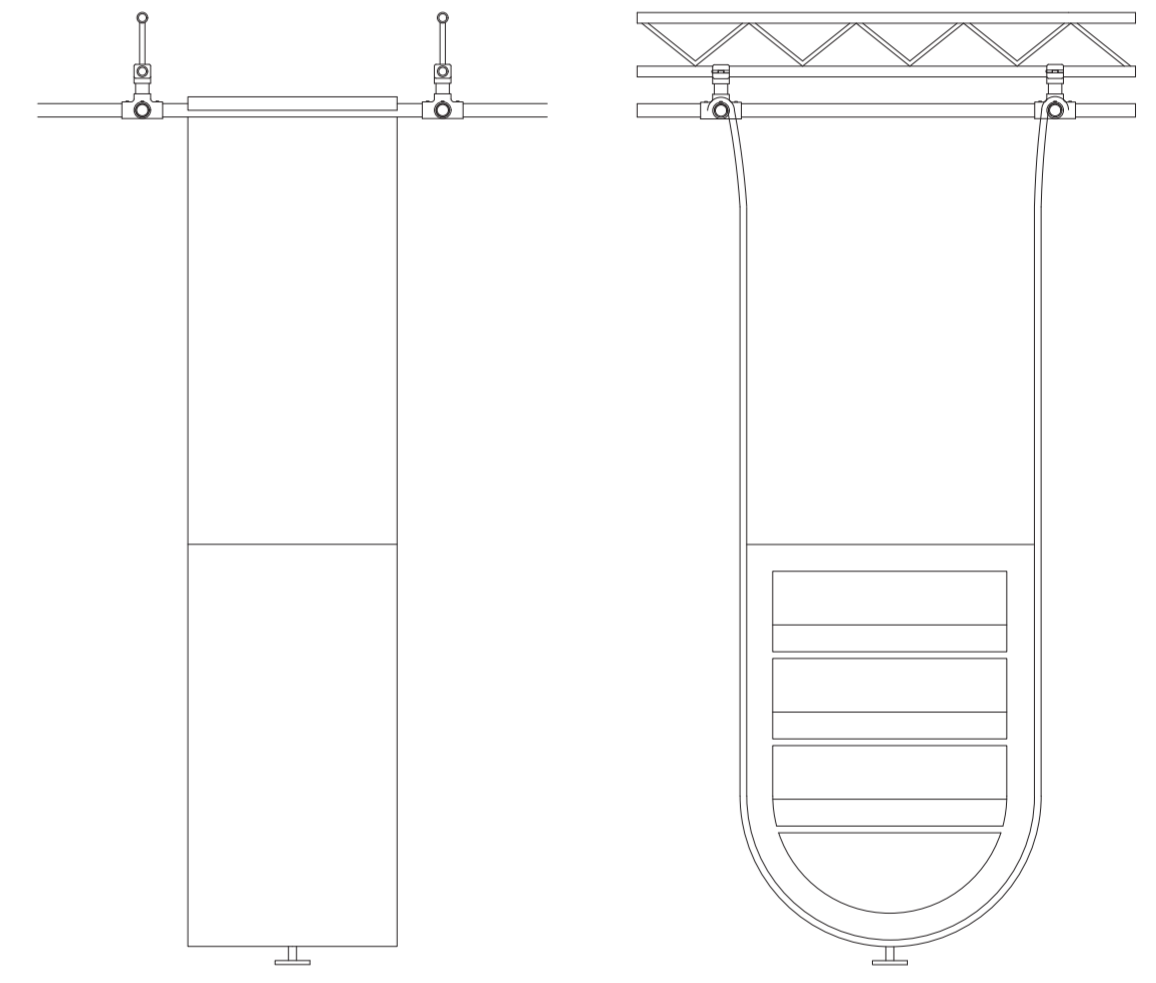
KEY

- 1 Stairs to Ground Floor
- 2 Older Year Books
- 3 Mural Room
- 4 Writing Room
- 5 Workshop Space
- 6 Lift to Ground Floor
- 7 Protected Fire Stair
- 8 W/C
- 9 Media Room
- 10 Librarian's Lair
- 11 Concealed Motor Casing

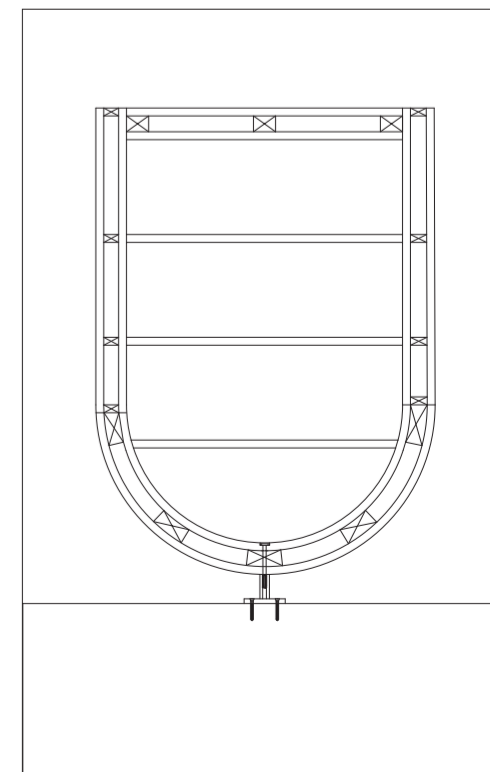
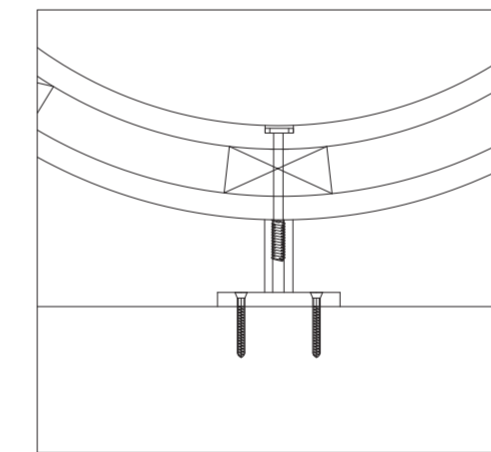
MASTER MOODBOARD



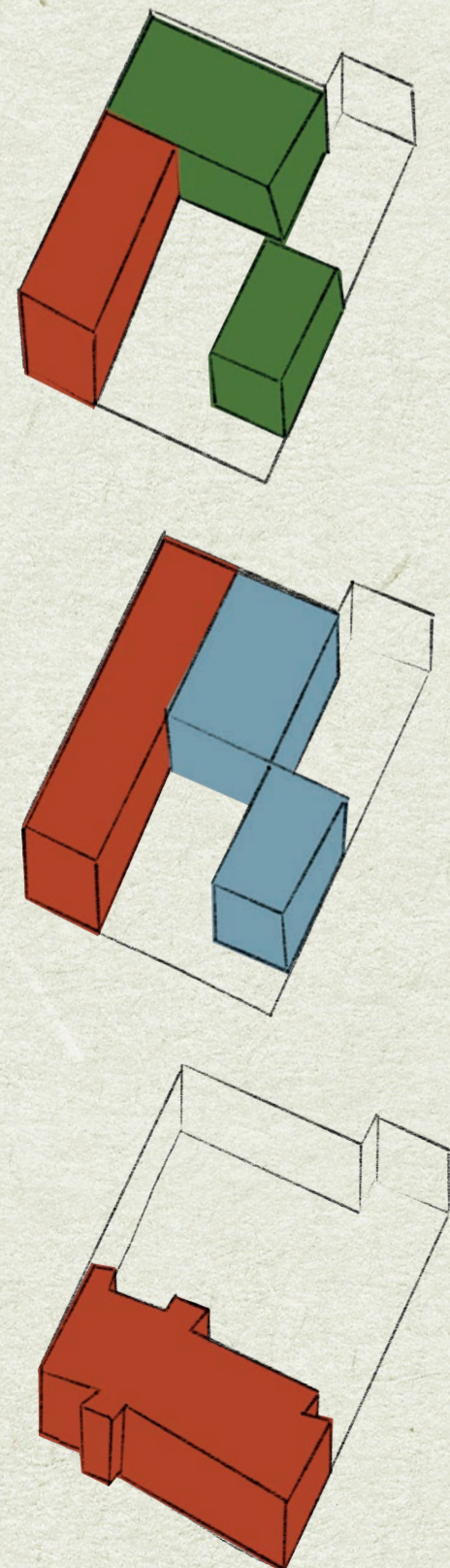
Scrim fabric becomes a key material in Loom Library. Commonly utilized in stage production, scrim has the unique quality to alter opacity with lighting. It lends a mysterious, dazed effect. The scrim is sourced second-hand from local theatres and repurposed to give it a new life.



BESPOKE BOOKCASE



ZONING DIAGRAM



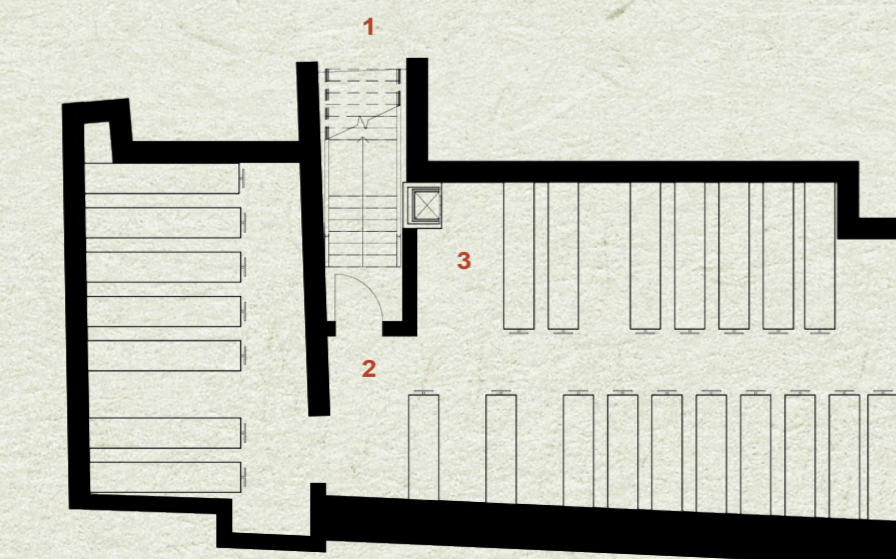
GF



KEY

- 1 Entrance
- 2 Security Sensors
- 3 Librarian's Desk
- 4 Stairs to First Floor
- 5 Book Checkout/Return
- 6 Younger Year Books
- 7 Immersive Reading Rooms
- 8 Dumbwaiter to Basement
- 9 Stairs to Basement
- 10 Story Stage
- 11 Theatre
- 12 Prop Closet
- 13 Lift to First Floor
- 14 W/C
- 15 Protected Fire Stair

B



KEY

- 1 Stairs to Ground Floor
- 2 Archives
- 3 Dumbwaiter to Librarian's Desk

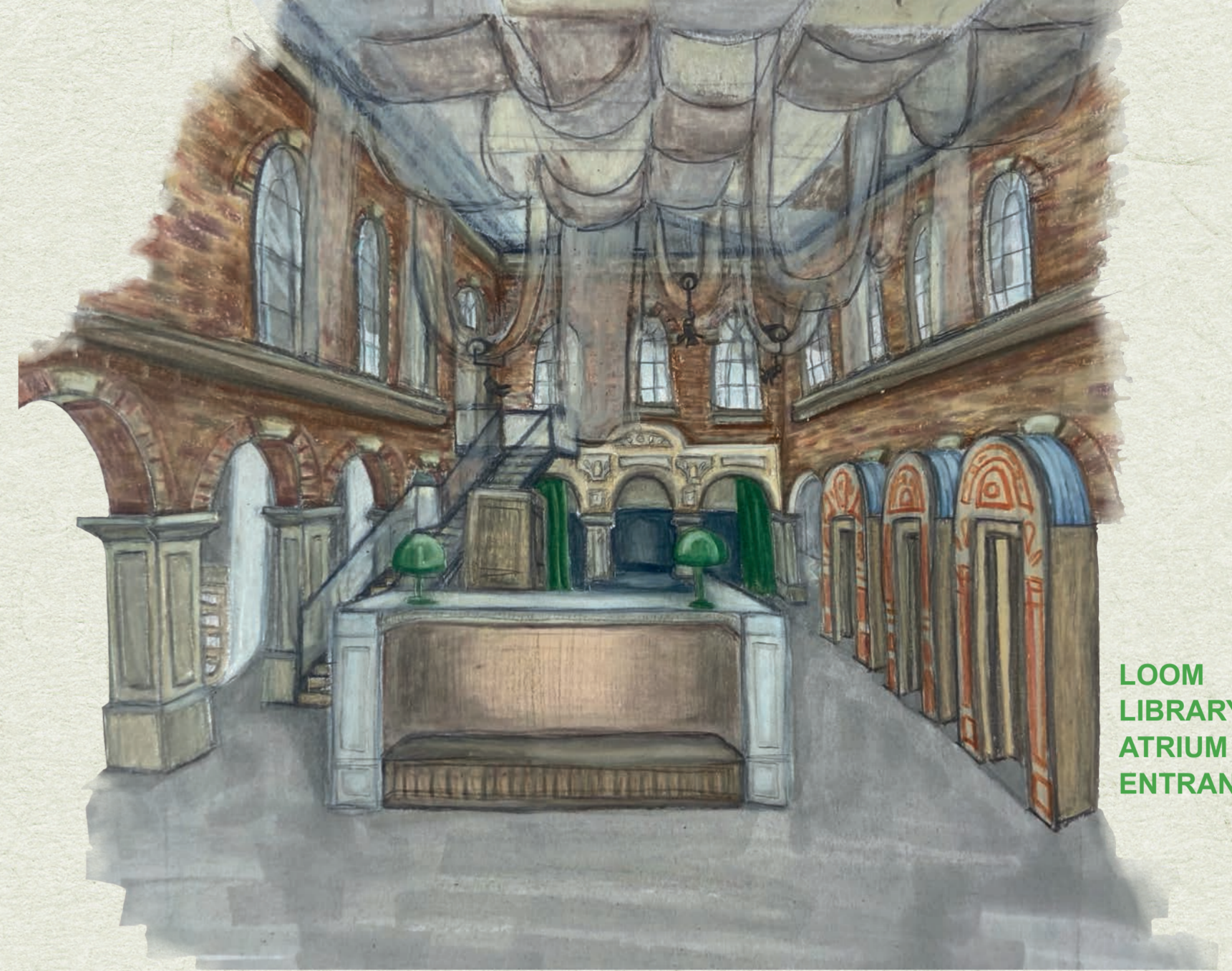
STORY STAGE



Storytelling takes on many forms, thus the story stage must adapt to various needs. A relationship evolves between this site's history and the future use of space. With a grand façade extending from the existing limestone masonry, the stage draws visitors through the library. By spilling into the glass atrium, the stories themselves are given the volume of the hall, drawing listeners from its depths. The finish is rich in texture and colour, yet the simplicity of form and playful features ground the space. Each finish is a tactile interaction to become a more interactive experience for children. The story stage is a setting to let one's imagination run wild.



- 1 Seersucker in 0006 (Kvadrat)
- 2 Pasco Acoustic Stage Curtains (Direct Fabrics)
- 3 Stairville Tinybright IP W10 3000k (Thomann)
- 4 EVE TF-20X Spotlight with Fresnel Lens (Chauvet DJ)
- 5 Scrim Fabric
- 6 Drop 0961 (Kvadrat)
- 7 Duke 0017 (Kvadrat)
- 8 Cèpe Pouf in Small (Arrmet)
- 9 Oak Veneer
- 10 Existing Limestone Masonry

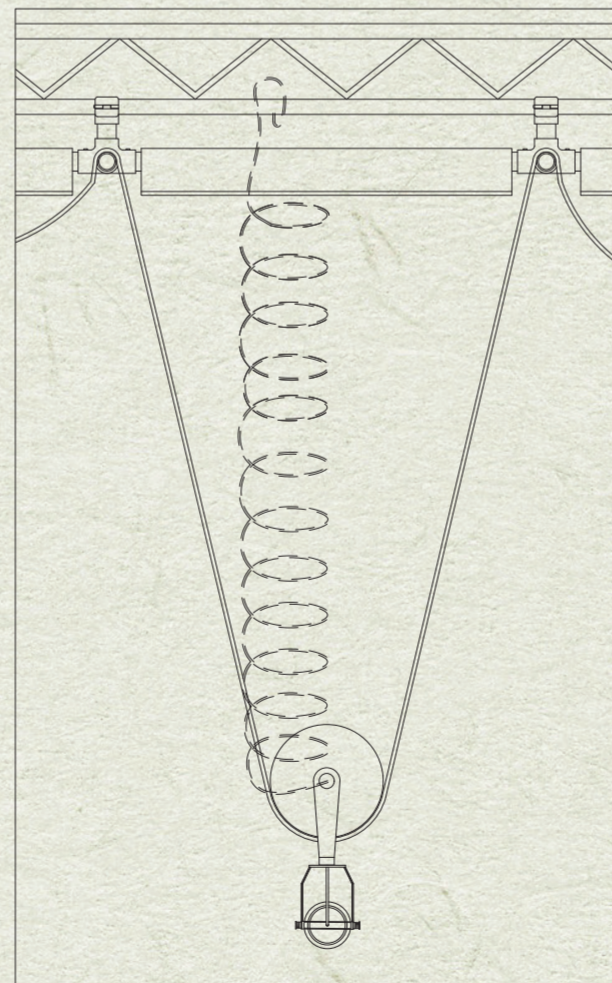


LOOM LIBRARY ATRIUM ENTRANCE

TECHNICAL SECTION



Rollers of various weights are distributed through the draped fabric. Motorized poles, concealed on either side of the glass atrium, connect fabrics on either end. Set on a slow loop, the motors coil and unwind elements of the weave. Creating a playful feature which adjusts the lighting over the course of the day. Not only does the woven ceiling interact with natural light, draped fabrics serve as host to theatrical lighting fixtures.

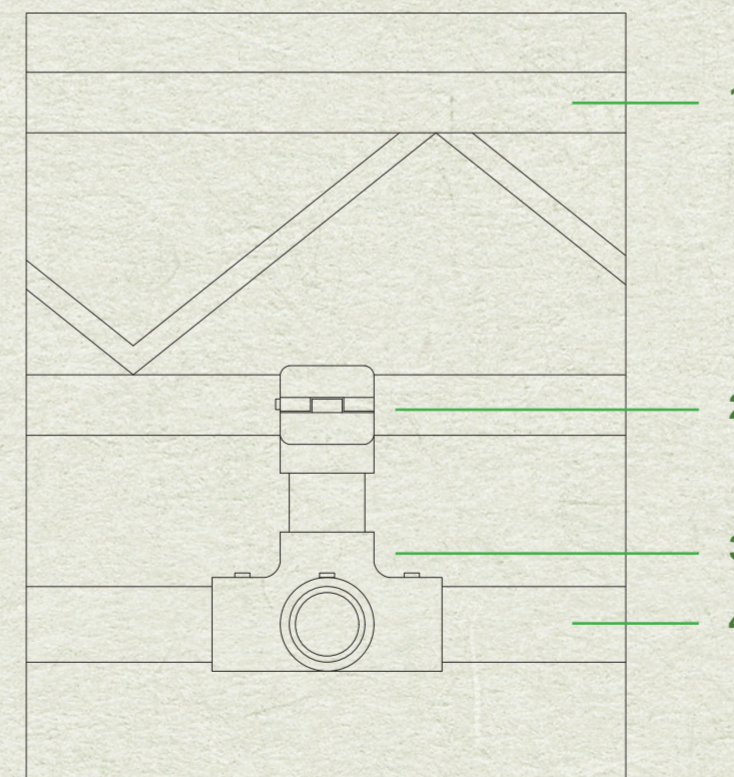


WEIGHTED LIGHTING FIXTURE

- Weighter Roller
- Stage Light
- Curled electrical cable

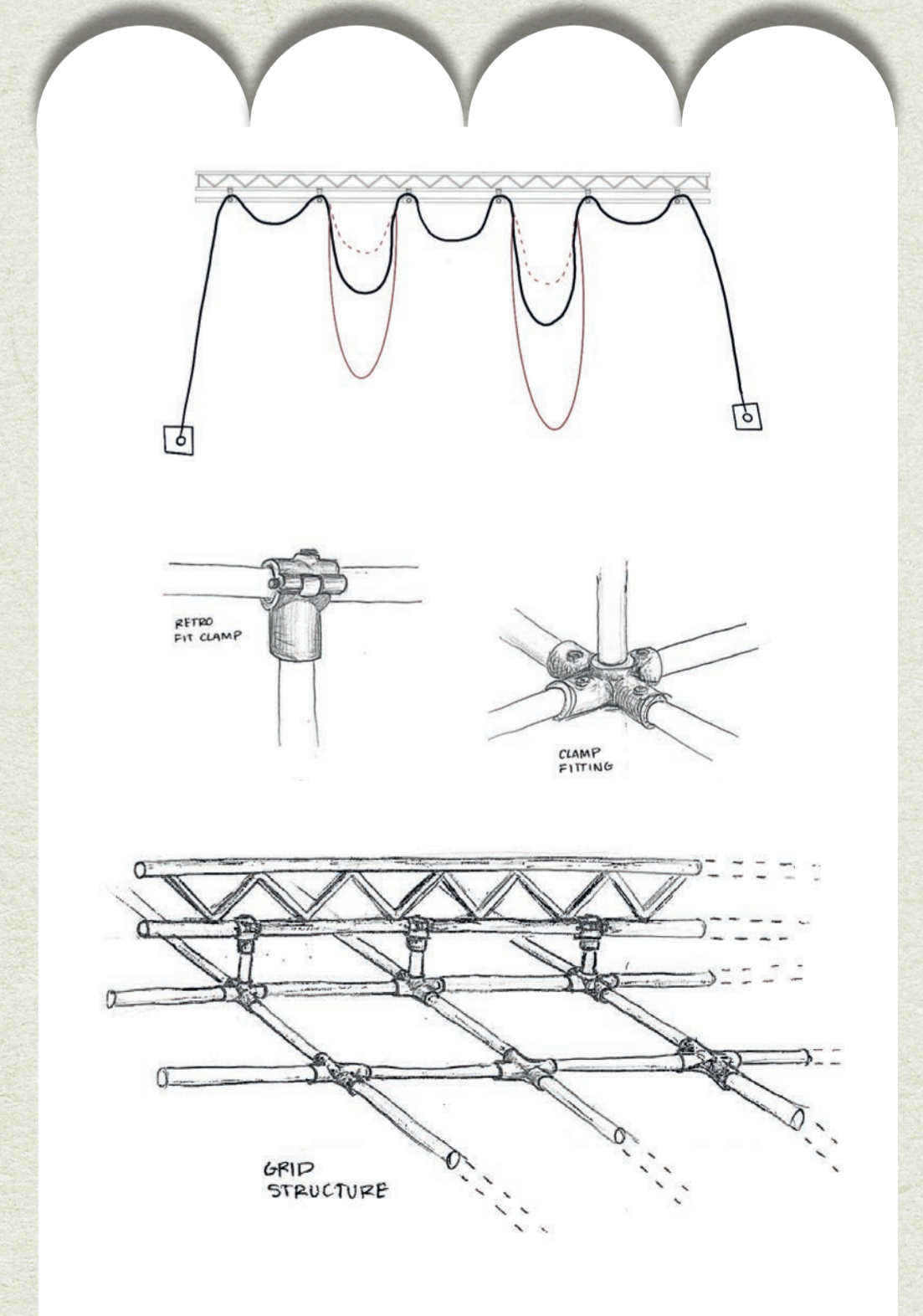


SCAFFOLDING SUPPORT STRUCTURE



PRIMARY AND SECONDARY STRUCTURE JOINERY

- 1 Ladder Truss
- 2 Retro Fit Clamp
- 3 4 Way Cross Tube Clamp
- 4 Scaffolding Tube (48.3mm)

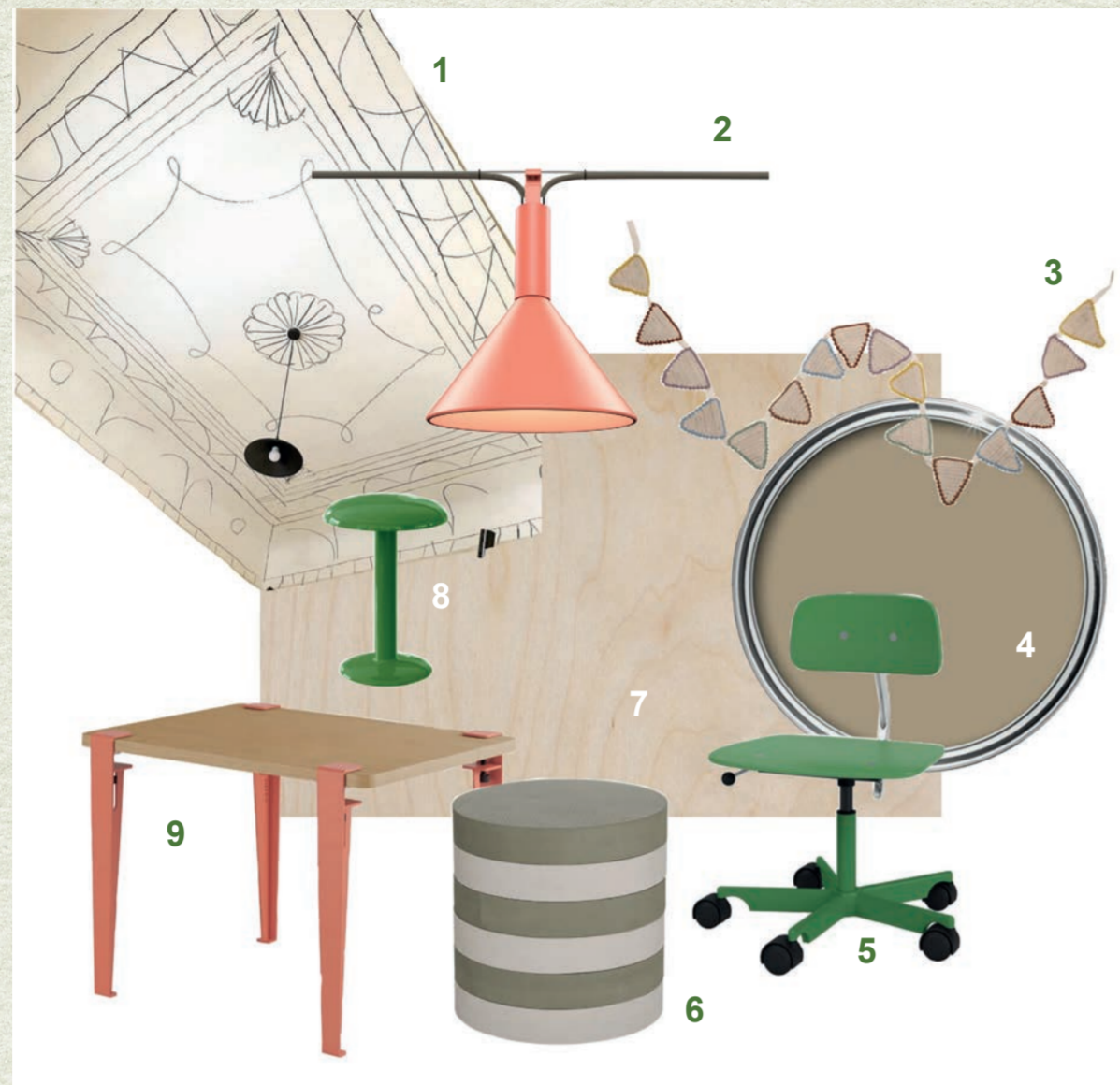


GRID STRUCTURE

Workshops

MATERIALS MOODBOARD

- 1 Illustrated Ceiling Mural
- 2 Lumo Wire in Orange (Zero Lighting)
- 3 Bloomingville Mini Celestine Garland (Connox)
- 4 Chalkboard Paint in Sandstone (HQC)
- 5 Montana Kevi Kids 2533J Chair in Parsley (Connox)
- 6 OYOY Iro Stack Stool in Olive/Clay (Scandiborn)
- 7 Birch Plywood
- 8 Gustave Residential Portable Lamp (Flos)
- 9 TipToe Children's Desk in Falmingo Pink (Connox)
- 10 (Connox)



Literacy development can be broken up into three key stages, thus inspiring the three segments of the workshops. Together they provide ample space to aid literacy development in children.

The physicality of the workshops evolved from the idea of a cardboard box. A cardboard box can be anything to a child. It is a domain of ownership. There is freedom to draw on, rip, cut, bend, break. A cardboard box becomes whatever a child needs it to be. The workshops take a similar approach. Simple framing suggests an interior and exterior to the space although there is no firm definition. Chalkboard walls allow for untethered creativity and expression as the primary decoration of the space will come from kids as they define the atmosphere.



Immersive Reading Rooms

MATERIALS MOODBOARD

- 1 Birch Plywood
- 2 Interlace 0744 (Kvadrat)
- 3 NJP Table Lamp (Louis Poulsen)
- 4 Troldekt Paneling
- 5 Dots 4662 in 37 Terra Red (Vibia)
- 6 Classic Smooth MAU-01 (Clayworks)
- 7 Classic Smooth BLU-05 (Clayworks)
- 8 Classic Smooth NUD-03 (Clayworks)
- 9 Konoha Wall Light (Marset)
- 10 Fuse 3 in Matt White (Astro Lighting)
- 11 Monica Livingstone (Smarin)
- 12 Pixel Wall Panel in PE22 (Acoufêlt)
- 13 Brigitte Cushion Polvere (Poemo Design)
- 14 Apparel in 0463 (Kvadrat)
- 15 Sabi in 0551 (Kvadrat)
- 16 Relate in 0711 (Kvadrat)



The reading rooms serve as a cosy escape to disappear into a good book. Taking inspiration from theatre, the rooms are segmented by a series of flats. The colour palette is largely inspired by a horizon, a metaphor for the journey taken upon while reading. Additionally, warm background colours improve reading performance. In essence the reading rooms transport readers to an entirely new setting within a mere few steps.



REVIT MODEL

