

TENTH^ΔALLE

MIRUNA STROESCU

EXPLORATORY QUESTION:

Can design restructure the social bias surrounding homelessness?

"The strength of the stigma attached to the 'homelessness' label equals that for mental hospitalization."
(Phelan, Link, Moore and Stueve, 1997)



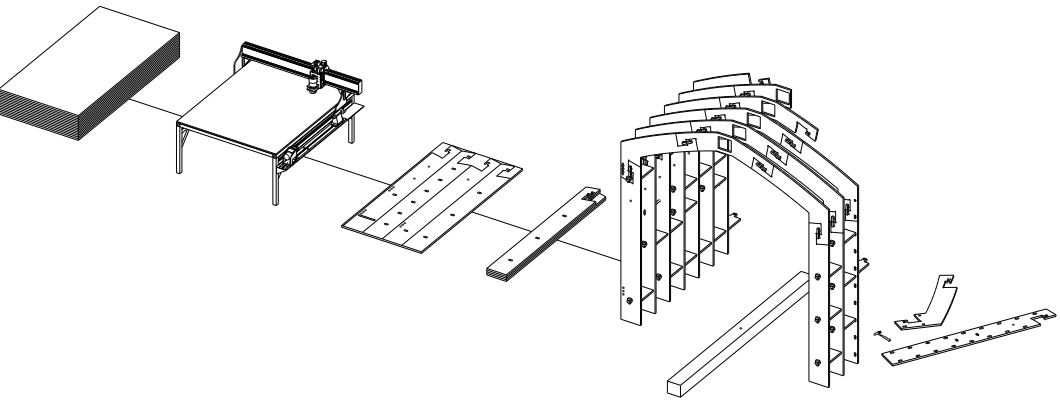
SOMETIMES IT S NOT THE MONEY, IT S JUST SAYING HELLO.

THE BRIEF

Occupying the **German Gymnasium** in London, **TENTHALLE** provides a **platform for communication** between the public and the homeless community by exploring and **up-scaling** the social factor of **quotidian activities**.

Focusing on **safety** and **accessibility**, the space is designed to respond to the **primary needs** of the user, and manifests as a **support network** for the community, offering access to a variety of resources and facilities during and after their stay.

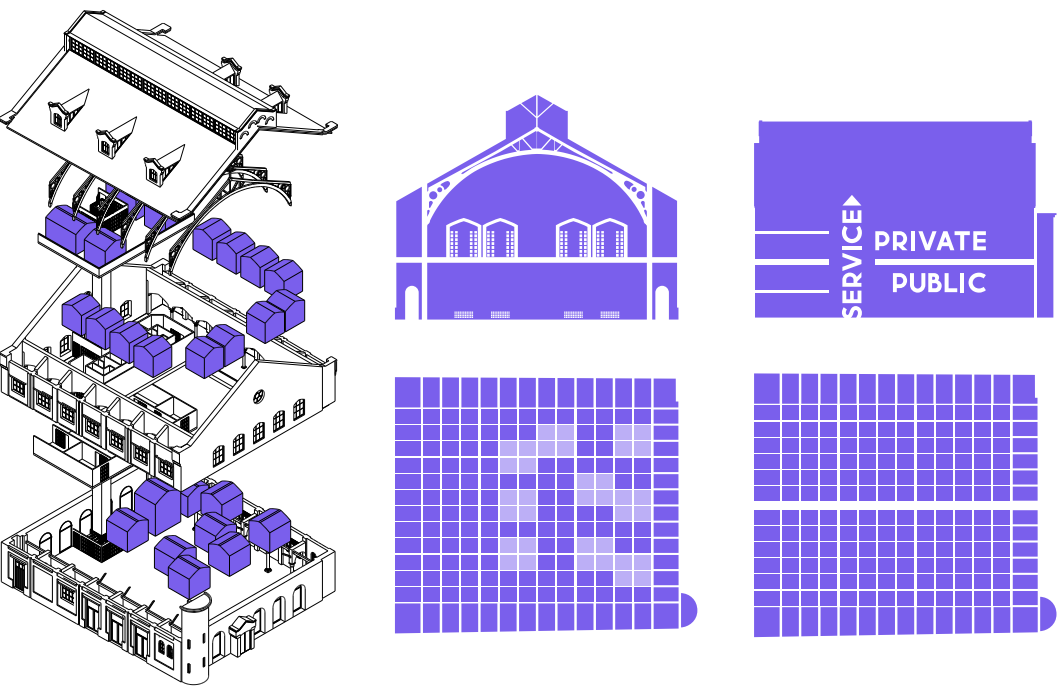
In partnership with organizations such as Invisible Cities and Accumulate, **TENTHALLE** is able to offer its residents the opportunity to develop and explore a **range of skills**, preparing and aiding them in their journey. The user is provided with the opportunity to communicate with the public and share their story, while having access to **full training** and **work opportunities**.



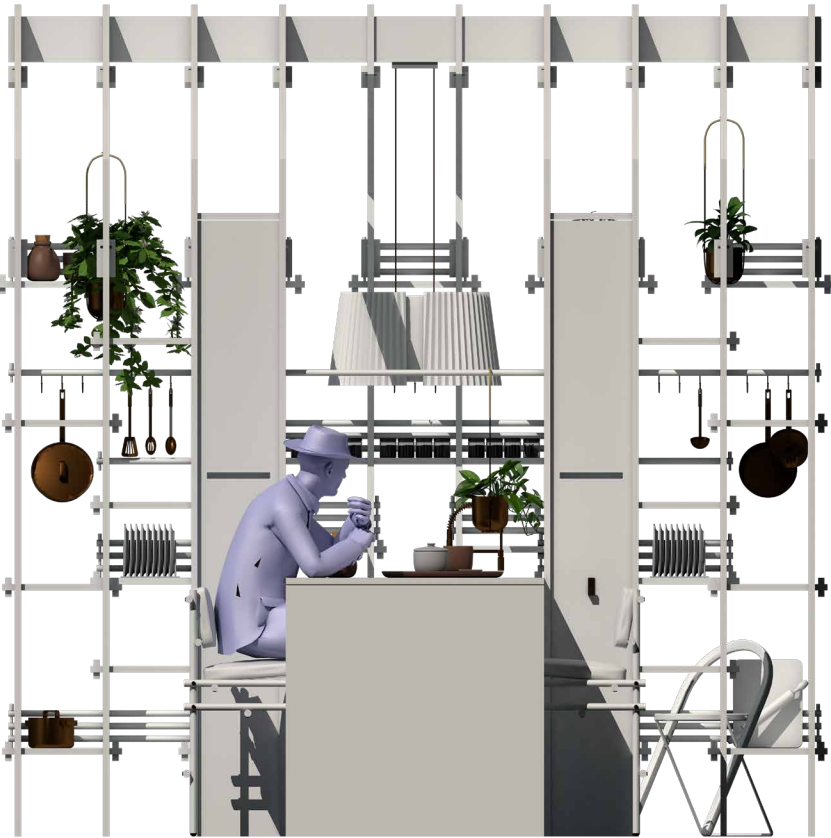
CONCEPT

The design simulates the **organic development** and **density** of a community by transforming the space into a **tent city**.

Following a **circular design strategy**, the structures have been created to design out waste through the use of **CNC cut plywood**, while leaving the fabric of the host building intact. This generates a **modular** structure which can be transported and assembled with ease.



THE TENT CITY



USER PROFILE

INTRODUCING DECLAN

AGE 60
HOMELESS 2 YEARS

Declan has been rough sleeping in London because he lost his accommodation due to the government's new benefits system. Declan receives no support from the local authorities, however, he feels supported by the community of homeless people surrounding him. Declan is concerned about the well-being of his community, he has noticed an increasing number of young people camping out in tents and sleeping bags on the streets of London, people developing substance abuse as a coping mechanism, as well as a lack of access to mental health services. Declan often experiences abuse and harassment. On Tuesday a group of young people urinated and stepped on him while he was asleep, breaking the fingers of his right hand. Declan has been most affected by the attitudes of the public, often not being acknowledged.



USER JOURNEY



Having arrived at Tenthalle, Declan signs in for a health check at the clinic.



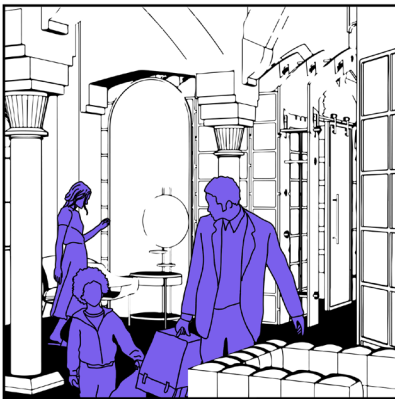
While awaiting his appointment, Declan is introduced into the residential program. Here he has the opportunity to meet other members of the community.



Declan meets a mental health professional and receives a schedule of his upcoming appointments.



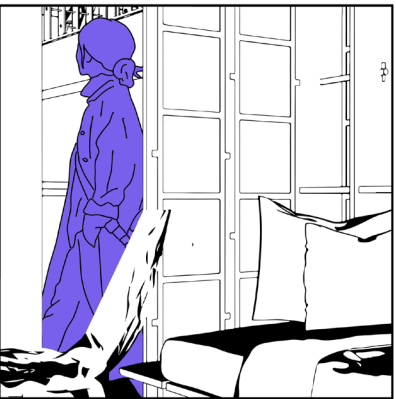
Ready to settle in, Declan uses the laundrette to wash his clothes.



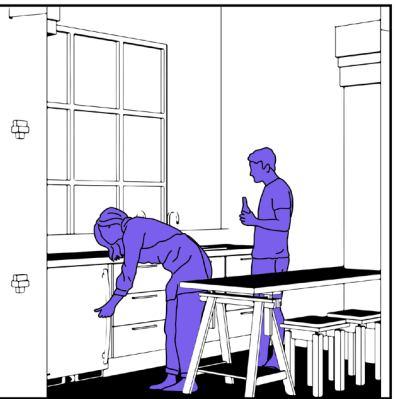
Following a relaxing shower, Declan decides to get a new haircut at the barbershop.



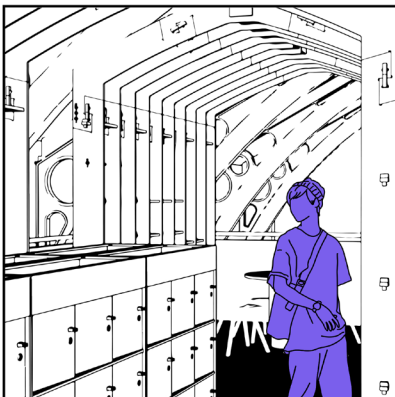
Declan has the opportunity to learn how to mend his own clothes and chooses a few new items of clothing.



Declan checks in to his new room.



Once settled in, Declan joins the other residents in the communal kitchen.



After his first week at Tenthalle, Declan is ready to collect his mail through the Proxy Address system.



Declan decides to use the computers available to look for job opportunities.



Declan uses the training he has been given to cook a fresh meal with the ingredients he selected himself.



After a month of living at Tenthalle, Declan has grown confident in his skills and has developed a support network he can rely on.

RESEARCH

AGE OF DEATH



DRUG MISUSE



HOMELESS WOMEN

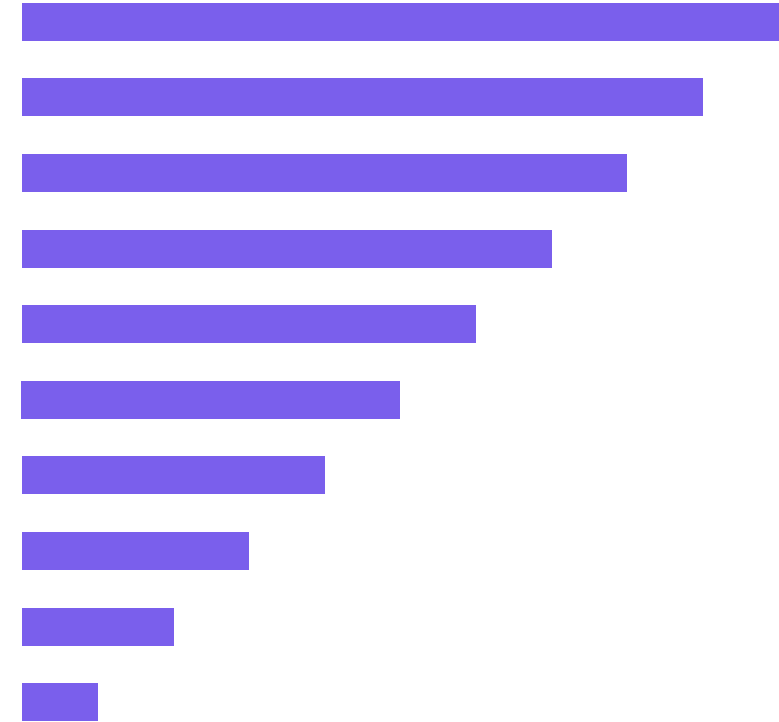


HOMELESS YOUTH | 16-24



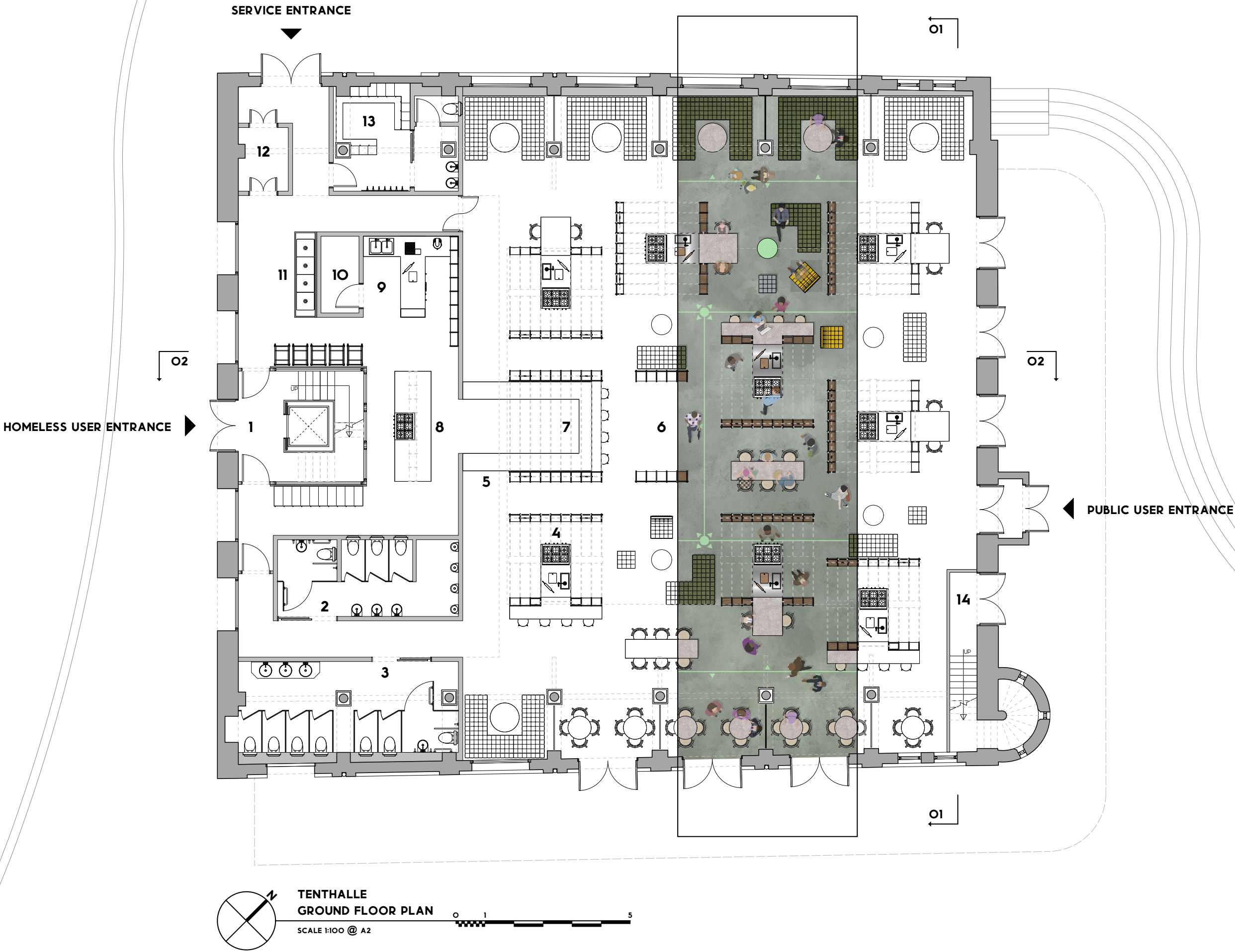
PRIORITIES

NEEDS



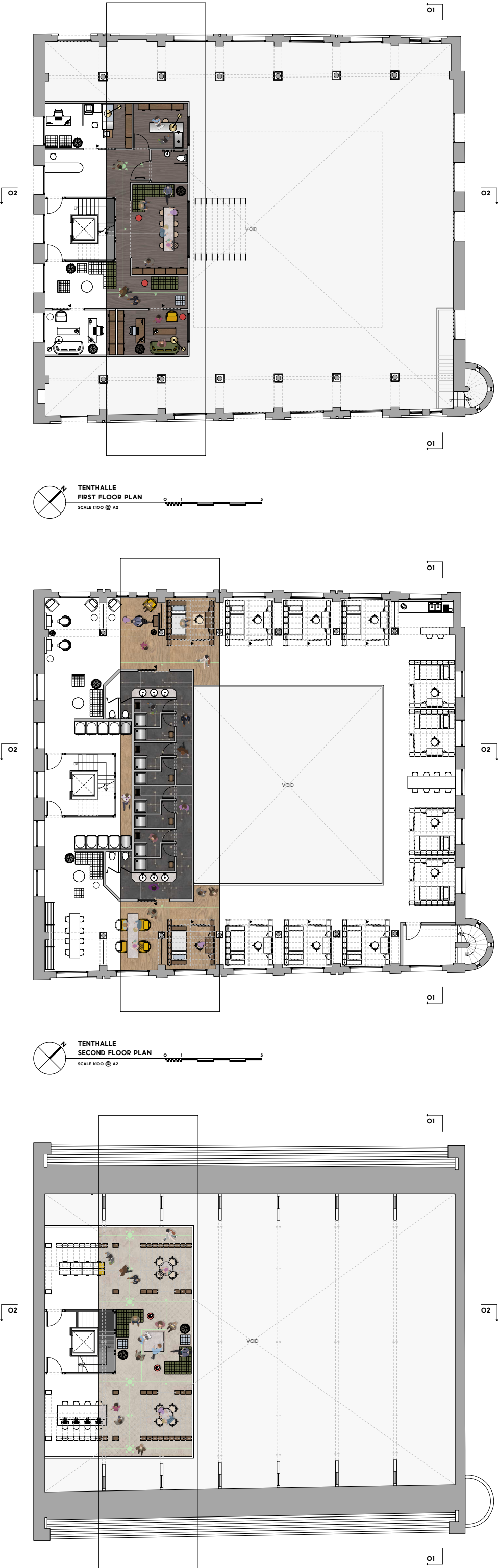
- FOOD
- ACCOMMODATION
- HYGIENE FACILITIES
- PHYSICAL AND MENTAL HEALTH CARE
- PRIVACY AND SAFETY
- WORK OPPORTUNITIES
- OPPORTUNITIES TO COMMUNICATE
- SUPPORT NETWORK
- EASE OF ACCESS TO SERVICES
- PET COMPANION ACCESS AND CARE

FLOOR PLANS



KEY

- | | |
|------------------|------------------------|
| 1 FIRE STAIR | 8 KITCHEN |
| 2 MEN BATHROOM | 9 FOOD PREP |
| 3 WOMEN BATHROOM | 10 FREEZER ROOM |
| 4 KITCHEN TENT | 11 POT WASH |
| 5 ORDER POINT | 12 REFUSE |
| 6 SUPERMARKET | 13 STAFF CHANGING ROOM |
| 7 BAR | 14 FIRE EXIT |

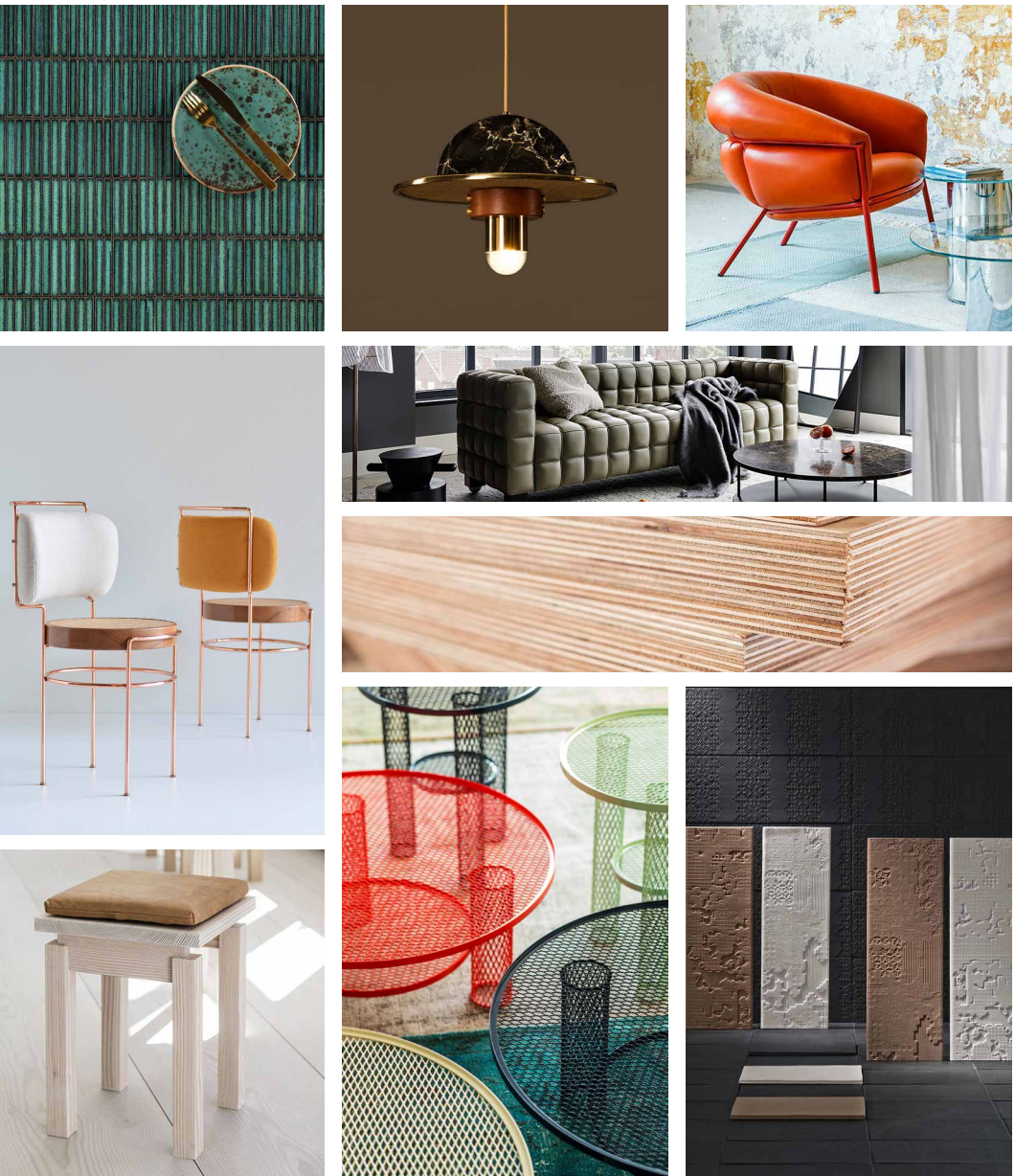


MATERIALS

SECURITY + LEGIBILITY

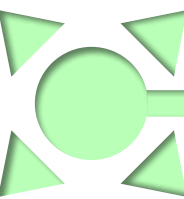
The furniture and fixtures have been selected to replicate the repetitive patterns identified in the host building. Furthermore, the inserted elements are distributed following the grid organization of the plan, while respecting the building’s symmetry. This gives the user the confidence to navigate the space and promotes a sense of security and enhances the legibility of the space.

Creating a rich atmosphere is achieved by introducing a level of intricacy through the use of warm and textured materials, this encourages the user to interact with their environment.



The design uses wayfinding graphics, using a simple and consistent design language to guide the user through the space.

MEND WORKSHOP



CROSSROADS

PATH

DESTINATION