

The Ledbury Tease

By CINDY ZURIAS



Rather than a seated meal

guests are guided through a sequence of sculptural environments that reveal the restaurant's food philosophy through architecture, materiality, and interaction.

This project *reimagines the fine dining* experience as an *immersive, walk-through* installation in the heart of Shoreditch

Colour palette & Materiality

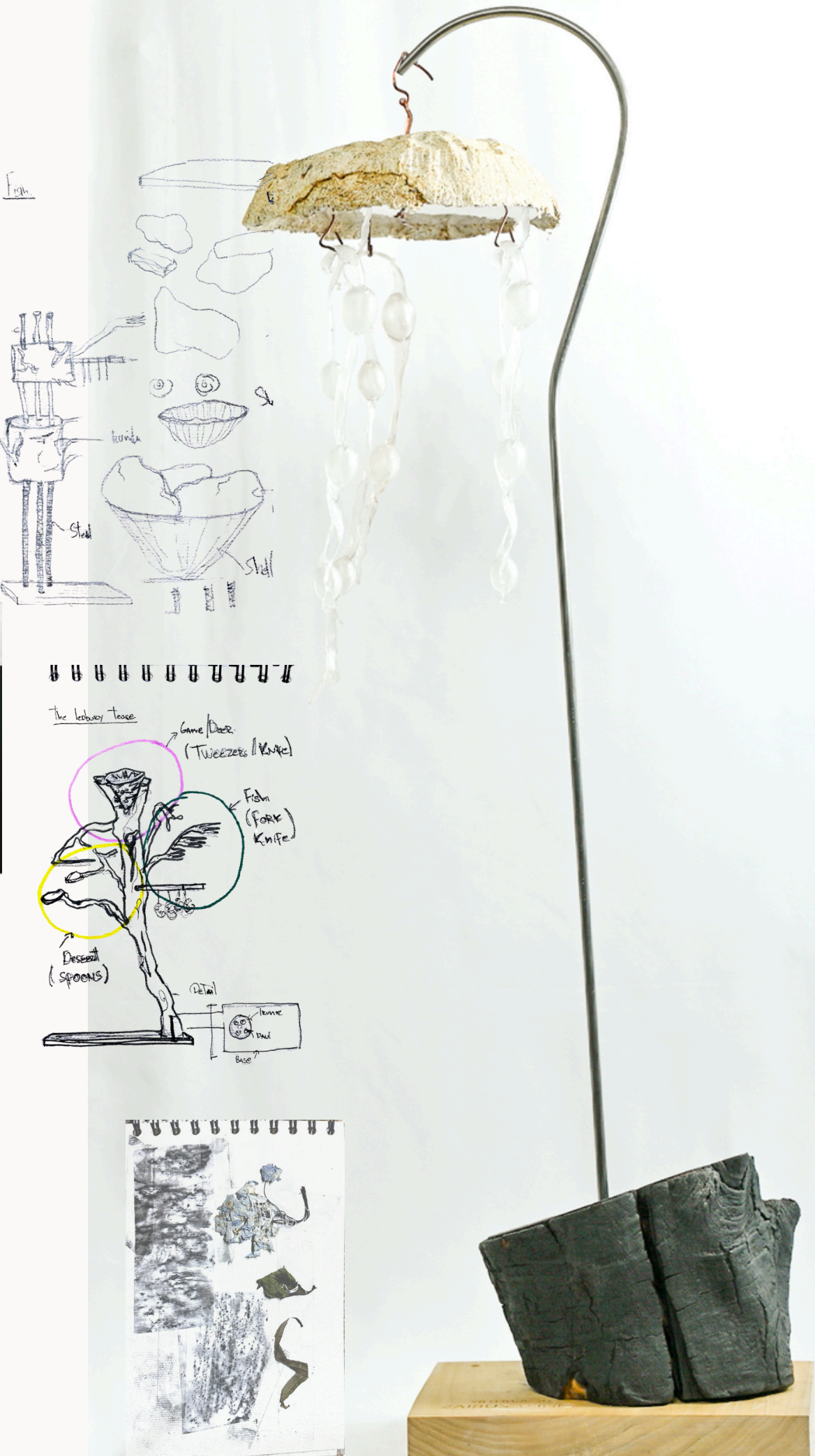
It was analyse and inspire by Rose Murray and her deeply connected interior design that she developed for the last renovation of Ledbury restaurant.

Craft and Make

1. Black slate
2. Black steel
3. Oak bark
4. Marble
5. Mycelium
6. Coffee wasted panels
7. Wood

Guide

Through bespoke service structures, *sensory architecture*, and material storytelling, the design delivers a *unique narrative-driven* tasting experience that *challenges the boundaries of food, art, and space*



Entrance

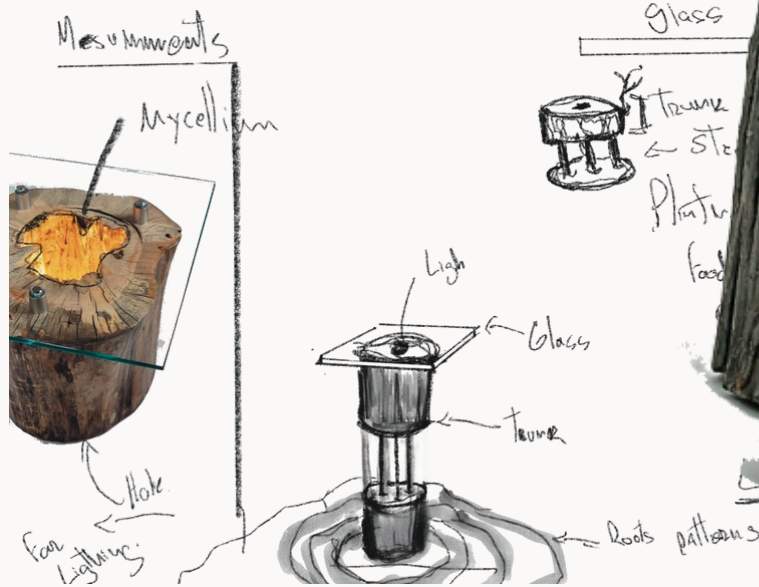
Starters

Mains

Desserts

Parlor

Exit



THE JOURNEY

Follow the Chasm

Kitchen Entrance: The experience begins in the heart of the kitchen, evoking the intimacy of a Michelin- starred chef's table.

Woodland Installation: Guests walk through an architectural landscape inspired by British forests, where *textures and forms* evoke a sense of *natural wonder*.

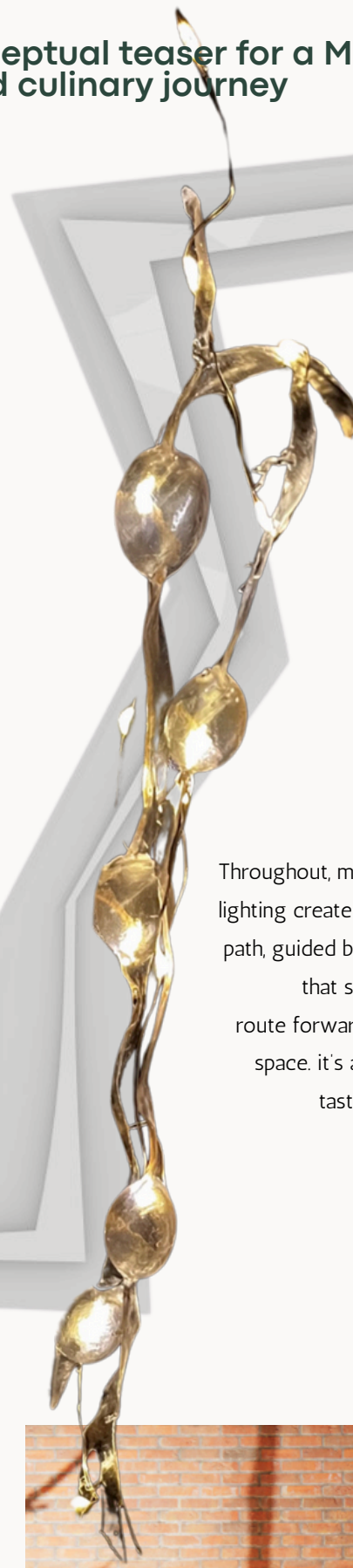
Starters Station: Suspended bites are served from *branch-like structures* using bespoke, sculptural cutlery, blurring the line between service and art.



Main Course Zone: *Charred wood trunks*, treated with traditional *Japanese techniques*, form the base. Plates are inspired by ingredients.

A CONCEPTUAL TASTING, TOLD THROUGH SPACE, TEXTURE, AND LIGHT - THAT CAPTURES THE QUIET POWER OF FINE DINING REIMAGINED.

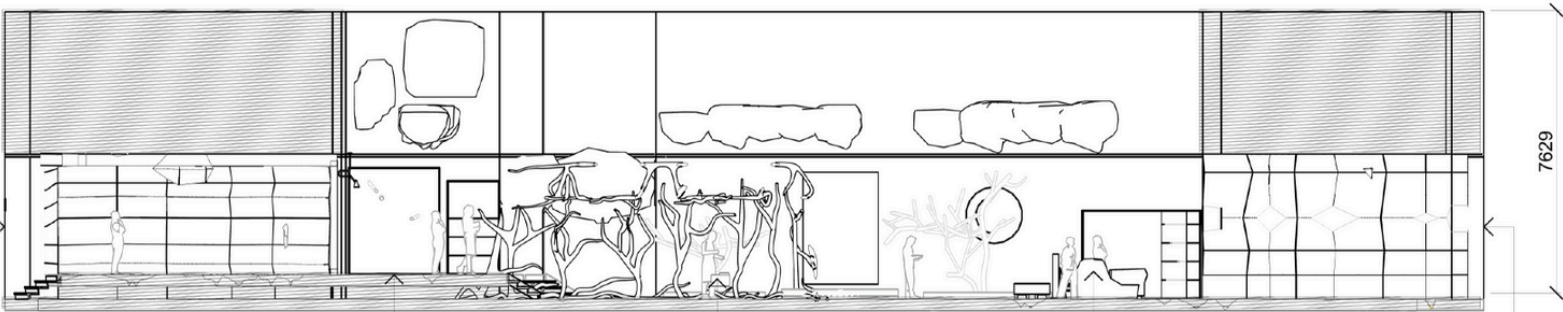
A conceptual teaser for a Michelin-starred culinary journey



Throughout, materials, textures, and lighting create a cohesive narrative path, guided by a sculptural chasm that suggests the route forward. This is not just a space. It's a story you walk, taste, and feel



By CINDY ZURIAS



ENTRANCE STARTERS CHEF'S TABLE PARLOR EXIT

Dessert Tree: Cacao-shaped chocolate bites are hidden within real cacao shells, plucked from a *tree-like installation* and enjoyed in a decompression parlor

