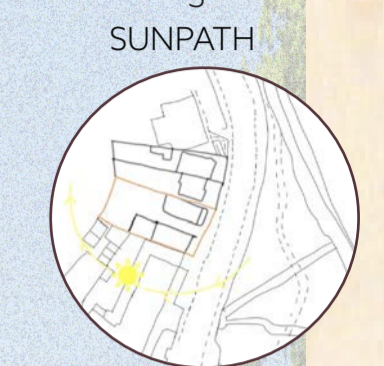
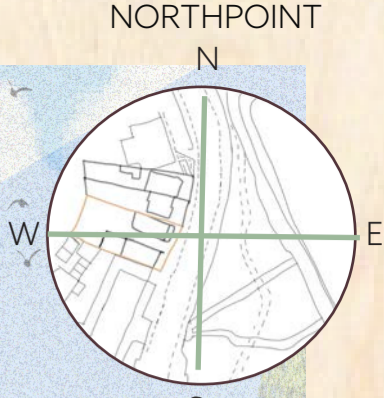


SECTION AA  
SCALE 1:100 @A3

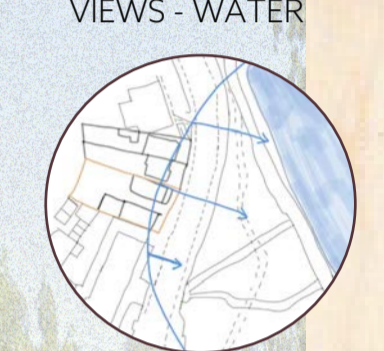
# TURF

INTERIOR EDUCATORS AWARDS  
KATE CARRINGTON-CURTIS

TURF occupies 287 Crabbrook road, Redbridge, located opposite Valentines park the project will not only promote a **sustainable lifestyle** but a **regenerative one** by encouraging biodiversity and water harvesting. It will be a vibrant user led interior using in-depth research on **environmental and social psychology**. Challenging **traditional government programs** to get people back in employment, creating a one stop hub for unemployed 16-24 year olds. By understanding **environmental influences on mood and behaviour** the scheme will be in **harmony with nature**. With workshops targeted at skills required to work in hospitality the young adults on the program will become confident to work in the Cafe downstairs for the duration of their stay. The **allotment** to the rear of the property is the key to the **success of this project**



This shows how the sun rises and sets which will impact how much light enters the building during the day.

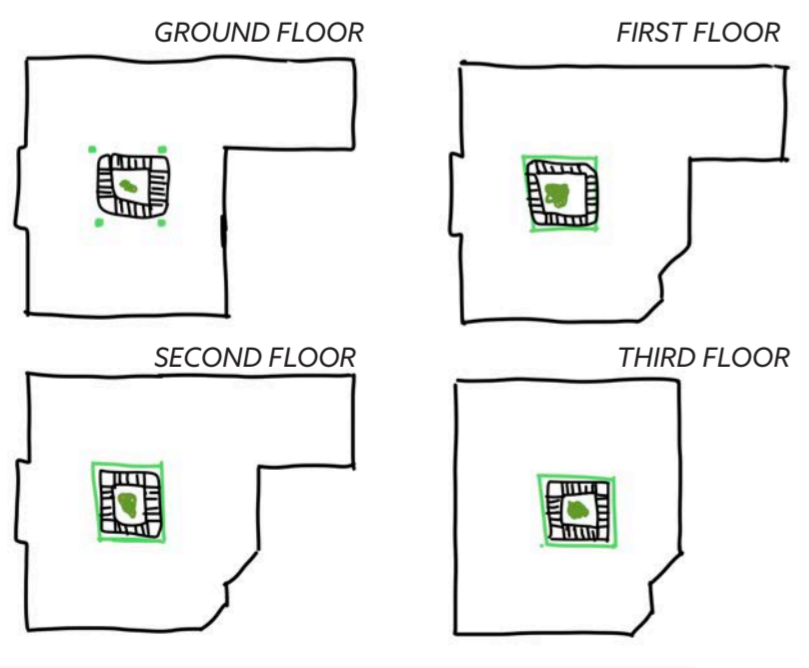


This drawing emphasises how close the site is to the boating lake. There are views of the lake to be seen from the interior and exterior.



This drawing emphasises how close the site is to Valentines Park. It has really lovely views, especially from first floor upwards.

## GREENING OF THE INTERIOR | NATURAL LIGHT | LIVING INTERIORS - STRATEGY



## SCHEDULE OF ACCOMMODATION CAREER | COMMUNITY | SUSTAINABLE LIFESTYLE | INDEPENDENCE

THIRD FLOOR  
SECOND FLOOR  
FIRST FLOOR  
GROUND FLOOR



**APARTMENTS**  
For young adults enrolled on the program

**APARTMENTS**  
For young adults enrolled on the program

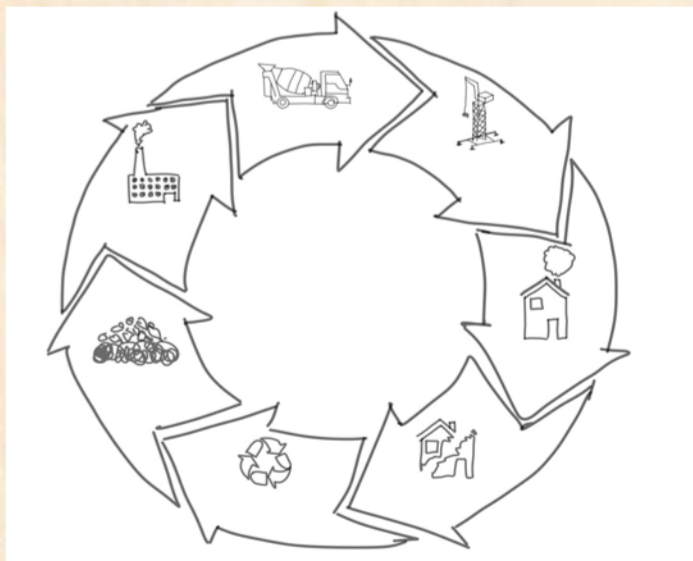
**WORKSHOPS**  
Cooking, Life coaching, CV writing, Computer Access

**CAFE | ALLOTMENT**  
Eat in, Take away, Access to all floors & Allotment

## SUSTAINABILITY STATEMENT

**STRATEGY**

- Scheme uses an existing building with an **adaptive reuse approach**
- **Utilisation of rainfall** - rainfall harvesting used to water allotment
- **Solar gain** - Inserting **central atrium** to allow more natural light into all levels
- **Biodiversity** - **regreening** by turning a carpark into a green space
- **Equal opportunities**
- **All materials and furniture specified in this scheme are sustainable**; Mycelium and Cork are even **biodegradable**. Turf encourages a **permaculture lifestyle** by implementing a **regenerative approach** and a **zero waste attitude**.
- The Cafe will compost food waste in the allotment to the rear and the soil produced will be used on **site to grow organic goods**.
- The scheme has incorporated all aspects of **biophilic design** with intent to **connect** it's inhabitants with **nature**, by making it's users **aware of their**

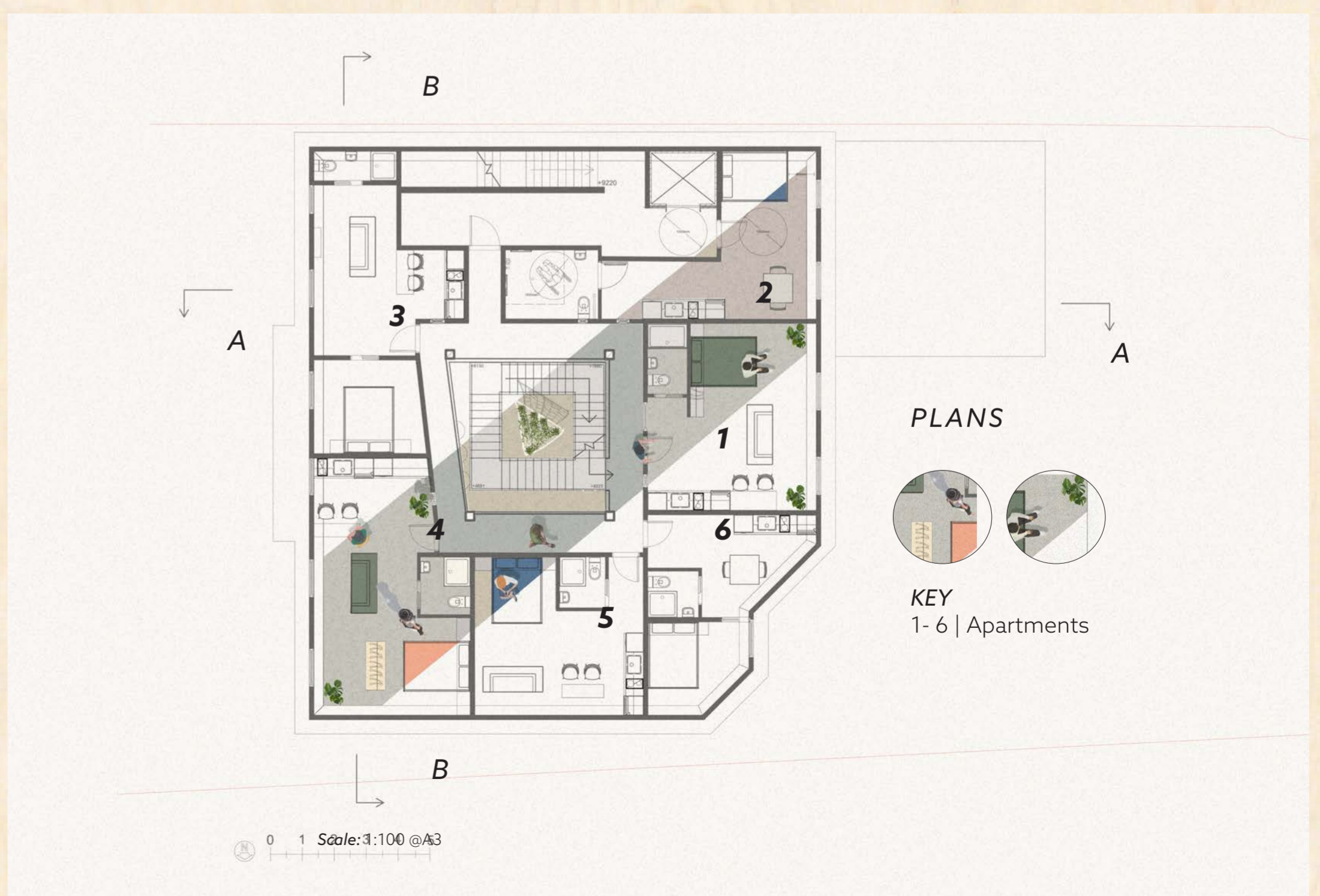
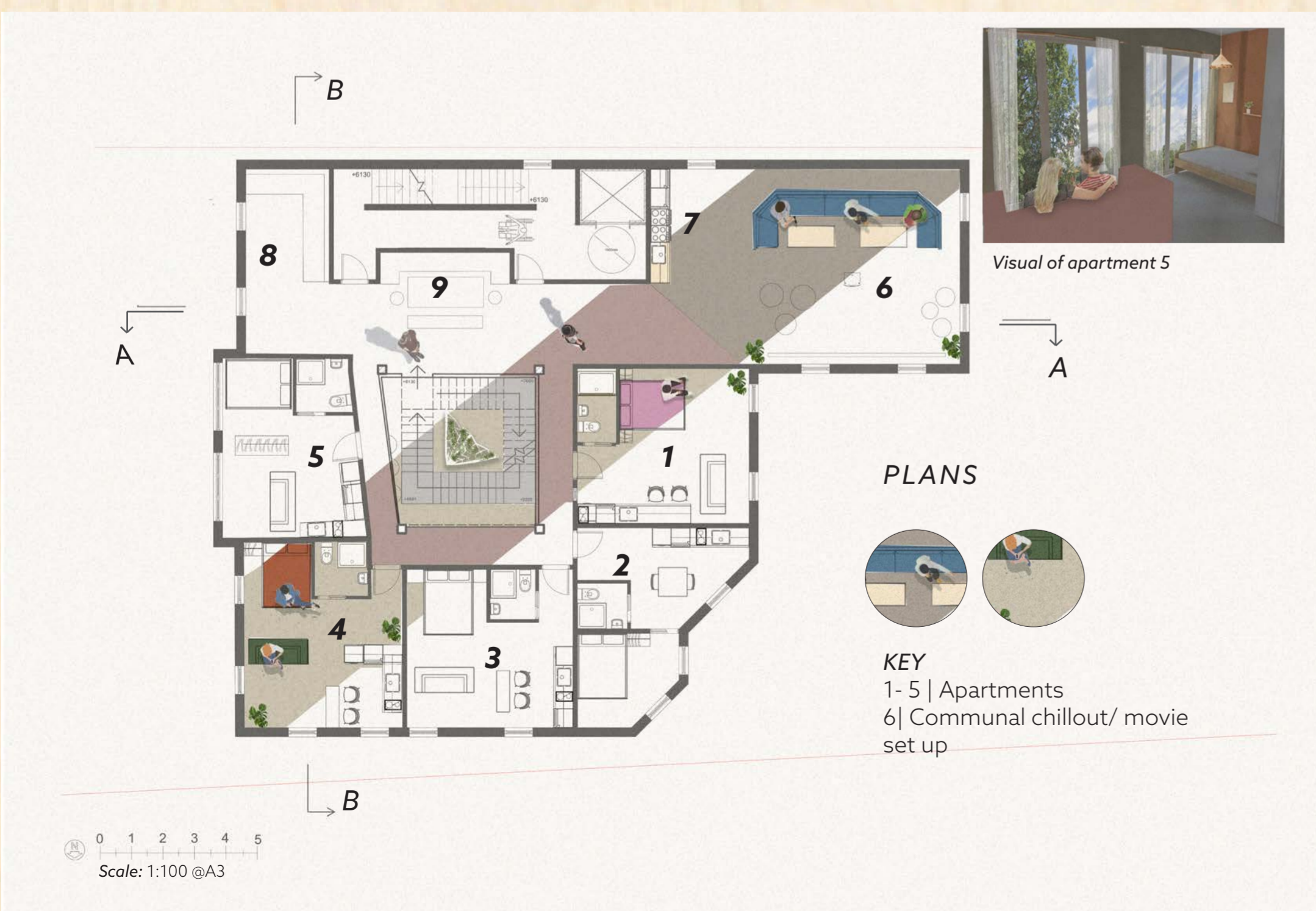
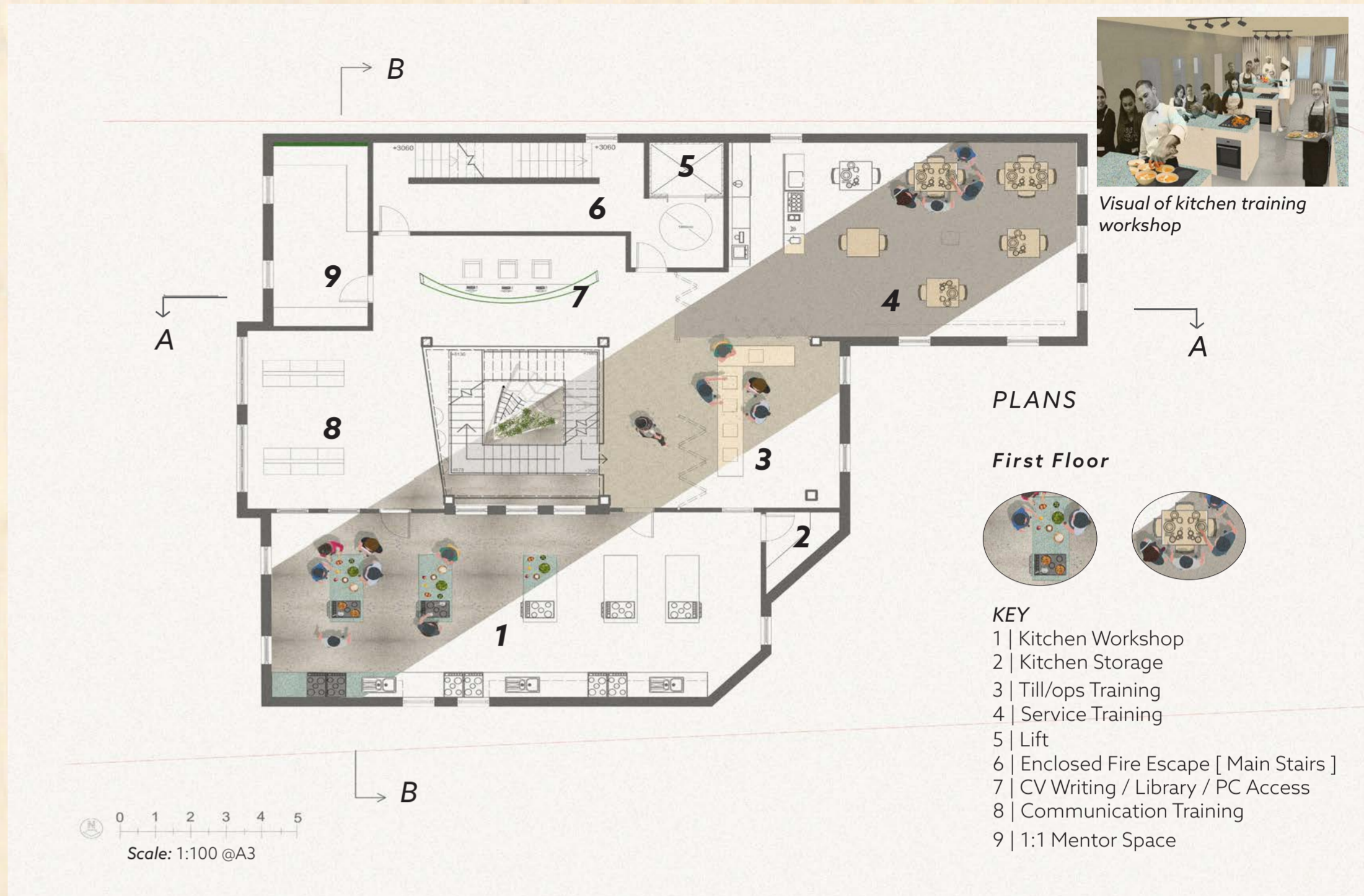


The images above show my inspiration. By inserting an atrium it will ensure the residential apartments on the second and third floor get enough **natural light from all aspects**. There will be a sculptural element that will hold plants and **create interesting shadows**. **Plants and living materials** such as Mycelium growth will be heavily used throughout the interior, allowing it's inhabitants to **learn and understand** how to **live and grow within the earths natural limits and encourage biodiversity**.

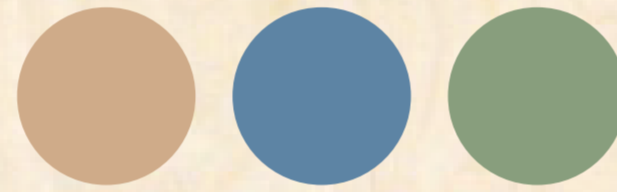
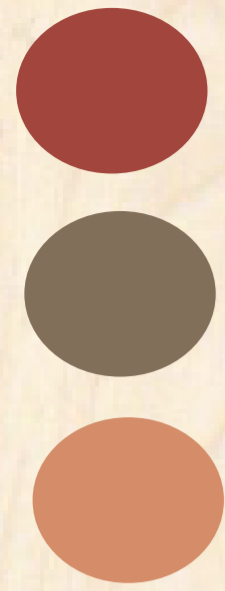
## WHAT IF AN INTERIOR ALLOWED PEOPLE TO LIVE IN HARMONY WITHIN THE EARTH'S NATURAL LIMITS? BASIC HUMAN AND PLANT NEEDS FOR SURVIVAL



PROJECT IN PLAN - ALL LEVELS

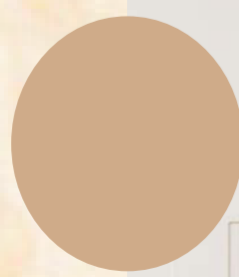
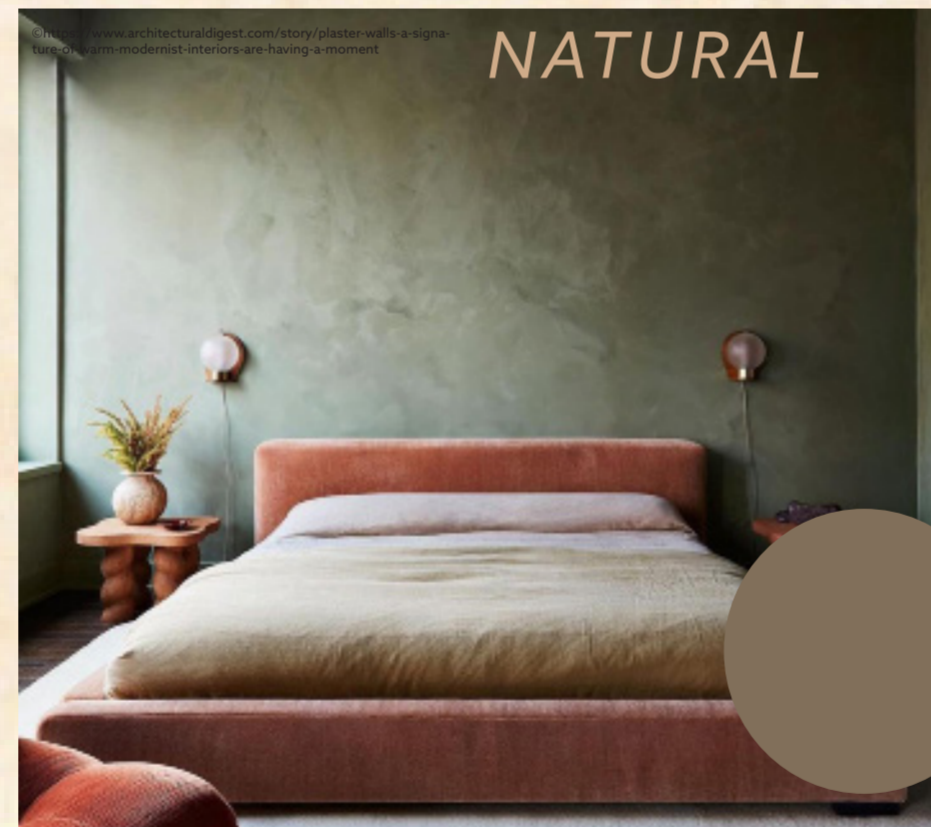
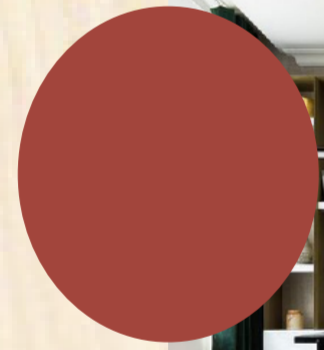


# MASTER MOODBOARD - NATURAL RESOURCES



## COLOUR RATIONALLE

The colour scheme for TURF consists of earthy tones inspired by the *horizon layers of soil*. In line with *WGSN colour forecasting trends 2023*. This palette will echo a *relaxed* atmosphere that's intimately *connected to nature*. The colour selection matches the brands sustainable ethos and logo. A pale green and blue have been introduced to brighten up this natural hues. Balanced with warm and cool tones, the palette has been chosen with longevity in mind.



## MATERIAL STATEMENT

### DECORATIVE APPROACH

The intent of the project is to bring *nature closer to people*, meeting the needs of everyday life, both functionally and aesthetically. The interior design and materiality embraces Nature's radical character, to establish a *more honest relationship with the surrounding environment*.

This is embedded in the selection of materials used within the scheme. Ensuring the *lowest environmental impact possible*.

TURF promotes a *sustainable lifestyle* and *zero waste* approach, the materiality and furniture throughout the scheme reflect the brands core values. A lot of the furniture has been selected with a *cradle to grave* approach, with many pieces being *biodegradable* so when it is no longer required it can be composted providing the soil with rich nutrients instead of going to landfill.

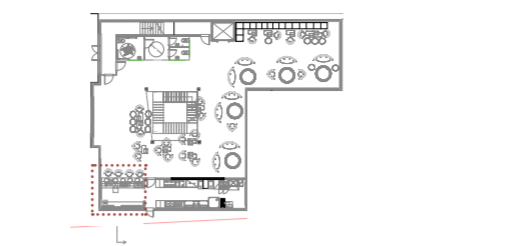
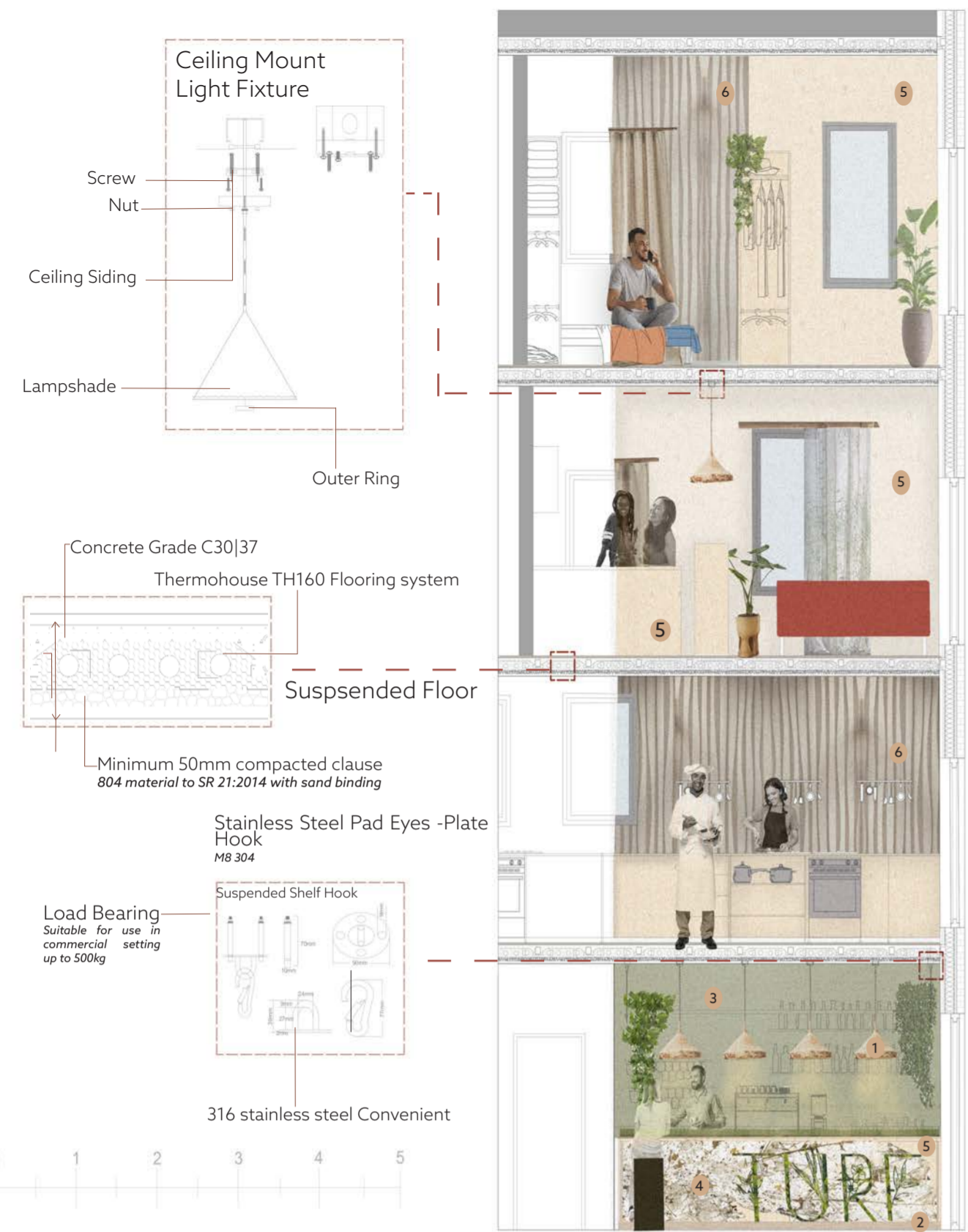
Where possible materials have been *sourced locally* and from *certified sustainable suppliers*. The interior celebrates the *uniqueness* of using *organic honest materials* - with this in mind joinery details such as screws and bolts will remain *uncovered* for it's users to appreciate. Bespoke elements have been *designed to be dismantled*, ensuring ease of replacing elements as they are made of *easy to hand materials* and widely recyclable.

Finishes such as Clayworks Clay plasters have not only been selected for aesthetic purposes but also for their *material properties*; they regulate relative humidity, allow buildings to *breathe, and absorb toxins, odours and acoustics*. They can also *passively regulate temperature* which is imperative when working with existing buildings and increasing energy efficiency. They are *recyclable, compostable, re-useable, and contain no toxic ingredients or VOCs*.

By selecting materials that have specific properties to benefit wellbeing, the interior spaces will allow it's inhabitants to feel more *connected to nature and their surroundings*.

### Key Materials

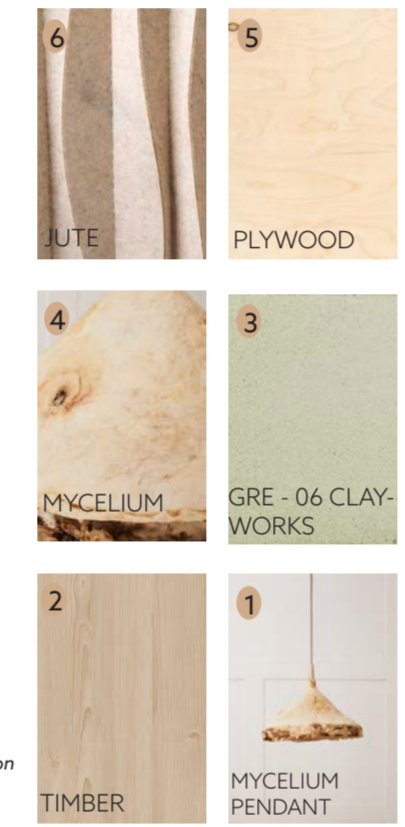
Plywood, Mycelium, Cork, Timber, Jute



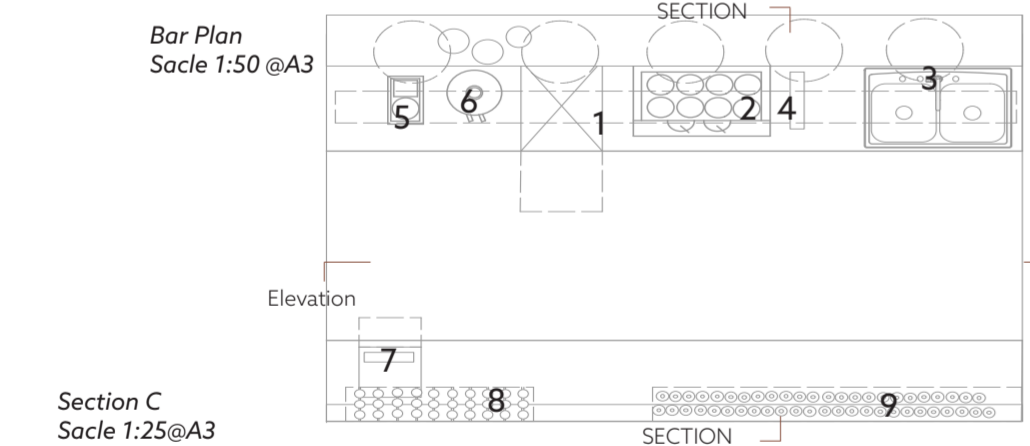
**SECTION - SUSTAINABLE MATERIAL CHOICES**

*Cut Through*

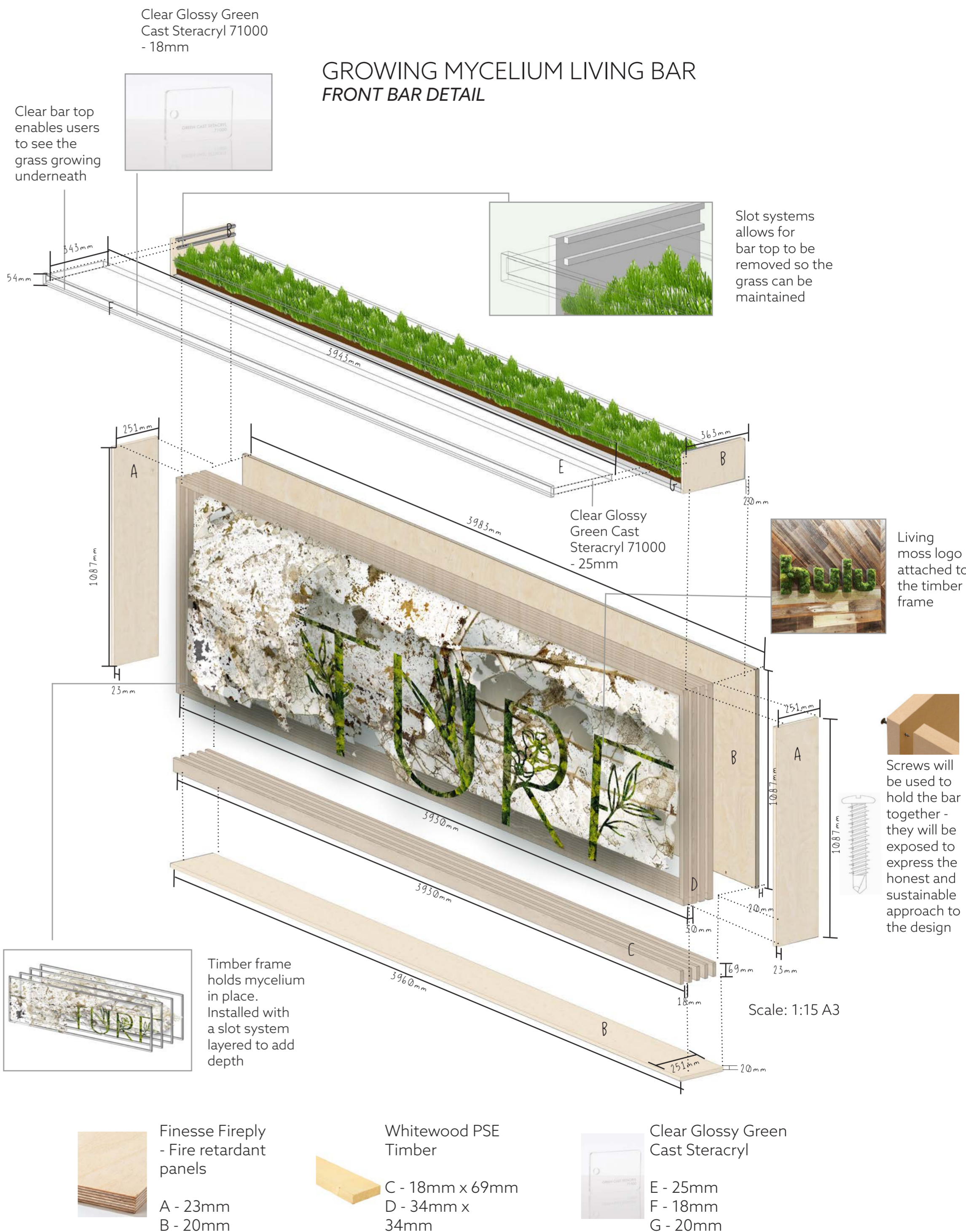
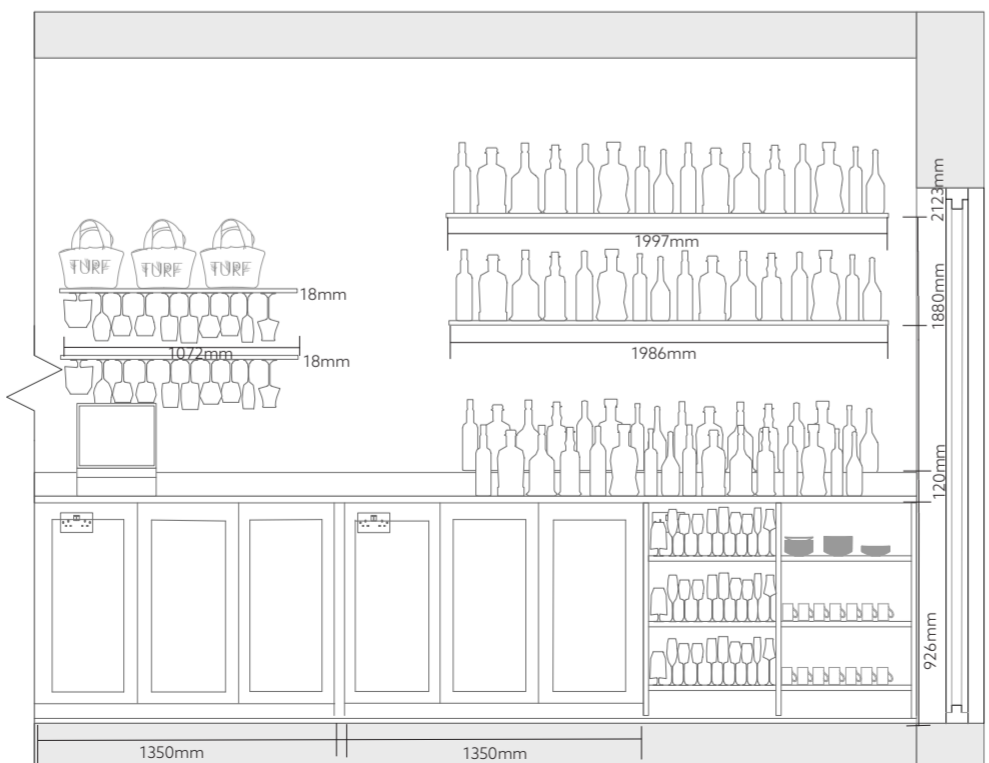
This technical section cuts through all levels of the building, including the **bar**, **kitchen workshop** space and **apartments**. Focussing on the **materiality, fixtures and fittings**.

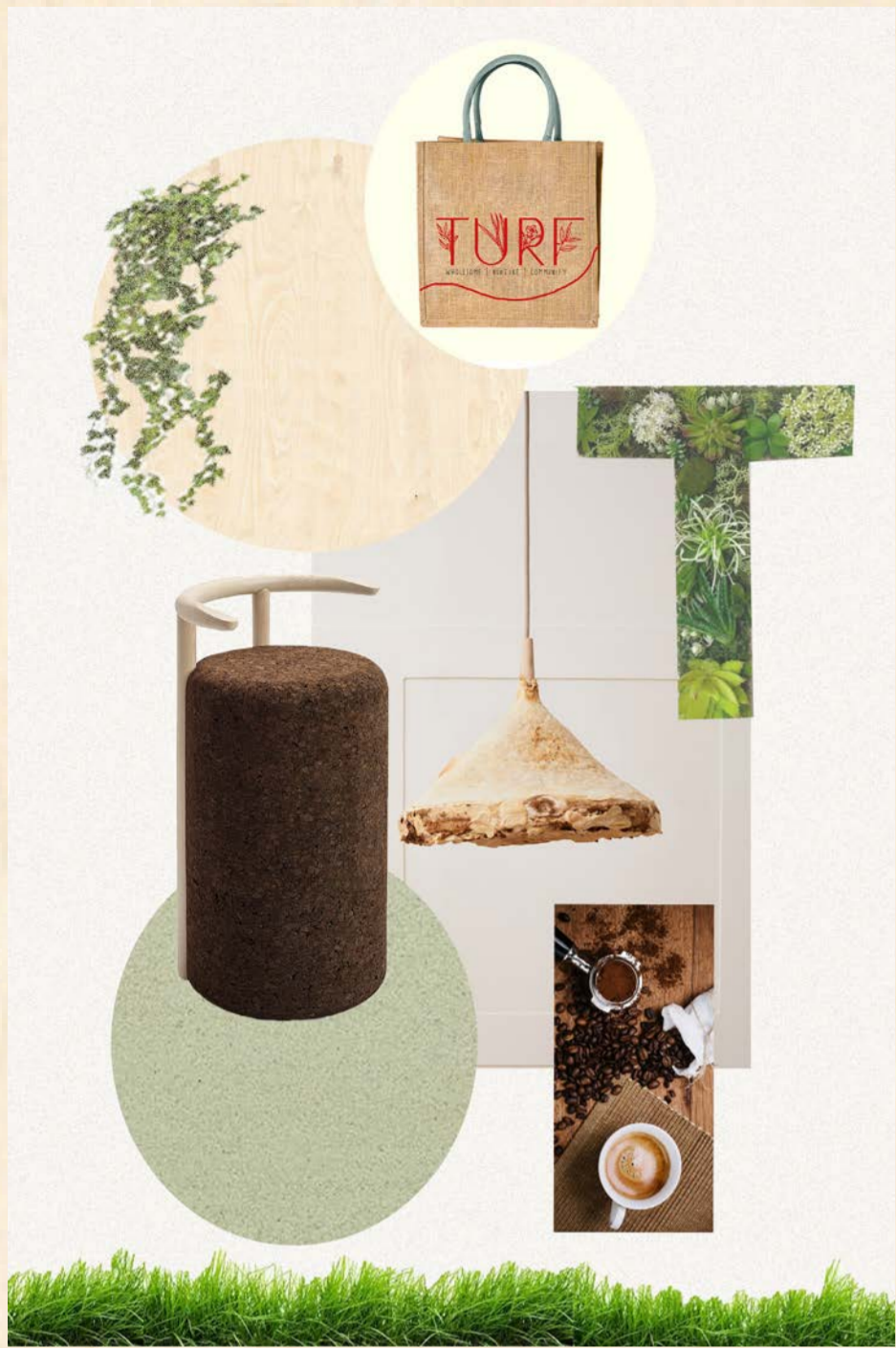


**GREENERY OF BESPOKE BAR IN SECTION, ELEVATION & PLAN**



- KEY**
- 1 | Bin
  - 2 | Coffee Machine
  - 3 | Sink
  - 4 | Coffee Ground Collector [composting]
  - 5 | Coffee Bean Holder
  - 6 | Coffee Grinder
  - 7 | Till
  - 8 | Bottle Shelving
  - 9 | Glass Shelving & Merchandise



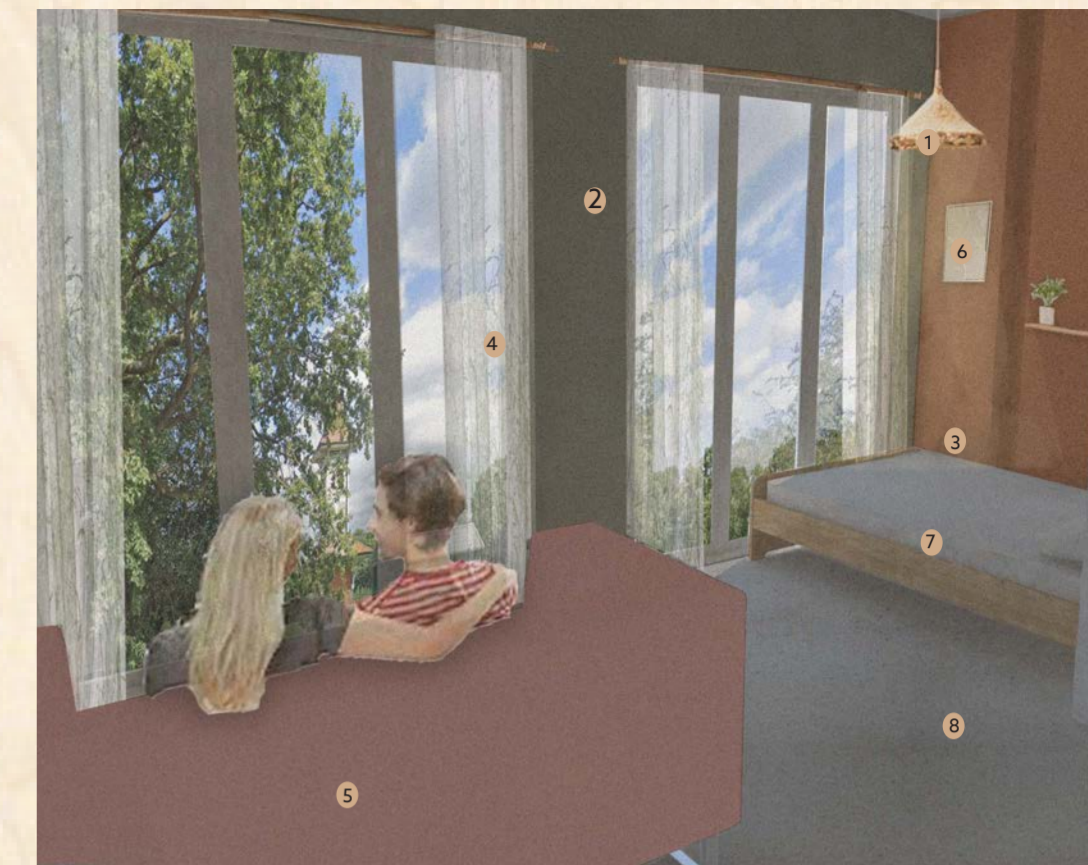


**CAFE**

*For residents enrolled on the program*

Interior: a comfortable space that frames the views over Valentines park, with warm tones this is the perfect space to kick back and relax after a day of training. The cafe boasts living greenery and a bar made of mycelium, to the rear diners can watch as the food on their plate is planted and nourished to produce organic goods for the cafe.

1. Large Mycelium Light Pendant | Sebastian Cox
2. Gre-07 Textured Render | Clayworks
3. Ter-02 Textured Render | Clayworks
4. Piece of Lawn Curtain | JAB Anstoetz Group
5. Omega High Stool | Toni Grilo | Blackcork
6. CR Bench | Grown Bio
7. Cut Side Table | Blackcork
8. Stone Mycelium Floor Tiles | Mogu

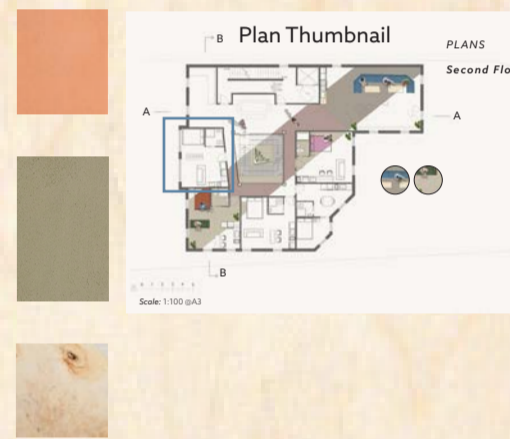


**APARTMENT**

*For residents enrolled on the program*

Interior: a comfortable space that frames the views over Valentines park, with warm tones this is the perfect space to kick back and relax after a day of training.

1. Large Mycelium Light Pendant | Sebastian Cox
2. Oli-02 Textured Render | Clayworks
3. Ter-02 Textured Render | Clayworks
5. HB01 - Two Seater | Malted Pink Linen | habbio.
6. Abstract Art Plaster art 3D | Etsy
7. Bespoke Bed | Local Carpenter
8. Stone Mycelium Floor Tiles | Mogu



**KITCHEN WORKSHOPS**

*For residents enrolled on the program and the wider community that book onto the courses that are run once a week.*

Interior: a practical space where materials have been selected for their durability. A calming palette for a space that can become busy when in use. The muted colours ensures that the users can focus on the food without any distractions

1. Large Mycelium Light Pendant | Sebastian Cox
2. Gre-07 Textured Render | Clayworks
3. Ter-02 Textured Render | Clayworks
4. Piece of Lawn Curtain | JAB Anstoetz Group
5. Omega High Stool | Toni Grilo | Blackcork
6. CR Bench | Grown Bio
7. Cut Side Table | Blackcork
8. Stone Mycelium Floor Tiles | Mogu



**VISUAL OF EXTERIOR ALLOTMENT**