

# EDUCATE. EAT. MAKE.

# PLISK.

Cornish for Shell.



## THE ISSUES

Old Man via unsplash photography



“We import 90% of the fish that we eat here in the UK and export 90% of the fish we catch”

T. Kazakevičius photography



“Every year the global fisheries industry generates more than 20 million tonnes of by-products, most of which are squandered”

T. Wood photography



Newlyn ranks 20% most deprived for employment, income, skills and education.

## WHAT IF A FISHING COULD BE BOTH CIRCULAR AND SUSTAINABLE?

### THE BRIEF

#### WHAT WILL I DO?

*“More than half of what gets caught in Cornwall isn't actually fish at all but crustaceans and shellfish”*

I will create a centre that tackles the issue of wasted shellfish by-products caused by the fishing industry through the creation of a micro industry which will turn shellfish waste into plastics and other experimental materials providing Newlyn with new jobs.

The centre will encourage tourists via a unique dining experience to embrace local food production to help stimulate a “sustainable gastronomy and encourage the retention of a local food identity”

#### WHY WILL I DO IT?

I feel that promotion and engagement with the lesser eaten species like shellfish in an engaging environment can help promote more sustainable ways of enjoying seafood and show case circular economy in action. It will be a chance to eat, educate and make.

\*Plisk branding created by author for the project\*



\*Plisk branding created by author for the project\*



#### WHAT'S IN A NAME?

Branding

The last native speaker of the Cornish language was Dolly Pentreath a fish wife who lived in Mousehole (Newlyn's neighbouring harbour) It seemed fitting a name my proposal in Cornish therefore it will be named “Plisk” which is Cornish for Shell.

# EDUCATE. EAT. MAKE.

## CONCEPT

Anatomy theatre



collection.sciencemuseum.org.uk

## CONCEPT

What if food production was performance?



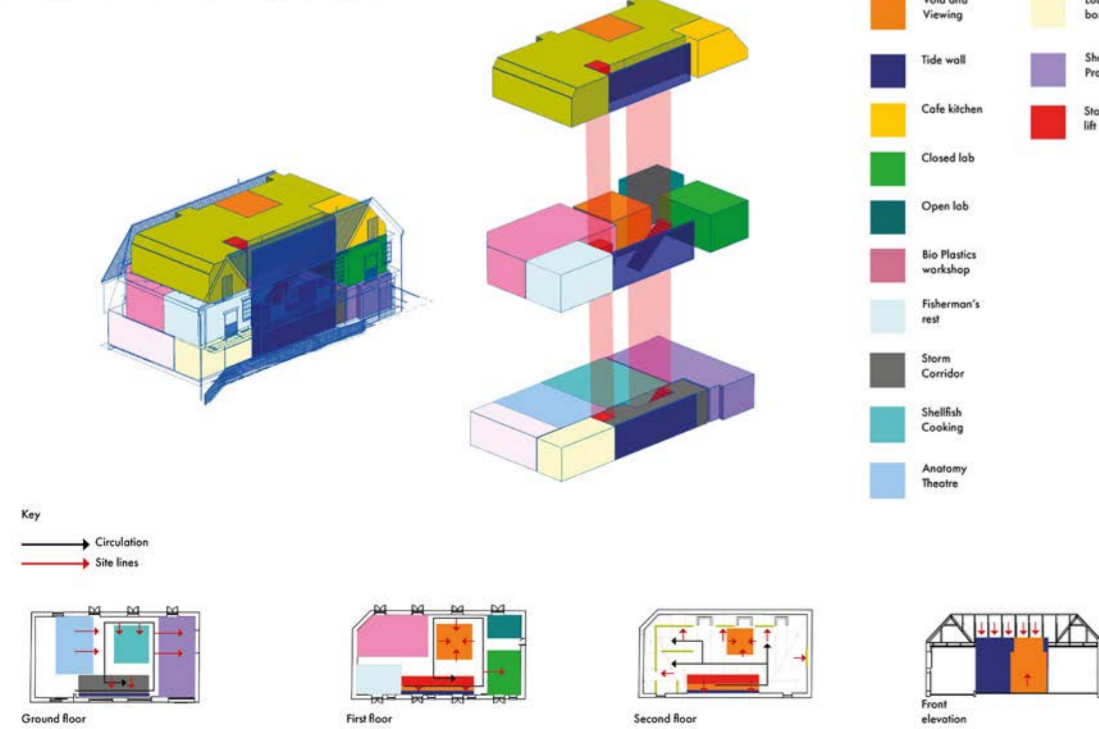
Merch Husey photography

"An anatomical theatre was a specialised building or room, resembling a theatre, used in teaching anatomy at early modern universities. Anatomical theatres were typically constructed with a tiered structure surrounding a central table, enabling a much higher number of viewers to observe the dissection of cadavers from fairly close range than would have been possible in a non-specialized setting".

Anatomy as entertainment. The power of performance used to educate and encourage engagement with the lesser eaten species. To appreciate what we have here in our own seas, to enjoy in a sustainable way.

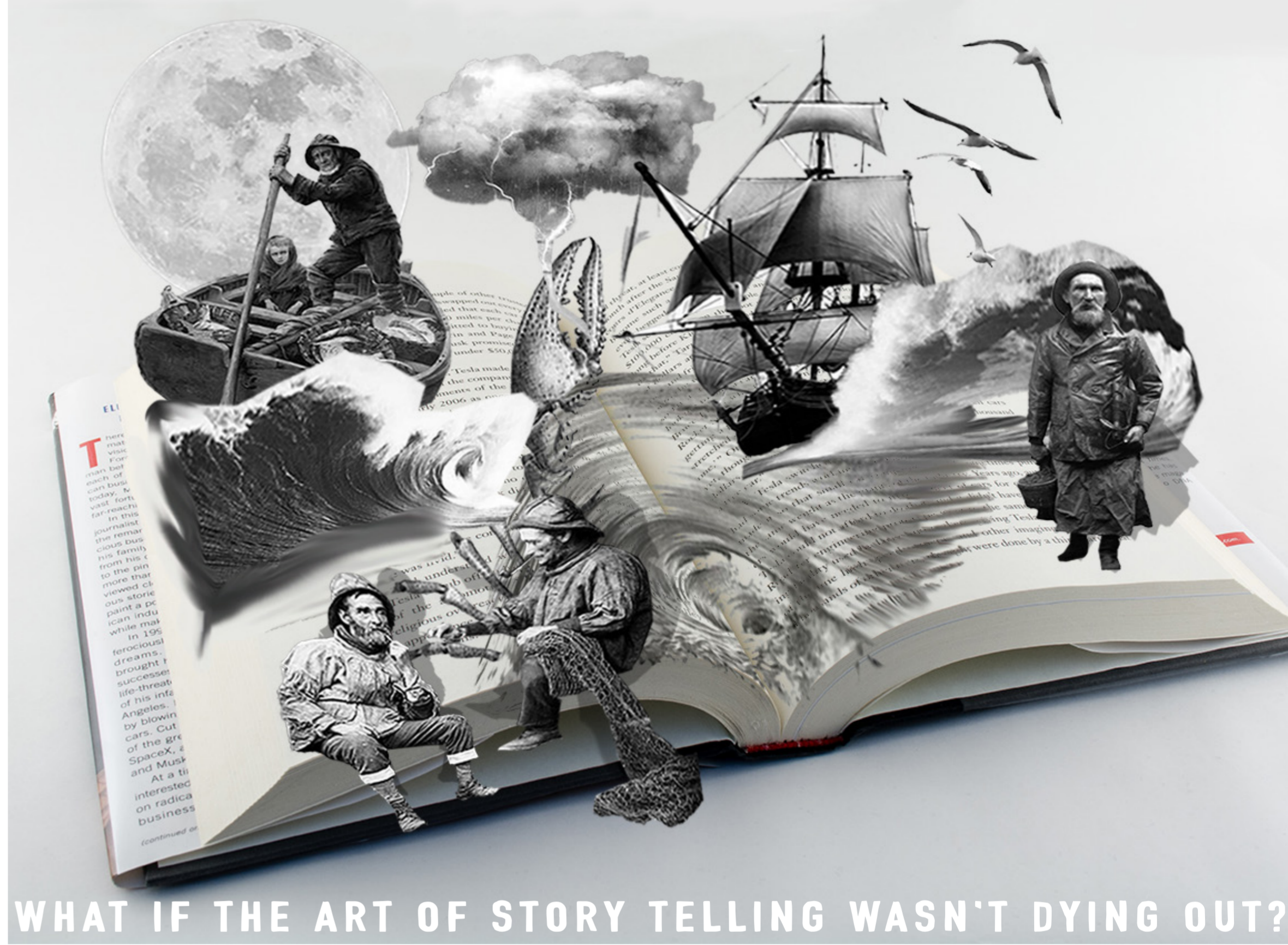
### SCHEDULE OF ACCOMMODATION

Zoning and site line strategic diagram



## CONCEPT STRATEGY

- The story of the anatomy and cooking
- The story of the catch and the process
- The story of the product
- The story of the fishermen
- The story of hands on making and collaboration
- The story of the tide
- The story of the sea/ anatomy theatre
- The story of the sea
- The story of the waste and bio plastic creation



### THE START

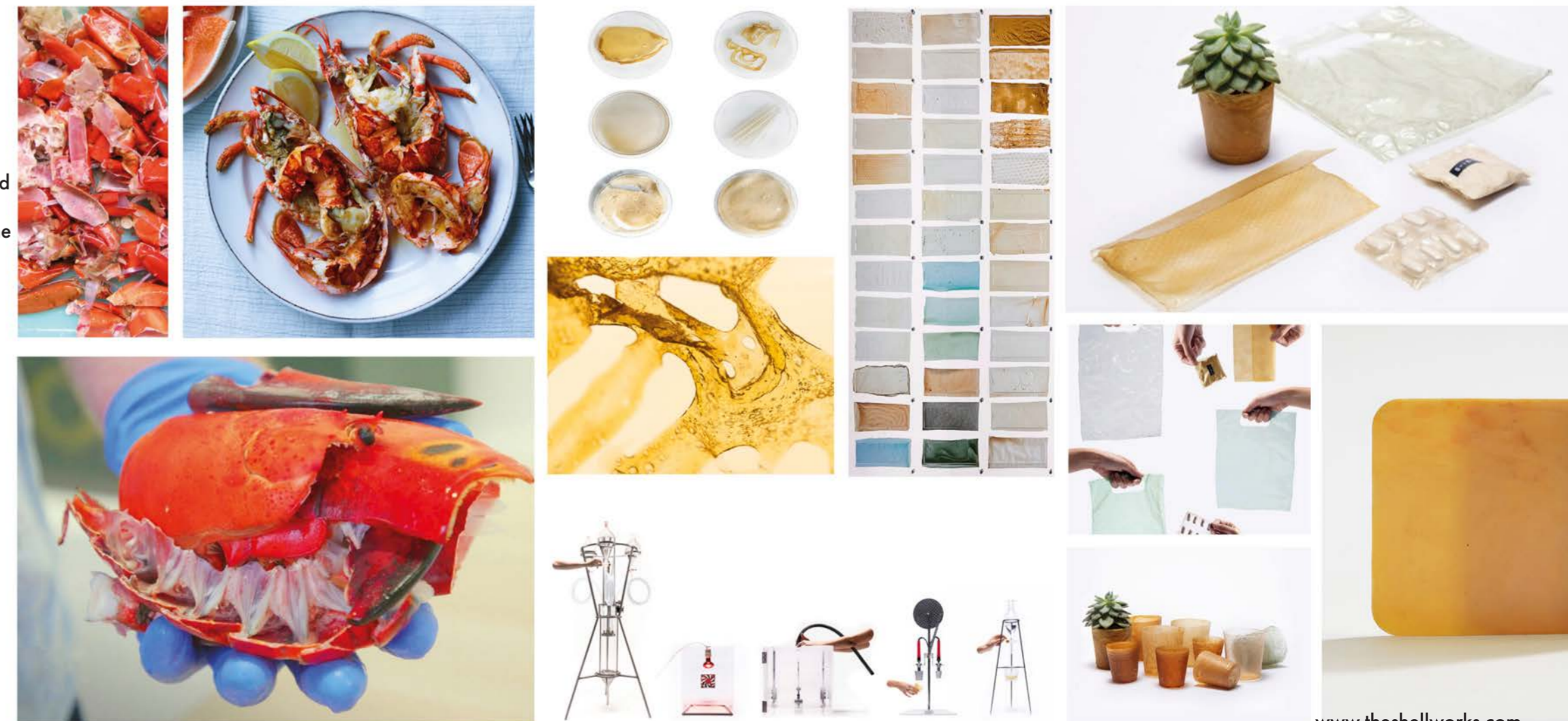
Shellfish are caught, consumed and enjoyed. Ordinarily the shells are wasted.

### THE PROCESS

Shells are melted down into chitosan powder, mixed with vinegar and vacuum moulded into sheets.

### PRODUCT POTENTIAL

The end product is a 100% biodegradable and recyclable and can be used for endless packaging options.



# EDUCATE. EAT. MAKE.

## THE SITE

23-31  
The Coombe,  
Newlyn

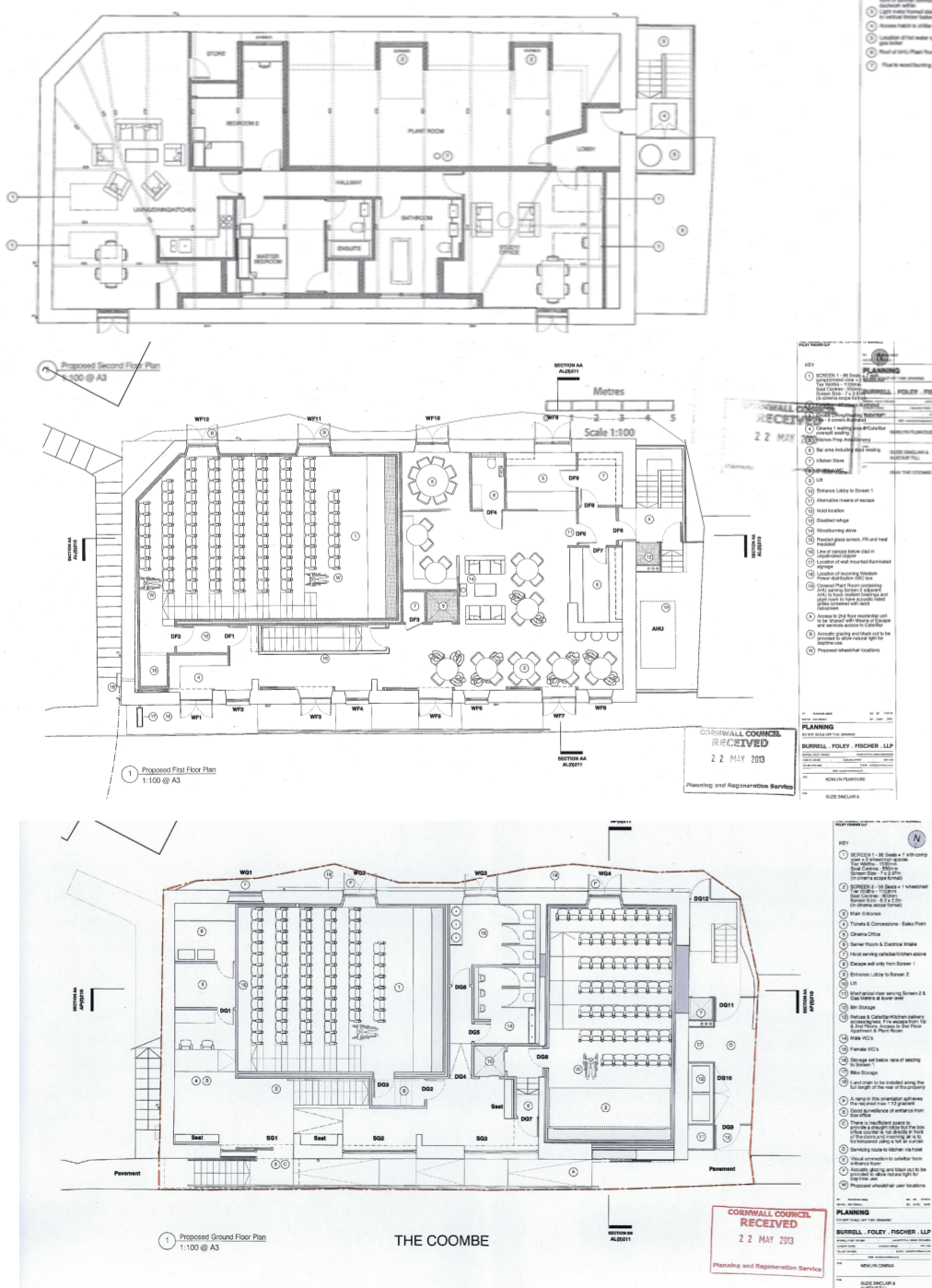


The building has no national or local heritage status which allows for optimum flexibility when proposing alterations. Comprising of 3 floors (ground floor 255.62 sq m, first floor 241.30 sq m and second floor 239.87 sq m) totalling in 736.79 sq m. The site was converted from a fish store into a film house in 2016.

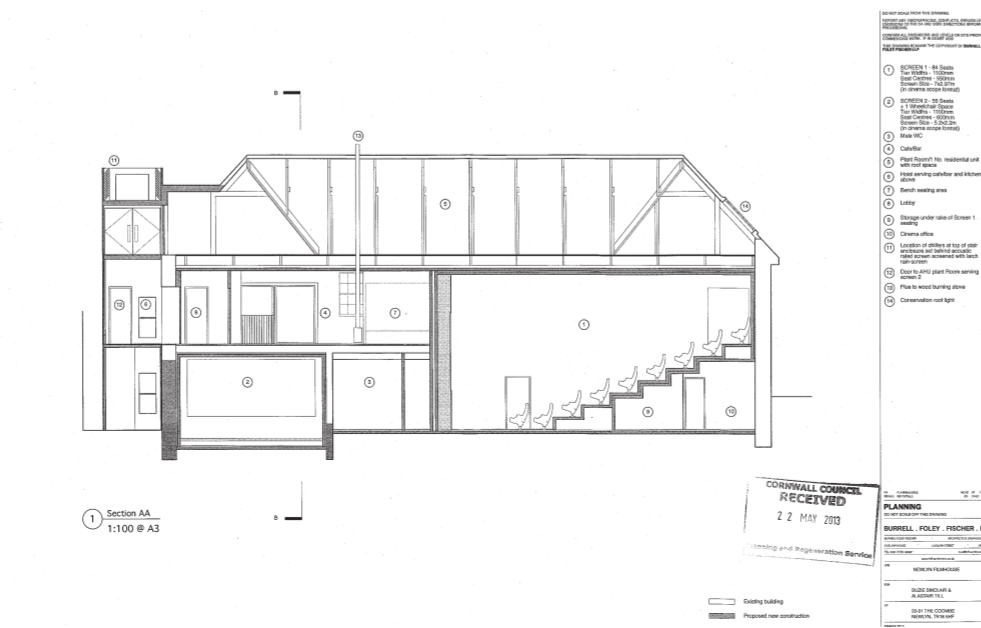
I felt it was essential for the site of my proposal to be near the harbour and have a link with Newlyn fishing heritage for my design to succeed.

(23-31 The Coombe) is perfect because it is positioned 240 metres from the harbour

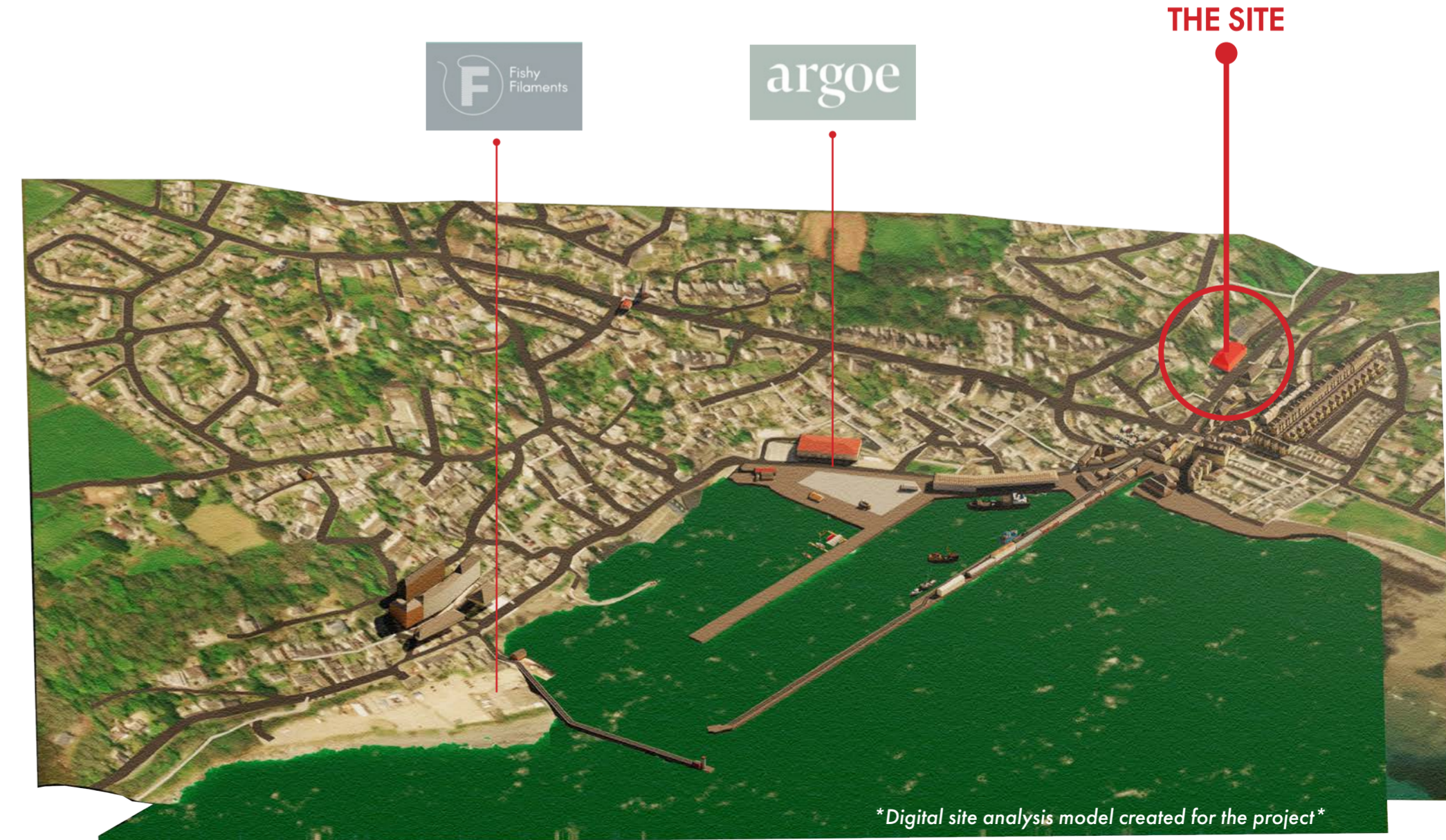
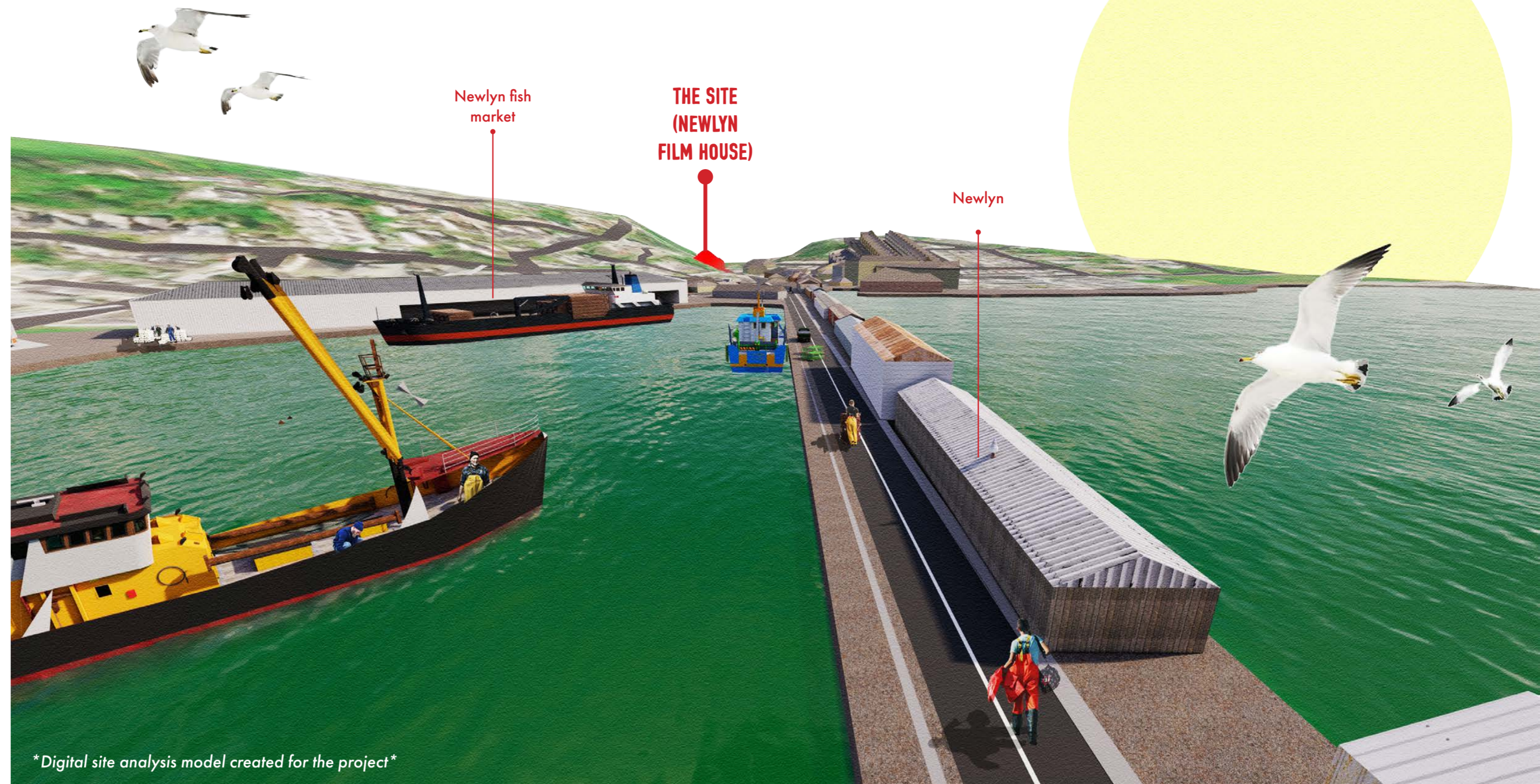
## ORIGINAL PLANS



Consideration has been applied to any businesses with similar ideologies operating in the area. "Fishy filaments" operates 896.07 metres away from the site and provides "a win-win solution to fishing communities by taking end of life fishing gear and transforming it into commercially viable products" like 3D printing cartridges (Fishy Filaments, 2021). Situated 429.81 metres from the site is "Argoe" restaurant. The restaurant encourages consuming "the lesser eaten species offering unused, unknown and underrated cuts" (Instagram, 2021). This cements that Newlyn is the right location for my proposal.



\*Digital site analysis model created for the project\*



\*Digital site analysis model created for the project\*

# EDUCATE. EAT. MAKE.

## THE DESIGN

Front elevation



## INSIDE THE STORM CORRIDOR

### Tide wall and film screen

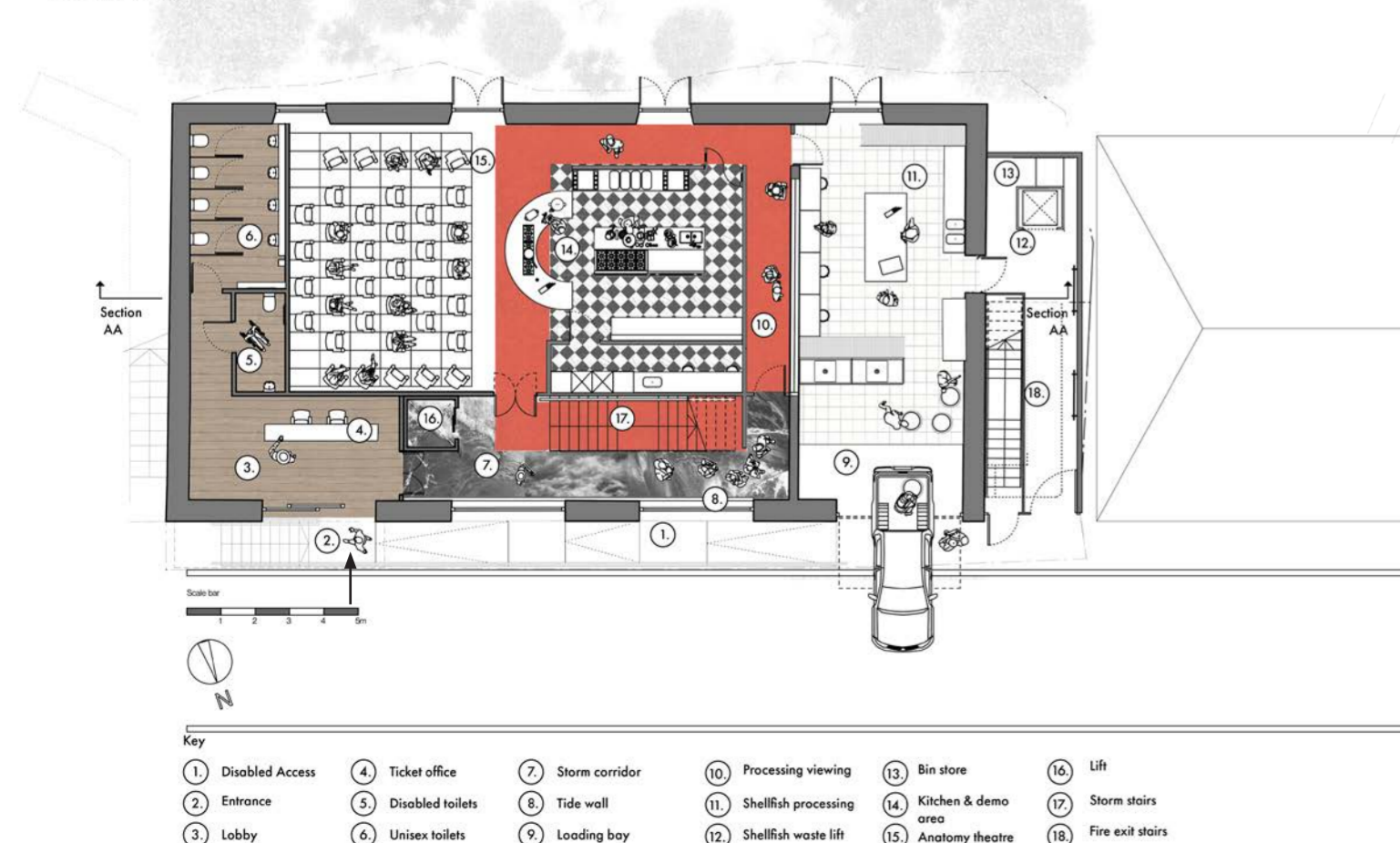
1. There is a tidal screen wall that transcends all 3 floors of the building and is visible from the street that is timed and set to the tide at Newlyn harbour. As the tide comes in the screen will fill up and as the tide goes out the beach on the screen will become more apparent.

2. Inside the storm corridor- as visitors make their way to the processing pass from the ticket and lobby area and then onto the anatomy theatre they will pass through the storm corridor which will have a LED screen on the floor, ceiling and wall and will play load crashing black and white waves, it will feel as if you are under water about to be caught.

3. Once visitors have enjoyed their time in the anatomy theatre they will ascend the storm stairs to all levels, from here the tidal wall and storm corridor will be visible via a void as you travel up the stairs there will be another screen which houses the other side of the stairs which will be playing silent black and white films depicting life at sea and fishing.

### FLOOR PLAN

Ground floor



### FLOOR PLAN

First floor



## AXONOMETRIC

### ROOF STRUCTURE

1. Dormer windows
2. Original wooden trusses and beams

### SECOND FLOOR

3. Cafe and product display
4. Product display and custom seating made from discarded plastic fishing boxes

### FIRST FLOOR

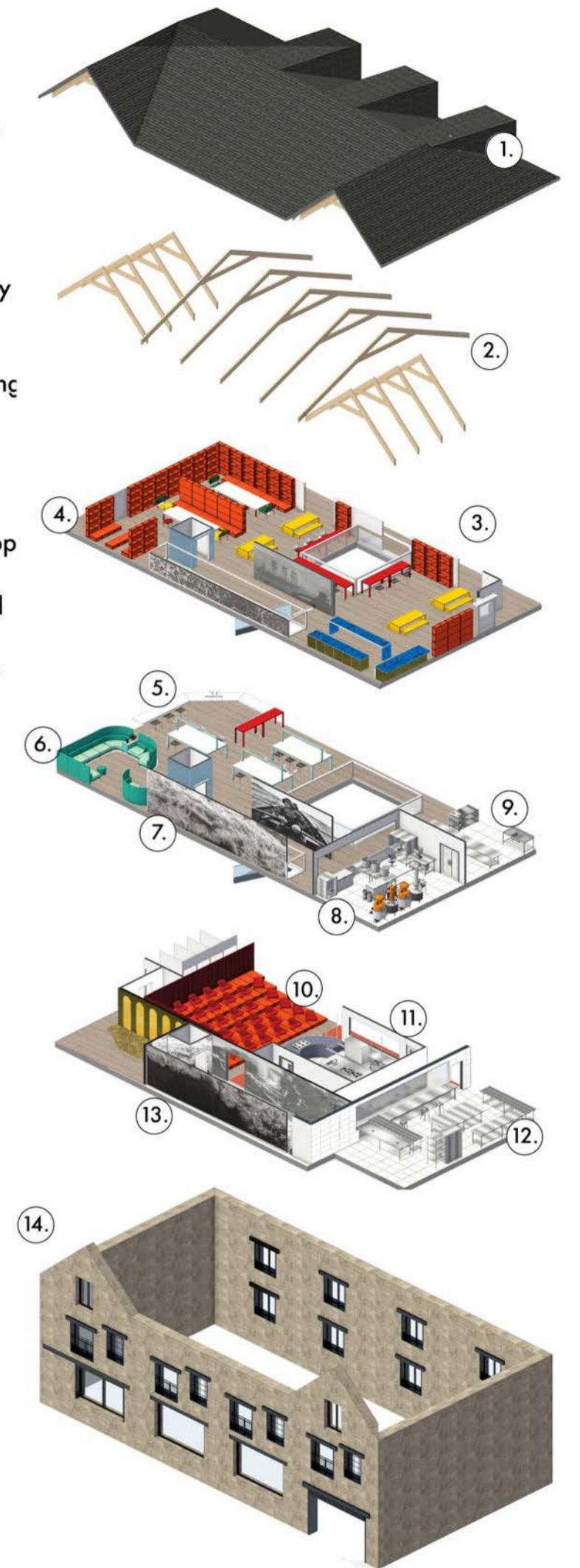
5. Collaboration/ workshop area
6. Fisherman's meeting and chill out area
7. Tide wall set to Newlyn's tide
8. Closed bioplastics lab
9. Open bioplastics lab

### GROUND FLOOR

10. Anatomy theatre
11. Cooking demo area
12. Shellfish processing
13. Storm corridor

### ORIGINAL BUILDING SHELL

14. Thick granite stone



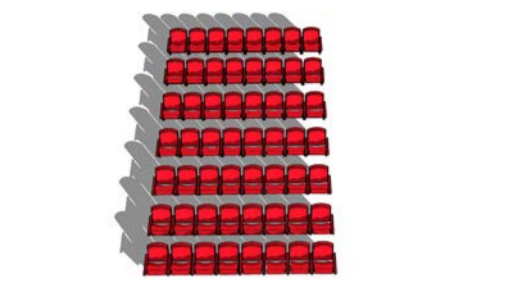
02 Plisk First Floor Scale: 1:100 @ A3

03 Plisk Second Floor Scale: 1:100 @ A3

# EDUCATE. EAT. MAKE.

## MATERIALITY

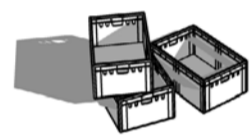
### SUSTAINABILITY STRATEGY



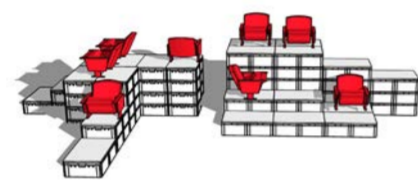
CURRENT THEATRE LAYOUT



DISRUPT, DISPLACE AND RE IMAGINE



DISCARDED PLASTIC FISHING PACKING BOXES



ADAPT, REUSE, RECYCLE



## SHELLFISH PROCESSING

### Mood board and visual



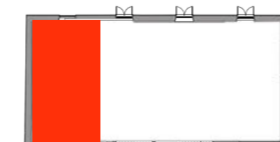
#### SHELLFISH PROCESSING

1. Tube Pendant H by lichtprojekte 2. Box panel ceiling lighting 3. 50cm x 50cm white tile from Topps Tiles 4. Stainless steel commercial kitchen fittings and workstations from Butchers Equipment warehouse.



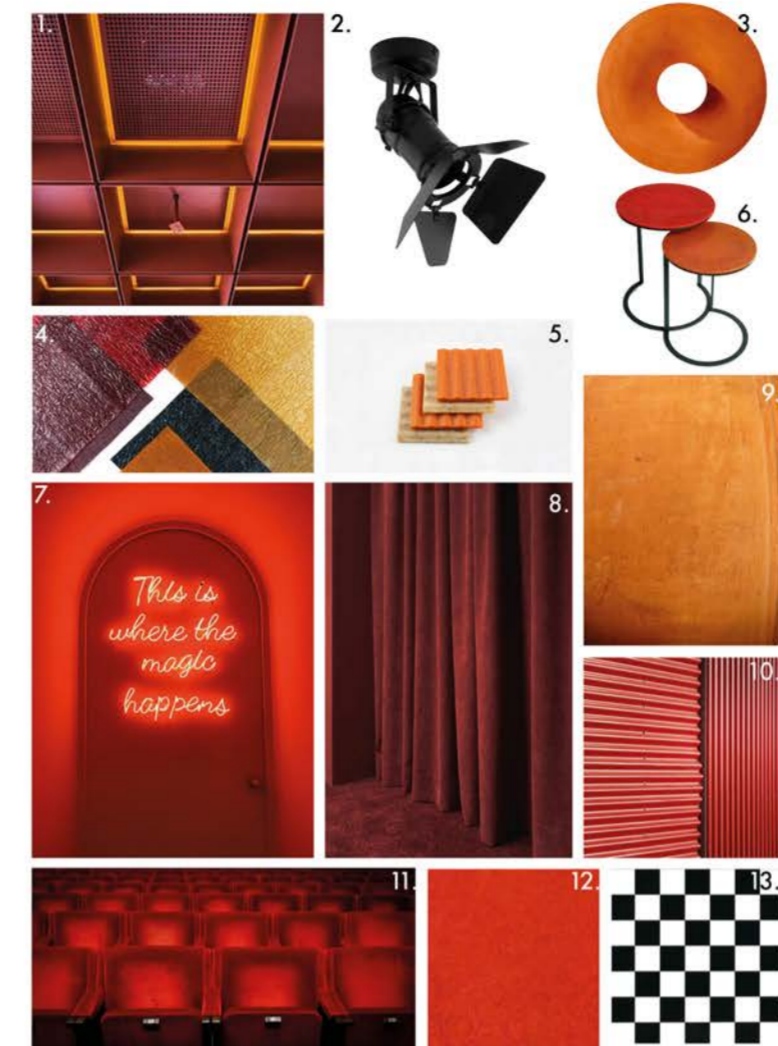
\*Visual of the shellfish processing area, visitors get to look in whilst making their way to the anatomy theatre, this area is in stark contrast to the confusion of being 'washed' about in the storm corridor and the rich reds and oranges encountered in the anatomy theatre (see next page)\*

#### Key



## ANATOMY THEATRE

### Mood board and visual

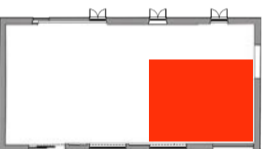


\*Visual of visitors seated in the anatomy theatre watching a cooking demonstration and learning about sustainable seafood whilst enjoying Plisk lobster popcorn! \* Note \*Tomtex leather wall application with In Common With wall light and the re purposed discarded plastic fish boxes as seating.

#### ANATOMY THEATRE

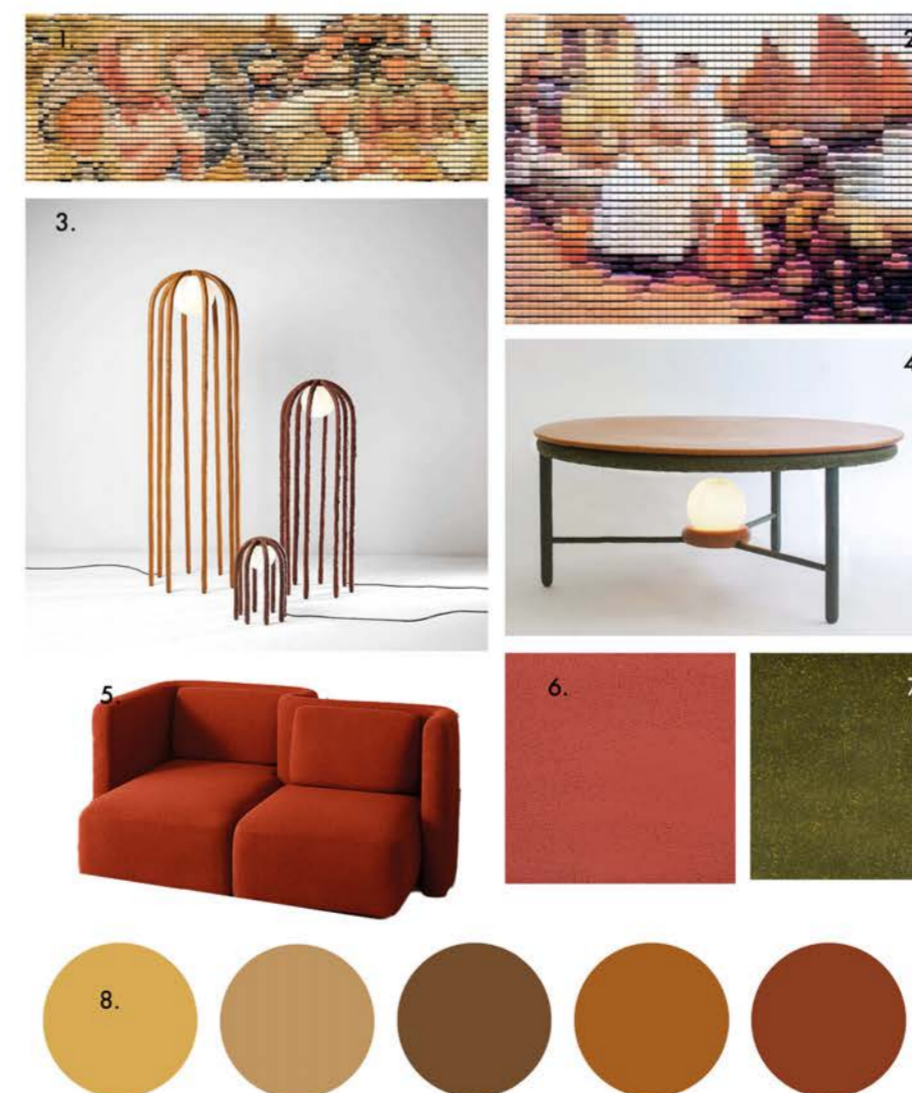
1. Boxed panelled lighting over cinema chairs 2. Stage lighting over cooking area 3. Surface mount wall light from In Common With 4. Tomtex leather made from shellfish waste wall panels 5. 'Tomato jam' fluted panels made from expired lentils from Otton studio to panel kitchen work stations 6. Side tables for anatomy theatre made with expired lentils from Otton Studio 7. Led tube word lighting 8. Red velvet curtains from existing building 9. Orange chalk paint from detalechp 10. Red sheet cladding from Minionda for bar area 11. Red velvet cinema seats from existing building 12. Forbo Marmoleum commercial sustainable vinyl flooring for processing pass and anatomy theatre 13. Amico chequered flooring for kitchen area and to be seen through the void.

#### Key



## MOOD BOARD

### Fisherman's rest and cafe/shop area look and feel



#### FISHERMAN'S REST

\*Walter Langley a 19th century Newlyn artist inspired by his fishing subjects will be re imagined in modern frescos\*

1. Fresco wall of Walter Langley's waiting for boats painting made by Studi Vertu 2. Fresco wall of Walter Langley's the greeting painting made by Studi Vertu 3. Açafrao & Urucum, Large Light and small table lamp by Cultivado Em Casa 4. Coffee table made from waste palm leaves from Otton studio 5. Saba Italia modular sofa 6. Clayworks Cornish sustainable plaster in Red-01, Red-03 and Blue-07 6. Yellow chalk paint from detalechp 7. Mark product sustainable flag bench and table made in Cornwall 8. Colour palette pulled from Walter Langley painting.



#### CAFE/SHOP/ SHOWROOM AREA

\*Walter Langley a 19th century Newlyn artist inspired by his fishing subjects will be re imagined in modern frescos\*

1. Fresco wall of Walter Langley's Local Critics painting made by Studi Vertu 2. Fresco wall of Walter Langley's the greeting painting made by Studi Vertu 3. Pastille vanity wall light by Rich Brilliant Willing in vermilion red 4. Mark product sustainable loop chair made in Cornwall 5. Clayworks Cornish sustainable plaster in Red-01, Red-03 and Blue-07 6. Yellow chalk paint from detalechp 7. Mark product sustainable flag bench and table made in Cornwall 8. Colour palette pulled from Walter Langley painting.