

Welcome to the Sexual Health Clinic:

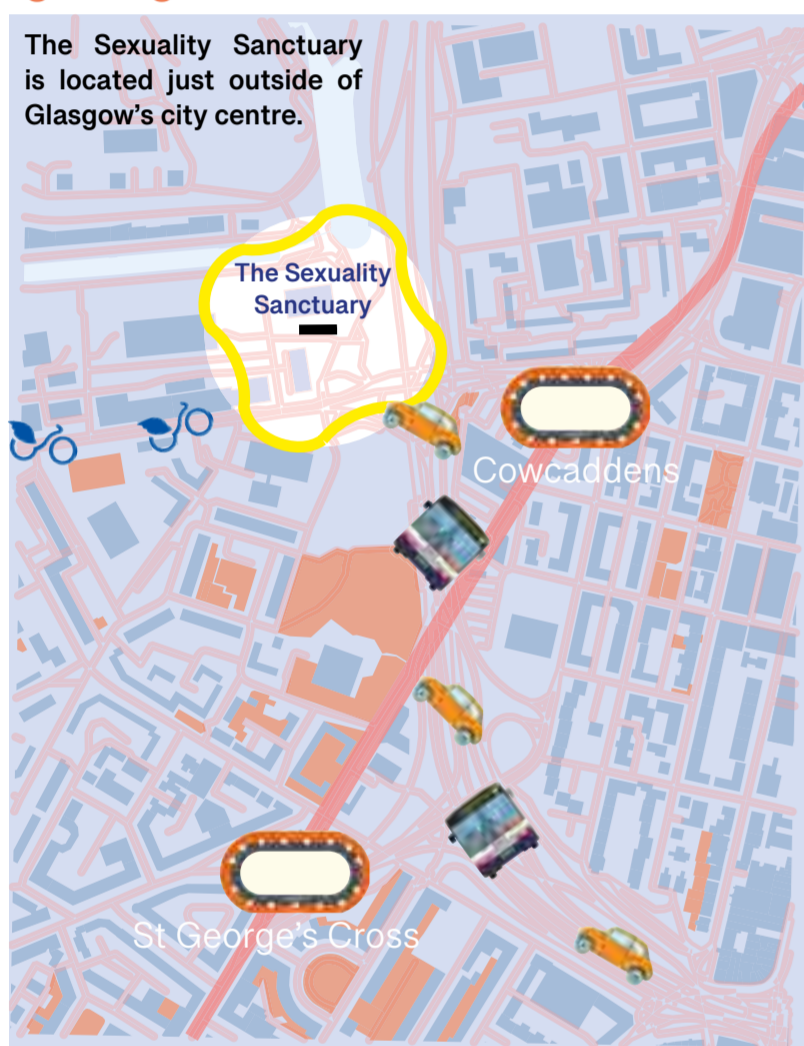
THE SEXUALITY SANCTUARY



Embrace Health, Embrace Yourself

getting there.

The Sexuality Sanctuary is located just outside of Glasgow's city centre.



transport.



train (7 min walk from both Charing Cross and Queen Street Train Station.)



bus (No. 7, 68, 71A, 72, 75 and M3 bus routes from Buchanan Bus Station (Garscube Road bus stop))



bike (NextBike station 15 min walk from Civic House heading north on Garscube Road.)



car (2 minute drive from M8 motorway (Junction 17))



subway (3 min walk from Cowcaddens subway station, 7 Minute walk from St George's Cross subway station.)

these are our guests and patients.



fatimah

Fatimah just moved in from Indonesia to Glasgow, she wants to have a check up on her sexual health since she feels intimidated by the sexual health clinics back at home.



grace

Grace is a disabled person and has finished her birth control pills. The clinic is disabled-friendly so, she went to the pharmacy in the sexual health clinic to pick some more up.



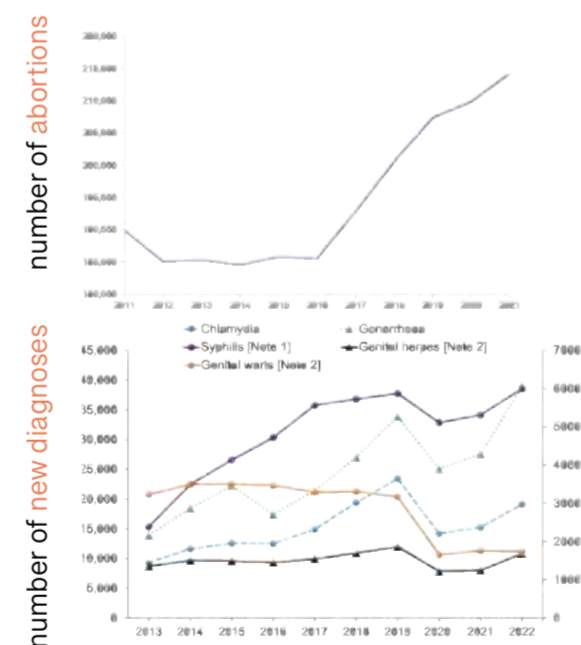
alan

He has been feeling unwell and believes his sickness may be from unprotected sex. He's here for an STI testing and consultation.



these are the statistics from the UK's government website. based on this graph, there is a need an urgency for patient care and education. people must not suffer for something that can be preventable.

the data.



lucy + sam

They're here to see a sex therapist and want to discuss private matters in their life. Sex therapy can help couples communicate about desire discrepancy, voice their wants and needs, and find common ground in their relationship.



keith + charles

They're here to attend a public talk about sexual health in the conversation zone. There, they can listen to the professionals speak about it and have a chance at asking them questions.



get to know me!

With the rise of abortion rates, unwanted pregnancies and STDs in the UK, embarrassment and the lack of knowledge are the leading causes of people not getting the care they need. Often (in particular, the people who feel the system has neglected them,) people coming to a sexual health clinic will feel overwhelmed and intimidated. Although physical health is promptly taken care of, the patient's mental well-being experiences neglect and shame when they should be proud of taking care of themselves.

The goals in designing The Sexuality Sanctuary clinic are rooted in education, reducing stigmas around sexual health, and incorporating diagnosis, treatment, and technological innovation for prevention and control. The clinic should rise above the traditional model of a healthcare institution and embody today's society with a strong emphasis on mental health.



building history.

The building, has a unique history with the emphasis on Civic. That building symbolised people's rights when they were a print press as they advocated for what was right. It then became a co-working space and an occasional events hub. I thought it fitting for a sexual health clinic as the building always had a purpose: it always revolved people and human rights.

The building is known for its rich history, thoughtful redevelopment and vibrant role in contemporary Glasgow. It embodies the city's dynamic blend of past and present, activism and innovation, making it a symbol of both heritage and progress for change.

The location was ideal because the greenery around it became a calming space for people to access the space without much judgement. Although the building has always been about uplifting each other, there was never a good attempt at making the space accessible for disabled people and wheelchair users. Ramps have been added on to the exterior with 2 points of entrances for the comfort of the user.



the building through the years.



concept posters.

organic shapes explored through colour and forms.

these are posters that I made to match each individual's personality. each poster is colourful, whimsical and fun. the complimenting colour palette coupled with the forms like circles, softens the visuals but the purpose of it is punchy and impactful. I want people to feel comfortable coming in whilst having that element of fun.

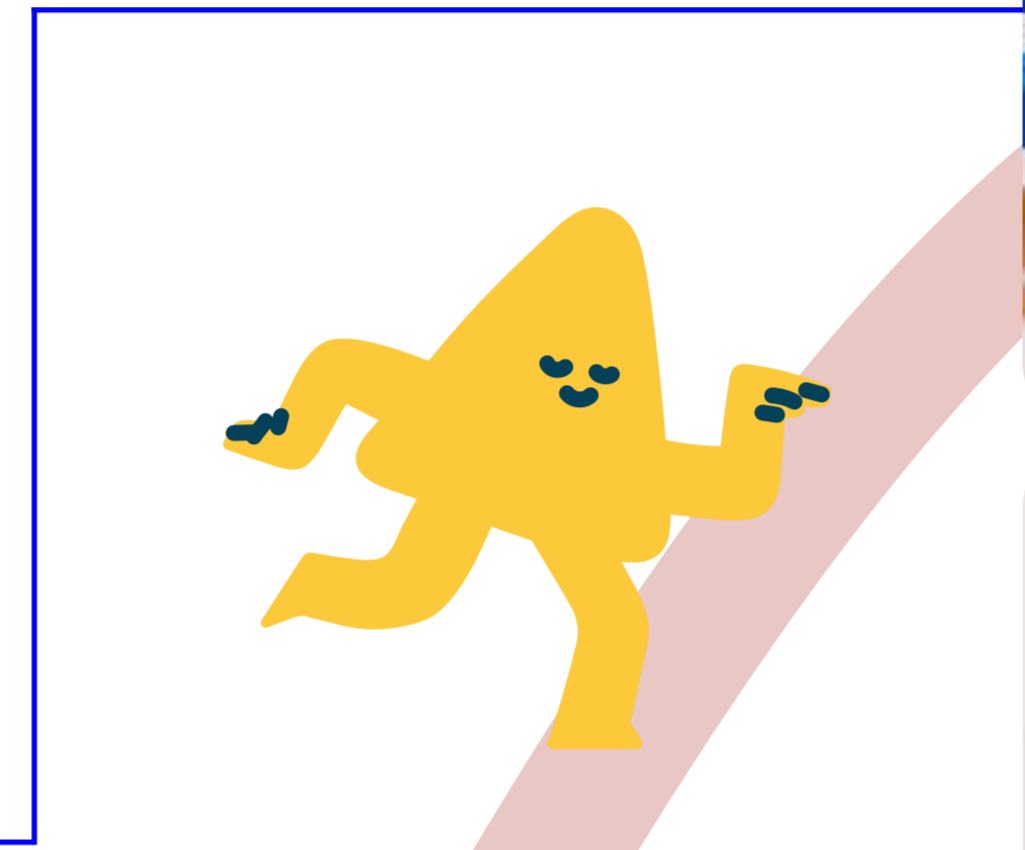
the slogan for this poster is "learn more about yourself" because if people truly understand how to take care of them selves, they would be more inclined to make better choices and decisions. the design for the posters envelop the education hall to show that everyone is accepted and that anything they ask is not stupid.



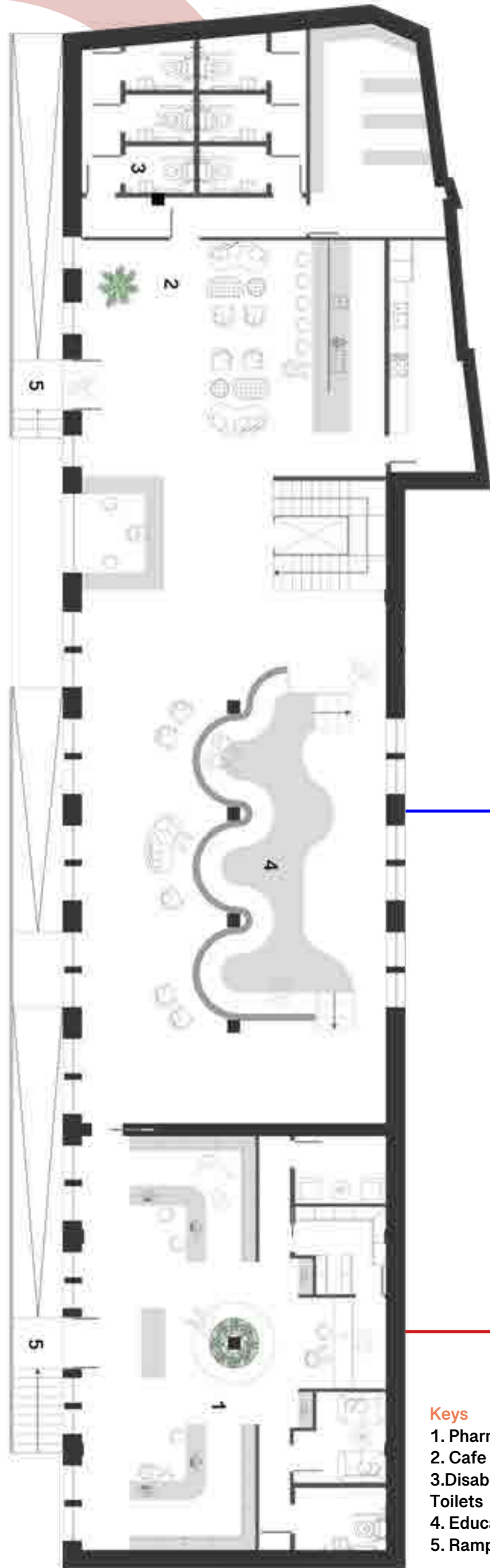
ground floor overview.

the ground floor is open to all members of the public. the purpose of this floor is for people who want to dip their toes into this sexual health clinic but are afraid to commit. all services on this floor are open for people to use freely. the talks hosted in the education hall can be used by all ages. the pharmacy boasts all things sexual health from consultation, to sex toys and medication.

education hall.



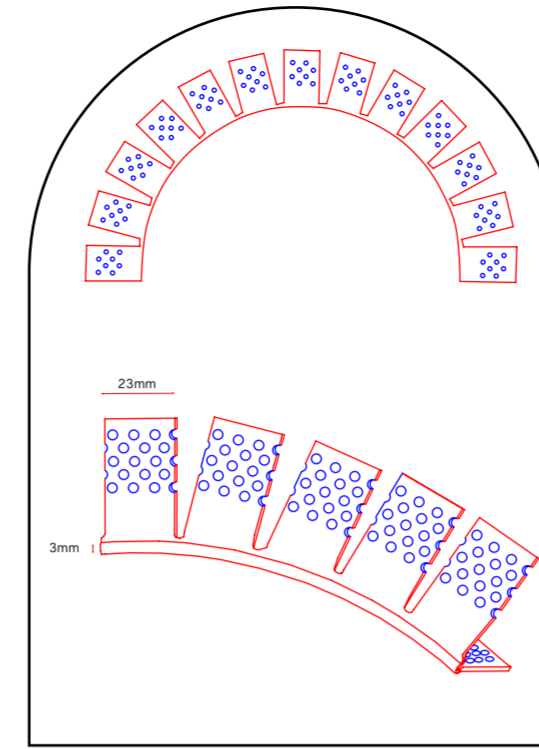
pharmacy.



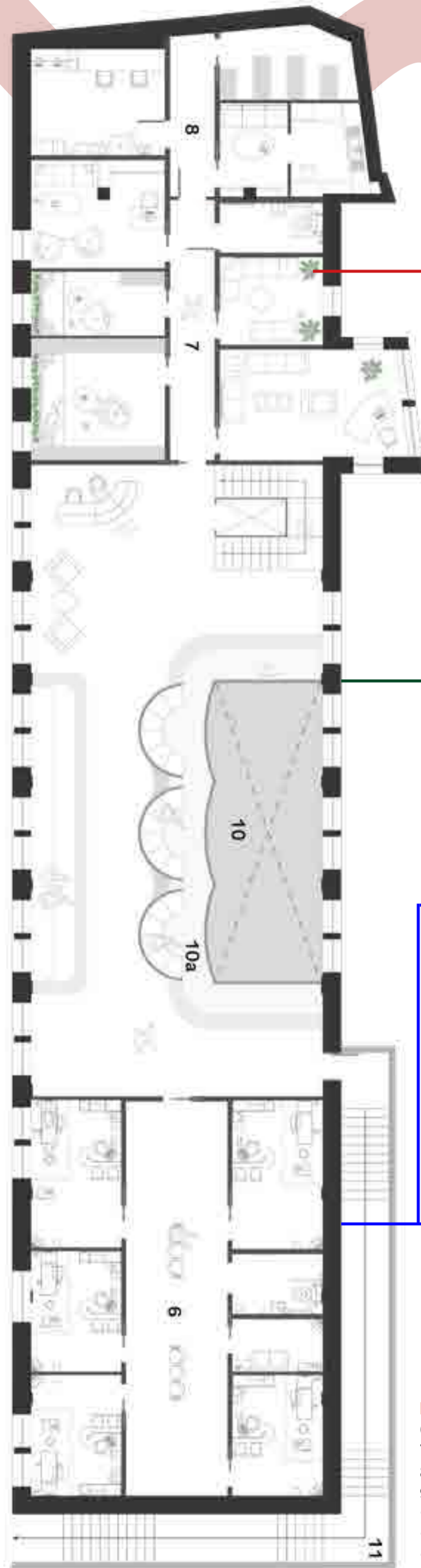
- Keys
- 1. Pharmacy
 - 2. Cafe Entrance
 - 3. Disabled-Friendly Toilets
 - 4. Education Hall
 - 5. Ramps + Stairs

first floor overview.

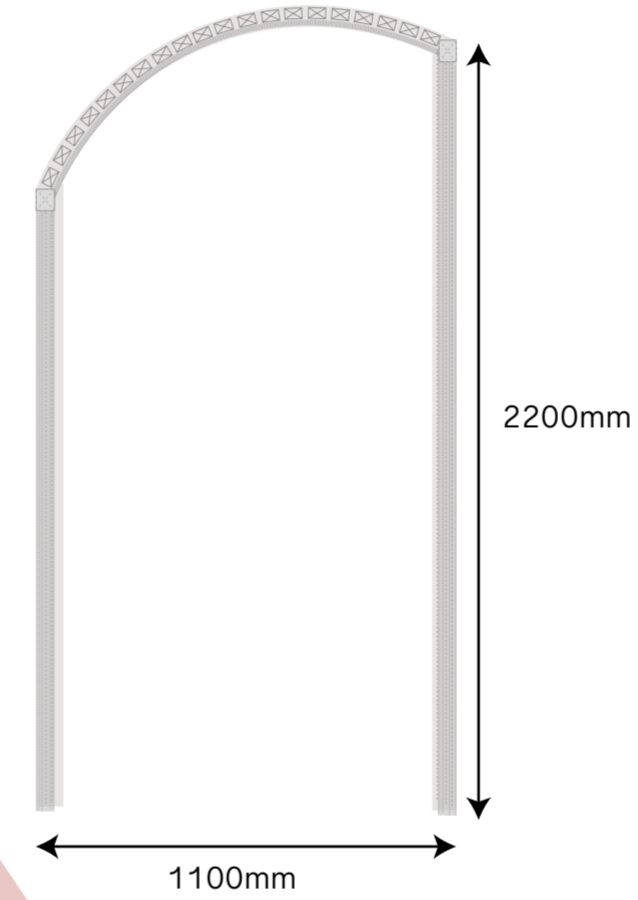
the first floor is a more private space, offering counselling services and consultation services. it is also for the people who are too shy to participate in the talks down below so they can listen in from the top where the balustrades may hide them so they will not be seen. privacy in a sexual health clinic and it is important to give them options.



counselling room.



arched door detail.

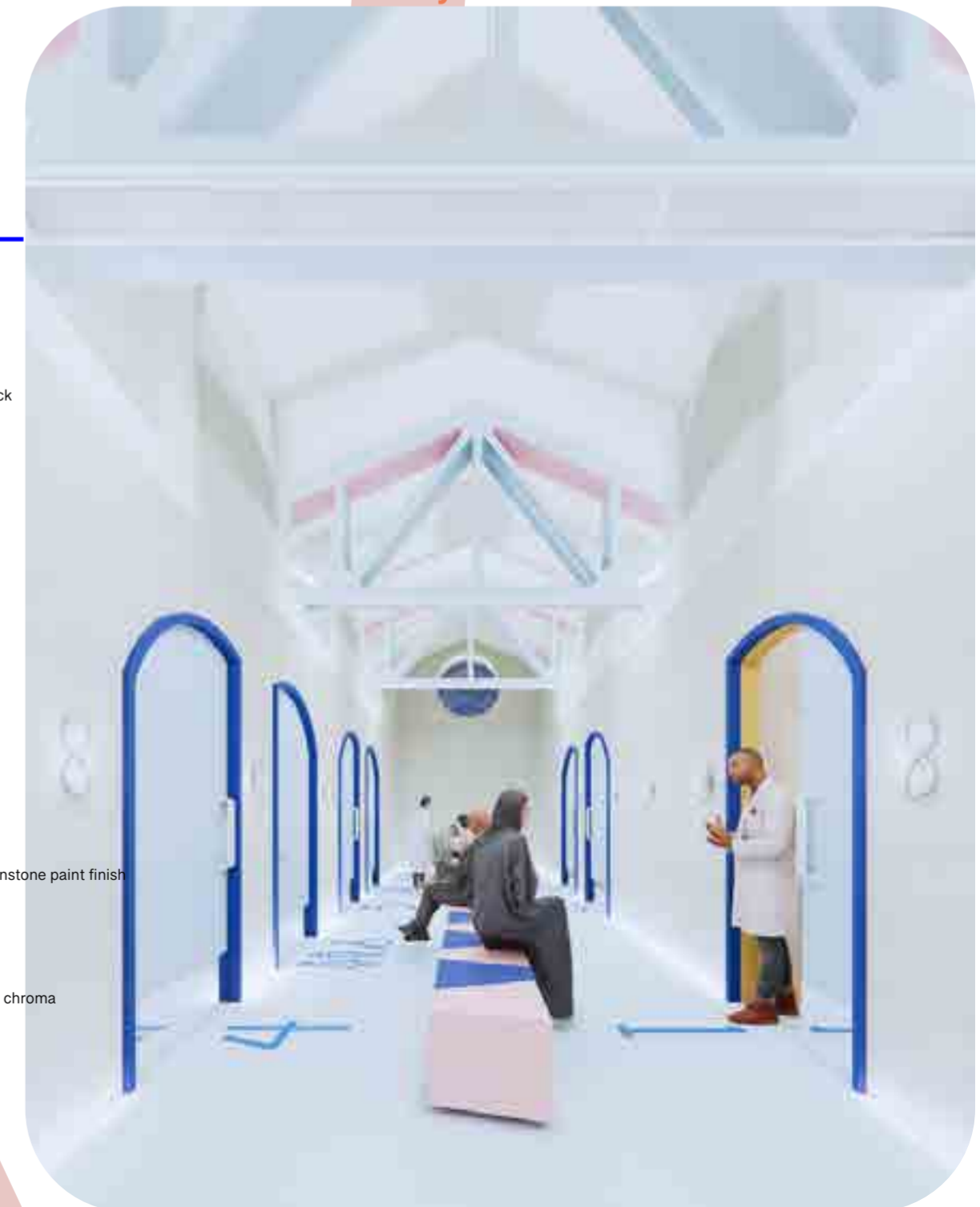
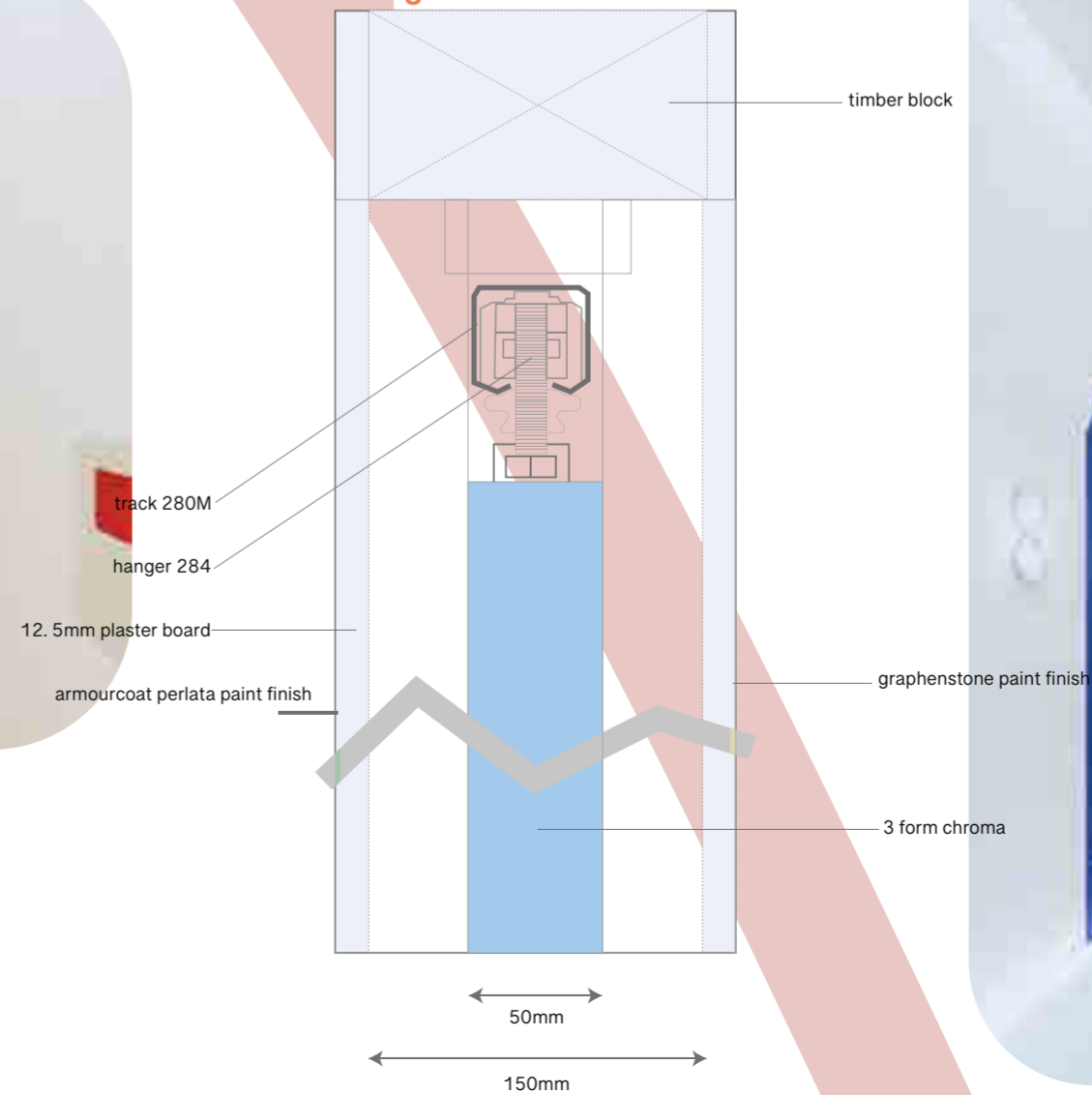


consultation hallway.



consultation room.

sliding door detail.



- Keys**
- 6. Consultation Rooms
 - 7. Counselling Rooms
 - 8. Staff Area
 - 9. Waiting Area
 - 10. Void
 - 10a. Balcony Seats
 - 11. Fire Escape

scale 1:5

surface design show 2024
(material picking)



The theme for 2024 focuses on the ambition to design well while doing good – with a conscious effort to protect our planet by aiming for zero waste manufactures and sustainable alternatives. The natural world remains a key influence on the design industry, inspiring new techniques and processes, as well as offering a wealth of material substitutes

Taking all the key characteristics into account, I wanted to know where I could learn more about innovative materials and so, I went to London's Surface Design Show. I was fortunate enough to attend this year when an opportunity presented itself.

- I attended the show on the 7th of February 2024.
- I visited booths.
- I collected samples.
- I attended talks.
- I asked questions.

In summary, these materials are chosen for their balance of durability, sustainability, cost, and their suitability for sterile medical environments. Their non-porous surfaces, ease of cleaning, and compliance with safety standards make them ideal for healthcare settings. The sustainability aspect also aligns with modern environmental concerns, ensuring they remain relevant in a world increasingly focused on eco-friendliness.



YI LIN KOH
STUDENT
GLASGOW SCHOOL OF ART



114-42-0-675105

VISITOR

@surfacethinking #SDS24

material + colour choices



consultation area

door = 3form chroma

why?
- chroma is a thick resin offering high clarity and light transmission. I wanted to create private spaces within the consultation area without reducing the light transmission.

room walls = graphenstone paint
+ hallway walls = armourcoat paint

why?
- (room) it provides a wellness aspect as the paint absorbs CO2 from the air during the drying process. the colour range is fun and dries to a mid sheen (satin) finish.
- (hallway) provides a really warm, grand, pearlescent finish to welcome people.

ceiling = armourcoat acoustic plaster

why?
-Its flexibility allows for custom shapes and curves, enabling creative ceiling designs without compromising on aesthetics whilst still retaining its function.

table = polygood (legs) + rehau's rauvisio noir (top)

why?
-polygood has these beautiful flecks of plastic in it which can make a space look more interesting and fun. rehau will make a good table top because it has anti-fingerprint technology whilst still having a range of colours and finishes.

chairs = kerrock

why?
-it's flexible enough where I'm able to mould it into any shape or form I want it to be, making for an interesting design.

sink = hanex

why?
-for a non-porous material, it's quite nice to touch. the joinery is also very seamless, leaving no gaps.

floor = stratum resin floor

why?
-stratum allows for sound absorption while giving you customisable designs on the ground. could be good use of wayfinding.

shelves = polygood

why?
it has the potential to match with the table legs without distracting the whole space.

it was important for me to understand the layout of the education hall as it is such an important aspect of The Sexuality Sanctuary. The comfort levels on both floors were important to me as I wanted people to engage more in the talks hence it is why I included a conversation pit so that I brought more of a cosy element to the space.

physical model making process.

