



/Community Exhibition Space/

Name: Jingyi Liu

Site: Govanhill picture house, Glasgow

Key works: Community exhibitions/ Social spaces/Social justice/Govanhill multiple culture/ Resident-artist collaborations

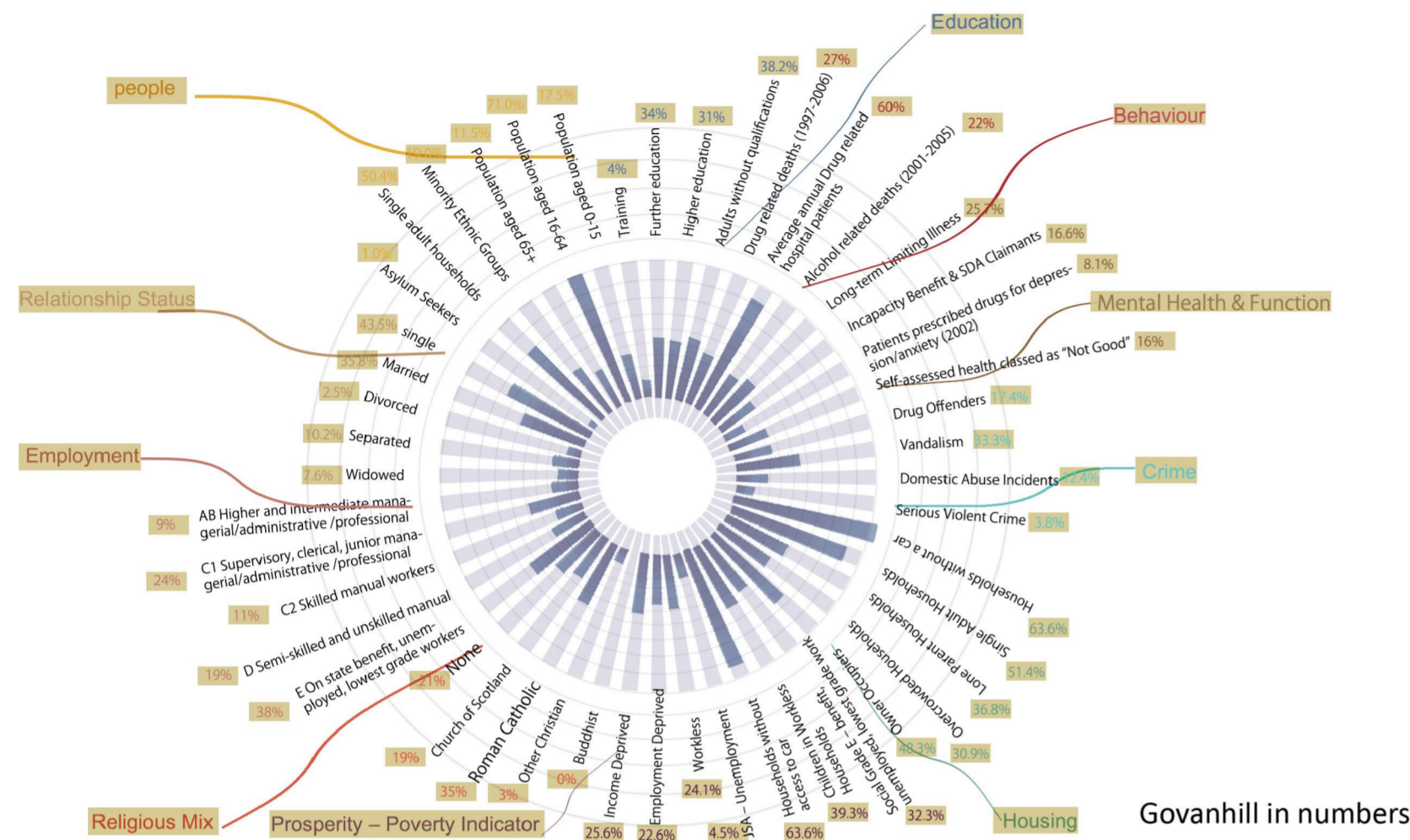
Target audience: Govanhill residents/ Visits/Artistic

“Bringing together derelict buildings, different groups of residents and art and cultural activities is something I explored in this project.’ One of the things that ‘Community Exhibition Space’ consciously does is to bring together different groups of people where appropriate. Thus, in the context of the Govanhill community and multiculturalism, the project celebrates the history of the place through exhibitions, creating a sense of belonging and increasing community cohesion. Communication and connections are made through the café, workshops and small theatre. The essential function of this space is to exhibit and socialise. Residents can also collaborate with local artists to organise exhibitions by telling their own experiences and stories. This is a project that brings together artists, children, young people, older people and people of different ethnicities. This will contribute to the goal of making the ‘Community Exhibition Space’ a socially equitable space.”

Summary of Govan

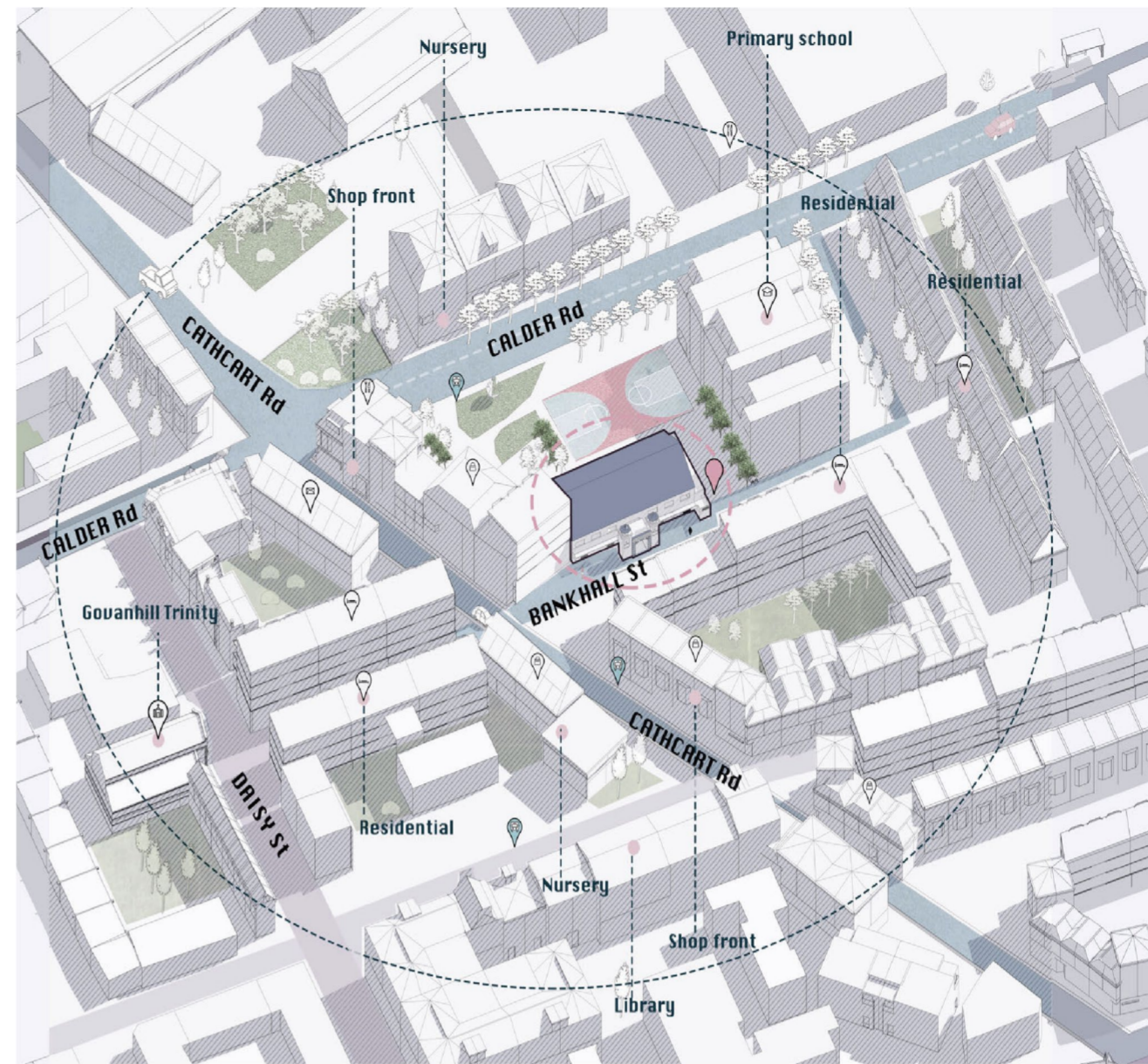
Read the Govanhill Area Plan to learn about the various social problems in the area. I have created charts to explain the above areas based on the basic data collected.

The data charts show the challenges faced by some residents. Some of the adverse life circumstances have a negative impact on their mental health, which is reflected in alcoholism, drug use and an obsession with recreational violence. Stress and neglect of mental health have led to social problems in the area.



Govanhill in numbers

Site Information



Social issues

There is inter-ethnic segregation in the area



Impression of untidy streets



The lack of space for youth activities keeps them off the streets.



Children wandering in the street

Overcrowded housing

Over 65s report a sense of alienation and loneliness

Some people said they were afraid to use the spaces after 6pm.

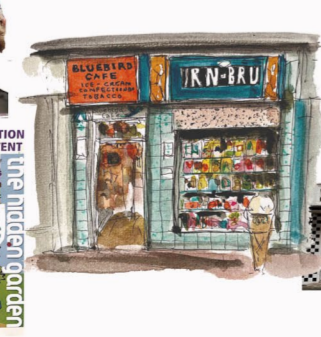
Positive elements

Govanhill is an ethnically diverse area. And Govanhill has a strong sense of neighbours.



There are a variety of communities and organisations

There are unique shops here. There is also a cafe culture.



There are many artists, crafts people, and performers who live locally.



Govanhill has a unique architectural and cultural heritage

The Govanhill Picture House is an Egyptian-themed cinema built in 1926. It remained in use as a cinema until 1961 and then as a bingo hall until 1974. From the early 1960s until the late 1980s it served as a warehouse and headquarters for the John Greenlees Ltd shoe shop. The building was then used as a warehouse. Due to its poor state of repair and general neglect, the building was abandoned.

The site is easily accessible by bus, train, car, and on foot, and there are two main green spaces in the vicinity: Queen's Park and Govanhill Park.

The main building types in the area are residential and commercial buildings, with clothing and grocery shops predominantly located on the ground floor of residential buildings.

Users



Visitors
(Adam, 27)

"Unique shops and cafes, different exhibitions make me want to know more about Govanhill"



Artiste
(Bob, 33)

"The multicultural and historical background of Govanhill makes me excited"



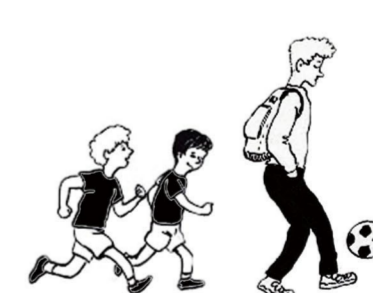
Community
(Caelyn, 23)

"It can be a happy community sometimes, most of the happiness comes from the fact everyone knows each other so there's always a helping hand if you need it"



Residents
(Dorid, 42)

"Hopefully it will provide a safe space for more leisure activities"



Teenagers
(Ennio, 15)

"After school, I wanted a place to develop my imagination and keep me off the streets."



Elder people
(Fiona, 65)

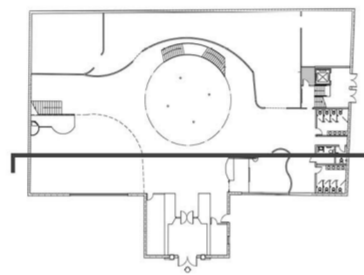
"Over 65s report a sense of alienation and loneliness. I think it would be good to have a place where younger and older generations can interact with their busy lives"



Migrants
(Grace, 34)

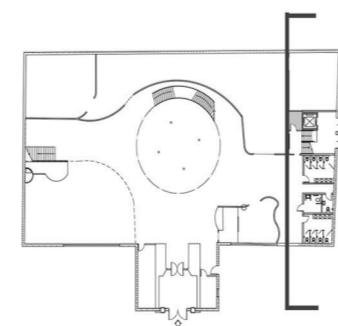
"The area has a lot of character with a mix of cultures and it creates interesting conversations and life stories within the area."

Section

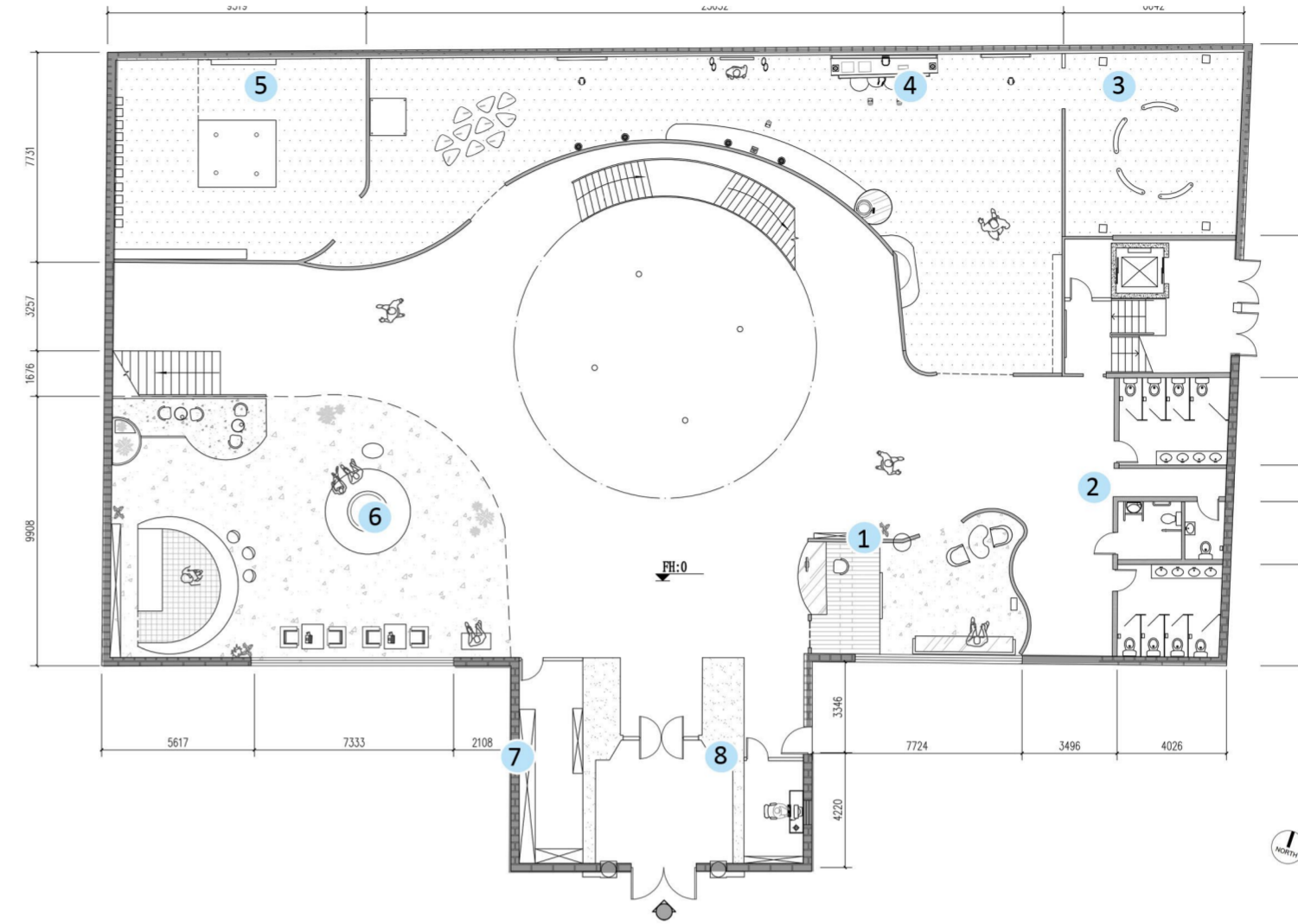


elevation facing
Bankhall street

elevation facing
Batson Street

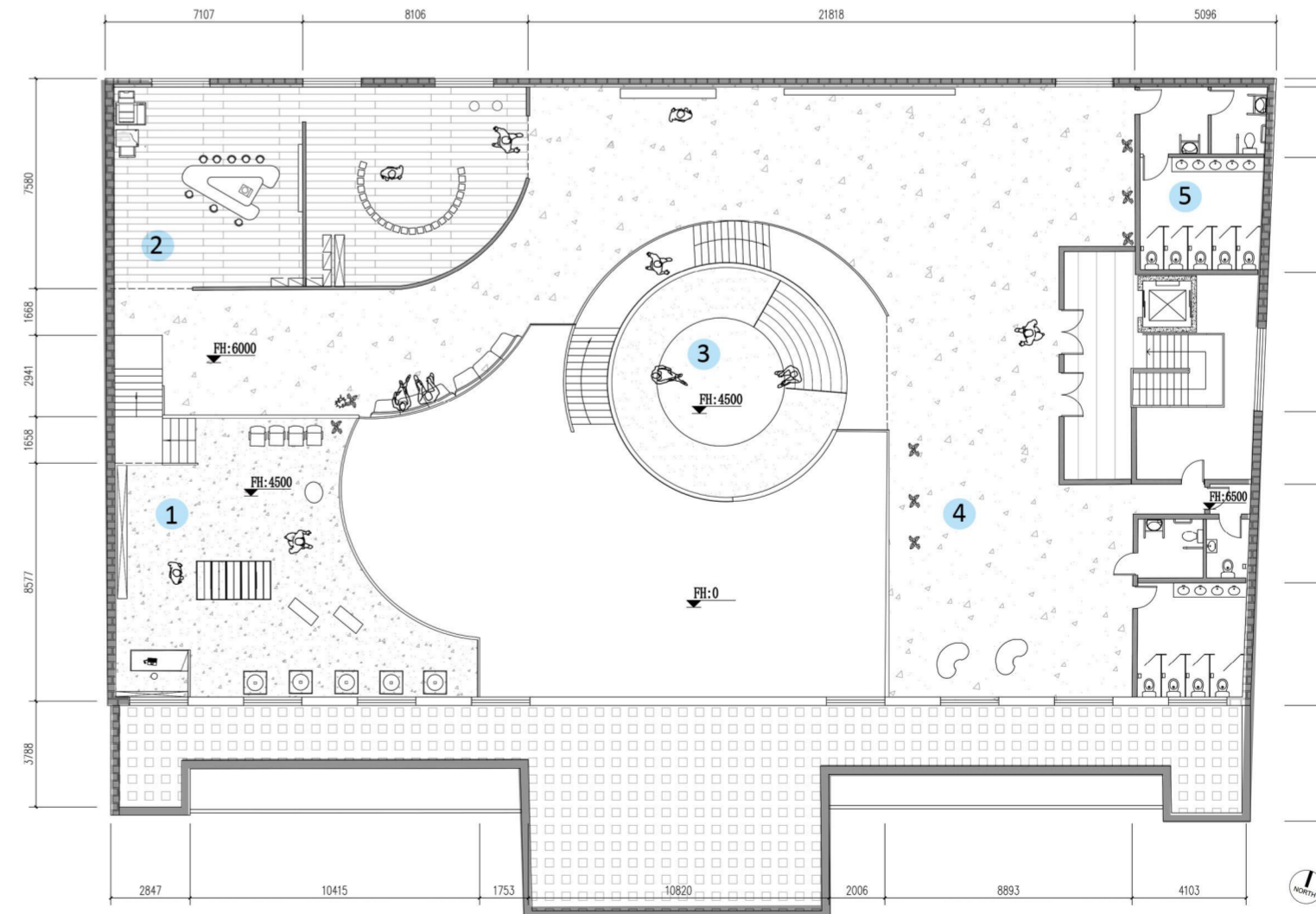


Plan



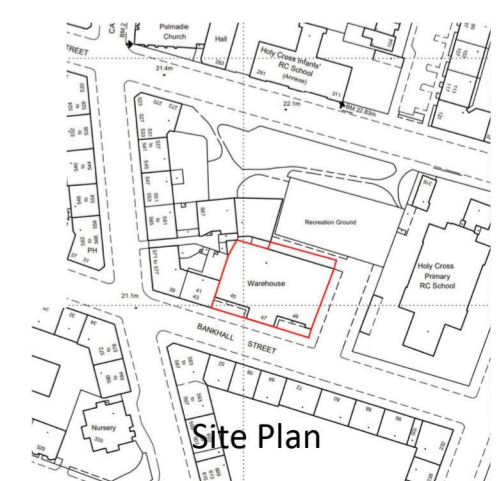
Ground Floor Plan (Scale 1:100)

- ① Reception&Snug
- ② Toilet
- ③ Exhibition - Echoes of the Past
- ④ Exhibition - Loved and Last
- ⑤ Exhibition - Objects Speak Louder Than Words
- ⑥ Cafe
- ⑦ Storage
- ⑧ Office



First Floor Plan (Scale 1:100)

- ① Shop
- ② Workshop
- ③ Mini theater
- ④ Upper lobby
- ⑤ Toilet

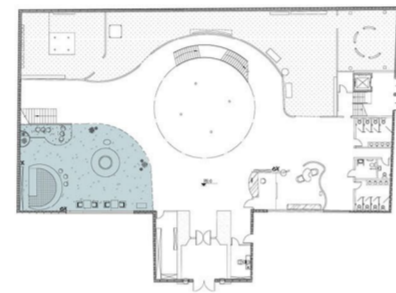


Site Plan

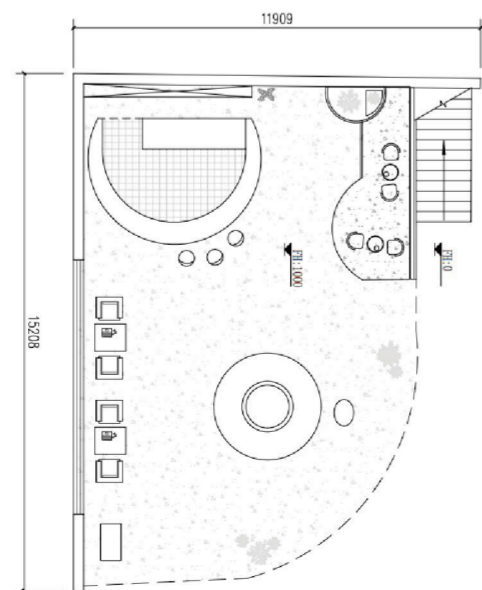
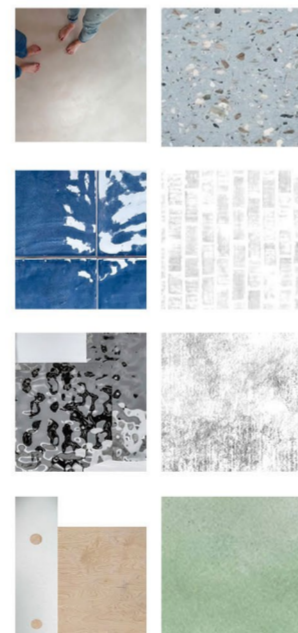
Proposal

Concept 01 'As gathering places for the community'

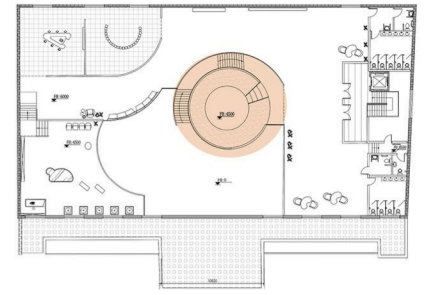
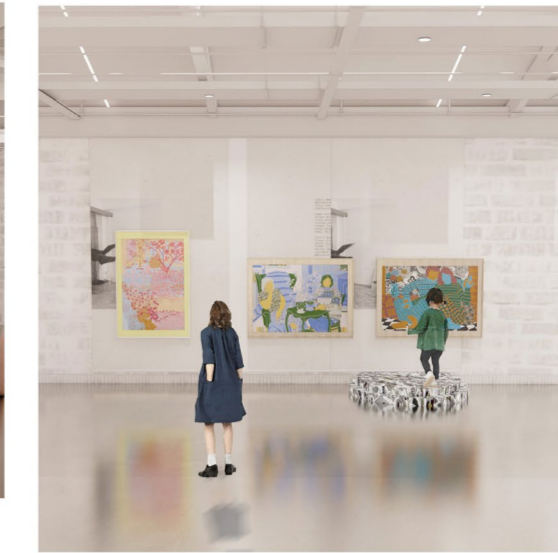
Multiculturalism has brought a richness to the area, but at the same time has created a social phenomenon of mutual exclusion and segregation. This has led to an impact on residents' sense of self-identity and the segregation of different groups. A meeting place (e.g. a café) dedicated to building meaningful relationships with the different parts of the Govanhill community. Creating a space that is accessible, safe and interesting for each part of the community. All are welcome.



Ground floor



A cafe with a relaxed and calm experience, a social space for the community exhibition space. Here you can enjoy the natural light and take a little conversation. The materials used in the cafe were inspired by the Govanhill picture house building itself. The use of tiles brings a refreshing visual and tactile experience.



Concept 02 'As the Film Projection Space'

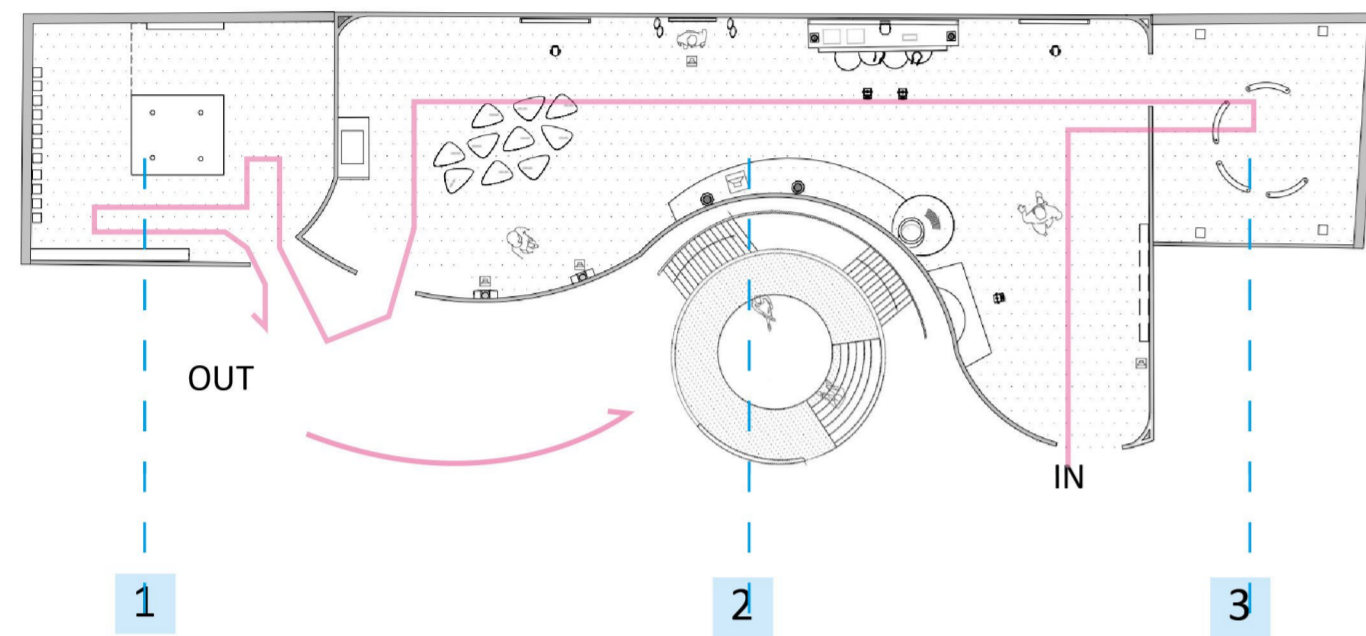
Govanhill has a long tradition of cinema, with the community once having six cinemas. This space is a community meeting place. It allows people of all ages, faiths and groups to stay and spend a few hours watching videos together. The Mini Theatre uses soft materials and provides a relaxing and healing atmosphere.

At the same time, there are many people working in the field of moving image in Glasgow. The Mini Screening Room is not just a scheme to create great memories and promote social activities, he also provides Glasgow's moving images makers with the opportunity to showcase their work. Films made by local filmmakers or films about local themes and issues can be used as a social group change

Concept 03 'As exhibition space'

The themes of the exhibition focus on the govanhill area, the daily lives of the people of the govanhill community, and events. As well as, the history of the govanhill picture house. The aim of the exhibition is to break the stereotypes that visitors have about the govanhill area and to make the inhabitants of the area more aware of their habitat. Creating a sense of belonging and increasing community cohesion.

Exhibition Theme 01-03 : From people's collective memory of govanhill to their personal memory



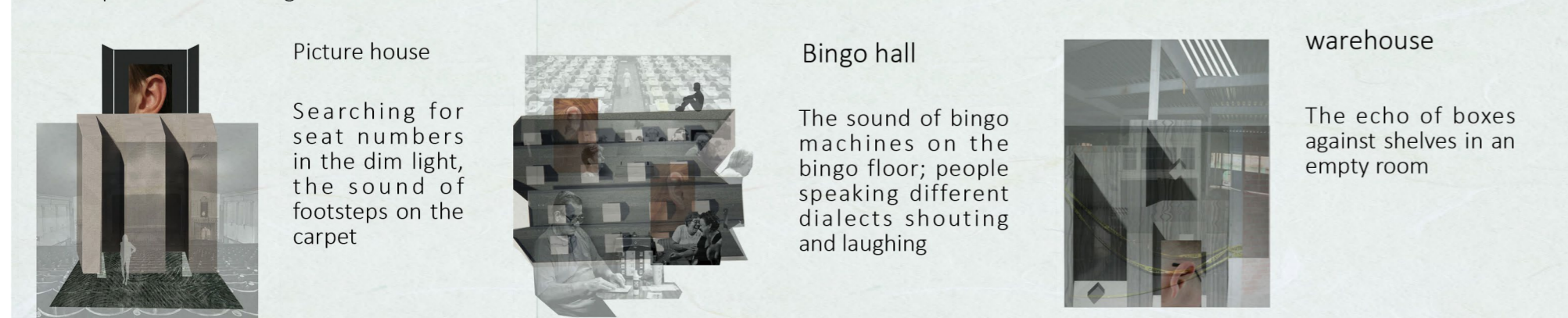
1 Exhibition: Echoes of the past

Exhibition tepy : Sound

Exhibition Theme.
Sound clips from the four historic use spaces of the site (govanhill picture house). The objective is to give visitors an insight into the history of the site. It takes the viewer back in time.

Sound provides information about the world beyond the visual realm. This section of the exhibition is a collection of sound recordings from four periods of site history. It includes a cinema, bingo hall, warehouse and abandoned. The viewer is deprived of vision in four spatial boxes. They listen to sound clips in headphones and perceive time and place through association. The four sound clips represent another sensory feature of the site, such as walking and recording footsteps that represent the material and texture of the floor.

Sound clip Associative collage



2 Exhibition: Loved and Last- Govanhill's Built Heritage

Exhibition tepy : Sound&projection

Exhibition Theme.
People's collective memory of a region helps create a sense of belonging. the exhibition evokes a sense of belonging to the region through a showcase of govanhill's built heritage. The individual's collective memory of a region is formed by the daily and major node memories generated by the individual through the specific geographical environment (eg. streets, buildings, etc.) and life situations. In this exhibition, I choose to use "group photo" as the carrier. And it shows the collective memory of the streets, schools, churches, shops and parks in the area through sound experience and projection.



3 Exhibition: Objects Speak Louder Than Words

Exhibition Theme.
A collection and display of objects cherished by the residents of govanhill. A new exhibition context for existing art projects. The goal is to enhance community cohesion through a shared and interactive experience of personal memories.

This is the start of the art project 'FONDS' at govanhill in August 2022. I have provided a new exhibition context for this project in the community exhibition space so that the project can continue into the future. The exhibition is about objects that have a special meaning for the inhabitants of govanhill. I have tried to relate them to the people and places that acquired them. The section of the room is a display shelf; a mobile place for personal stories and a container for people's memories and feelings. This place also supports visitors in bringing their objects into the exhibition shelf.

