

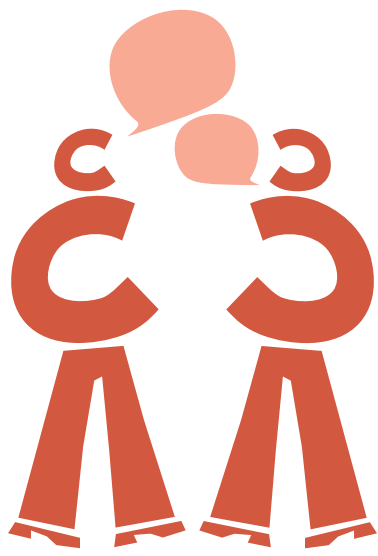
COPPER & CANVAS

ARTIST RESIDENCY PROGRAMME

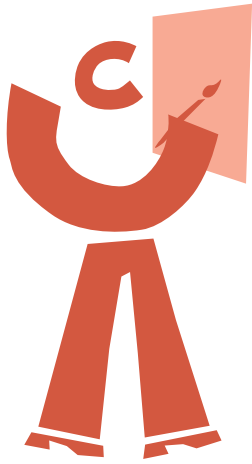
Copper & Canvas is a pioneering artist residency hub located on Glasgow’s vibrant Buchanan Street. As the first initiative of its kind in the city, the project is designed to promote Glasgow as a global cultural arts destination, offering a unique space where creativity, community, and contemporary design converge.



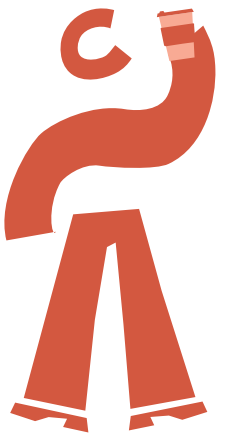
This project reimagines the historic BOAC building by Gillespie, Kidd & Coia as a vibrant creative ecosystem in the heart of Glasgow. Once a modernist icon, the building has been left abandoned — its potential overlooked. This adaptive reuse proposal restores its architectural significance, transforming it into a hub for artistic collaboration and innovation. Positioned beside the Gallery of Modern Art and Mackintosh’s ‘Lighthouse’, it is perfectly placed to serve the city’s growing cultural scene. As Glasgow’s global art presence expands, this project celebrates that momentum and offers visiting creatives a dynamic space to connect, create, and inspire.



COLLABORATE



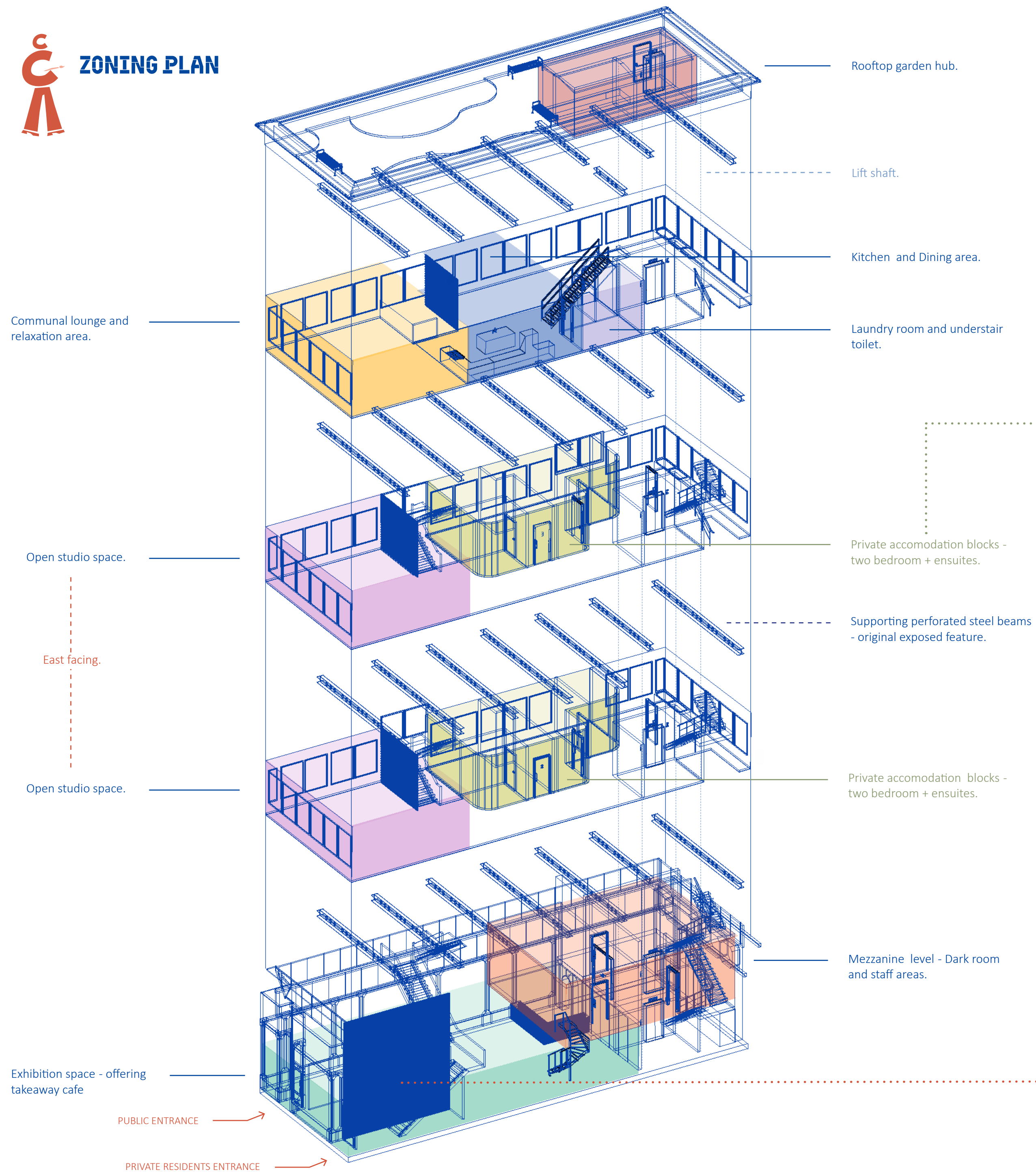
CREATE



EXHIBIT



ZONING PLAN



This residency programme is designed for established, self-funded or sponsored practising artists. Hosting up to four residents at a time, it offers an exclusive, bespoke experience that supports artistic development within a collaborative and inspiring environment. Residents have access to high-quality facilities, providing opportunities to advance their practice and build meaningful professional networks.

ARTISTS IN RESIDENCE



SARAH

Figurative painter based in Amsterdam - Looking to explore Scotland



MOHAMMAD

Sculptural artist based in Marrakesh - Wanting to expand to an international audience



MINA

Abstract artist based in Dubai - Diversify her style



SIMON

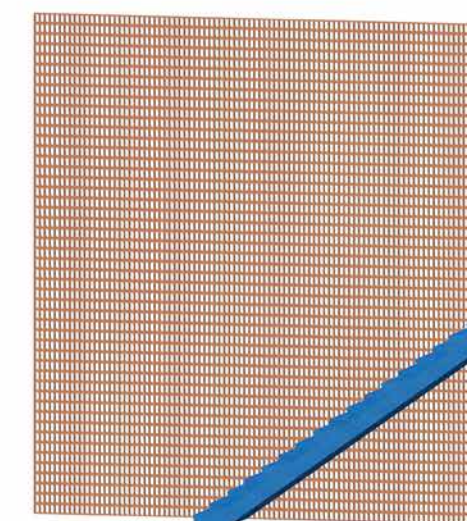
Still life artist based in London - Expand his audience outside of London.

REINSTATED CENTRAL STAIRCASE

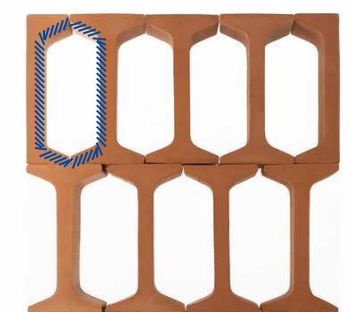
COMMUNAL HUB

2ND FLOOR STUDIO

1ST FLOOR STUDIO



Acting as a vertical spine, the reinstated staircase not only connects the studio spaces but also serves as a key architectural anchor. This reinforces a unified design language throughout the interior.



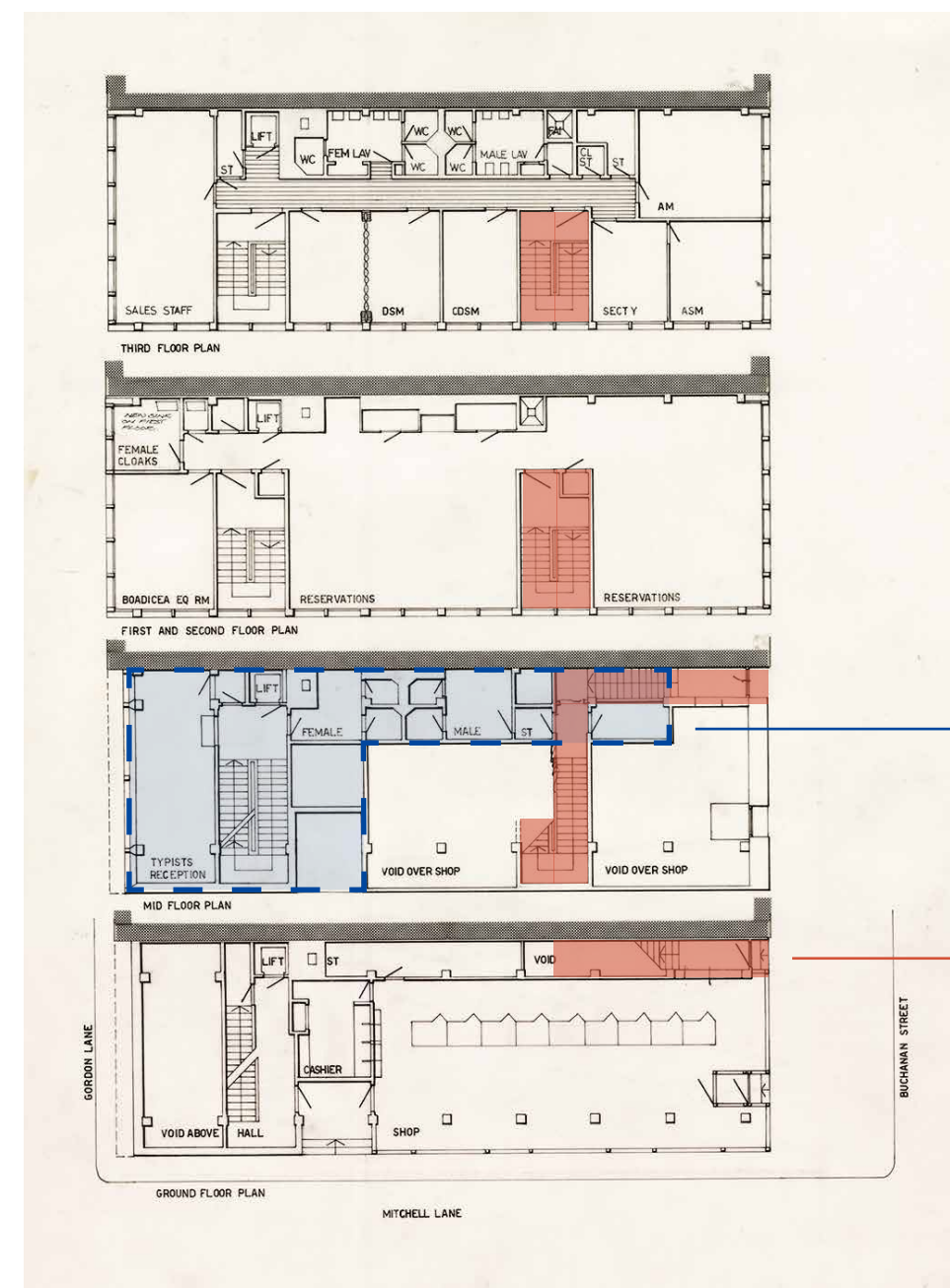
A perforated tile by Summumstudios was selected to echo the motif of the building's façade. This allows for the introduction of a level of transparency essential for natural light penetration and visual connectivity throughout the stairwell.



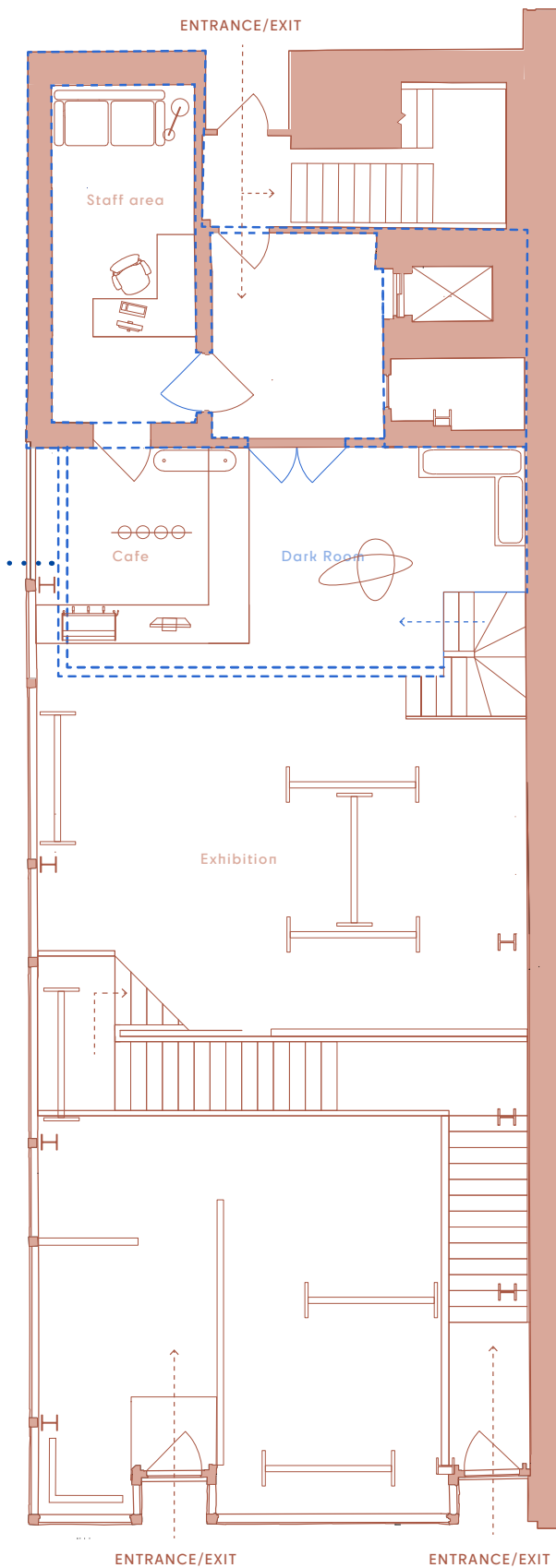
INTERIOR FINISHES

To reflect the building's character and history, the original brickwork along the north interior wall is intentionally exposed, revealing its age and offering a subtle narrative of its past. This exposed brick continues across all three levels, establishing a consistent visual language throughout. A recycled copper-clad feature wall in the exhibition area mirrors the exterior copper cladding, creating a cohesive material dialogue between inside and out. Alongside the prominent hexagonal perforated brick wall, these elements serve as intentional reminders of the building's architectural identity woven throughout the interior.

ORIGINAL BOAC FLOOR PLANS



Ground Floor and Mezzanine

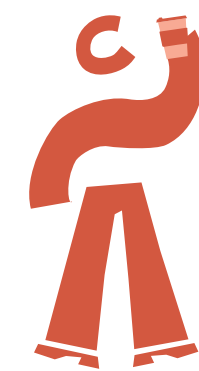
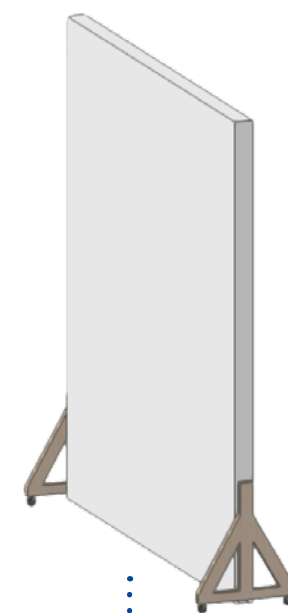


Reinstating the previously removed mezzanine level, makes effective use of the generous 6-metre ground floor ceiling height. This intervention provides additional functional space, including staff facilities and a dedicated dark room exhibition area.

Mezzanine

Central staircase

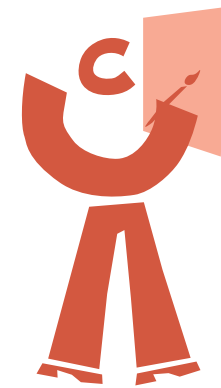
Mobile display walls offer artists the flexibility to curate and configure the space according to their vision, allowing the layout to evolve in response to each new body of work.



C&C COFFEE

Located at the rear of the exhibition space, the café bar offers a warm, inviting setting for visitors and artists. Serving locally sourced coffee and treats, it fills a gap in Buchanan Street's limited independent café scene and encourages greater public engagement with the exhibitions.

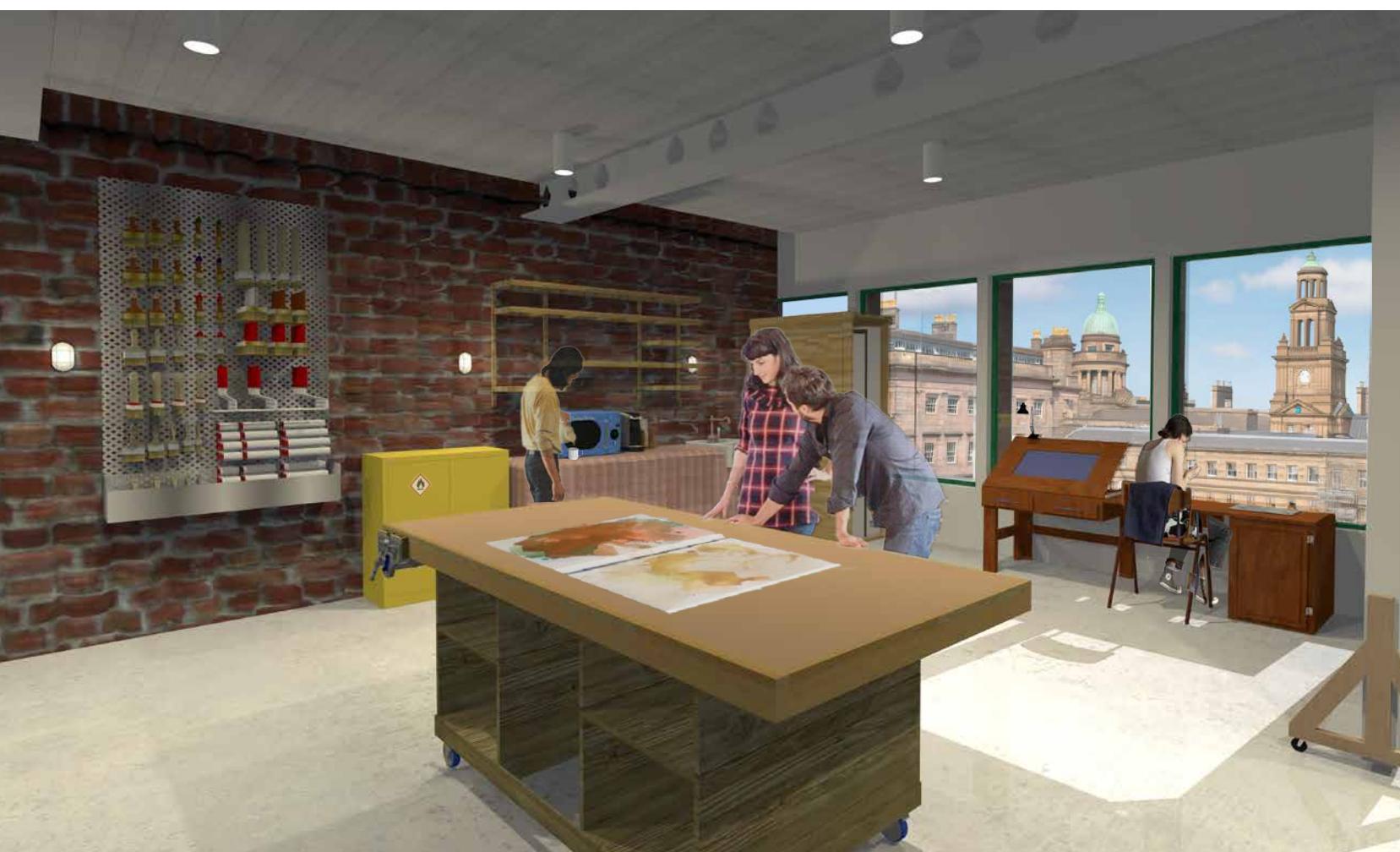




STUDIO SPACES

The studio space is designed as an open-plan, adaptable environment that responds to the evolving needs of its resident artists. A curated mix of reclaimed and mid-century furniture reflects the building's original period and character. Each floor accommodates two artists, with the exposed stairwell acting as a visual and spatial connector, encouraging dialogue and collaboration between studios.

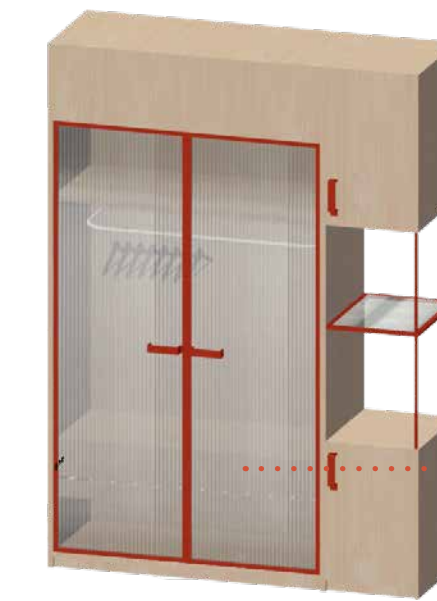
A third year fine art student, Tara Stephenson, was interviewed to inform the design of the studio spaces from an artists perspective. She emphasised the importance of having a dedicated personal area, including a desk, storage, and a wall surface for pinning work or drawing directly. Essential elements for supporting and visualising her creative process.



INTERIOR FINISHES



All the bedrooms follow a simple, cohesive palette designed to give artists the freedom to personalise their space. A sustainable 3.5mm linoleum flooring was chosen for its durability and acoustic performance, offering an 18dB reduction in impact sound. The exterior walls are finished with a textured plaster, adding a tactile, organic quality to the rooms. Accents of red and blue introduce a fresh, modern character while maintaining a calm and adaptable environment.



Bespoke Birch Wardrobe

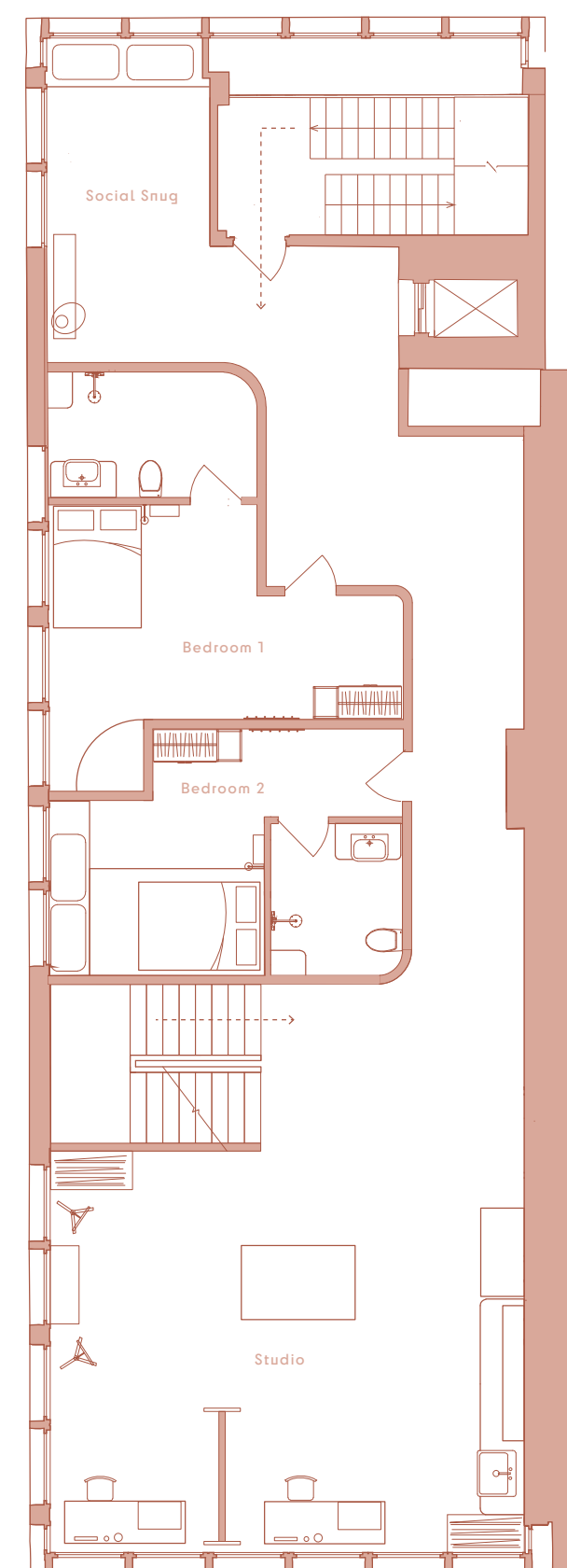
BEDROOM DESIGN DETAILS

Ribbed polycarbonate sheeting

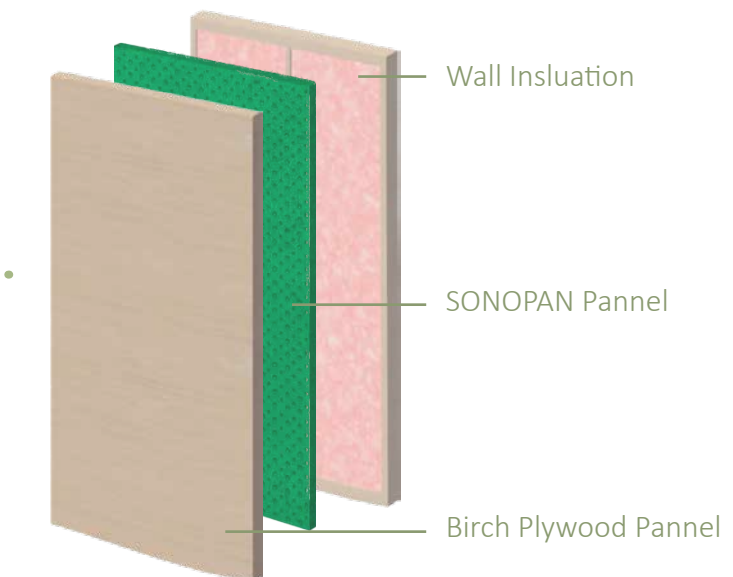
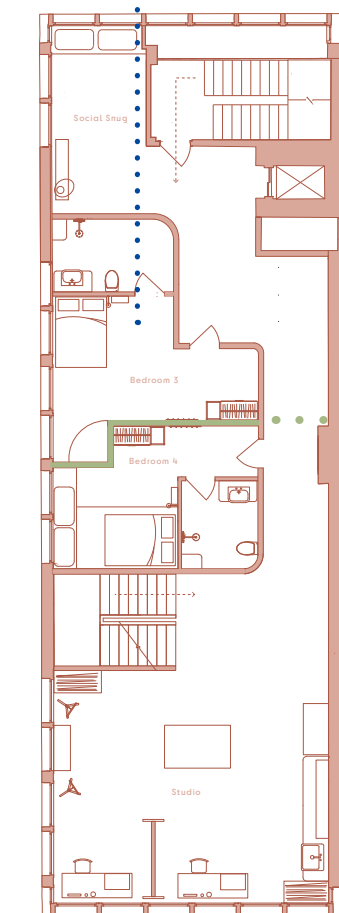


The larger bedroom on each floor is designed to be fully accessible, featuring generous floor space and thoughtfully selected, easy-access furniture. Each room includes an accessible en-suite wet room, promoting the residency as an inclusive, welcoming experience.

First Floor



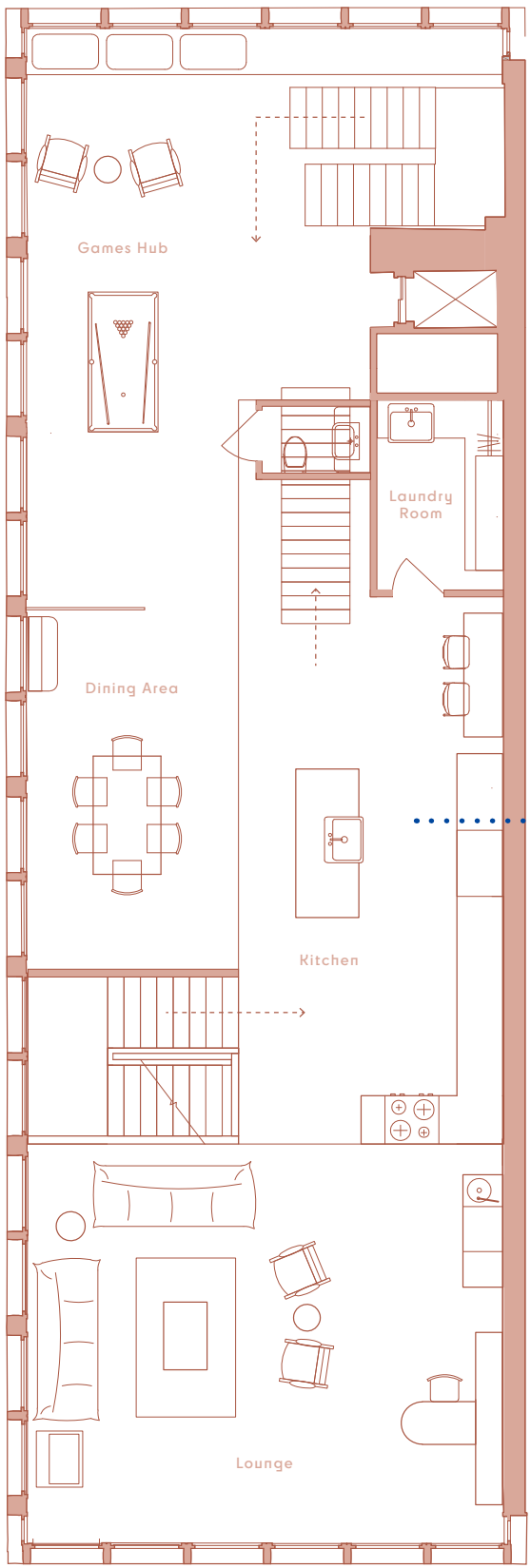
Second Floor



Given the site's location on the busy Buchanan Street, soundproofing was a key consideration to ensure a comfortable and focused environment for the artists. SONOPAN panels, made from 100% recycled wood, offer an STC rating of 27 to effectively reduce noise transmission. The windows were also replaced with soundproof double glazing.



Third Floor



The buildings overall design language is culminated in the communal space on the top floor. It brings together key material elements from around the building to create a cohesive and inviting environment. As the heart of the building, this space offers artists a place to relax, connect, and engage with both one another and their surroundings.

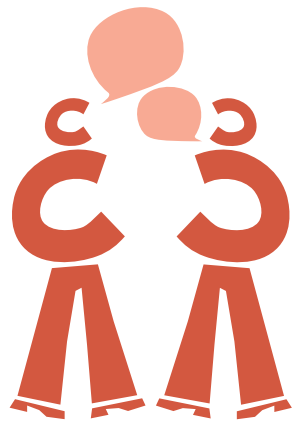


INTERIOR FINISHES

- Marmoleum
Walton Vinateg
Blue
- Natural Oak
Finish Kitchen
Unit
- Blue Finish
Concrete Counter
Top

BESPOKE FLOORING

Wood flooring was chosen for the communal hub to introduce a sense of warmth and comfort to the space. The bespoke birch parquet flooring, features a hexagonal motif inspired by the perforated brickwork by Summumstudio. The natural birch finish also highlights the vintage mid-century furniture pieces.



This top-floor living concept was intentionally designed to maximise natural light and make full use of the rooftop as a garden space. The result is a penthouse-style communal area with panoramic views of the city centre, offering a bright and uplifting environment for residents.



- 3
- 2
- 1
- G

