

## PROJECT OVERVIEW

I believe that ruins have the potential to become a historical frame for a contemporary space.

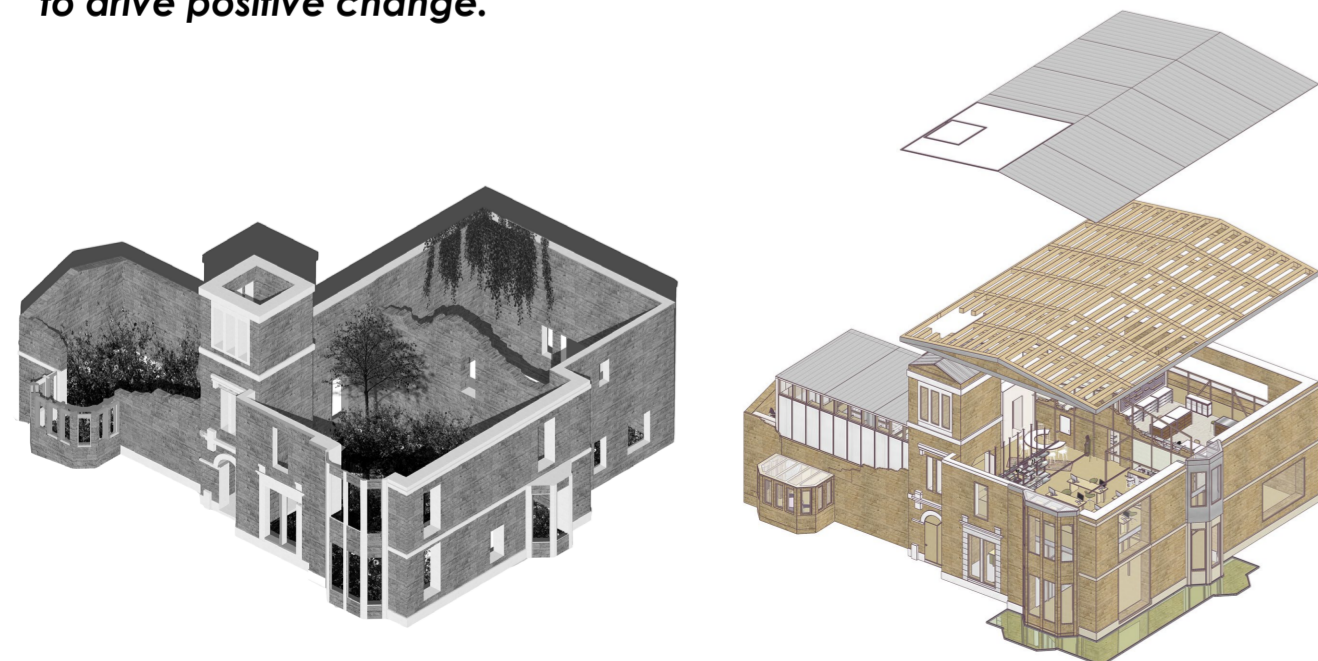
**Will sustainable innovation and design become the future of every design and architectural studio?** It's our responsibility to create sustainable and ethical designs. Design shouldn't be used to exploit the environment. **It should act upon identified opportunities to develop better and more sustainable ways of living.**

My proposal is the adaptive preservation of one of Glasgow's decaying ruins. The Acre Design Lab houses different types of skills and professions while mixing science and design skills to solve common problems in a creative and playful yet serious place.

The Acre Design Labs' focal points are urbanisation, climate change, resource scarcity, and innovation of sustainable materials and designs.

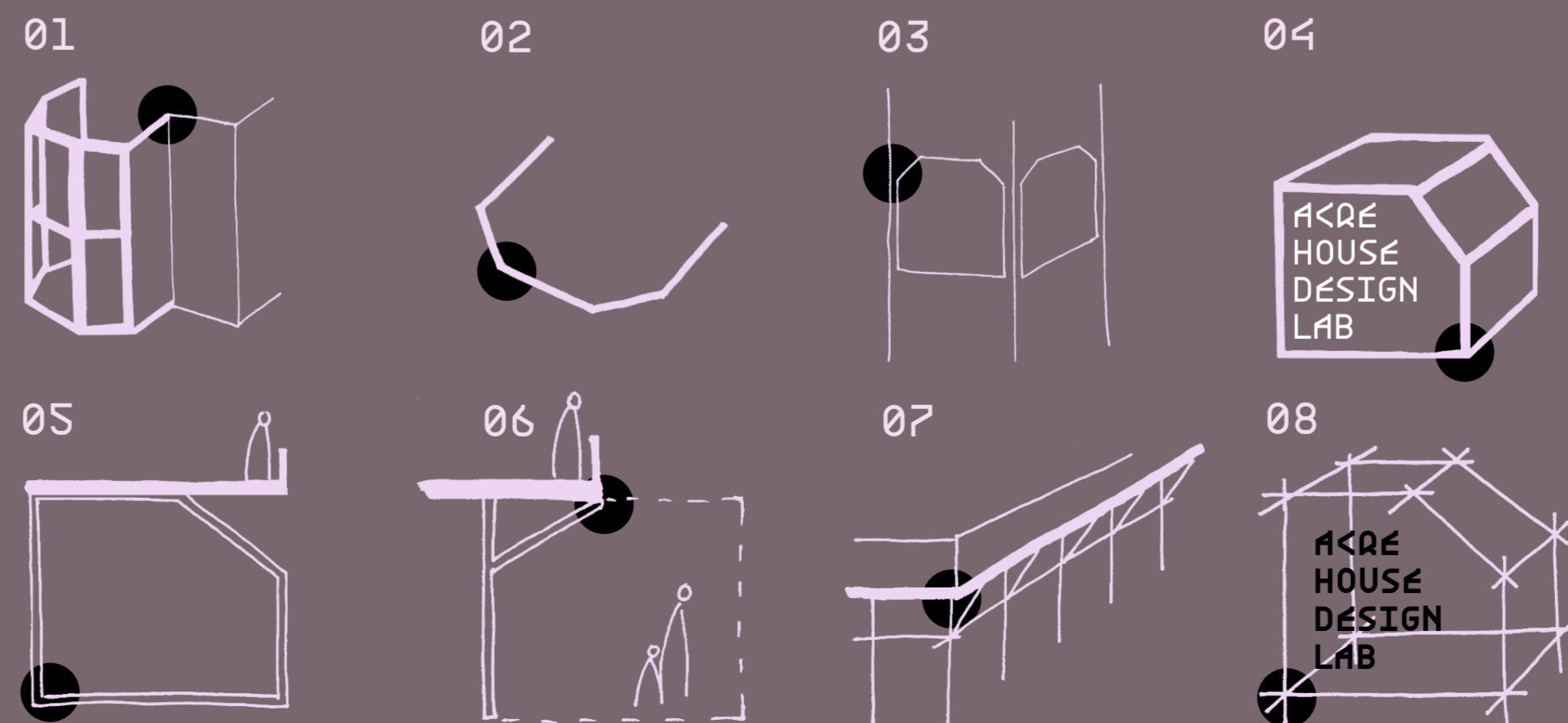
The Design Lab will use its vast land as a part of the research process for growing plants or accommodating insects and animals. It will offer space for exhibitions and community events. The interior will become a gallery of innovative sustainable materials and designs in use. It will include public spaces such as café, exhibition spaces and workshops for visitors to interact with the topic of sustainability and innovation. The first floor will be a private zone for employees' workspaces, offices and archives.

**The Acre House is the opposite of what it used to be. The empty, abandoned ruin is now revived in full of life and creative ideas that empower people to drive positive change.**



Model of the existing Acre House

Model of the Acre House proposal



The eight sketch diagrams demonstrate my process of creating unique design identity for The Design Lab. The elements also include the logo of the facility. Connecting branding with the facility design creates the whole identity of the Acre House.

01 I have translated the existing architectural feature of the window bays, played with the shape, and begun to develop new building elements like the 03 tower openings, 06 supporting structures, and lastly, the 08 Logo of the facility.



# WHERE? WHY?



"THE ACRE HOUSE IS LOCATED IN THE WEST OF SCOTLAND SCIENCE PARK."

Adaptive reuse of the Glasgow Acre House ruin becomes a Design Lab. It has excellent potential to become a space for innovative design within its ruin envelope. It is neighbouring with residential flats and houses, but the site is very intimate, due trees hiding it from the street.

It is substantial to mention that the Acre House stands near The West of Scotland Science Park. The park provides a location for a broad scope of facilities to gain support from - laboratories, environmental institutions, technology innovation companies and other research labs across the area.

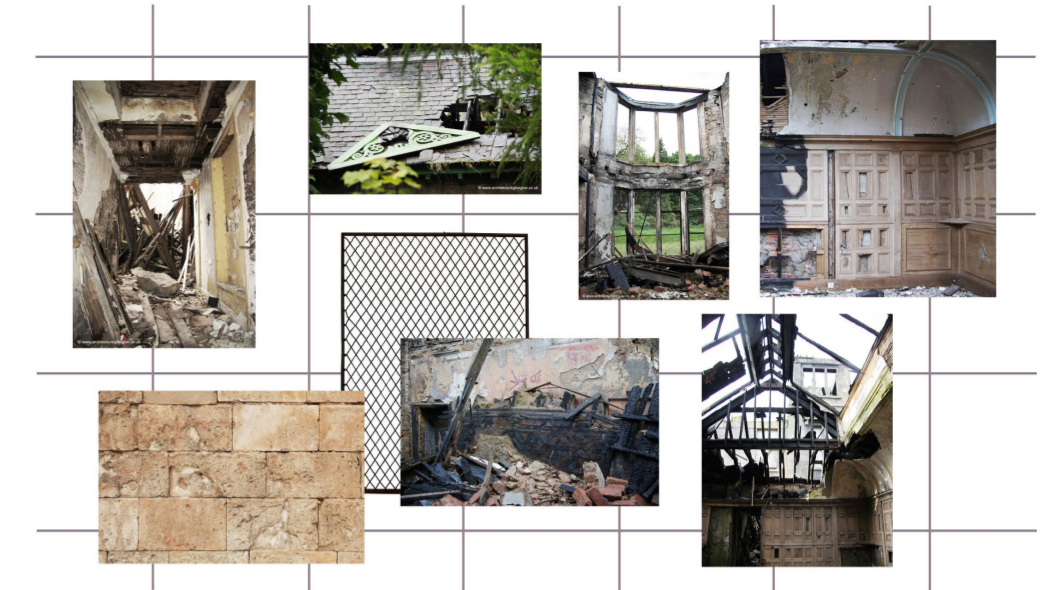


The Acre House is a **2-storey Italianate villa** with a 3-stage tower. It was built in about **1880** **no one seems to know who the house was built for and by whom.** It fell out of use in 2004. It is still lying empty, and damaged by sever fires.



- 1 Acre House
- 2 COHERENT- Innovation of technology, materials
- 3 Scottish Environment Protection Agency
- 4 Glasgow Golf Club
- 5 Acre Community Hall
- 6 Garden slots
- 7 University of Glasgow Observatory/ Weather Station
- 8 Hydrodynamic Laboratory
- 9 REPROCELL- BioTech
- 10 Drug Discovery- Research institution
- 11 Vet University
- 12 Beatson Institute for Cancer Research Laboratory

Existing materials and architectural features





# WHAT?

## WHAT IS RESEARCH AND DESIGN LAB?

The Design Research Lab is a laboratory for experimental design and research reflecting on digital society. The Design Research Lab investigates possible futures through playful interventions, critical making, and collaborative reasoning.

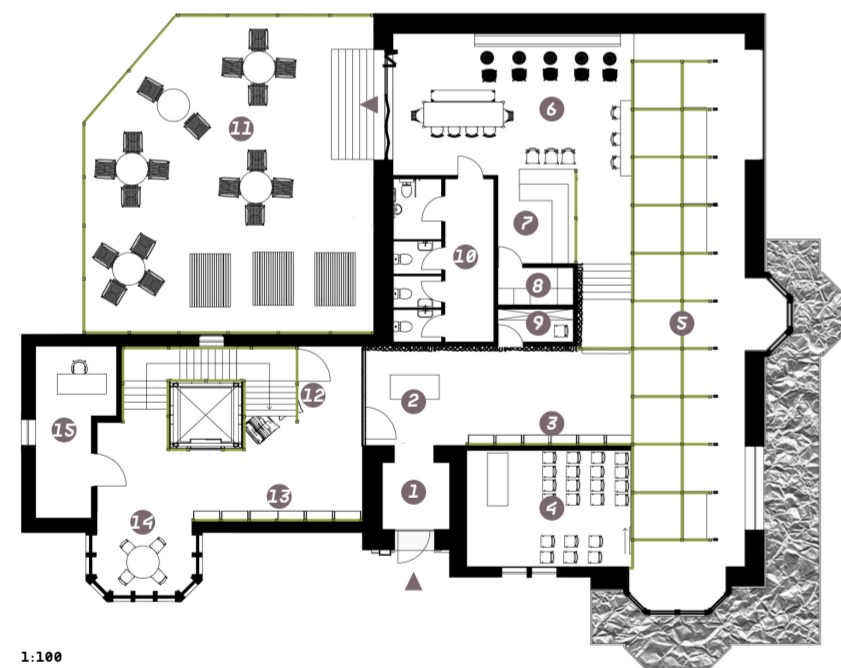
As a platform and network, they are deeply involved with the requirements and policies needed for society's inclusive and sustainable development from a design perspective. It needs an interdisciplinary team of designers, researchers, tech enthusiasts and critical thinkers.

## WHY ACRE HOUSE DESIGN LAB?

For the Acre House, I have decided to reuse the building and use it sustainably as a symbol of adaptive architecture. I want the Acre House to support all residents, employees and students. The Acre House is in the West of Scotland Science Park. Surrounded by these facilities can help the Design Research Lab grow and educate the current community.

On the other hand, it connects people across Glasgow (architects, designers, activists, students, families, researchers) interested in working toward a better future for our everyday lives.

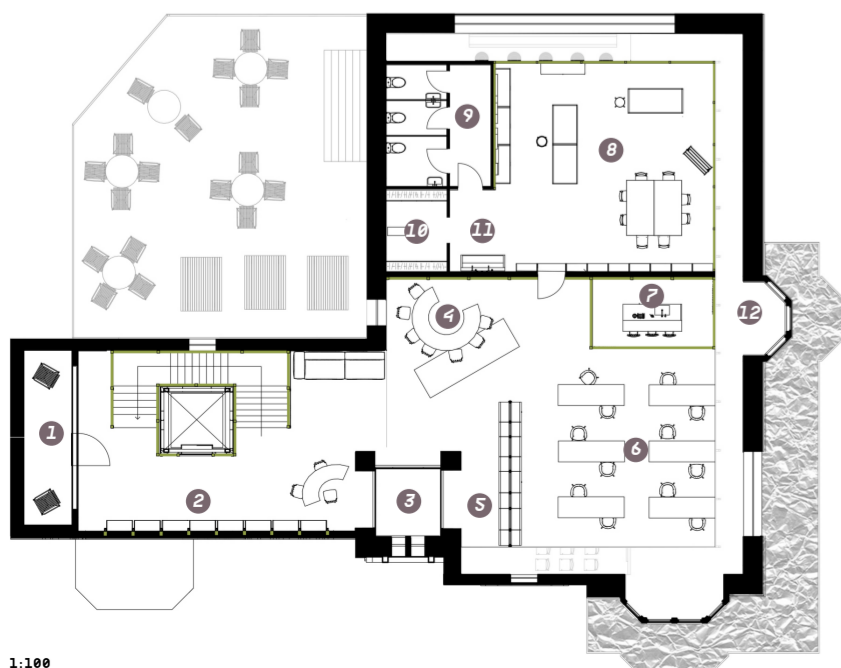
*Design Research Labs are researching new opportunities for a better everyday life and designing solutions for people and the planet. Innovate new materials, hold events to educate people, and promote progress.*



### GROUND FLOOR

#### LEGEND

1. Entrance (tower)
2. Information Desk
3. Product Display
4. Presentation / Workshop space
5. Exhibition Space
6. Café
7. Bar
8. Kitchen
9. Staff Room
10. Toilets
11. Garden Café
12. Storage Room under stairs
13. Material Library
14. Meeting space
15. Head office



### FIRST FLOOR

#### LEGEND

1. Balcony
2. Archive
3. Entrance Tower Void
4. Meeting table
5. Library
6. Workspace
7. Kitchenette
8. Lab Workshop
9. Toilets
10. Changing Room
11. Washing Space
12. Parameter void

Team of Acre House Design Lab to showcase the wide profession scope of the facility.



**AMAYA**  
Head of Design

Amaya is a creative professional and the manager of the design department. The visual and creative endeavours of a business. Her role is to build a cohesive vision for the entire research lab, whilst ensuring that the design team maintains and evolves this facility as the research progresses.



**HENRY**  
Head of Finance

Henry creates forecasting models, assessing risk in investments and ensuring all accounting activities comply with regulations.

He is in charge of funds available for this facility.



**LIAM**  
Engineer

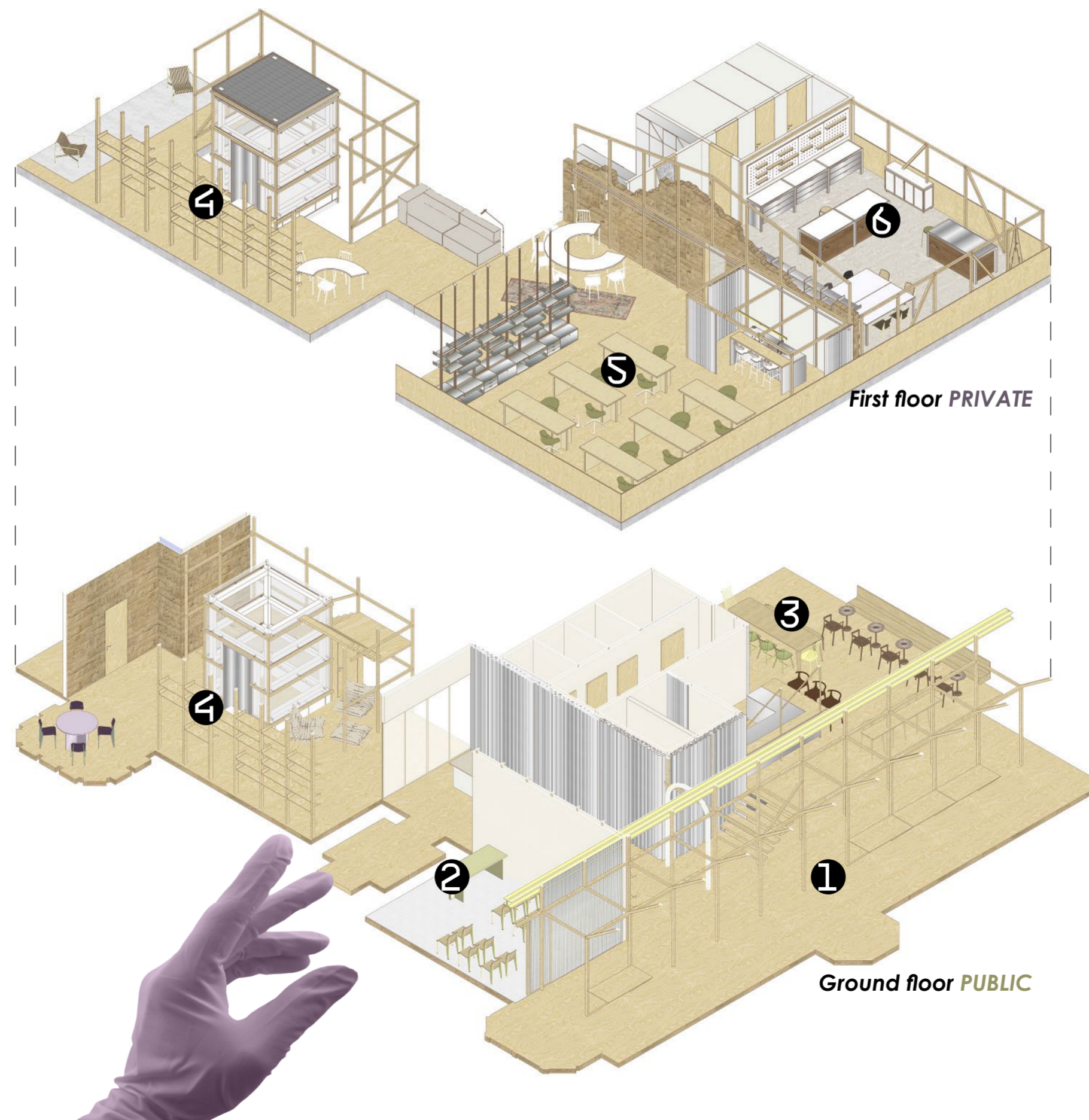
Liam is a professional who is involved in inventing, designing and maintaining a variety of machines, structures and data systems.

Liam is also responsible for specifications of budget and timeline of any projects. Liam is an experts in their fields, creating and innovating constantly.



**ALMA**  
Head of the Acre Research Lab

Alma is the head of Acre responsible for the effective delivery of facilities services for all building users including staff, visitors, clients and audience.



**01. Exhibition Space** / The exhibition space is for sharing ideas to receive feedback, enabling The Design Lab to adjust and improve design solutions. Collaboration makes it possible to quickly validate a design concept's feasibility and desirability to a broader audience.

**02. Workshop** / The workshop is a flexible space for educational, research and creative activities. Pop Ups, hackathons, exhibitions and panel discussions. They are inviting residents to work with the Design Lab as a community.

**03. Café** / The café supports the research and education part of this facility. Space where ideas mingle, swap and create new forms. Thinking isn't done by individuals; it is done by communities.

**04. Archives** / On the first floor, the archives work as a material library and store already-produced innovations. The ground floor archive is a shop where people can buy Lab-created Designs and, in this way, fund Acre Design Lab.

**05. Office** / The office is a private part of the building for employees to work, connected to the Lab workshop—an environment where people and ideas can meet.

**06. Lab** / The Lab workshop is where experts and creatives from multiple fields collaborate. Use special equipment and test and prototype any design processes.



# CONCEPT

I am saving the Acre House and repairing it therefore; the scaffolding uncovers the story of the building coming together with the building construction materials that are used in its interior.

The scaffolding inspiration is translated into the interior design of Acre House as wooden construction that creates structure together with fabric to support the first floor and creates a flexible space for the exhibition space located below the first floor and highlights the building's void.

The wooden construction creates a skeleton for the lift and exterior courtyard spaces.

**"THE BEST WAY TO PREDICT THE FUTURE IS TO DESIGN IT."**

- BUCKMINSTER FULLER

**01.** The Lab / workshop's main feature is the existing ruin fracture supported by a wooden scaffolding structure and a grid of shelves from the other side. It creates tension between new and old and divides workspaces but, on the other hand, leaves the free flow of employees on the first floor.



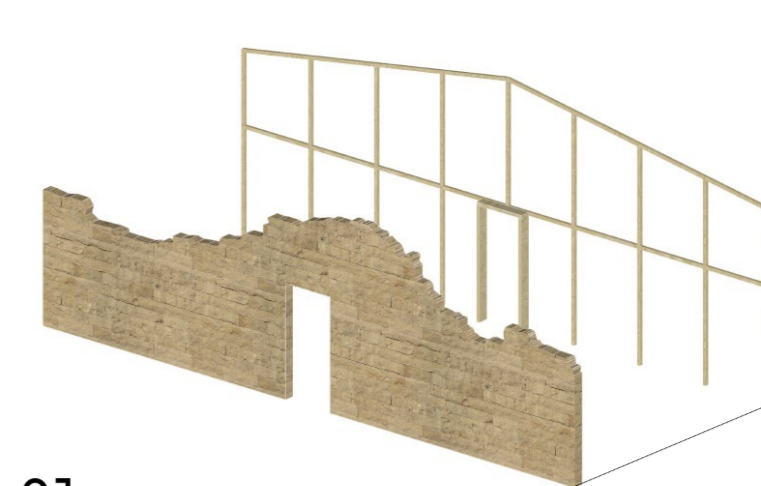
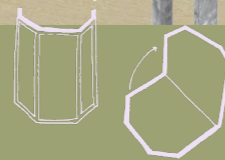
**02.** The office is a flexible space with a kitchenette, meeting table and library. It is offering employees to change their layout freely. The kitchenette can be closed off with silver curtains if needed. The office space gives the impression of a floating floor inserted into the ruined structure, which offers the ability to peak in different spaces like the tower, exhibition space and workshop.



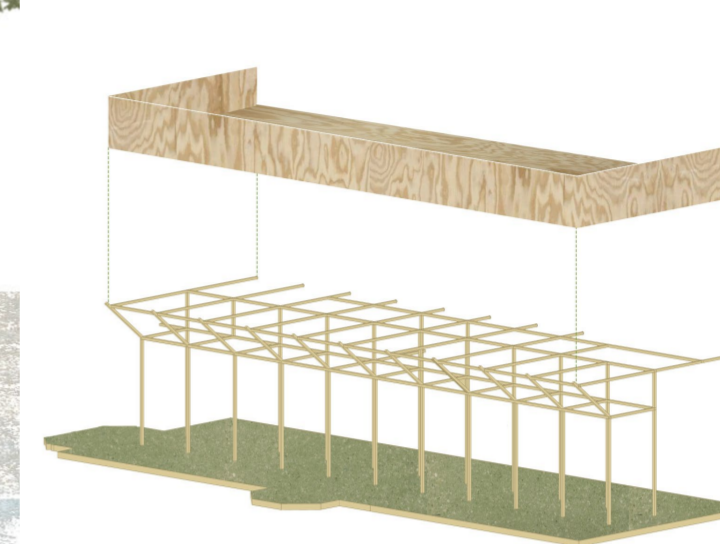
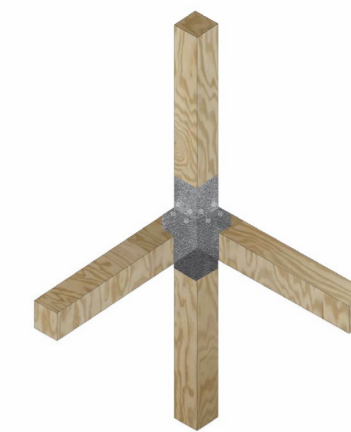
**03.** The office archive is only available to employees and serves as storage. The archive faces the lift and stairs. The storage system is also wooden structures that can be adjusted to any storage box size or placement. The archives are located on the left wing of the building, which is a private section of the Design Lab.



The shape of the tower openings was inspired by the building's window bays, a dominant architectural feature. I have translated this shape into detail of my design.



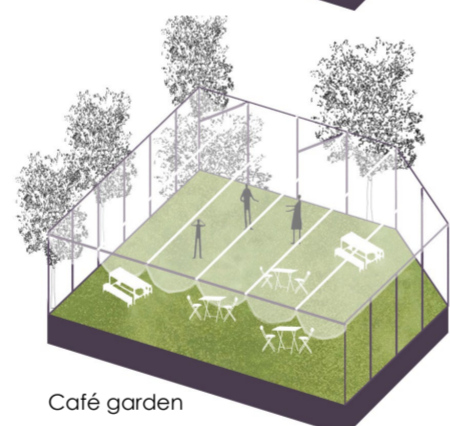
**01** Existing wall supported by the wooden structure



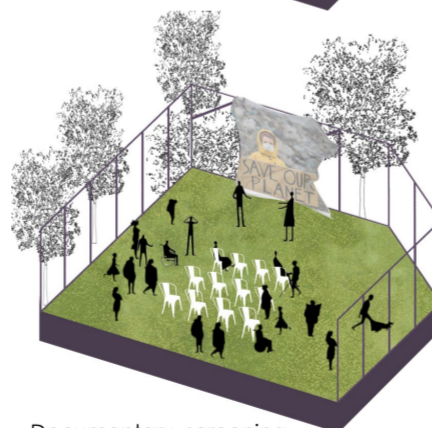
**02** Support of the First Floor



Gardening course



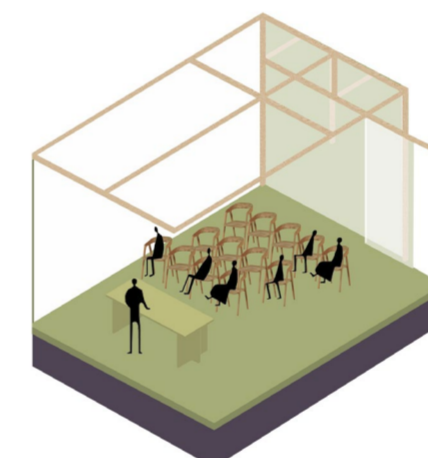
Café garden



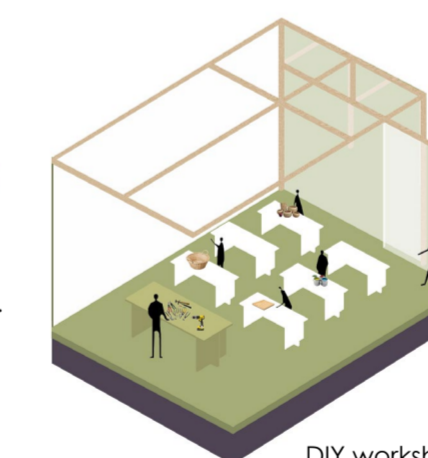
Documentary screening

**The exhibition space** is a zone for indoor events.

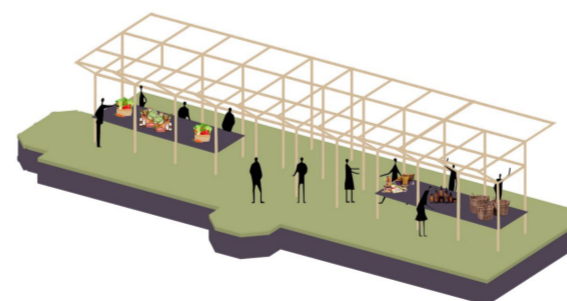
- Exhibitions of Design Lab work or work from courses.
- Party events of final projects.
- Pop ups of markets, handmade products, and community activities.
- Feedback from community activities on ongoing projects and research.
- Local food markets or other products made by local companies.



Presentation for visitors.



DIY workshop.

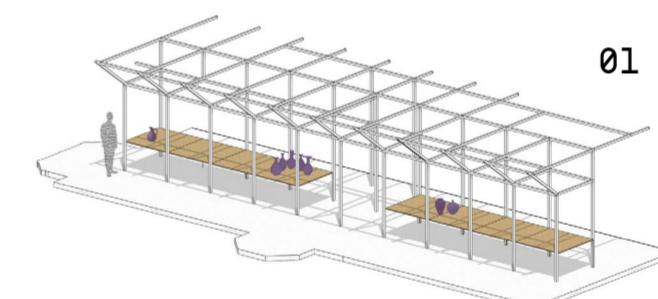


Local food markets and hand made products in the exhibition space.

The workshop space operates as an **educational part** of the Acre Design Lab to invite people to **learn skills that support a sustainable way of living** or become a part of the research progress and work with the Design Lab team as a community.

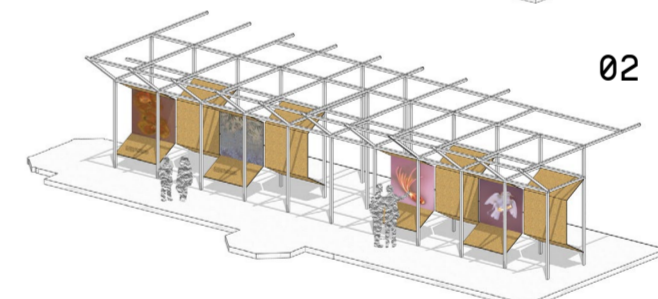
- DIY courses
- Presentations
- Workshop space

- Café
- Movie screenings
- Presentations
- Gardening courses
- Events



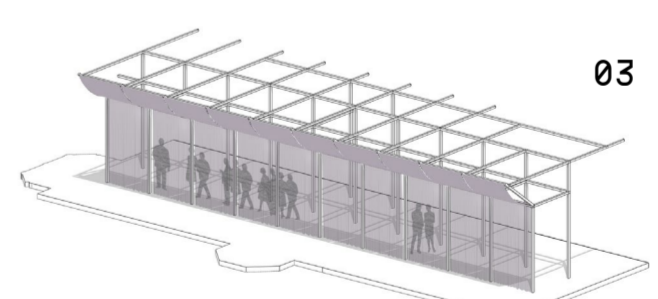
**01**

The wooden scaffolding works as a flexible structure with the possibility to adjust exhibition space to many types and needs for display or events.



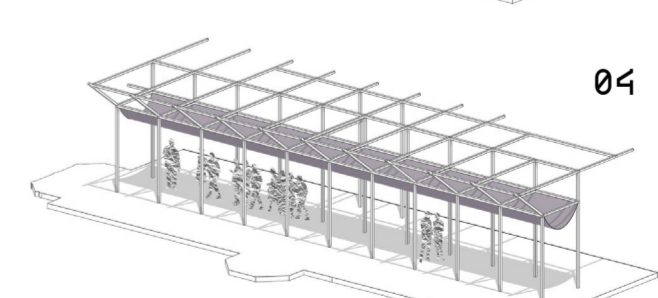
**02**

The diagrams demonstrate design possibilities for presenting displayed work and the structures' flexibility.



**03**

The use of fabric divides spaces. The idea is derived from scaffolding and buildings during construction. The **03** and **04** fabric material operates as a divider or a surface for pinning up work.



**04**

It can also be used as a tool to hide the exhibition space if it's being prepared.

The contrast between the robust skeleton and soft fabric repeats itself around the building and becomes a feature of the Acre Design Lab.



# HOW ?

The Acre facility will become a space where we can bring together experts and creatives from multiple fields-collaboration networks and provide conditions that support creative collisions. Repurposing the Acre House will evidence a sustainable future and, in addition, keep the facilities' ideology.

Thinking isn't done by individuals; it is done by communities. The Design Lab innovates and promotes its progress through pop-ups, hackathons, exhibitions and panel discussions. It will invite people to work with them on projects and research developments. These topics can also be educative among all age groups, from children aged 6 to seniors.



The void leaves the building open, and the new insertion feels minimal. The first floor almost floats in the building, unlocking the ability to spy in different spaces. People can still enjoy the building to its roof and see the interior materials integrate. This collage points out the primary materials: blond stone, birch plywood and fabric, creating the atmosphere and identity of the building.

The three diagrams show how the curtains on the wooden "scaffolding" operate during the facility's opening hours.

The curtains are used as the inspiration from scaffolding structures and divide spaces and reduce noise during busy hours.

At 8 AM, the employees come to the Office and Lab, and the Café is preparing to open at 9 AM with the exhibition space.

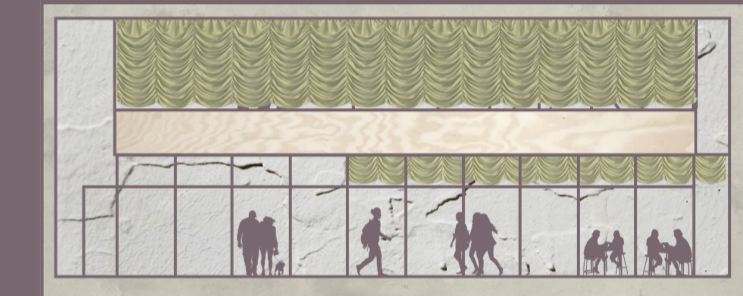
At 12 PM, the building buzzes with people coming to the café, exhibition space and small shop. Therefore, the Office and Lab pull down their curtains to reduce noise.

At 6 PM, the Café is closed, but the exhibition space is still open until 8 PM. Thus, the curtains almost hide the area, preventing the first floor from looking lifeless in the evening. The office can pull up its curtains again.

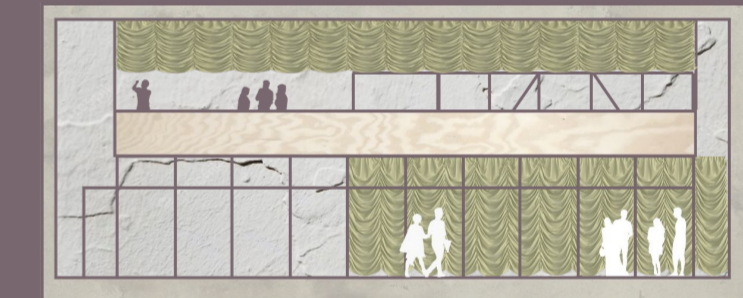
8 AM



12 PM



8 PM

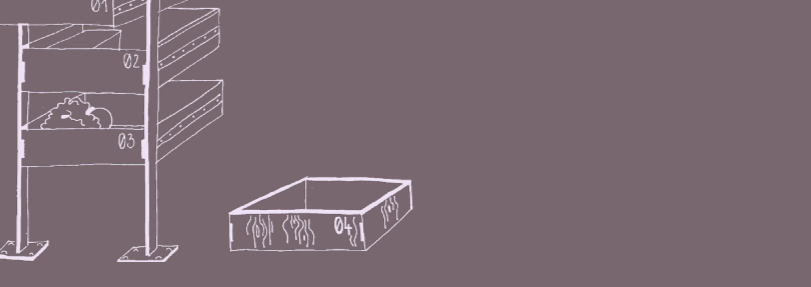
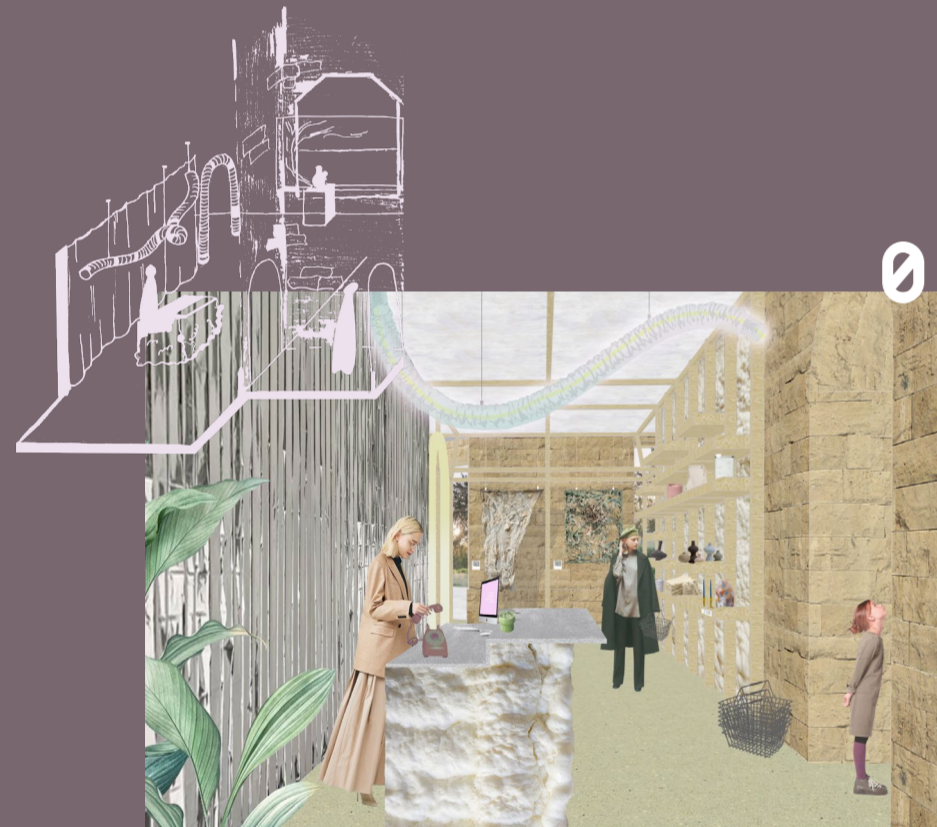


**01.** The tower is the main entrance to the building, where people see and enjoy the full height of it. It is almost a time portal through the existing ruin into the new design and use of the building. Walking further into the building, they are welcomed with unusual, futuristic materials and continue to uncover them throughout the interior.

**02.** The Exhibition space is an essential part of the facilities cycle. It spreads over the wing of the building with a view of the garden. It is connected with the greenery and pond reflection returning to the building, creating a very organic atmosphere. The space itself works as a tool for connecting people with ongoing dilemmas of our living, but on the other hand, promotes positive progress in innovation and more sustainable options. The space educates and involves communities in their research projects as a useful tool for better and faster results. The exhibition space is also for communities or visitors to create markets to sell local or handmade products.

**03.** The Design Lab Café is a place where people socialise, exchange ideas, try new things, and come into contact with new knowledge. People come into contact with unusual materials, just like the unique facility at Acre House. Materials like aluminium insulation or spray foam insulation are usually hidden under plaster. The building is infused with futuristic materials, but on the other hand, construction materials that give a feeling of an unfinished project. There is always space for progress, just like in the future of sustainable living and design.

**04.** The Design Lab archives stretch from the ground to the first floor. They are an essential storage system to archive already made prototypes in the Acre Lab. They are also used as a material archive or any tool archive. The ground floor archive can be accessed by public or collaboration visitors under staff supervision. Employees of the Acre Design Lab only use the first-floor archive.



I aim to use materials usually hidden behind plaster (insulation materials) that people don't come into contact with. As a metaphor for the hidden gem (Acre House). Unusual materials for an unusual building. I want people to come into contact with adaptive architecture, new facilities like the Design Lab, new materials and ways of sustainable and better living; new options and unique perspectives on our future. I would use the foam insulation to play with shapes around the café bar counter where the foam would be sprayed. The aluminium insulation would work as a reflecting material around bar and kitchen areas or where needed.



## MATERIALS

- 01. Austrian curtain drapery
- 02. Silver curtains
- 03. Blond sandstone
- 04. Pine plywood
- 05. Melted plastic
- 06. Aluminum insulation
- 07. Square tiles
- 08. Sprayed foam insulation (coated by secondary thermal barrier option to protect spray foam. E.g. DC315, Monokote-z3306, ADFire 7TB.
- 09. Sea shell terrazzo
- 10. Clear ducting pipe
- 11. Mycelium pendants