

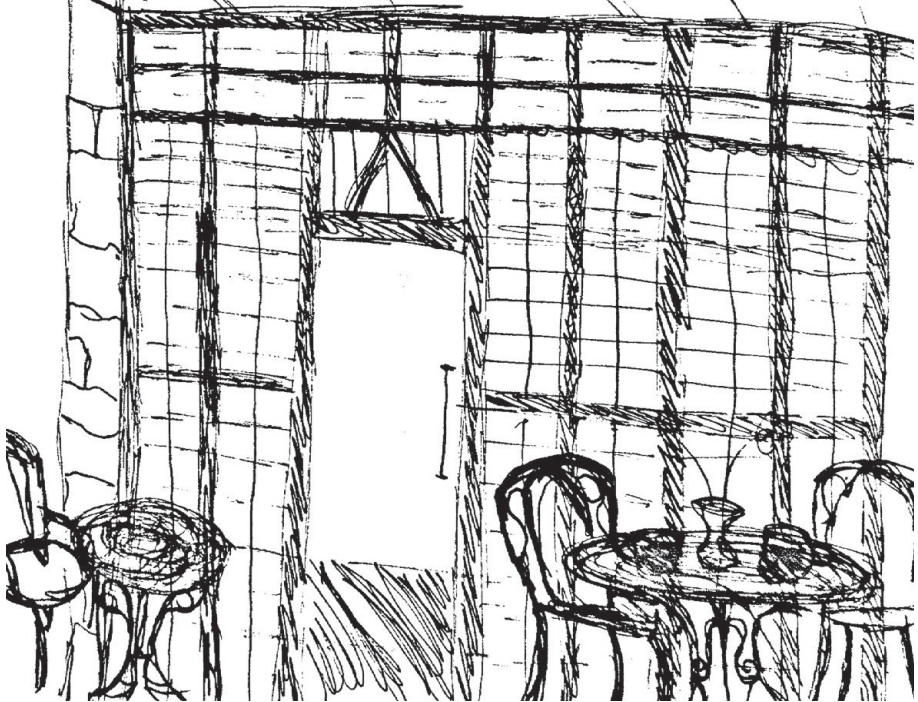
THE COOKING COLLECTIVE

The Cooking Collective is a community-driven initiative located in Glasgow’s historic Linen Bank within the growing Lauriston neighbourhood. Its mission is to celebrate the city’s rich cultural diversity and foster cross-cultural understanding through food education. By harnessing the power of food, the project contributes to the area’s growth and vibrancy, offering both everyday activities and opportunities to engage with underrepresented cultural narratives through shared culinary experiences.

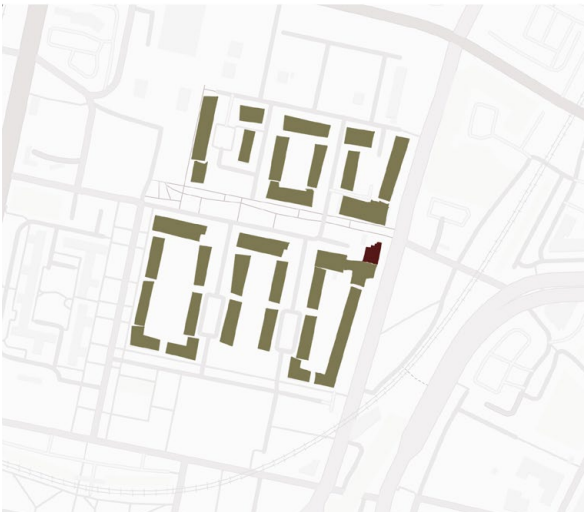
At the heart of the project is a commitment to community development, realised through three interconnected spaces: a café appealing to new visitors to the Gorbals, a community run shop enabling residents to sell their products, and a monthly rotating workshop series featuring home chefs from diverse backgrounds who share their culinary traditions and stories. These spaces support education, enterprise, and cultural exchange, encouraging meaningful interaction. The Cooking Collective reimagines this historic building as a platform for cultural dialogue, inclusive practice, and community-led futures.



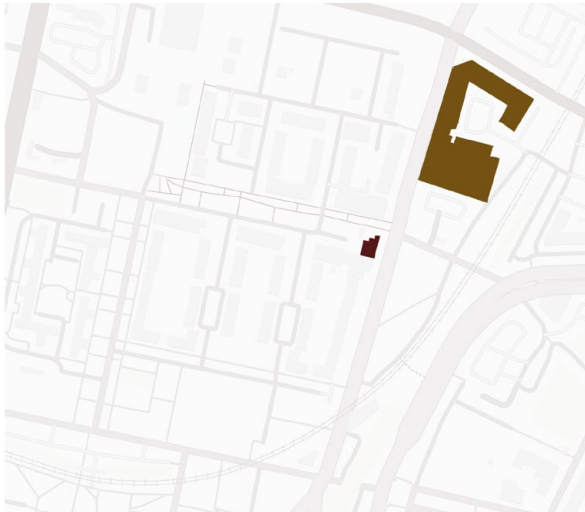
CONCEPTUAL IMAGE OF FACADE INCLUDING ORIGINAL 1901 FONT



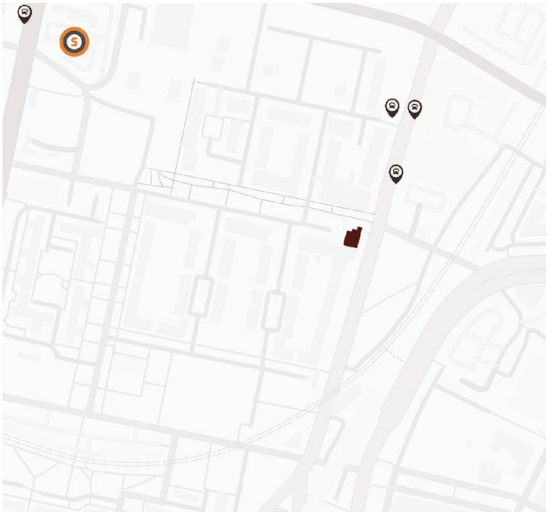
CONCEPTUAL SKETCH FROM SITE VISIT



RESIDENTIAL BUILDINGS SITE ANALYSIS



COMMERCIAL BUILDINGS SITE ANALYSIS



TRANSPORT SITE ANALYSIS



CURRENT PHOTOS OF SITE

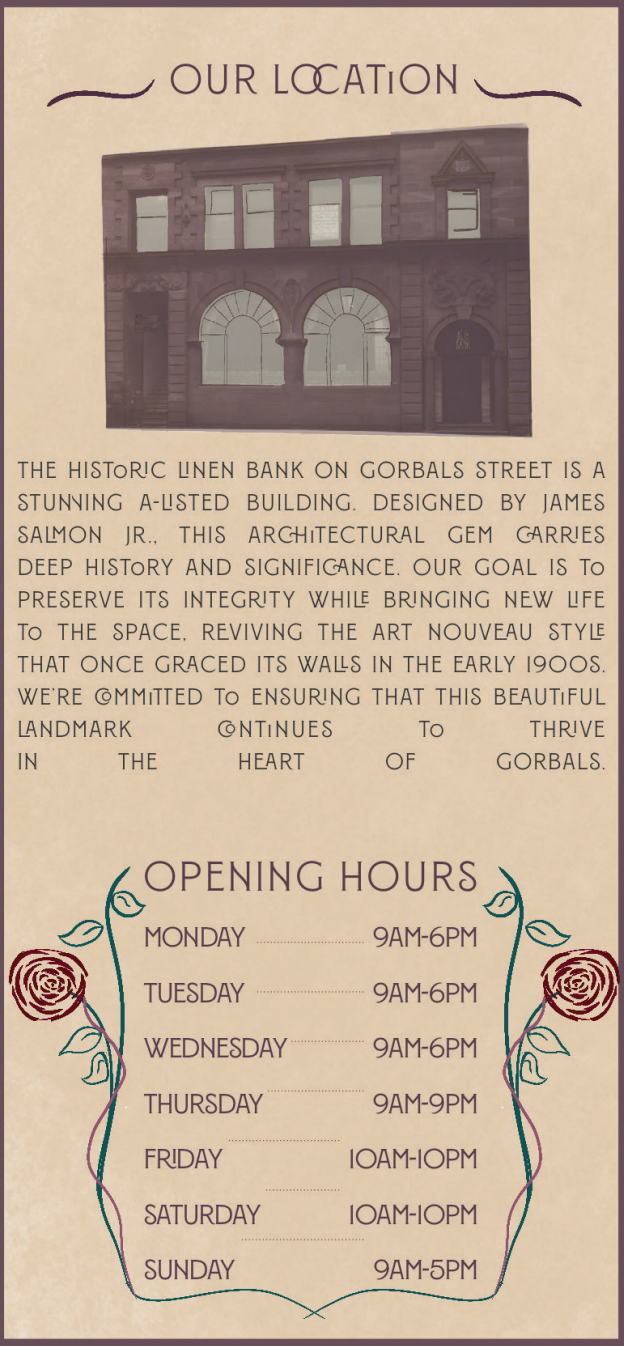
SIGNAGE FROM 1901



DEVELOPED LOGO



MARKETING BROSHURE





VISUAL OF ARCHED WALKWAY FROM CAFE TO SHOP



VISUAL OF WORKSHOP LIGHTING

BUILDING HISTORY



HISTORICAL IMAGES FROM 1901



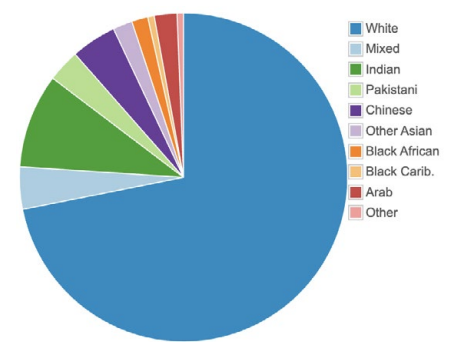
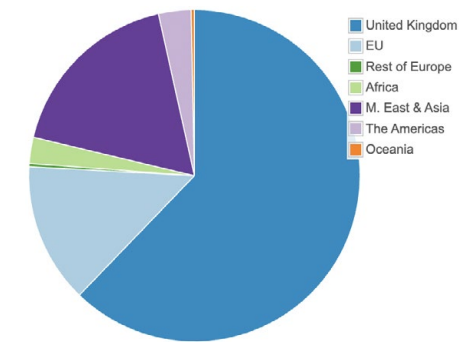
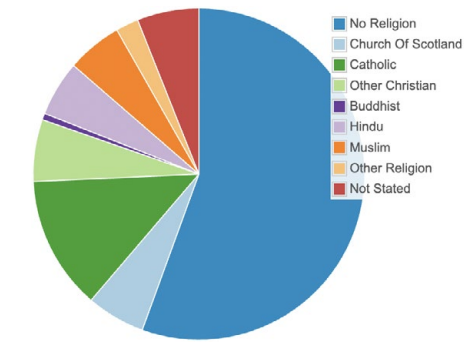
UNCHANGED FEATURES OF THE BUILDING



VISUAL OF COLUMNS IN THE CAFE

Designed by James Salmon Jr., a contemporary of Charles Rennie Mackintosh, the building showcases elegant Art Nouveau detailing and stands as a notable example of early Art Nouveau architecture in Glasgow. Once a commercial space and more recently converted for residential use, its rich architectural history has laid the foundation for a concept centred around community, culture, and exchange. The building's expressive design provides more than just a backdrop; it serves as an active element in shaping a space where the past and the present can coexist. This subtle transformation, from a symbol of economic authority to a place of shared experience, demonstrates how design can foster new ways of gathering, learning, and connecting across cultures.

LOCATION IMPORTANCE

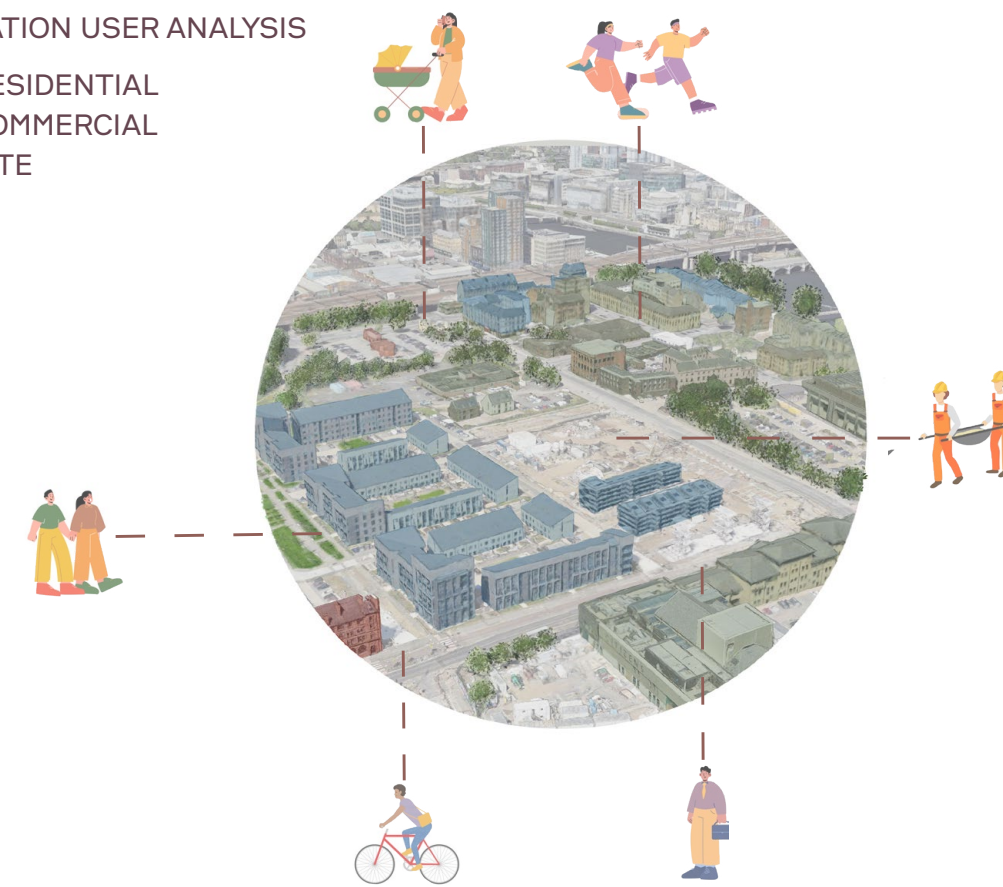


LOCATION STATISTICS

Lauriston is a culturally rich and diverse neighbourhood in Glasgow, home to both long-standing residents and newer communities. Its layered history and ongoing regeneration contribute to its distinctive character within the city. This intersection of tradition and transformation aligns with the conceptual vision for the Linen Bank, an inclusive and evolving space that reflects the dynamic identity of its surrounding context. Within the framework of the Cooking Collective, these multicultural elements have the potential to create employment opportunities for the local community while also serving as a space that fosters connection and cultural exchange among immigrants and residents alike.

LOCATION USER ANALYSIS

- RESIDENTIAL
- COMMERCIAL
- SITE



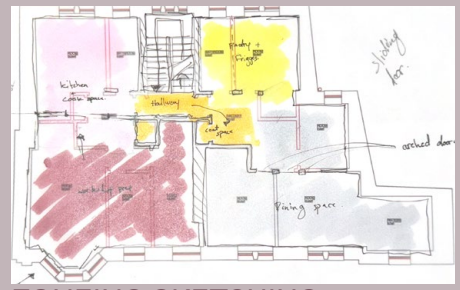
RESEARCH

Refettorio Felix exemplifies how inclusive design and adaptive reuse can transform underused spaces into welcoming, multifunctional environments

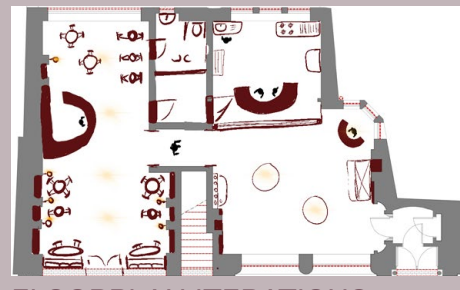
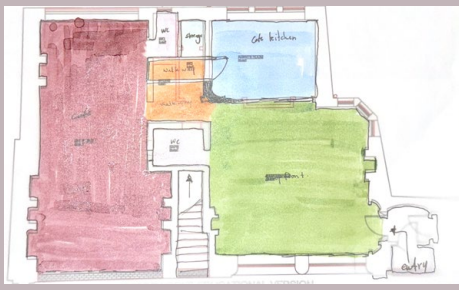
Soul Food Sisters uses food to empower migrant women and build community through cultural exchange and skill-sharing.

Bar Nouveau in Paris influenced my approach through its balance of flowing architectural lines, curved forms, and soft, modern lighting. merging historical reference with contemporary design.

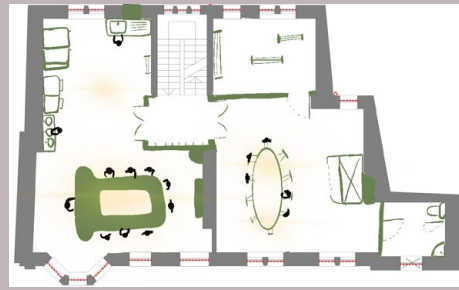




ZONEING SKETCHING



FLOORPLAN ITERATIONS



The development process involved zoning plans and iterations focused on the building's angled walls and prominent features. Careful coordination ensured furniture fit seamlessly while preserving the building's integrity.

The zoning process carefully responded to the building's existing features, using the central staircase to naturally divide the ground floor into distinct café and shop areas. Original windows were preserved for their character and inspirational value

DEVELOPMENT

COLUMN BAR TABLE



CAFE TILL



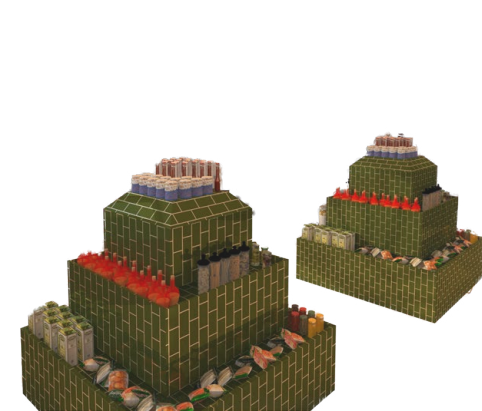
WINDOW BENCH



SPICE DISPENSER



SHOP DISPLAY



KITCHEN SHELF



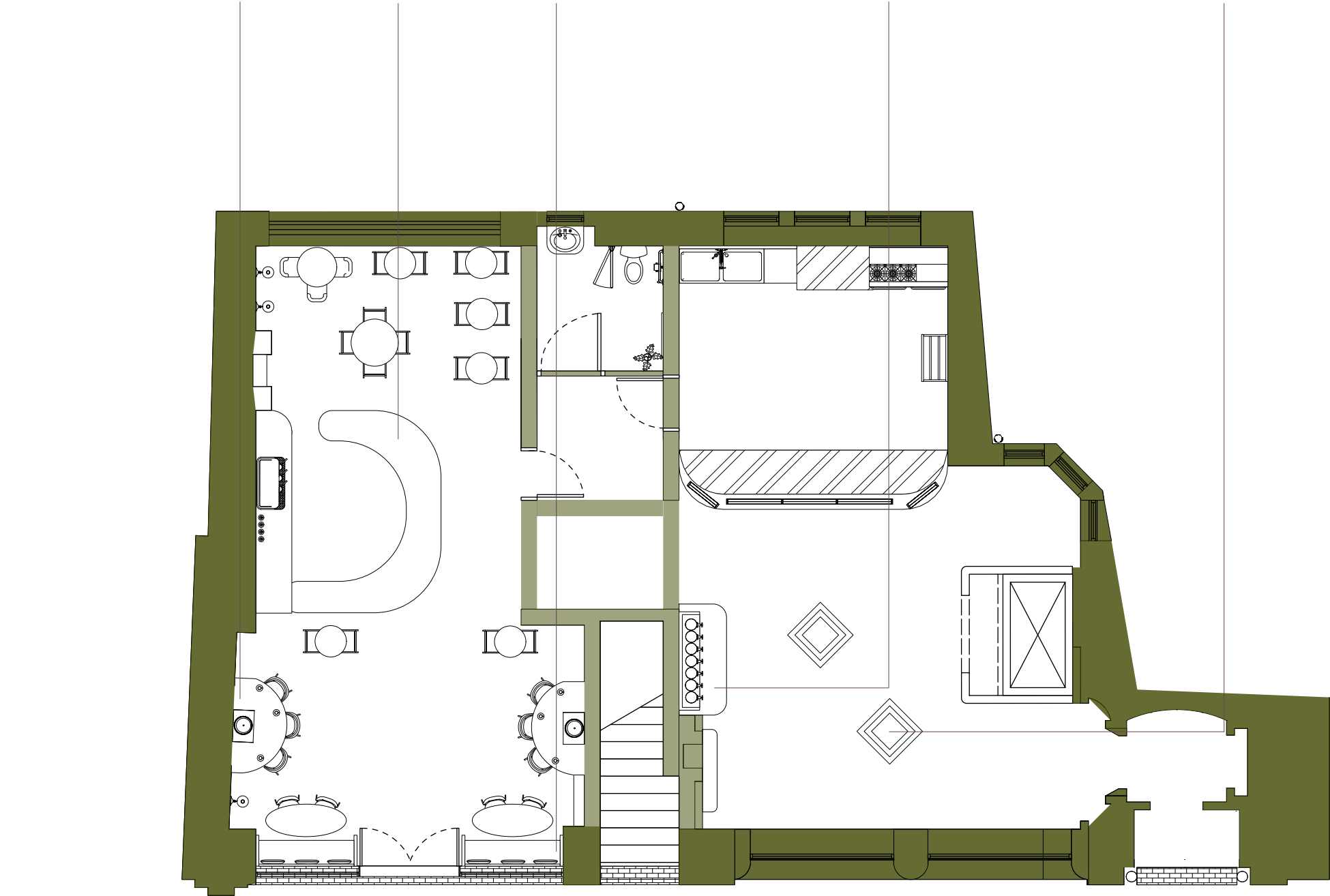
EQUIPMENT ENCASMENTS



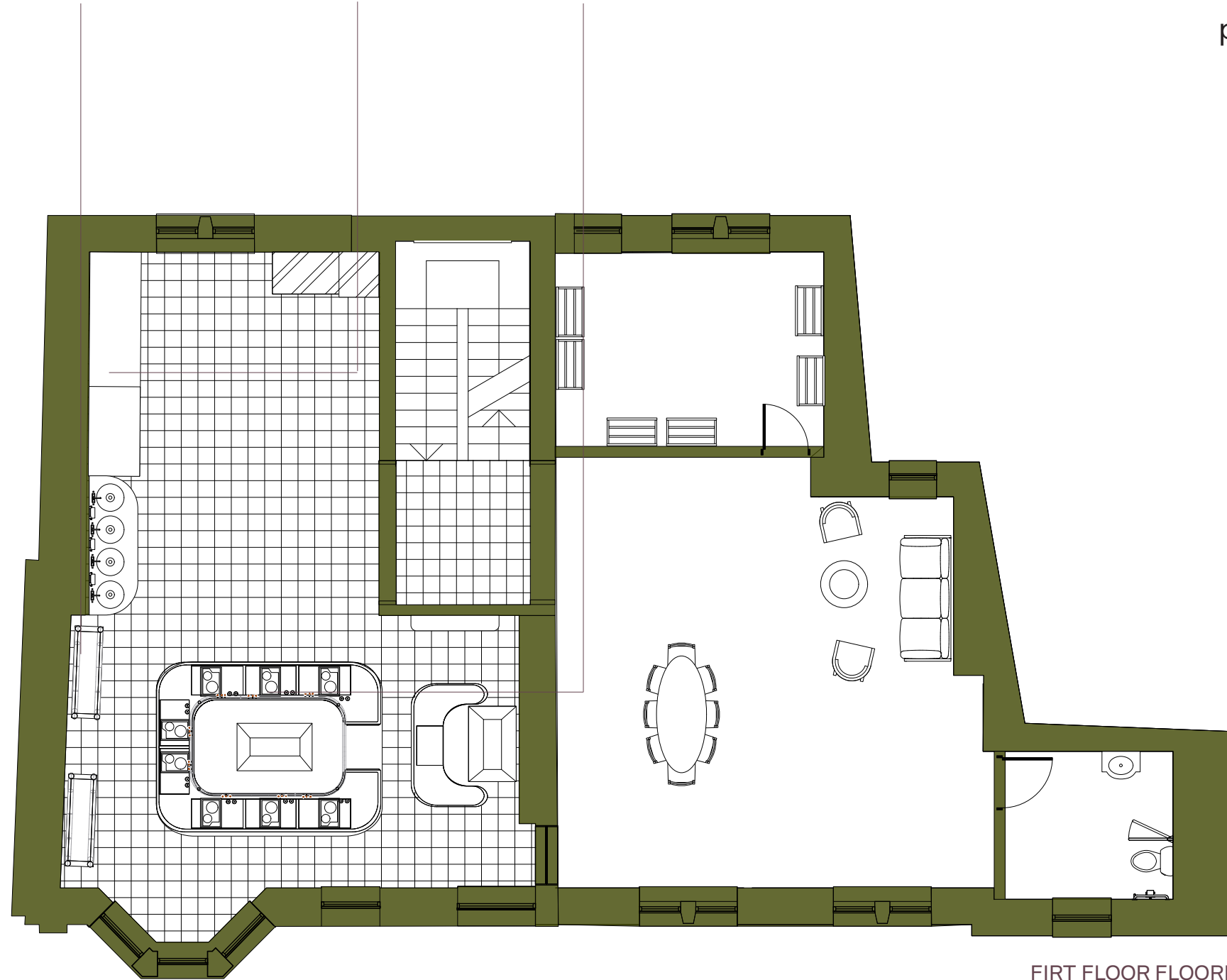
KITCHEN STATION



Bespoke furniture was carefully designed to preserve the building's listed features while adding contemporary function, demonstrating a sensitive and innovative approach to adaptive reuse and heritage preservation.



GROUND FLOOR FLOORPLAN SCALE 1:100



FIRST FLOOR FLOORPLAN SCALE 1:100



CAFE FINAL DESIGN



The contrasting material choices of the café and the shop respond to the distinct functions within the spaces, creating clear yet connected zones that respect the building's character. By balancing the warmth of the café and the modernity of the shop through design elements, this approach enhances the user experience.

SHOP FINAL DESIGN



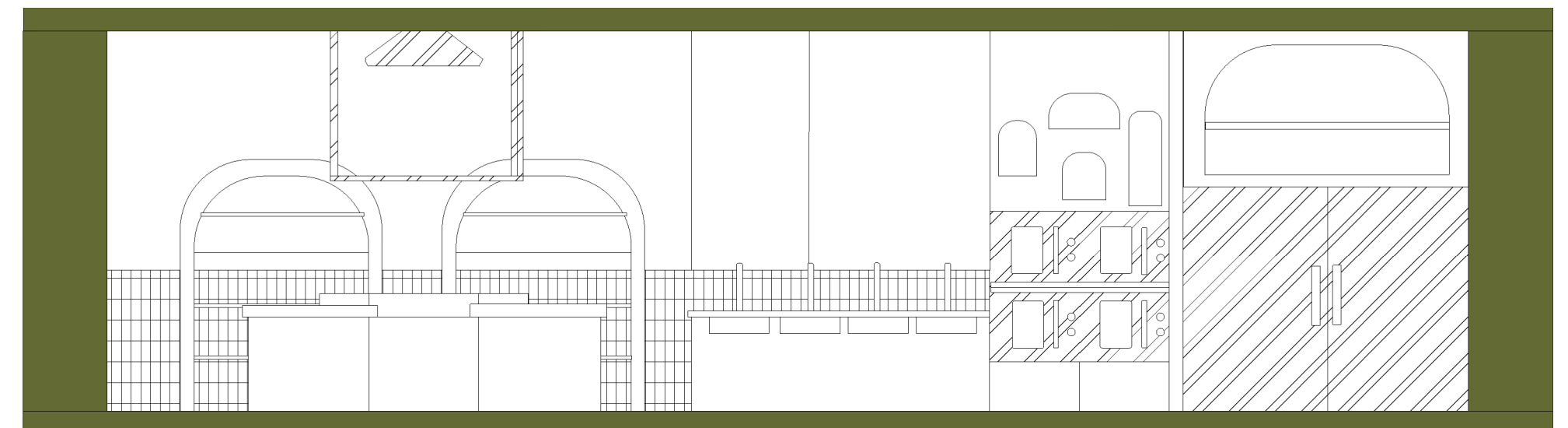


WORKSHOP FINAL DESIGN



The workshop was designed to foster social interaction and shared learning, with a rounded central station that encourages participants to connect, exchange, and engage. While hygiene and functionality were central to the design, soft curves and flowing lines subtly reference the building's historic character, maintaining a minimal yet expressive aesthetic.

This approach reflects a considered response to evolving community needs within a heritage setting, demonstrating how thoughtful spatial planning and material expression can create inclusive, purpose-driven environments. Through adaptive reuse, the workshop space honours the building's past while supporting its transformation into a place of contemporary relevance and communal value.



FIRST FLOOR SECTION SCALE 1:50

