

third floor:  
quiet / private zone



second floor:  
makers space



first floor-  
social study area



steel framework



ground floor:  
-exhibition  
-cafe  
-check in

morph house

Morph House is a free creative study space located in the B.O.A.C building on Buchanan street. we are open 24hours and operate over 4 distinct floors. The facilities at Morph House have been constructed to fit the needs of our users, with amenities such as an exhibition space, crafts/makers floor, quiet zones, social study zones, a cafe, a self service kitchen and so on! Our typical users tend to be students, remote workers and creatives, but we encourage all to come and use our space. We've made it easy, simply register at the check-in desk and you're all set to explore!

Main inspirations for the interior have been derived from postmodern airports, as we wanted to honour the B.O.A.C buildings former use being the British Overseas Airway Corporations Glasgow office (1970). We created this space as we believe that Glasgow is severely lacking in free study spots leading students/remote workers to use cafes which is causing strain on local businesses who don't have the capacity for laptop users. Morph House is a place for studying, socialising, connecting and igniting your creative fire without the stress of having to buy a coffee every hour, but also a place to relax and recharge.

We strategically chose a site in the midst of consumerist retail stores as we wanted to bring a juxtaposing atmosphere to Buchanan Street. As a society, we must nurture the creative minds of our future and unfortunately consumerism and capitalism neglects this notion. Through providing Buchanan Street with a new and exciting creative space, we will hopefully ignite a positive change in future city planning.



morph into the person you want to become,  
or don't



# SELF-WRITTEN BRIEF

To design a free, 24 hour creative space for the people of Glasgow, with a specific emphasis on catering to students, remote workers, and creatives. This space will offer resources for individuals to connect, collaborate, study, socialise, exhibit, create and inspire—all within a single location. The primary objective of this initiative is to eliminate the necessity of consumption in order to access creative and welcoming environments, an issue prominently associated with cafes across Glasgow. Each floor should be appropriately zoned to meet the specific requirements of its users. Integral to this space is providing the people of Glasgow with a platform to thrive and express themselves within a distinctive, atmospheric environment. Therefore, the interior design should not only pay homage to the iconic former B.O.A.C offices (where the space is located) but also reflect this vision, whether subtly or extravagantly. The interior goal is not to eradicate the past postmodern typology but rather to revitalise it in a way that suits the 21st century. It's important that the space promotes the feeling of choice for its users, so an appropriate list of amenities should enhance this aspect.

## SITE/BUILDING/LOCATION

-Former British Overseas Airway Corporation (B.O.A.C) offices, 85 Buchanan Street, G1 2JA, Glasgow, Scotland.  
 -B-Listed  
 -Designed by Andy MacMillan & Isi Metzstein of Gillespie, Kidd and Coia for the B.O.A.C. This building started construction in 1968 and was completed in 1970. The building is unique to the area as it juxtaposes Buchanan Streets typical Victorian architecture with a bold copper clad facade and unusual geometric window framing. The current occupants of the site are All Saints—a luxury highstreet clothing retailer who have done an excellent job at harmonising with the original architecture of the building.

## USERS

The space will cater to a diverse range of users, primarily targeting students, remote workers, and artists, while remaining open to anyone in need of its amenities. This inclusive environment welcomes individuals such as readers, poets, introverts, extroverts, colleagues, creatives, students from all disciplines, elderly individuals, young people, and beyond. The ethos still stands - creativity and welcoming environments should not be limited to a specific group of users.

Under 18's are also welcome, however due to the nature of certain laws, these users will be limited to 9am-8pm access.

## OPPORTUNITIES/LIMITATIONS

-It is important to recognise potential issues when it comes to providing the City Centre with a 24 hour space, so the aim is to protect users whilst also providing them with choice.

-Under 18's are limited to certain hours due to laws

-Unrestricted opening hours will provide the user with complete freedom to chose their own desired working / studying / creating hours.

-The exhibition space on the ground floor will give users the opportunity to present their work and test out new ideas. The space will gain traction through the laptop-free café within the exhibition space. This is to bring other users in who may not have a desire to study or work, but more so to socialise. Whilst doing so they are welcome to look around the exhibition space, further emphasising the importance of providing resources to create and inspire.

## CONSIDERATIONS

- inclusivity
- choice
- creative amenities
- education
- user wellbeing
- quiet / private zones
- social zones
- artistic freedom
- laptop / device essentials
- mid century/post modernism
- atmosphere
- exhibition space
- reasonably priced laptop-free café (groundfloor)
- strong interior identity
- tributes to airports
- reception/ sign-in area
- toilets
- kitchenette area
- 24 hour access solutions

## EXPECTED OUTPUTS

-A moodboard/inspiration scrapbook that captures present thought process in an unconventional way

-A 'zine'style portfolio submission

-To create a unique, atmospheric environment that honours the B.O.A.C's postmodern interior, be it subtle or extravagant

## ESSENTIAL DOCUMENTS

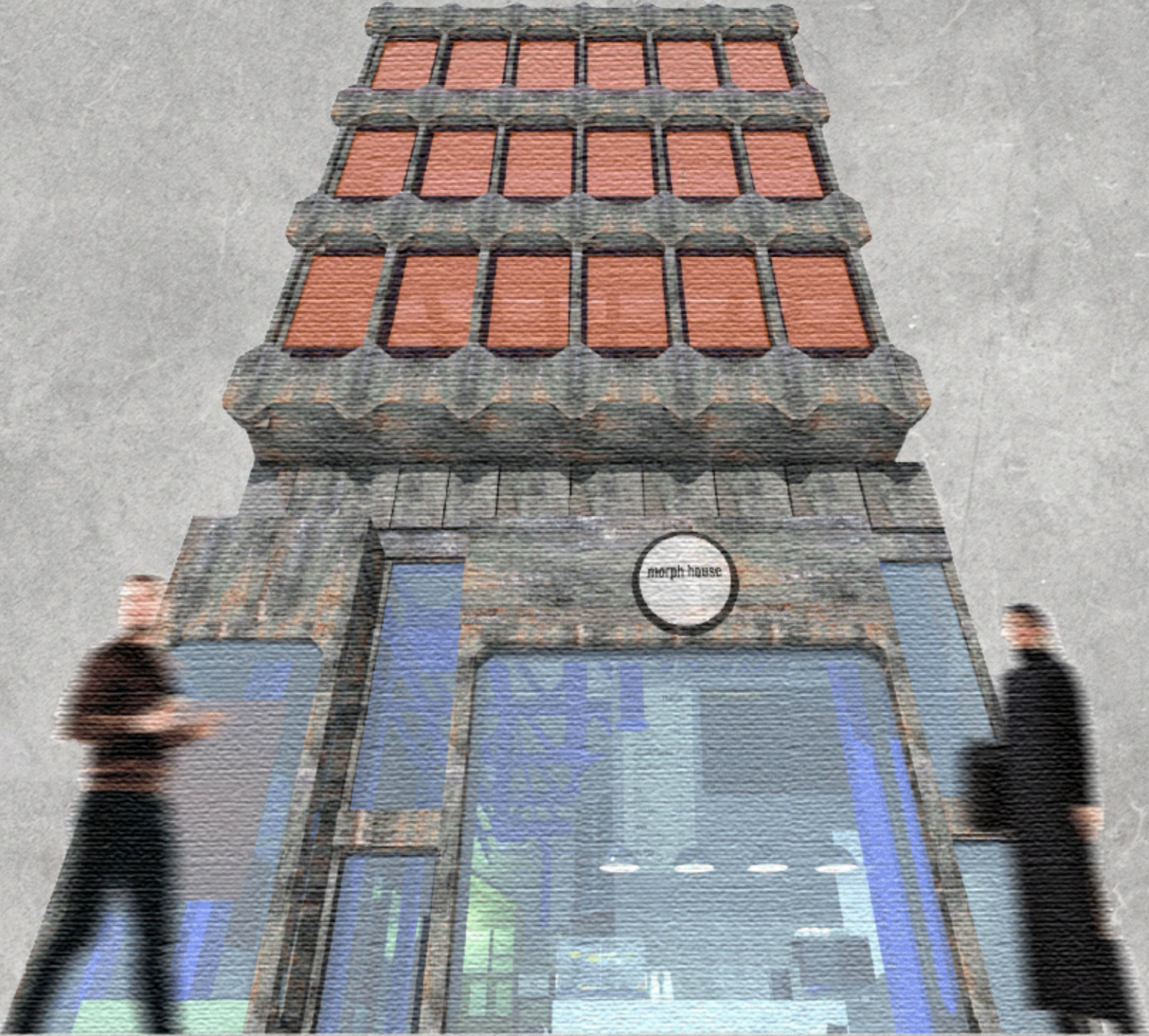
'All you need to know about a 24 hour co-working space' <https://www.andcards.com/blog/tips/24-7-coworking-space>

'Glasgow City Centre Recovery Plan' <https://glasgow.gov.uk/index.aspx?articleid=30134>

'Laptop friendly Glasgow Cafes' - Reddit-the publics voice [https://www.reddit.com/r/glasgow/comments/186omls/laptop\\_friendly\\_glasgow\\_cafes/](https://www.reddit.com/r/glasgow/comments/186omls/laptop_friendly_glasgow_cafes/)



born to flourish, forced to consume



## MATERIALS

Gemini (May 21 - June 20)

Hey Gemini, this month, your adventurous spirit is on fire! You're feeling the urge to break free from the ordinary and dive headfirst into new experiences. Morph House's vibrant energy is calling your name, urging you to explore and embrace the world around you. Allow yourself to be inspired by the art and creativity you encounter. Trust your instincts and follow your passions, even if it means stepping outside of your comfort zone. Remember to stay true to yourself and your values as you navigate this exciting journey. Embrace the thrill of the unknown and let your enthusiasm light the way! Happy birthday Gemini

## HOROSCOPE

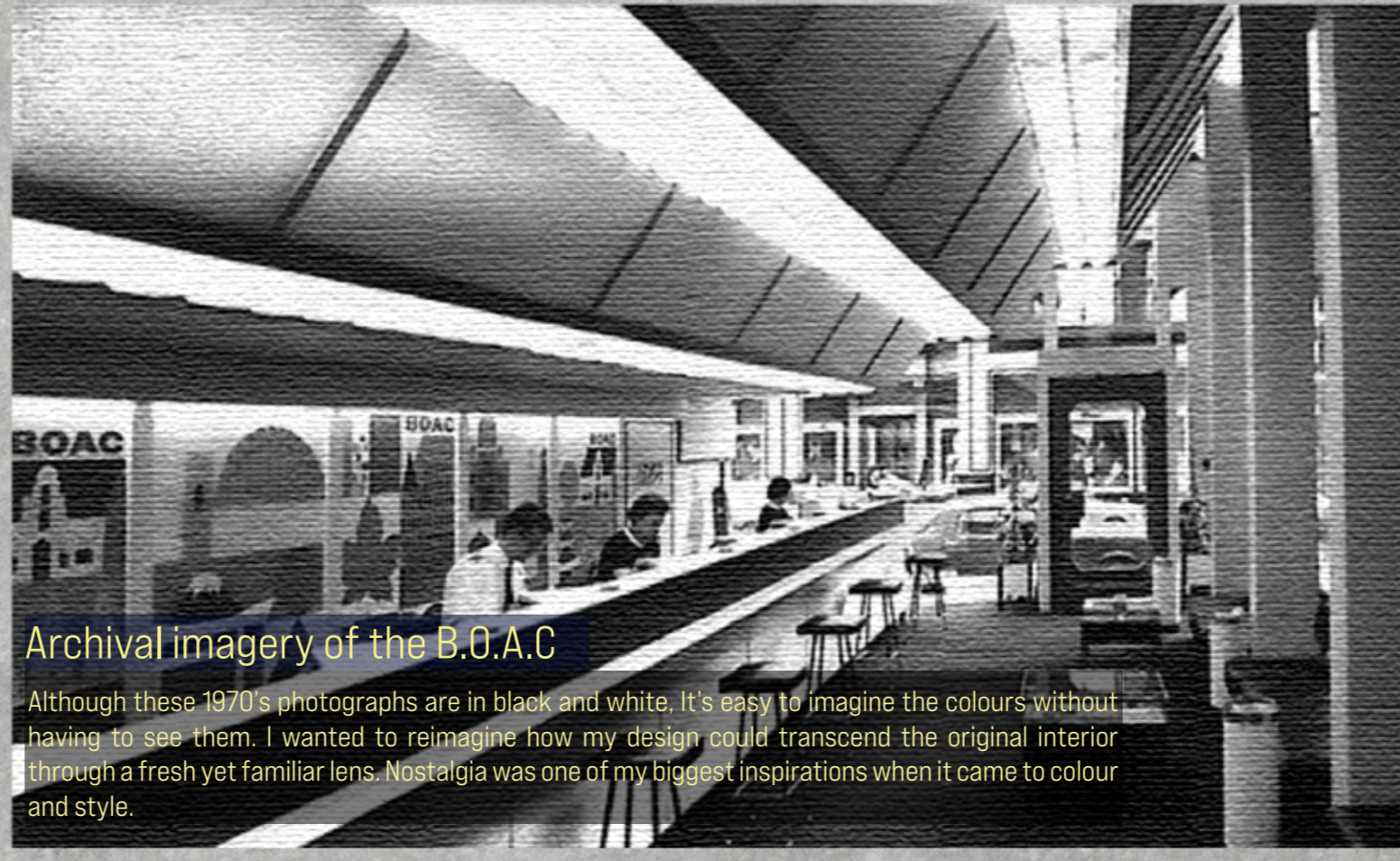
Taurus (April 20 - May 20)

Hiya Taurus, this month is all about finding comfort and stability. You can do this on the third floor in the private zone where working solo may help you find your inner peace. Seek you-time by trying something new...channel your artistic side in the crafts space—it'll bring you a sense of grounding and fulfillment

## WORDSEARCH

- collaborate
- postmodern
- exhibit
- inspire
- airport
- coffee
- lounge
- morph
- quiet
- connect
- check-in
- laptop
- social
- BOAC
- plane

V U C T P R Z W S C V R B C C  
 W I C R A F B O N M F J I H O  
 C L L O P K D L O U N G E E N  
 B O D N L O S C U X J V P C N  
 P X F K C L S A B Q M G L K E  
 L Y D F B X A T G O U B A I C  
 U W Z E E H I B M P A I N N T  
 G K T C X E K N O O Z C E F W  
 S M O R P H C V S R D Q E T M  
 O M K V L X I F O P A E M U Q  
 C I H C R A I B H N I T R G P  
 I S K P W C P E I O T R E N O  
 A A I R P O R T Y T U J E A P  
 L B W O C A G I O Y Q S Y F L  
 D E I G W N J E R P W D E A S



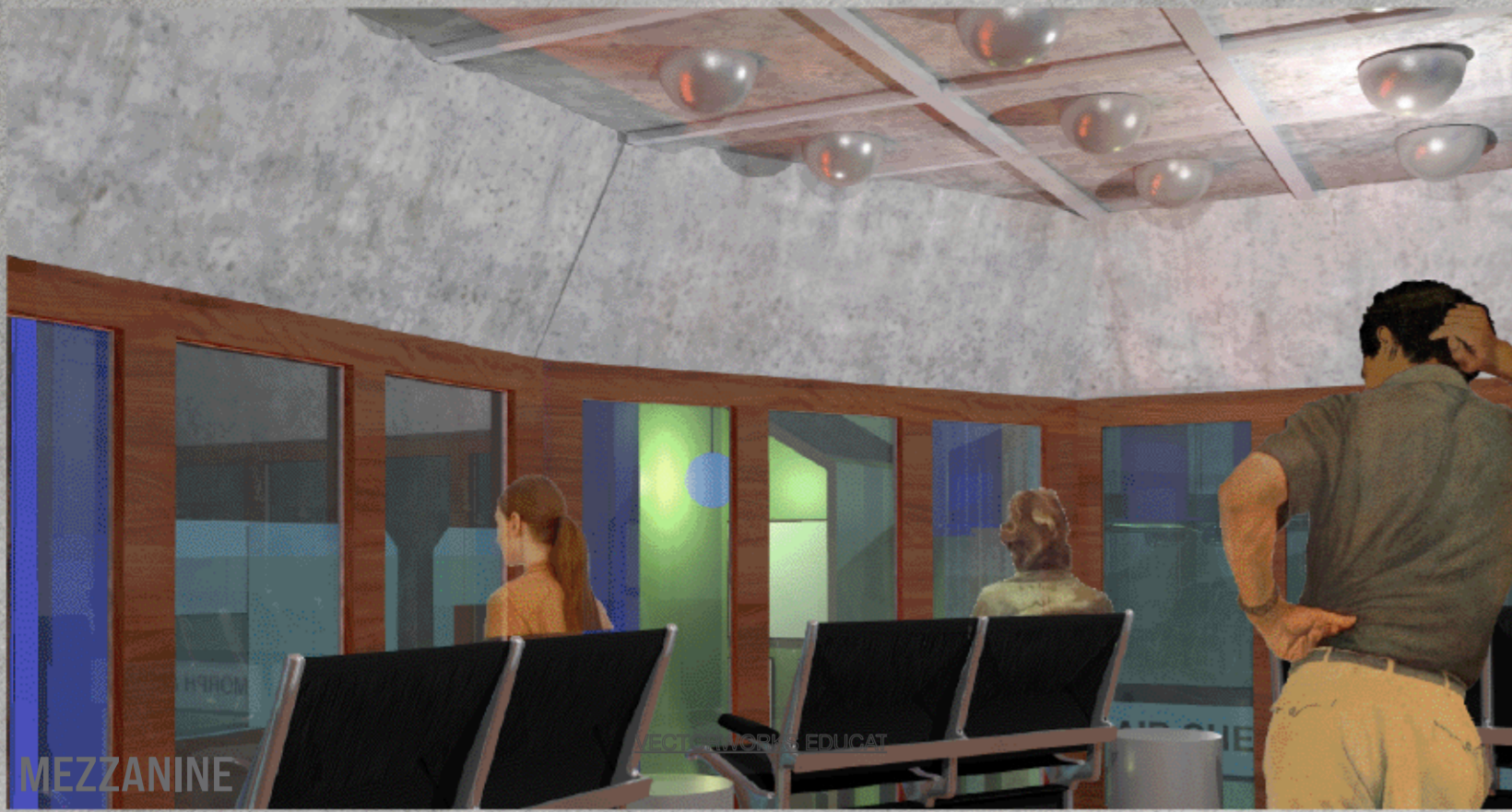
## Archival imagery of the B.O.A.C

Although these 1970's photographs are in black and white, It's easy to imagine the colours without having to see them. I wanted to reimagine how my design could transcend the original interior through a fresh yet familiar lens. Nostalgia was one of my biggest inspirations when it came to colour and style.

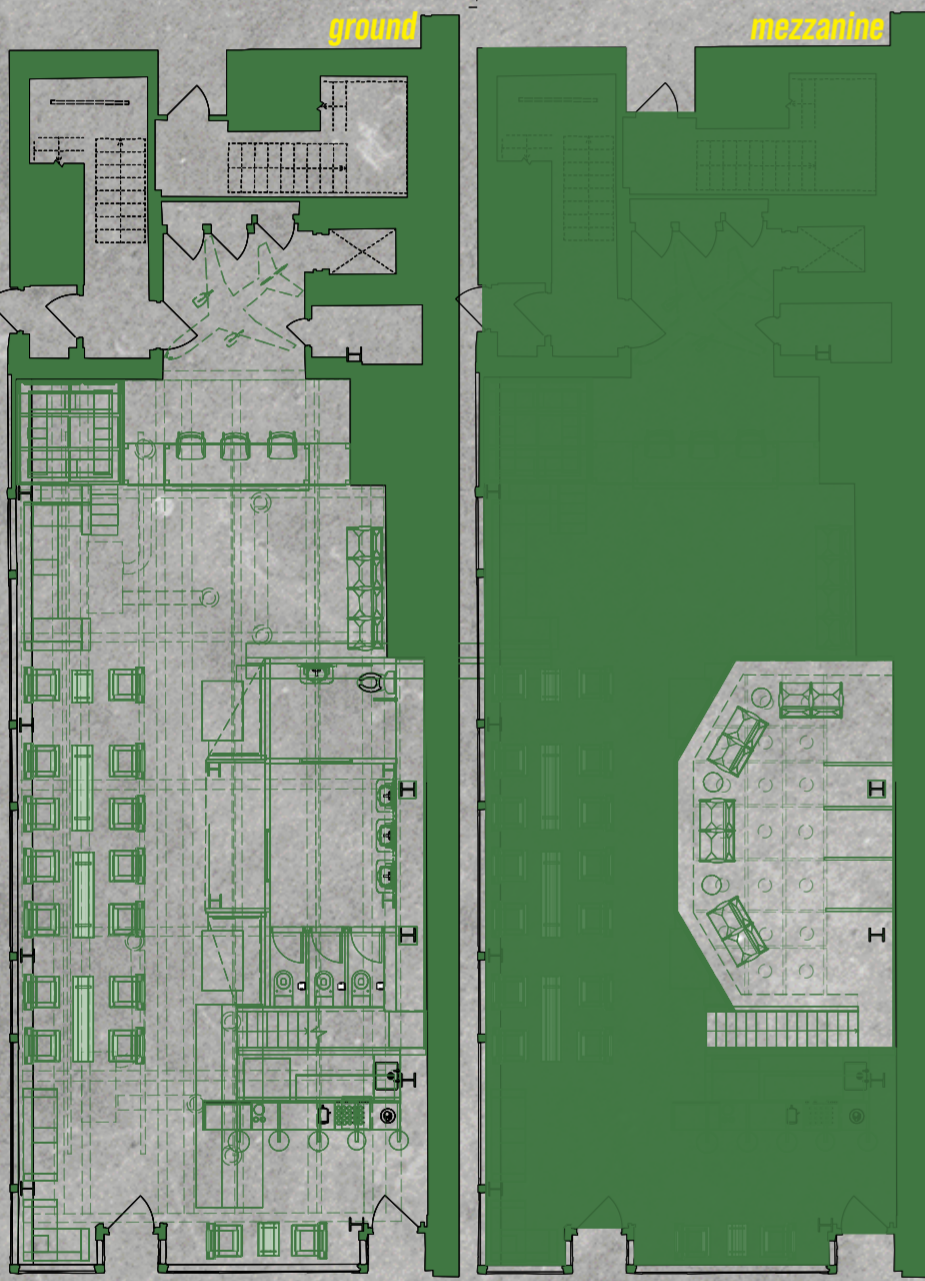


I decided to present my project in the format of a free monthly magazine. This allowed me to demonstrate the playful style that I incorporated into my design and also to highlight the events and activities happening at Morph House. The front cover reflects the postmodern style I aimed to achieve, setting the tone for the rest of the submission. The first 8 pages are filled with advertisements, similar to a real magazine or newspaper. The QR is only a taster, the printed version is 54 pages long, with the final spread featuring a horoscope and puzzle page. Each horoscope paragraph is personalized for each zodiac sign, incorporating elements of Morph House into each one.





MEZZANINE



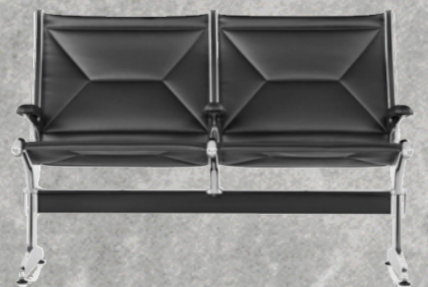
GROUND FLOOR + MEZZANINE  
(GATE 0)



Mezzanine exploded view

**FURNITURE CHOICES**  
As nostalgia was one of my main design pointers, I made sure the furniture choices reflected this. Blending a mixture of midcentury, postmodern and bespoke pieces, the interior comes together through the embracement of the past whilst adding freshness through bespoke creations.

1962, Eames Tandem Sling Seating



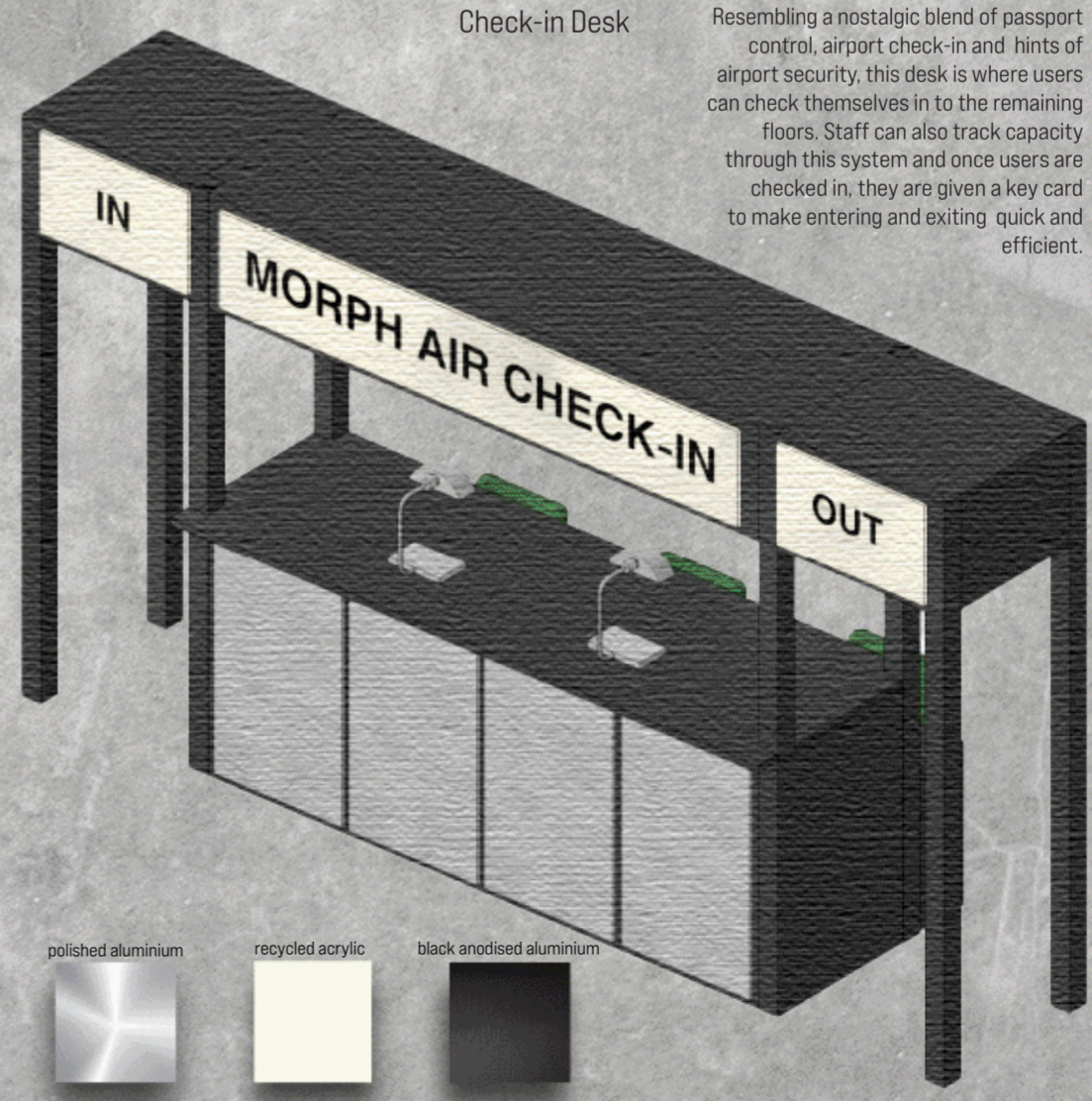
In order to design the space to its fullest potential, I had to grasp why people gravitate towards cafes to work...what is it about cafes that make people feel comfortable enough to whip out their laptop? Why cafes and not other social establishments? I have included a QR code link to my self directed research proposal which unpicks these questions. This method of combining academic research with a playful design process helped me build a strong concept that allowed the final design to flourish.



GROUND FLOOR

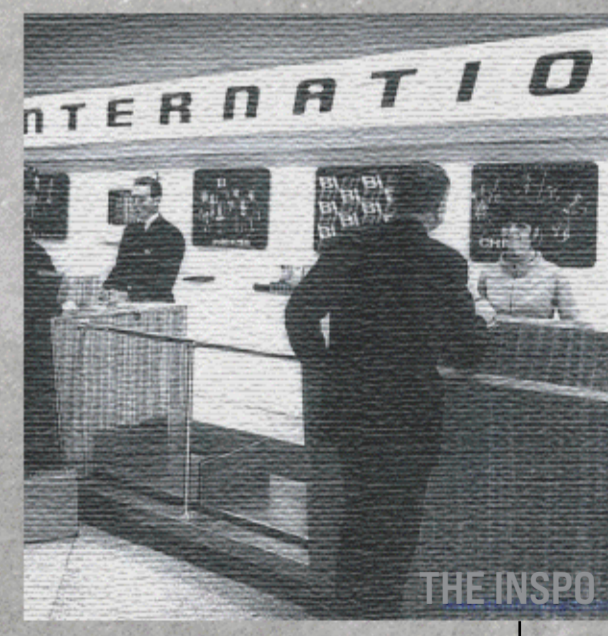


Conversation Pit  
Inspo: airport solar panels

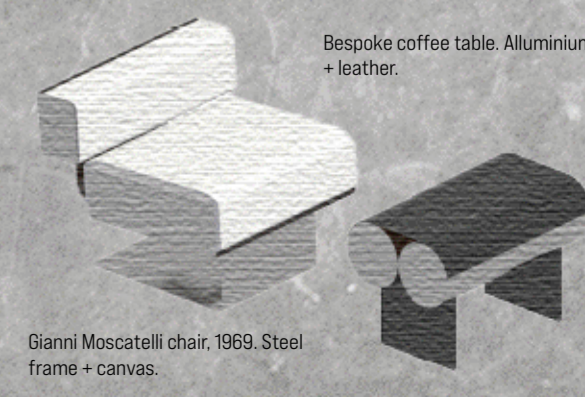


Check-in Desk

Resembling a nostalgic blend of passport control, airport check-in and hints of airport security, this desk is where users can check themselves in to the remaining floors. Staff can also track capacity through this system and once users are checked in, they are given a key card to make entering and exiting quick and efficient.



THE INSPO



Bespoke coffee table. Aluminium + leather.

Gianni Moscatelli chair, 1969. Steel frame + canvas.





**menu**

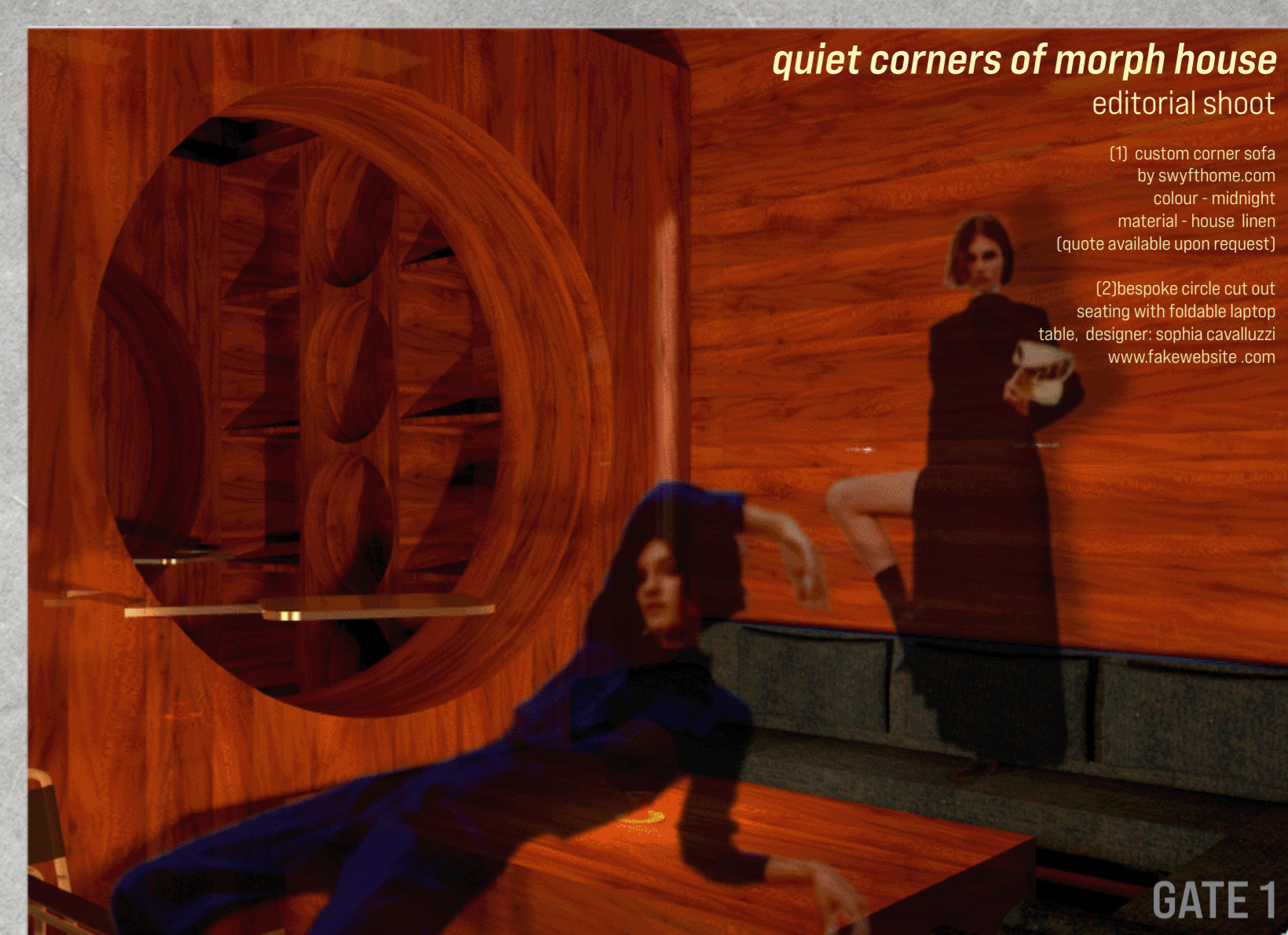
**coffee**

latte	2.5
cortado	2
flatwhite	2.4
cappuccino	2.5
macchiato	2
americano	2.2
<b>specialist coffee</b>	
V60	3.2
japanese iced	3.3
aeropress	3
kalita	3
<b>tea</b>	
green	2
builders	2
london fog	2.2
mango	2.1
<b>other</b>	
hot chocolate	2.2
iced matcha	2.3
<b>alt. milk</b>	
oat/coconut	free

**Departures**

EVENT	DATE	TIME	GATE	SPACES
DRAWING CLASS	07/05	14:00	2	FULL
CROCHET	07/05	18:00	2	3 LEFT
EXHIBITION	10/05	19:30	0	15 LEFT
FILM NIGHT	16/05	20:00	1	9 LEFT
NIGHT STUDY	16/05	01:00	2	11 LEFT
DRAWING CLASS	20/05	10:00	2	6 LEFT
BREKKY CLUB	21/05	08:00	0	FULL
DIGITAL DETOX	22/05	17:00	0	7 LEFT

GROUND FLOOR CAFÉ



quiet corners of morph house  
editorial shoot

(1) custom corner sofa  
by swyftHOME.com  
colour - midnight  
material - house linen  
(quote available upon request)

(2) bespoke circle cut out  
seating with foldable laptop  
table. designer: sophia cavalluzzi  
www.fakewebsite.com

GATE 1

## WHAT'S ON?

Why not come along to one of our many activities and events running throughout May? This month our focus is connecting with others, so our activities reflect this!

Join Izzy Buxton for her drawing class, where she will teach you the basics of sketching. This fun class gives you the chance to learn a new skill while catching up with your mates!

Breakfast club is the perfect opportunity to meet new people, or simply eat your toast in a nice environment. Start off the day right!

Love that scarf your nan made you for christmas that one year? Learn how she made it at our crochet class.

Are you a night owl? The beauty of our space being open 24hrs means we can host events smack bang in the middle of the night, how about a fun late night study session with snacks, music and the best vibes?!

Take a break from your laptop at our digital detox class and learn techniques for winding down after a long day at work. This months solo exhibitor is Sophia Cavalluzzi, an artist whos work explores themes of liberation and oppression. Don't miss Whalebone, opening 10/05 on our mezzanine.

flourish in the atmosphere of it all

**Departures**

EVENT	DATE	TIME	GATE	SPACES
DRAWING CLASS	07/05	14:00	2	FULL
CROCHET	07/05	18:00	2	3 LEFT
EXHIBITION	10/05	19:30	0	15 LEFT
FILM NIGHT	16/05	20:00	1	9 LEFT
NIGHT STUDY	16/05	01:00	2	11 LEFT
DRAWING CLASS	20/05	10:00	2	6 LEFT
BREKKY CLUB	21/05	08:00	0	FULL
DIGITAL DETOX	22/05	17:00	0	7 LEFT

**menu**

**coffee**

latte	2.5
cortado	2
flatwhite	2.4
cappuccino	2.5
macchiato	2
americano	2.2
<b>specialist coffee</b>	
V60	3.2
japanese iced	3.3
aeropress	3
kalita	3
<b>tea</b>	
green	2
builders	2
london fog	2.2
mango	2.1
<b>other</b>	
hot chocolate	2.2
iced matcha	2.3
<b>alt. milk</b>	
oat/coconut	free

## TAKE A BREAK

The thing about Morph House is that we like to give our users the option to study caffeine-free, but also who doesn't love a wee coffee every now and again? There's no pressure, but the option is there!

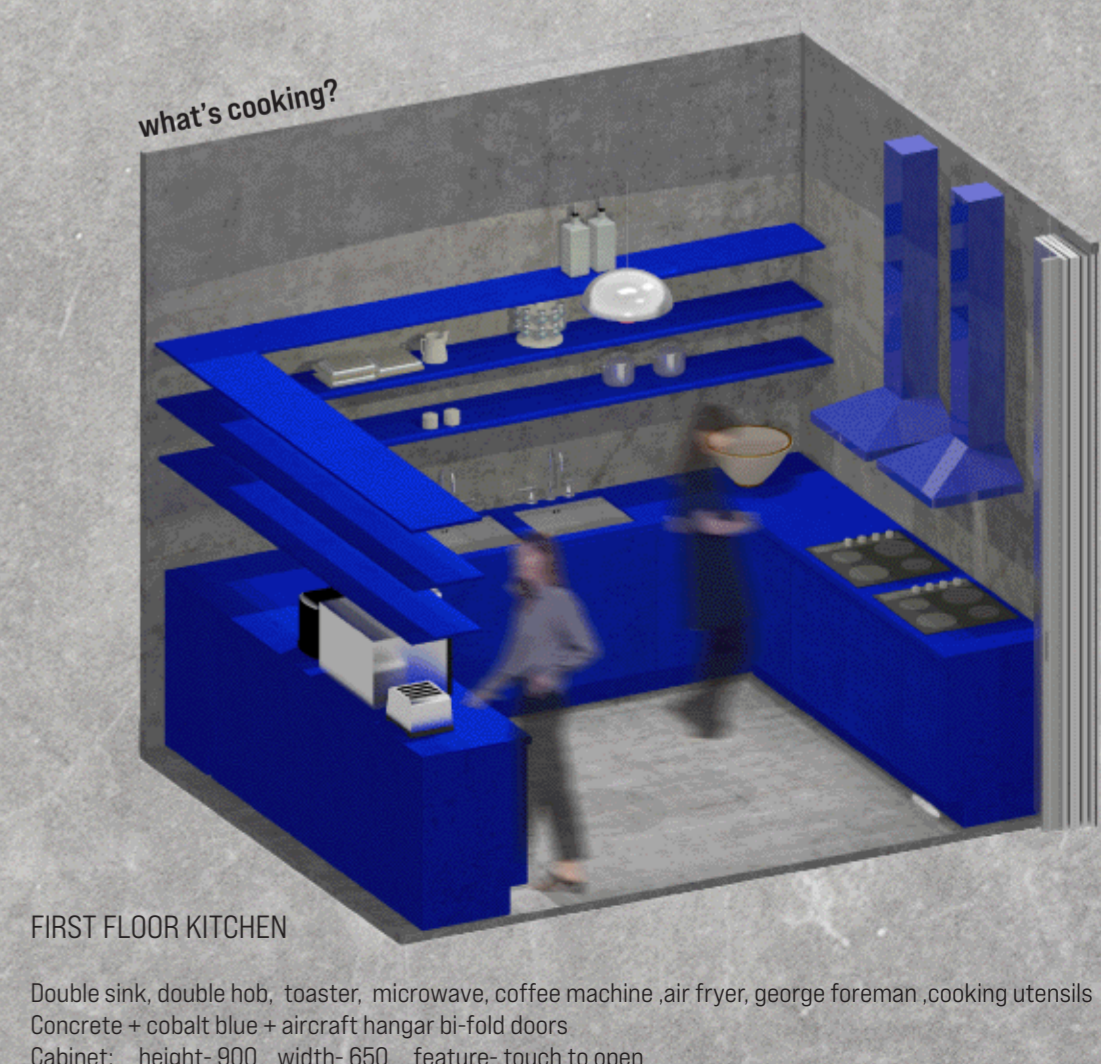
We made our cafe laptop-free to encourage human connection, so if you wanna get some work done not to worry, head on up to our other three floors where you can use your laptop to your hearts content.

Our cafe is reasonably priced to bring users in but also because we deemed it unnecessary to inflate our prices. The reason many cafes have to charge a fortune for a latte is because they need to factor in laptop usage into this cost. If a customer is using their laptop within a cafe environment and taking up a 4-person table, only buying 1 item every 3 hours, this can have a negative effect on the business. We fixed this issue by providing the people of Glasgow with a space to freely study, remote work and so on without the need to buy coffee every hour.

EXTRACTS FROM MY MAGAZINE



FIRST FLOOR SOCIAL STUDY AREA



FIRST FLOOR KITCHEN

Double sink, double hob, toaster, microwave, coffee machine, air fryer, george foreman, cooking utensils  
Concrete + cobalt blue + aircraft hangar bi-fold doors  
Cabinet: height- 900 width- 650 feature- touch to open





FIRST FLOOR VISUAL

## MAKERS SPACE

## GATE 2

i know this place, and this place knows me

The purpose of this floor is to provide creative amenities for Morph House users including tools for art, printing, 3d printing, sewing, model making and so much more!  
 The layout has been constructed in a way to keep the space social whilst also providing users with the option to work on their own through the versatility of the portable modular tables. The original stance of the tables and stools are conjoined in the centre of the room, but they can be taken apart and positioned in any desired way.



FRONT VIEW OF BESPOKE AIRCRAFT HANGAR STORAGE UNIT



- Lamp by Stěpán Tabery 1960s
- "W" Molded Ply Magazine Stand by Offi & Co in Black
- Italian-made Arc Metal Floor Lamp, 1970s
- Moooi Meshmatics Chandelier Rick Tegelaar, 2017
- Holloway Round Concrete Side Table
- Bespoke square timber coffee table, mahogany
- Geiger Tuxedo Component Lounge Corner Unit, non quilted
- Gianni Moscatelli chair, 1969.
- Anthurium plant
- Safavieh Woven Light Blue Oval Rug
- Westex Ultima Twist Penultima Mistletoe carpet

### OBJECTS FOUND IN THE THIRD FLOOR PRIVATE MEETING CUBICLES

*I gaze out off into the distance, watching the world drift by. The world has transformed around us, yet in this fleeting moment, everything remains unchanged.*

-EXTRACT FROM MY MAGAZINE

(Right) Bespoke shelving unit, stained elm  
 (Left) Bespoke table, oak

## QUIET/PRIVATE ZONE GATE 3

The purpose of this floor is to provide THE PRIVATE JET

Finally, we are met with the quite/private zone on the top floor. This area contains cubicles varying in different sizes to accommodate a range of different needs. The cubicles are made private and sound proof through bespoke 'air hangar' style doors. The space also hosts solo study cubicles in the style of first-class aeroplane seating. At the end, we are met with the largest meeting space which can be used for a variety of different events.

