

# JEMMA MURDOCH

The Greenhead Collective is the first communal living based residence in the Glasgow area. A thoughtfully designed residential space that blends modern living with community-centered amenities.

It's built to support both personal growth and collective wellbeing. This space redesigns what community housing could look like in the future



ORIGINAL BUILDING



PROPOSED



LOCATION PLAN



KEY PLAN



SITE BOUNDARY



greenhead  
collective

25 GREENHEAD STREET  
GLASGOW  
G40 1ES

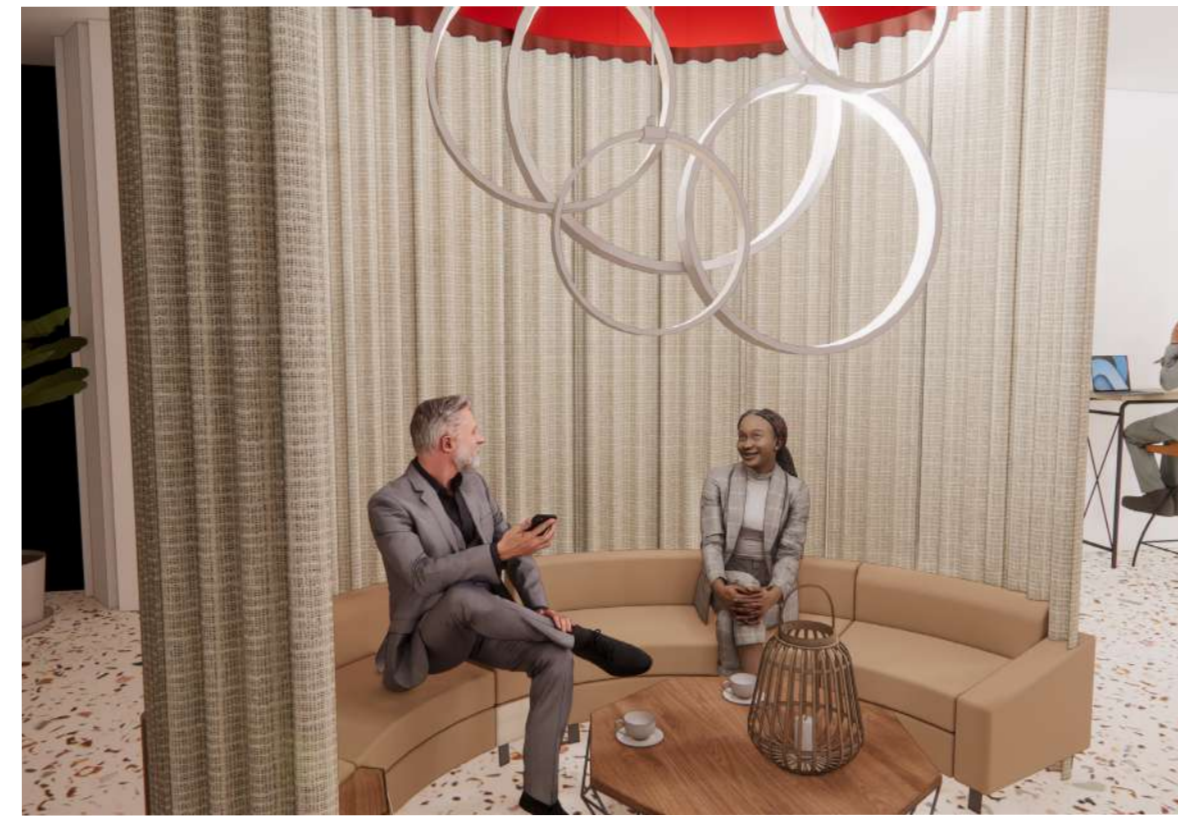
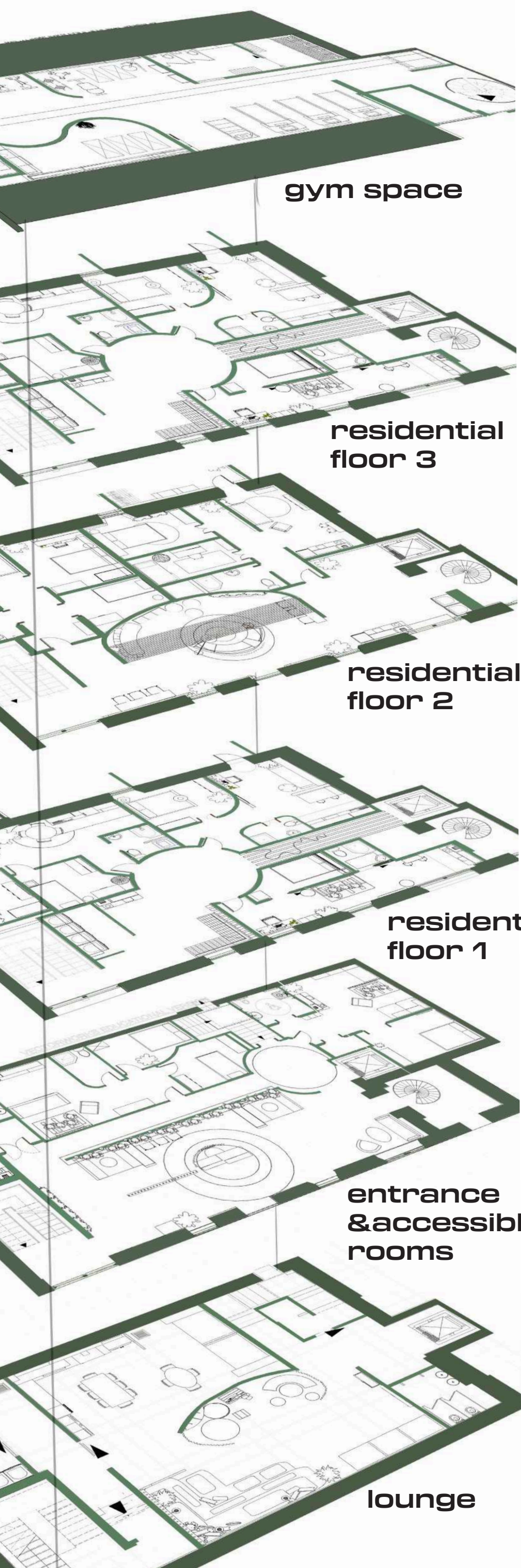


Bridgeton Train Station  
8 mins walk

Graignestock Street  
bus stop  
6 mins walk

Walk to city centre  
23 mins





The inside of this site spans across 6 floors including a basement and attic.

The community has space to live comfortably whilst also being woven together with their neighbours.

Each floor is built with the residents in mind to ensure they feel comfortable and safe in their home.

Each floor offers connection and privacy.



INITIAL CONCEPT CUBE



# COMMUNITY SPACES

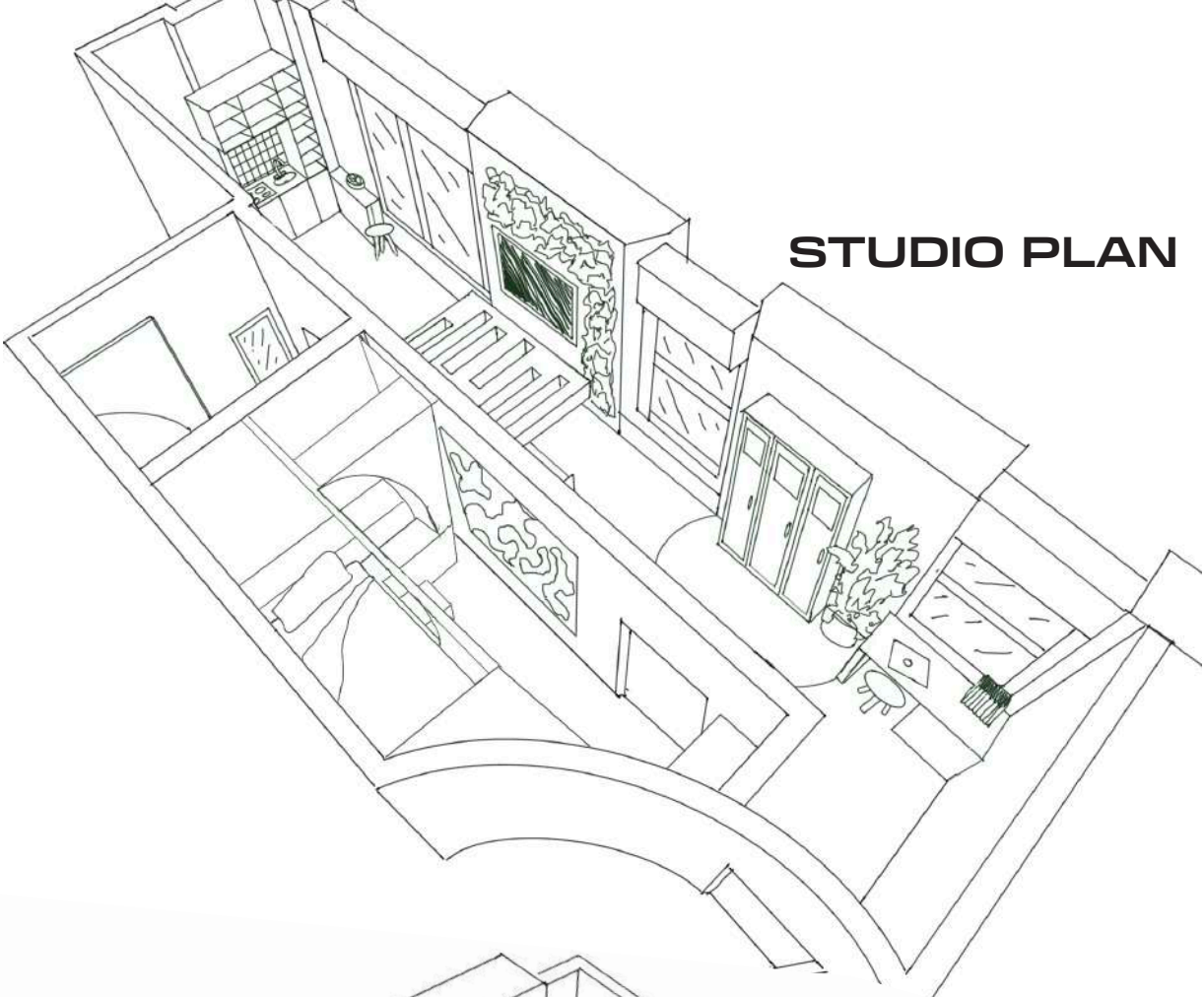


At the Greenhead Collective we have a variety of units available for long and short term rent.

- 2 studio units
- 3 single bed units
- 5 double bed units
- 1 accessible modified unit

Each of these units are equipped with basic amenities with some having more private amenities and those that are more communal.

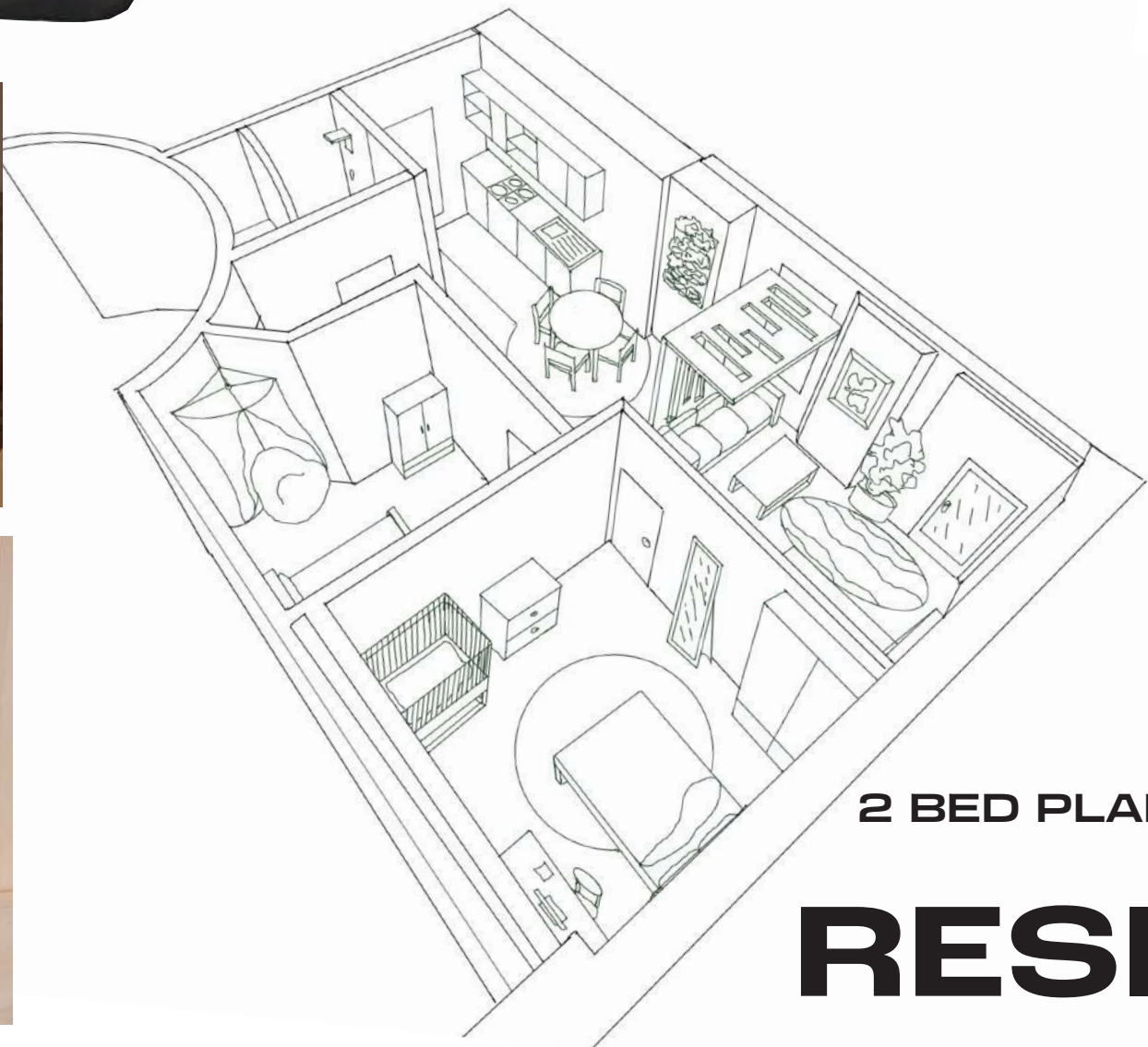
This type of residence rethinks typical apartment housing as it has a focus on community and evolution with its tenants.



STUDIO PLAN



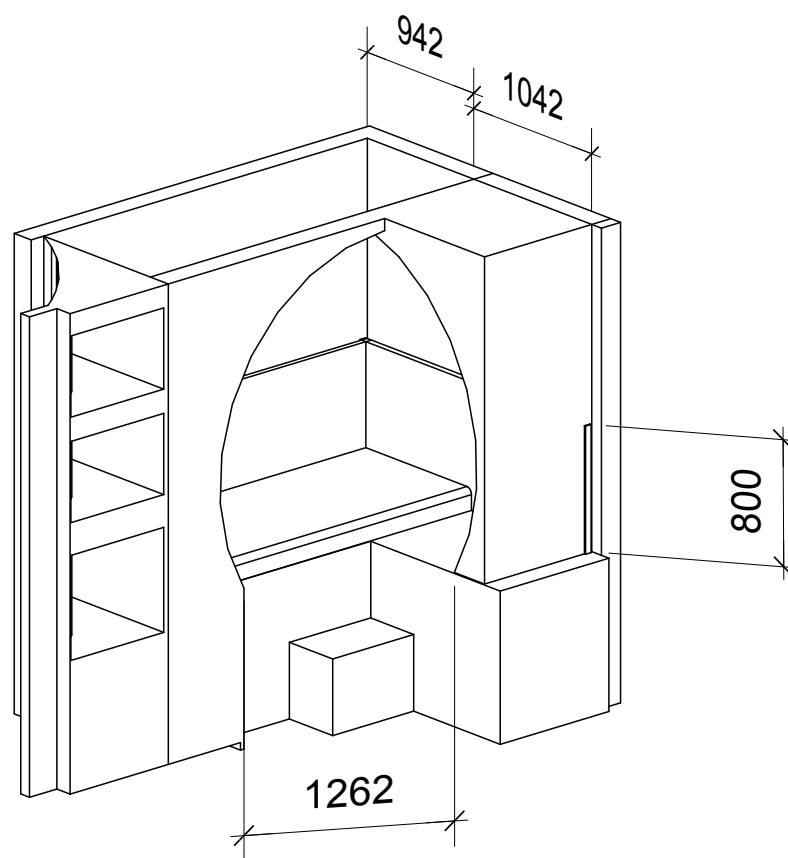
1 BED PLAN



2 BED PLAN

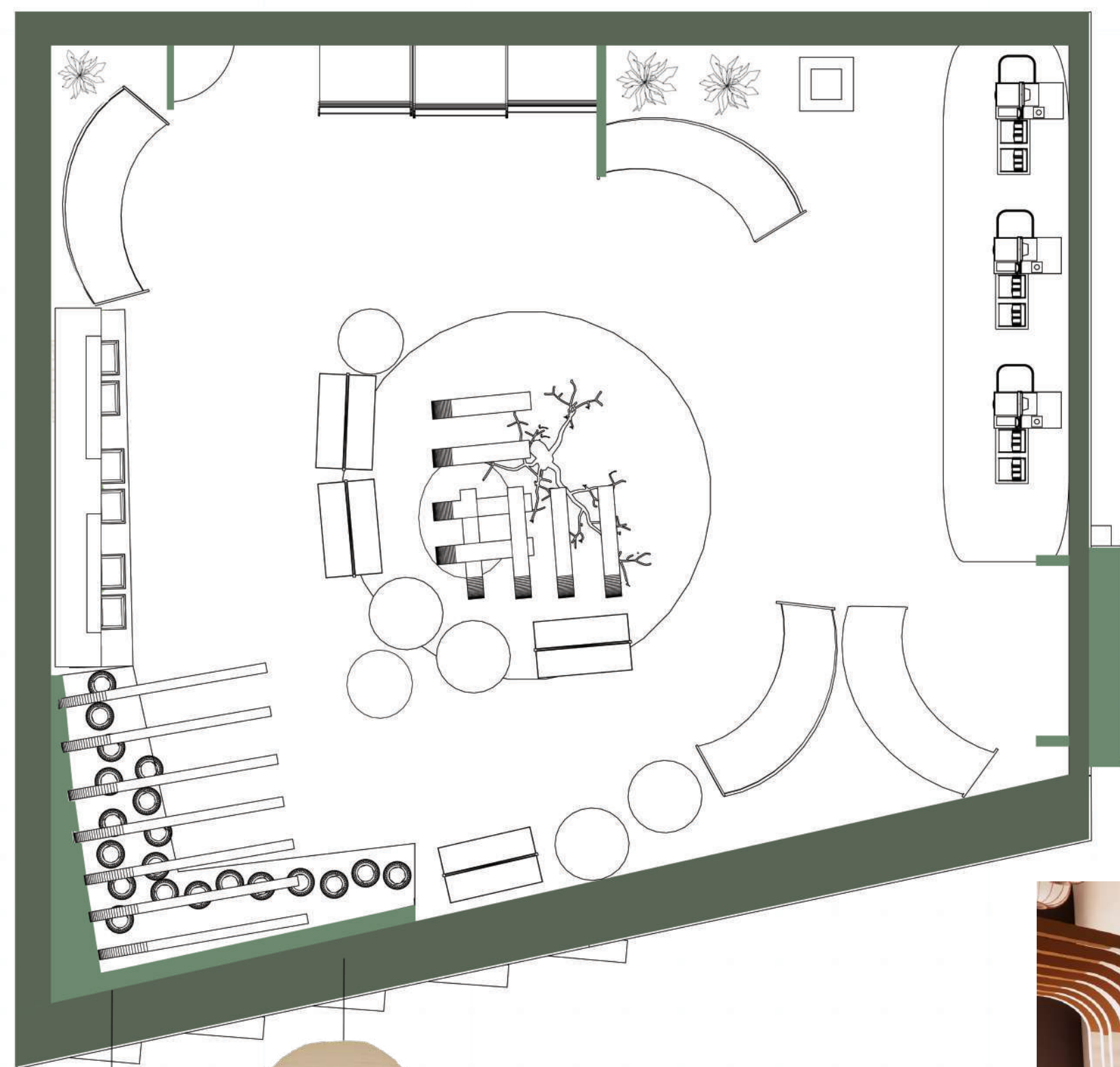


INITIAL CONCEPT CUBE



# RESIDENTIAL SPACES

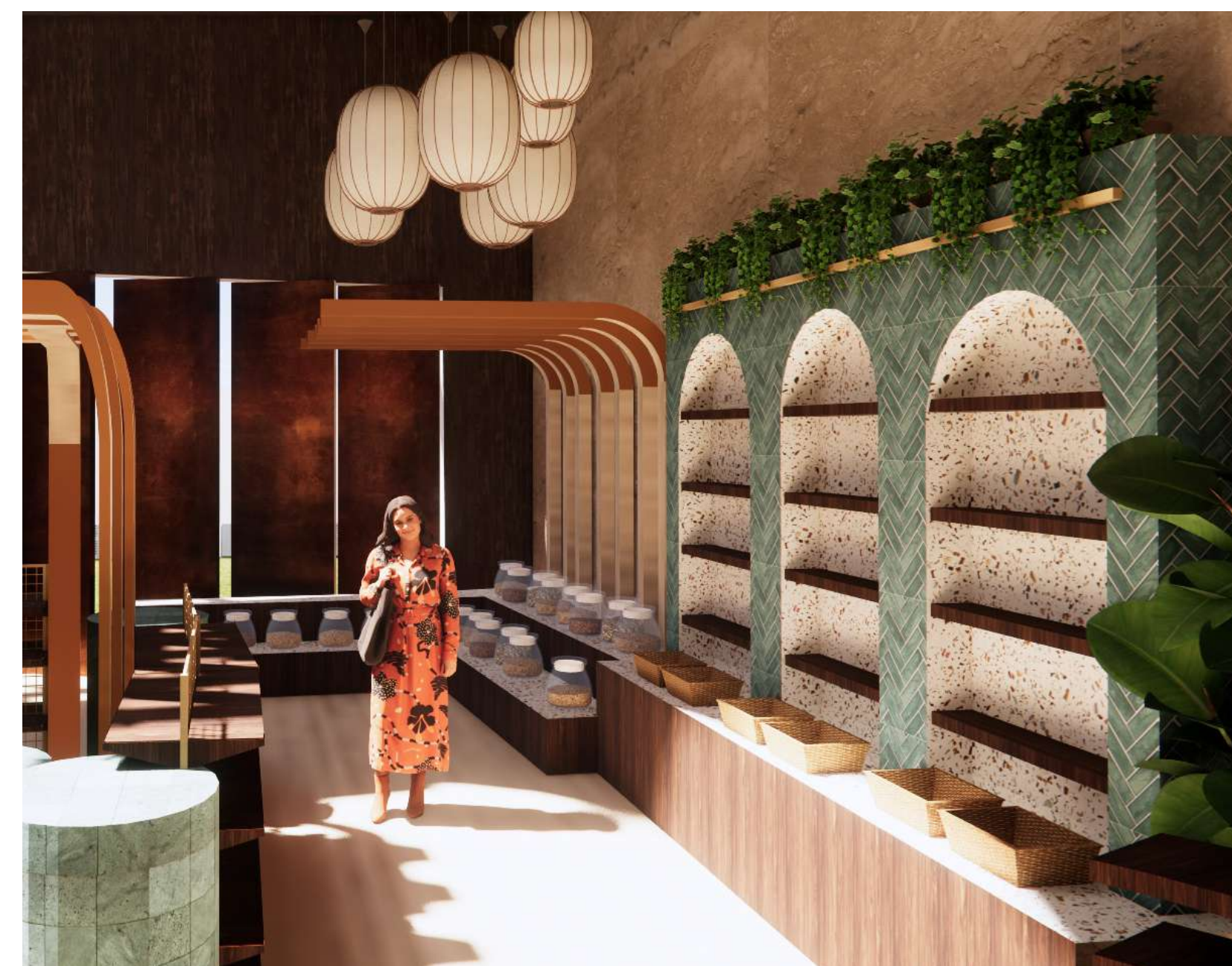
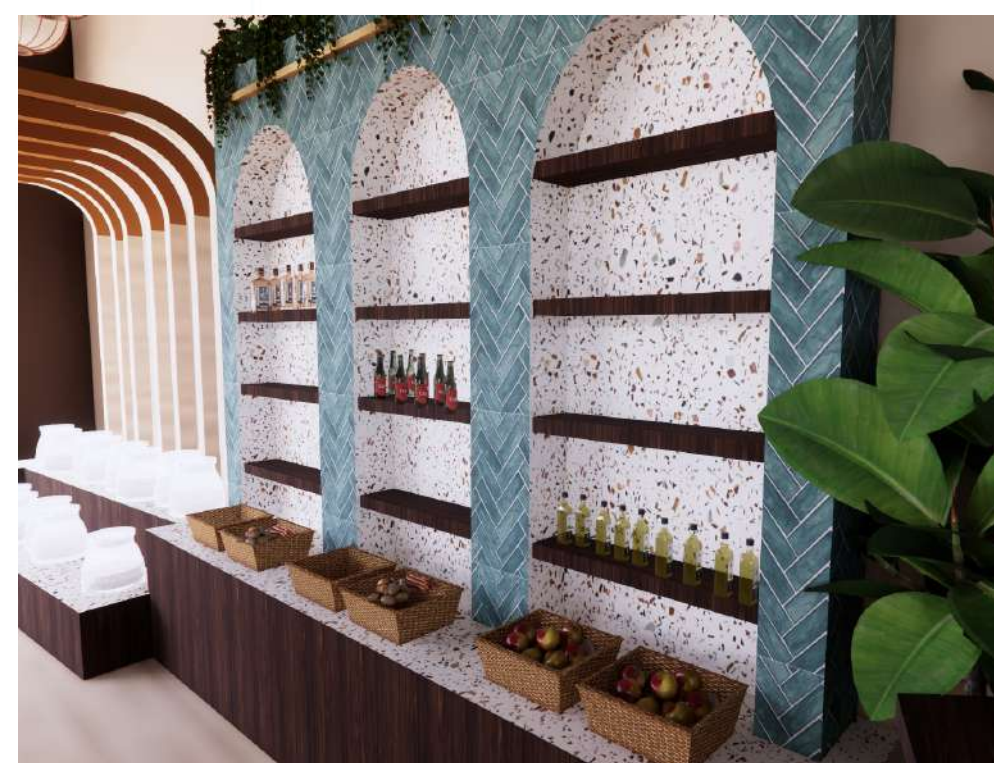




On site the shop is open for both residents and the public. Having an ecoconscious grocery store means you don't have to go far for quality.

Having access to food close to home means it removes any need to travel just to get essential items.

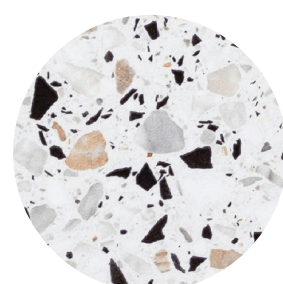
The Greenhead Collection solves this and makes grocery shopping easy.



#### MATERIALITY



Parker Chevron tiles



Stone Superstore Venezia Bianco Tiles



Farrow&Ball Desert Khaki



Foresso Bianco London plane

#### SPECIFICATION

# GROCERY SPACE





In the attic of the Greenhead Collective there is a gym area equipped with a locker and shower room, machine area, yoga suite and weighted area.

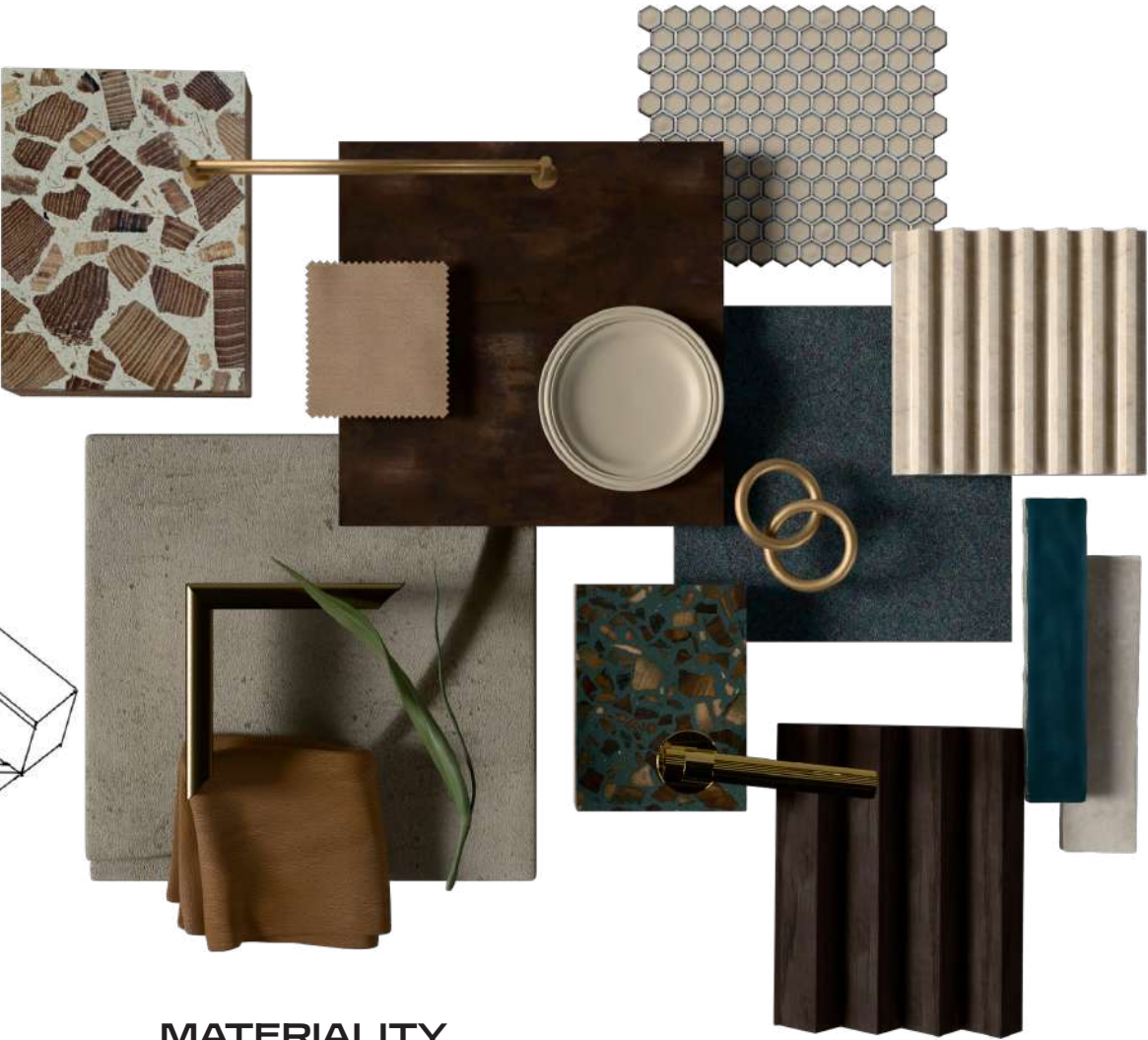
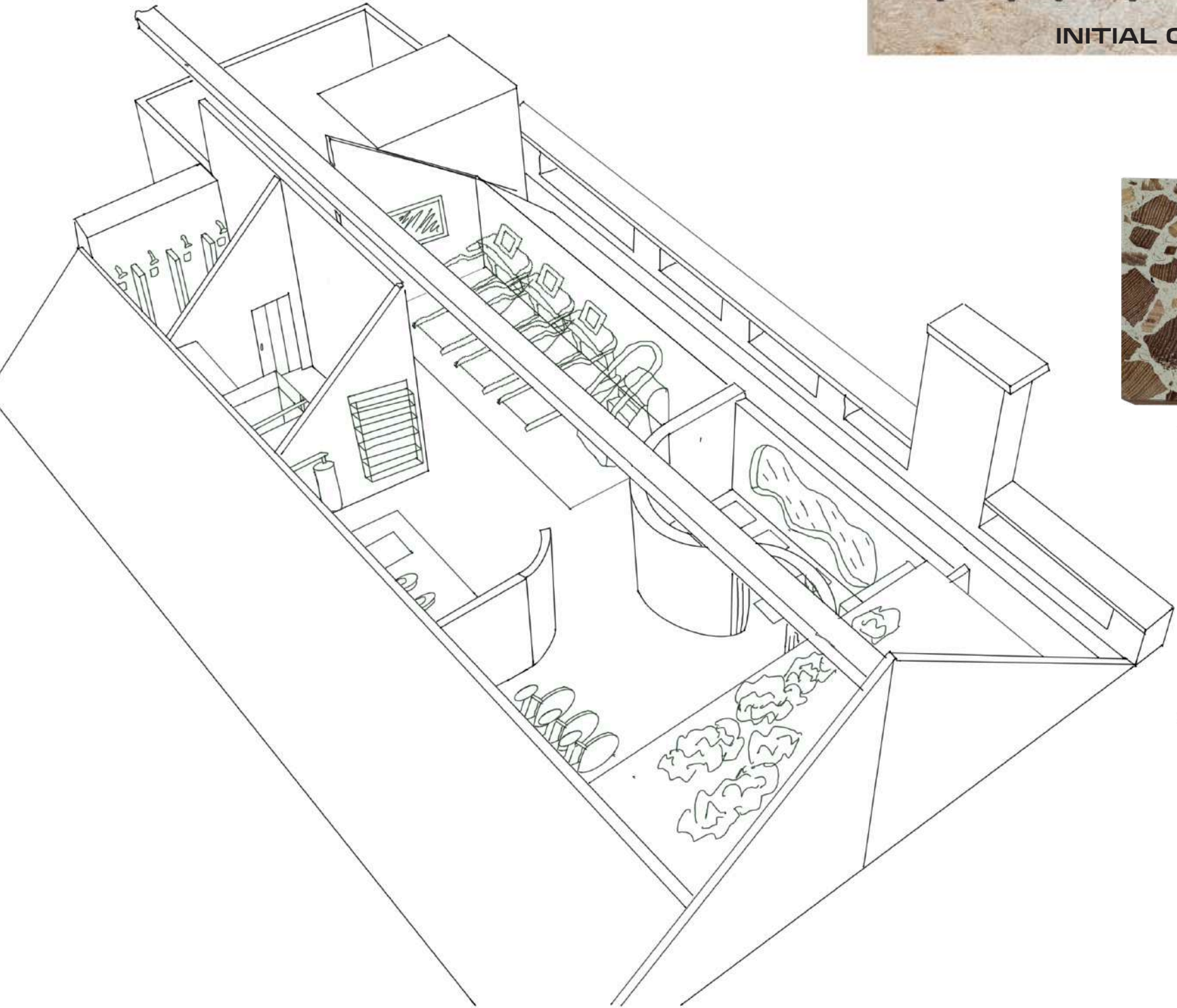
The goal is to allow the residents to maintain healthy lifestyles and skips the hassle of going far for another gym space.



INITIAL CONCEPT CUBE



# GYM SPACE



MATERIALITY