

The Grow & Gather Dome

The Grow and Gather Dome is an innovative urban farming and community hubs situated within Glasgow’s historic Rotundas, connected by a revitalised underground tunnel. This project reimagines how urban interiors can build deeper connections between people, food, and place by blending indoor agriculture, education, and social interaction into one cohesive experience. The Dome offers a hands on learning experiance, multi-sensory journey through The North Rotunda, The Tunnel, and The South Rotunda, designed to immerse visitors in the origins of food production, sustainable practices, and communal well-being while responding to larger issue of food scarcity.

Through thoughtful spatial design and sustainable materials, the project transforms heritage architecture into a living ecosystem that encourages learning, engagement, and shared experiences. Grow and Gather Dome is a new model for interior environments, where functionality, education, and connection to nature coexist creating a vibrant, meaningful space.



Site analysis



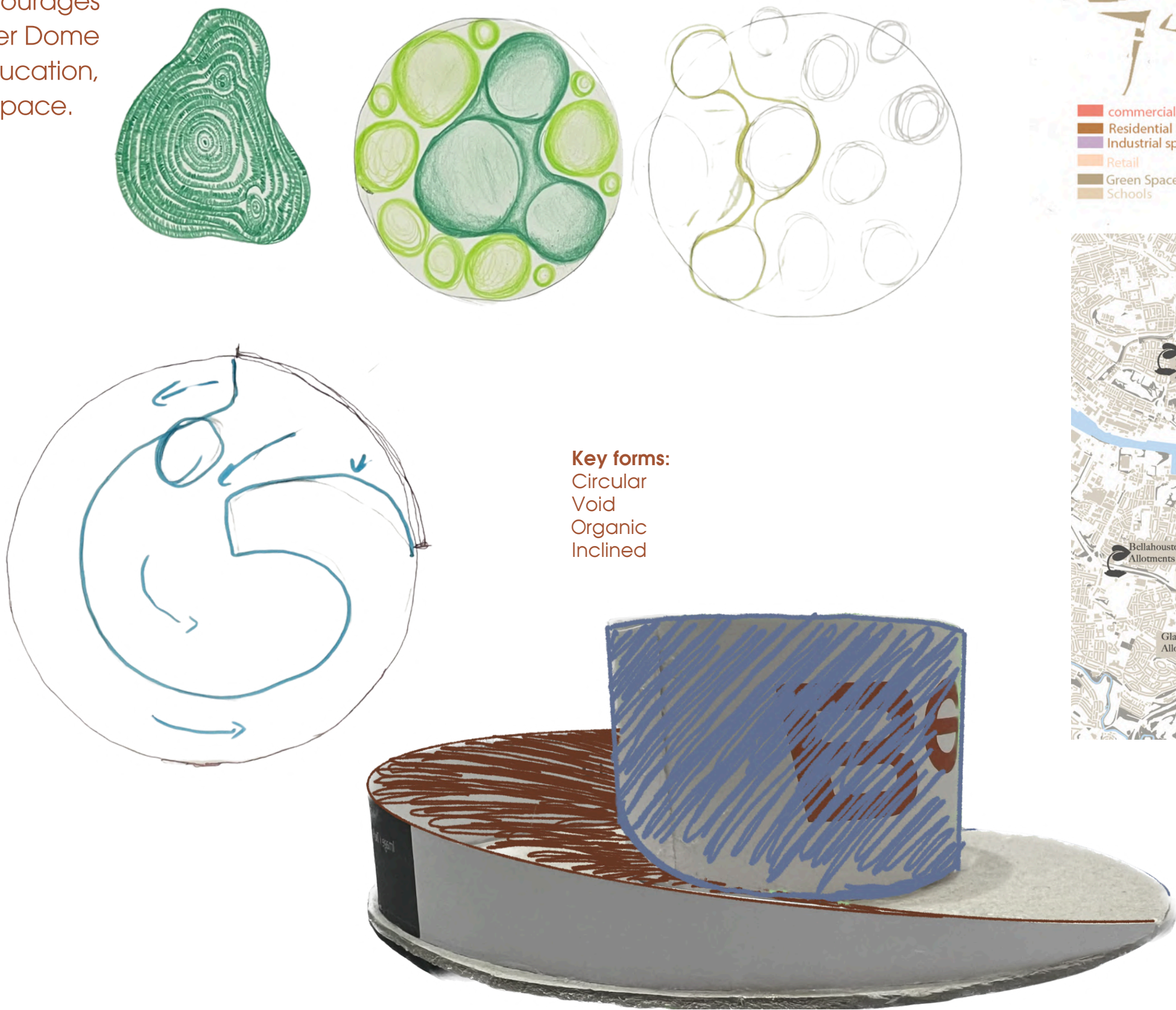
Allotments surrounding 3 miles from the Site.



South Rotunda

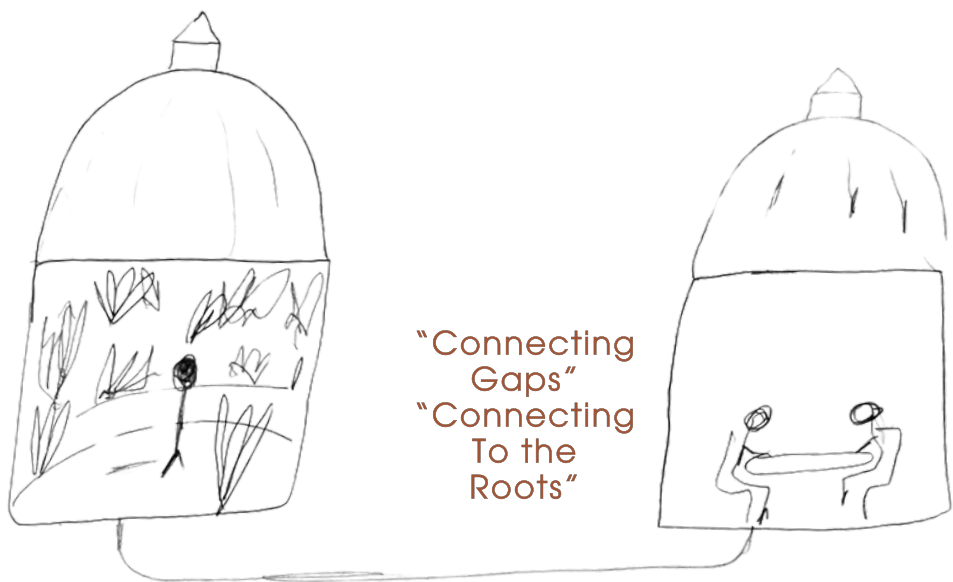
Tunnel

North Rotunda



Key forms:
Circular
Void
Organic
Inclined

Sketch Model



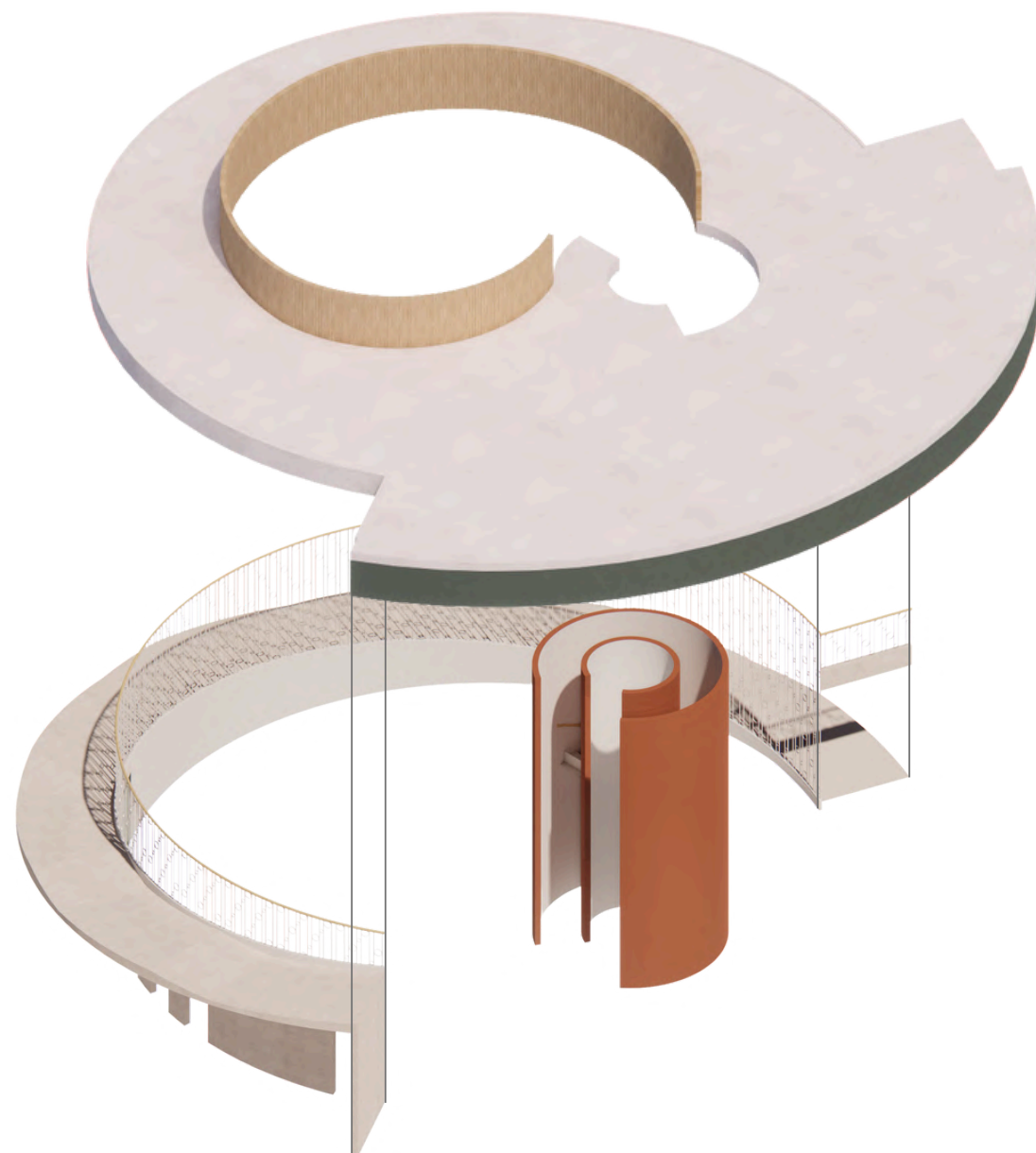
"Connecting Gaps"
"Connecting To the Roots"



Ground Floor Plan

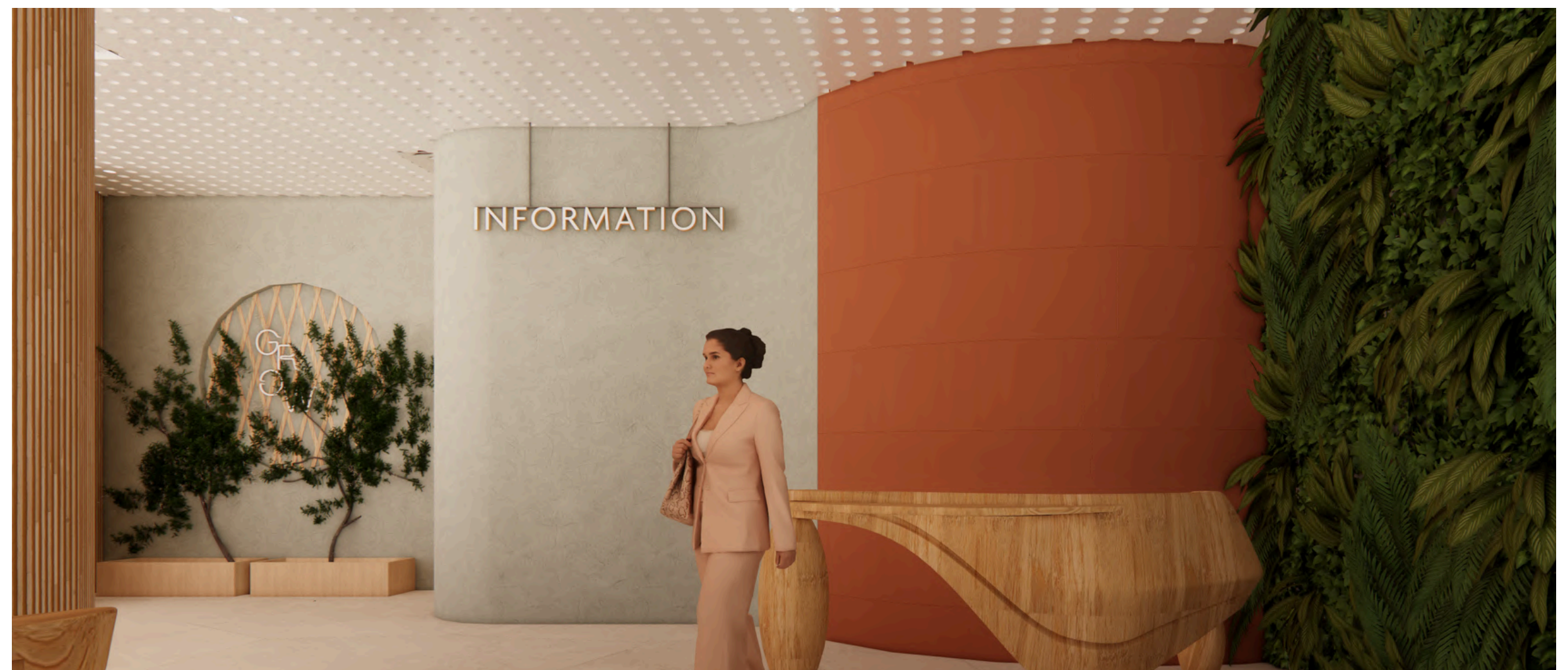
1. Main Entrance
2. Paddy farm
3. W/C
4. Lift and stairs
5. The Farming area
6. Grow room
7. Hydroponics
8. Aquaponics
9. Paddy farm 2.0
10. Fire Exit
11. Ramp

A central circular void with a ramped walkway enhances the building's form, symbolising farming's cycles while creating open connection and community interaction.



The Growdome communal area

The Growdome is an urban oasis where people can explore fun, hands-on farming methods like vertical and indoor gardening. It reconnects city life with nature, promotes healthy eating, and raises awareness about local food production and food security.



Reception

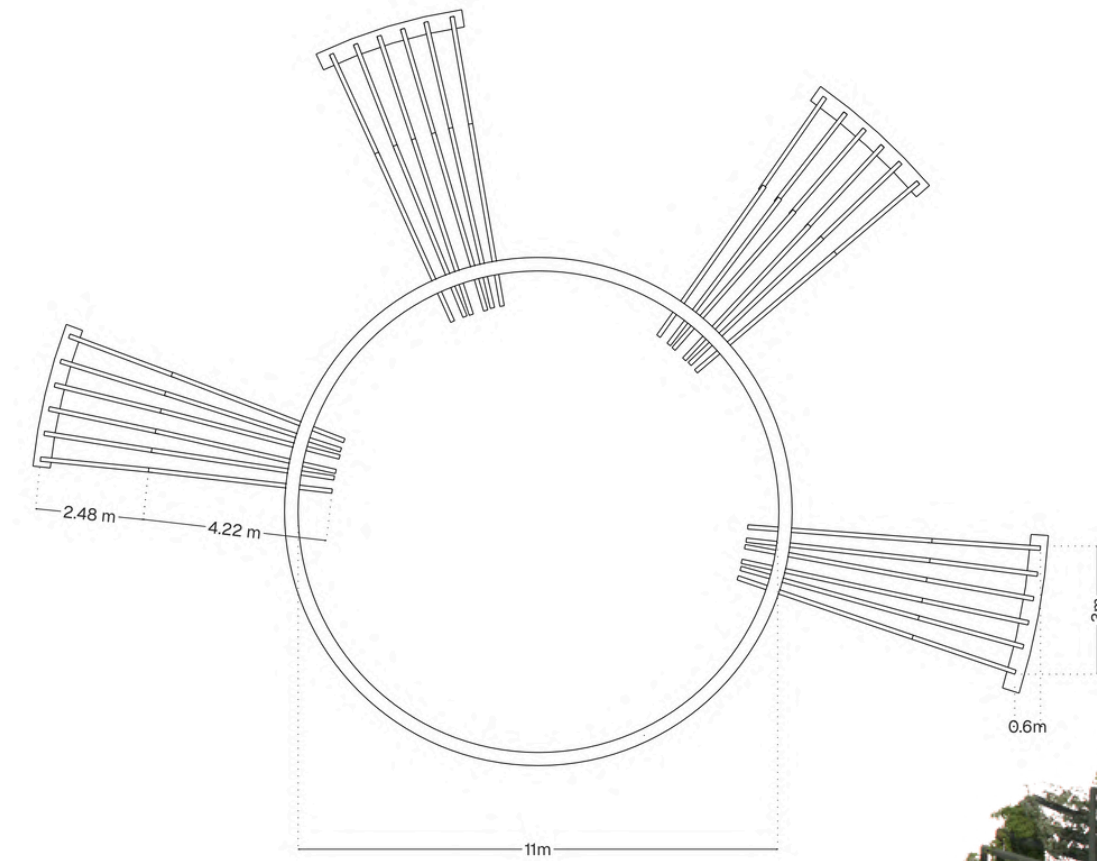


A focal area with different Farming techniques such as vertical, hydroponic, and soil-based methods offering a hands-on learning space that brings food production into the heart of the city.



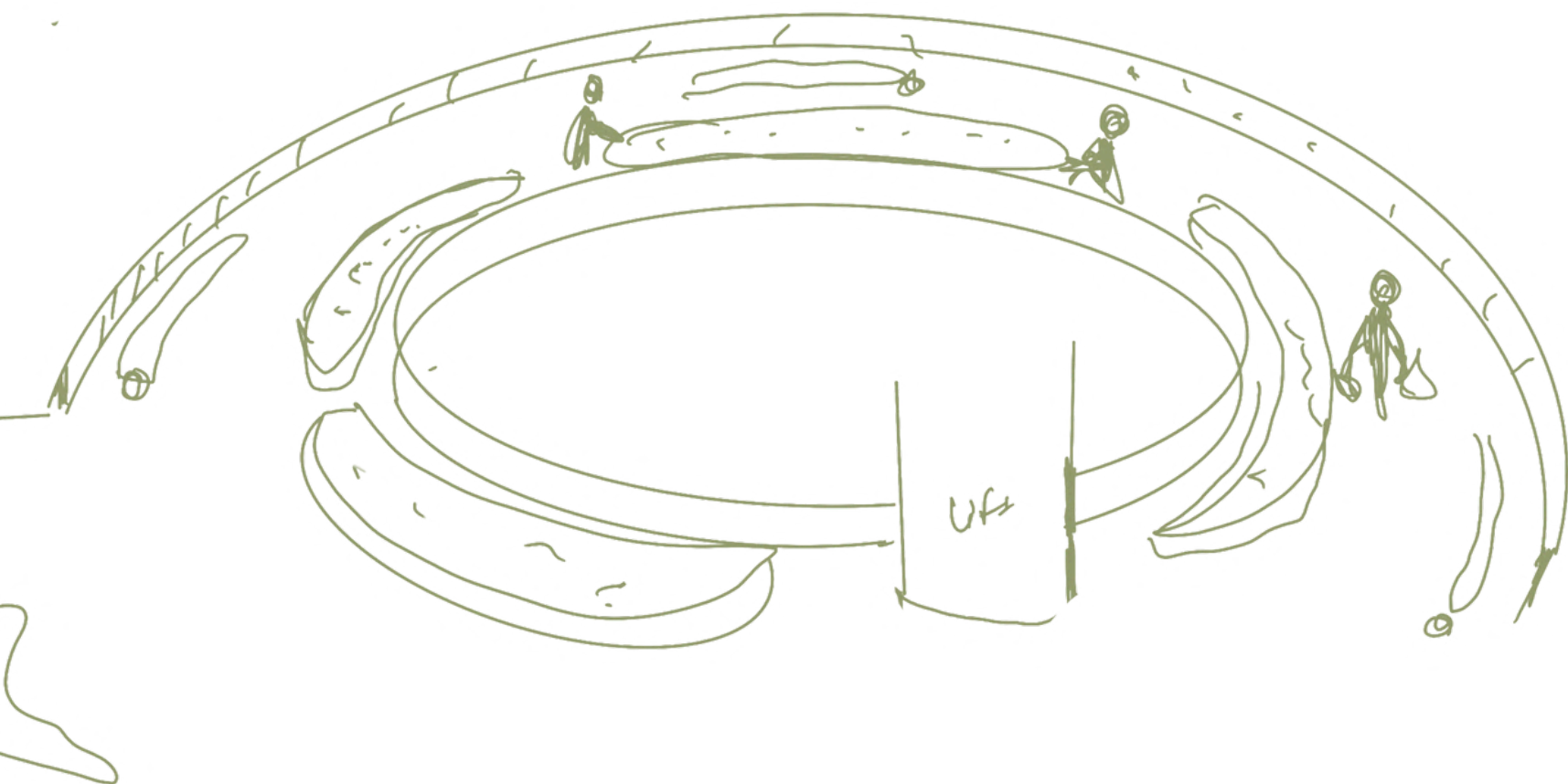
Seating

The Pave Stone seating by Kero, park-like feel to the interior for natural and informal ambiance.



Hanging plant canopy

A visual landmark and a functional trellis for Plants.



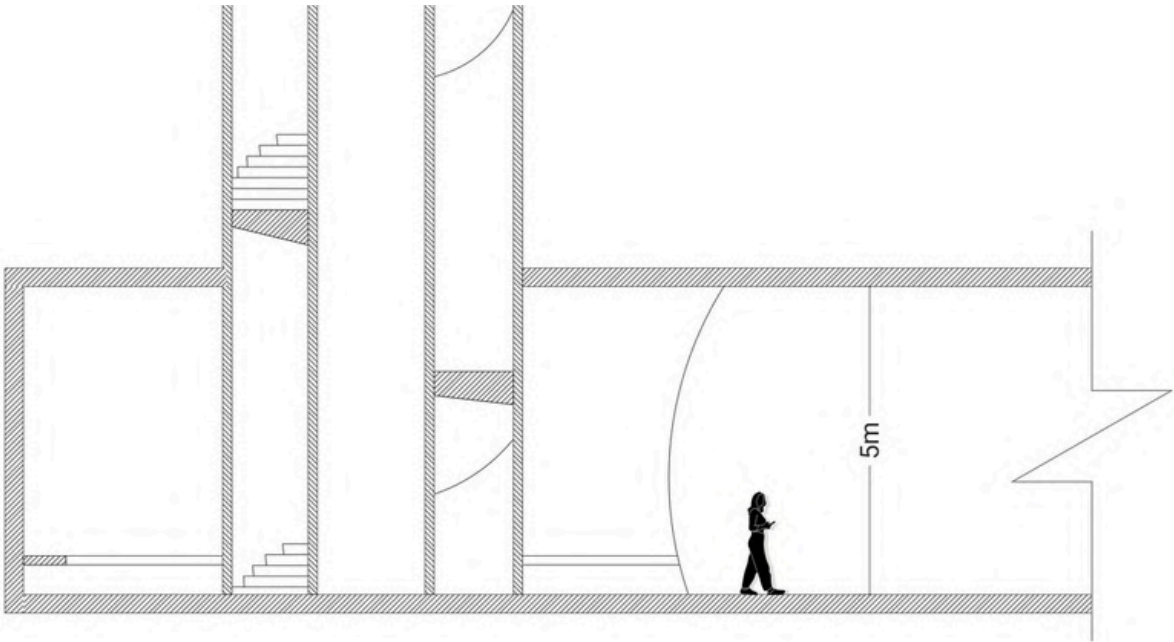
Sketch of the communal farm, circular and around the void to make it easy for communicate giving a feeling of being gathered around.

Gather Dome



Grow Dome

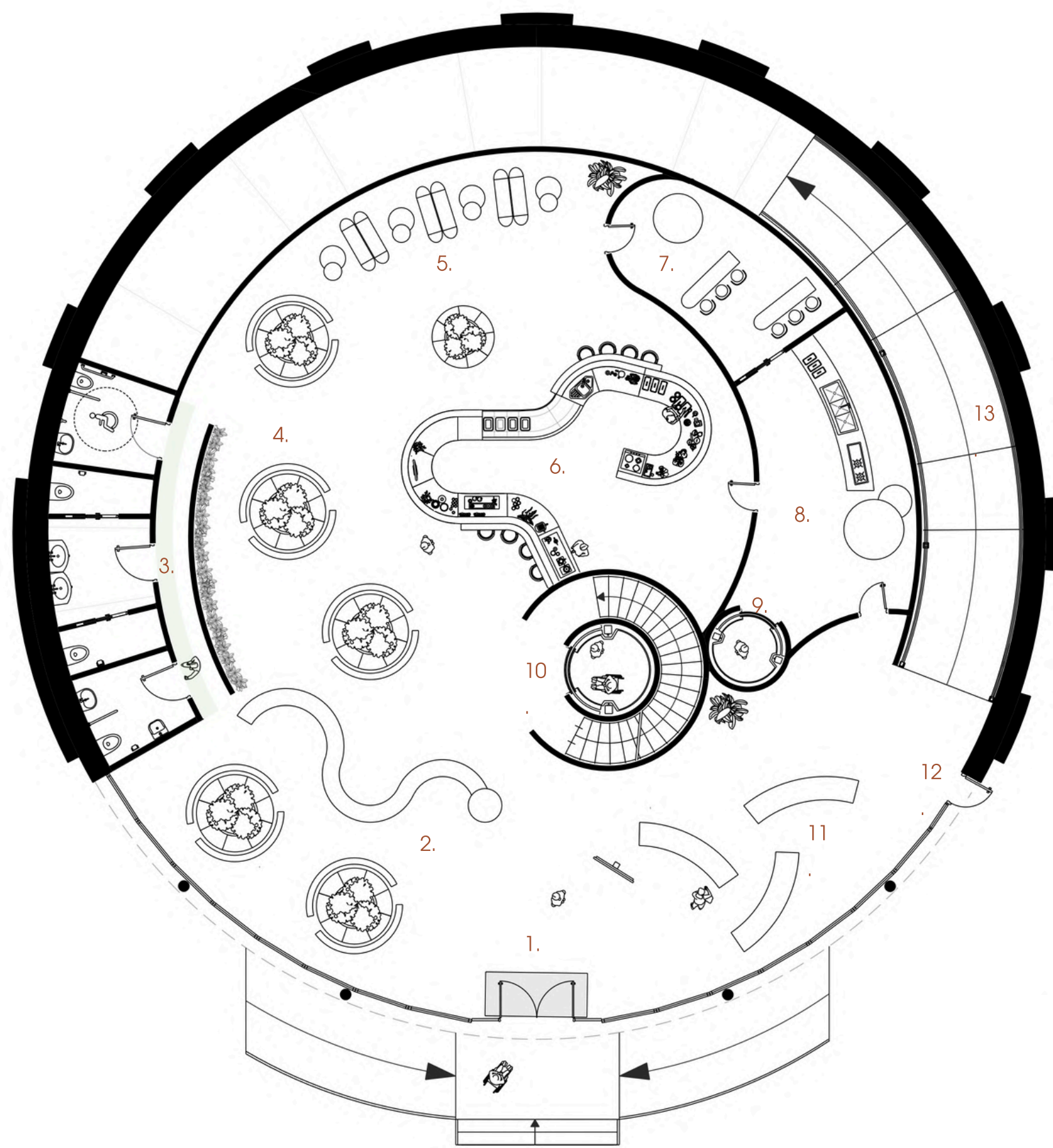
Gradual change of lighting



Please scan the QR code to see the final video of the tunnel experience.

After experiencing an intense immersion in nature within **The Tunnel journey** to the Gatherdome provides space to slow the pace as transition between nature and community.





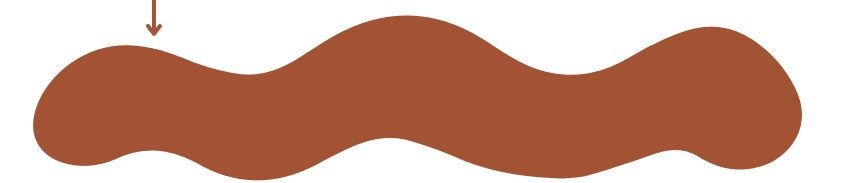
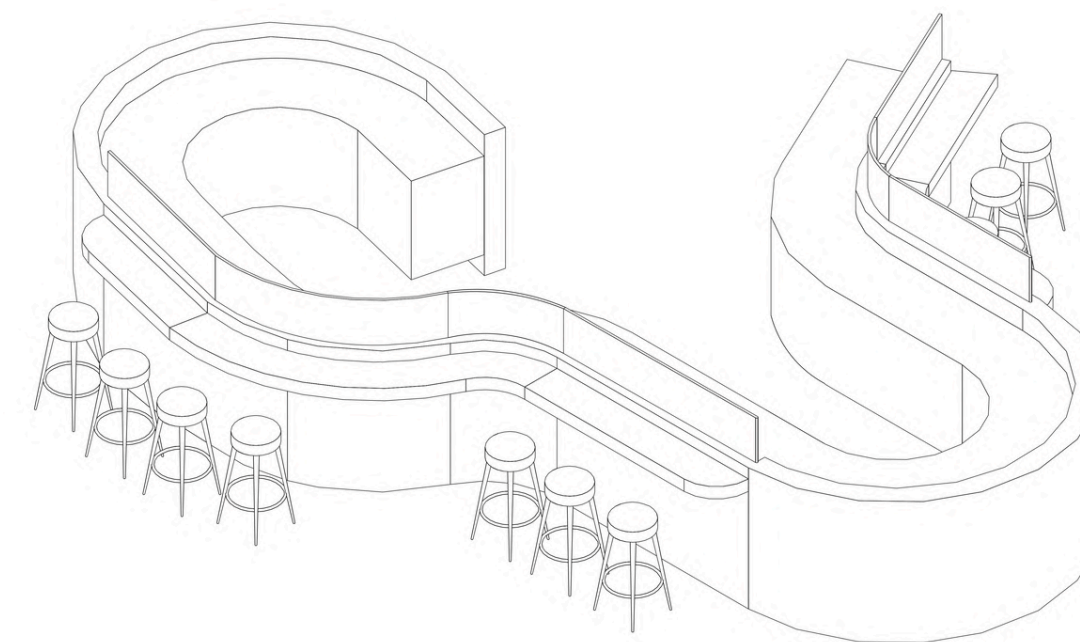
The Gatherdome is a vibrant social hub featuring kitchen, educational corners, and a small fresh produce market. It offers a complete seed-to-table experience,

Ground Floor Plan

1. Open entrance
2. Window seating area
3. W/C
4. Circular seating
5. low seating
6. Open Kitchen
7. workshop area
8. Back kitchen
9. Lifts for staffs
10. Main stairs and lift
11. Organic market
12. Fire exit
13. Ramp



The Gatherdome open informal space garden-like eating area.



Mezzanine Seating area



An open kitchen, for visitors watch food preparation, promoting transparency and learning about fresh, local ingredients and healthy cooking.

