



The Pioneer Plaza

Digital Nomads Community



Post-pandemic shifts have dramatically altered societal and work norms. From sitting in the office, to flexible work from home and even travel, digital nomads have become a lifestyle that many people desire. This revolution not only changed our work habits, but also prompted us to reconsider our values and the meaning of life. As more people bravely engage in remote work and global adventures, this inspired my project - "Pioneer Plaza", a service-oriented and multifunctional community mainly designed for digital nomads. I believe future spaces should accommodate with large emerging groups, including their needs.

Glasgow has a strong financial and industrial sector, such community not only leverage the city's advanced digital infrastructure, but also promote diversified economic and innovative growth. This community will become a hub for knowledge and creativity in Glasgow, stimulating innovation through sharing information and resources.

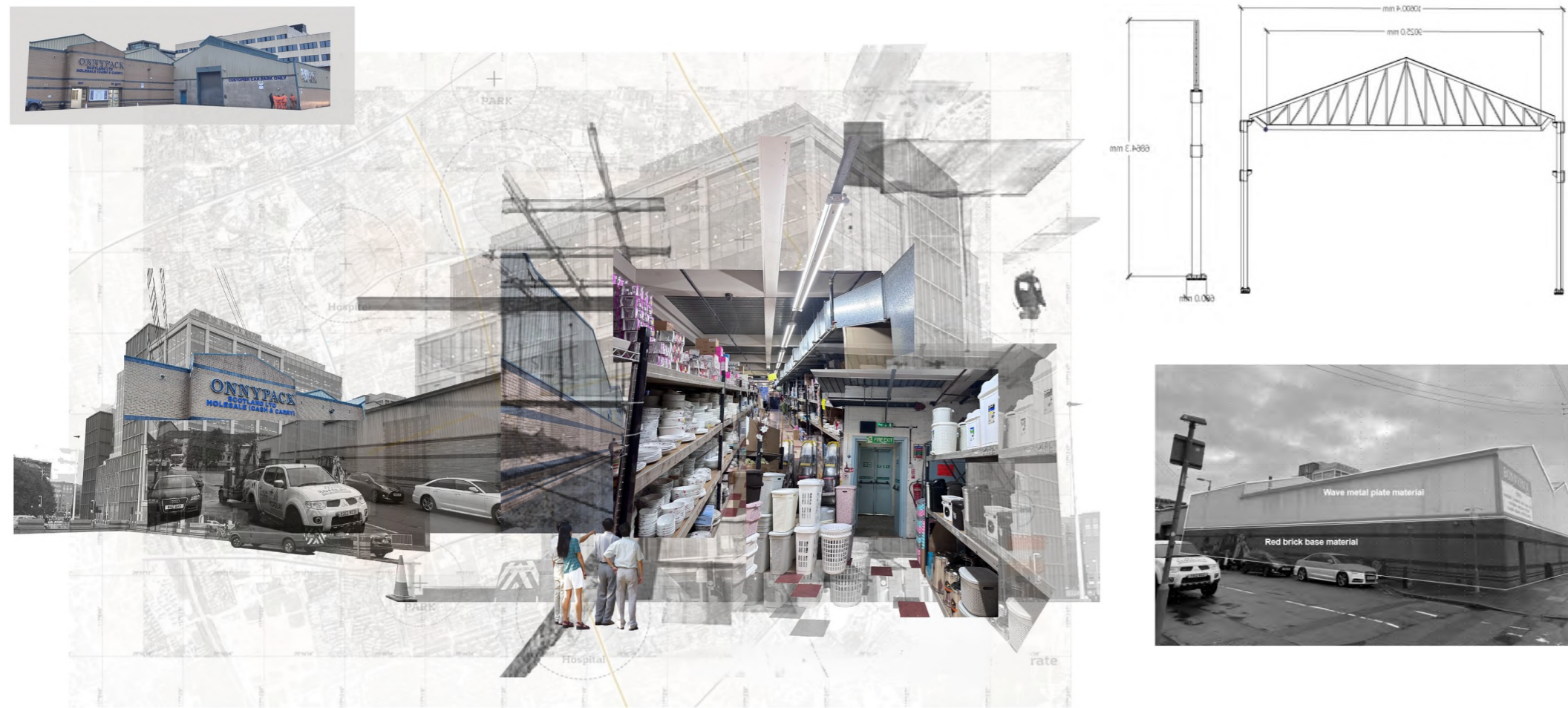
Establishing a digital nomad community creates more than just a workspace; it forms a vibrant social hub where people from various backgrounds can social, share experiences and viewpoints, to grow together. Such community serves as an incubator for knowledge and creativity and promoting both individual and communal prosperity. Here, everyone can find their place, achieve a perfect work-life balance.



Shift in Work Patterns



Original Site Analysis



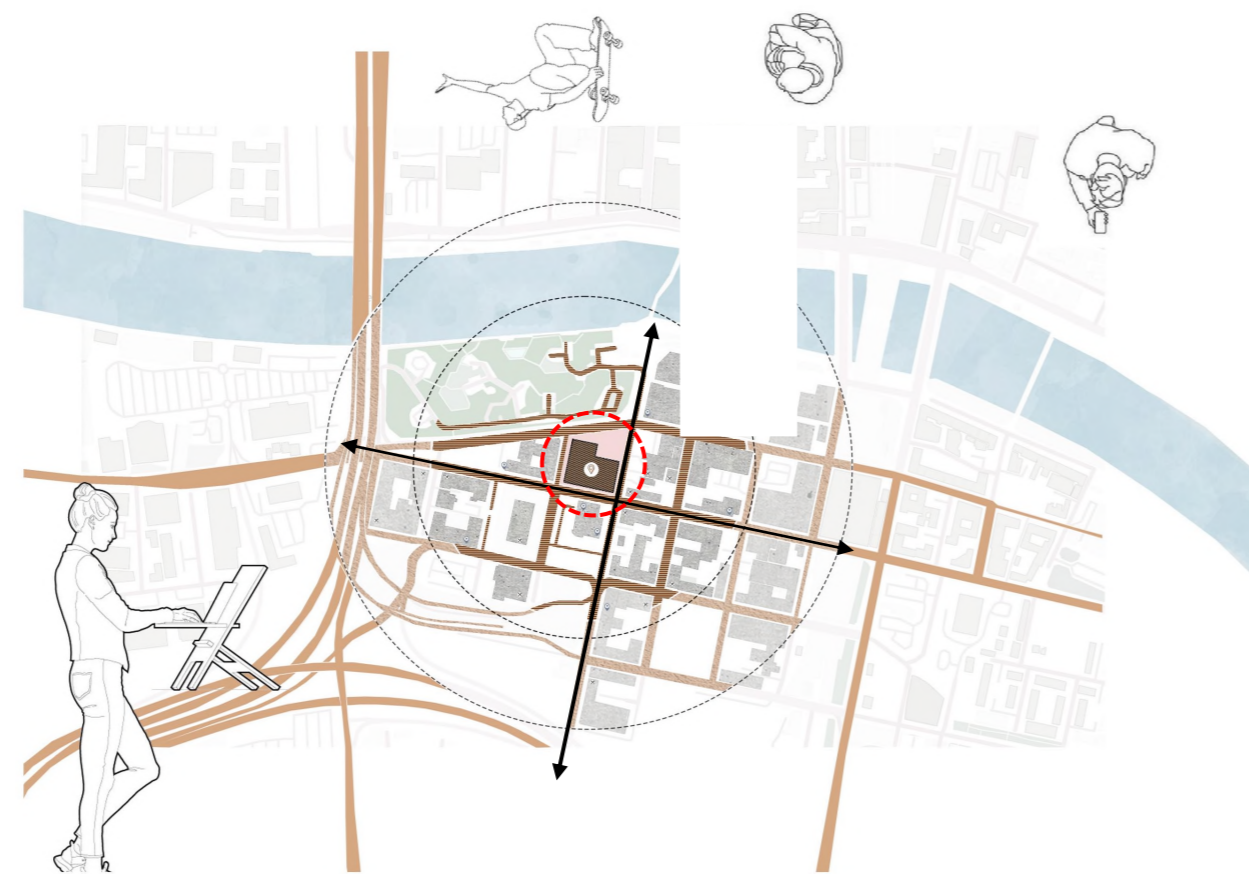
Target Audience



The primary target age group for Pioneer Plaza is 22-50 years old.

Site Analysis

Pioneer Plaza is located across the Clyde River, with convenient access to multiple major routes leading to the city centre. The multiple route such as M8 also provides easy access to other cities and sites. Most importantly, this location offers exceptional value for money. For digital nomads, accommodation costs are often the biggest expense, but due to its strategic location, Pioneer Plaza offers very affordable rates, making it an ideal choice for digital nomads.



Pioneer Plaza primarily serves individuals who identify as digital nomads, including remote workers, freelancers, and digital entrepreneurs. However, it is open to anyone seeking a flexible and collaborative work environment. The community fosters creativity, innovation, and knowledge sharing, making it an ideal hub for individuals thriving in dynamic and diverse settings.

This range is selected to cater to those who may have already established their careers, possess valuable professional knowledge, and are seeking opportunities for personal and professional growth. Nevertheless, the space remains inclusive, welcoming individuals of all ages who share a passion for remote work, entrepreneurship, and collaboration. The digital nomad community recognises the importance of diversity and inclusivity, ensuring that individuals across all age groups feel respected and supported in their pursuits.



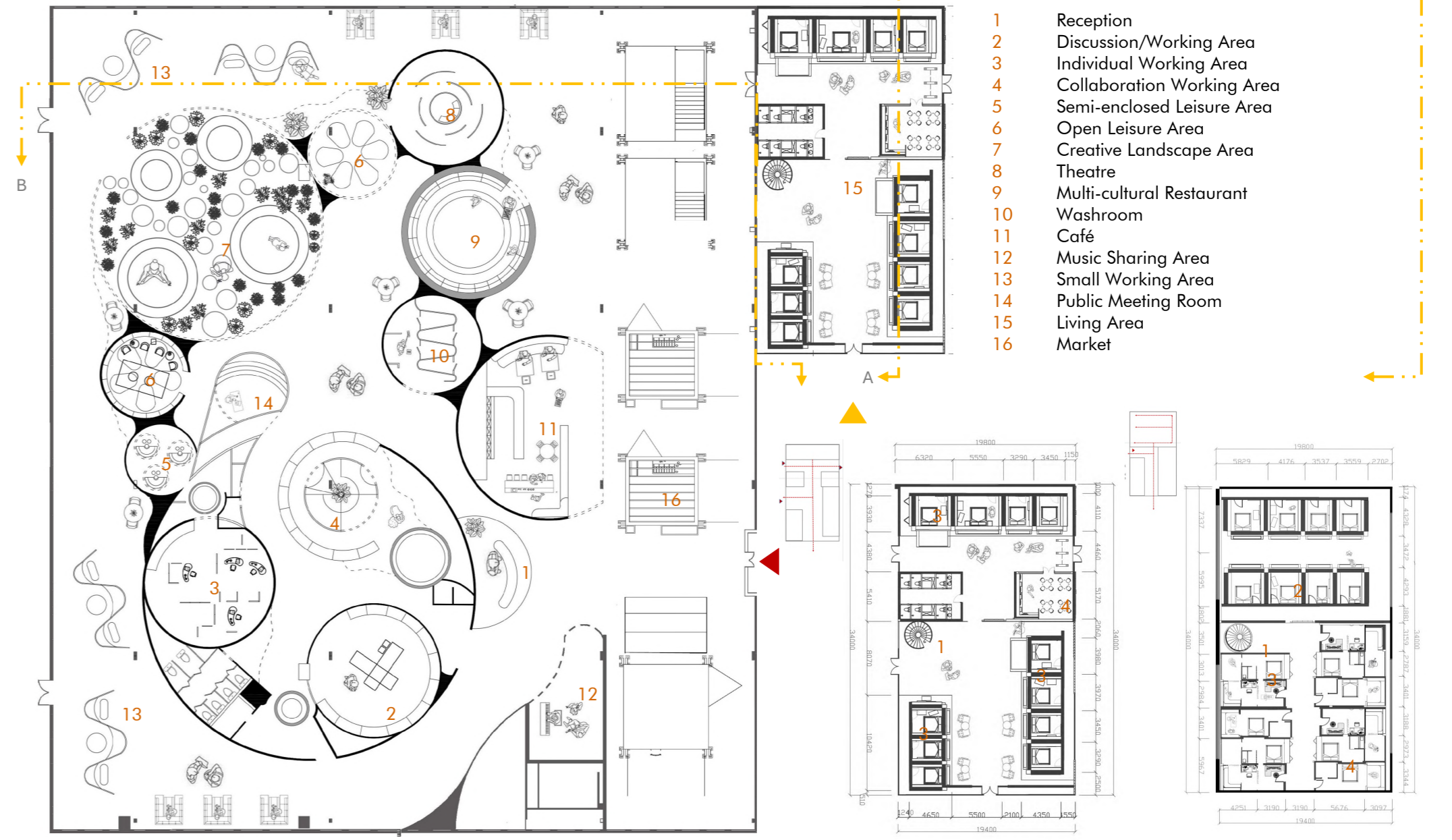
Section A - A



Section B - B



Floor Plan



- 1 Stairs
 - 2 Washroom x6
 - 3 Single Room x11
 - 4 Shared Kitchen
- 1 Stairs
 - 2 Single Room x8
 - 3 Large Single Room x4
 - 4 Suite x4

Material



The Pioneer Plaza Coffee Bar incorporates Scottish tartan elements to provide a culturally rich space for global digital nomads. Through this unique cultural experience, I aim to foster multicultural exchange and understanding, which is a crucial aspect of social transformation in future spaces.

Functions: fixed and adjustable Tabletops

The adjustable-height desks and chairs are designed to be versatile and adaptable, meeting the diverse needs of future work environments.



- Walnut Wood
- Brick
- Oak

Multicultural Restaurant

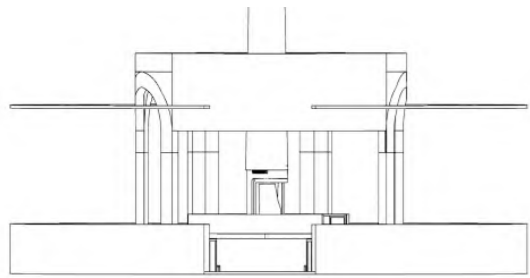


1. The multicultural restaurant not only offers quick and delicious meals but also features a rotating menu showcasing specialties from different countries each week, allowing people's taste buds to "travel the world".

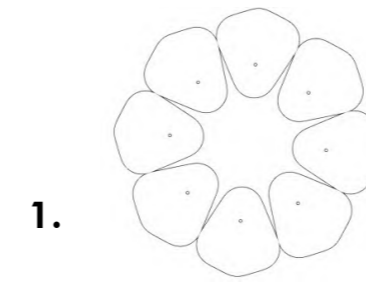
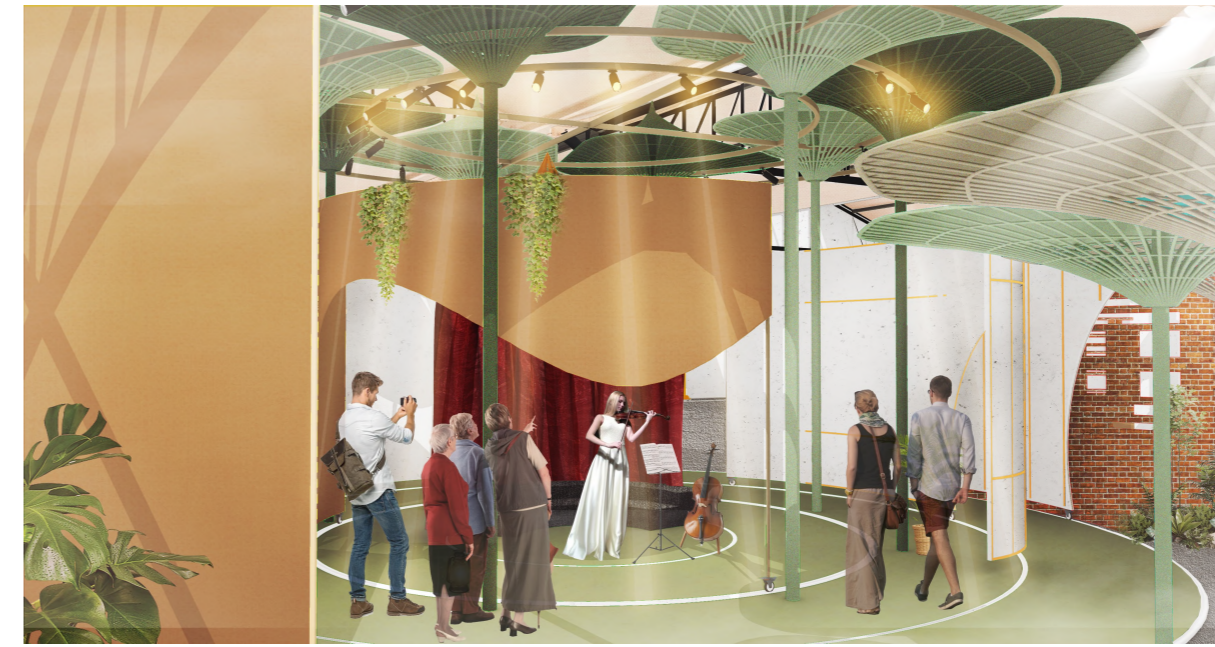
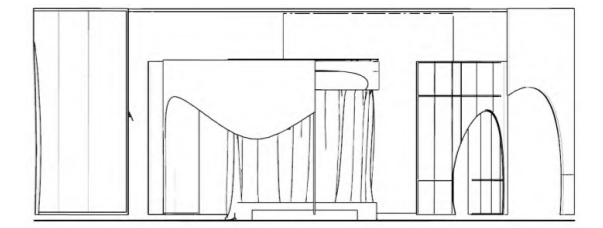
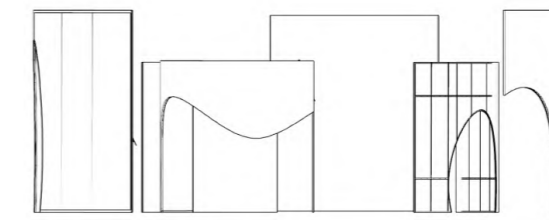
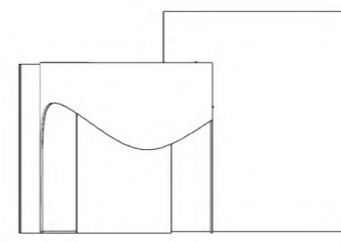


2. What makes it even more special is the interactive cooking session where, under the guidance of professional chefs, people can get hands-on experience in preparing dishes from around the globe.

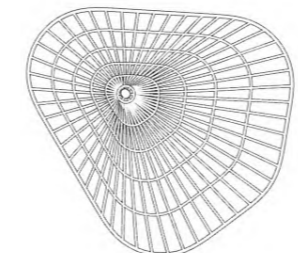
3. It's a rare opportunity for cultural exchange and social interaction. This vibrant restaurant encapsulates what I envision as a glimpse into the "future space" – a place where diverse cultures converge, fostering interactive experiences and a sense of community.



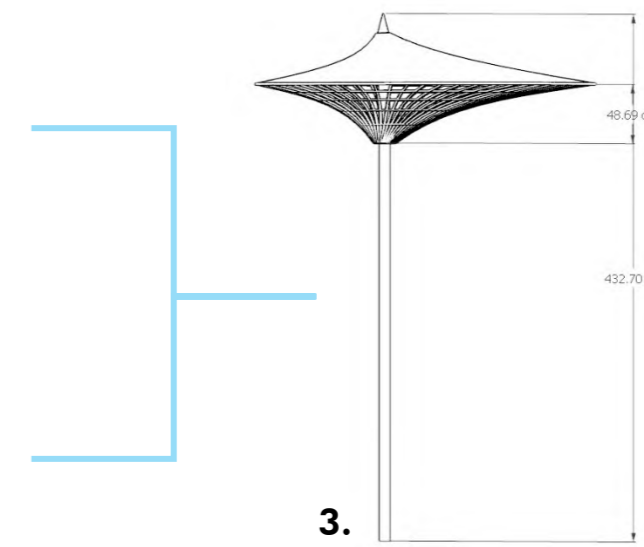
Theatre



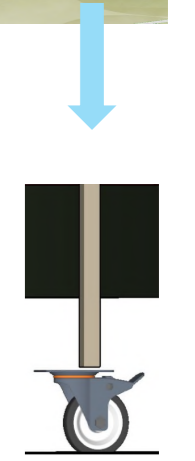
1.



2.



3.



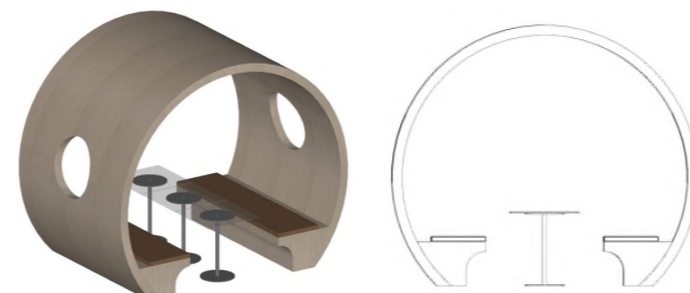
Curved Screens Pulley System

Open Leisure Area



- Group A
- Group B

Group A are fully open. While group B are semi-enclosed, people can use the curtains to freely adjust the space, providing more privacy or openness as needed.

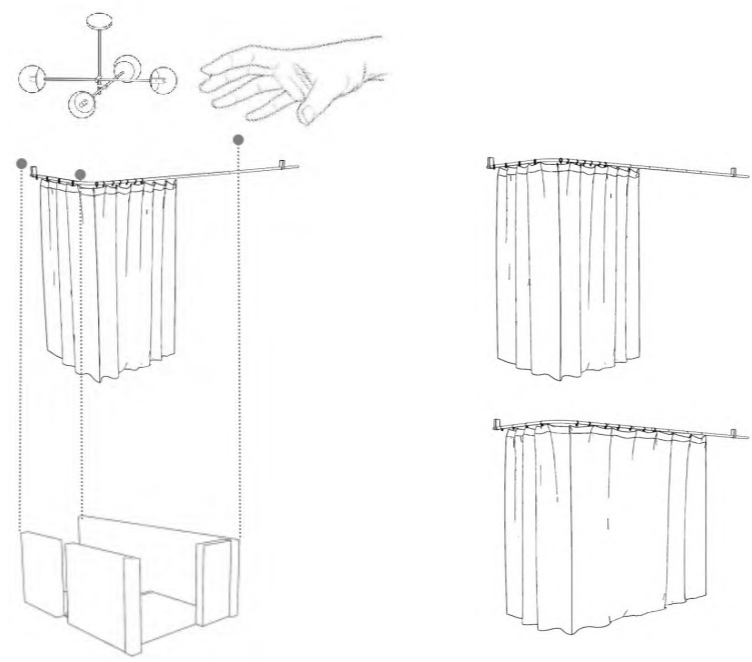


Creative landscape Leisure Space



. This space features a variety of low-allergen plants to ensure comfort for everyone. Within the greenery, I have set up small pavilions equipped with tables and chairs that provide the perfect place to relax and read. This area is essential for digital nomads as it provides a peaceful environment to relax, recharge and find inspiration in a natural setting.

Living Room

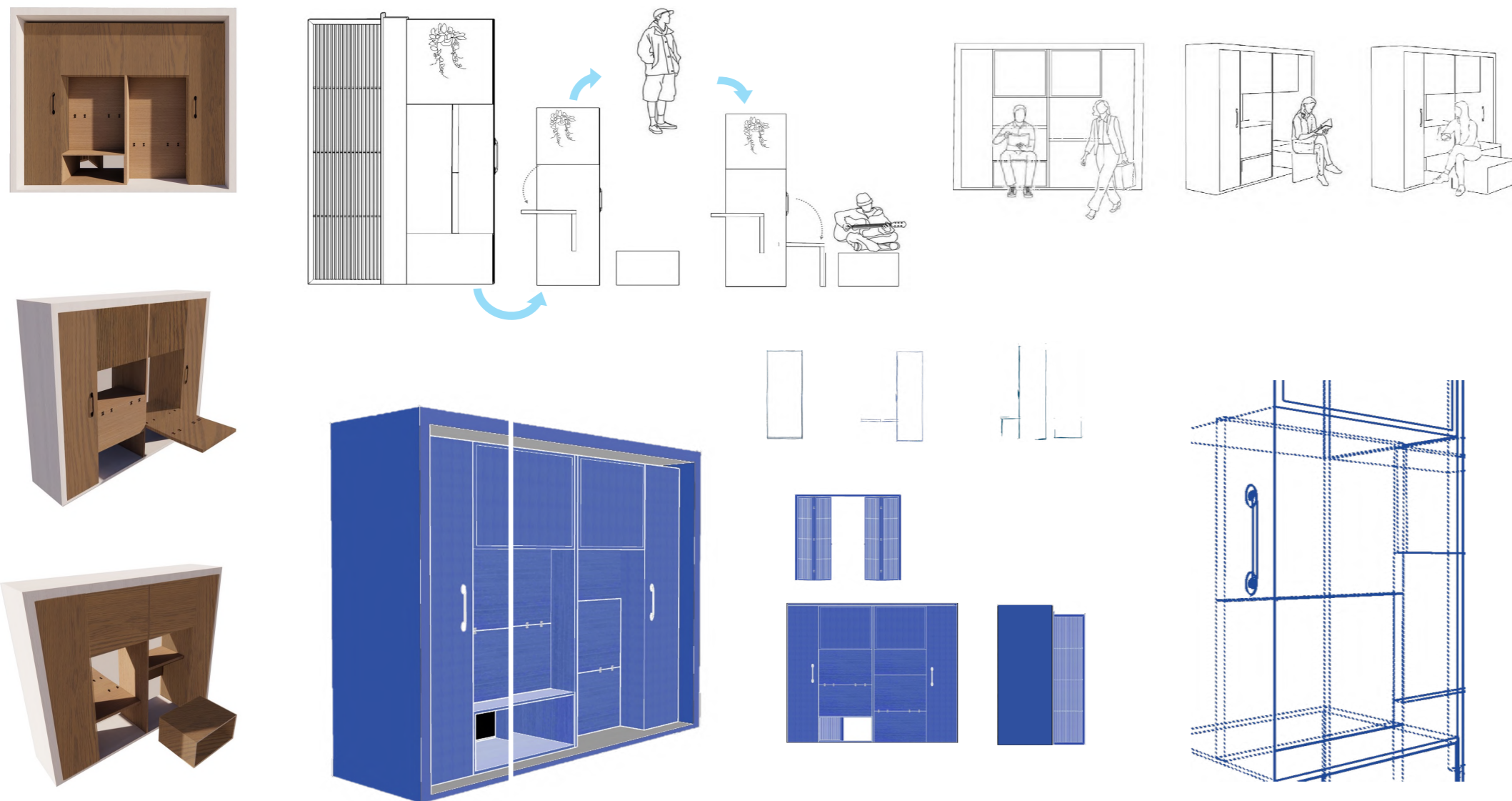


In Pioneer Plaza's living area, we've introduced an innovative concept — shared furniture. It's not just about practicality; it reflects an understanding of digital nomad lifestyles and embodies the vision of future spaces.

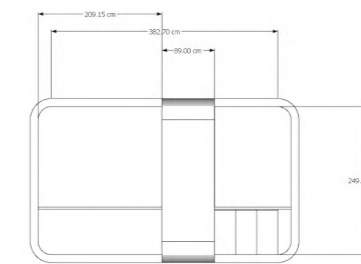
The shared closet design is all about fostering communication and interaction among digital nomads. It offers storage and workspace convenience, but its mobility encourages collaboration. Here, digital nomads can easily exchange resources and ideas, nurturing a dynamic community. This community spirit is essential for digital nomad lifestyles and aligns perfectly with the future spaces concept.



Collaboration Furniture 1.0

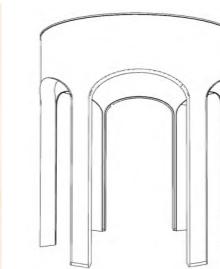
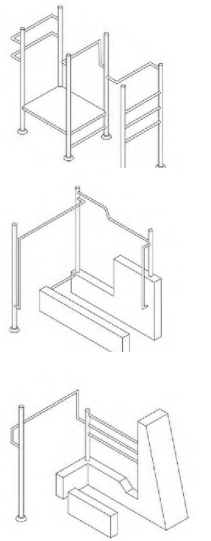


Workspaces

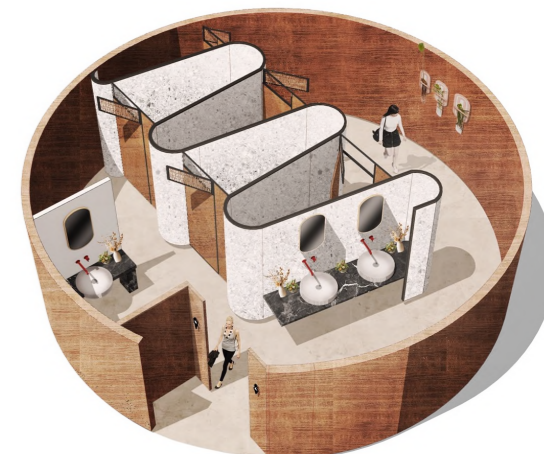


Utilising a cross-shaped design, the shared table allows individuals to engage in business discussion and networking.

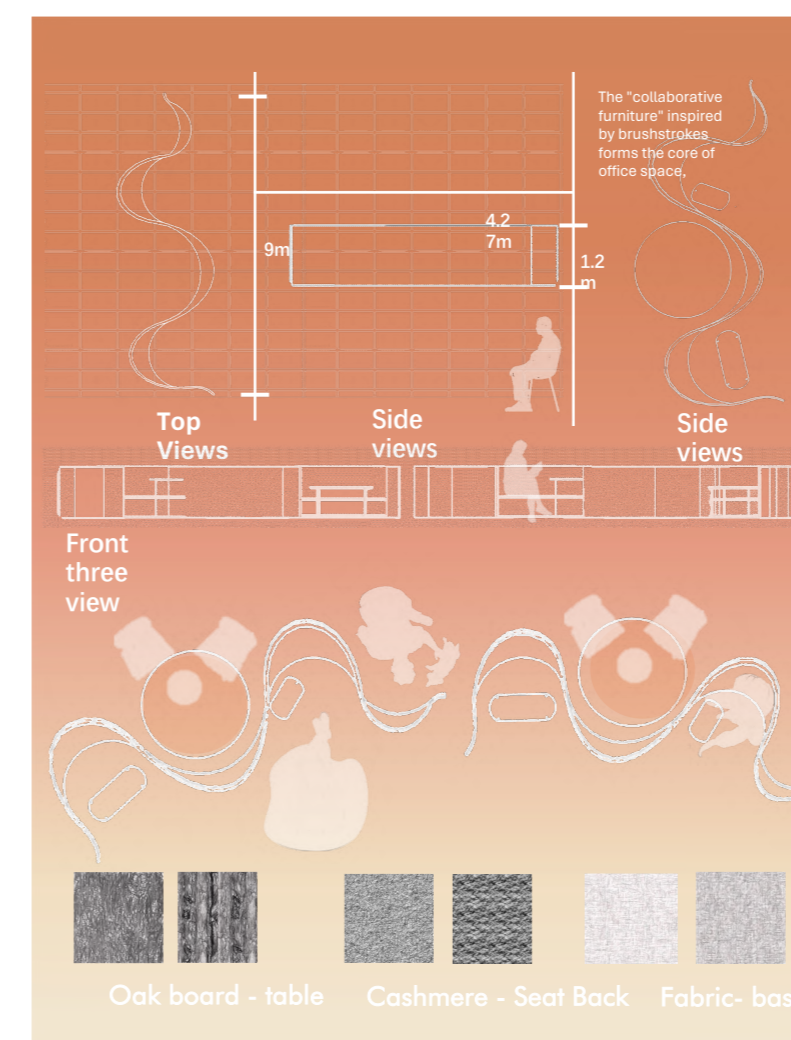
Each individual workspace is equipped with a desk and a chair, providing an individual and private working area.



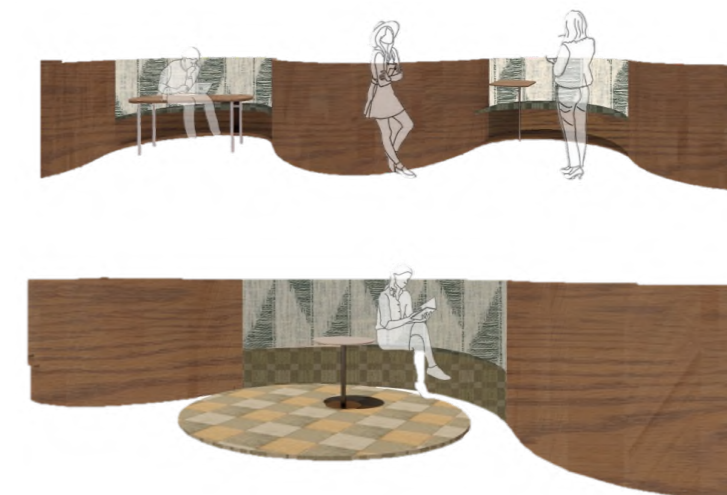
Here is the entrance to the workspace, designed with a vibrant mix of red and green to create an inspiring environment.



Collaboration Furniture 2.0



"The 'collaborative furniture 2.0,' inspired by brushwork, serves as the core element of the office space, symbolizing touch and fluidity. These pieces connect key functional areas indoors. Through daily interactions with these shared spaces, the furniture encourages users to adopt a broader perspective and thinking."



In the vision of future spaces, I believe that cooperation and interaction are key drivers of social development and innovation. The design of shared furniture perfectly aligns with this vision, emphasizing collaboration and interaction within the digital nomad community while providing a tangible example for the construction of future spaces."