

# INTRODUCING DRESSING ROOMS

Dressing Rooms is an accessible & inclusive queer social venue made up of a café/bar, events hall, and nightclub. The space is located in the Merchant City area of Glasgow, forming part of the city's queer neighbourhood.

## LOCATION PLAN:



48 PARNIE STREET, GLASGOW, G1 5LS

The venue is created within part of a current theatre and former church (the Tron Theatre). The venue's name, Dressing Rooms, comes from the building's use as a theatre, with the Vestry Nightclub taking its name in reference to the former use as a church.

A key priority when creating Dressings rooms was to create an accessible atmosphere for everyone.

This is accomplished through the physical space with level access to all areas of the venue, lowered counters at every service point, and wheelchair-wide access to all spaces. There is also a quiet room available for anyone feeling overwhelmed or experiencing sensory overload to take a breath and relax in a calm atmosphere.

Inclusivity is also created through the services provided - holding a range of events for under-represented groups and high-level training for all staff on how to support all patrons and deal with harassment. There's also a specific alcohol-second attitude for the venue, to ensure that no one is pressured to drink to enjoy themselves.

Within the venue, the three separate areas come together to create a welcoming space to socialise and be happy.

# EAT, DRINK, DANCE & BE GAY



**DRESSING ROOMS**

ANTH IOANNIDES  
THE GLASGOW SCHOOL OF ART  
anthioannides.co.uk

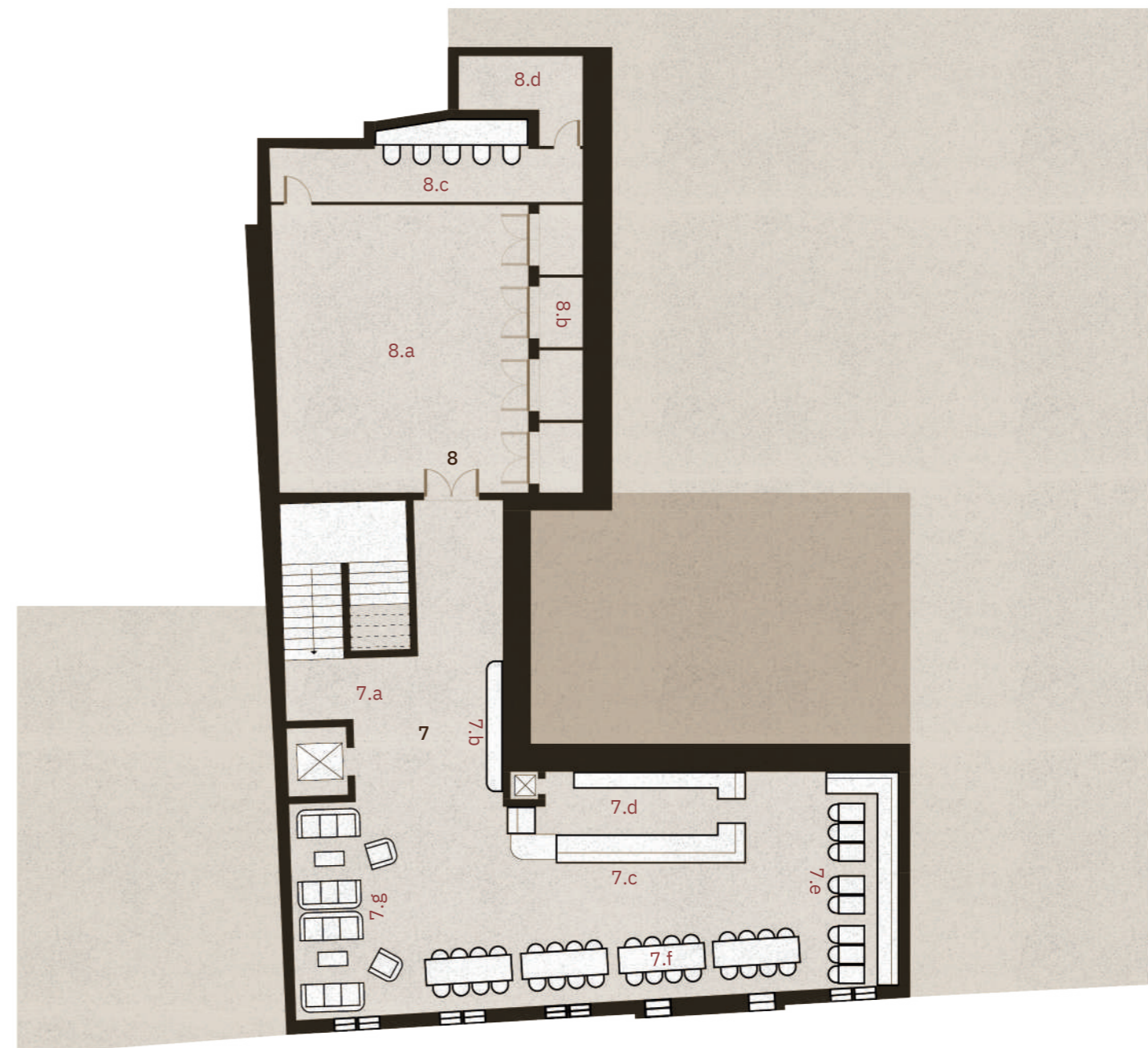
7.c First Floor Bar Elevation - 1:25







Ground Floor Plan - 1:200  
 0 1 2 3 4 5 10 metres



First Floor Plan - 1:200  
 0 1 2 3 4 5 10 metres

# VENUE FLOOR PLANS

ANTH IOANNIDES  
 THE GLASGOW SCHOOL OF ART  
[anthioannides.co.uk](http://anthioannides.co.uk)

## 1- MAIN ENTRANCE

- 2- FOYER**  
 2.a- Cloak Room  
 2.b- Quiet Room  
 2.c- Stairs / Lift

## 3- VESTRY NIGHTCLUB ENTRANCE

- 3.a- Club Bar  
 3.b- Seating Area  
 3.c- DJ Booth

## 4- TOILETS ENTRANCE

- 4.a- Standard Cubicle  
 4.b- Disabled Access Cubicle  
 4.c- Lowered Service Cubicle  
 4.d- Changing Facilities  
 4.e- Seating / Washing Area

## 5- STAFF ENTRANCE

## 6- STAFF BACK OF HOUSE

- 6.a- Site Office  
 6.b- Cellar  
 6.c- Staff Room  
 6.d- Kitchen  
 6.e- Storage

## 7- BAR ENTRANCE

- 7.a- Stairs / Lift  
 7.b- Standing Area  
 7.c- Bar Service Area  
 7.d- Bar  
 7.e- Banquette Seating  
 7.f- Social Dining  
 7.g- Comfy Seating Area

## 8- EVENTS HALL ENTRANCE

- 8.a- Main Hall  
 8.b- Storage  
 8.c- Dressing Room  
 8.d- Tech Room



# FIRST FLOOR CAFÉ/BAR & EVENTS HALL



7.e Bar Seating Area



7.b Events Waiting Area

Upstairs at Dressing Rooms houses the café/bar and events hall.

During the day the café/bar acts as a meeting point for members of the LGBTQ+ communities and their friends. The space allows everyone to relax, eat/drink, and socialise - and with a mellow atmosphere there's also the opportunity to bring a laptop and grab a coffee to do some work.

As the evening progresses, coffees switch to cock/mocktails and the atmosphere livens. It still remains quiet enough to chat and giggle and bright enough to clearly see one another. This ensures that everyone in the venue can socialise together happily.

The events hall hosts a wide range of events for members of the communities. It has a dynamic layout making it perfect a wide range of events from lectures and meetings to performances and cabarets. With its large neutral aesthetic the space allows for anyone to host their own events and make the room their own.

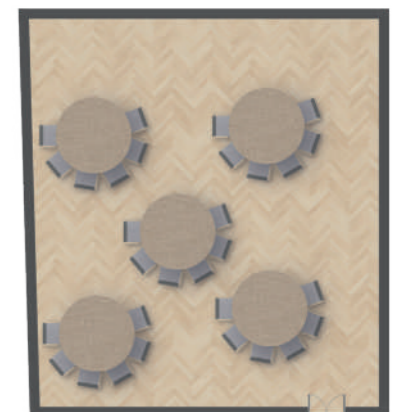
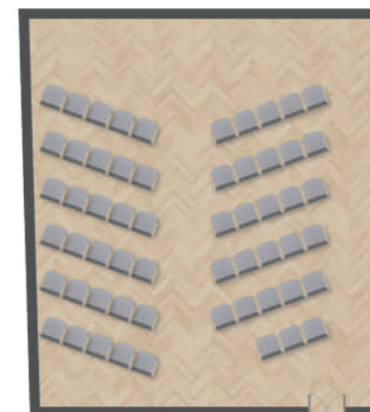
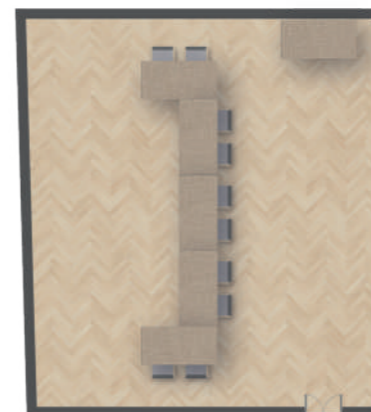
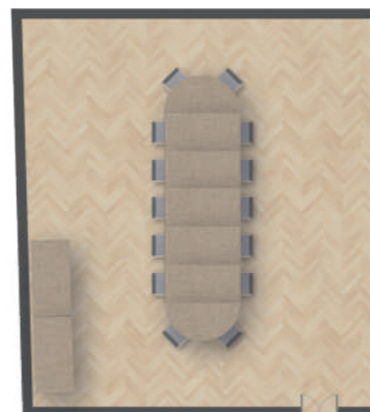


8.a Empty Events Hall



8.a Lecture Event

## POSSIBLE ROOM LAYOUTS



**DRESSING  
ROOMS**

ANTH IOANNIDES  
THE GLASGOW SCHOOL OF ART  
[anthioannides.co.uk](http://anthioannides.co.uk)



# TOILETS

The toilets at Dressing Rooms are designed to be inclusive, accessible and gender-neutral. To achieve this, they take a privacy-first approach, using direct-access toilets to allow everyone complete privacy from other toilet-users.

Each cubicle has solid walls and a solid door and houses a toilet, wash basin, and other essential facilities (such as menstrual hygiene). The cubicles sit around the edge

of the room surrounding a central wash & groom station. This maintains a social element to the toilets which is desirable in a social venue so folk can sit and wait for their friends, or gossip and adjust their makeup.

There are 12 standard cubicles, 2 wheelchair-accessible cubicles, 1 lowered-access cubicle, and a private changing facility adjustable for children or adults.

This wide range of facilities allows anyone to socialise at the venue without worrying about whether they'll be able to relieve themselves.



4.e Day Time Toilets



4.e Night Time Toilets



4.a Standard Cubicle



**DRESSING ROOMS**

ANTH IOANNIDES  
THE GLASGOW SCHOOL OF ART  
[anthioannides.co.uk/toilets](http://anthioannides.co.uk/toilets)

CUBICLE TYPES:



ACCESSIBLE TOILET



STANDARD TOILET



LOWERED TOILET



CHANGING FACILITIES



Vestry is the nightclub found on the ground floor at Dressing Rooms. Open from 10pm to 3am 5 nights a week, Vestry is the perfect place to dance, wiggle and blow off steam.

The space takes on an ecclesiastical approach to its design, with a large pulpit inspired DJ booth at the focal point likening the DJ to a sacred figure of the club scene. The pulpit sits on a hydraulic lift moving it up and down and has an adjustable workstation inside, allowing anyone to be the DJ at Dressing Rooms.

When club-goers need a break from the intense atmosphere, they have the venue foyer, outside, and the quiet room available to them to recover. The club itself has a large dance floor, small seating area, and full-size bar for any refreshment needs (lowered counter included). There's also the option to set aside a seated viewing area for any DJ nights or live events in this space



3.c Vestry DJ Booth



2. Venue Foyer



THIS ROOM'S  
MADE FOR  
DANCIN'



3. Dance Floor



3.b Seating Area

vestry  
NIGHTCLUB

ANTH IOANNIDES  
THE GLASGOW SCHOOL OF ART  
anthioannides.co.uk