



## A Journey Through Jazz: A Global Music Experience

This project takes visitors on a journey through the evolution of jazz music and its global impact. It highlights key values seen in jazz, illustrating its role in cultural exchange, expression and connection, which is my primary focus for the spaces. I aim to create multicultural environments that promotes connections through jazz music and its ambiance. The layout will allow visitors to explore different floors, each representing various influential locations in the globalisation and development of jazz, focusing on nightlife and jazz venues from around the world, transporting them across eras and promoting cultural exchange. My design concepts prioritise a warm, inviting atmosphere with open areas that encourage social interaction. I'll incorporate spaces for both calm reflection and energetic engagement, along with private and public areas to ensure comfort for all. Lighting will be a key feature, inspired by the dim, warm glow typical of jazz venues, using both original and modern approaches. Each area will reflect the jazz era, blending contemporary elements while preserving the unique, soulful, and intimate vibe of a jazz venue.

My design choices including layouts, fluidity of the space, representation of heritage, materials, furnitures, lighting and details and journey relate to the Design Principles:

- Connection: Open layouts and shared spaces that promote social interaction
- Expression: Platforms for creative engagement through performance and art
- Curiosity: Diverse atmospheres to encourage cultural exploration
- Intimacy: Warm lighting and thoughtful layouts for comfort and atmosphere
- Experience: Design that transports visitors across cultures and histories

### Target Audience:

- Musicians seeking creative collaboration
- Young professionals interested in culture and socialising
- International visitors eager for authentic local engagement
- Jazz lovers looking for an inspiring, welcoming space



**Langside Hall**  
1:50 model  
Using Mdf to lasercut my drawn elevations and floor plans, with 3d printed furnitures. This model gives a sense of the space and journey around the building.



### Second Floor - Artist Hub

#### Creative Space for Musicians

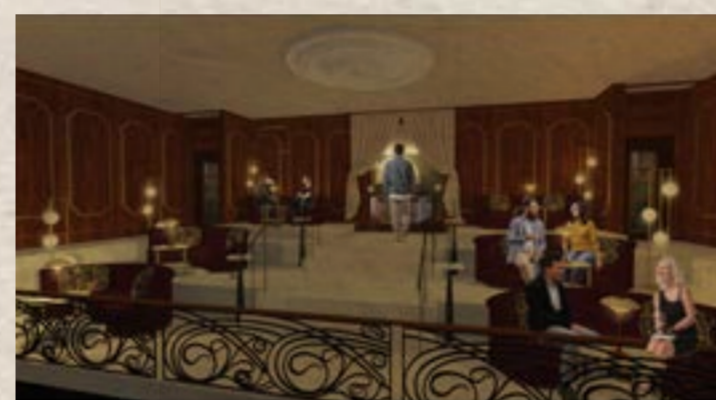
The top floor is a dedicated hub for musicians, promoting community engagement, focused on collaboration, rehearsal, and creative exploration. It features a jam room, recording studio, listening lounge, and screening room—all soundproofed and designed for comfort and acoustic quality. Blending global design influences from across the venue, this space reflects jazz's multicultural roots and evolution. By supporting the creative process behind the performance, it transforms the venue into an active part of the jazz community and culture.



### First Floor - The Terrace

#### Cuban Rhythm & Social Energy

Inspired by the vibrant spirit of Cuban jazz, the upper floor centers around a lively dance floor and adjoining bar that encourage movement and social connection. The open, fluid layout, enhanced by tropical greenery, echoes the indoor-outdoor feel of Cuban architecture. This floor highlights the importance of lighting, using an amber-orange light to casts a warm, sunlit glow, creating an intimate yet energetic atmosphere.



### Mezzanine Floor - The Parisian Balcony

#### Parisian Elegance & Creative Expression

Inspired by 1920s Paris, the mezzanine blends Art Deco elegance with the creative spirit of the era's jazz salons and cabarets. This floor is a good example of the use of patterns, materials, and lighting to transport the visitors and highlight the era and place of the design. Demonstrates a key point of creating social spaces with intimate atmospheres. Celebrates artistic expression seen through jazz music, with an interactive installation.



- Second Floor - Artist Collaboration Space**  
jam room  
listening room  
screening room  
music studio
- First Floor - Cuban groove**  
Piano bar  
dance space  
lounge seating
- Mezzanine Floor - Parisian Balcony**  
dotted seating  
bar area  
art installation
- Ground Floor - The Big Easy Jazz Room**  
Rusted bar/patino  
bar feature  
stage  
lounge seating  
green rooms  
lounge bar
- Basement Floor - Jazz Hideaway**  
performance seating  
stage  
bar lounge  
sake tasting bar  
dining area  
kitchen

Floor plan Scale 1:75



### Ground Floor - The Big Easy Jazz Room

#### The Welcome and Performance Space

As the main point of entry, the ground floor sets the tone for the entire experience. I designed a visually rich, double-height performance hall inspired by the grandeur of early New Orleans jazz venues to create an immediate sense of atmosphere and presence. This space shows the importance of spatial arrangements, promoting communal spirit and a welcoming atmosphere. Using design to reflect historical elements. Despite its openness, intimacy is shown through strategic seating and ambient lighting, echoing the mood of traditional jazz clubs. The result is an elegant yet comfortable space that celebrates jazz's multicultural roots and encourages social connection.



### Basement Floor - The Jazz Hideaway

#### Tokyo-Inspired Nightlife & Dining

The basement offers an intimate, immersive experience inspired by Tokyo's jazz kissas and izakayas, blending music, dining, and social interaction. The design focuses on balancing privacy and connection, and reflecting the communal spirit of izakaya culture. A key part of this design echoes Japan's fusion of tradition and modernity. Low ceilings and dim red lighting create a speakeasy-like atmosphere, enhancing the sense of intimacy and discovery.



### Bespoke Details & Historic Inspiration

The Telling Room's design draws from its origins as the National Bank of Scotland, reinterpreting historic elements like stained glass, ornate ceilings, and marble-based pilasters. Features such as the bronze-green entrance door inspired green wood panels with bronze accents, while stained glass and bronze details throughout subtly honor the building's heritage within a modern context.

# Ornament and Origin

## The Teller

At the core of the jazz venue is a striking, sculptural centerpiece that blends traditional Scottish plasterwork with New Orleans-inspired wrought iron. This feature reimagines both materials in bold, contemporary ways. Plasterwork, typically used for decorative ceilings and walls, is transformed into a theatrical, large-scale installation, while wrought iron takes on a fluid, expressive form influenced by Art Nouveau and jazz's improvisational spirit. Merging historical craftsmanship with modern innovation, the piece becomes a dynamic symbol of jazz, rooted in tradition, yet boundary-pushing, offering an immersive architectural experience that captures the music's energy, emotion, and artistry.

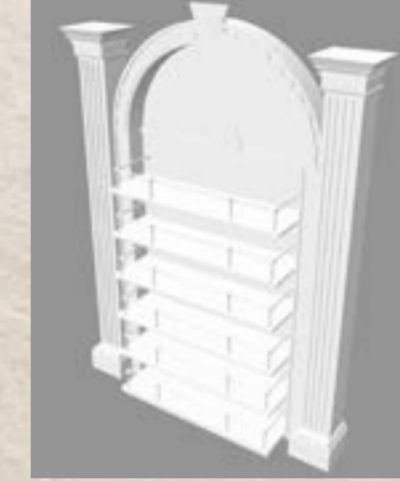
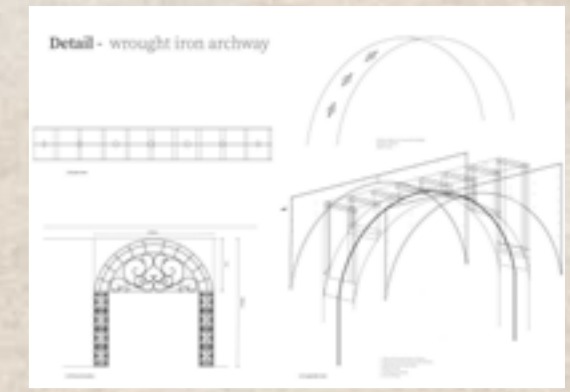
## The process



1. Sketches of my design development, incorporating intricate plasterwork and wrought iron through Bar Design.
2. I took the white 3D printed shape and painted the lower section to reflect a brass colour. I cut small slips of tile which were then stuck around the bar to reflect the mirrored panels. Finally I was able to find marble effect laminate and cut sections to cover the bar top.
3. Through sketches and trial and error, I created the back bar and dome feature on Vectorworks which allowed me to 3d print at a 1:20 scale.
4. The construction began with assembling an aluminum frame by fitting and gluing tubing around a flat, bendable ring to form a circular shape. Intricate shapes were crafted from 2mm copper wire, bent freehand with pliers, then soldered into four sections using a blowtorch. These sections were curved to match the frame and attached by drilling small holes and using glue. To achieve an ironwork look, the entire structure was spray-painted black and secured to a base for added strength.
5. The seat was constructed by cutting an aluminum frame by fitting and gluing tubing around a flat, bendable ring to form a circular shape. Intricate shapes were crafted from 2mm copper wire, bent freehand with pliers, then soldered into four sections using a blowtorch. These sections were curved to match the frame and attached by drilling small holes and using glue. To achieve an ironwork look, the entire structure was spray-painted black and secured to a base for added strength.
6. I bent some of the leftover aluminium so that it sat inside the metal frame and then cut two pieces of card to clamp the wires to the top of the dome. I then painted the aluminium to match the ironwork frame.

## Final Detail Model

Placed on a mirrored surface to allow a clear view of the dome.



## Design Inspiration

Each feature of the bar area has been thoughtfully designed, using my research of the chosen building's heritage, Scottish plasterwork, ironwork through New Orleans, and 1920s jazz age. Taking design inspiration from the original sandstone engravings and details to create a detailed theatrical back bar. The dome feature links to ceiling roses but also the original use of the building (a national bank) known for its grander ceiling feature dominating the room. The ironwork creates a visually striking centerpiece that links to the traditional craftsmanship of New Orleans, playing with light, and shadow with flowing lines representing the elements of expression and artistry in jazz music. Functionally, the feature enhances spatial organization, improves circulation, and maintains openness by allowing air and light to flow through. The circular bar and stool seats represent the design styles seen through the 1920s New Orleans.

## Technical detail, ironwork archway - First Floor

The decorative ironwork archway I designed with meticulous detail, tells a story of Cuban history and artistry, reminiscent of colonial era balconies. The archway enhances the rooms open layout while adding depth. Delicate ironwork allows light to filter through, creating an inviting atmosphere. This Cuban inspired archway celebrates the island's rich heritage and creates a seamless connection to the rest of the venue, subtly nodding to the shared history between Cuba and New Orleans.

## Visual of the bar feature in the venue

