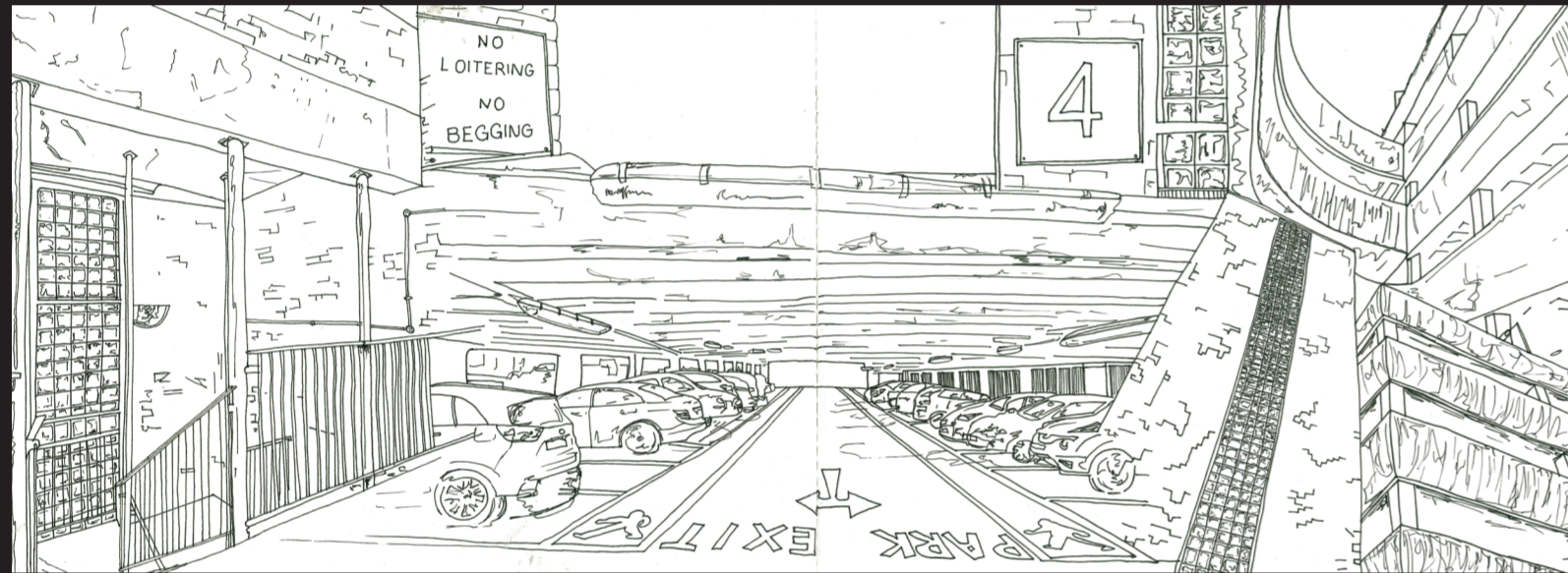


G3 GRU

Cambridge Street Car Park

This building radiates the feeling of unrest and neglect. It is not a relaxing environment, with the eco of engines, rattling lifts, dim lights, cracking paint and a damp smell. The space is not untidy. Visiting the other car parks it became apparent that this out of all spaces felt the most unsafe to leave a vehicle, along side the easy access onto the premises. I believe this site tells us more about Glasgow than its most visited historical buildings. It tells the story of urban sprawl and represents the current decline of Glasgow's city centre with increasing levels of crime and homelessness.



I have identified three problems within Glasgow:

1. The Weather
2. Scarcely used playgrounds
3. A large amount of car-parks

1. Data from the met office covered climate in UK cities over a 30 year period from 1981. Filtering it by the number of days per year with rain, on average. By this measure Glasgow is the rainiest city in the UK with rainfall occurring 170.3 days a year.

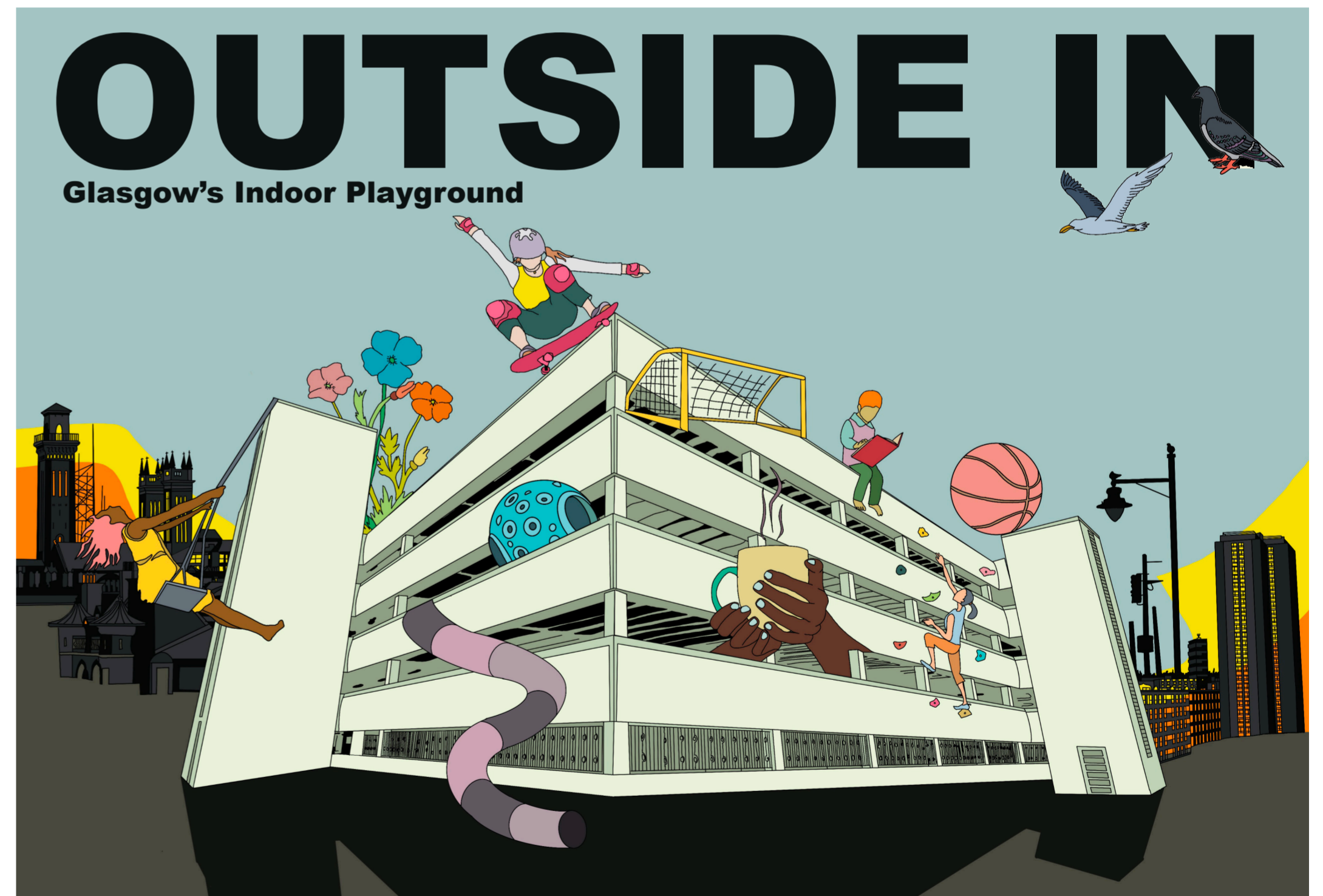
2. Outdoor learning is crucial to a Childs development by supporting mental health and well-being, through inclusive and engaging learning. There are very limited days when typical outdoor activities can occur. Spaces such as playgrounds, skate parks and sports fields are unused for a large proportion of the year due to Glasgow's rainy and cold environment.

3. From the 1st of June 2023 a Low Emission zone was introduced to Glasgows city centre. This meant that all vehicles entering this zone must meet the less-polluting emission standards or face a penalty charge. This has caused in a decrease of cars, resulting in a demand decline for car parks, leaving sparsely used concrete structures all around Glasgow's city centre.

A solution to all three problems would be to re-purpose a car park within Glasgow's LEZ zone into an indoor playground.

So guess what I've designed...

Exactly that.



- Disabled Parking
- Lockers
- Skate Park

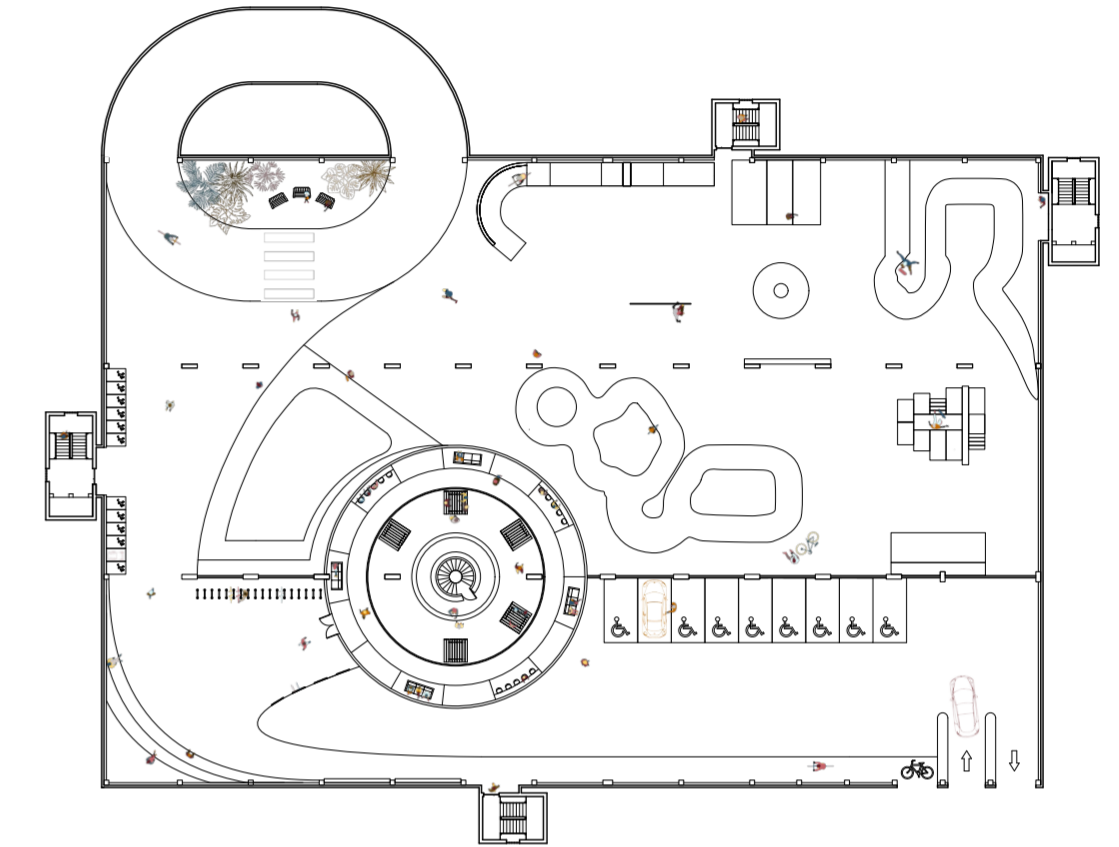
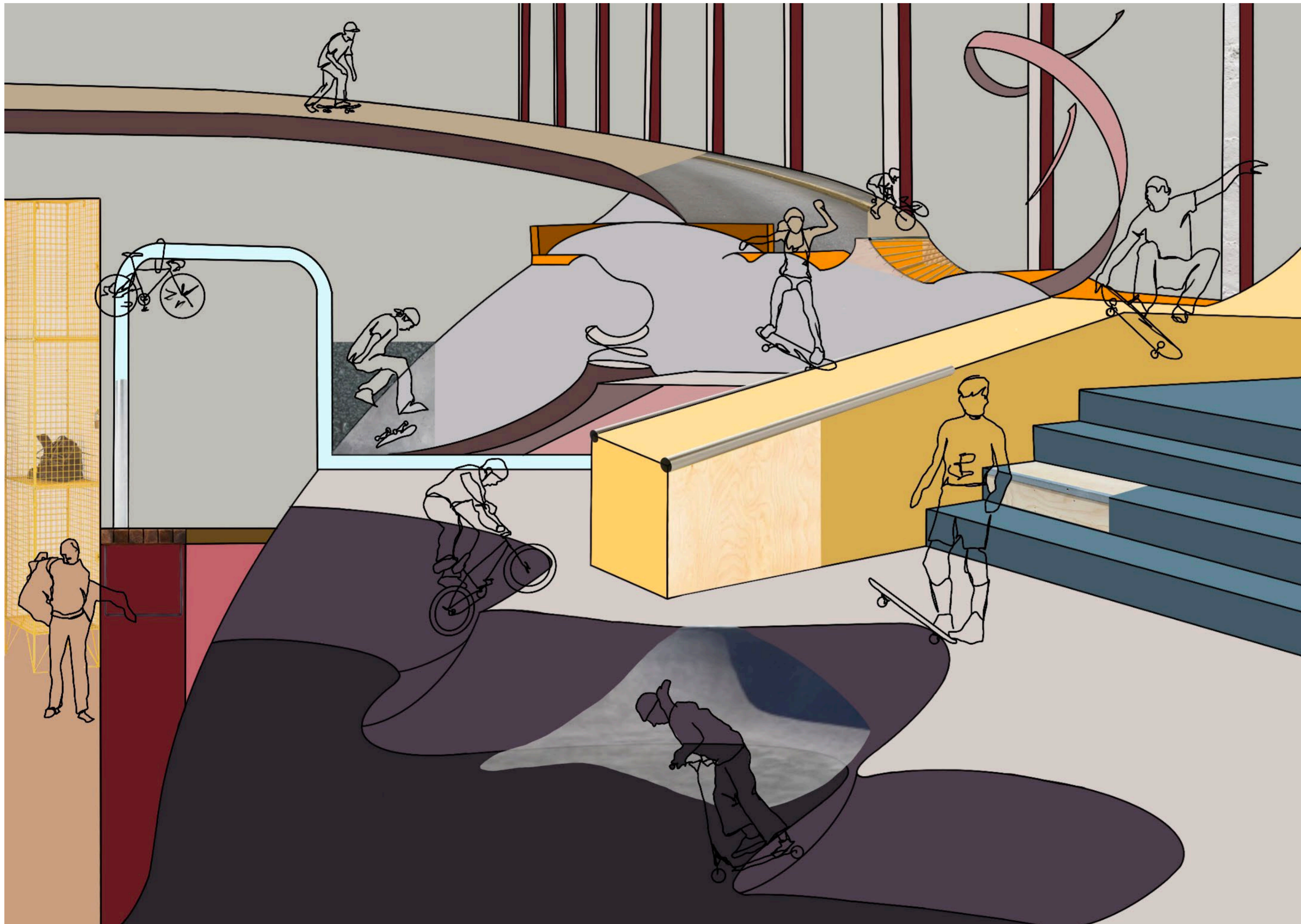


- Bouldering Walls
- Changing Rooms
- Equipment Storage
- Gymnasium
- Sports Court



- Dart Boards
- Dance Studio
- Pool Tables
- Table Tennis Tables
- Viewing Balcony

I found irony in the idea of turning part of cambridge street car park into a skate park, seen as most car parks have a ban against skaters. The smooth tarmac appeals to skaters along with the ramps and large spaces. I wanted to harness this further and create bowls, funboxes, drop in ramps, and grind bars.



Fine Aggregate Concrete
Applied over plywood frame
Spray on concrete
Smoothed with steel trowel

Existing Concrete Ceiling
Cleaned
Added Rectangular LED Bars

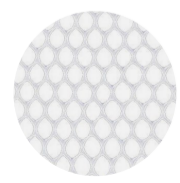
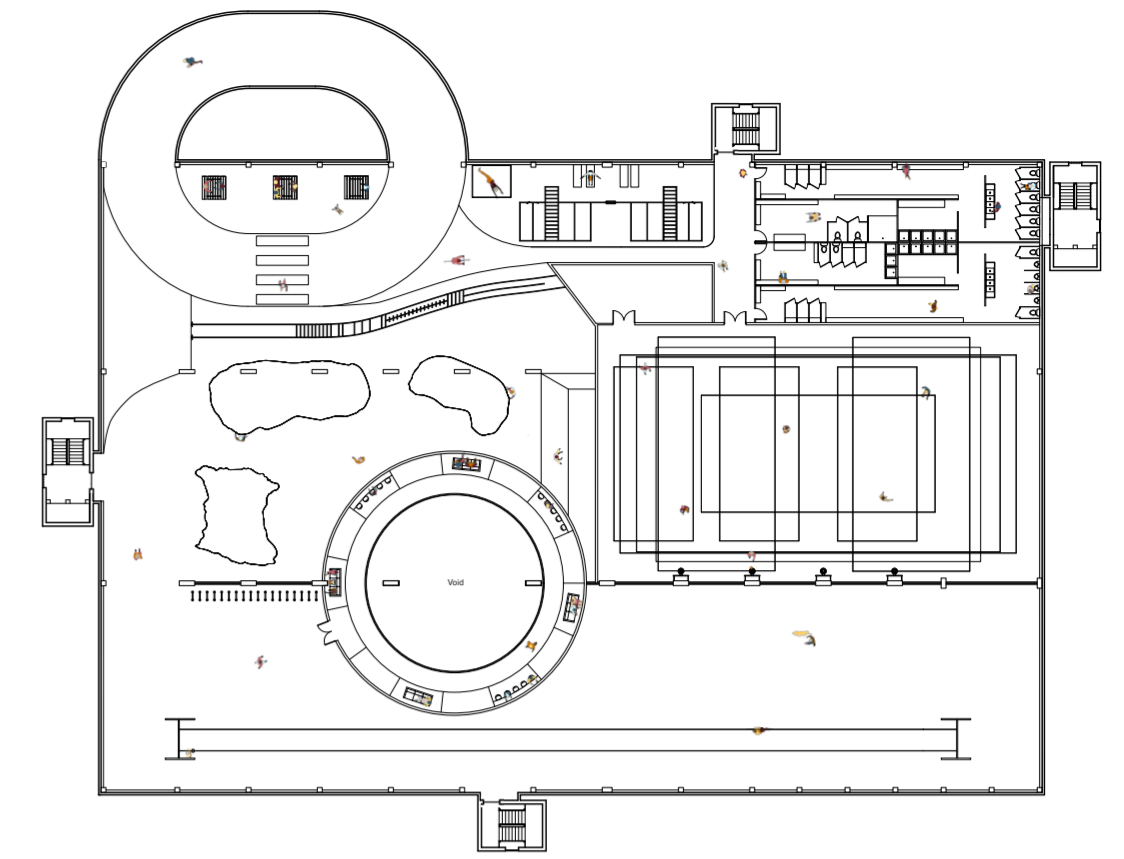
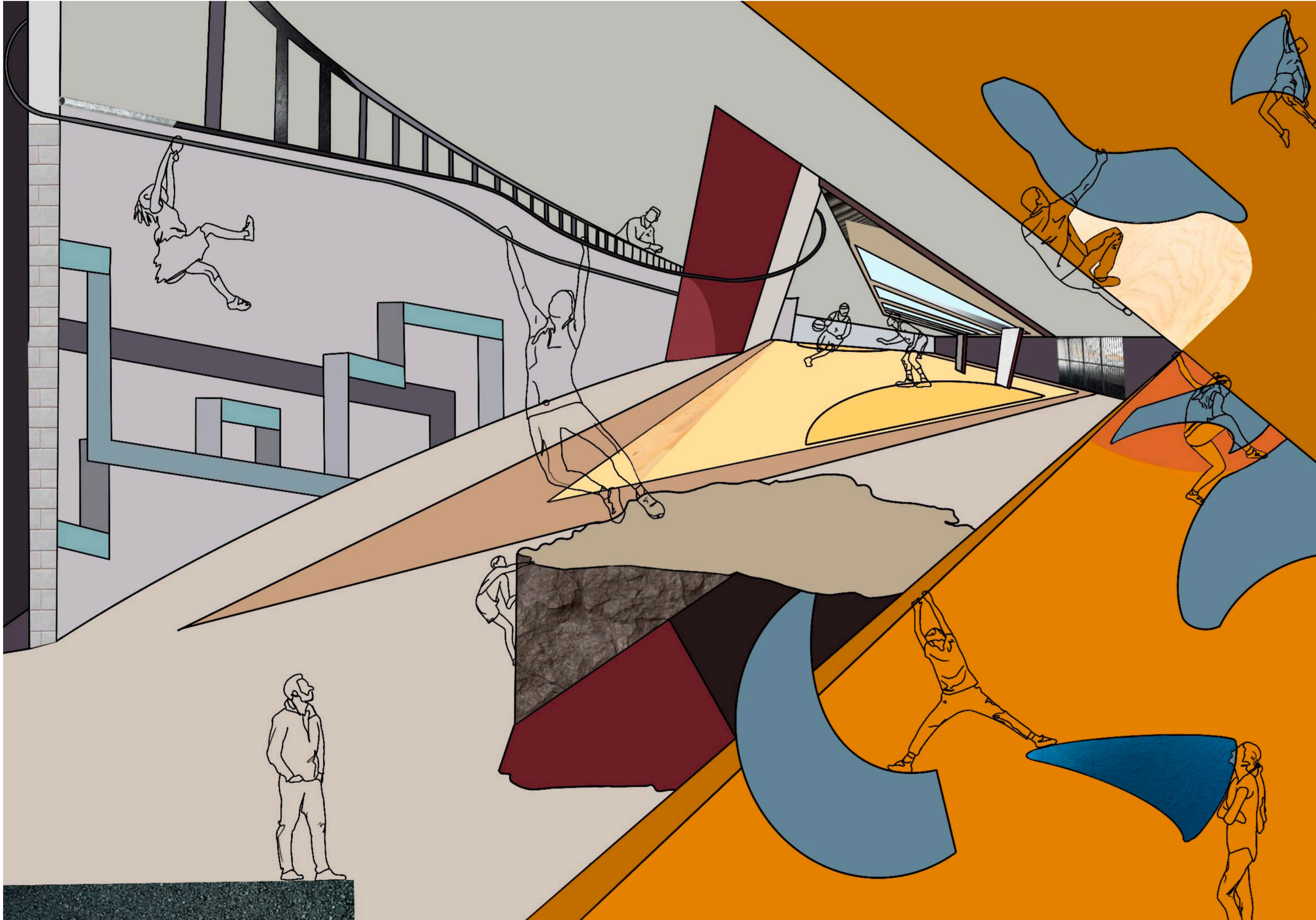
3/8" Birch Plywood
Used for all ramps above ground level
Construction Detail pg. 12

Close-Graded Tarmac
Placed above geotextile woven membrane
sealed using Tarmaseal

Paint : Velspar R37E
White primer coat
Purple paint added ontwop

Level 2

My second floor really harnessed this idea of becoming an indoor playground. I included climbing facilities and a multi-purpose sports court. This floor plays with shapes of space and how these separate activities interact together.



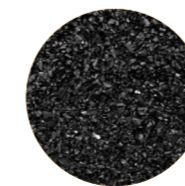
Paint : Velspar V043-6
White primer coat
Burgandy paint added ontop



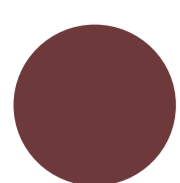
Light Oak Sprung Floor
Undeath a wooden lattice spring structure is installed
Multilayer finish



17mm Plywood
Connected to timber framing
Add climbing holds with 3/8" thread



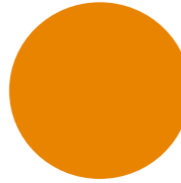
Black Wetpour
Impact absorbing
30 mm Thick



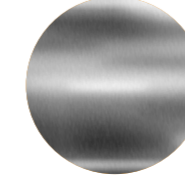
White Plastic Wire Mesh
Attached between walls
To Prevent Sports Equipment falling onto the street below



Existing Steel Gates
Cleaned & varnished



Paint : Valspar X62R134E
White primer coat
Coat of textured paint
Orange paint added ontop



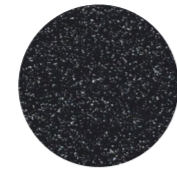
Steel
Scaffolding Pole moulded into shape
Addition of attachments

3 Level

My third floor is the highlight of the building. It uses the voids in order to create 'highlight' points within the space. The viewing balconys allows activities on the third floor to interact with those on the second floor creating cohesion within the playground.



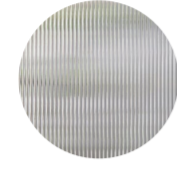
Textured Boldering Wall
Plywood & Textured Paint
to create rock face illusion



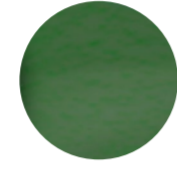
Sprung Gitter Vinyl Floor
From Le Mark group floors
Reflects light above
lays flat & durable



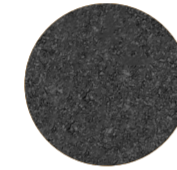
Mirrored Wall
Six 2.5 x 6m Mirrors
Covering length of wall
With boarder



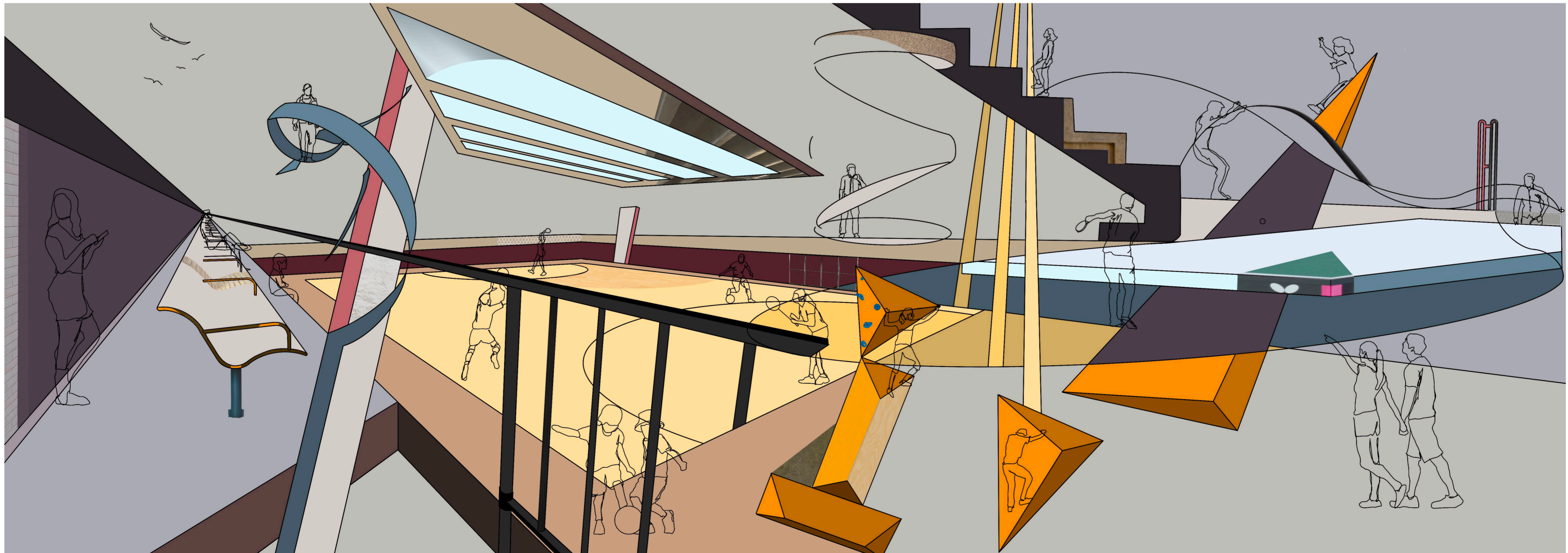
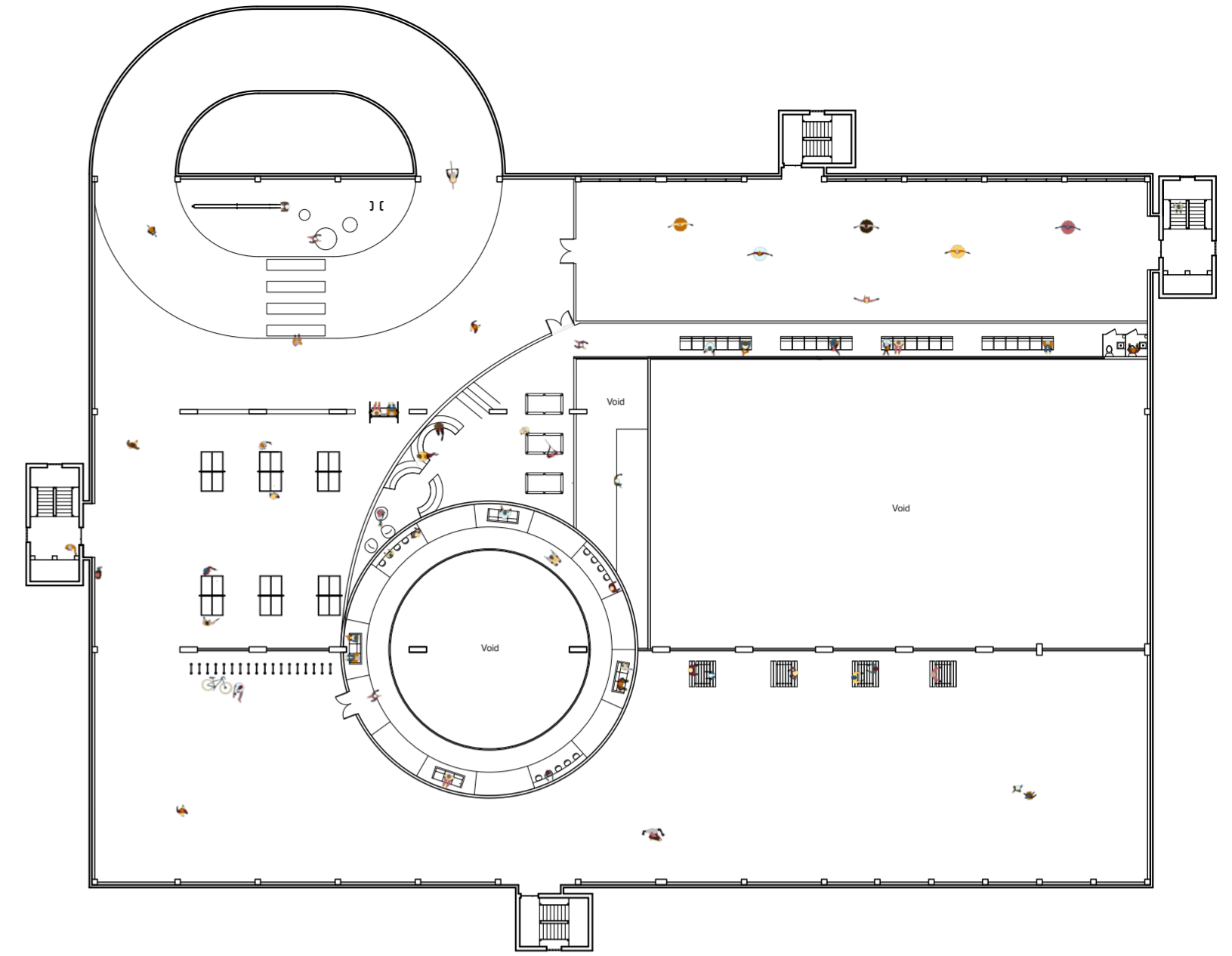
Polycarbonate Wall
Sheets to create curve
Translucent
Resistant to impact

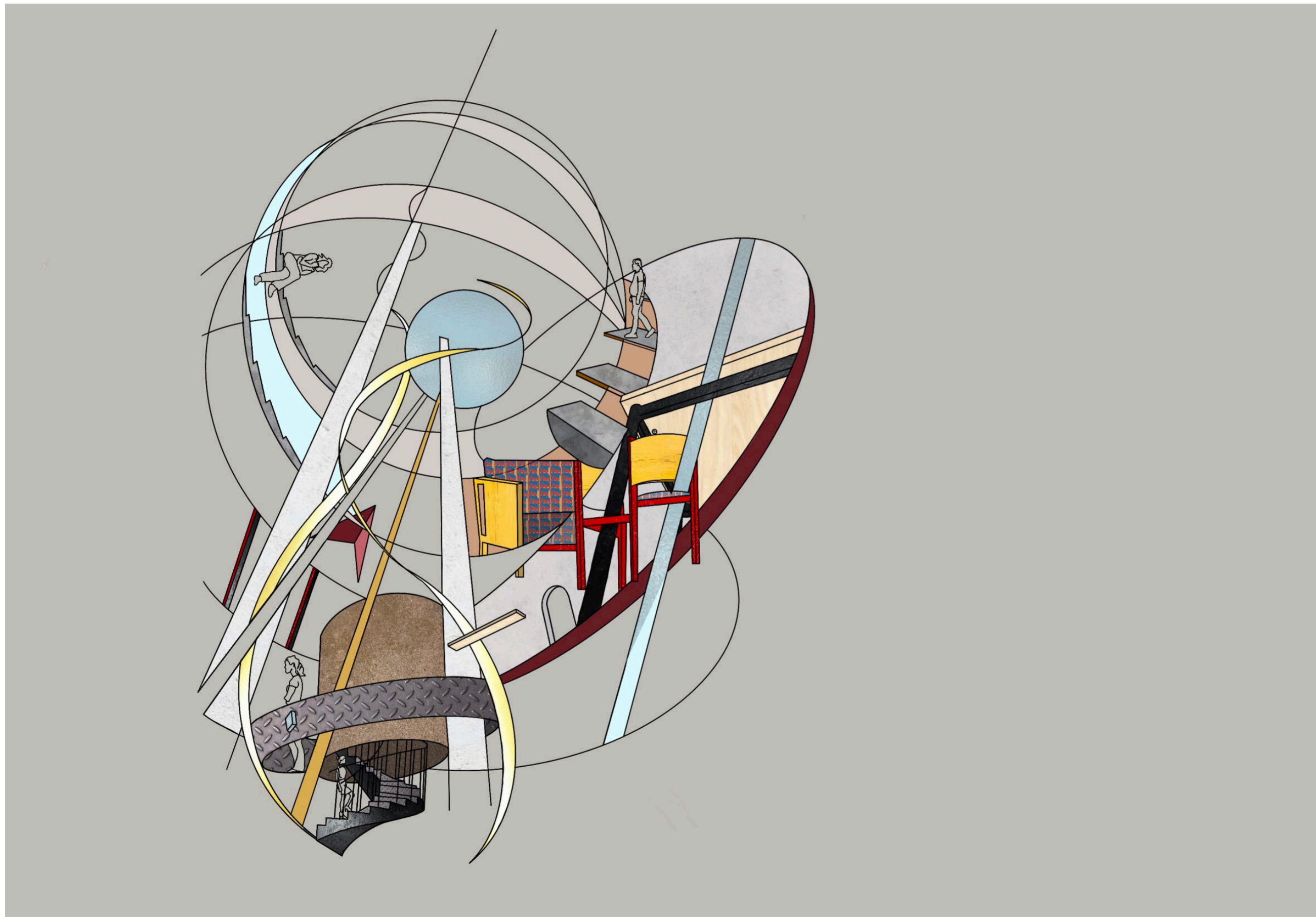
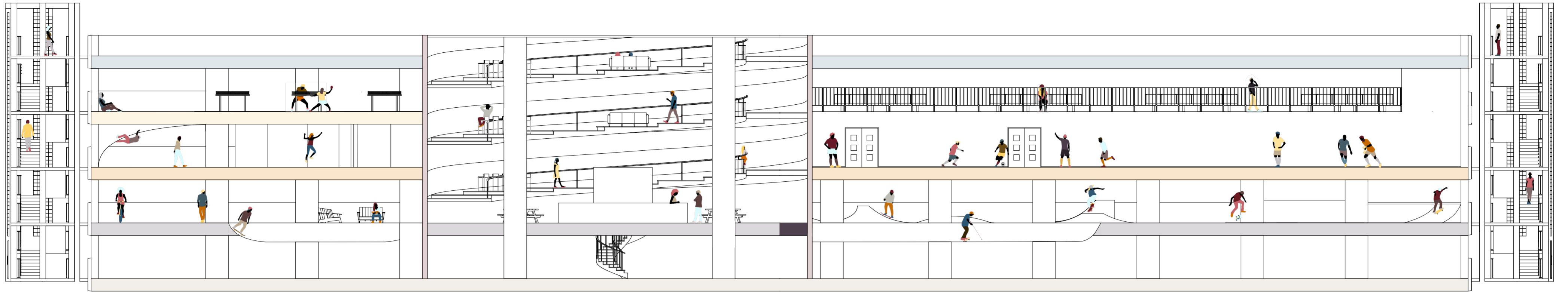


Wall Mat
PVC coated nylon
High density natural PU foam
300mm Depth



Close-Graded Tarmac
Placed above geotextile woven
membrane
sealed using Tarmaseal





Cafe

This heated cafe spirals up every level of the building allowing parents to stay warm and vigilant. It also acts as a 'refuge' as is the only insulated part of the playground. The spiral allows people to see their companions with a 360degree view. Seats and tables align the stairs having the comfort of a cafe with a clear safe guarding purpose. Any view that is blocked from the view cafe are provided with other provisions to accommodate viewers. A ramp is on the outer skirts of the stairs making it accessible for all types of people. The 1st floor is where drinks and cakes would be sold. The middle of the cafe has stairs down to the kitchen, storage, staffroom and toilets.

