

DEAR FICTION HOUSE

CANCER SURVIVORS JOURNEY TO RECOVERY

Dear Fiction House is a Cancer Recovery House that challenges boundaries of healthcare, through the primary use of entertainment as a means for healing.

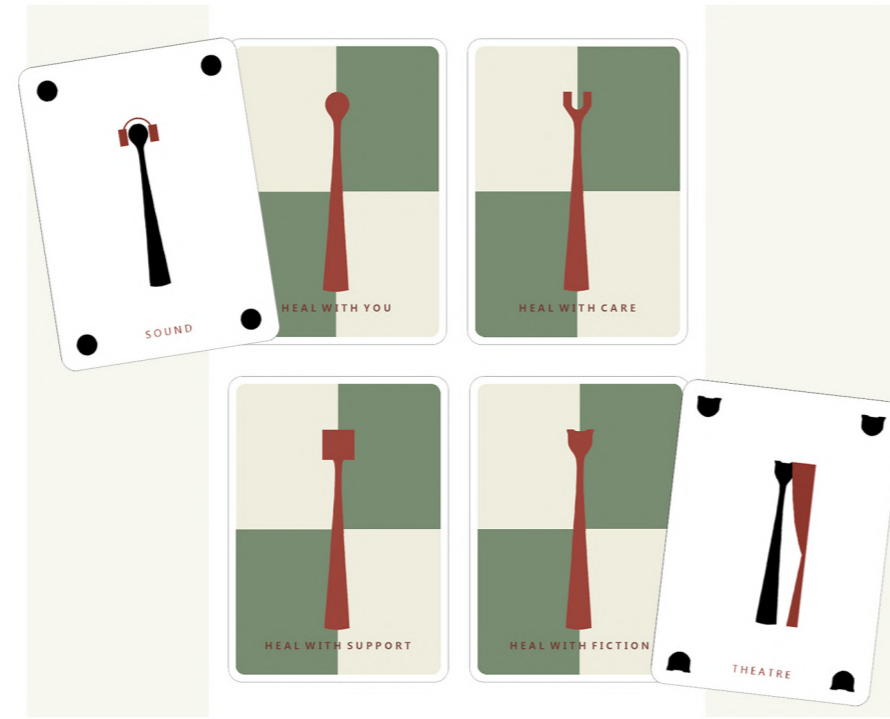
The Fiction House takes cancer survivors on a hopeful, explorative, and experiential healing journey, allowing them to reestablish their drive in a stimulating setting.

Often healthcare spaces are unsupportive to Cancer sufferers and survivors due to their mundane atmospheres and their lack of providence of sense of control. Dear Fiction House challenges these constructs with an aim to deinstitutionalize and destigmatize the recovery healthcare environment through a playful and inventive approach, allowing them to gain independence in a creative engagement process.

DESIGN STRATEGY

With an uplifting energy, the space is sensitively designed to allow each individual to be in control of their own unique recovery journey through the use of 'Control Cards' within the 'Control Station'. This feature uses very playful yet clear symbols that become an accessible feature to allow individuals to choose the activity they want to engage in, giving control back to the patient.

Dear Fiction House encourages the engagement with positivist interactive entertainment, immersive, mediated and beyond, to aid their restoration and provide meaningful social interactions. At Dear Fiction House, there are two entertainment strategies: **Positive Distraction and Constructive Entertainment**. These are integrated in the various interactive spaces around the building, promoting the sense of choice. The integration of entertainment can allow individuals to find enjoyment and meaning in their healing journey, influencing stimulative restorative effects.



CONTROL CARDS



RECEPTION

INVITING ATMOSPHERE FROM THE MOMENT OF ARRIVAL

4 ROOM TOWERS

5 FICTION SPA

6 THE FOREST

7 CONSULTATION



3 FICTION THEATRE

8 TRAIN BAKERY

1 RECEPTION

2 CONTROL STATION

9 CASSETTE

10 FICTION HALL — SUPPORT GROUP

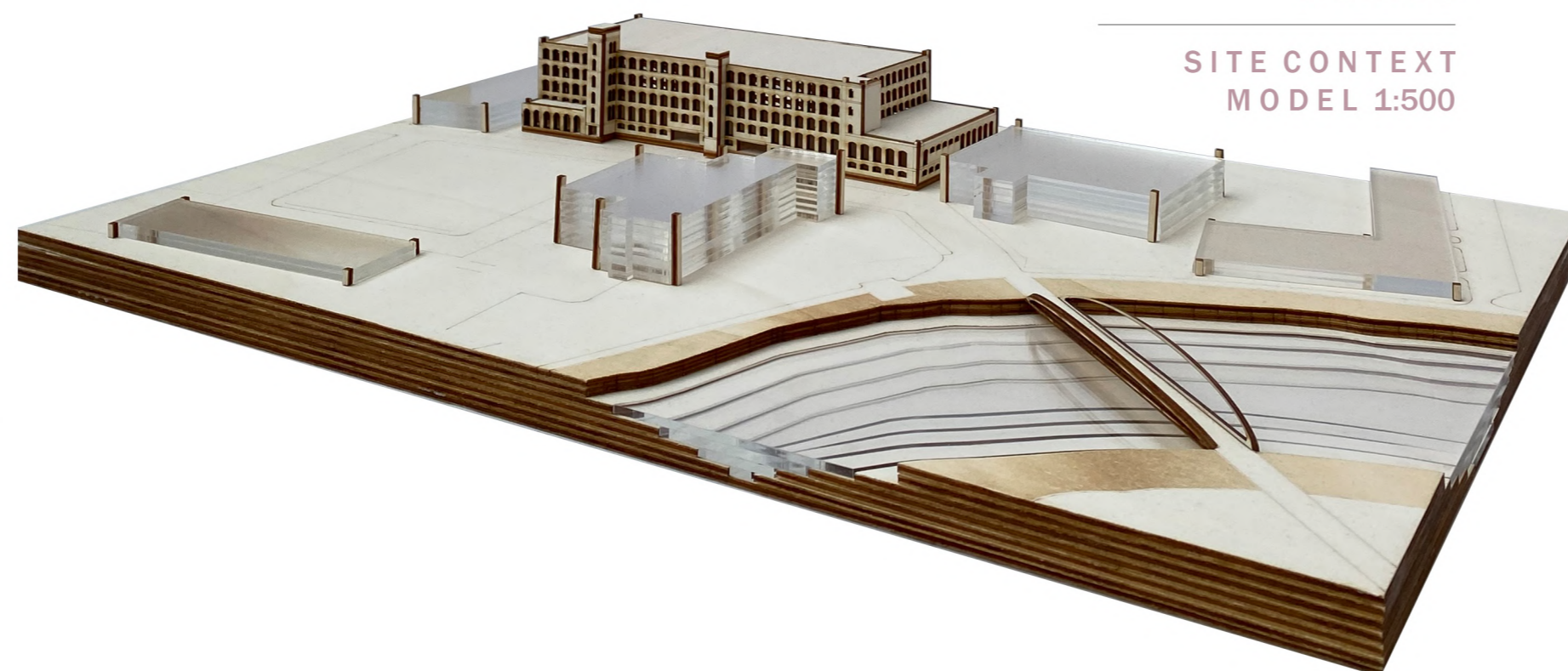


AN INVITATION

The entrance experience into the Fiction House is designed to be engaging to loosen any fears that can emerge, offering a peace of mind, making the experience a smooth and reassuring journey in and out.

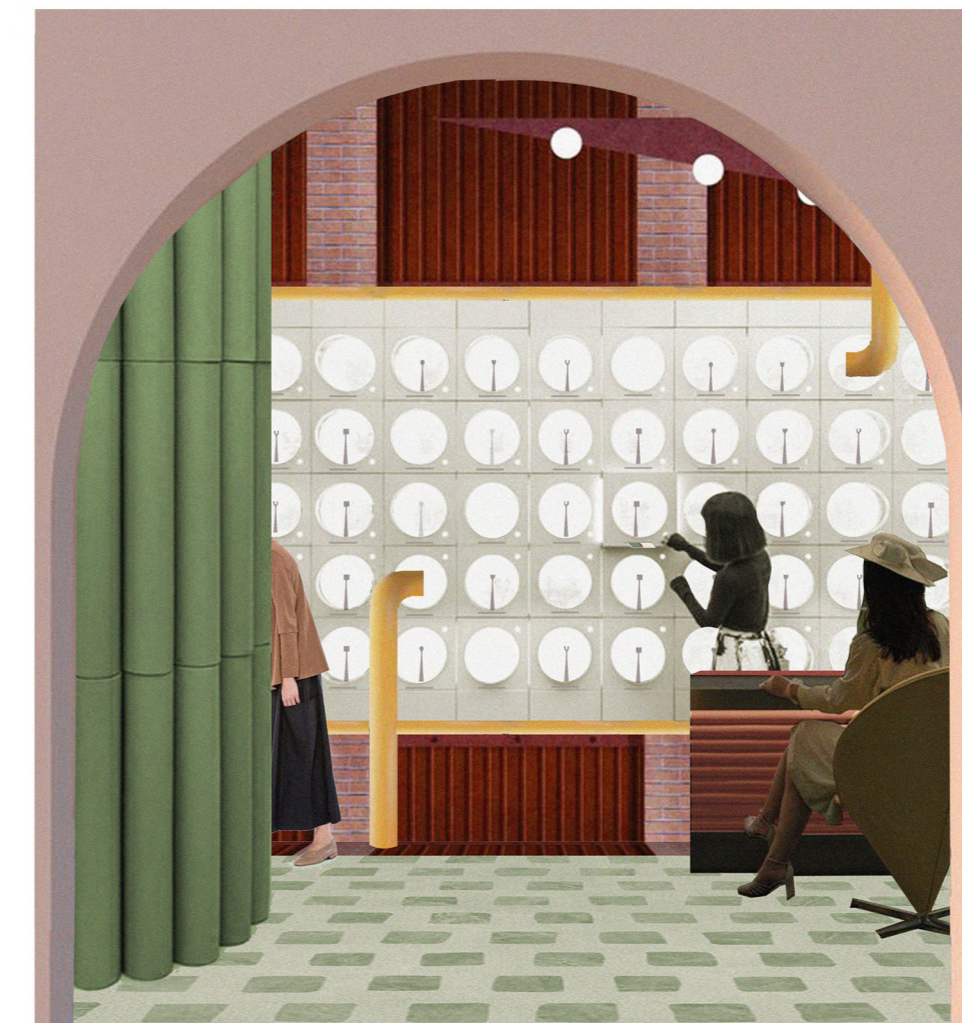
SITE CONTEXT

Dear Fiction House is located in the Former Cotton Mills in Dalmarnock, Glasgow (121 Carstairs Street) with a close connection to the River Clyde.



MAKING

SITE CONTEXT MODEL 1:500



2 CONTROL STATION

ESTABLISHMENT OF THE SENSE OF CONTROL

The Control Station is a landmark present on each floor of the Fiction House, in which visitors and residents have the opportunity to **define their own recovery journey** through a guided immersive experience. This is done by allowing them to choose the activity they want to participate in through the engagement with the 'Control Cards'. This can help boost their confidence and independence when there is no staff around, developing a creative and playful engagement process.



Interactive Wall Section
1:20 @ A2

- 1 Module Unit 1
- 2 Module Unit 2
- 3 Storage
- 4 Soft wood framing
- 5 Oak veneered MDF
- 6 Decorative red wood panels
- 7 Brushed stainless steel

INTERACTIVE PROCESS

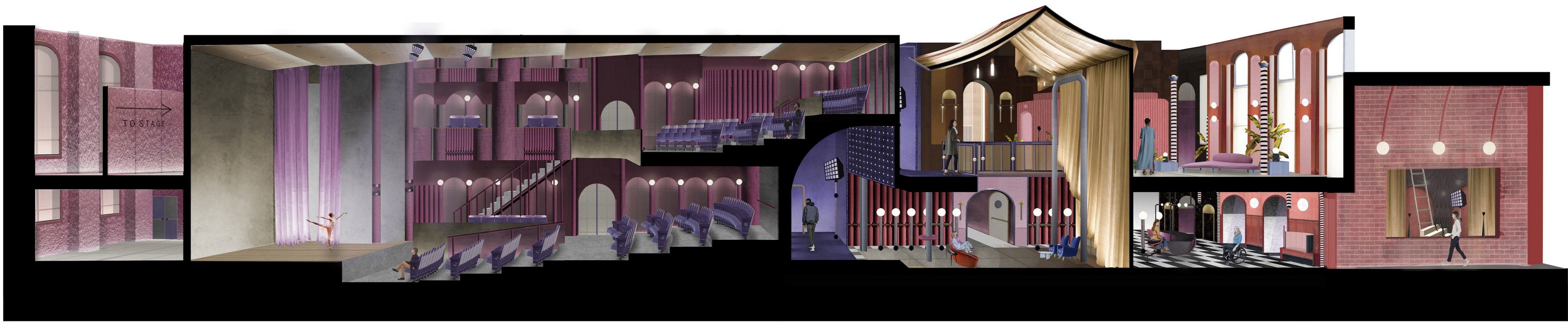


COLLECT THE CARD WHEN SLOTTED OUT

SCAN THE CARD

LOCATION IS REVEALED ON THE FICTION MAP

JOURNEY BEGINS



SECTIONAL PERSPECTIVE THROUGH THE FICTION THEATRE



3 FICTION THEATRE

POSITIVE INTERACTION

The dynamic changes and build up within the journey through the Fiction Theatre create the space for free interaction, exploration and the feeling of belonging to a community through the love of performance, positively distracting visitors and residents.



THEATRE ENTRANCE ELEVATION 1:100 @ A2

CONCEPT TO MAKING



THEATRE ENTRANCE MODEL 1:100



A DRAMATIC TRANSITION

The noise softens, concealed through the acoustic quality of the thick walls, causing a shift in atmosphere as you pass through the transition leading to the theatre's reception.

MATERIALITY

RESIN-GLAZED BRICK

The brick-like appearance was inspired by the original materiality of the site. However, to break the institutional notion of brick structures, the transition uses resin glazed brick, turning the experience around, giving it a more fresh and dynamic finish.



THEATRE RECEPTION

The Fiction Theatre's reception area transforms people's perception through its bold lighting forms and colours, setting a friendly and playful mood to loosen boundaries and promote interaction.



4 ROOM TOWERS SECTION

MY FICTION HOUSE

Rooms in The Fiction House are designed as Towers, rather than floors to minimise long corridors that feel endless. This was a strategic decision considering the large scale of my site. People can locate to the elevator nearest to their room towers, making wayfinding easier.

CONCEPT TO MAKING



ROOM TOWERS MODEL 1:100

The Room Towers opens the opportunity for communities and friends to emerge and gather, as each 3 rooms share an indoor balcony overlooking the world of fiction journeys that awaits them. This makes it feel less institutional and more personal and friendly .. a safe zone.



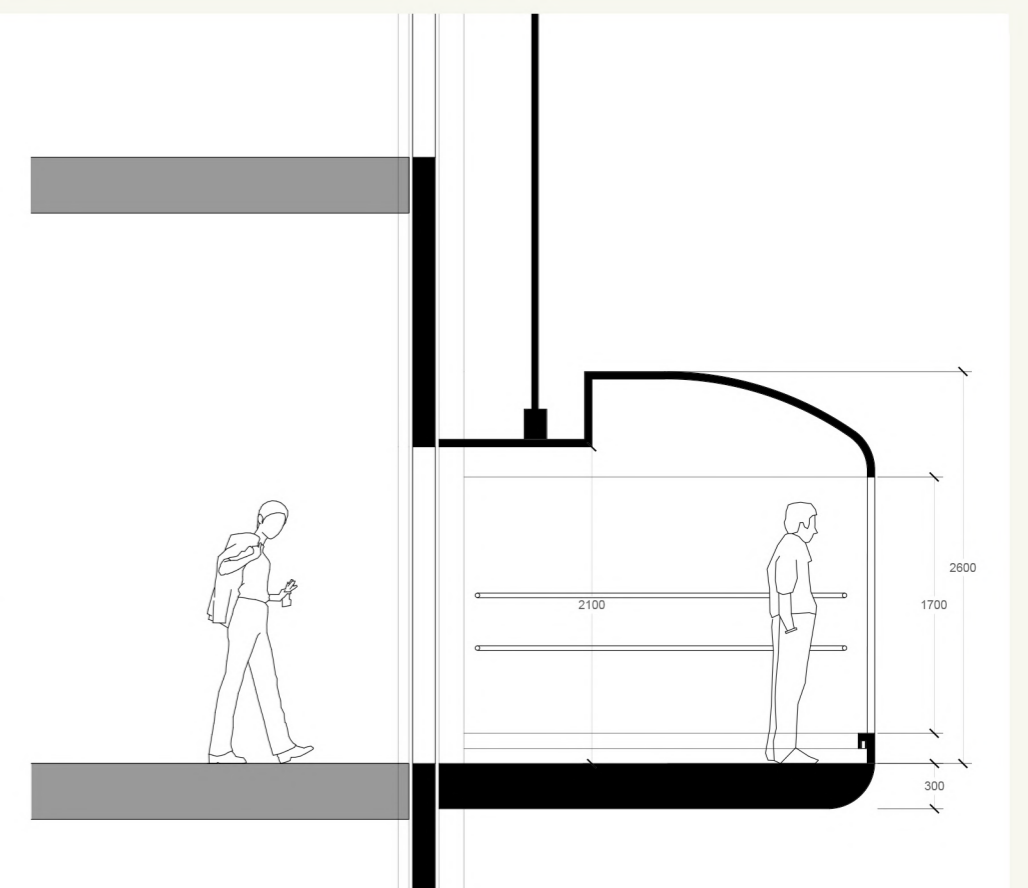
BEDROOM DESIGN
A PEACEFUL SERENITY



BESPOKE ELEVATOR
A MOMENT TO PAUSE

Two bespoke elevators are strategically placed on either end of the Fiction House, between the room towers, further enhancing their journey experience.

They are designed with a circular, dome-like structure, featuring a glass wall that allows people to look at the stimulating view of the Fiction House through a void space. This helps with navigation as it becomes a recognisable landmark within the building, allowing them to wayfind independently, enhancing their sense of control.



HEALING JOURNEY EXPERIENCES



5 FICTION SPA TOGETHER

In the Fiction spa residents can interact independently or together, providing a choice for their Hydrotherapy or Physiotherapy session preferences in a stimulating and relaxing ambience.



6 THE FOREST BLISSFUL CONNECTION

Here sunlight and nature take over, individuals can gather, have consultation sessions in the therapy pods, where there is also an integration of guided meditation available, to allow Cancer Survivors to relax in the sanctuary of the forest.



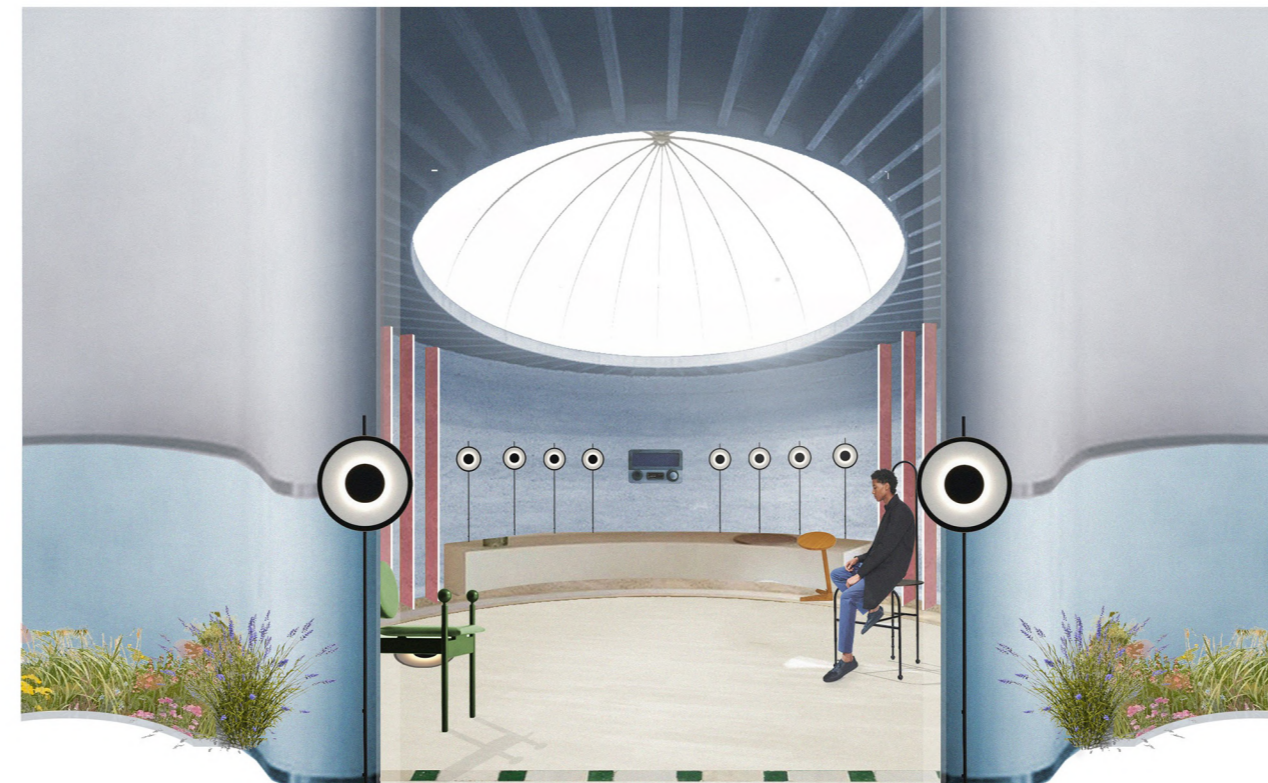
7 CONSULTATION TRANSPARENCY IN CARE

The consultation area in the Fiction House allows people to freely express their thoughts, worries and struggles. It is also where they can go to get redirected to follow up care.



10 SUPPORT GROUP ART THERAPY A POWERFUL CONVERSATION

The support group space uses interactive light installations, integration of neurotherapy and soft sensory materials to create an emotive and relaxed atmosphere. The interest of this atmosphere contrasts well with the function of a support group, targeting their self-reflection, creating a strong and powerful sense of belonging to a group.



9 CASSETTE A MULTI-SENSORY EXPERIENCE

In this music therapy space, 'Dawn' devices create a sensory experience through the application of multiples of ambient sounds, allowing the user to meditate or can allow positive distraction to occur.



8 TRAIN BAKERY IMMERSIVE TRANSFORMATIONS

The Train Bakery, is an immersive bakery experience within the Fiction House. A playful scene unfolds through the arcade-like design integrated within the bakery, adding a theatrical touch to the space.