

INSIDE OUT

LGBTQIA+ Celebration Space & City Forum

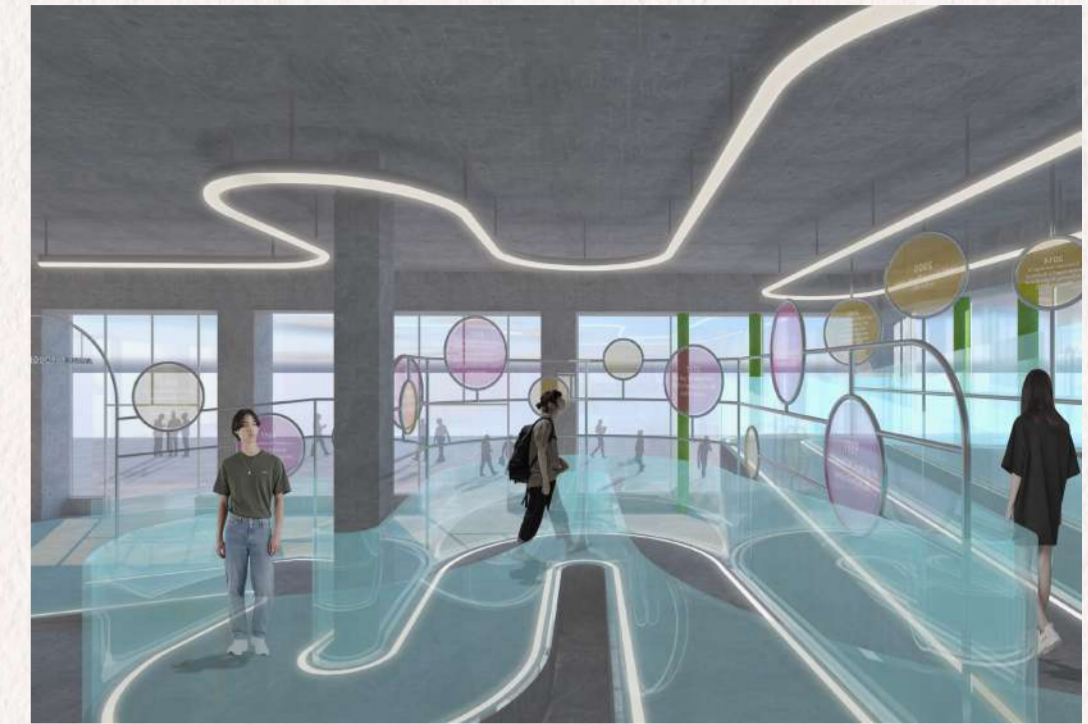
Inside Out City forum aims to unify and celebrate the LGBTQIA+ Community. Combining the make-up of a traditional library with a touch of modernity, this stimulating environment will actively encourage individuals to learn about queer history and culture. Inside Out will house a selection of social and educational spaces, catering to people of all ages and social groups. The forum hopes to subvert the long-standing perception of a queer safe space being nightclubs, or somewhere that involves alcohol, drugs or a performative aspect. It will be a teetotal daytime space where all people can meet authentically without restriction or pressure.

Key

- 1. A Walk Through History/Communal Cafe Space
- 2. Reflection Hall
- 3. Exhibition Library
- 4. Mezzanine Library
- 5. Creative Studio Hub
- 6. Childrens Library/Family Wall
- 7. Modular Gallery Space
- 8. Reading Room
- 9. Archive
- 10. Made with Pride Shop
- 11. Inclusive Toilets



CONCEPT VISUALISATION



A WALK THROUGH HISTORY - Many hurdles have been overcome in the fight for LGBTQIA+ rights and equality. This area covers key milestones from the late nineteenth century to present, allowing people to travel through the space as well as learning about the history of the community.

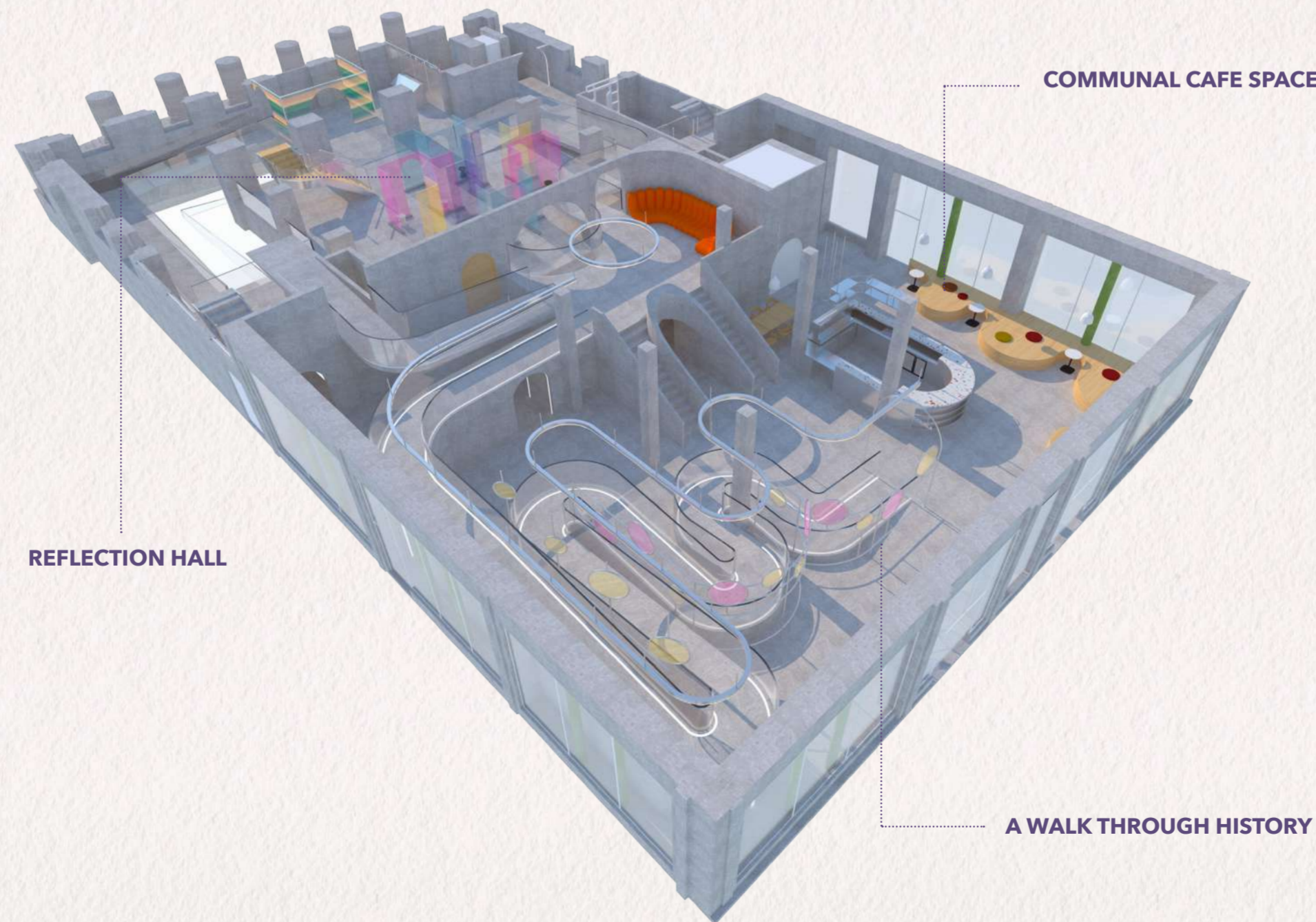


ROYAL EXCHANGE SQUARE



BUCHANAN STREET

GROUND FLOOR



COMMUNAL CAFE SPACE

REFLECTION HALL

A WALK THROUGH HISTORY



COMMUNAL CAFE SPACE - A space which will provide a balance between comfort and privacy. A networking space where patrons can come to work, socialise and indulge in refreshing food and beverages between other day to day activities.



REFLECTION HALL - A solemn space filled with contemplation, remembrance and reflection.

CONCEPT VISUALISATION

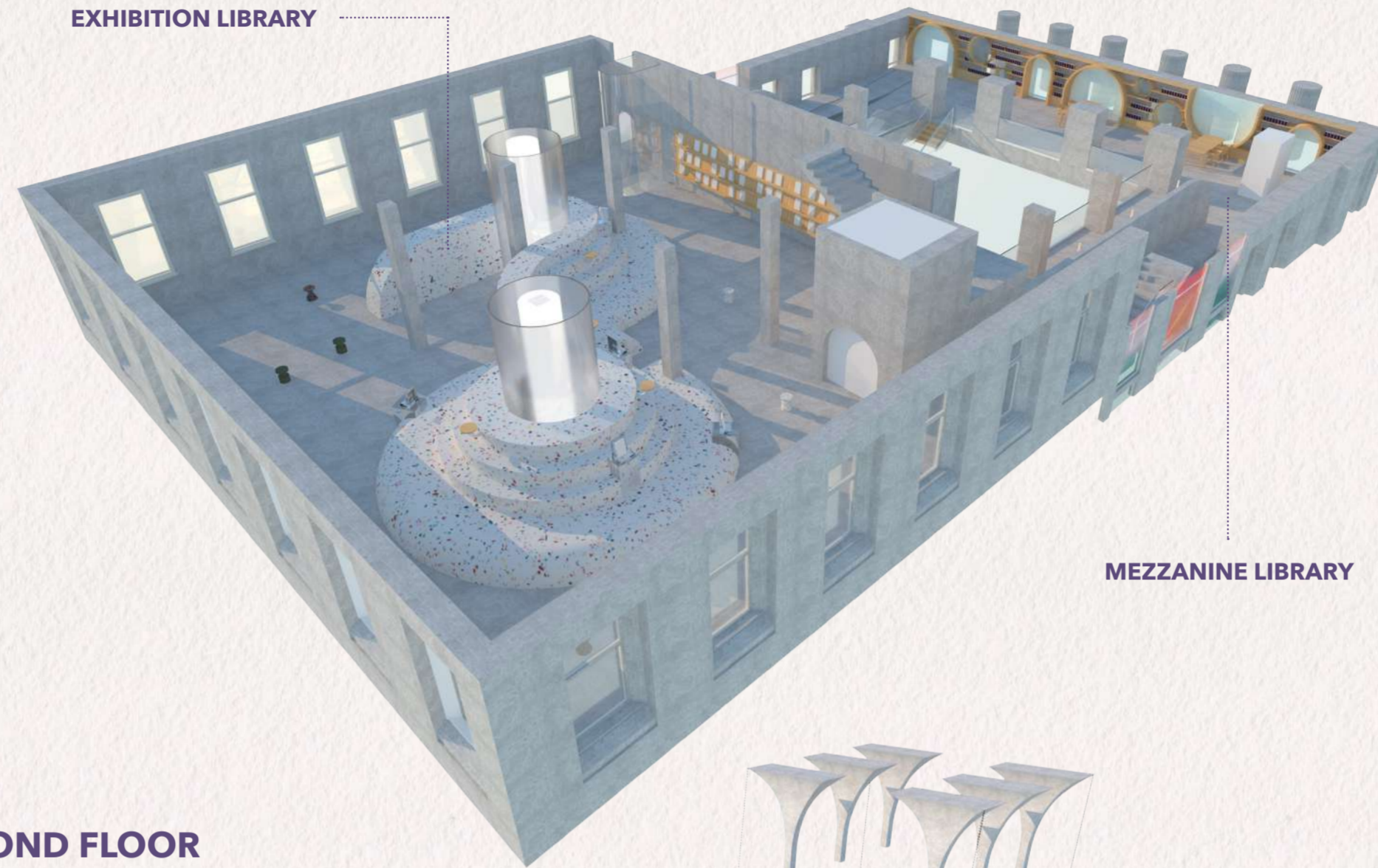


MEZZANINE LIBRARY - The main library space which will occupy the mezzanine level looking out onto the reflection hall. A quiet space to work, read and relax.



EXHIBITION LIBRARY - A Modular space which caters to educational literature and magazines. The space acts as an unconventional exhibition and installation library focusing on up-to-date attitudes. This will be a space where people can socialise and read in their solitude.

FIRST FLOOR



EXHIBITION LIBRARY

MEZZANINE LIBRARY

SECOND FLOOR



THE CHILDRENS LIBRARY

CREATIVE STUDIO HUB

THE FAMILY WALL



THE CHILDRENS LIBRARY - The children's library will be a space where users between the age of 5 and 16 can come to learn more the LGBTQIA+ community through books, age-appropriate imagery, playful seating and likeminded individuals who also occupy the space.



THE FAMILY WALL - A pioneering tool to break down the stereotype of a nuclear family.



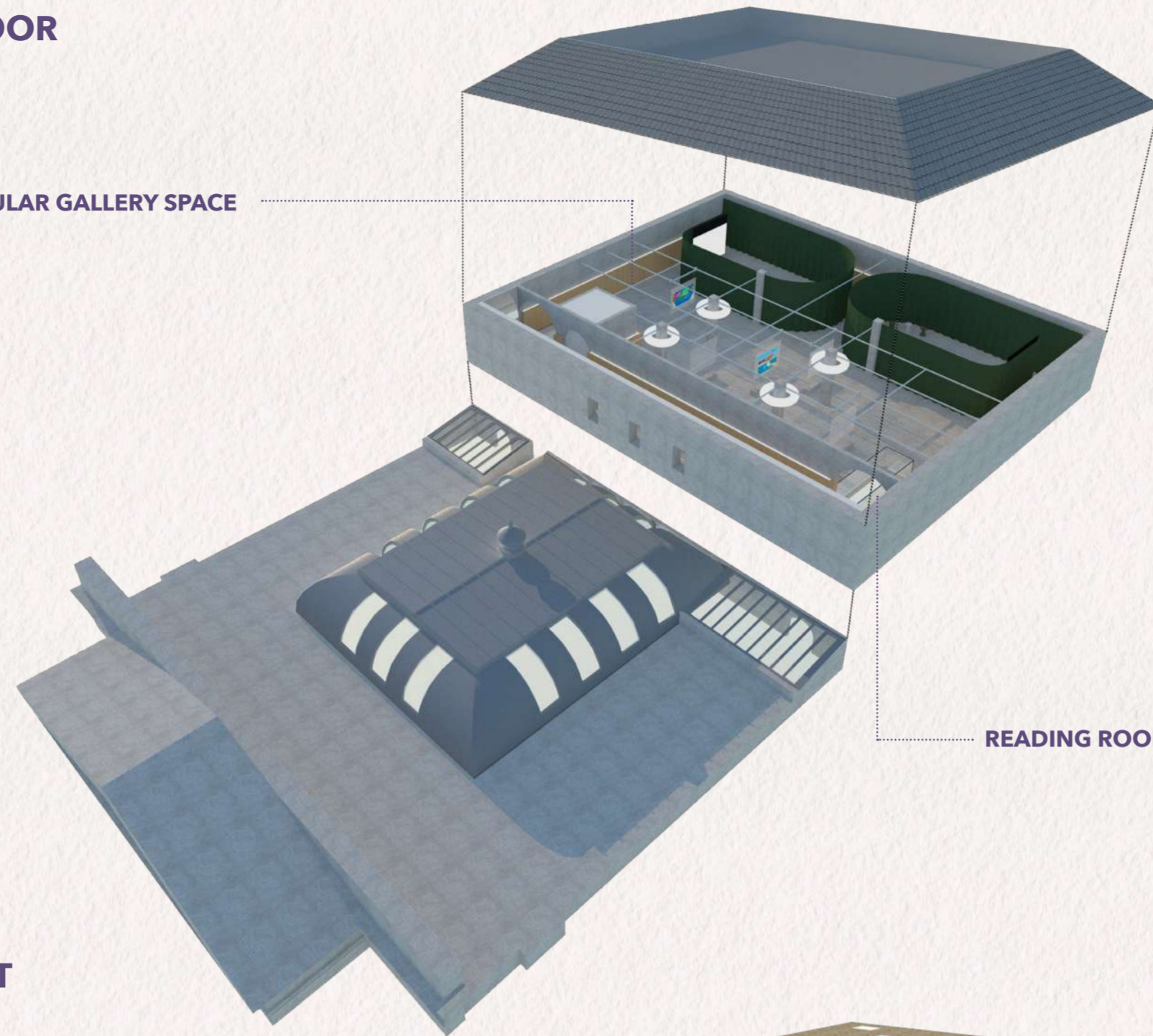
CREATIVE STUDIO HUB - Comprised of creative workshop spaces and an office area for people who work at Inside Out. The space should encourage collaboration inviting all people to participate as and when they wish to.

CONCEPT VISUALISATION



THIRD FLOOR

MODULAR GALLERY SPACE



READING ROOM

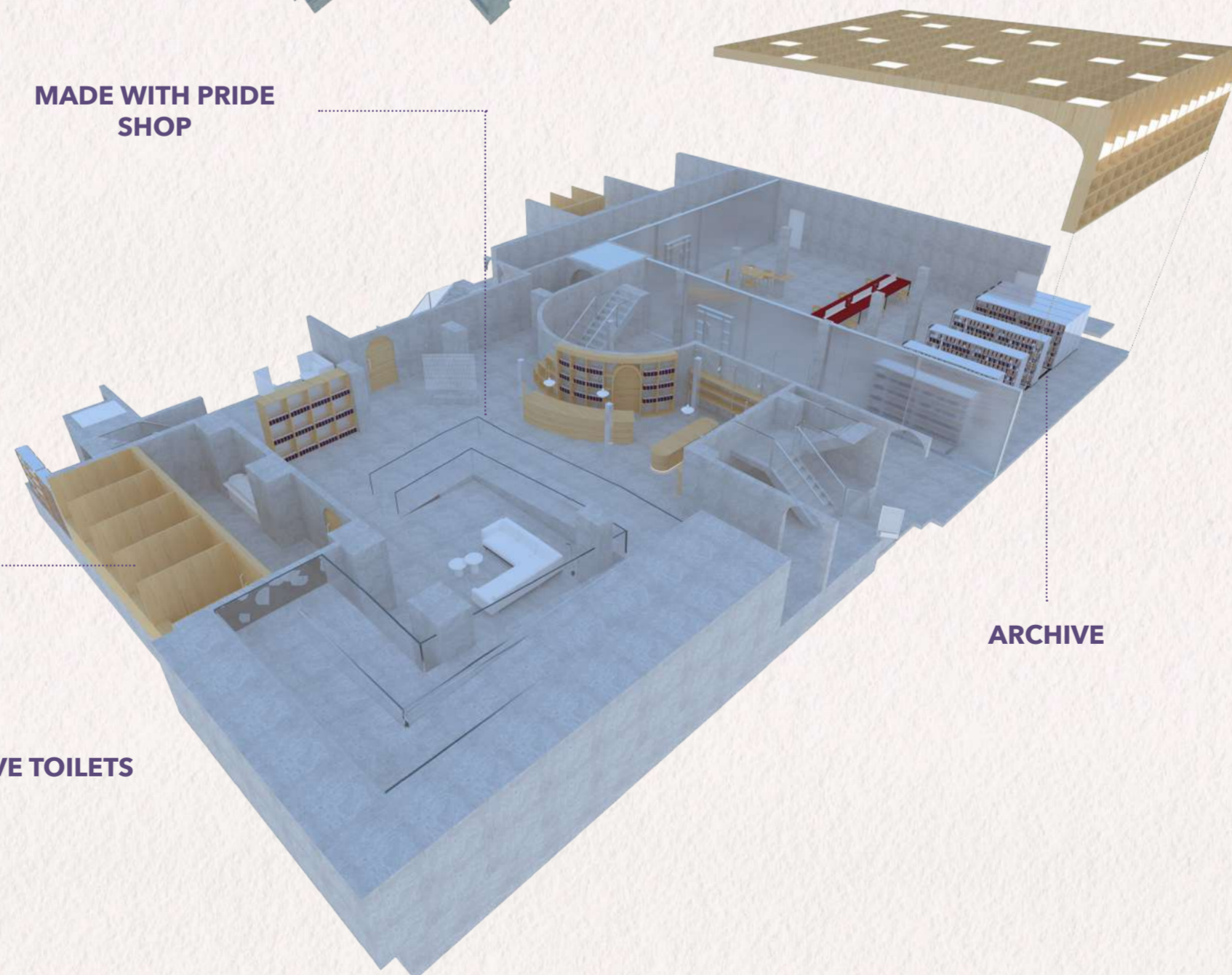


ARCHIVE - The archive will be a space where artefacts related to queer history and culture can be retained and respected in the most appropriate way. Accommodating various books, manuscripts, letters, photographs and diaries that have been collected and recorded overtime, this space will physically and theoretically act as the foundation for the rest of the building.



BASEMENT

MADE WITH PRIDE SHOP



ARCHIVE

INCLUSIVE TOILETS



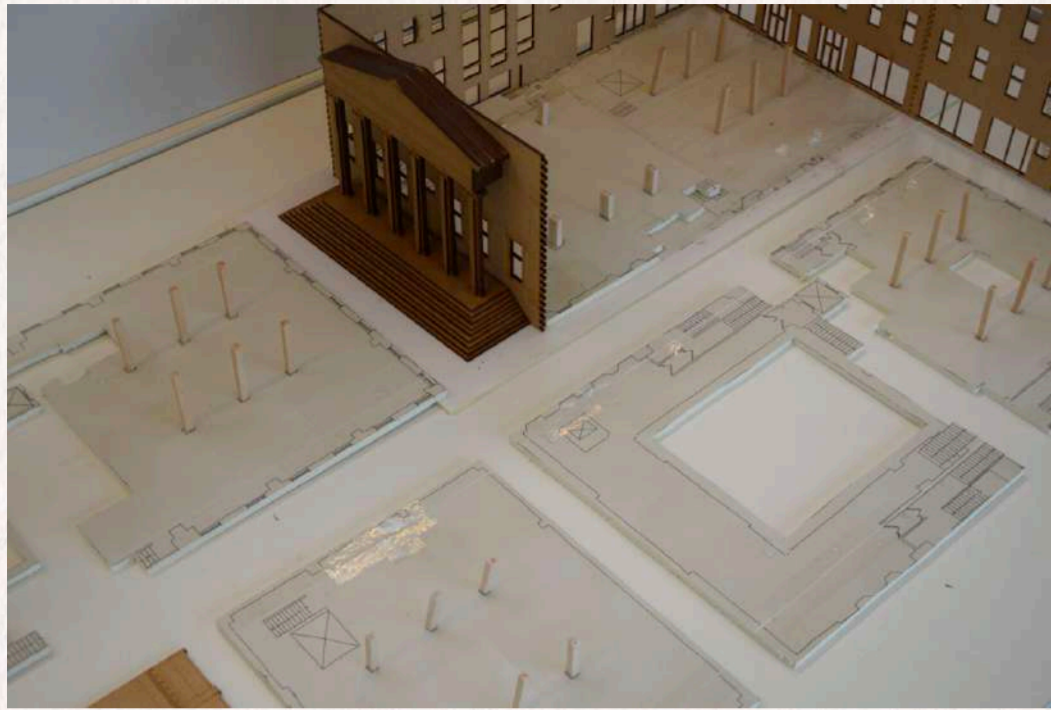
MADE WITH PRIDE SHOP - The aim of Made with pride is to provide opportunities for LGBTQIA+ creators, designers and makers. The store will feature hand made and locally sourced gifts and other products that have been carefully considered with the community at heart.

MODULAR GALLERY SPACE - This carefully thought out modular gallery space will highlight multiple social and political topics in a dynamic visual manner. Pioneering Works that have changed our perspective of the LGBTQIA+ community throughout time will be exhibited. Renowned artists such as David Hockney, Keith Haring and Henry Scott Tuke will share the space with new creatives, creating new opportunities, sharing fresh perspectives and unifying the community, thereby creating a space where all people can be celebrated together.



READING ROOM - A transitional space sitting on the top floor of the building. Three arched window seats with a view over Royal Exchange Square. This will provide the user with a positive environment to unwind, read a book or to simply admire the view. It will be a comfortable resting space between the visually stimulating rooms surrounding. The wall is lined with colourful Rope sofas designed by Normann Copenhagen.

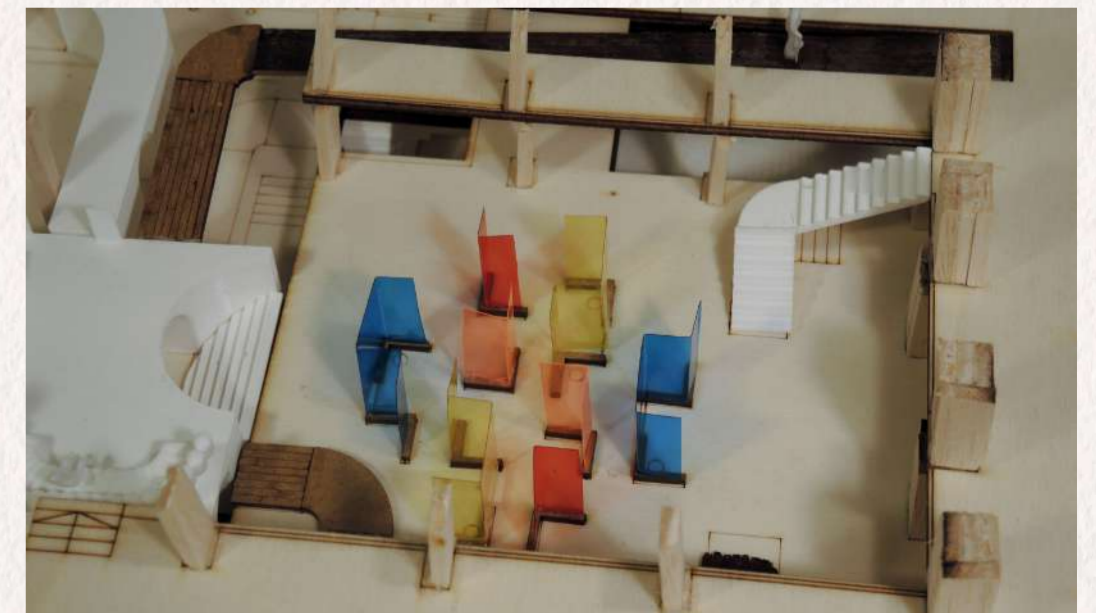
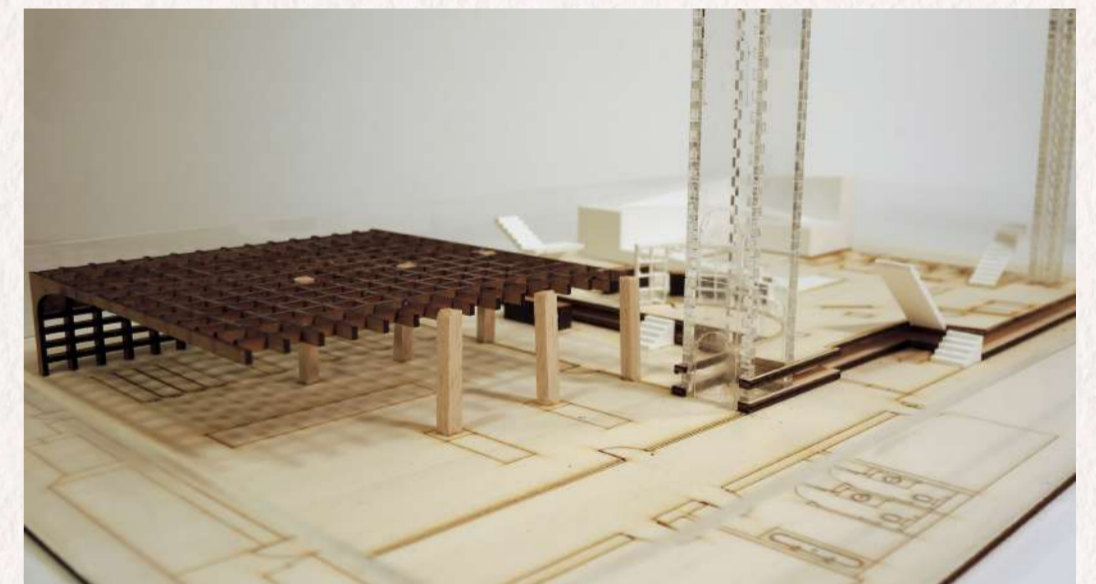
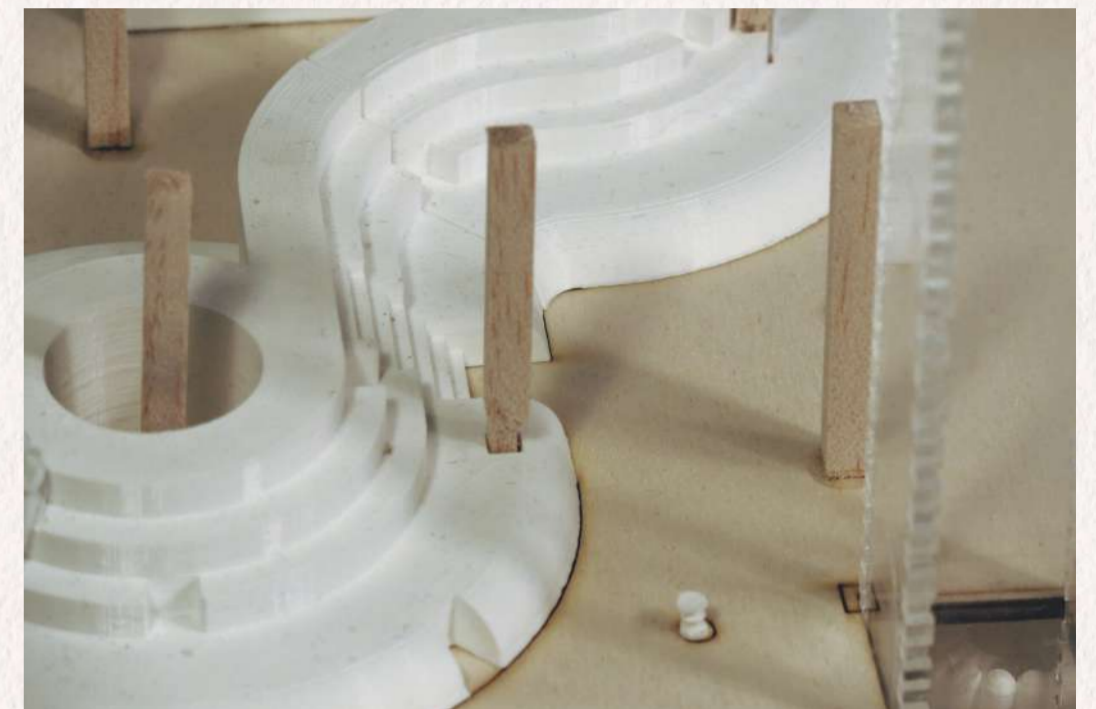
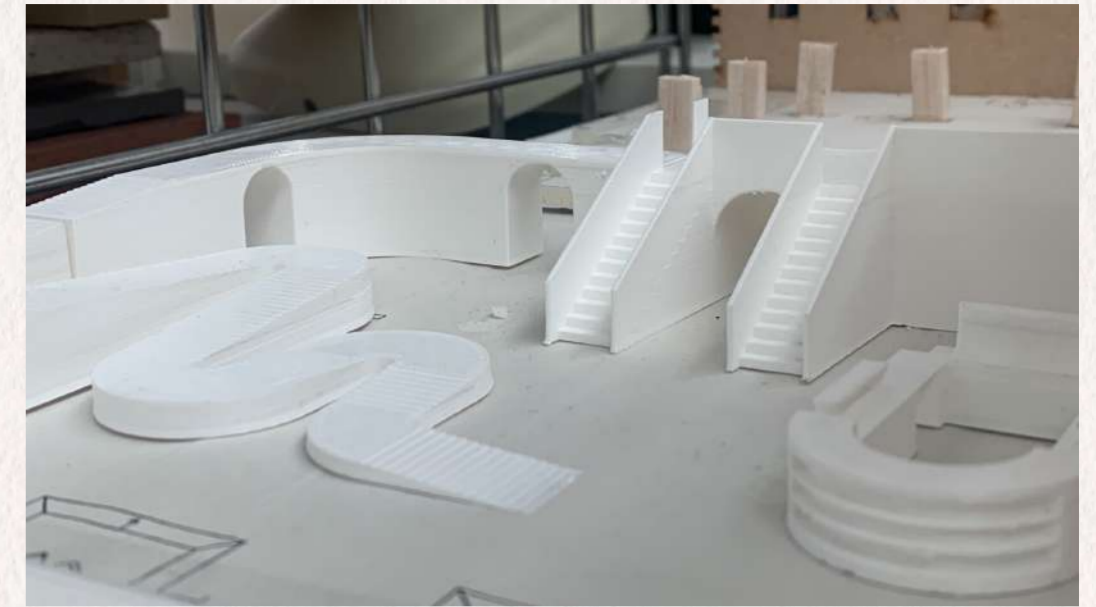
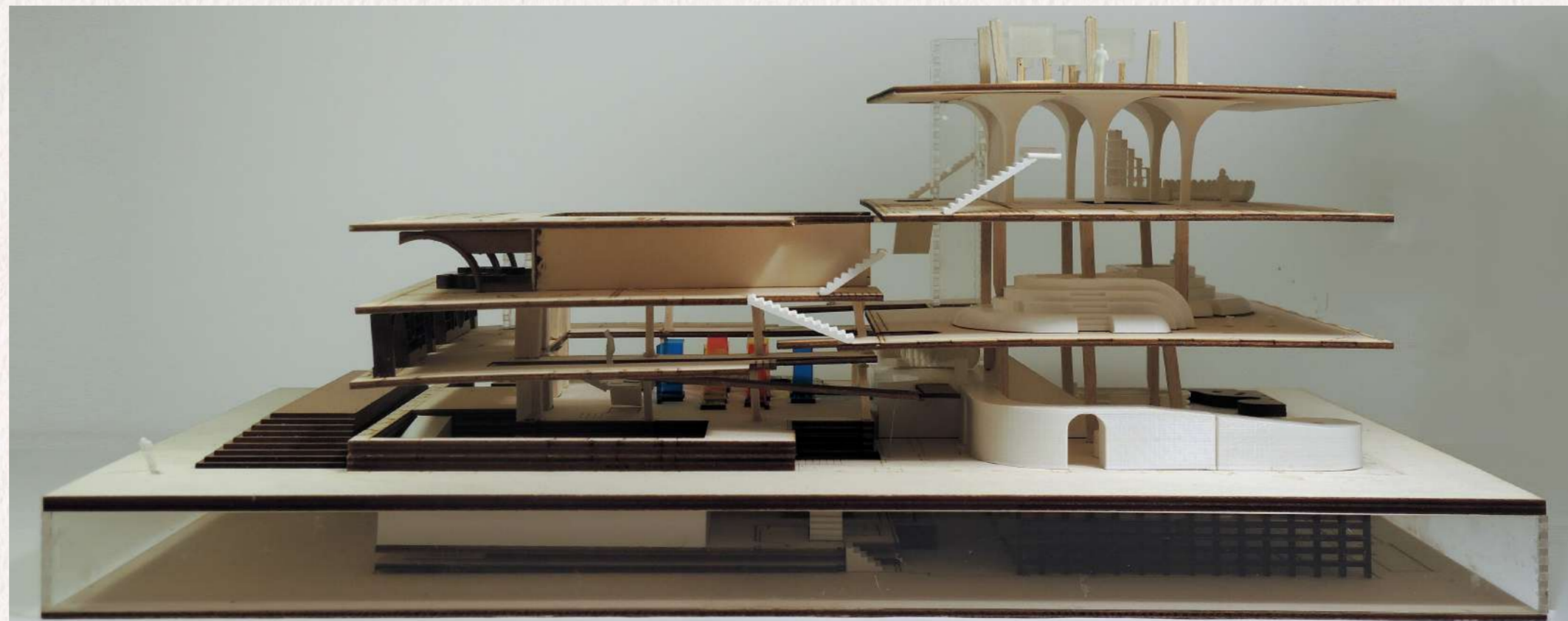
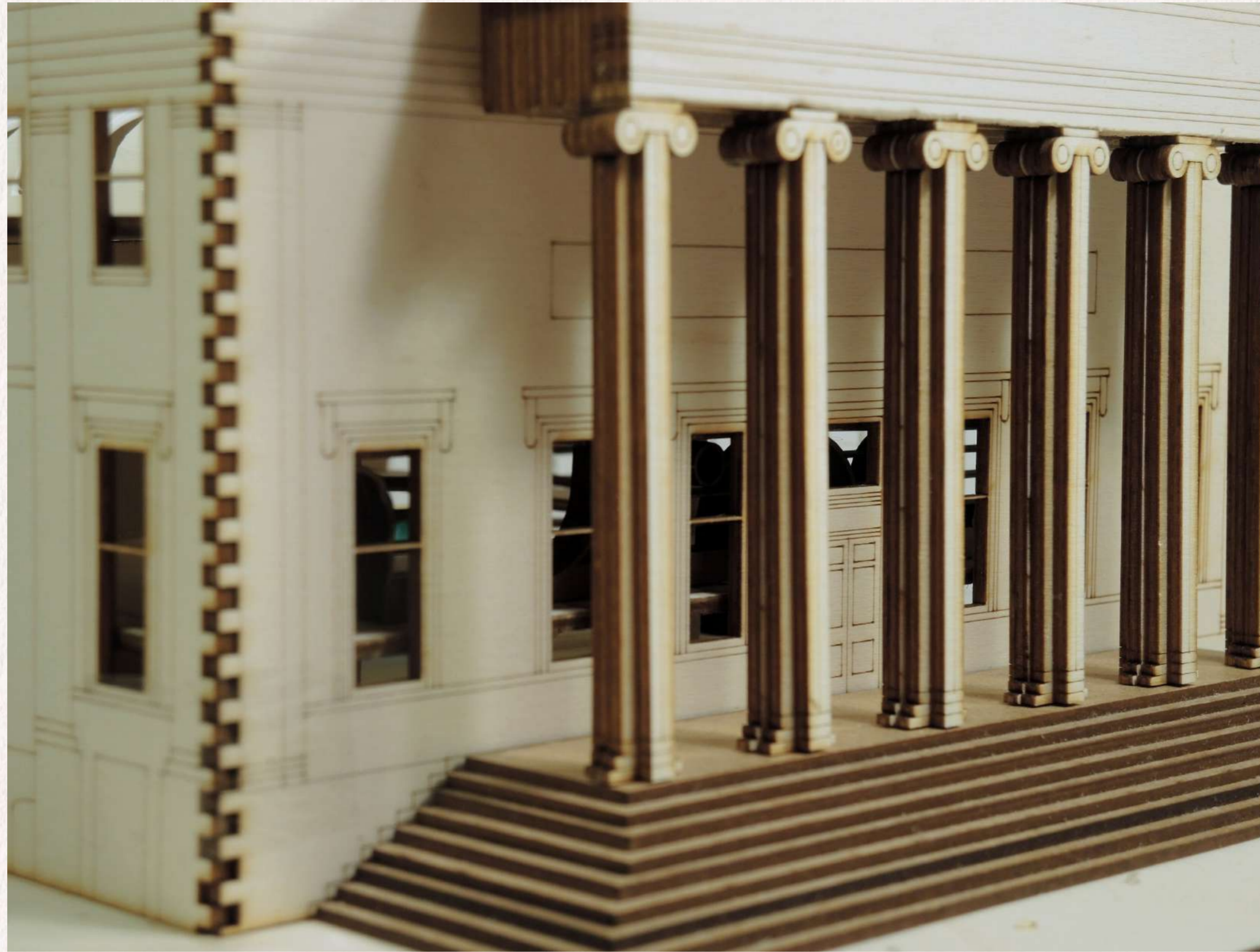
1. PROCESS



MODEL MAKING

In the initial stages of my model making process, I started with the external structure. Using a simple but effective comb joint, I was able to create the walls so that mock-up floors could be placed within the space, making it so much easier to explore different layouts.

2. DEVELOPMENT



3. FINAL MODEL SCALE 1:100

