

phyto

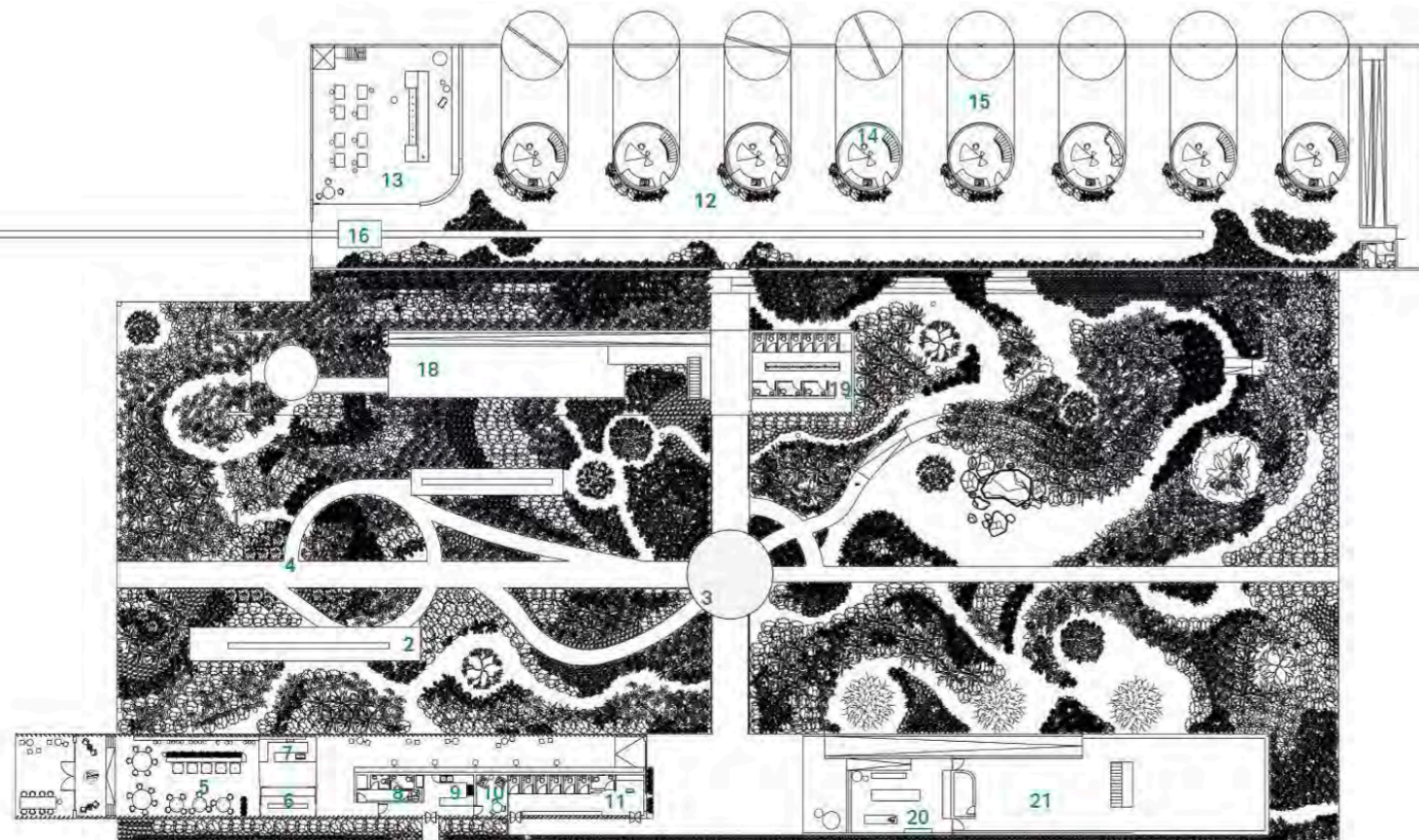
a circular creative space in the East End of Glasgow to come work and learn about the alternative uses of living organism waste.

introduction - The impact material choices can have on the future is undoubtedly significant. Integrating both design and ecology into one practice creates immense potential for change;

My concept, Phyto, is a multi-generational platform from which to stimulate the mind about our place as human beings within the context of the natural world, a place to consider our position and, ultimately, our responsibility globally. Phyto offers a space to come and learn about the alternative uses of plant waste and how we can benefit from these products in our day-to-day life; how the impact of using them, rather than wasting them, can affect the future of the planet. Phyto explores the role of designers and how they affect lifestyles, with a primary focus on plant waste and sustainability.

The site, Bellgrove Cattle Market, was originally a space for trading, sorting, and packaging meat. Initially, the cattle trade was quite a sustainable practice; the animal was butchered for meat from nose to tail and then placed in minimal packaging. The waste created was then recycled into other objects such as leather and broth. The abattoir was abandoned as new linear farming, and slaughter processes came into practice moving away from the original less wasteful model. I intend to recreate a cyclical ethos focusing on the needs of today. My concept splits the site into six zones, **the garden, eatery, design residency, maker space, exhibition space and retail store**. The movement through the spaces reflects the circularity of waste, each area leading to the next in physical terms, following the evolution of the waste by-products in the process.

phyto
/phyto/
- prefix
of a plant;
relating to plants



GARDEN LEVEL scale: 1:500

- 1 show garden
- 2 open air seating
- 3 center trellis
- 4 elevated garden pathways
- 5 eatery
- 6 show kitchen
- 7 serving counter
- 8 eatery toilets
- 9 pot wash
- 10 kitchen staff space
- 11 toilets with changing tables
- 12 design residency
- 13 workshop
- 14 singular work studios
- 15 pod gardens
- 16 moving carriage
- 17 carriage platform
- 18 sheltered outdoor maker space
- 19 toilets
- 20 retail space
- 21 sunken outdoor gallery space



1 - Gif showing zoning.



2 - Site and sound analysis video.



For the platforms in the garden I used concrete alternative "Sea Stone" made of **seashell waste** produced by Newtab-22.

the central garden

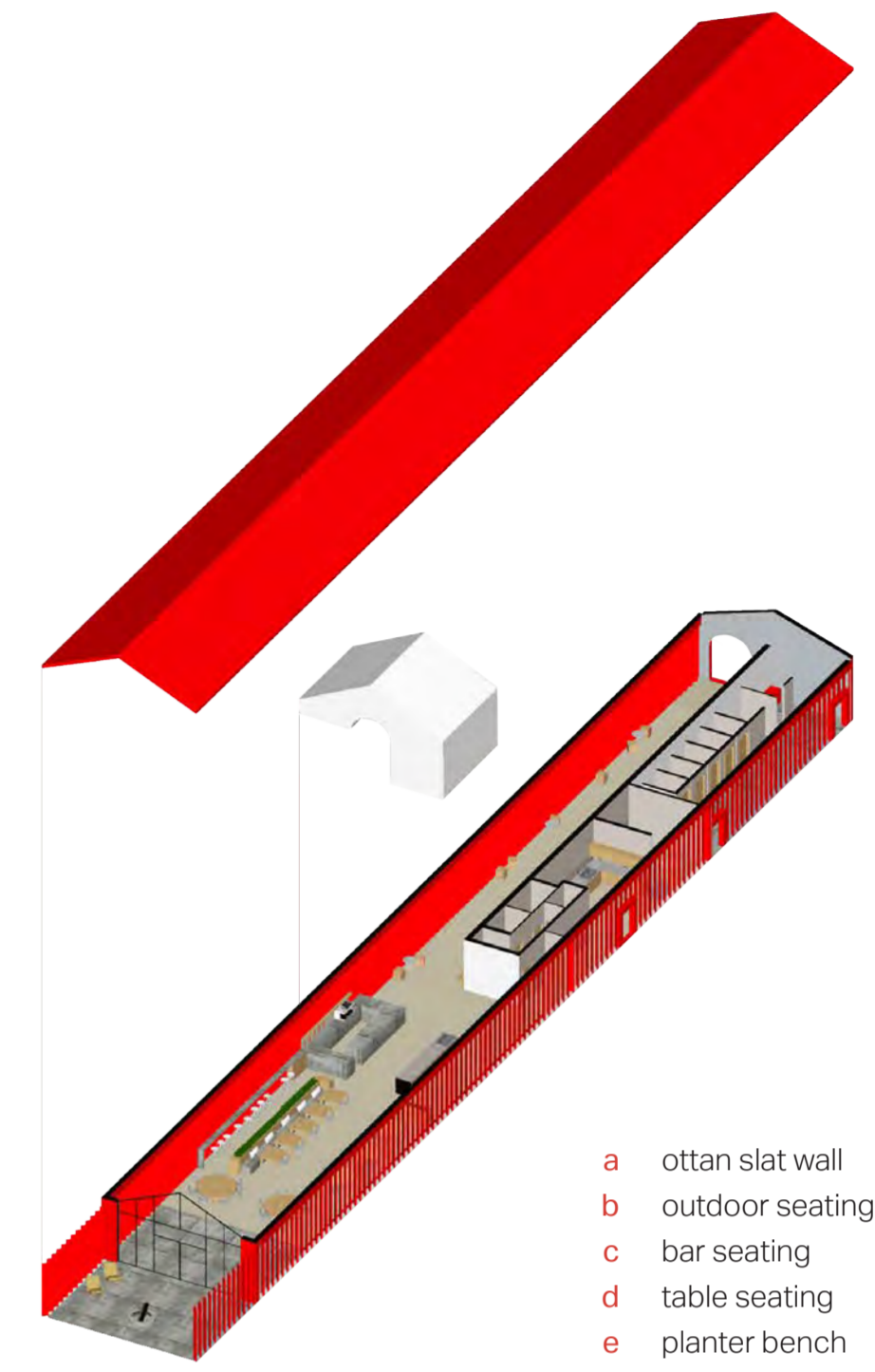
is the starting and endpoint of the **circularity** concept. Its purpose is to showcase edible and non-edible plants that produce food and raw materials, creating the critical by-product waste. The centric tubular trellis is a natural reception designed to provide a place for tranquility when first arriving at the centre. Sheltered corridors neatly intersect, leading to further points of discovery. This open green space contains a mix of indigenous and climate-appropriate flora and fauna to be viewed from ground level and elevated pathways, offering a controlled flow through the area with different focus/learning points en route culminating at a suspended viewpoint across the vista.



the eatery is a space to convene, to socialise and eat locally sourced plant-based food and drinks. Somewhere to connect with friends and family and meet other curious minds in a warm and welcoming atmosphere. Running as a six-month kitchen residency will allow a fresh team of innovators to showcase their **waste based menus** and create another form of revenue, simultaneously creating employment opportunities for the local community and the design residents. The eatery will offer a tangible way to experience products produced in the centre's circular system.

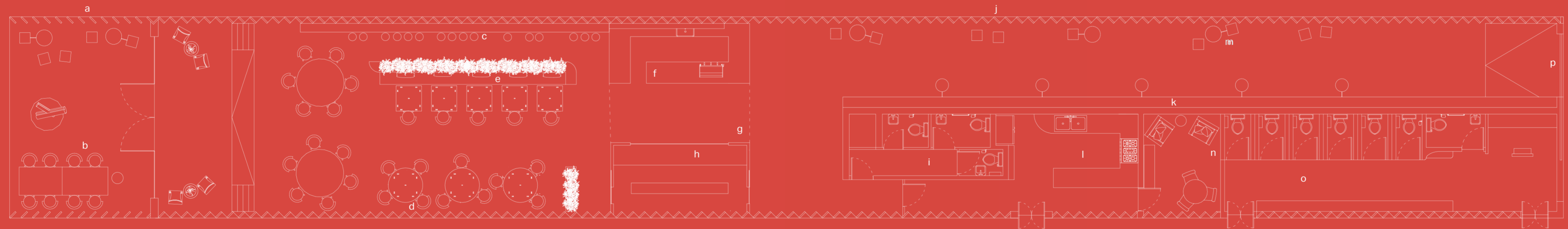


Modular seatings are made of waste recycled paper pulp inspired by Carolina Hardh's designs.



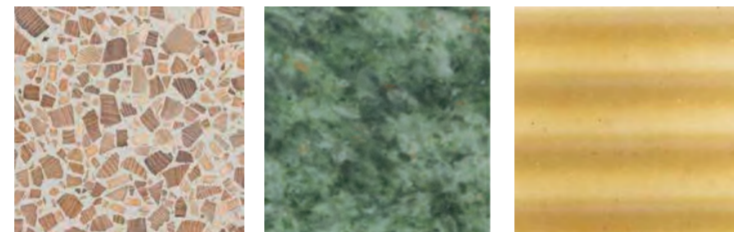
- a ottan slat wall
- b outdoor seating
- c bar seating
- d table seating
- e planter bench
- f counter
- g over hang
- h show kitchen
- i eatery toilets
- j ottan slat wall with glass
- k bench
- l pot wash
- m picnic seating and tables
- n kitchen staff space
- o toilets and changing table
- p entrance

The structure and interior of the space is designed with a mix of waste-based materials and high-end modular furnishings. The primary material of the eatery is a waste-based solid called "Tomato Jam" and is produced by a company called Otta. It is made of **waste lentils** and can be found in the form of slats covering the sides of the structure.



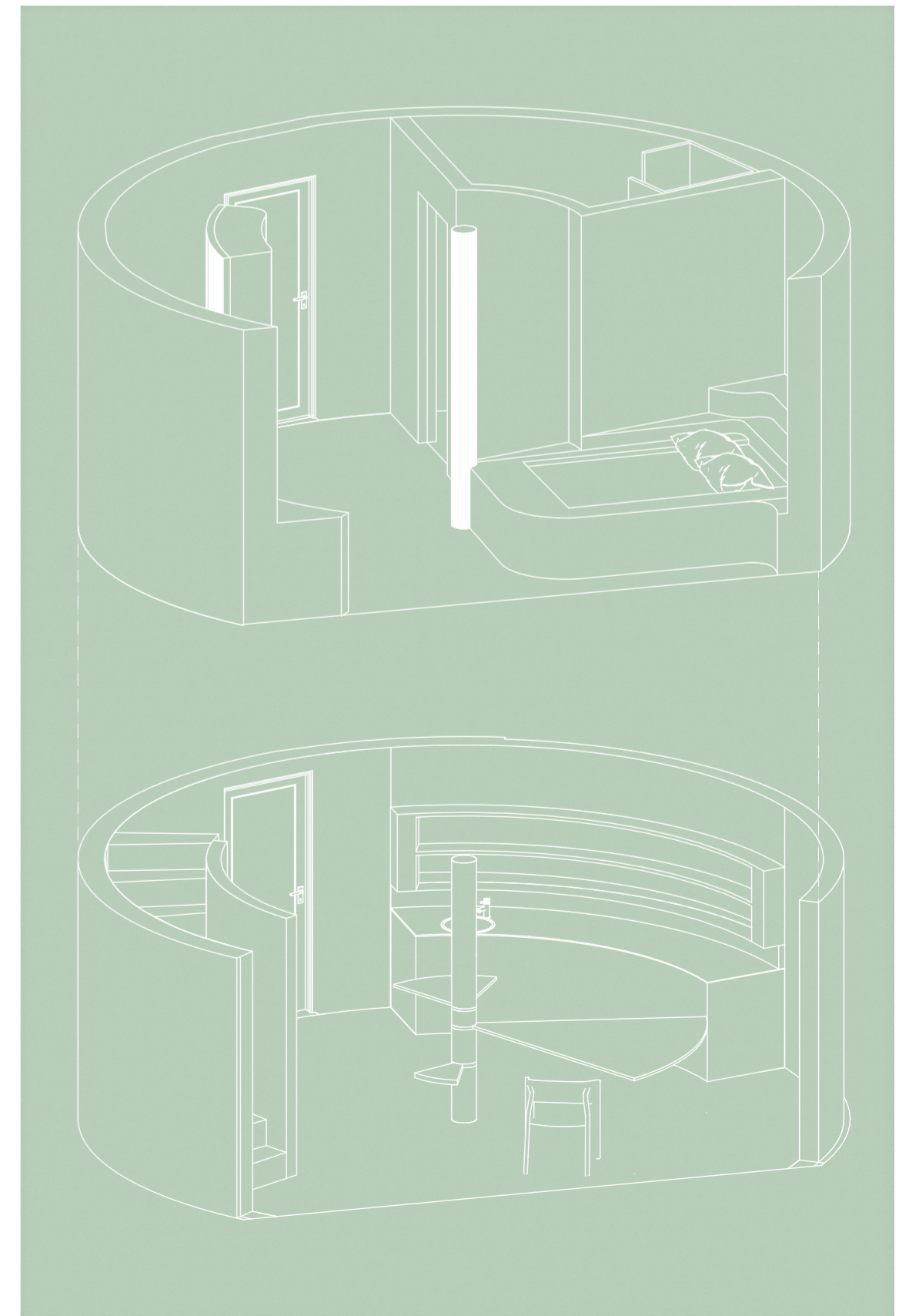


The primary material of the pods is a **waste rice** based material called 'Milk' by Ottan, the material encompasses the circular structures and collaborates nicely with the waste **based wood chip terrazzo** surfaces by Foresso and backsplashes made of **recycled glass from ovens and microwaves** by Snohetta.

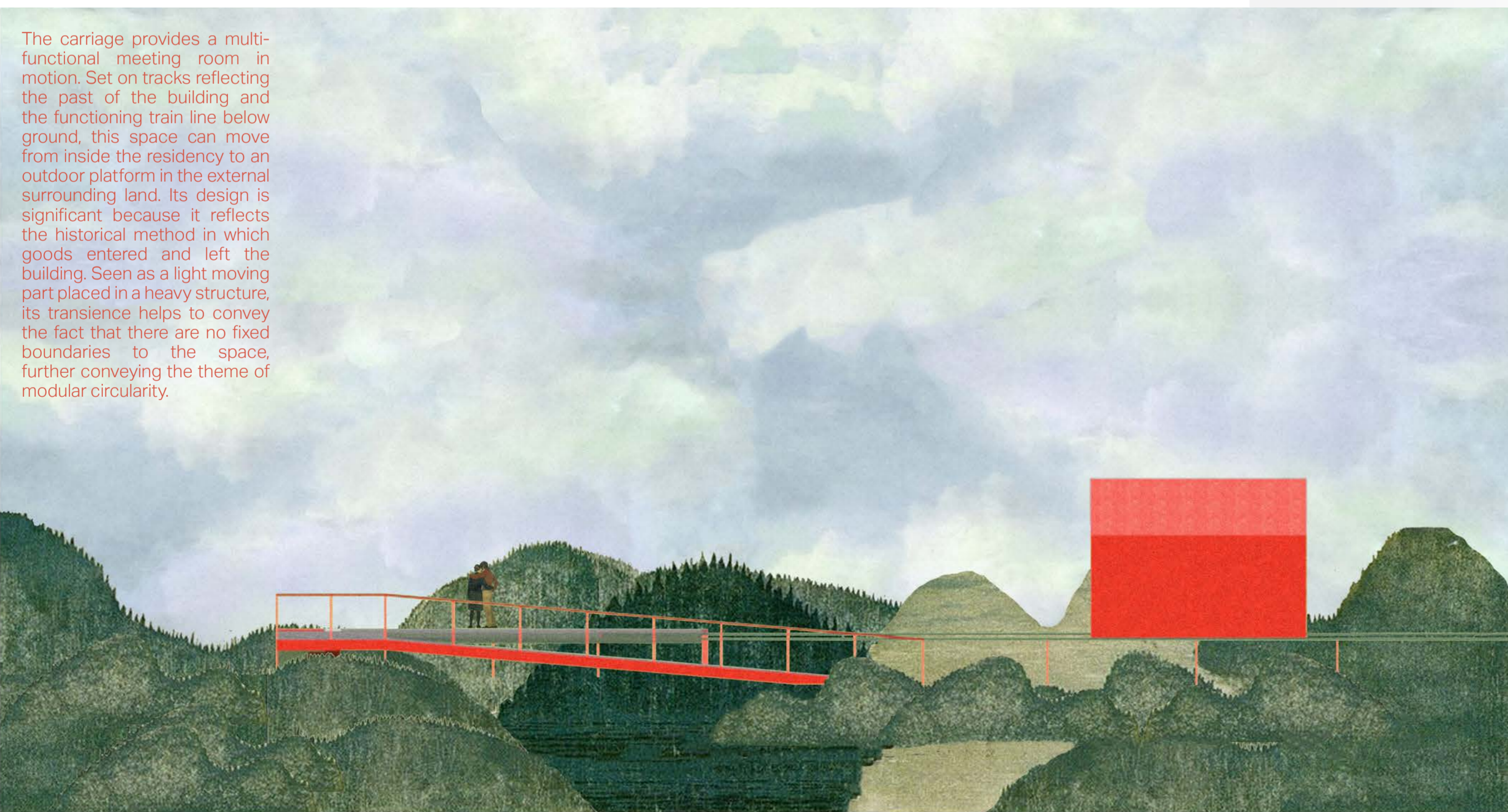


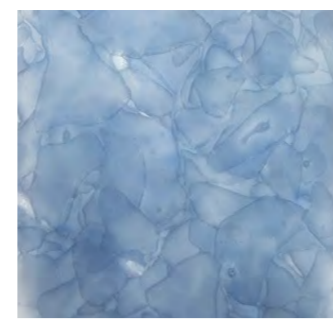
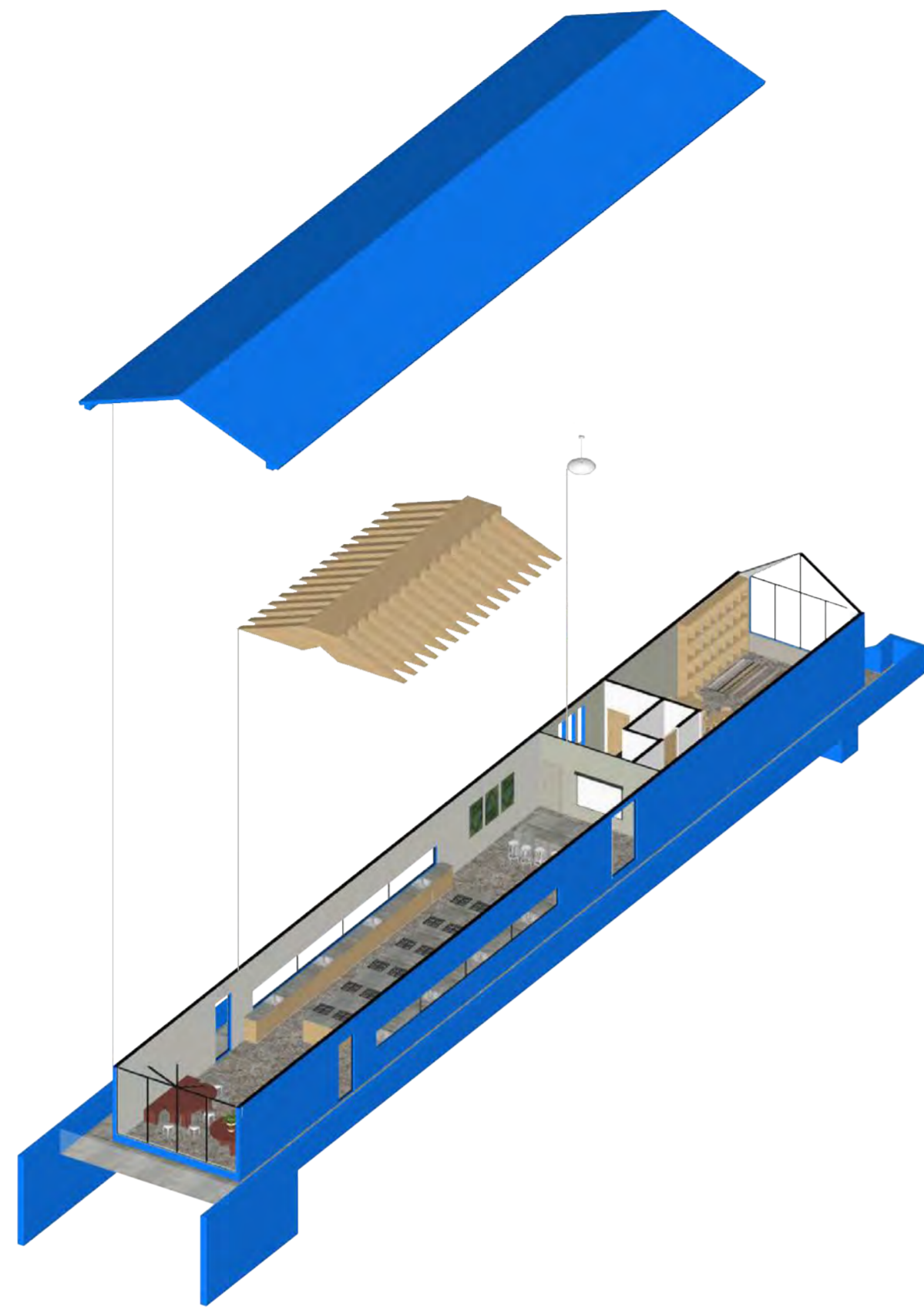
the residency programmes will support artists and designers as they focus on a single creative project. It is a full-time, structured programme that provides residents with a space, innovative tools, and access to leaders in the fields of waste, sustainability, and design. The design residencies will explore particular **bio-materials development, waste/sustainability research, community projects**, etc. The spaces will enable concentration and experimentation while also being open to the public to peek in from a distance.

Each resident is given a modular pod made of waste-based sustainable building materials, containing a workspace on the ground floor and a residential studio on the upper floor. The pods are designed as private retreats with individual courtyards, allowing a place for contemplation and innovation in solace. This is a place to quietly develop ideas alone, in contrast to the industrial-scale communal workshop studios where conversation and critique are welcomed.



The carriage provides a multi-functional meeting room in motion. Set on tracks reflecting the past of the building and the functioning train line below ground, this space can move from inside the residency to an outdoor platform in the external surrounding land. Its design is significant because it reflects the historical method in which goods entered and left the building. Seen as a light moving part placed in a heavy structure, its transience helps to convey the fact that there are no fixed boundaries to the space, further conveying the theme of modular circularity.



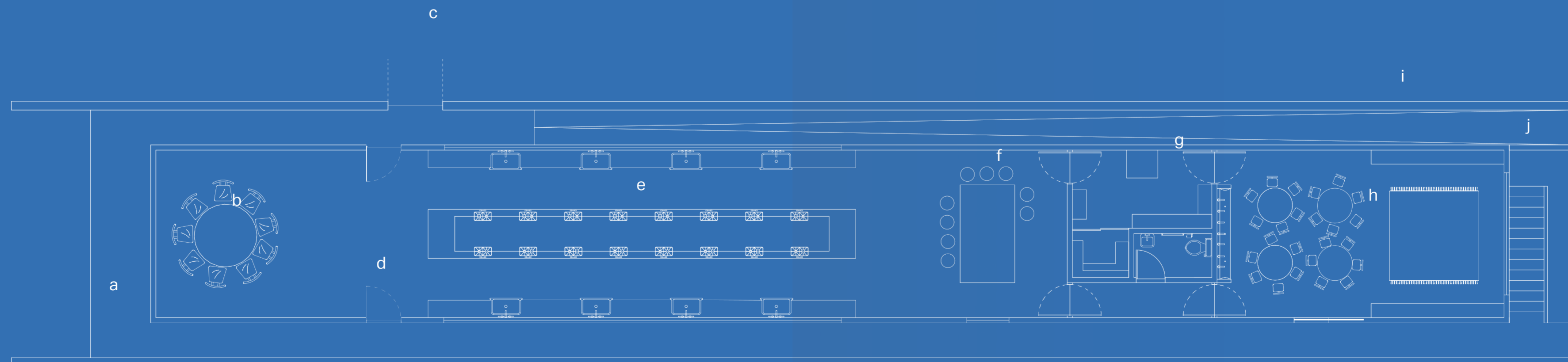


Bio-Glass
"Aquamarine", made
of recycled glass,
created by coverings



the maker spaces

are zones for people of all ages to learn how various forms of waste can be recycled with a focus on communal learning and education through experience. The indoor spaces comprise of kids and adults areas with sinks, stoves and work surfaces for hands on participation. They allow visitors to be involved in activities such as **cooking with food waste, minimal waste cooking, using food waste to grow your vegetables/fruit, and waste-based dye sessions**. Serving as research laboratories and areas for open discussion with experts, the maker spaces are also available for design residents to hold practical workshops related to their ongoing projects.



- a external elevated pathway
- b discussion table
- c pathway lading to ramp
- d entrance
- e activity space
- f display counter
- g storage
- h kids maker space
- i ramp
- j stairs



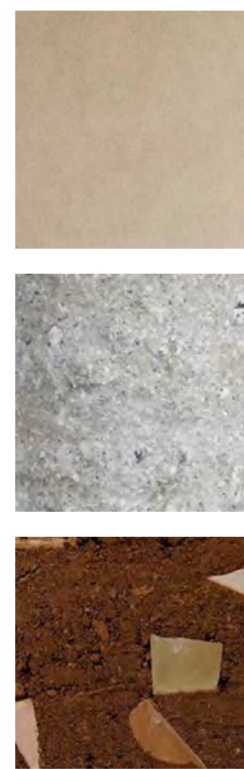
the exhibition building

is a permanent blank space that can house events and video-based showings as well as seminars. It is a neutral large open space for outside creatives and the design residents to come and showcase their work. Below this area is an exterior show space surrounded by garden plants and adjoined to the retail store.

the retail space

is a well-curated, design-led, affordable store that promotes the circular economy at home. It contains books, homeware, toys, seeds, and merchandise suitable for all ages, promoting information related to minimising waste. The store is also a place for the design residents to promote and sell their goods. With the spirit of a gallery of information, it is there to encourage visitors to take some of the ideas and concepts of Phyto home.

Above, view of building containing retail store and maker spaces in the evening. Top right, view into retail store at closing time. Bottom right, visual of exhibition space.



The insulation of the of these buildings are paneled with Honext a solid material made of waste card. The majority of the seating and surfaces of made of recycled waste materials, such as **oyster shells** and **rammed earth**.

