

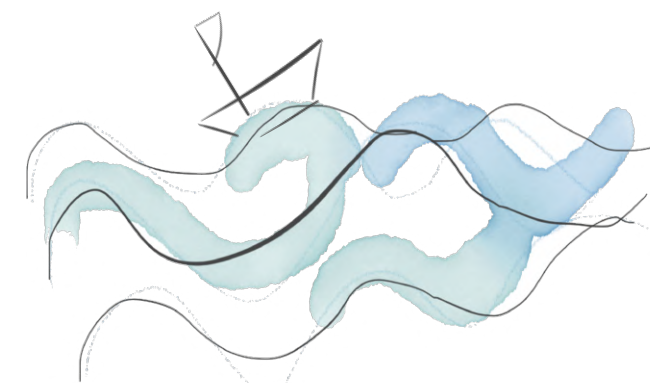
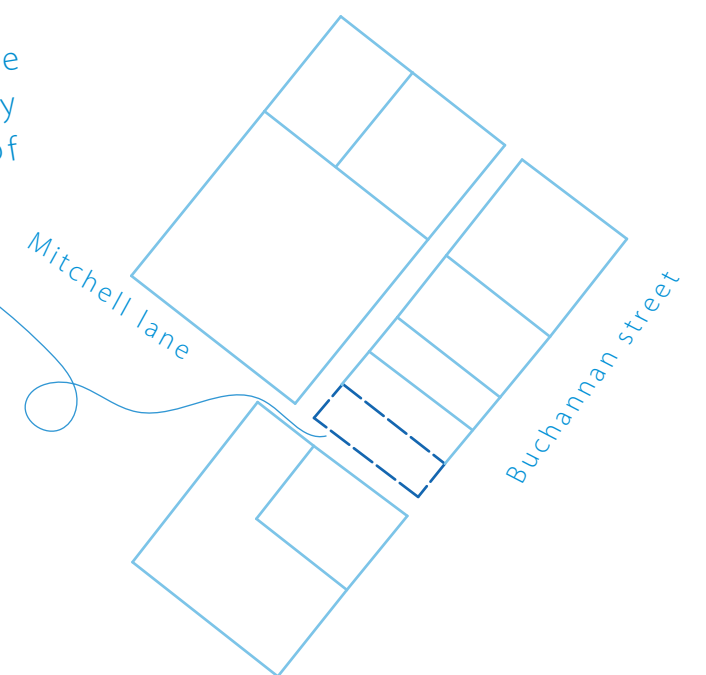


NENDO.

The Nendo proposed project is curated as an indoor vegetation and flower retail space that is influenced by environmental consciousness, ethical concerns and sustainability.

The space is made to habitat indoor vegetation in hopes to form a positive transaction between nature and consumer. Nendo is curated to invite all as they journey through the levels to gain the experience of the store. Nendo is located on Buchanan street inside the building known as the Former BOAC.

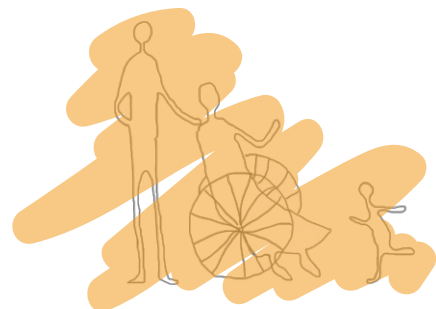
"Climate change is coming much much faster, we have seen such an extraordinary extreme weather pattern, if you consider this vastness of this universe this planet earth is just a small boat. If this boat is sinking then I think we will have to sink together" - [Before the Flood documentary](#)



Nendo front Facade Day time

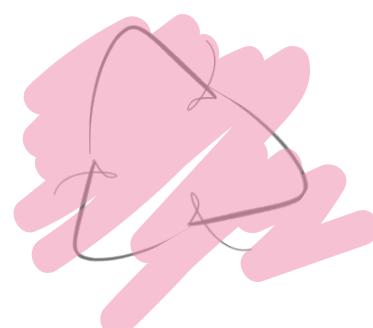


Nendo ground level Imagery



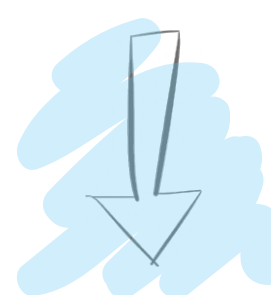
Ethos Embedded

Ethos embedded are conscious acts that are centralised around sustainability and eco-friendly design, this can be showcased through the design, materiality, brand identity. Ethos embedded has an obligation to host all users comfortably as we begin to understand movement and experience.



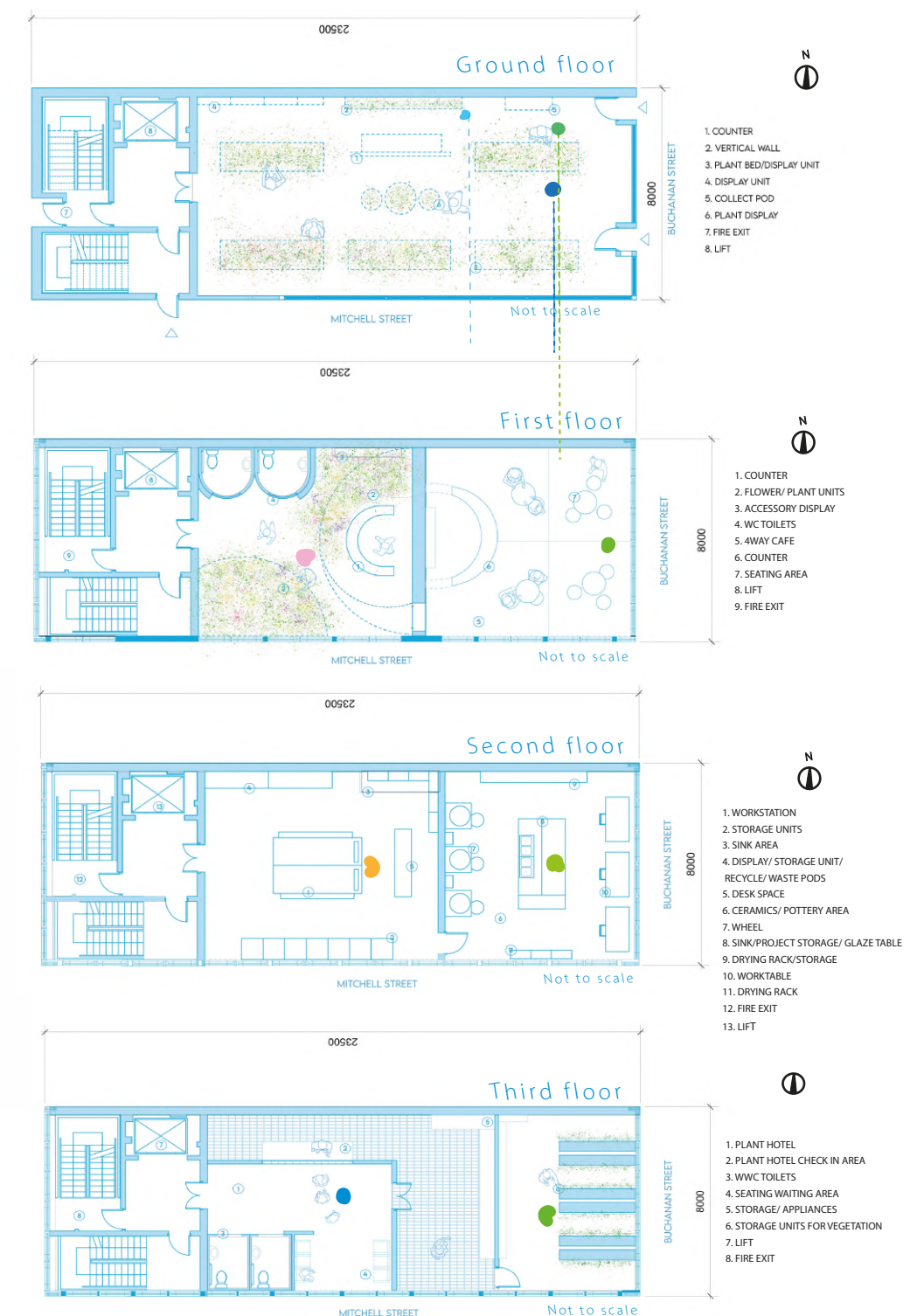
Activities

This represents the activities that are played throughout the store that inherit eco-conscious attributes practically in the way the store will operate as we introduce upcycling workshops, biodegradable pod stations, replanting, plant care workshops, charity funding, collaborations with sustainable plant potters.



Reduce Consumption

Represents the ways in which we reduce consumption and find ways to give back to the environment and nature. This through recycling, biodegrading plant waste, effectively reducing waste, energy saving acts, having reusable bags, reduction of over buying plants, watering schedule etc.



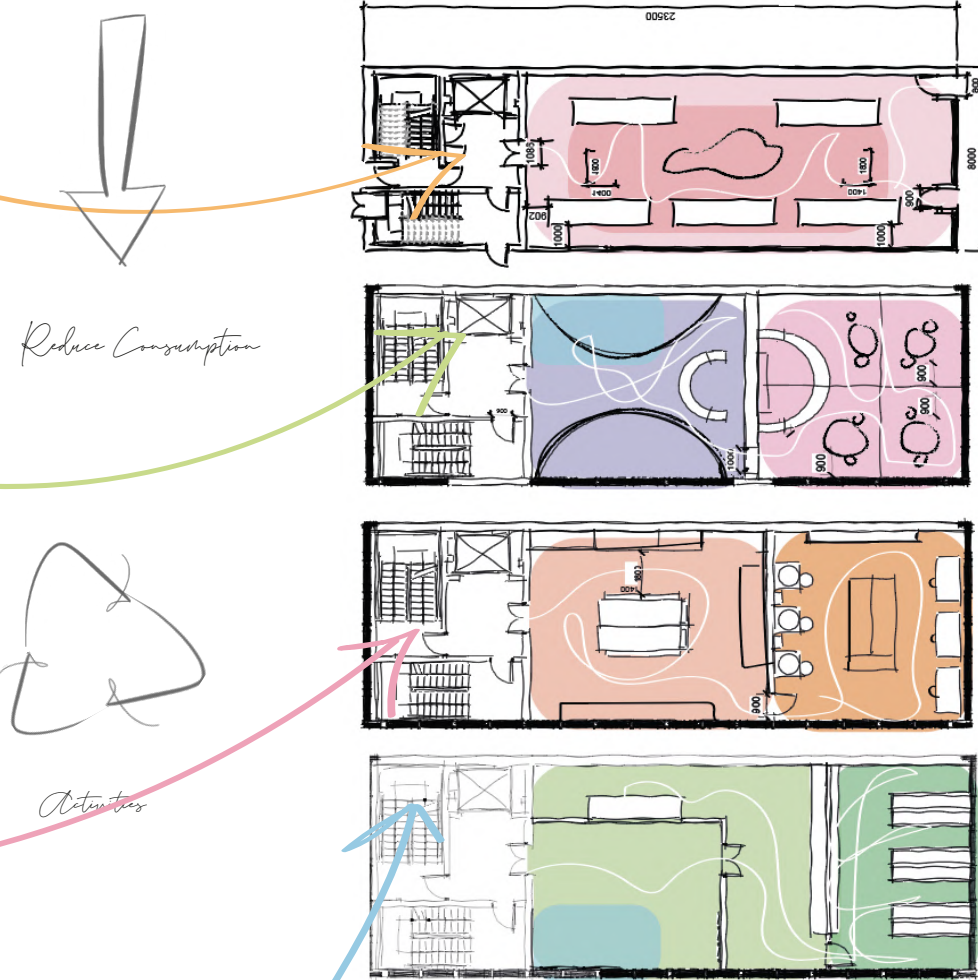
Sustainable practices

Level 0 embodies all things plants, a space inspired by greenery, a host where all are invited to gain a piece of life's nature. A space that taps into its natural environment where all can feel the sensory transition. A place where all can engage and connect with plants as we incorporate sustainable attributes, like eco-friendly plant pots, recyclable accessories, reusable bags etc.

Level 1 embodies community and reduced consumption as well as conscious consumption, a space dedicated to flowers where gift wrapping aims to be 100% recyclable and where all are welcome to the 4-way small café a space where ethical sourced food is shared and consciousness of waste materiality.

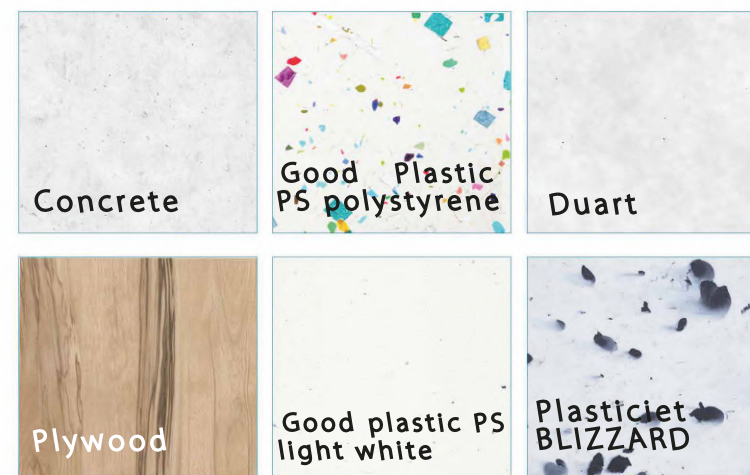
Level 2 embodies activities and reduced consumption, a space for curation, making, upcycling and education. Dedicated to workshops such as bouquet making, ceramics making, plant care consultations as this multipurpose space can be transformed for each workshop. Recycle pods, decomposable biodegradable stations as well as plant propagation workshops, encapture activities that are conscious of environmental impact, as places to educate and curate better relationships with vegetation.

Level 3 embodies, ethos embedded a function for the community of plant enthusiasts and all those who seek a plant hotel. A place to temporarily leave vegetation in the care of the store in times of absence. A space dedicated to care and communicate.



Nendo first level Imagery

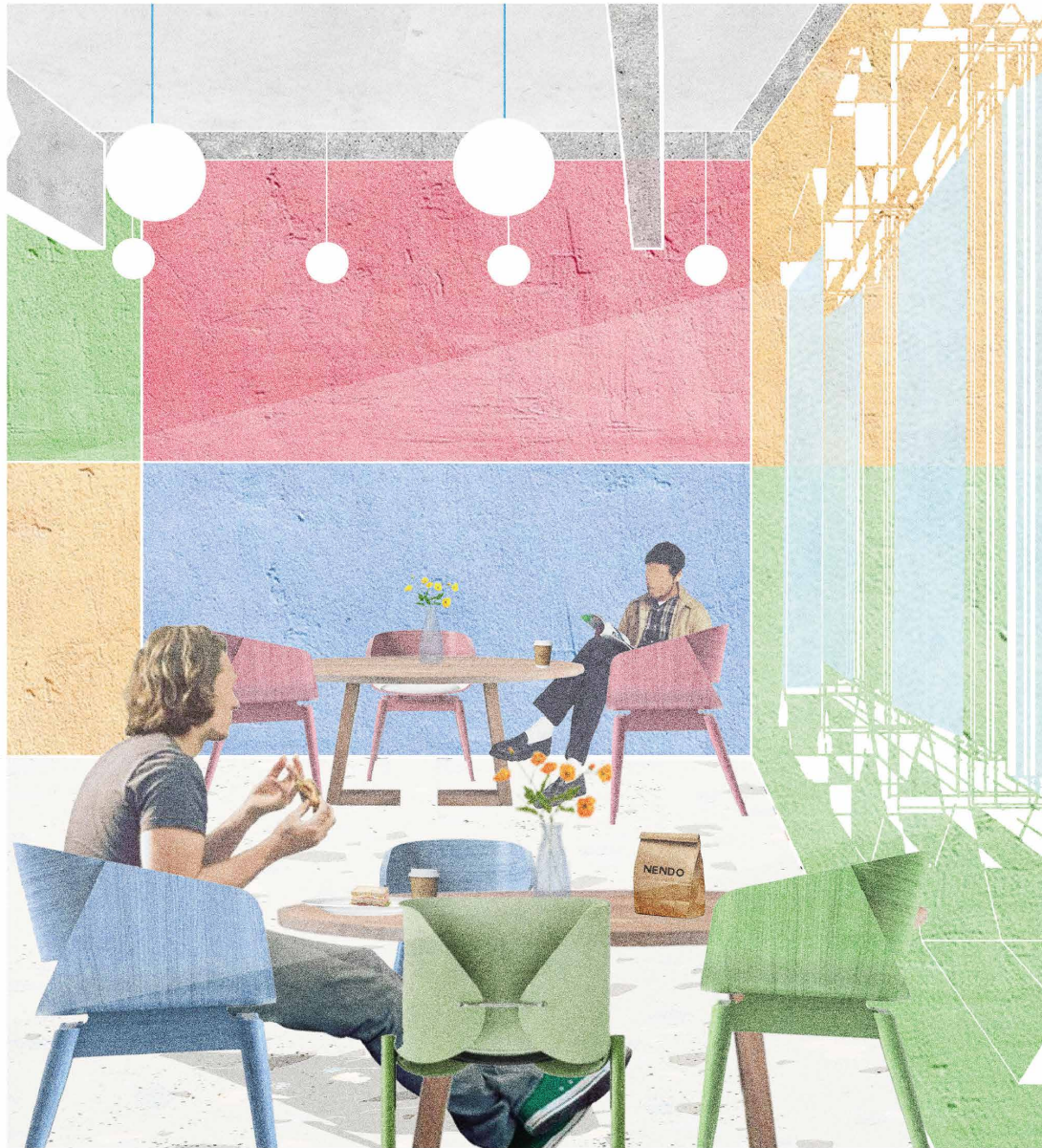
Aspects of Materiality



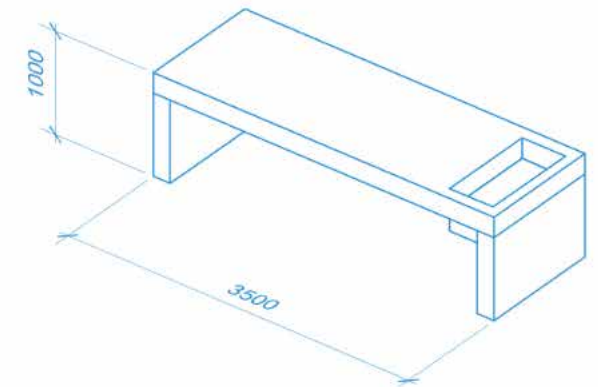
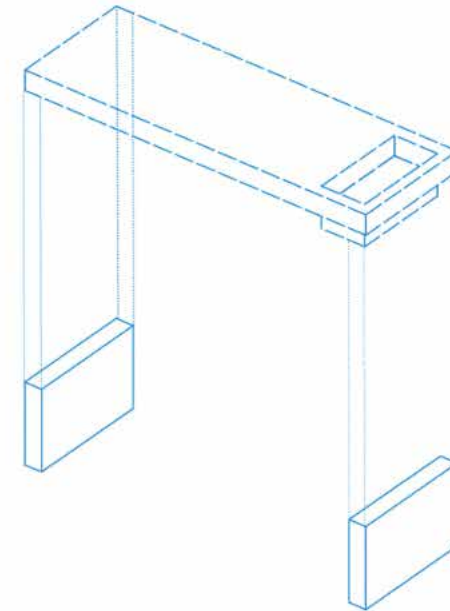
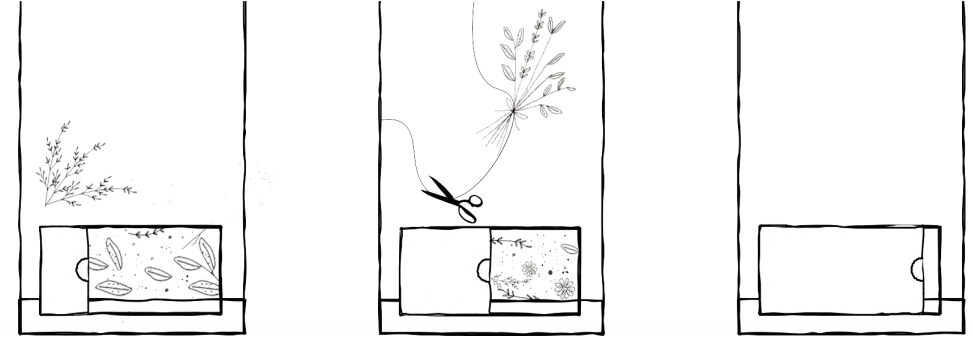
Nendo consists of environmentally conscious materiality that is embed with sustainability and recyclability



Workshop space- Bouquet making in session

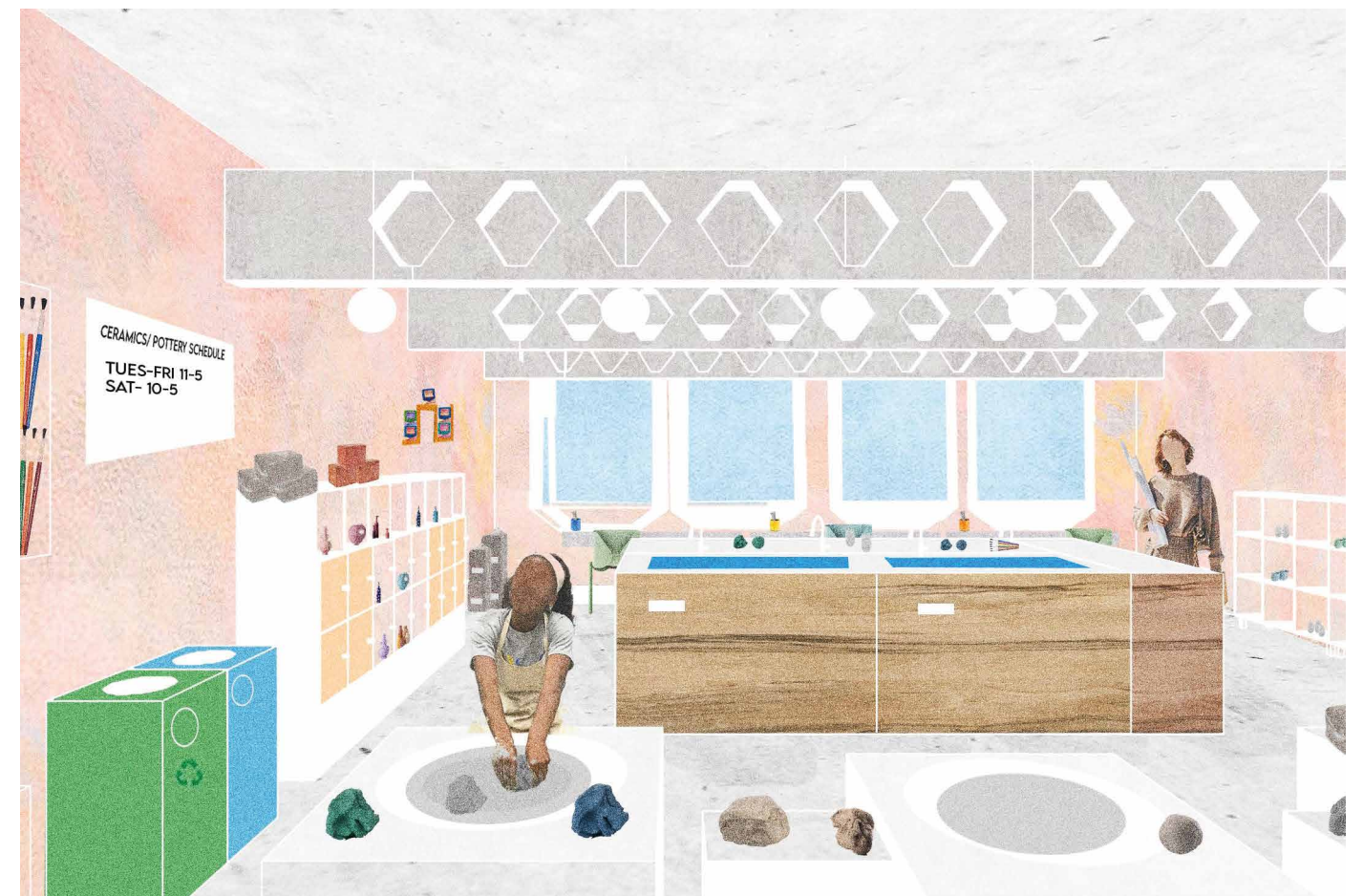
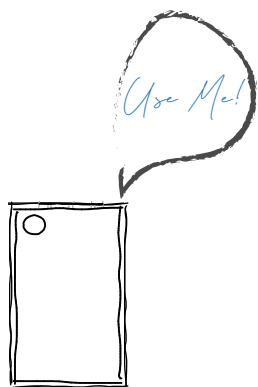
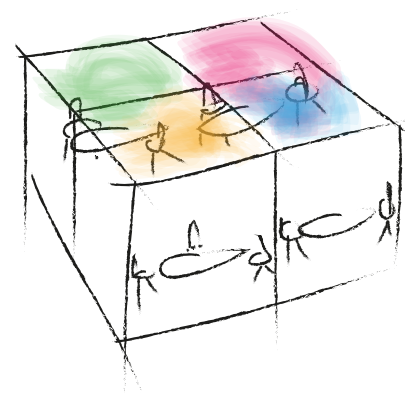
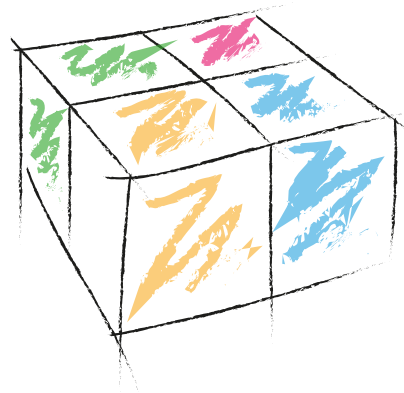


Nendo café Imagery



Workstations
3500 x 1000 x 1200

Workstation> These workstations have an inbuilt bin which will be used to collect the plant and flower remnants for the propagation and bouquet making classes. Which will be used for composting.



Ceramics & pottery making space imagery

Reduce consumption implementing sustainability through Energy & electrical saving acts



Reduce wastage implanting recycling & composting & biodegrading to reduce environmental impact

Giving back through funding tree plant originations and charities



Click and collect service for purchased vegetation

Section E-E
Scale 1:100

