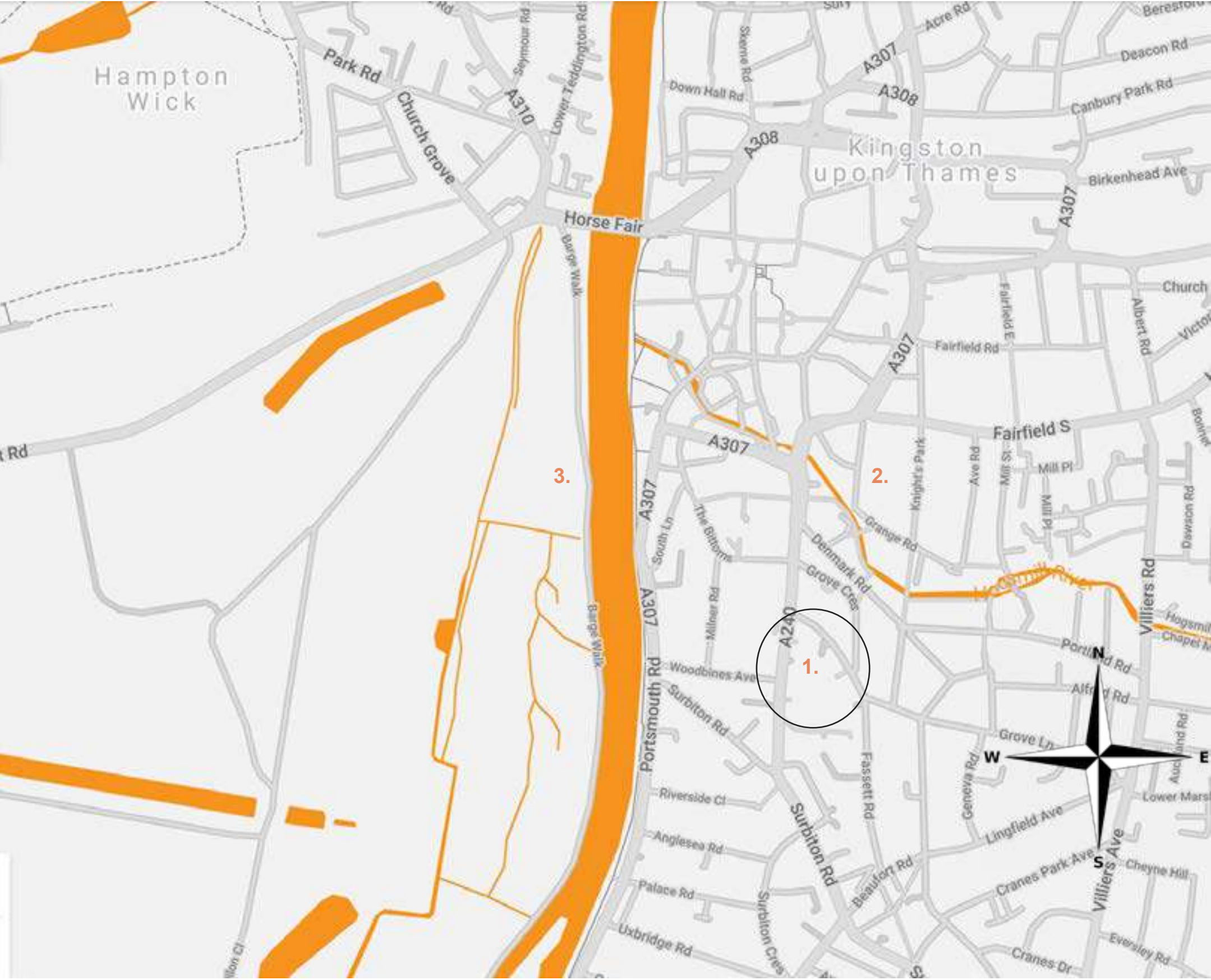


BKD BARCHIVE

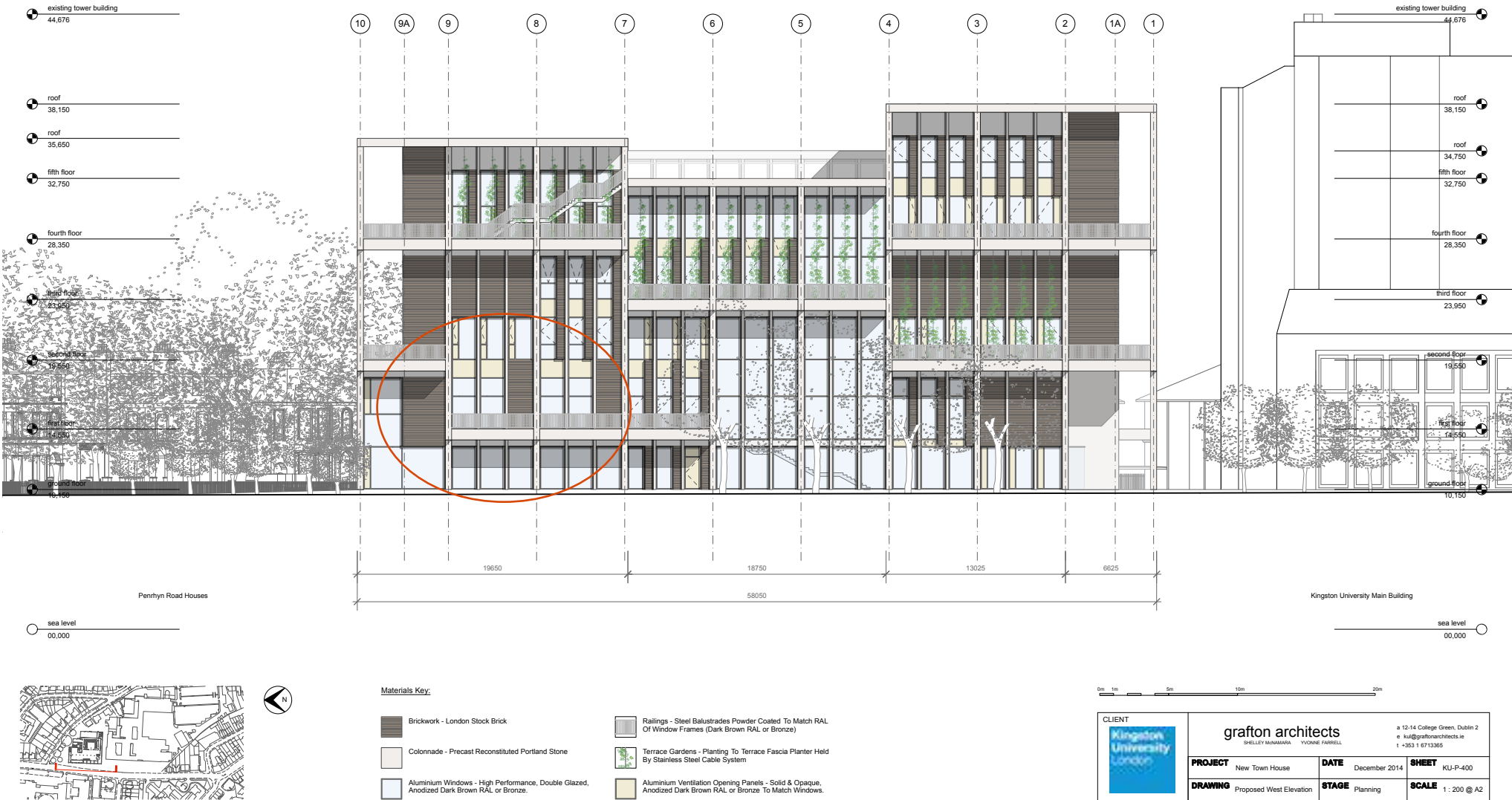
THE EXISTING: RESEARCH INTO SITE/LOCATION

The main design intent for this project was to create a social archive space for the works of designer Ben Kelly. The space needed a bar, private study spaces, wheelchair accessibility and a public archive space.

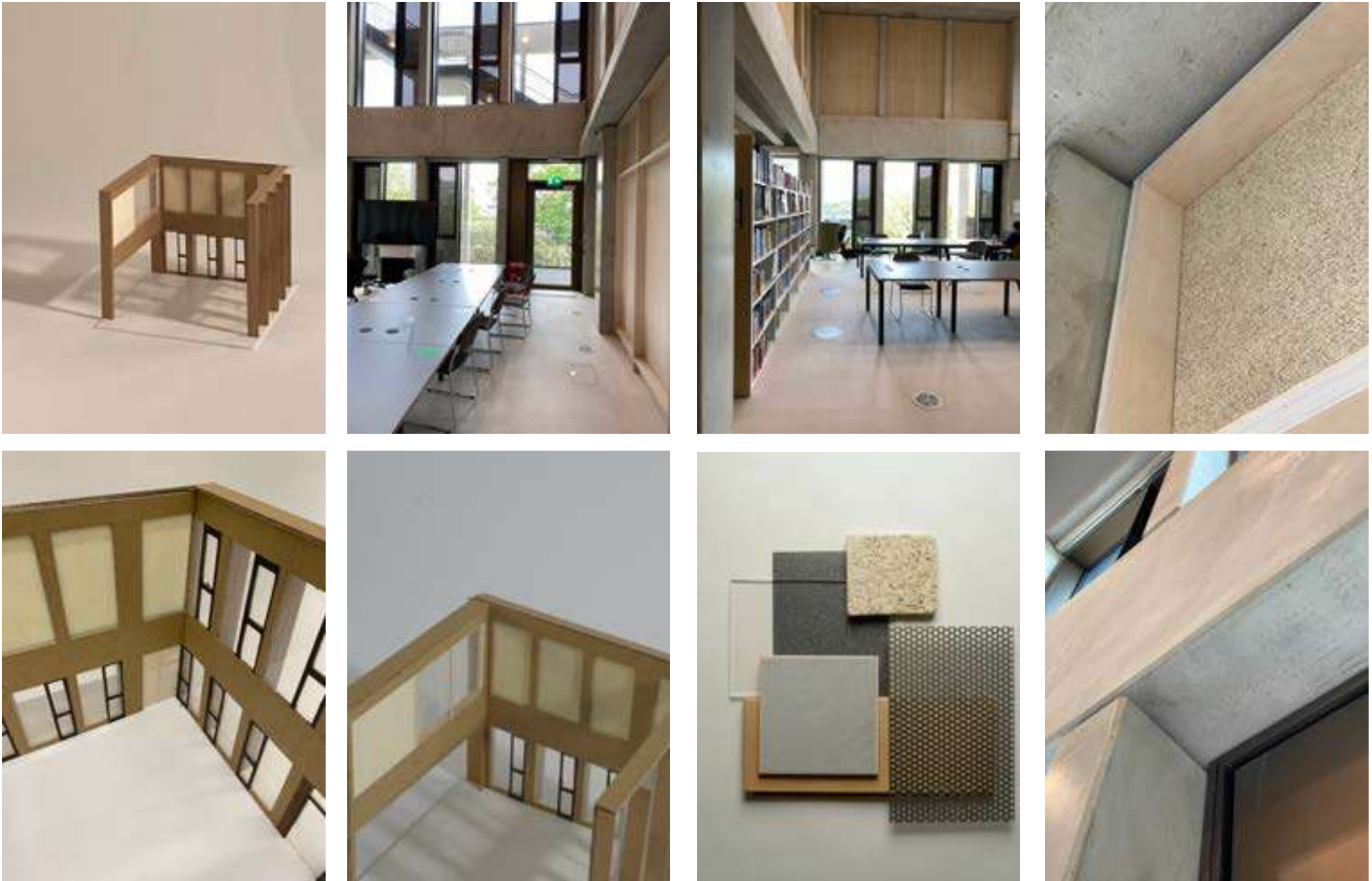
The site for the barchive is located in Kingston Upon Thames, United Kingdom in the Town house library. The space has dimensions of 8x8x8m and is located on the second floor of Town House, with a double height space and glass panels on the third floor allowing viewing of space from the upper level. There is an emergency exit located near the rear of the space towards the terrace.



- 1. The site: Town House Library, Kingston Upon Thames
- 2. Knights park campus
- 3. River Thames
- 4. Nearby places:
 - Hampton Wick (NW) 20 minute walk
 - Surbiton (S) 15 minute walk
 - Berrylands (E) 22 minute walk



Existing west elevation drawing (not to scale)



Existing model of site made @1:50. Images and details of Town House display the materiality and general environment of the site. A physical material palette shows the different materials part of the scheme:

Concrete, linonium, perforated metal, timber, glass and wood wool.



This collage shows the precedents we looked into for this project. Both looking at constructional elements and for the display and storage of the archive documents. Wanted to work with a visible construction allowing al- most a “forest of timber” to be created. Focusing on the unrevealing experience as the timber construction at first sight is a solid facade but upon coming closer opens up to an open and interactive space. Some of the key words presented below emphasise the space we wanted to create and will be shown more visually throughout our work.

1. Parochialkirche - Kuehn Malvezzi
2. Potemkin Theatre 2019 - Maich Swift Architects
3. HILA Pavilion 2014 - Digiwoodlab Project and University of Oulu Students
4. RUBIO Concept Store - -Masquespacio
5. Showroom Archetype - MORS Architects

These precedents also show how limited materials can be used to develop and finish a scheme rather than a larger variety of materials, something that drove this project greatly.

BKD BARCHIVE

THE PROPOSAL: ORTHOGRAPHIC DRAWINGS

GROUND & FIRST FLOOR PLAN, SCALE 1:50 @A2

1. Bar

2. First entrance and exit

3. Staircase to first floor

4. Archive and storage units

5. Second entrance and exit

6. Wheelchair accessible study space

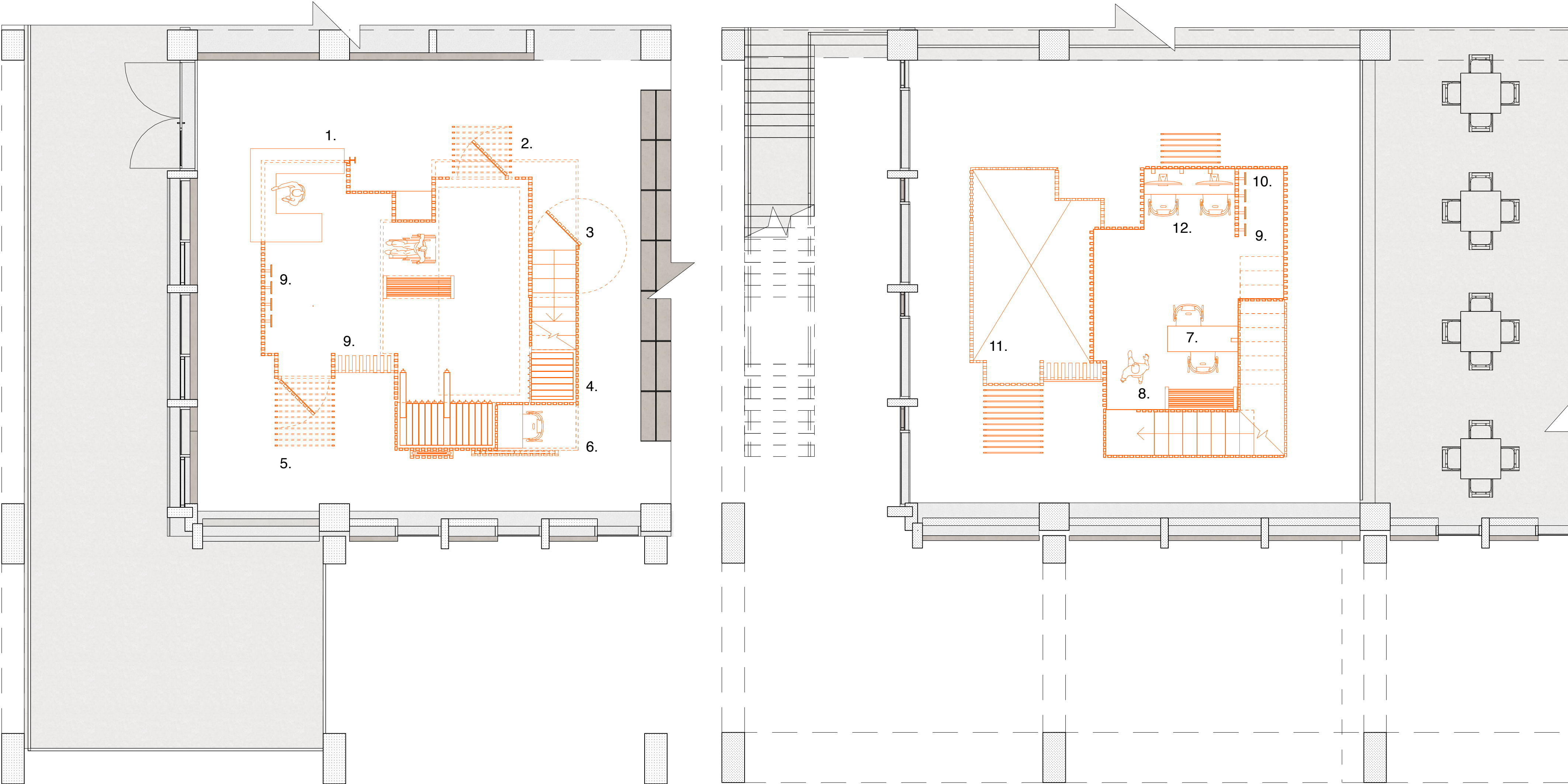
7. Private working desks

8. Private archive

9. Balcony

10. Display units

11. Double height space



BKD BARCHIVE
THE PROPOSAL: INTERIOR VIEWS



These interior views show the ground floor populated and also how the pavilion is situated in Kingston upon Thames with its outside views. Firstly one is met by the staircase leading up towards the first floor, there is an entrance way inside the pavilion and an protruding bar. Behind the pavilion there is work displayed, a second exit or entrance and a disabled access desk with digital access to the archive. The third image shows an interior view inside the space with the pull-out and pull-up archive storage and display systems.

What these images also show is how the space is made up of singular timber struts which show simplicity in the design. The entire scheme is made up of timber which has a clear focus on sustainability in limiting the different uses of materials but enhancing the experience with one. These also give an interactive dynamic with the outside and light patterns.

BKD BARCHIVE

THE PROPOSAL: AXONOMETRIC OF SCHEME & MATERIAL PALETTE



- 1. 5 mm orange linoleum
- 2. 64x48 mm timber beams
- 3. 2.5 mm green cast recycled orange acrylic

The materials chosen have warm tones and hues which contrasts town house. This was done with intent so that the pavilion stands out. The signature orange elements were chosen to relate it back to the client. The timber struts are used structurally and the lino is used in numerous parts of the scheme outside of the flooring for extra acoustic absorbtion.

The linoleum is 100% bio-degradable. Additionally, the acrylic chosen has been previously recycled and can be recycled again. Meaning that the materials are both sustainable as well as multi-functional in the space.

The limited material palette does not signify a lack of development of the design, however seeks to work in different ways with different materials, specifically timber and how that can be used both structurally and for spacial impact.

