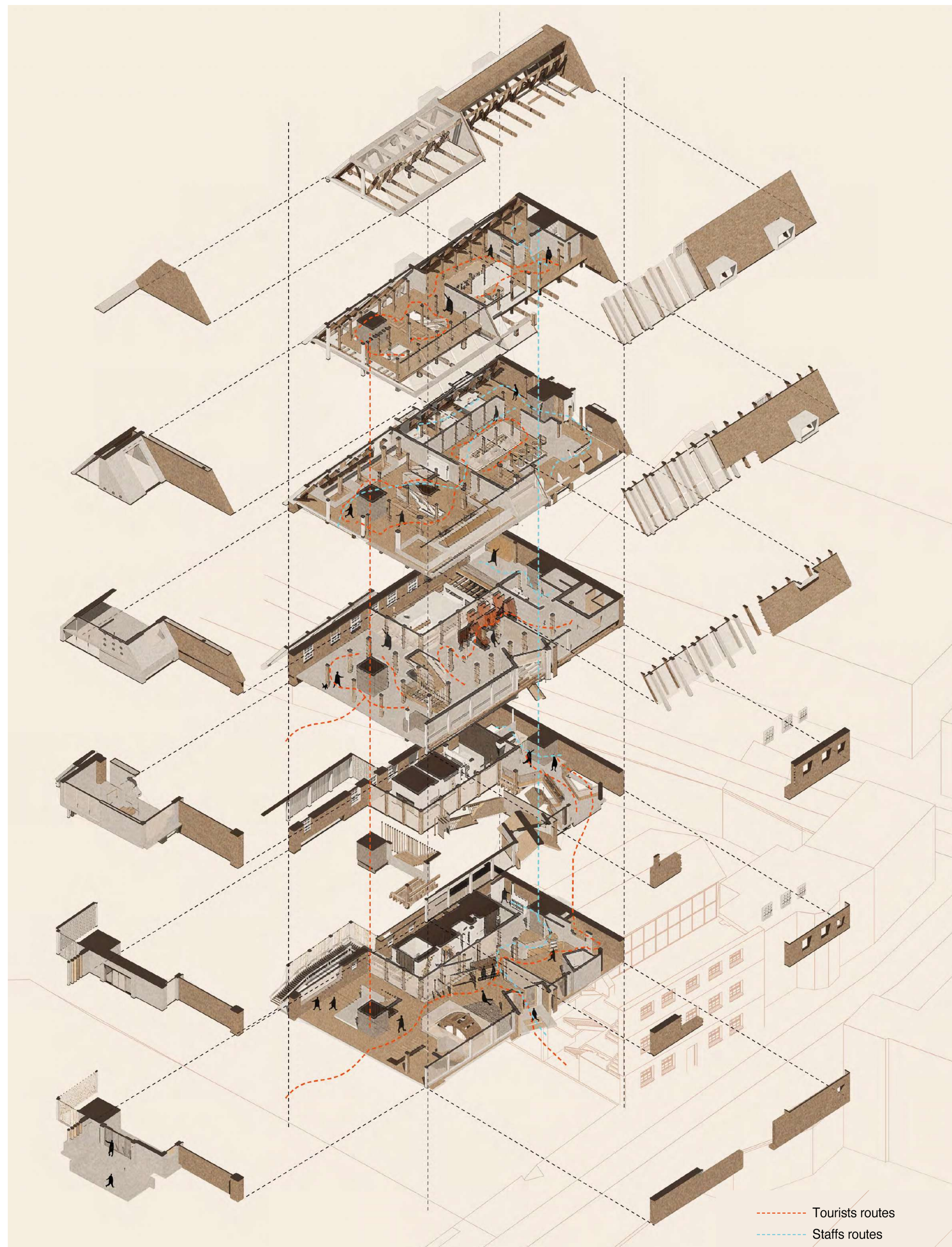


House mill (Fabric)

Xiangzhen Tan

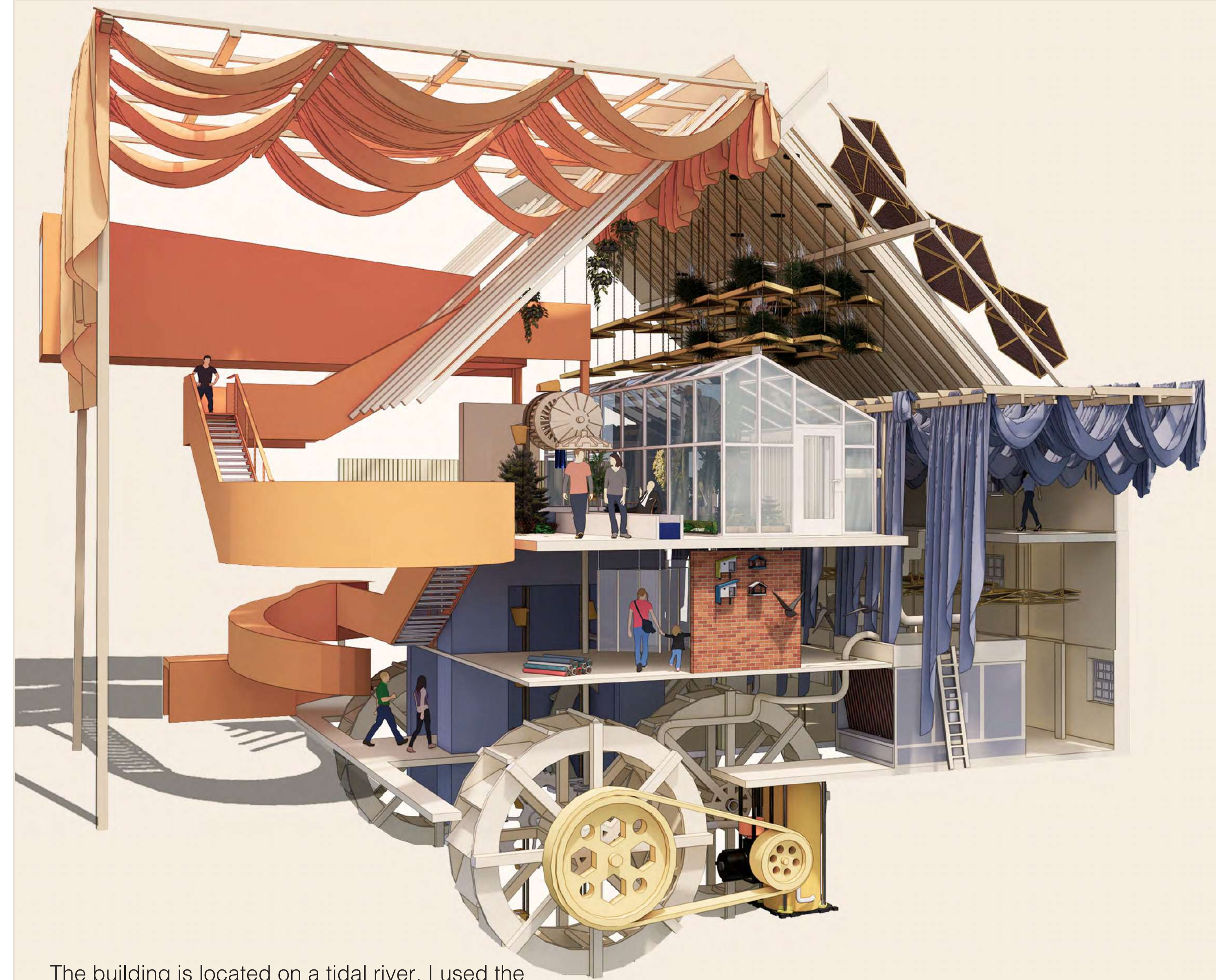
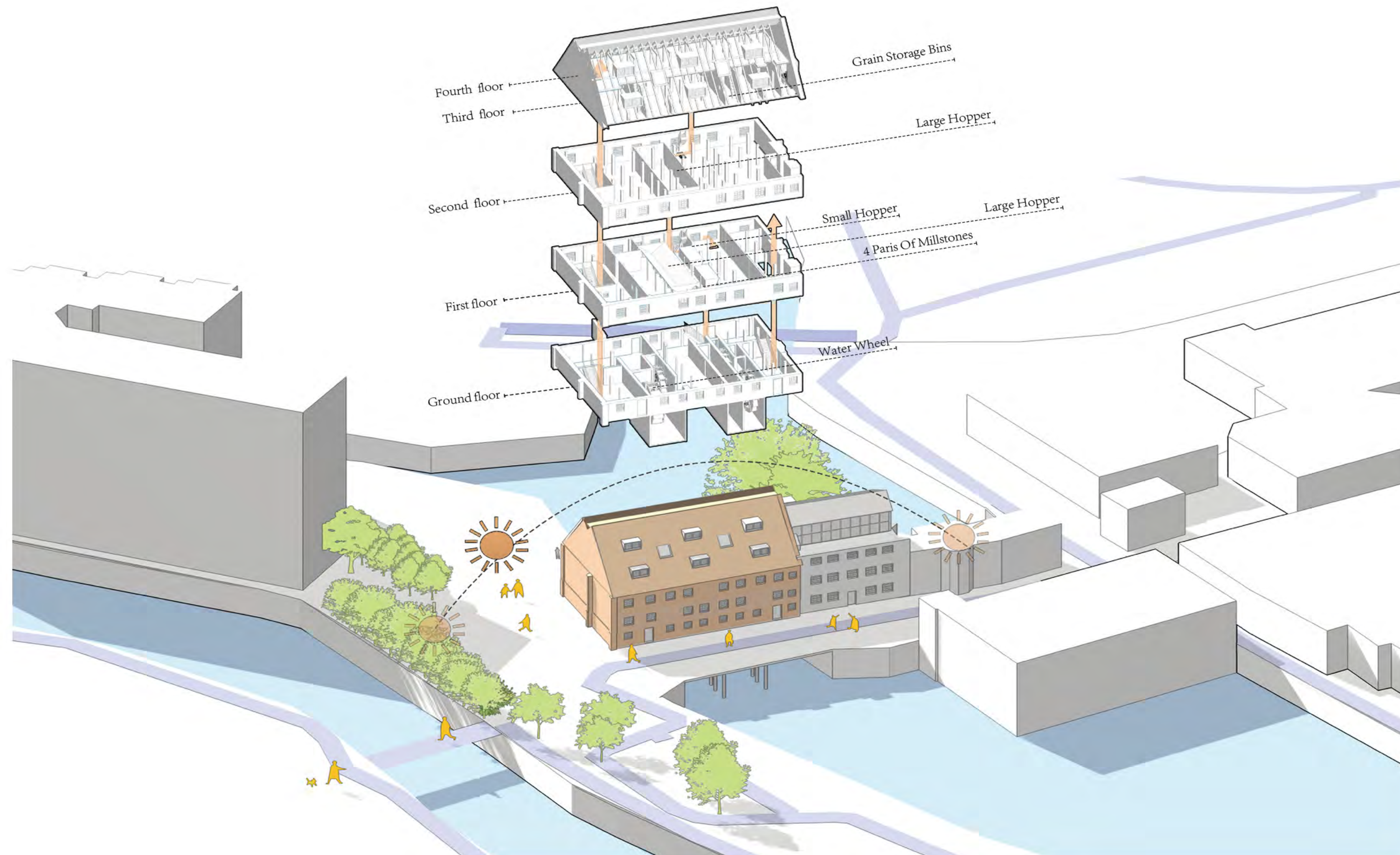
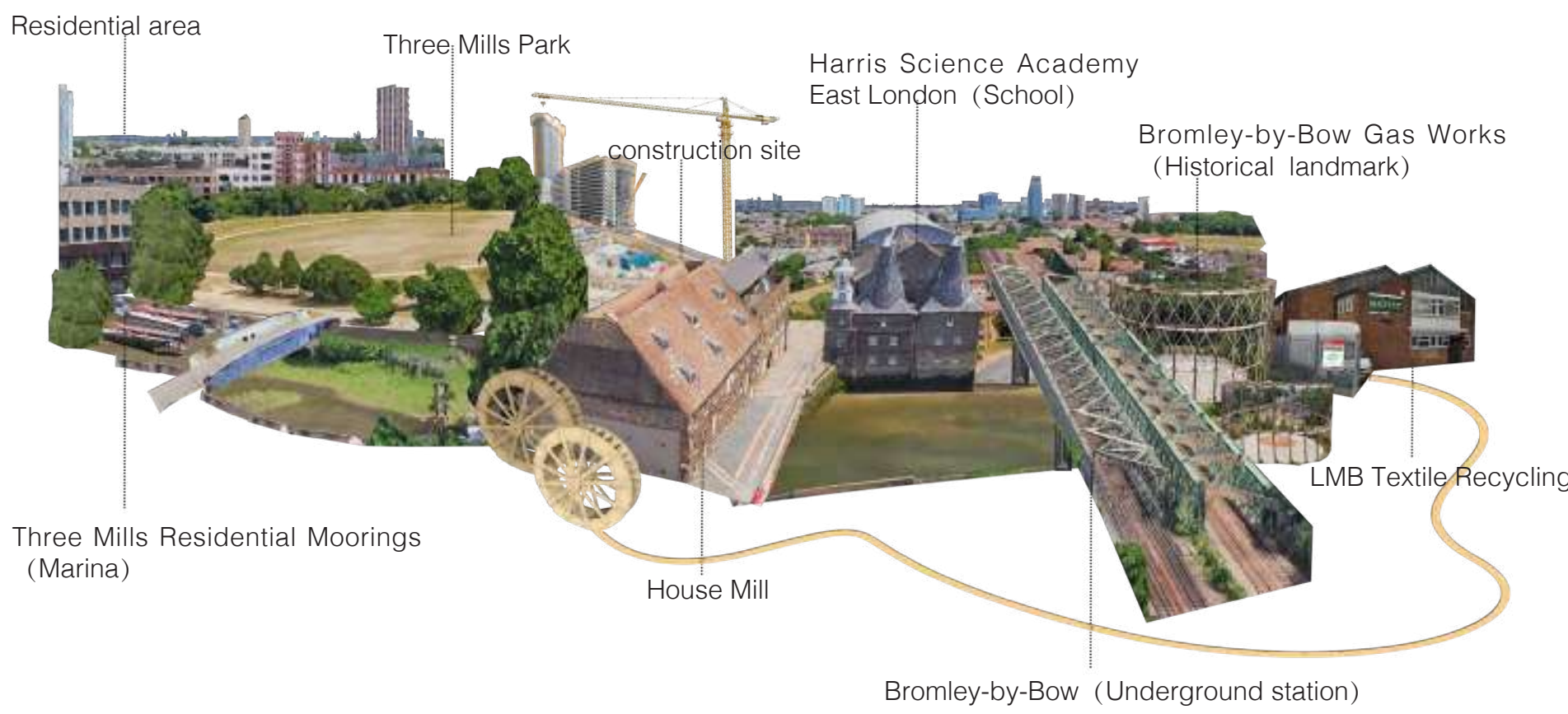
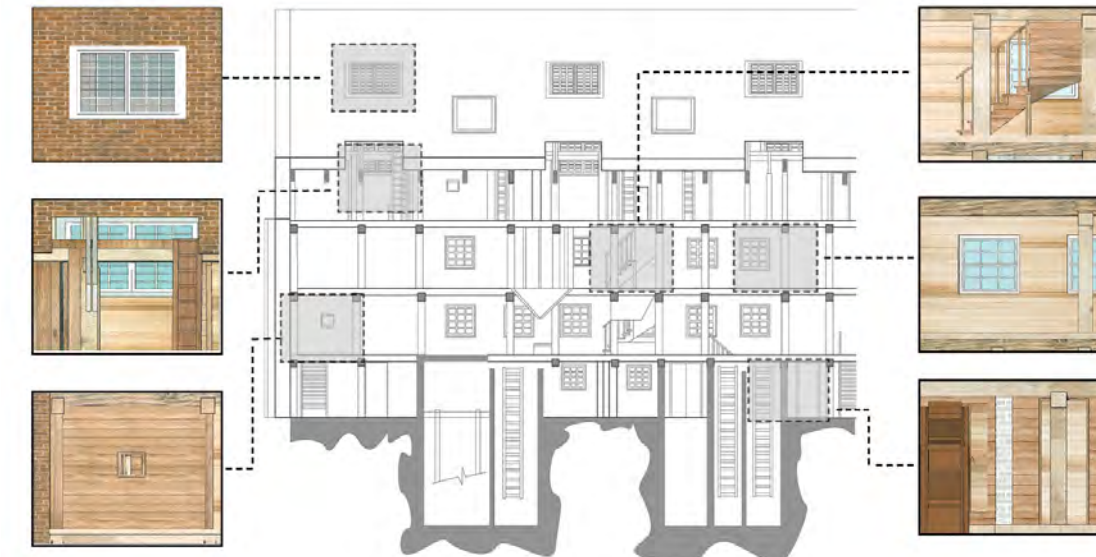
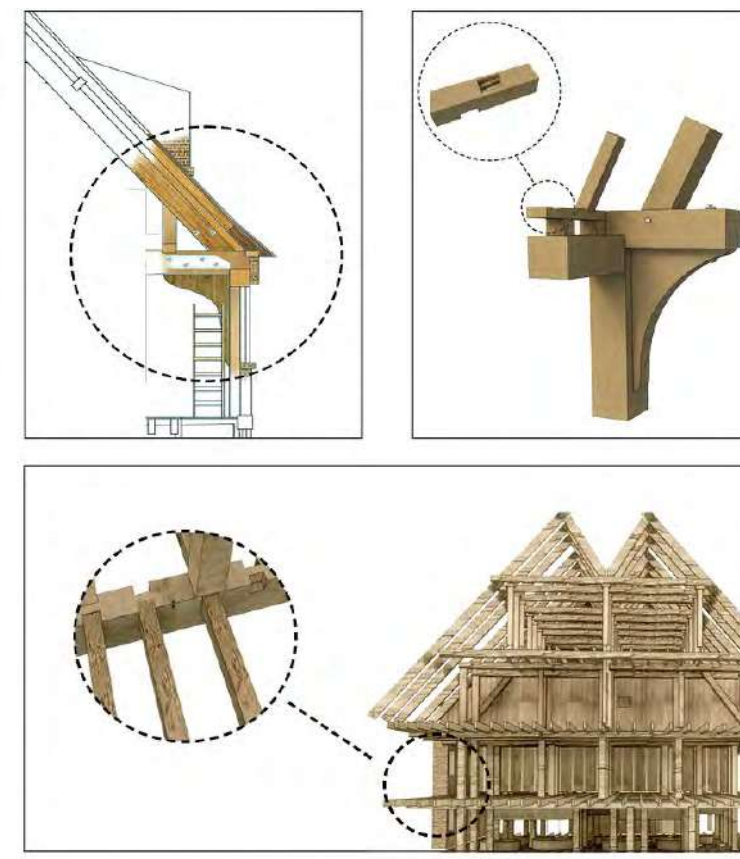
House Mill is located in East London, a historic heritage building. The building was originally a mill and the site was on a tidal river, so the watermill of the building itself was a good design point. I created a fabric recycling plant and worked with surrounding businesses to drive economic benefits to the community. This is a technology that popularized the textile industry. At the same time, it can provide a good leisure environment for residents and students. Attempts were made to enhance the value of using tides and existing timber buildings



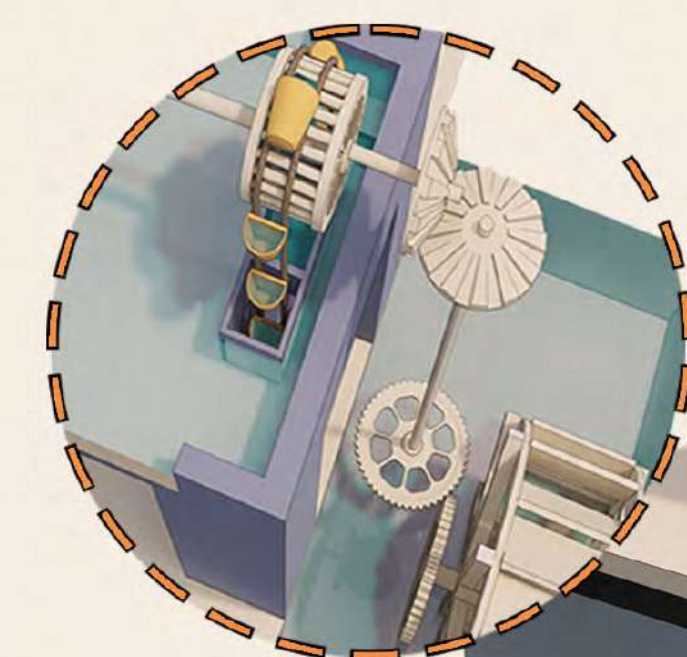


- Metro Station
- 500 Meter Range
- Heritage Area
- Residential Areas
- Commercial
- School
- Green Space
- Industrial Zone
- Mosque
- Commercial

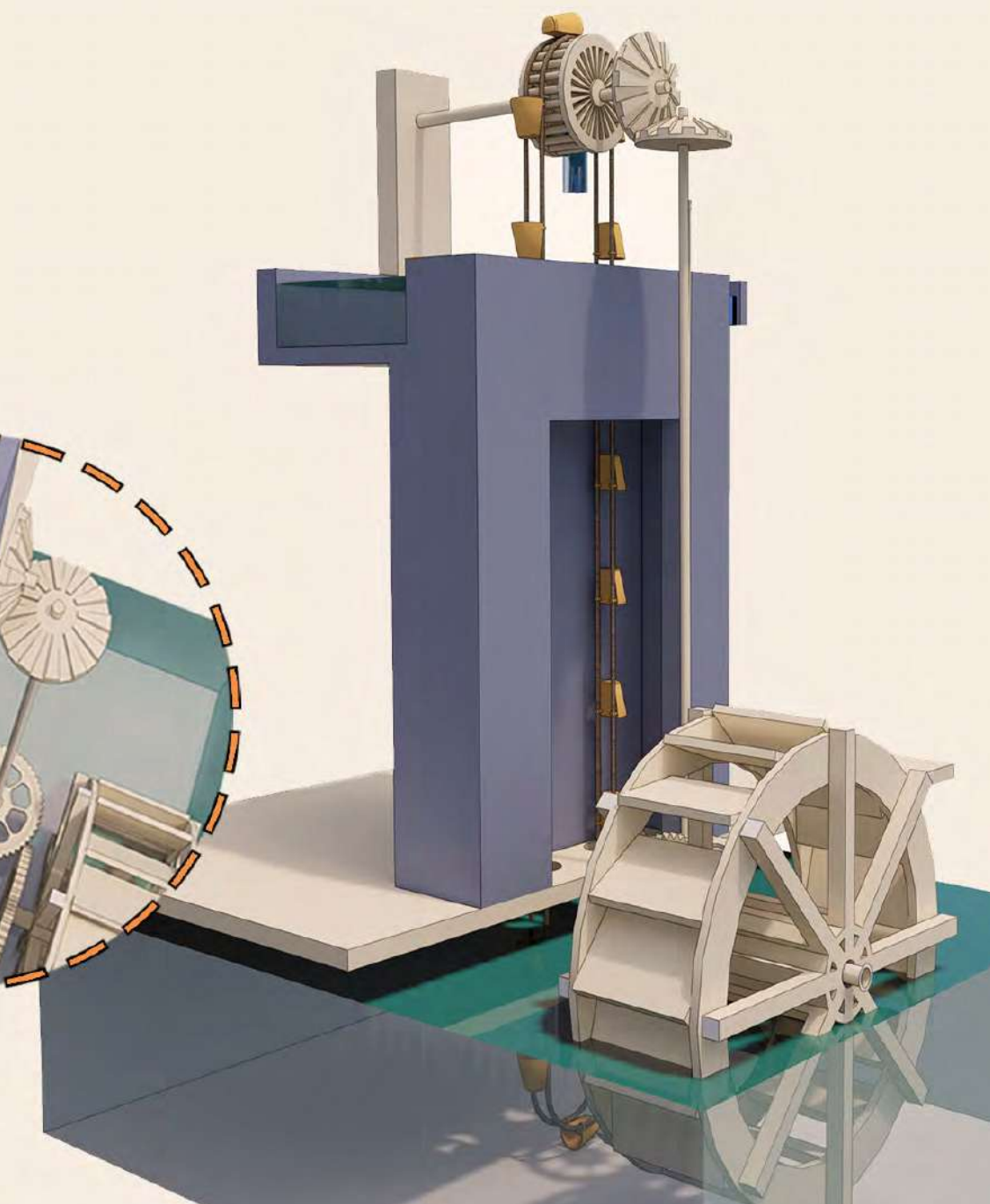
The population density is greater than that of commercial areas, and leisure and entertainment facilities and places are scarce

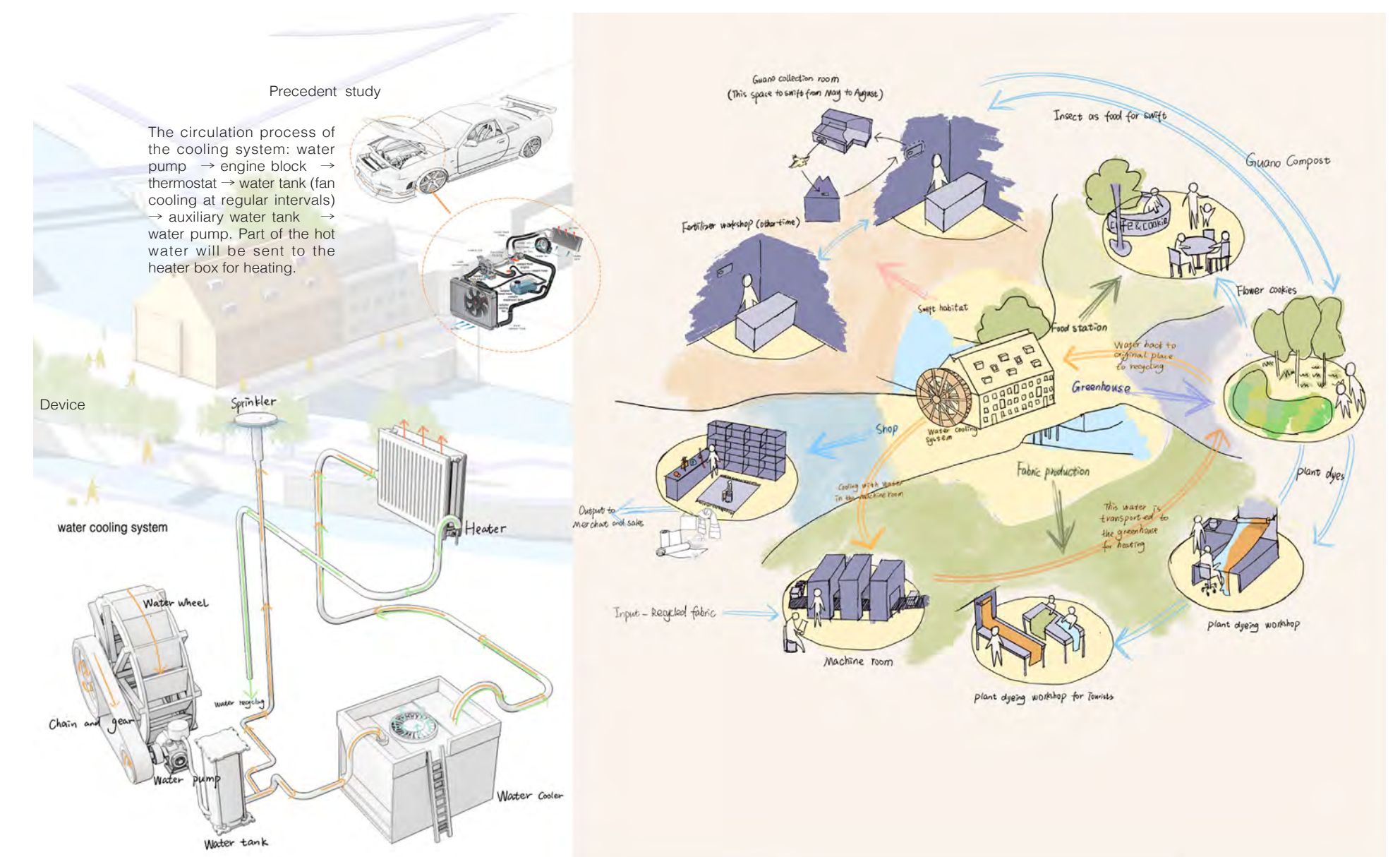
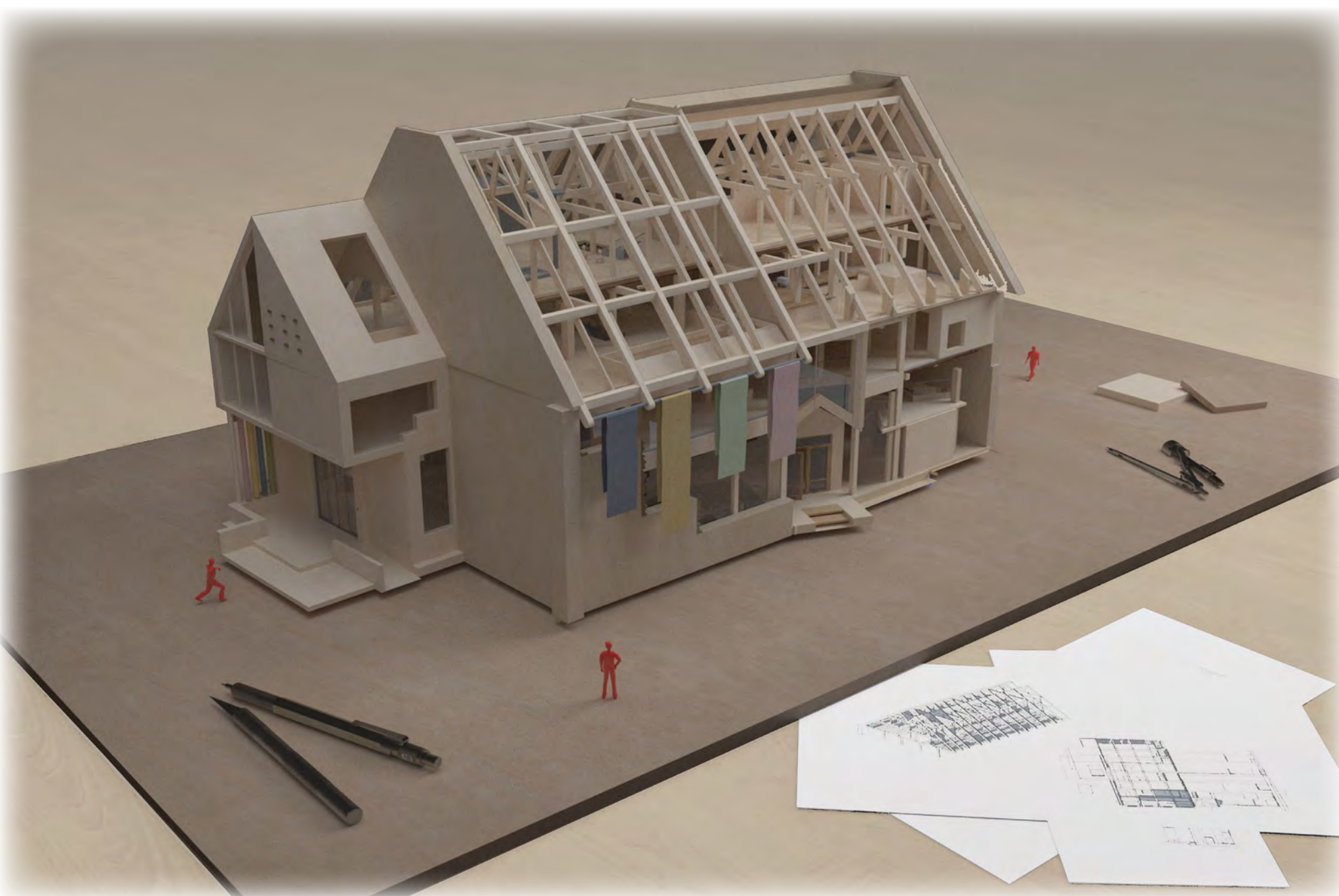
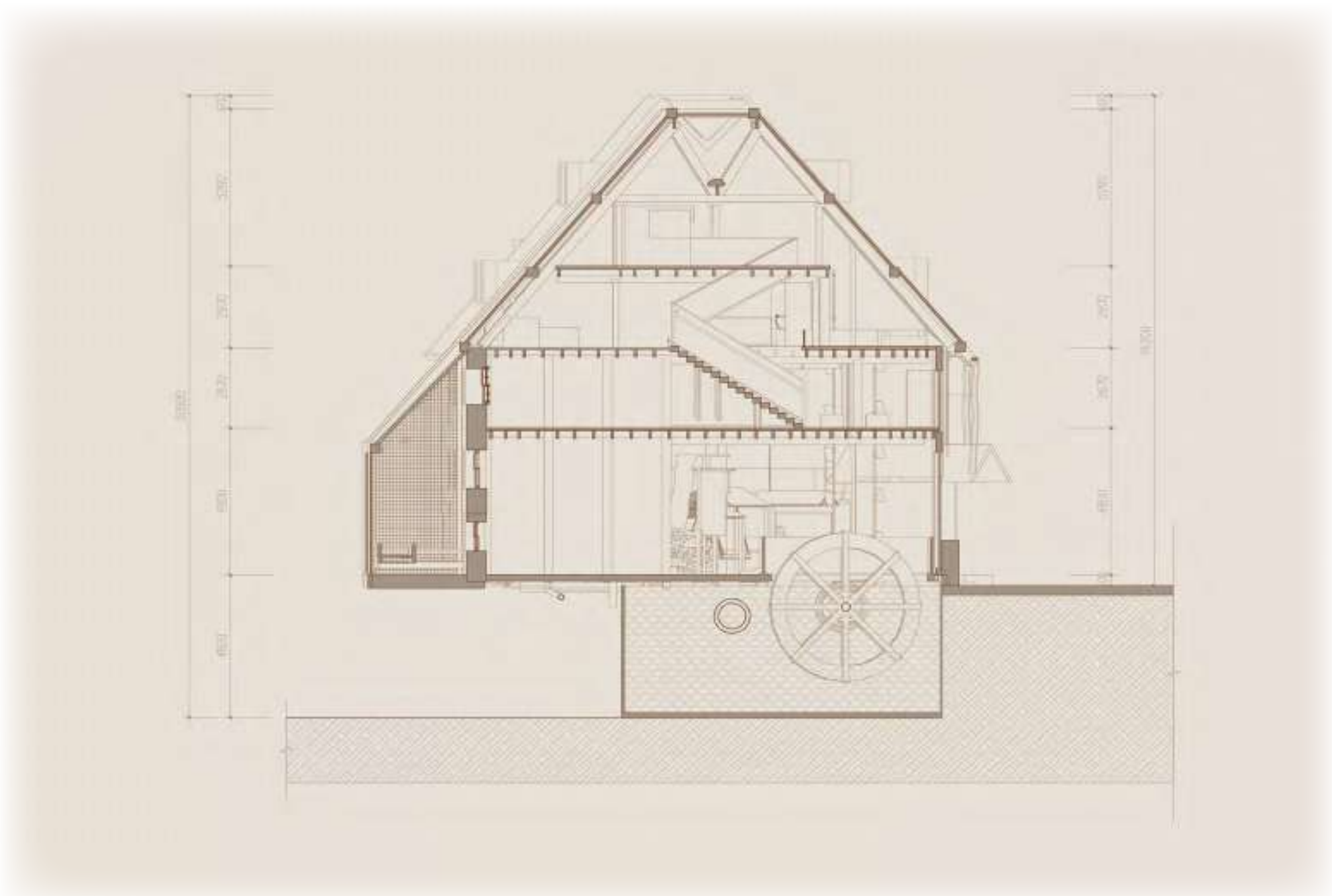
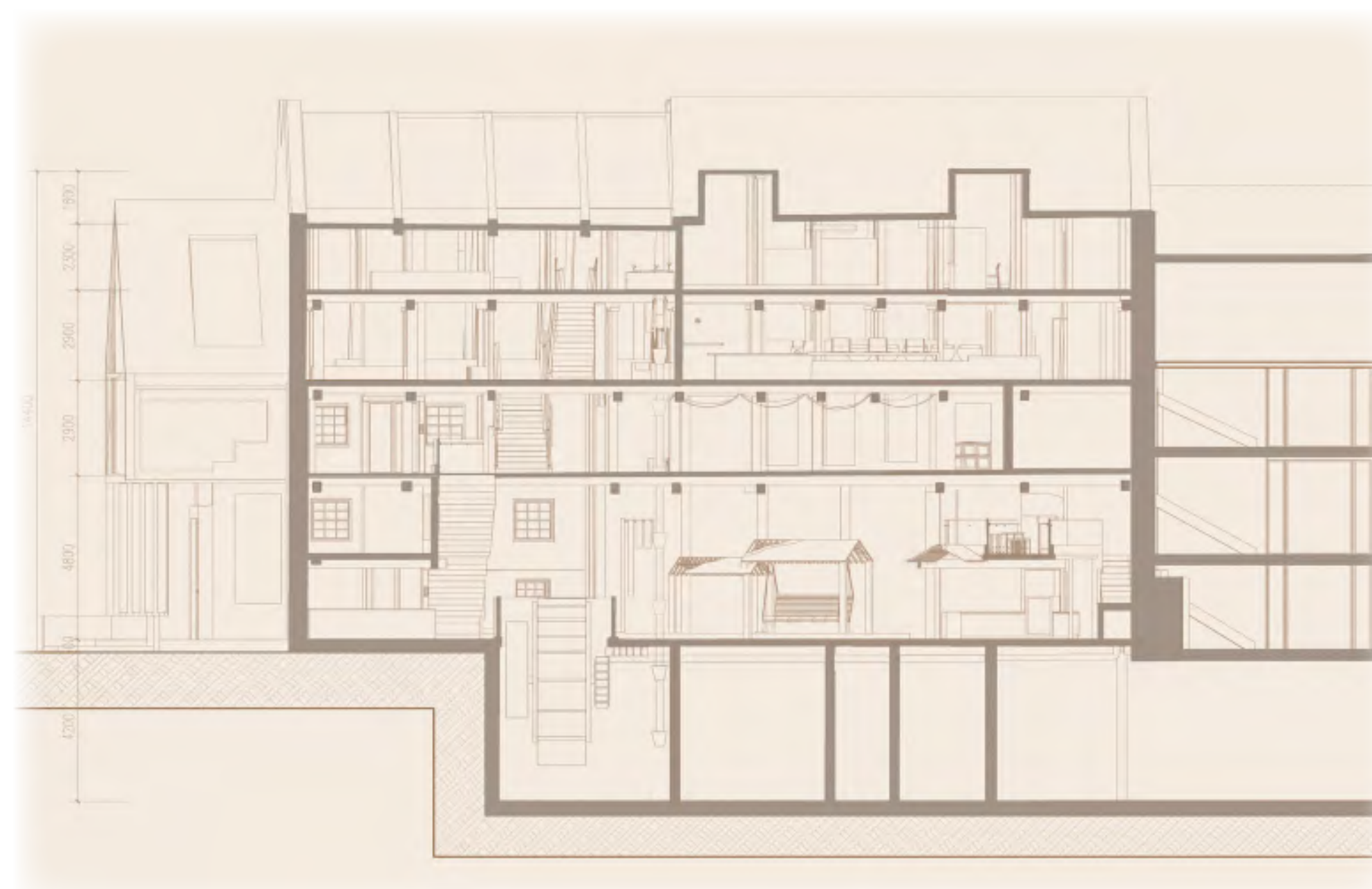
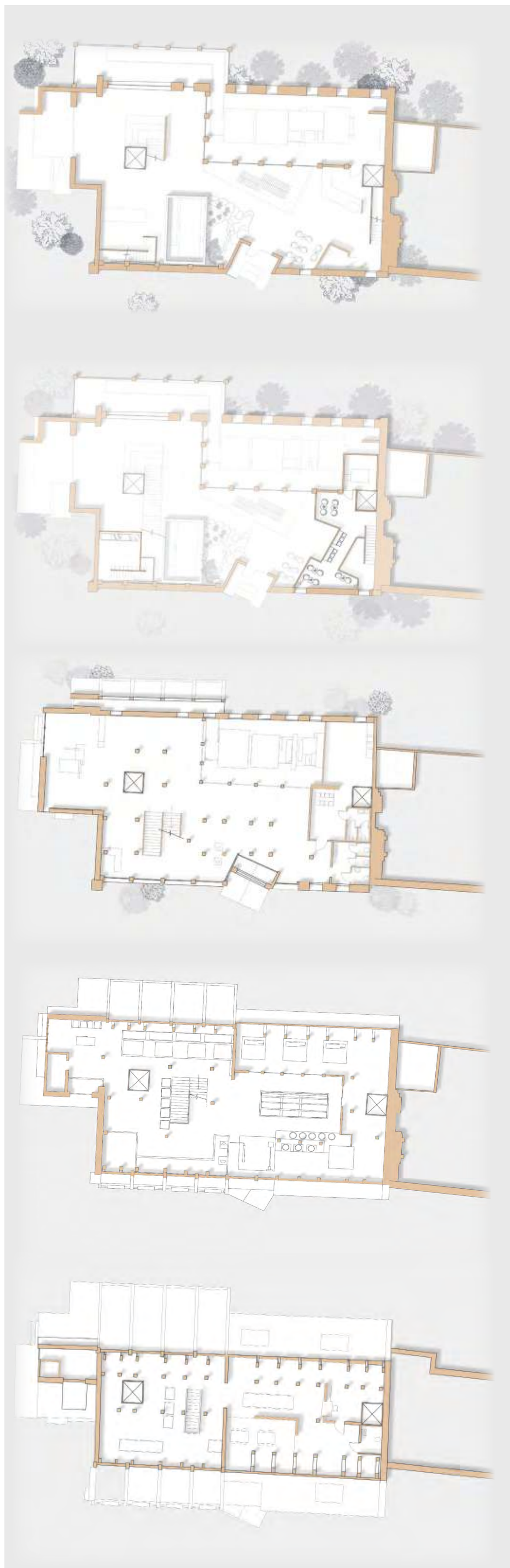


The building is located on a tidal river. I used the tide to drive the water wheel to irrigate the plants. At the same time, I also used the principle of car cooling and water wheel to transport water to cool down the machine area, and the used water can be used to heat up the greenhouse and finally form a cycle. Return the water to its original location.

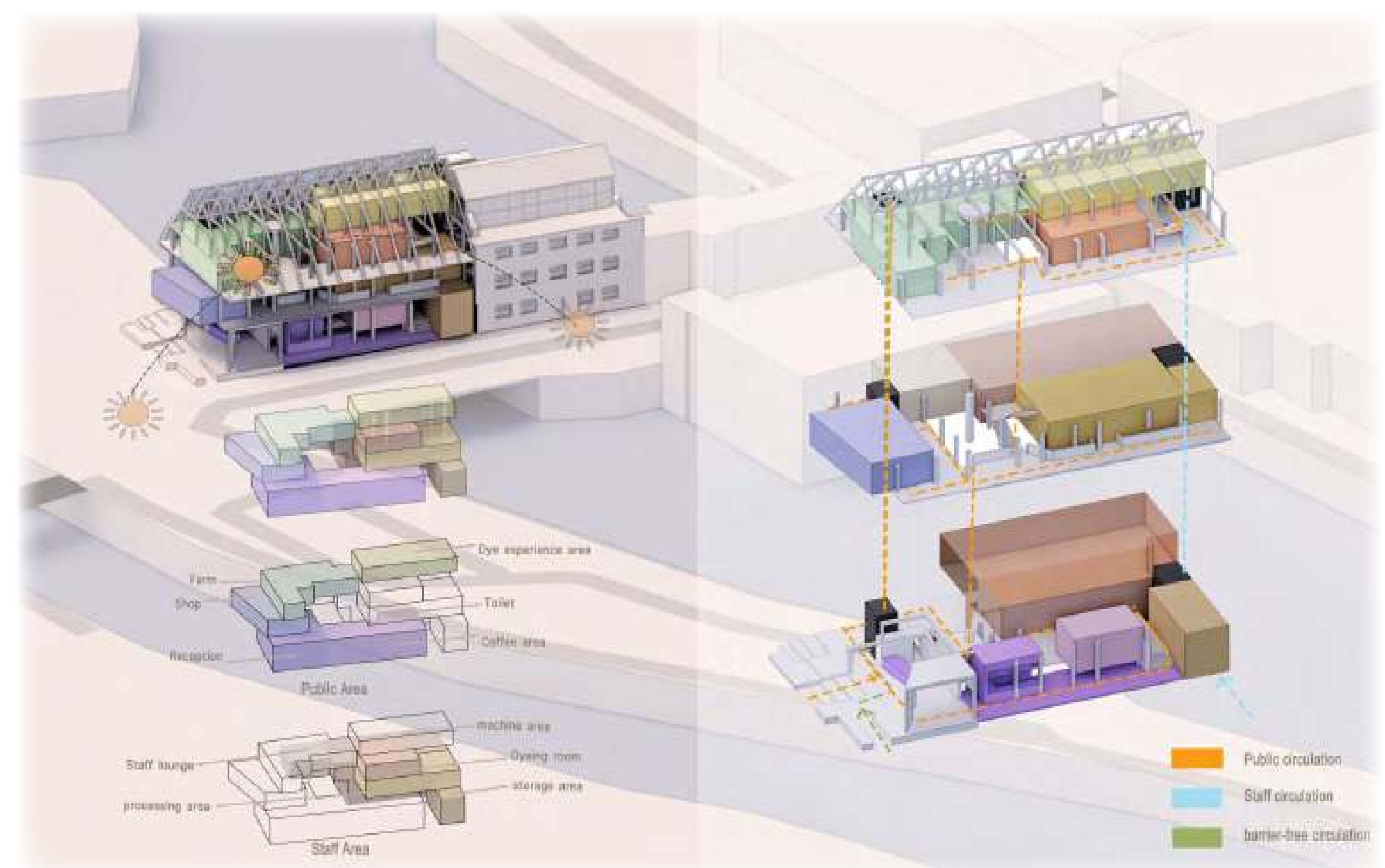


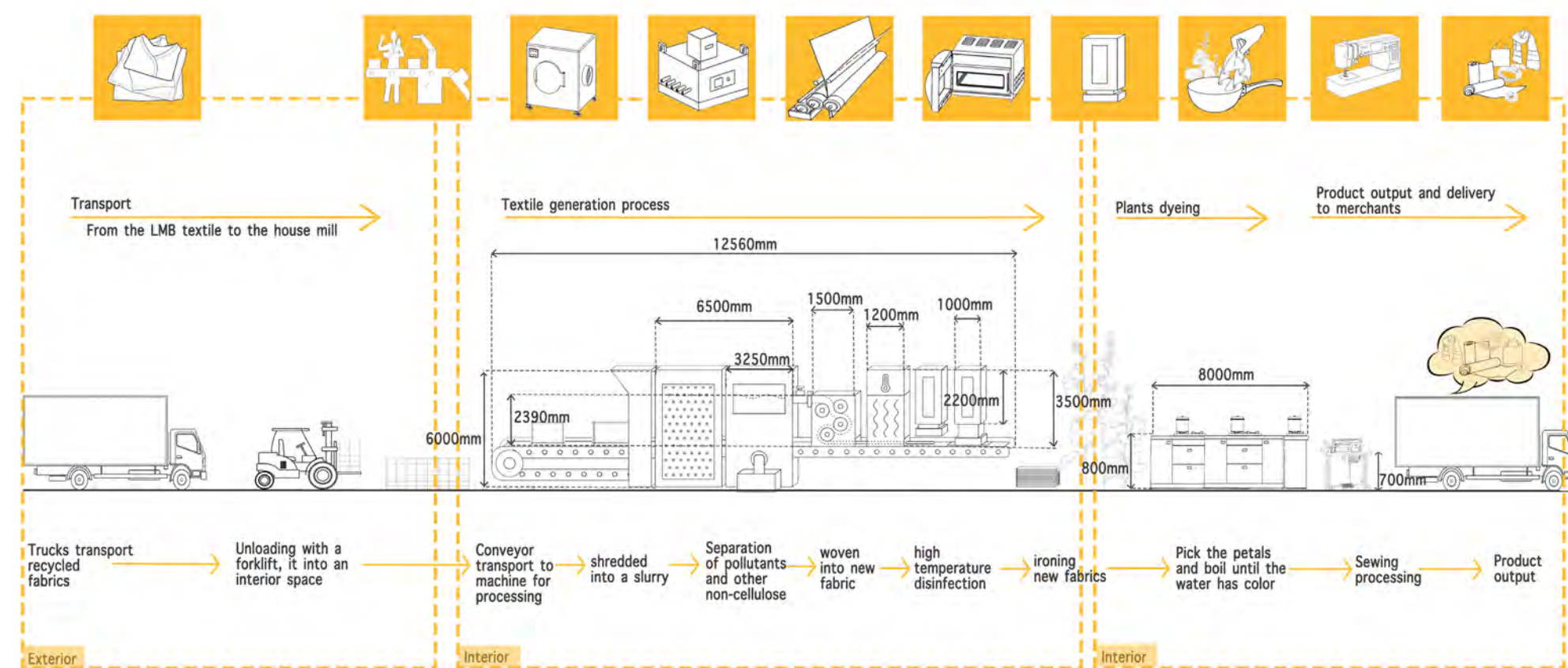
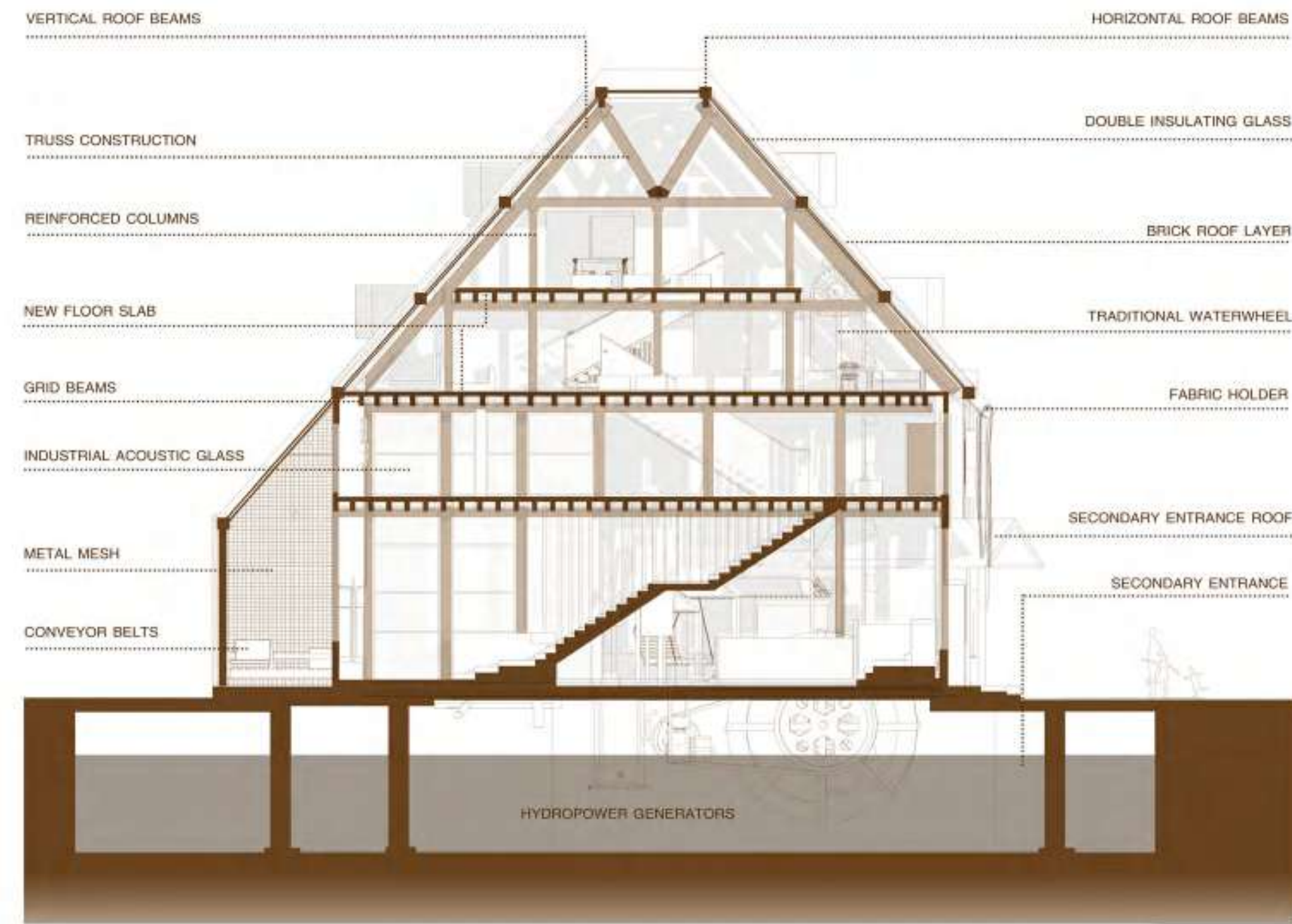
The device is used to irrigate the plants in the greenhouse, and the pool is connected to the pots through pipes for irrigating the plants, saving the cost of manual watering

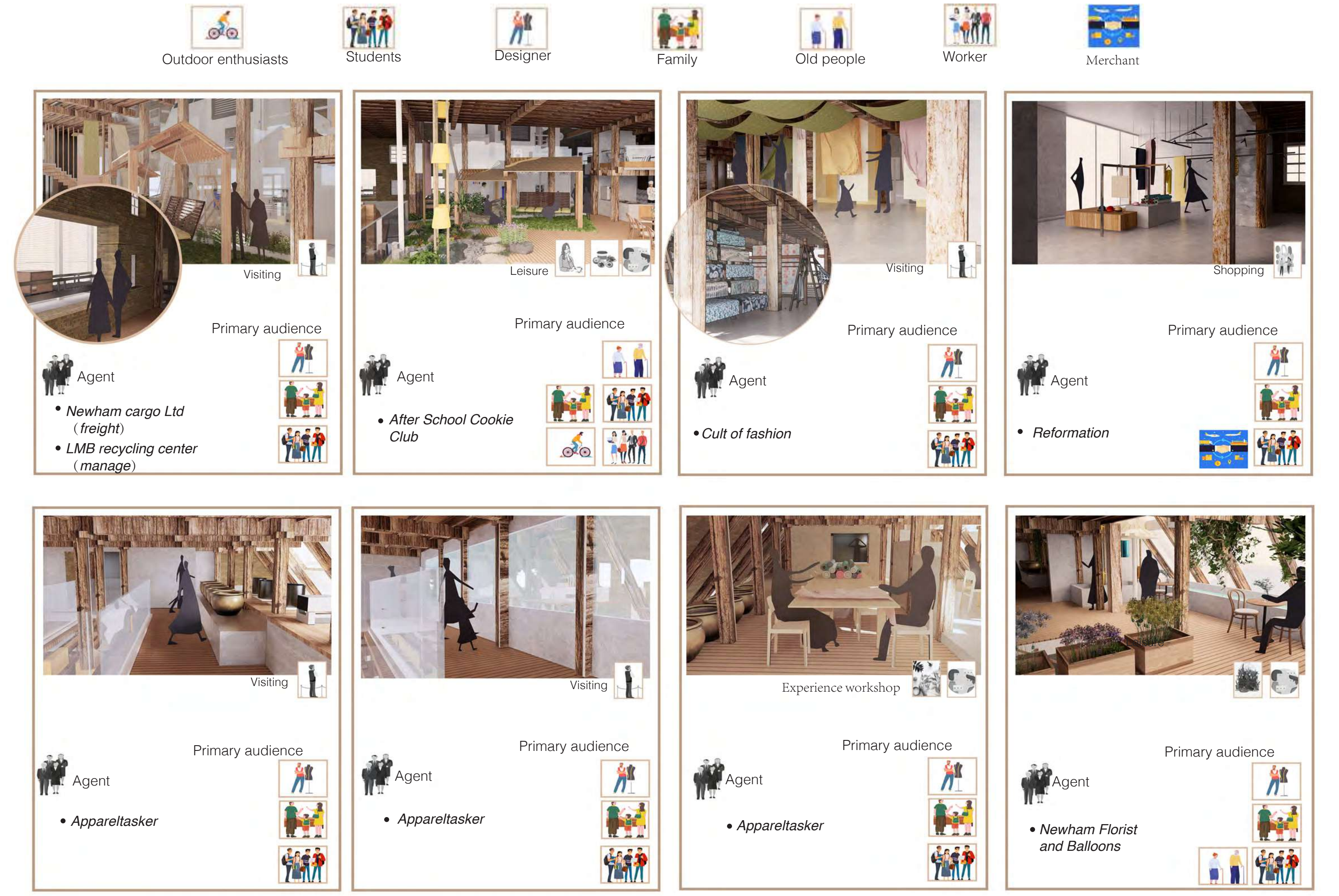
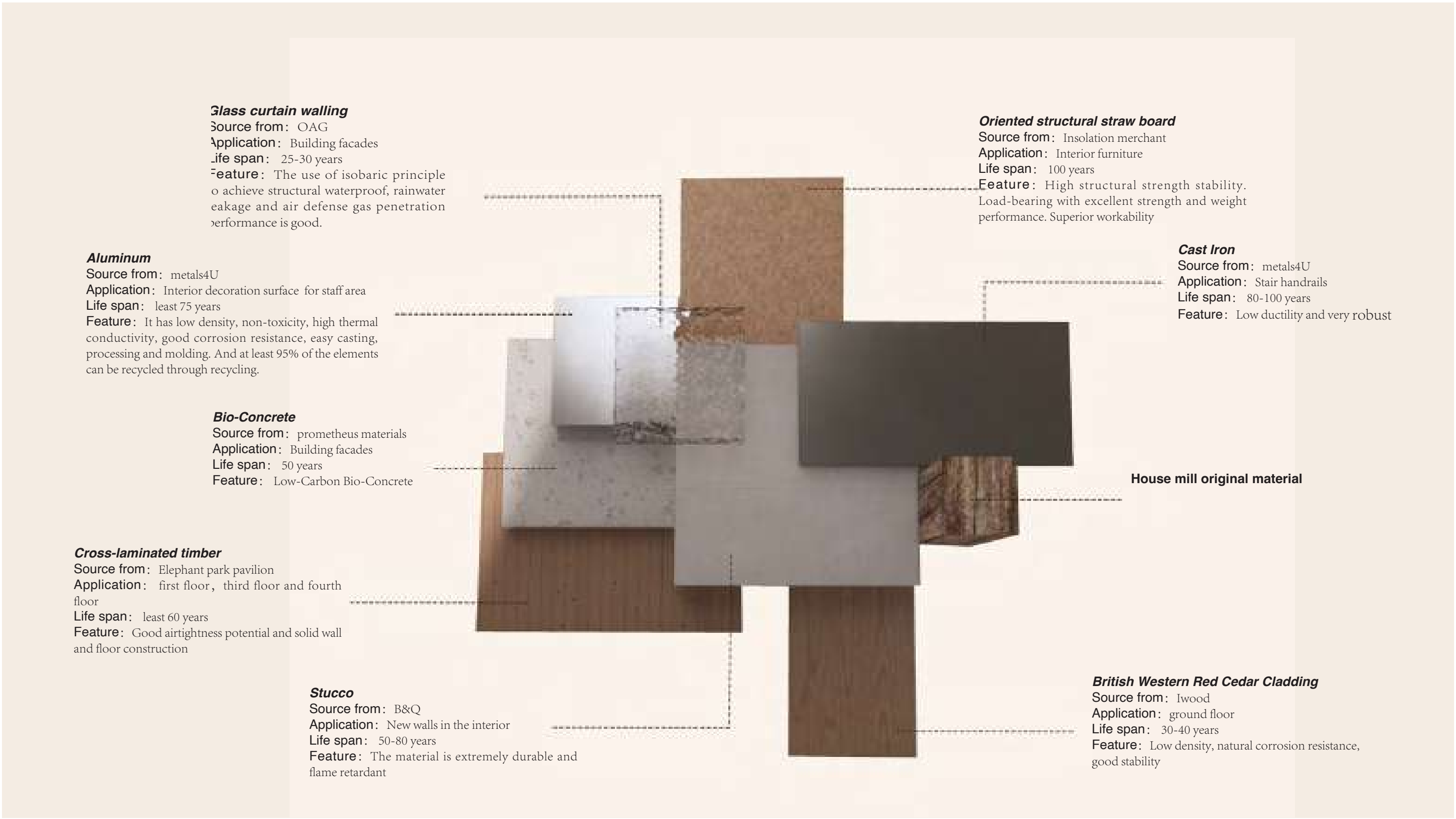
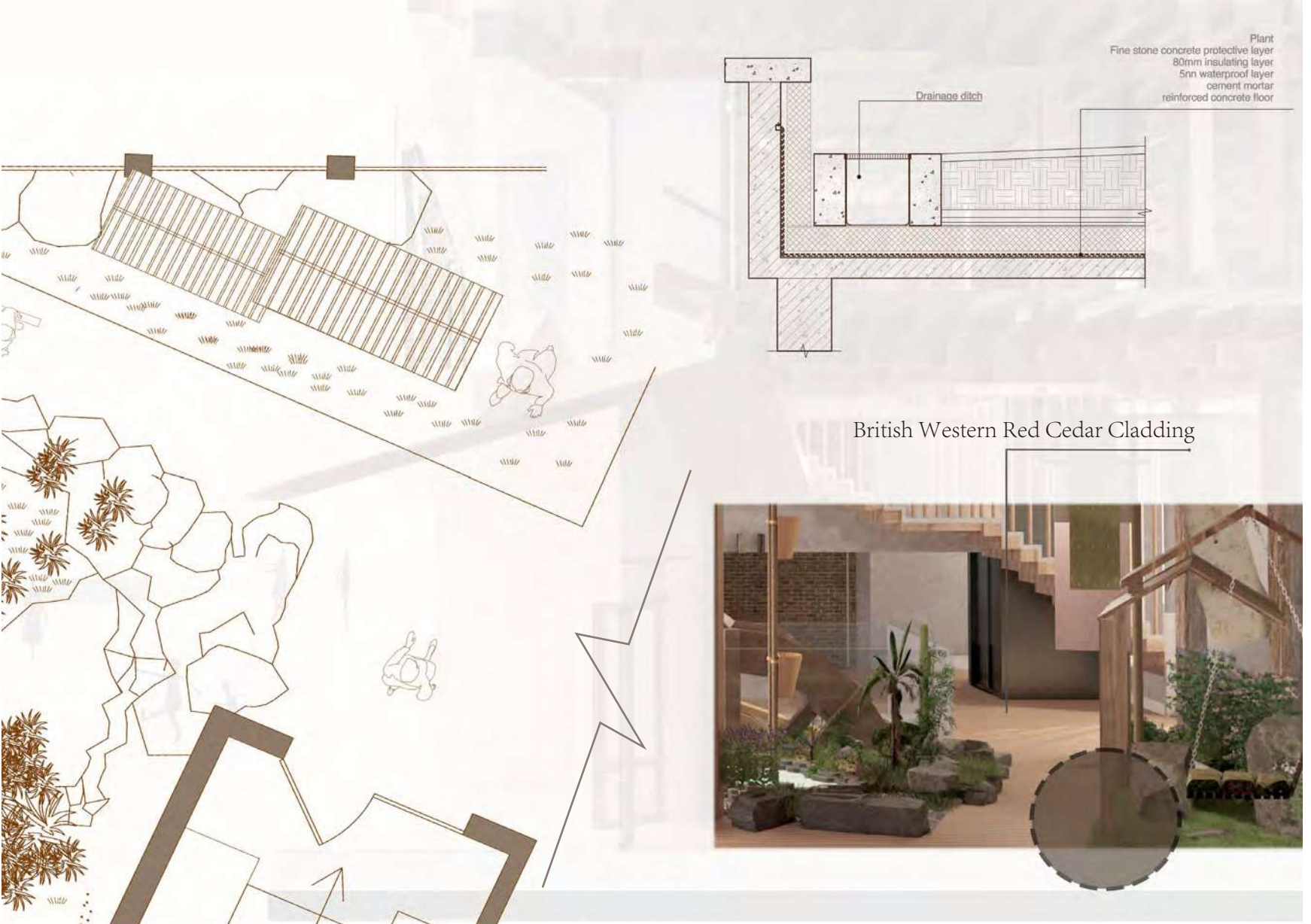
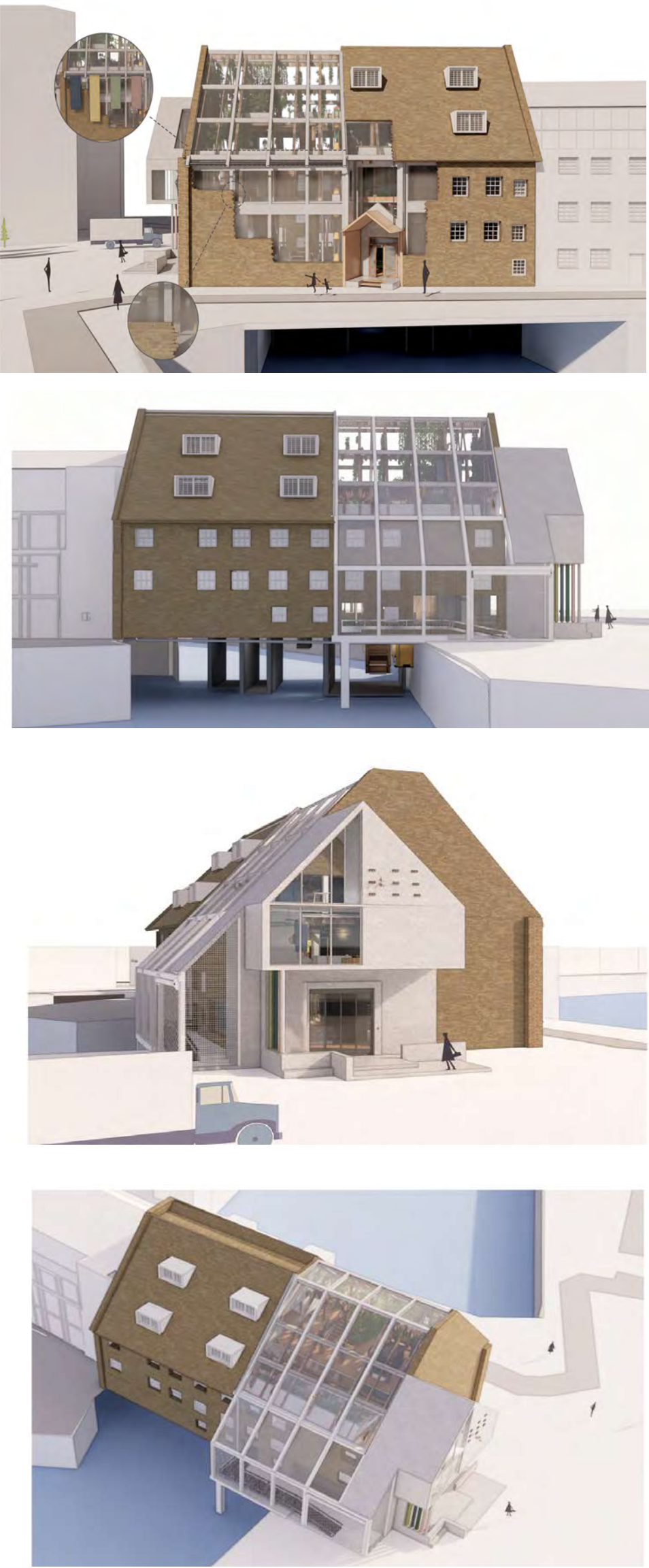




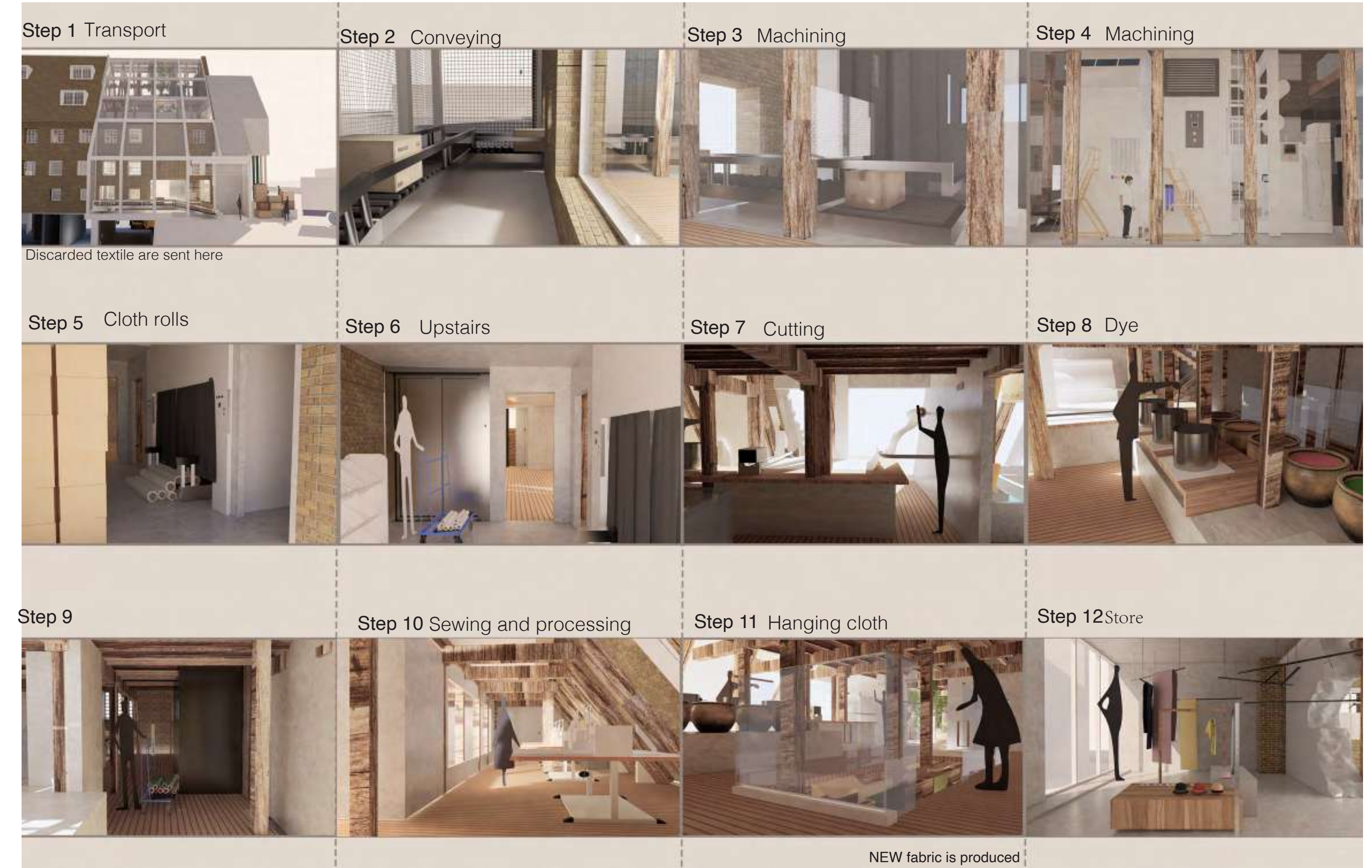
The building is transformed into a fabric factory that can interact with people. The building can provide leisure space for people around, and the fabric visiting route and plant dyeing experience inside the space have educational significance to a certain extent for local students. Cooperate with the surrounding fabric recycling factory to reuse the waste fabrics and reduce the environmental pollution caused by the waste fabrics.







Analysis of agents and customers



Fabric journey and working space