

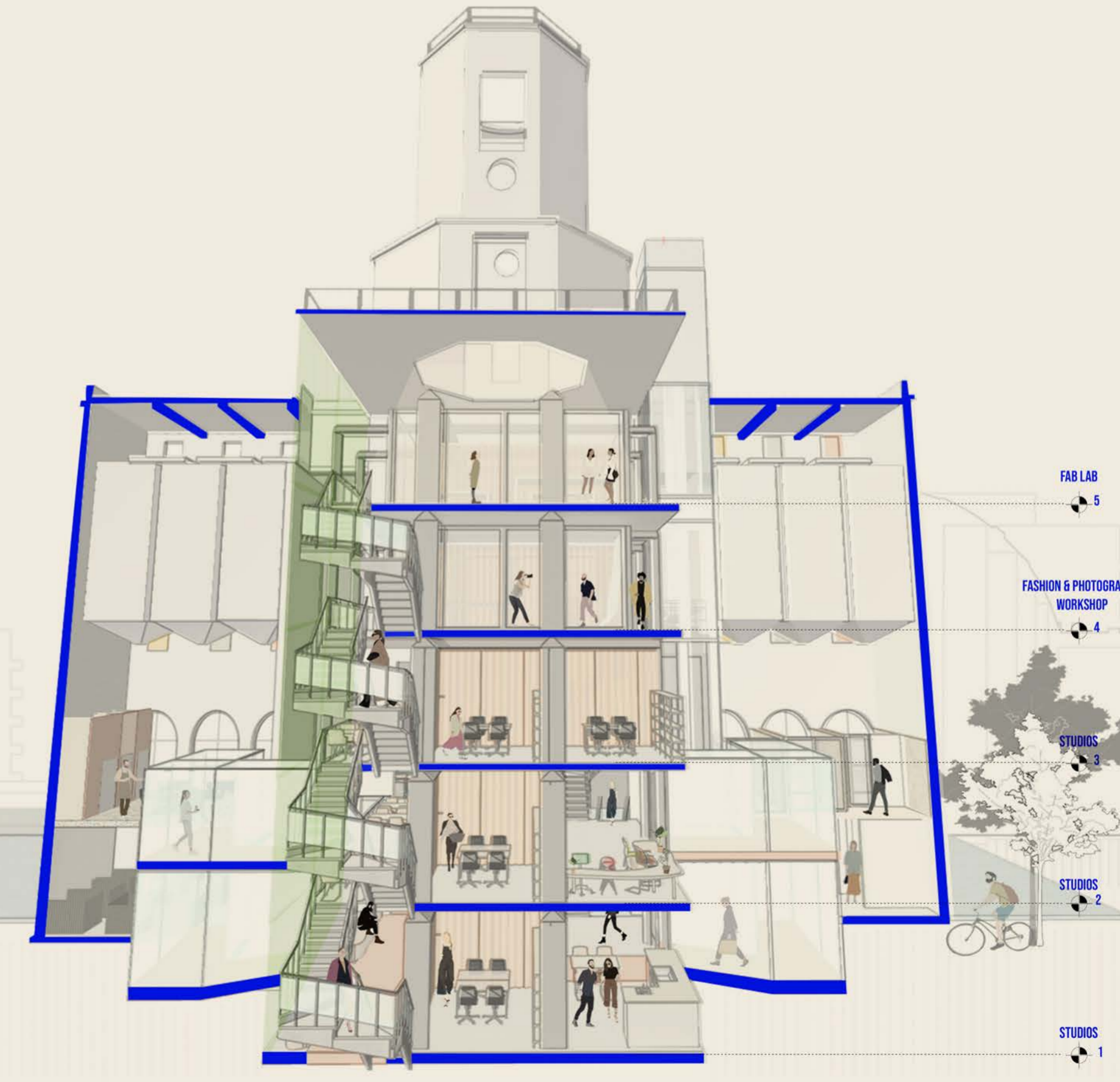
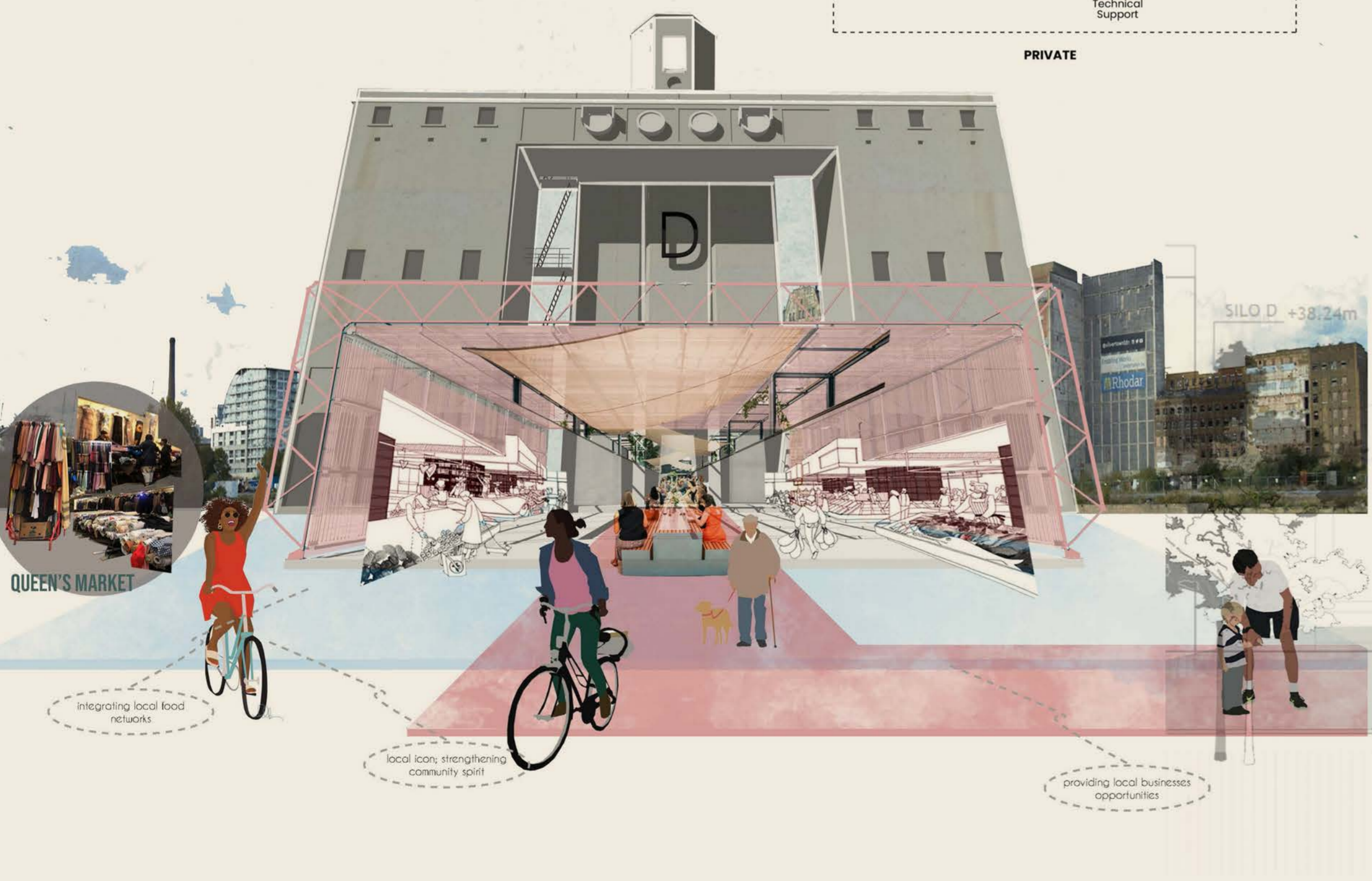
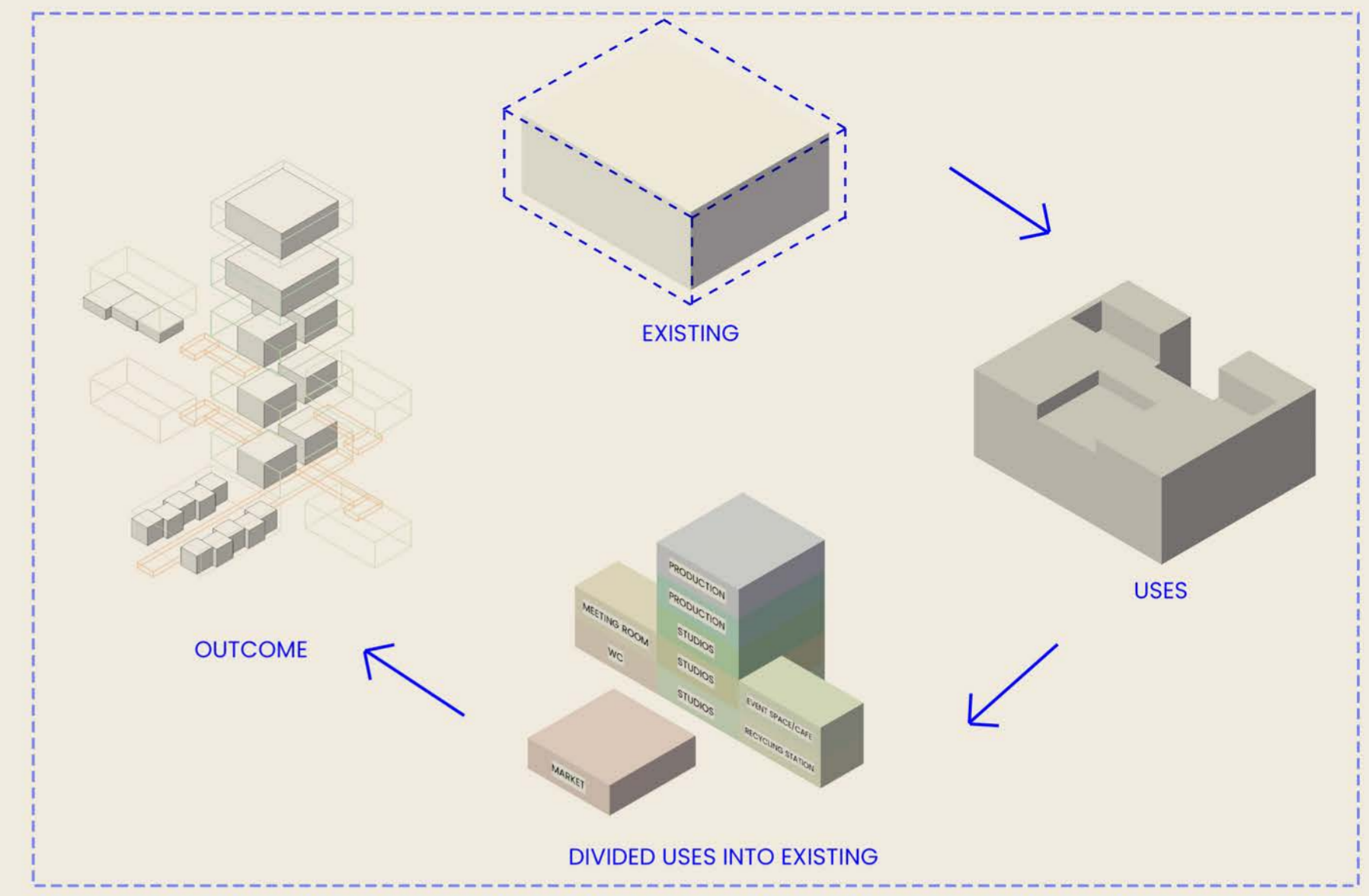
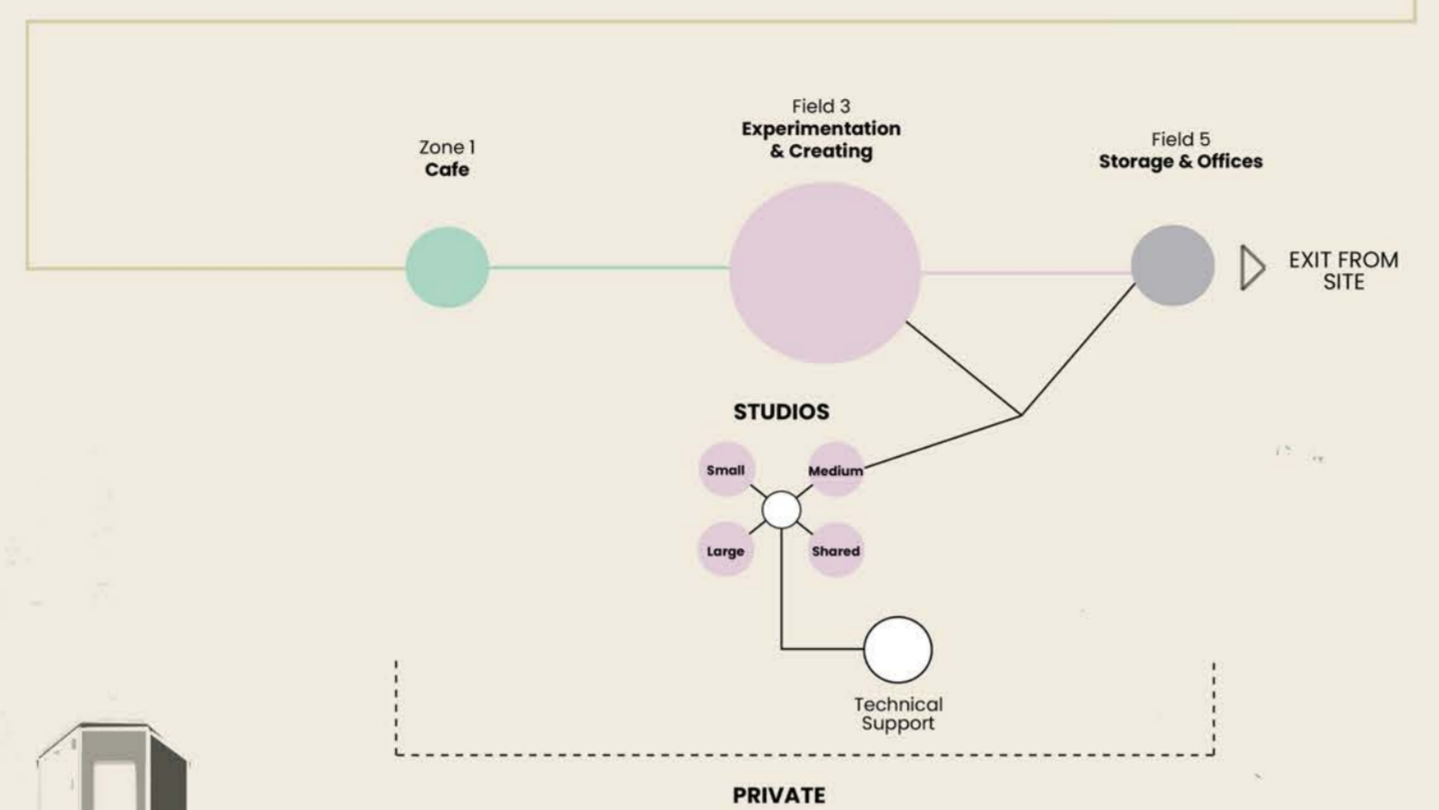
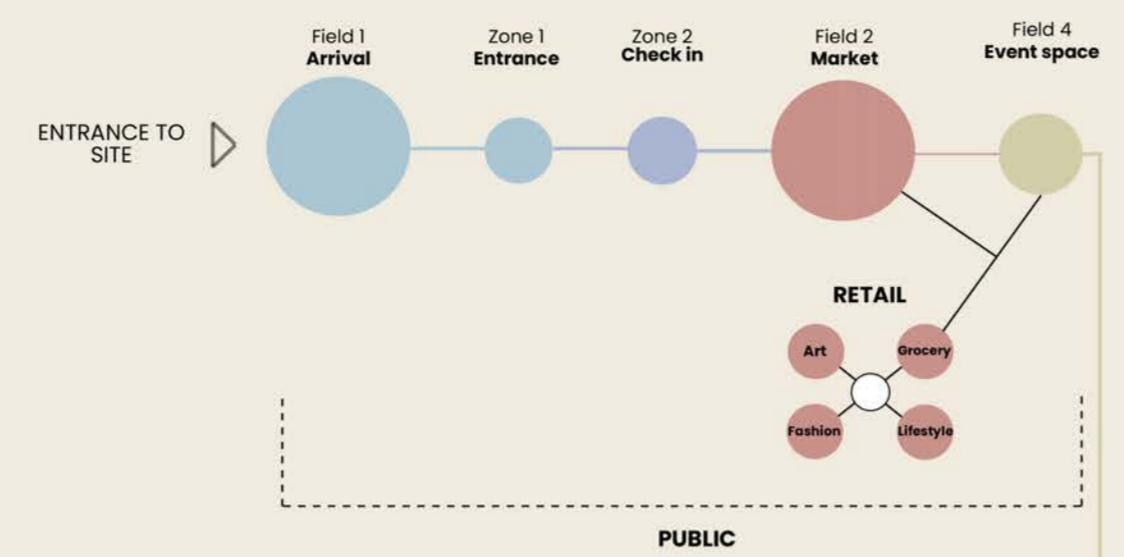
# THE LINK: "a relationship between two things especially, when one affects the other."

'The link' is a delivery of an affordable workspace for creative and design businesses and start-ups. It is an exciting opportunity to raise the bar of local workspace provision to meet the creativity and entrepreneurship of young people across Newham. The market constitutes the type of richness that has the potential to support and enrich a variety of cultures and communities. The building is circular within its uses. It is unique because you get to see how these different uses come together.

The scheme proposes an 'inside out' concept which is a holistic approach to integrating the built environment with the natural environment. Interior spaces can be made to suit our human nature and connect with the world outside; capturing views, daylight, solar heat gain in the winter and natural ventilation for cooling.

Furthermore, space is distinctively divided into public and private zones with designated gathering zones around in the form of balconies. The space is well equipped for disabled people as well. The T-shaped ramp starts from the market and ends in the café and office space. The interior circulates you as you go.

Hopkins' abandoned the post-war architecture style Patera building acts as an umbrella to the floating market which makes it a strong and stable structure for the next upcoming years. The market provides locally sourced food which creates more job opportunities along the way. The stalls are designated for different types of retailers in sectors such as art, craft, food, and grocery. The market square also consists of a semi-circular seating area where one could sit and enjoy the view of the Pontoon Dock. This T intersection of the retail, commercial and community will benefit the upcoming future of Silvertown.



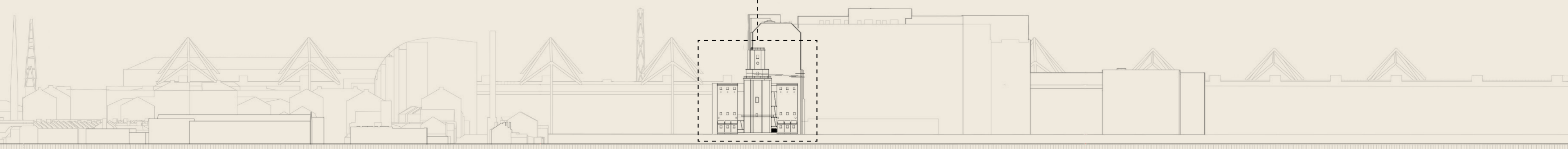
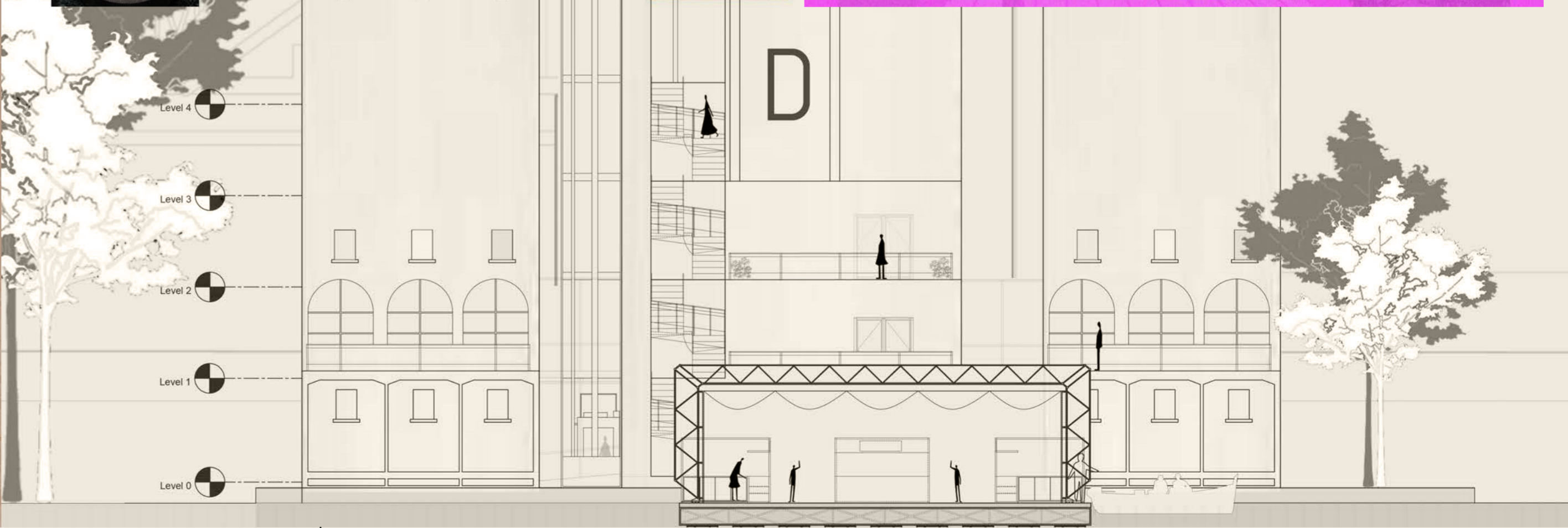
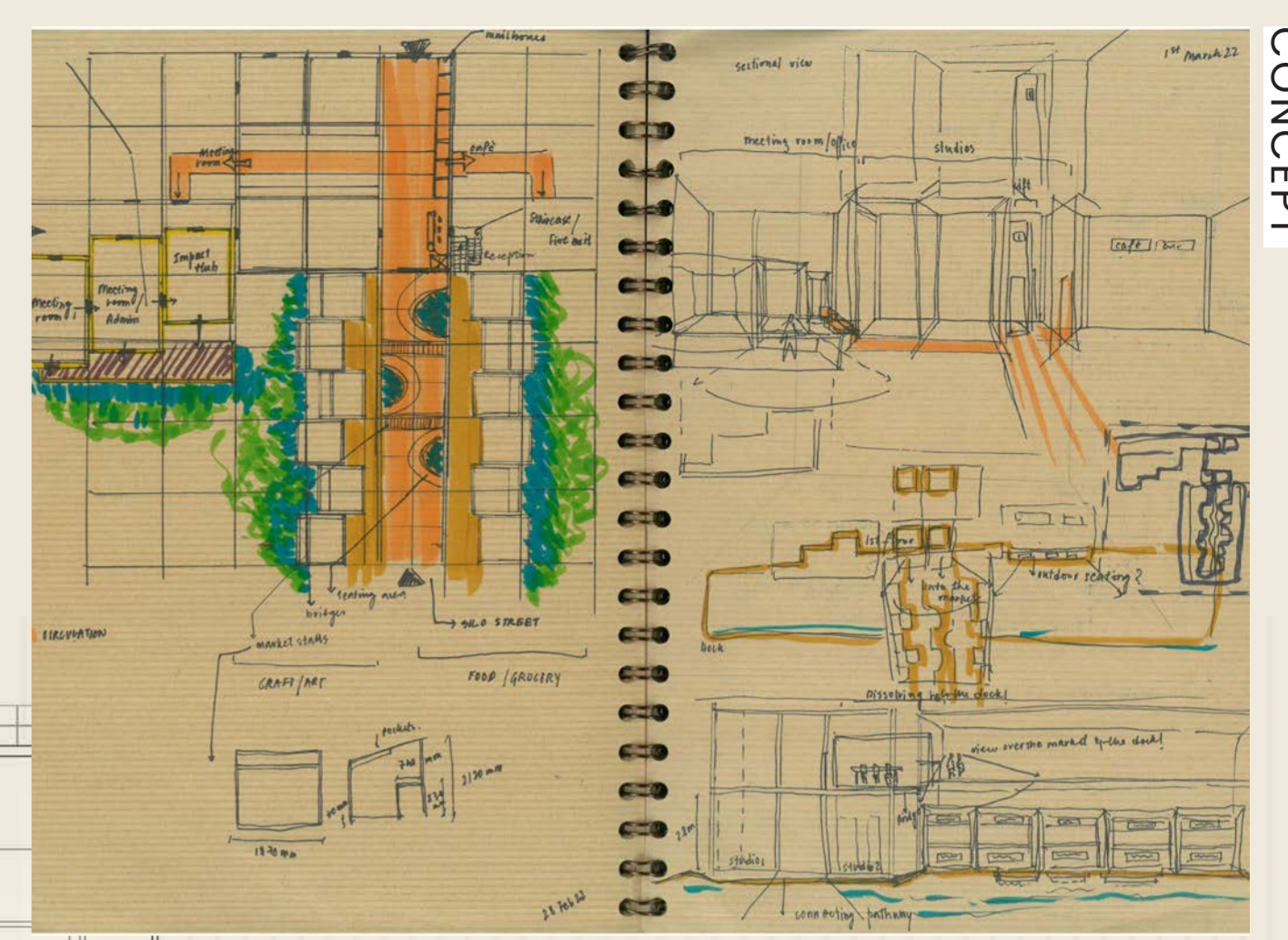
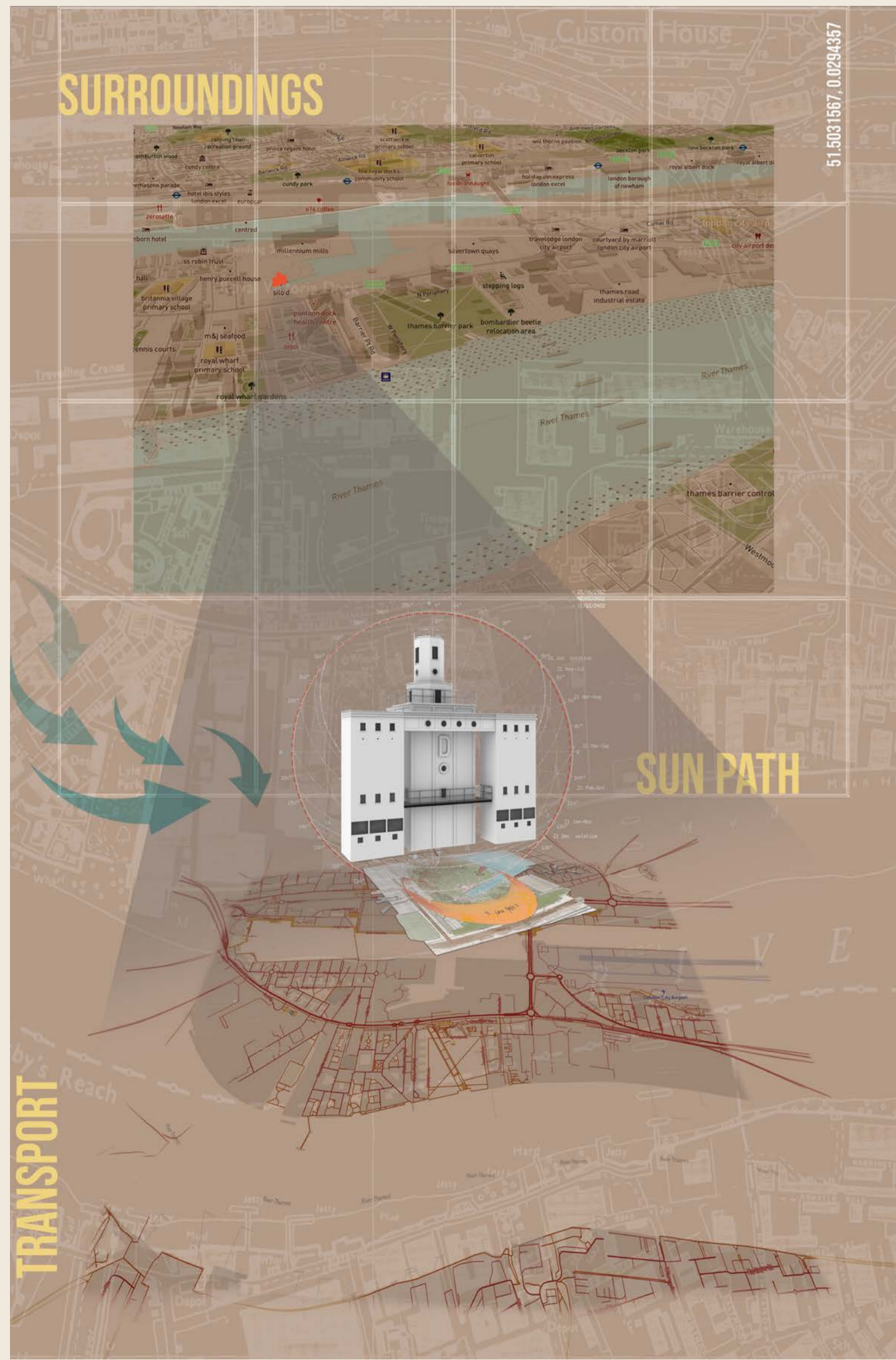
IDEATION

-->

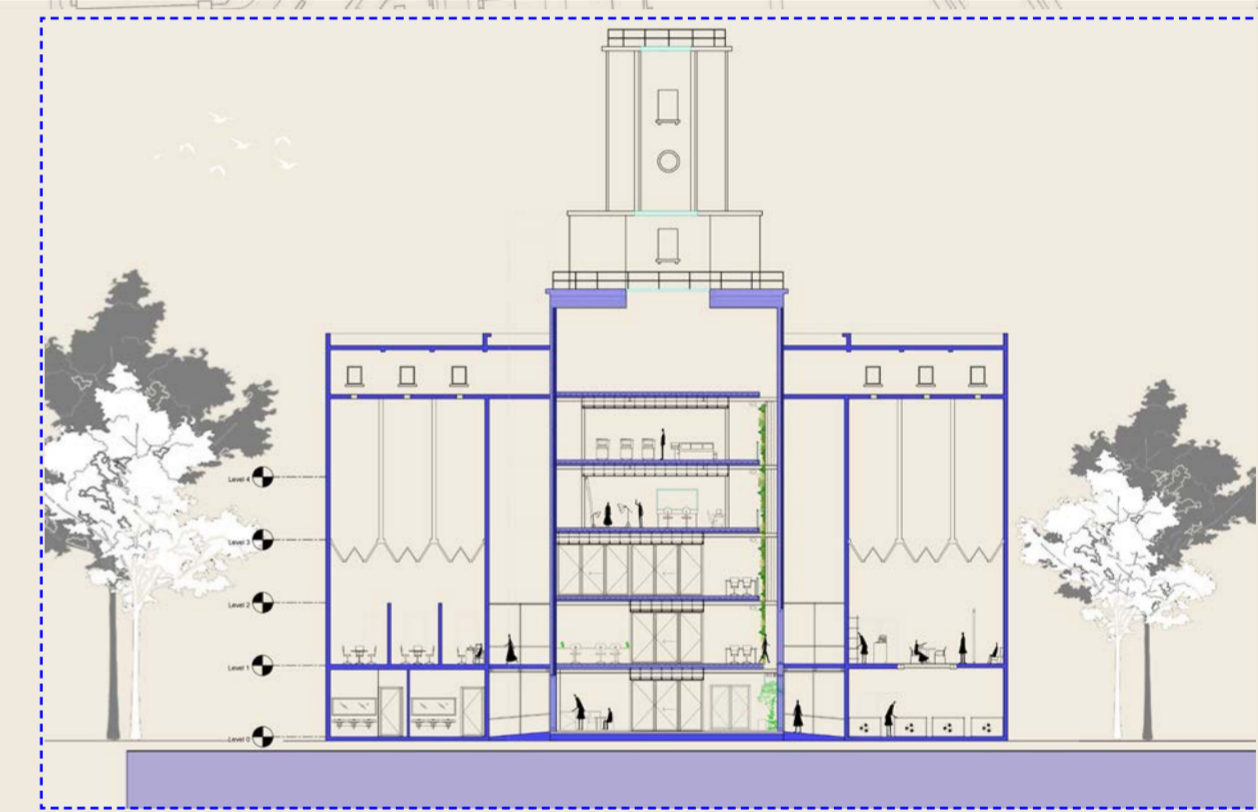
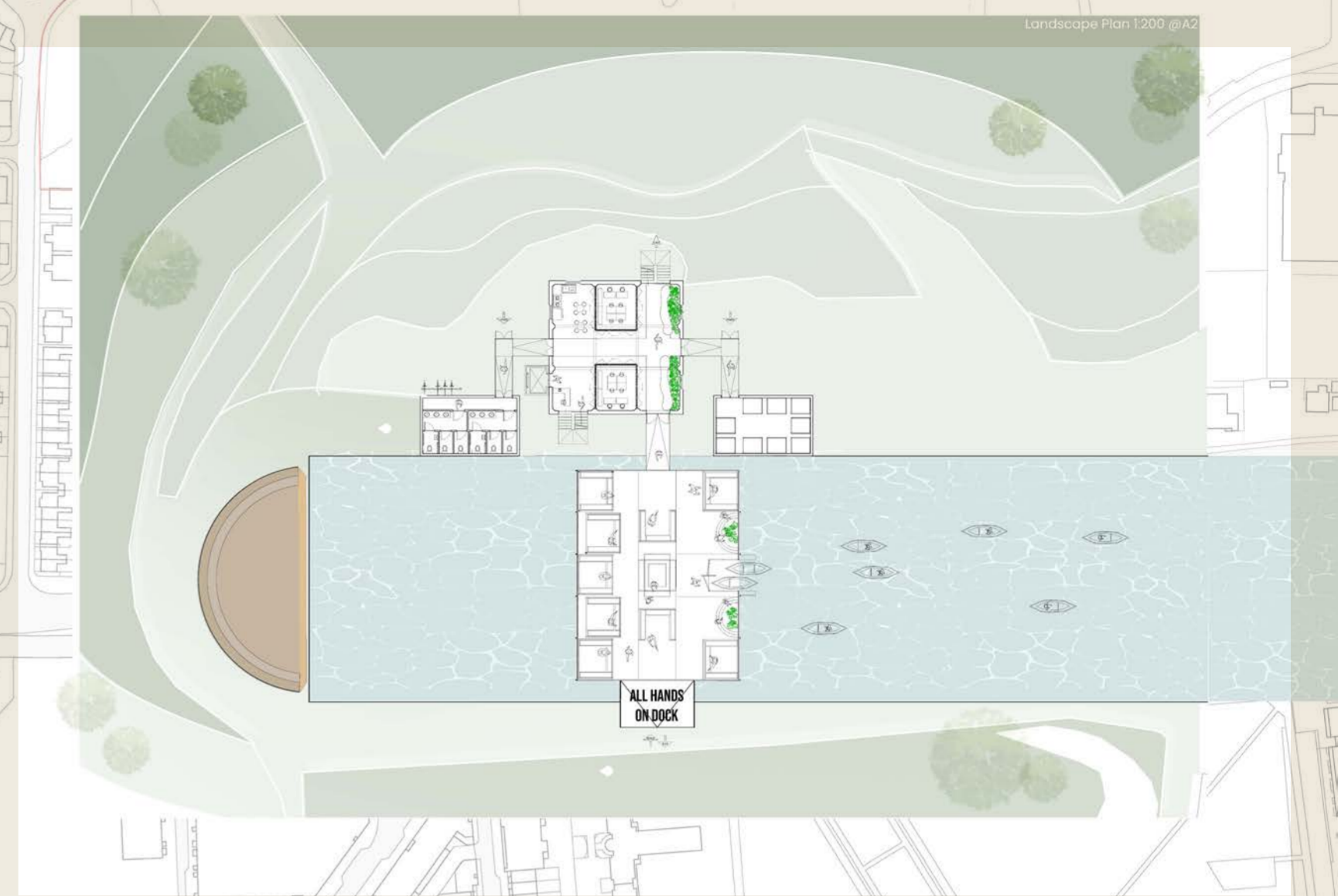
APPLICATION

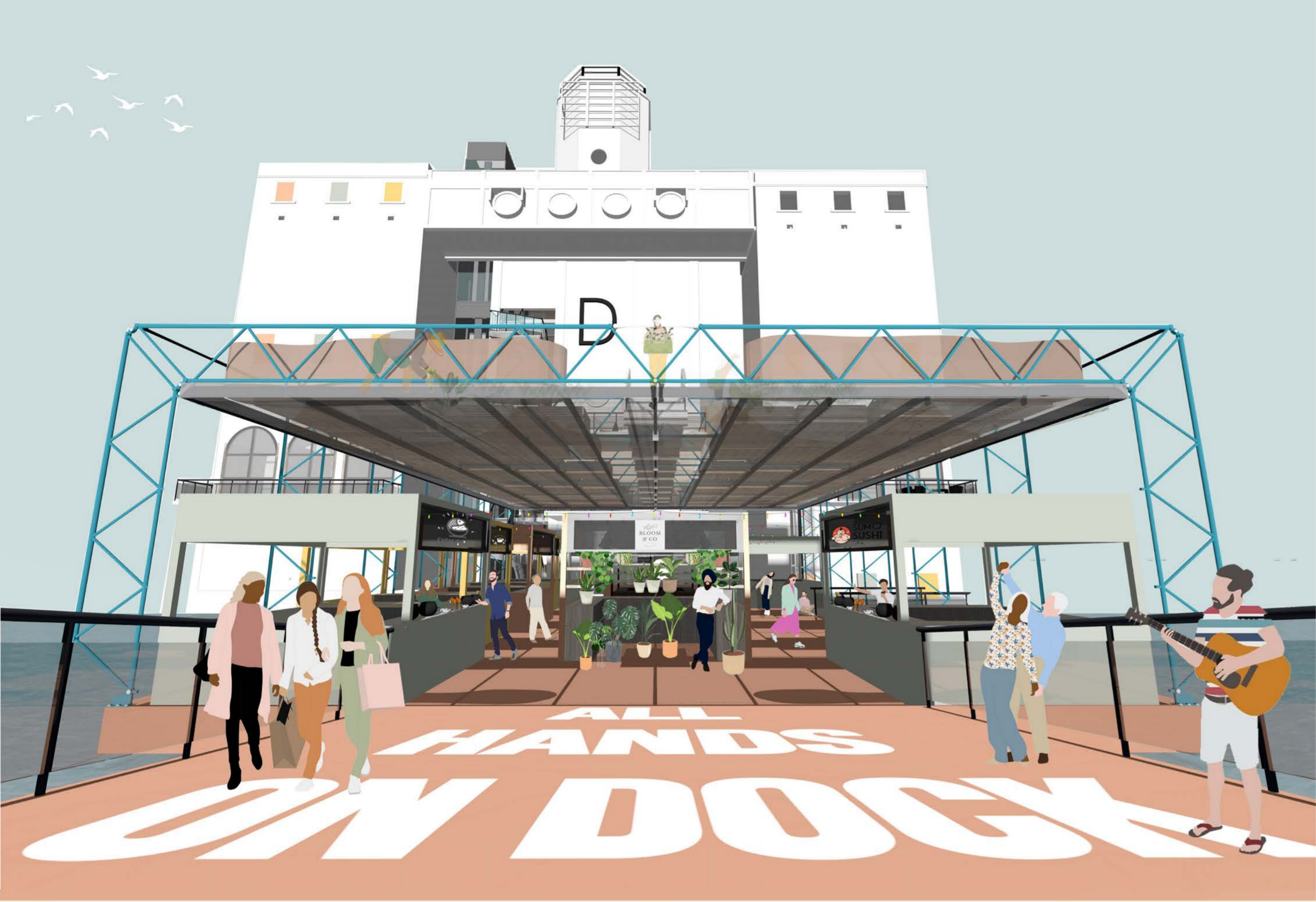
# SITE ANALYSIS : SILO D

Is a Grain silo. It is made of reinforced concrete. It is a simple plan of set back, central head house, with square compartments housing silos to either side and rear linked at high level, and with a horizontal Chase style elevator on top, and leg to one side. Windows are now blocked overlooking finger dock, with roundels on high level link. Bulk grain was lifted from ships and barges into the central cube of silos and the two side towers, both by traditional bucket conveyor and by suction elevator, and thence loaded on to other barges. This was the centre of grain importation into London, and replaced iron silos of 1898 which were damaged in the Silvertown munitions explosion of 1917.



EXCHANGE OF PRODUCTS & SERVICES





# FLOATING MARKET & FARM DETAIL

Designed as modular objects, the new stalls can be orientated and combined to suit different product displays. From over-the-counter to U-shaped configurations, with multiple racks and shelving, they are customisable by each retailer and set up for their individual needs. Market remains afloat by pontoons and is protected by Hopkin's Patena structure.

