

Design statement:

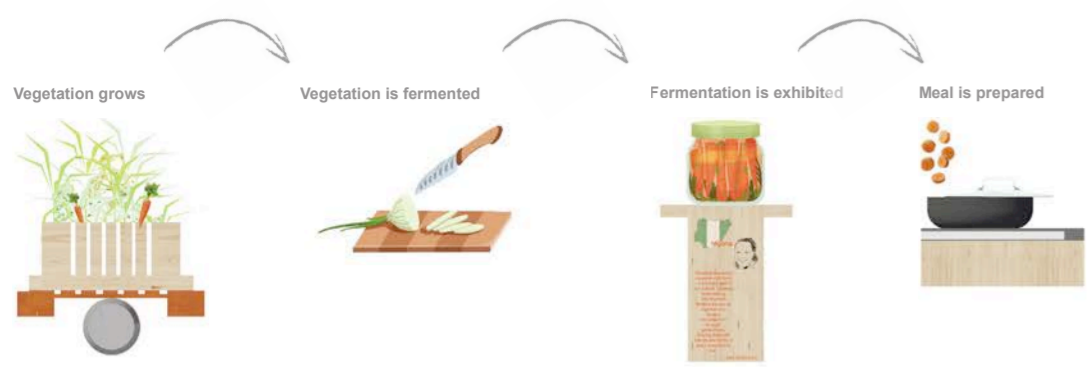
Located in Silvertown, Newham, Pickle Palace pays homage to the sites rich history in exchange, through changing the narrative from grain import and export, to instead promoting contact and cultural exchange with the wider community. In collaboration with the charity Migrateful, my scheme aims to celebrate chefs and their traditional cuisines, through the belief a meal has the capacity to bring us together, tell stories, share, discuss and form connections through placing fermentation at the forefront as a symbol of cultural awareness and education.

In reaction to the public's anger at the Newham City Farm's permanent closure, along with the high demand in community allotments, my scheme offers floating gardens inspired by the traditional Mesoamerican agricultural technique; Chinampa. The allotments enable a clear connection between nature and architecture whilst practically supplying vegetation for the fermentation facilities. The allotments provide a community space and safe haven for those suffering with loneliness and mental health, through being encouraged to gather, maintain and build the structures. Furthermore the inclusion of underwater seaweed harvesting and biomimicry design creates an engaging and evocative backdrop within the multifunctional event space.

The scheme responds to the UK's serious flooding problem, through harvesting and purifying rain water. The design exemplifies self sufficiency through expressing the problem in an engaging and lyrical way.

The majority of my scheme offers re-purposed materiality, both lightweight and durable, creatively re-defining the use of a surface to tell a story and promote sustainability.

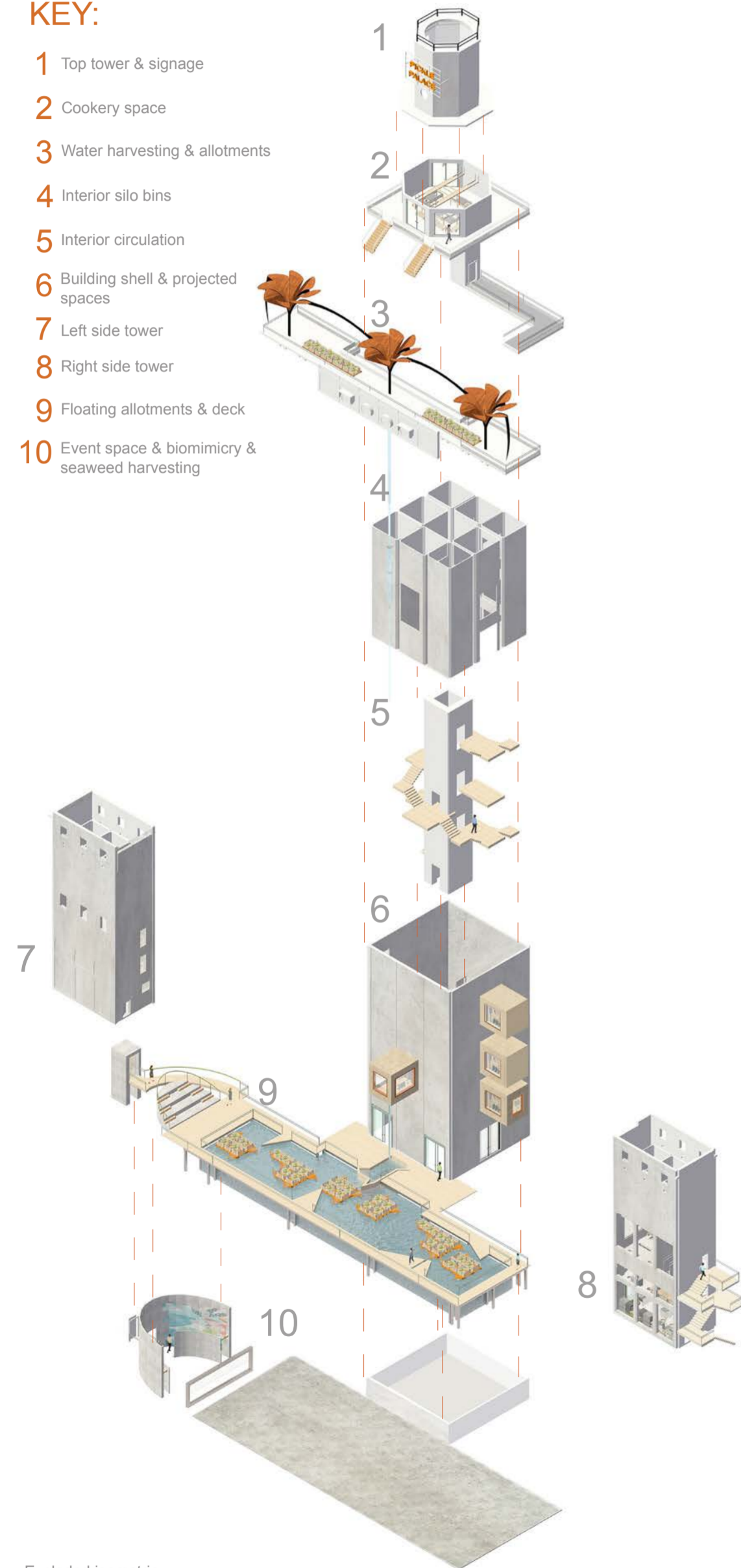




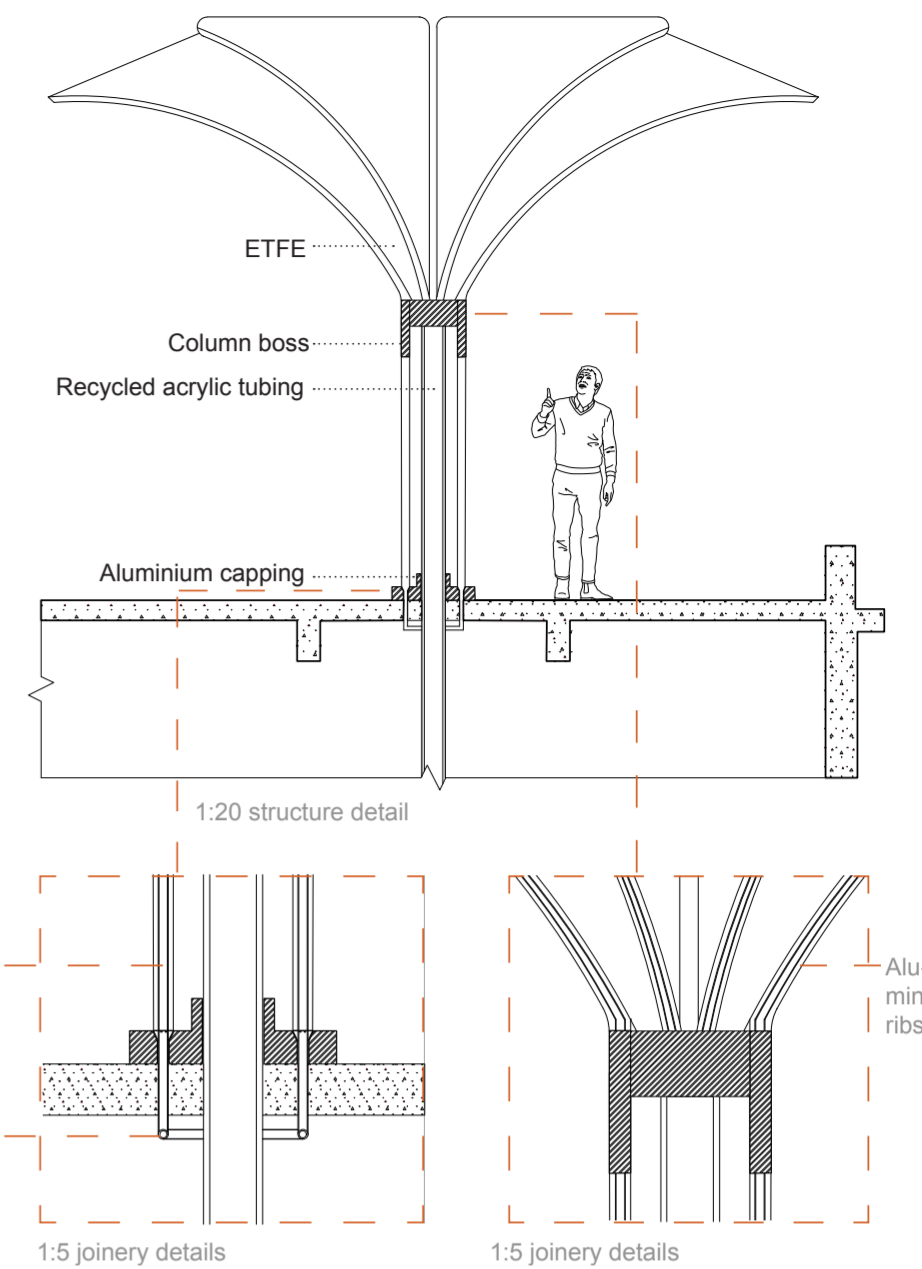
Programme  
 Illustrations represent the schemes programme starting from vegetation growing within the floating allotments and ending with the cookery classes.

**KEY:**

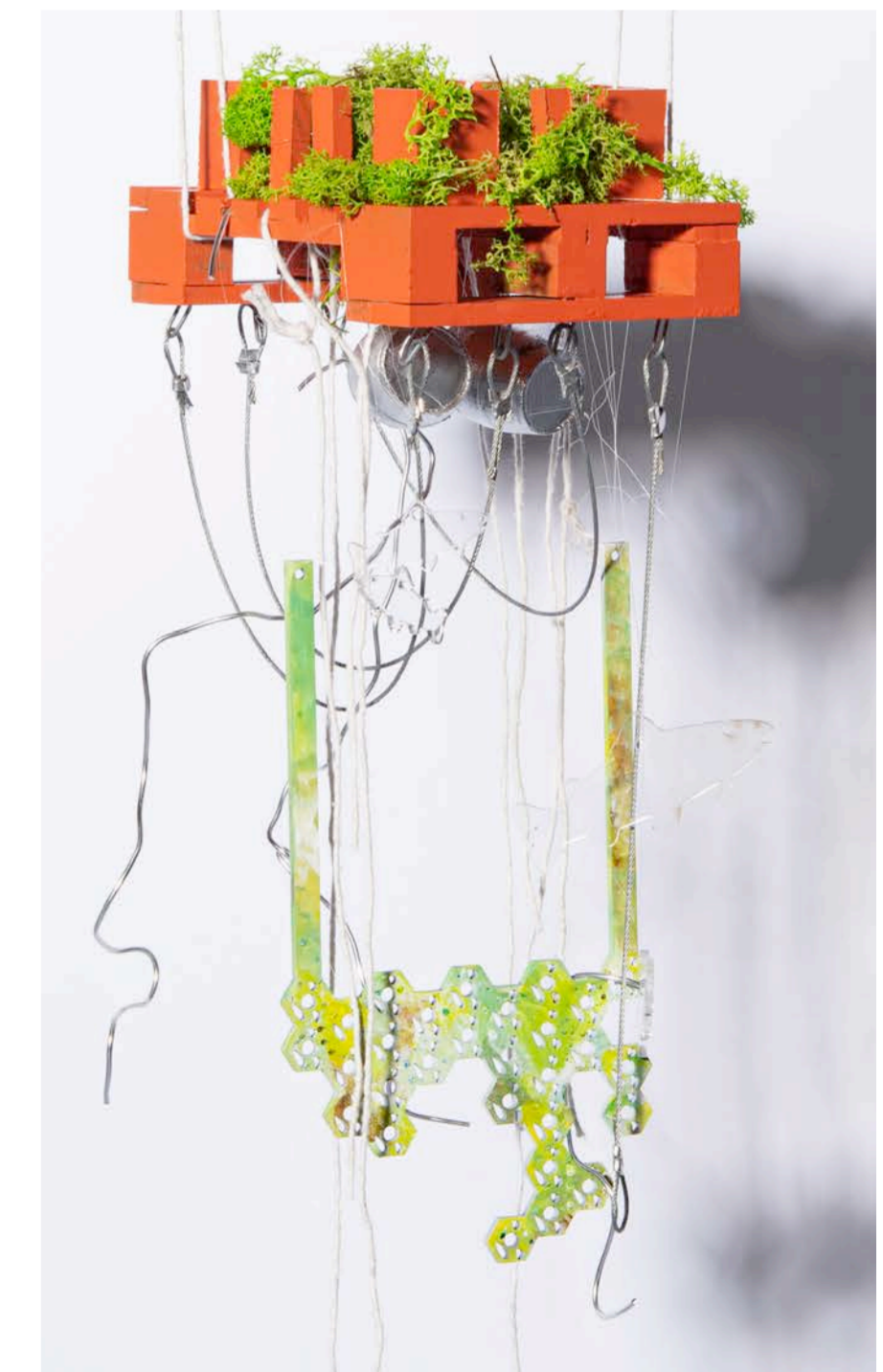
- 1 Top tower & signage
- 2 Cookery space
- 3 Water harvesting & allotments
- 4 Interior silo bins
- 5 Interior circulation
- 6 Building shell & projected spaces
- 7 Left side tower
- 8 Right side tower
- 9 Floating allotments & deck
- 10 Event space & biomimicry & seaweed harvesting



Exploded isometric

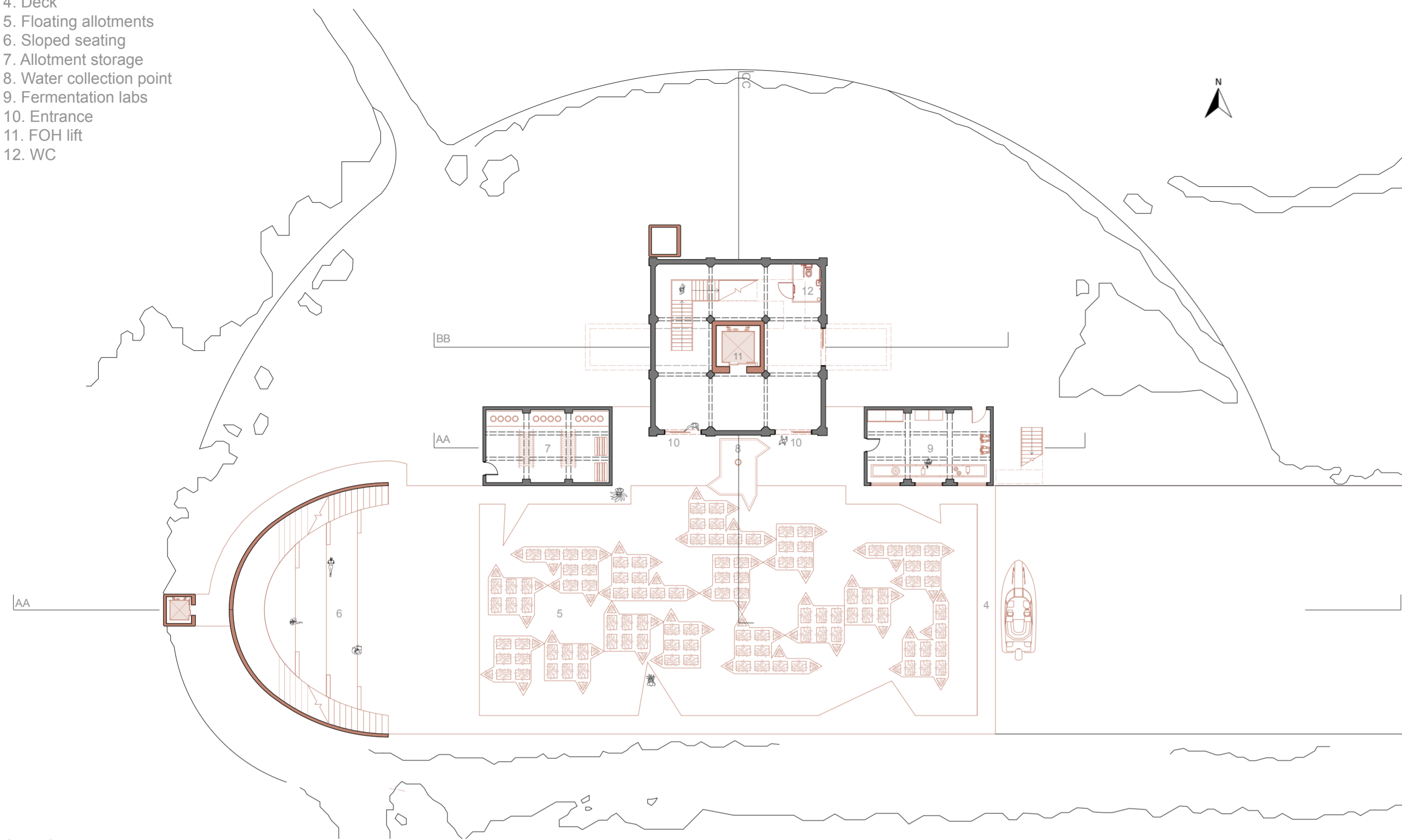


The structure evokes the configuration of a flower in both form and materiality. The scale and location demands attention to pressing issues such as the current climate crisis in regards to carbon emissions and rising sea levels. The structure slices through the left side tower, where water is consequently collected and used throughout the fermentation process.



1:50 floating allotment model.  
 Techniques include; laser cutting, 3D printing, painting, wood work and metal welding.

- 4. Deck
- 5. Floating allotments
- 6. Sloped seating
- 7. Allotment storage
- 8. Water collection point
- 9. Fermentation labs
- 10. Entrance
- 11. FOH lift
- 12. WC



Ground floor plan



Exterior visualisation: sloped seating



Interior visualisation: multi functional event space



Section BB

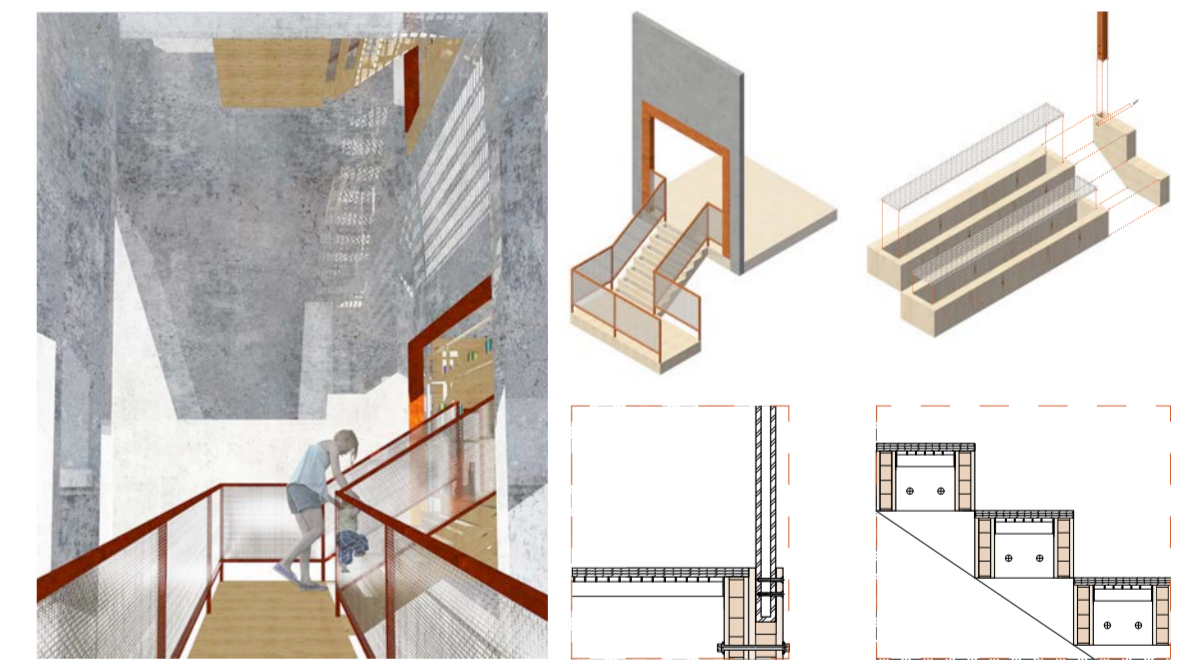
Section CC



Visualisation: Fermentation exhibition



1:1 Prototype explaining the origination and cultural heritage of the fermented produce on display, along with an introduction to the chef. Created by laser cutting type onto the pine and filling the lines with orange polyfiller.



Interior visualisation: staircase

1:5 balustrade detail

1:5 detail

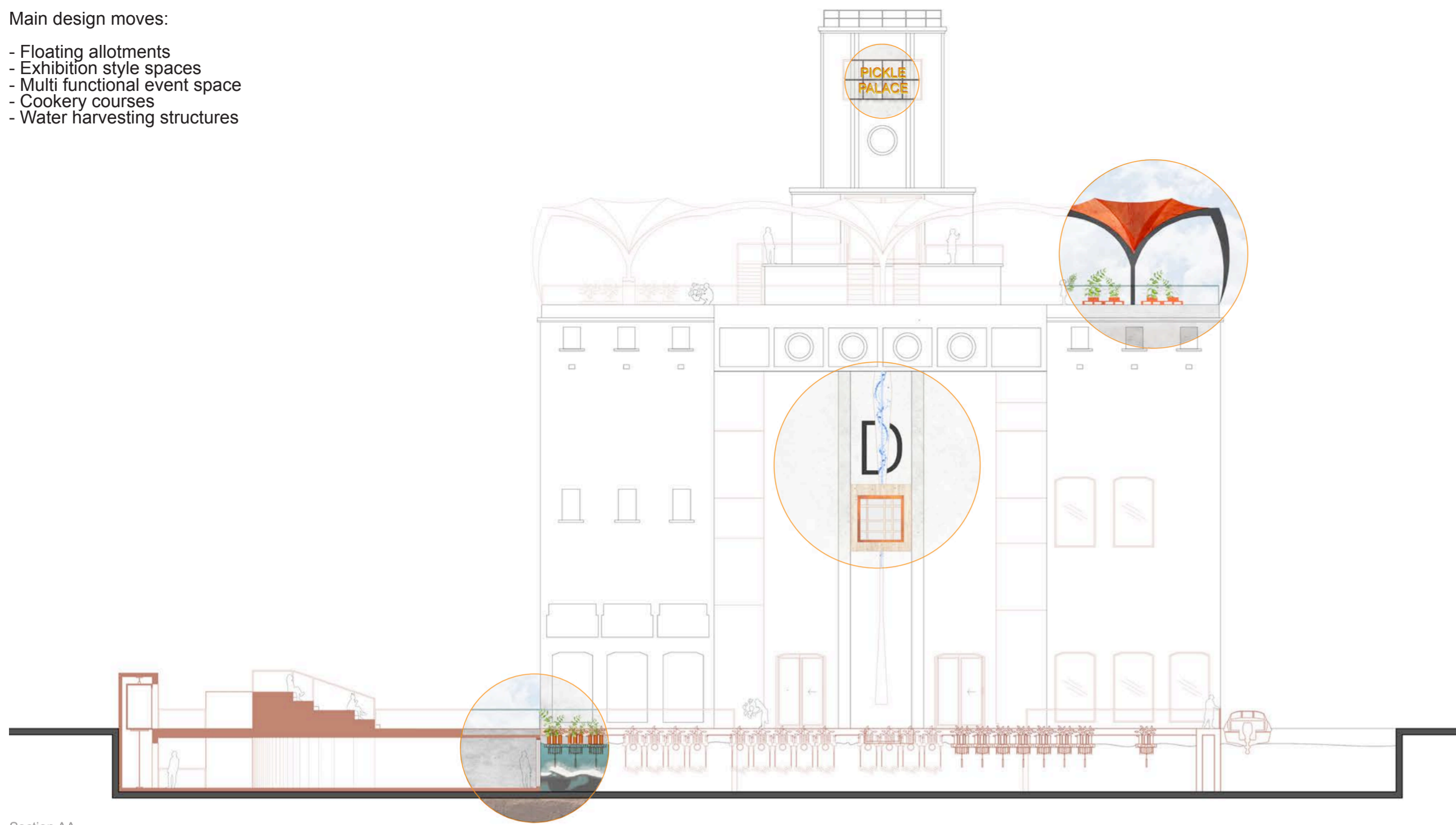
The materiality of the staircase offers orange galvanised steel, recycled aluminium mesh and CLT. The staircase wraps around the main headhouse whilst carving spaces out of the interior silo bins.



Exterior visualisation: allotments & entrance

Main design moves:

- Floating allotments
- Exhibition style spaces
- Multi functional event space
- Cookery courses
- Water harvesting structures



Section AA



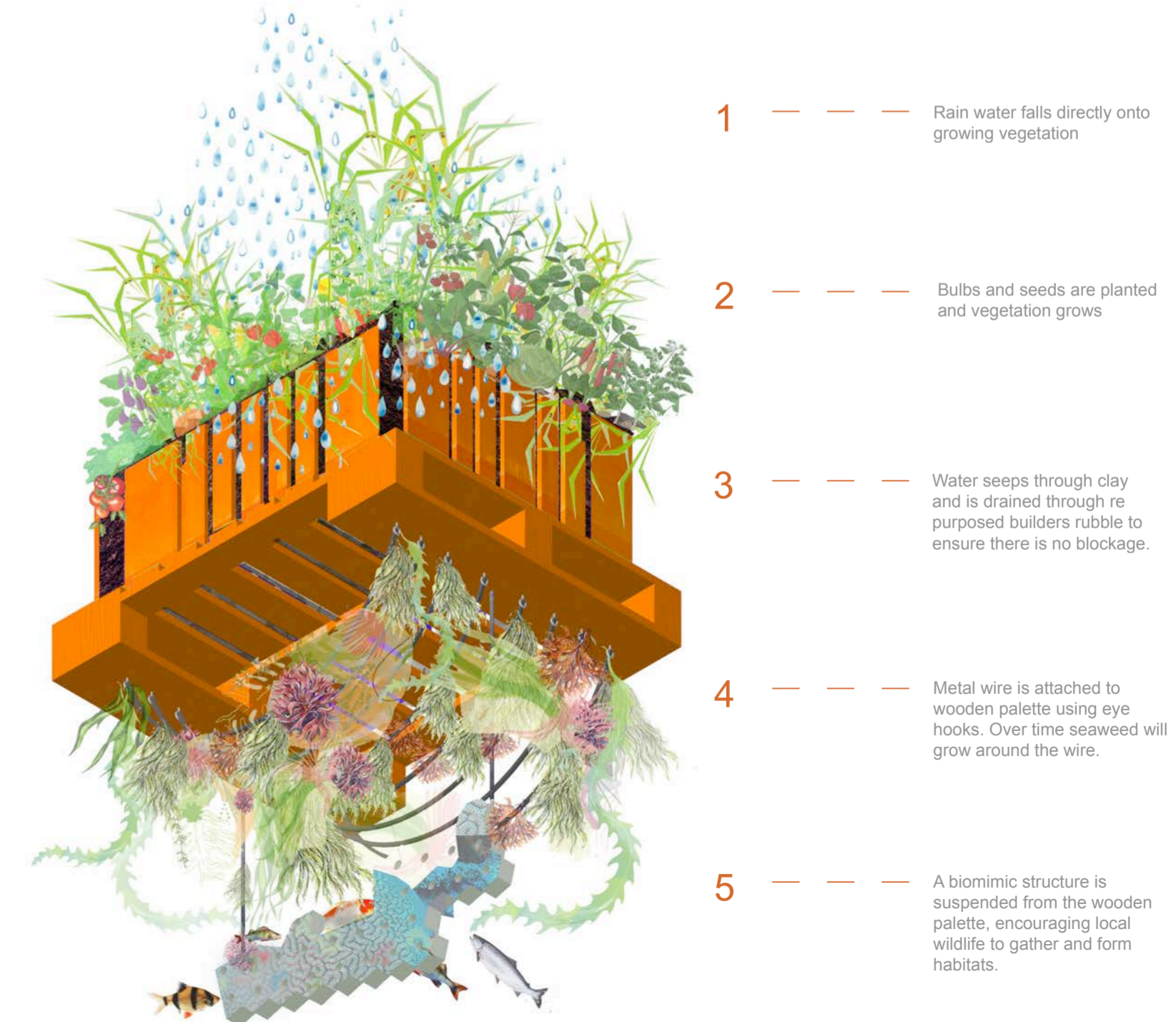
Event space visualisation

Visualisation representing the underwater event space. The space is intended to be used for events, potentially booked out independently to the rest of the scheme. The underwater allotment structures serve as an engaging and informative backdrop to the space.



Proposed materiality

Proposing lightweight materials to juxtapose the heavy and industrial nature of the reinforced concrete silo. I am using surfaces which are playful in colour, easily accessed through local sites, and durable, to ensure sustainability is at the heart of my scheme

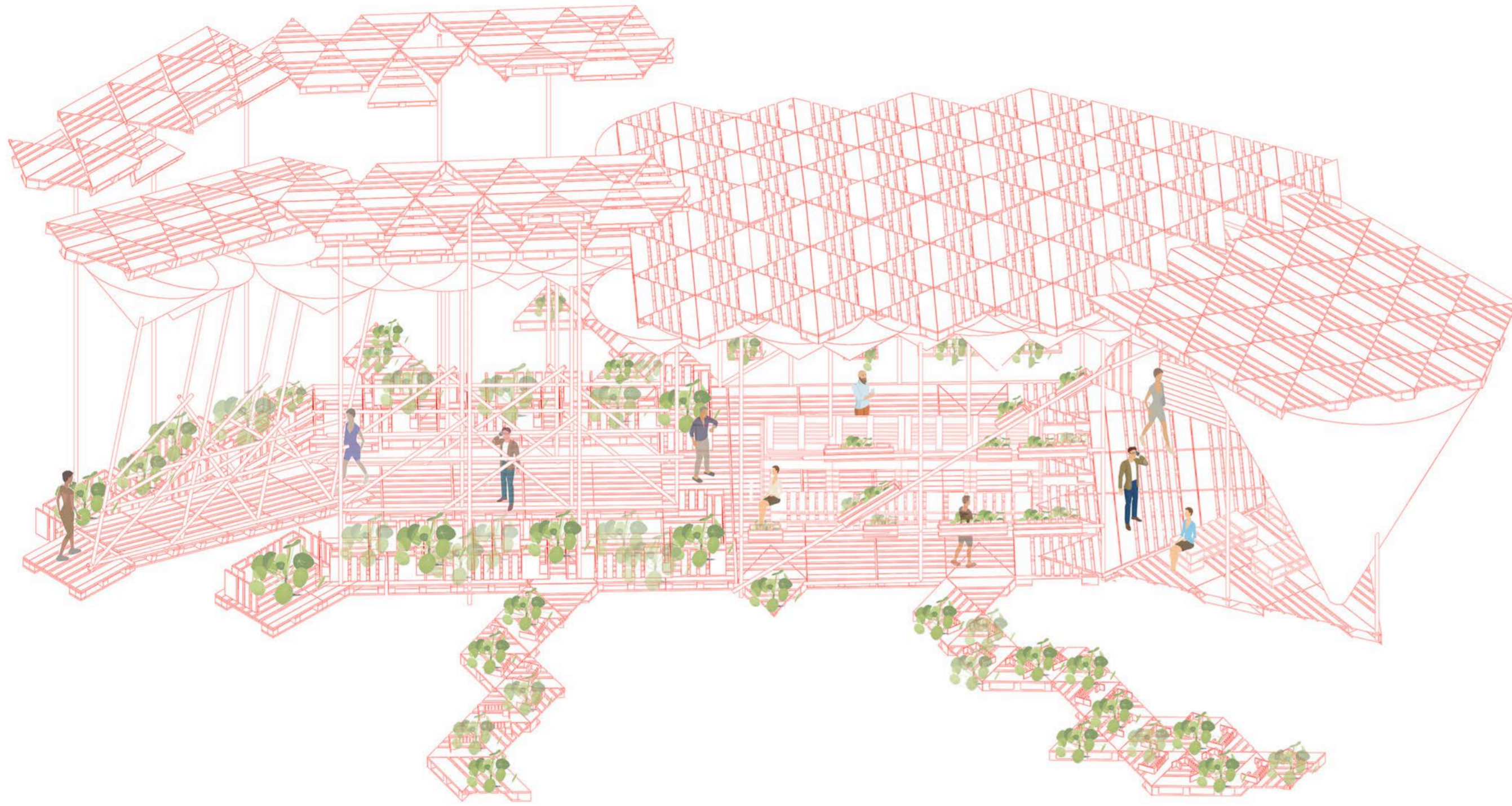


Allotment illustration

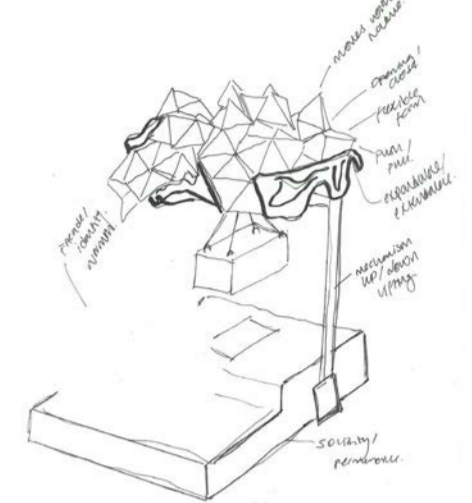
- 1 — — — Rain water falls directly onto growing vegetation
- 2 — — — Bulbs and seeds are planted and vegetation grows
- 3 — — — Water seeps through clay and is drained through re-purposed builders rubble to ensure there is no blockage.
- 4 — — — Metal wire is attached to wooden pallet using eye hooks. Over time seaweed will grow around the wire.
- 5 — — — A biomimic structure is suspended from the wooden pallet, encouraging local wildlife to gather and form habitats.

# The picnic exchange: Pop up

The picnic exchange aimed to serve as a teaser for what is to come from the final proposal. The design proposes a three month self sufficient floating eatery for the use of the Silvertown community. The scheme intends to inform the public about sustainable food sourcing through floating allotment style platforms, which within them selves create habitats for the local ecology. I intend the experience to be joyful through the accessible camping equipment encouraging the public to simply gather and eat with one another.

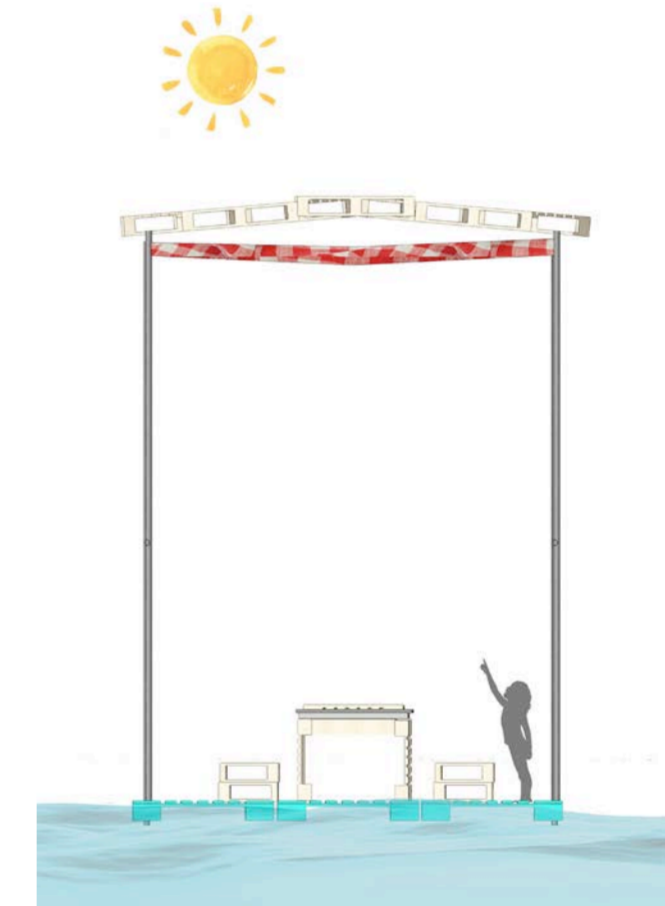


Proposed pop up line drawing



Concept visualisation

A playful and abstract model created at concept stage, loosely representing ideas of identity, dynamism and community. Made using a range of techniques such as plaster casting, stitching, welding and laser cutting.



Water harvesting roof structure

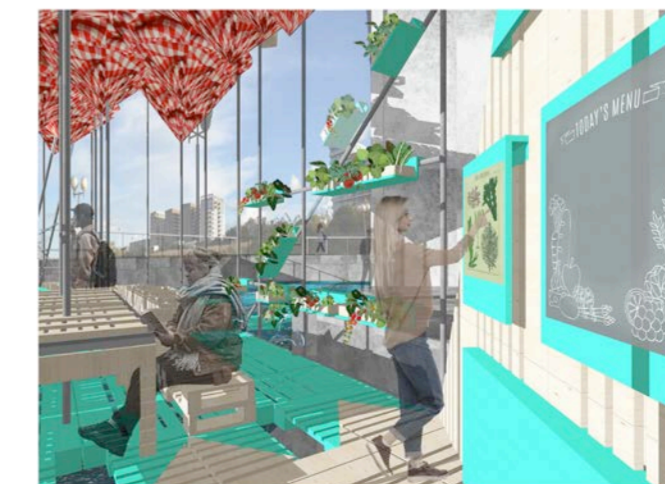
Textile design inspired by the iconic table cloth print. Aiming to create an inviting, engaging and familiar feeling to encourage people to gather with one another. As rain falls, it is collected in the textile, creating a sculptural and dramatic experience whilst practically collecting water to use within the programme.



Concept collage

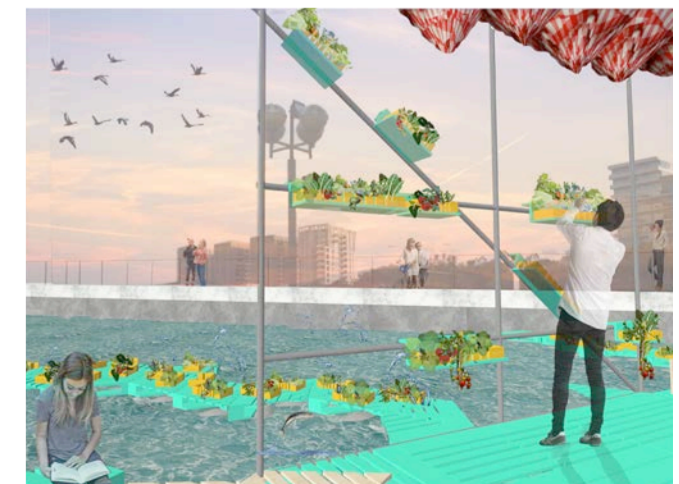


Concept visualisation



Interior view

Interior view representing the seating, growing and educational space the scheme offers. Design aims to be accessible, inviting and informative



Interior view

Interior view representing the growing, seating and floating allotments.