

# Adaptive Re-use: Sheep Hub



This project proposes a dynamic, community-focused space dedicated to educating visitors about the life cycle of sheep and the wool processing journey.

It serves as both an educational space and as a place to gather, featuring interactive elements that trace the journey of processing wool whilst teaching sustainable practices such as loom, knitting, producing and re-purposing garments to sell.

A café, shop and garden are integrated into the design, creating opportunities for reflection, social interaction and community connections.

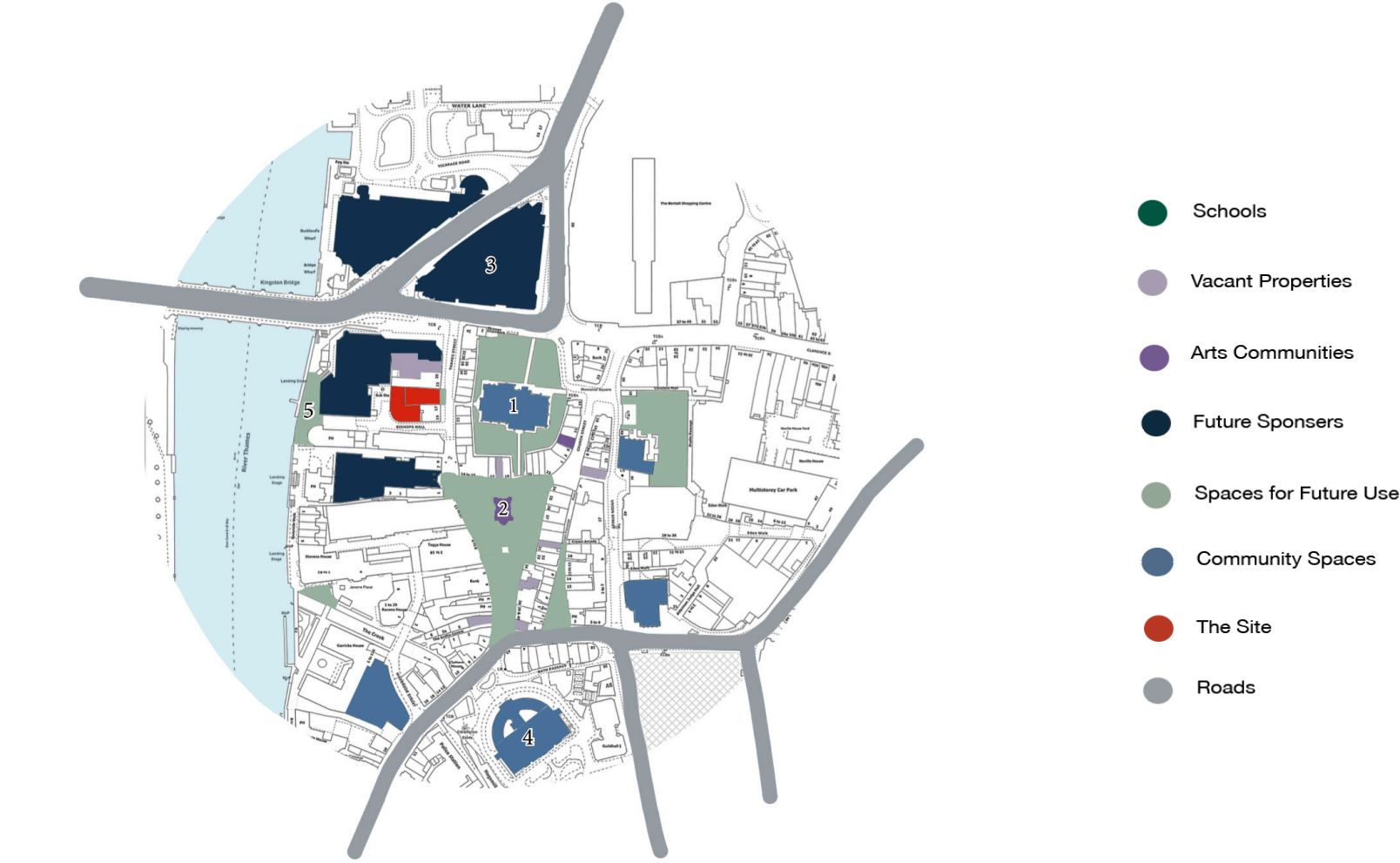
The design of the space prioritises the connection between visitors and the sheep for instance, a glass corridor in the shop offers a direct view of the sheep. The experience of the space is enhanced by the use of natural materials and an adaptable layout that encourages exploration and learning.

By developing an appreciation for sheep farming and the craft of wool processing, the sheep hub not only preserves heritage knowledge but also celebrates contemporary sustainable design, encouraging visitors to engage with the environment.

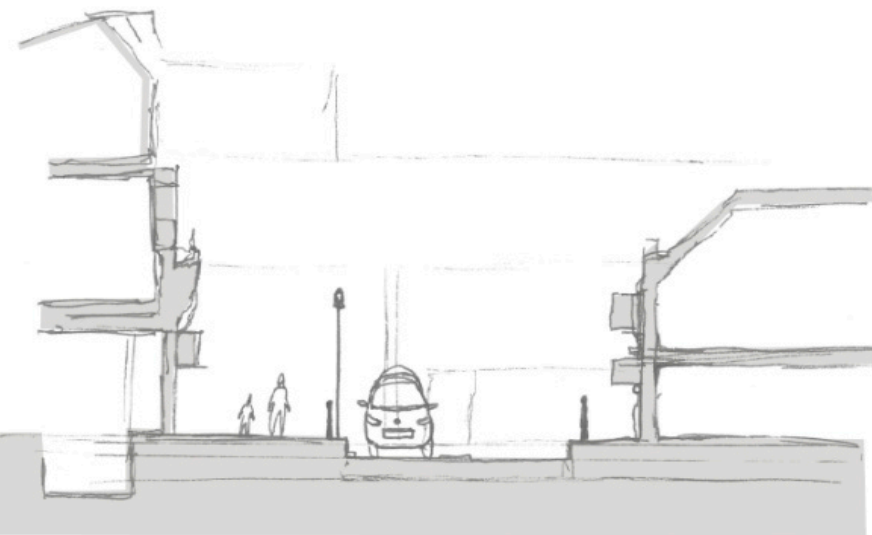


CONTEXTUAL COLLAGE

The site is located in Kingston upon Thames, a historic market town in southwest London, situated on the banks of the River Thames. Today, Kingston is known for its vibrant town centre, market and green spaces.



SURROUNDING AREA



Section of site and street



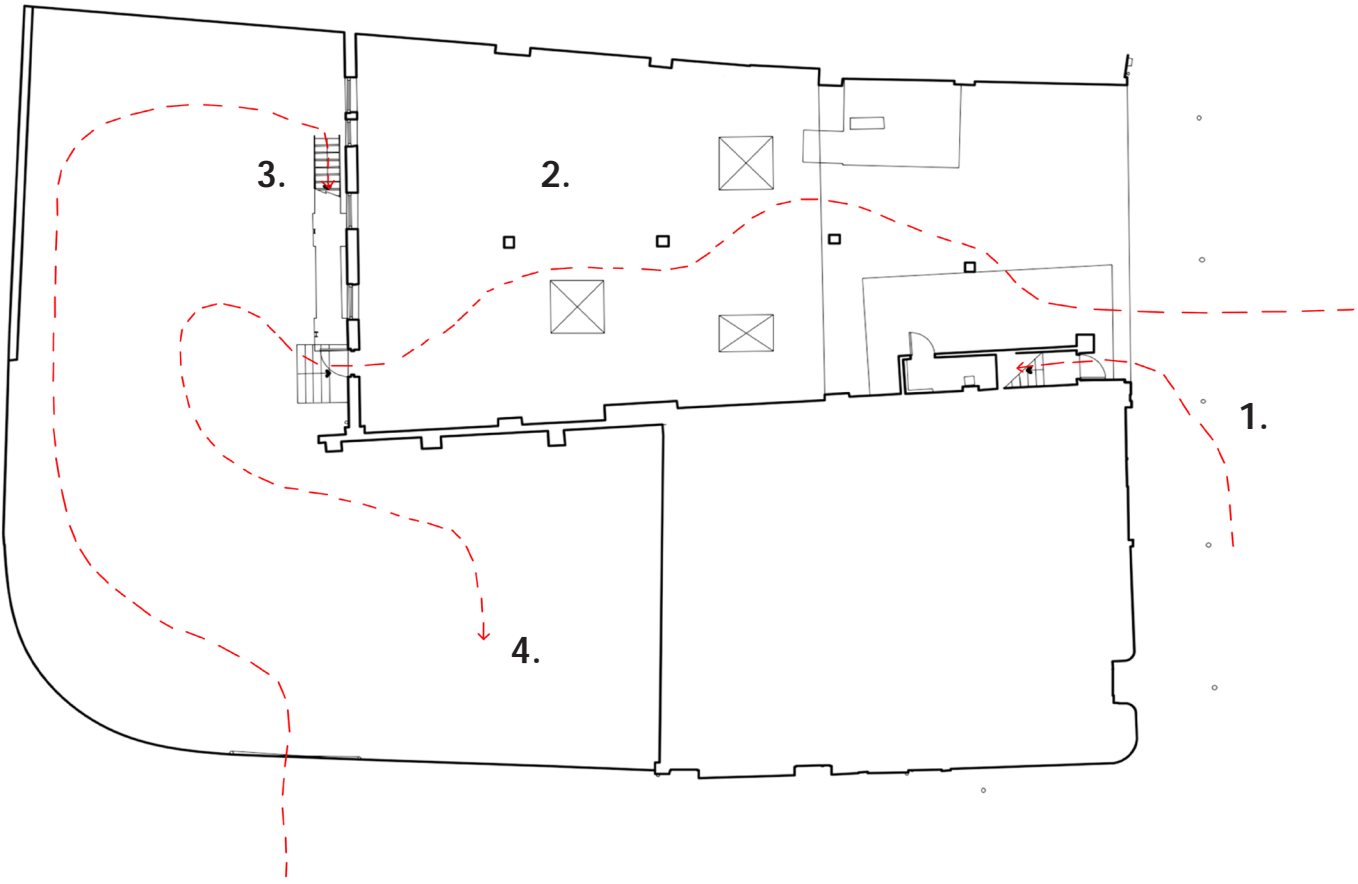
View facing the east facade

CURRENT CIRCULATION AND INTERIOR VIEWS

- 1. Exterior of the building at street view.
- 2. Central space within the interior of the building.



- 3. Exterior staircase for roof access.
- 4. Overview of car park facing east of the site.

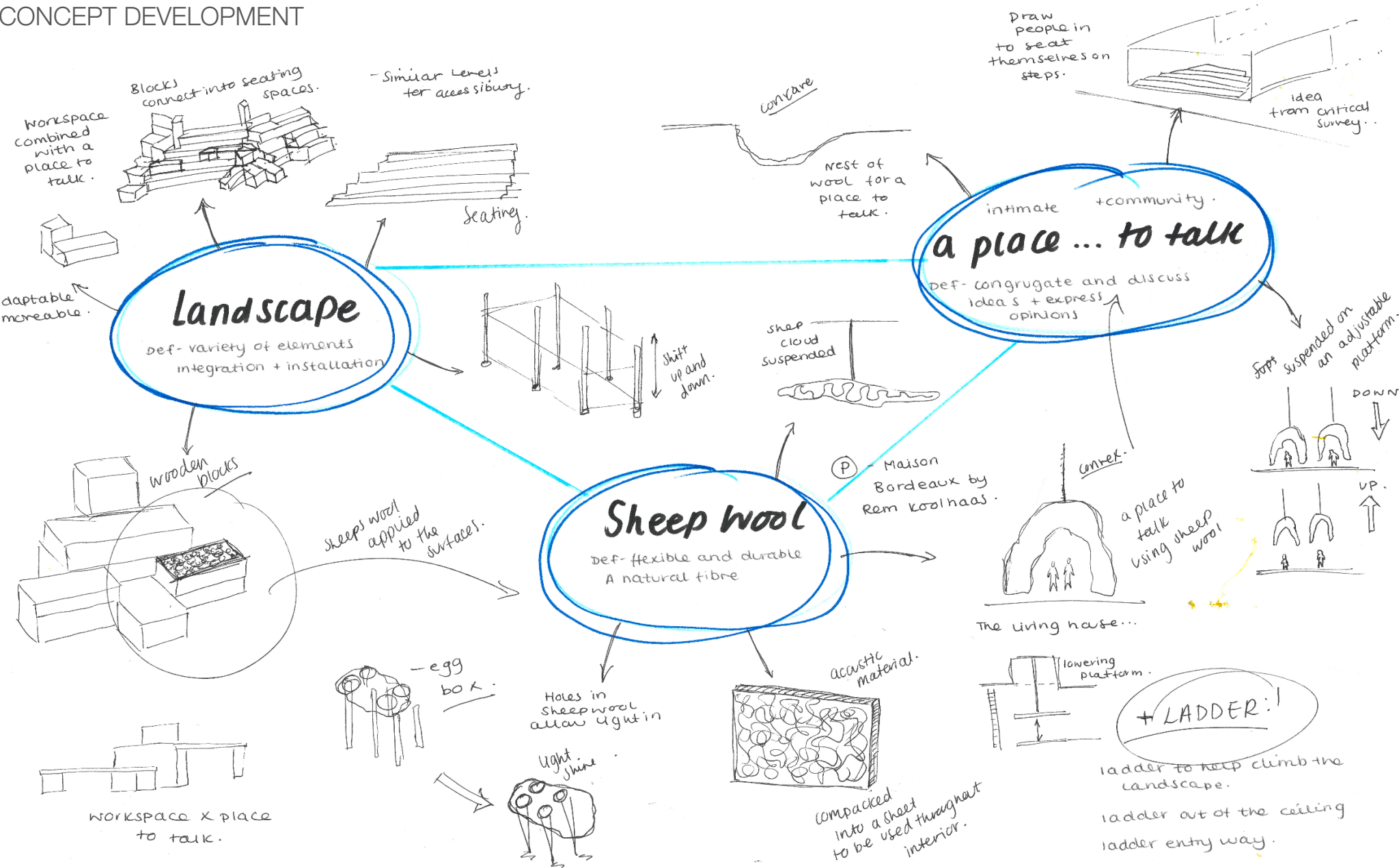


STREET VIEW IMPRESSION OF THE SITE

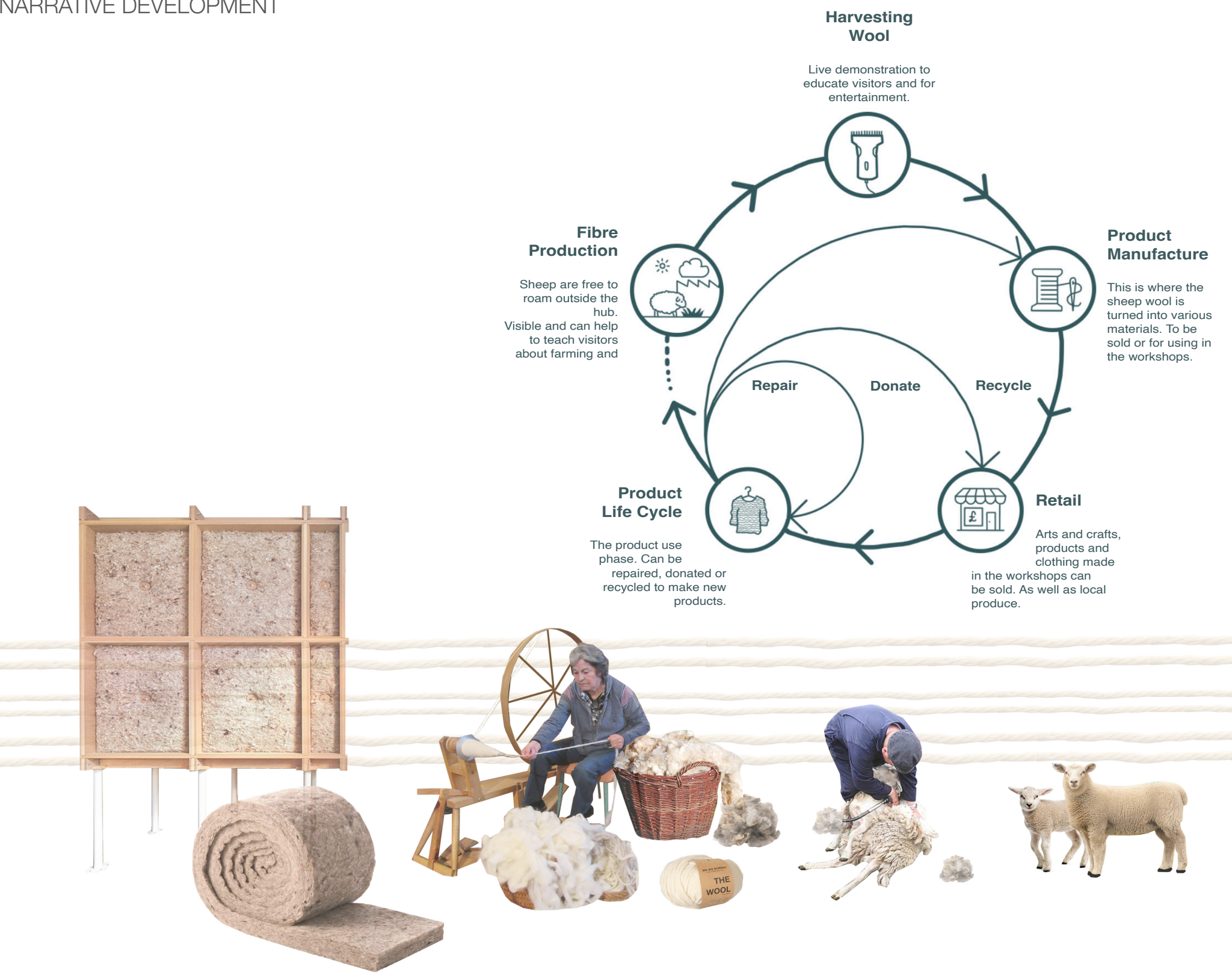




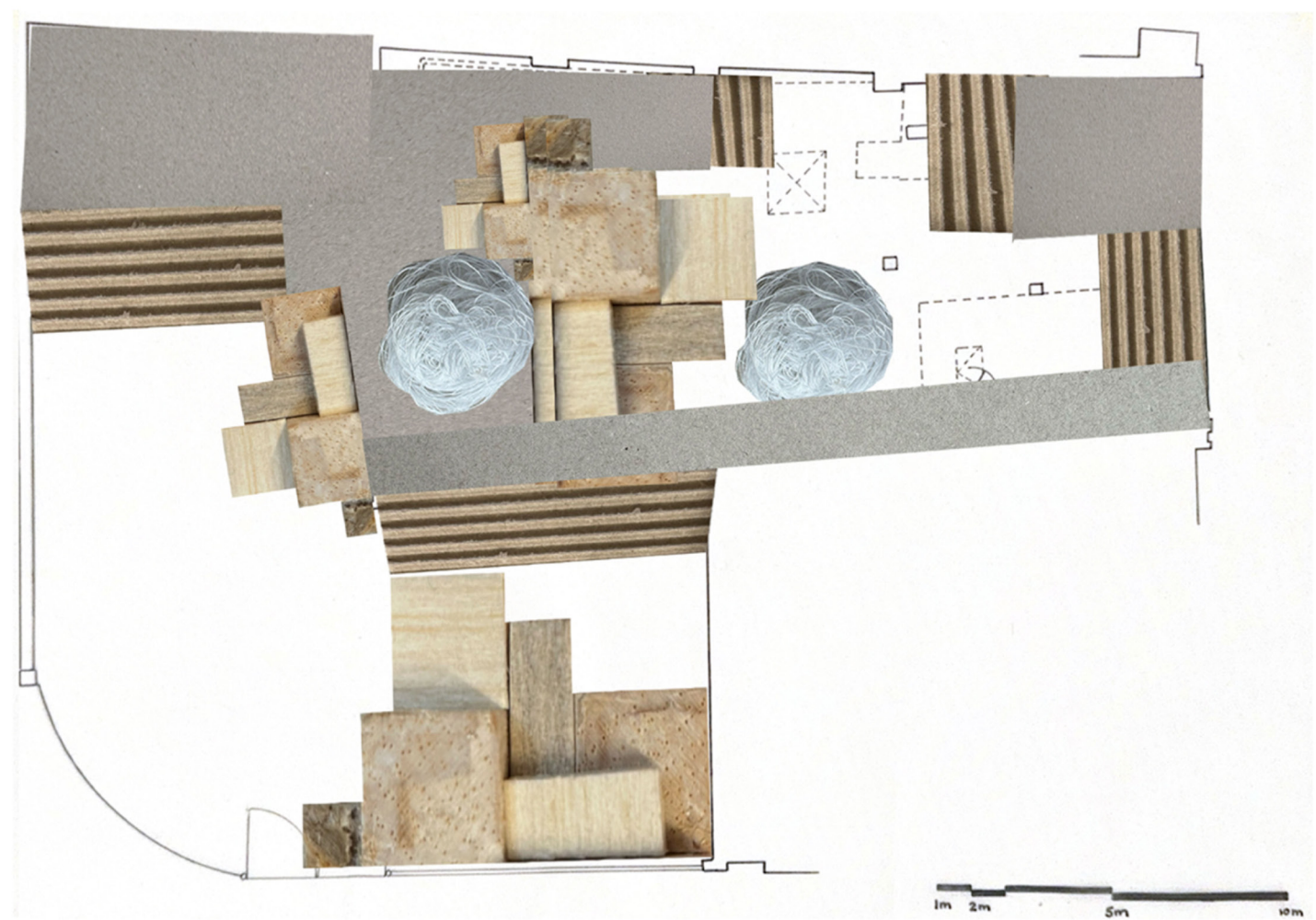
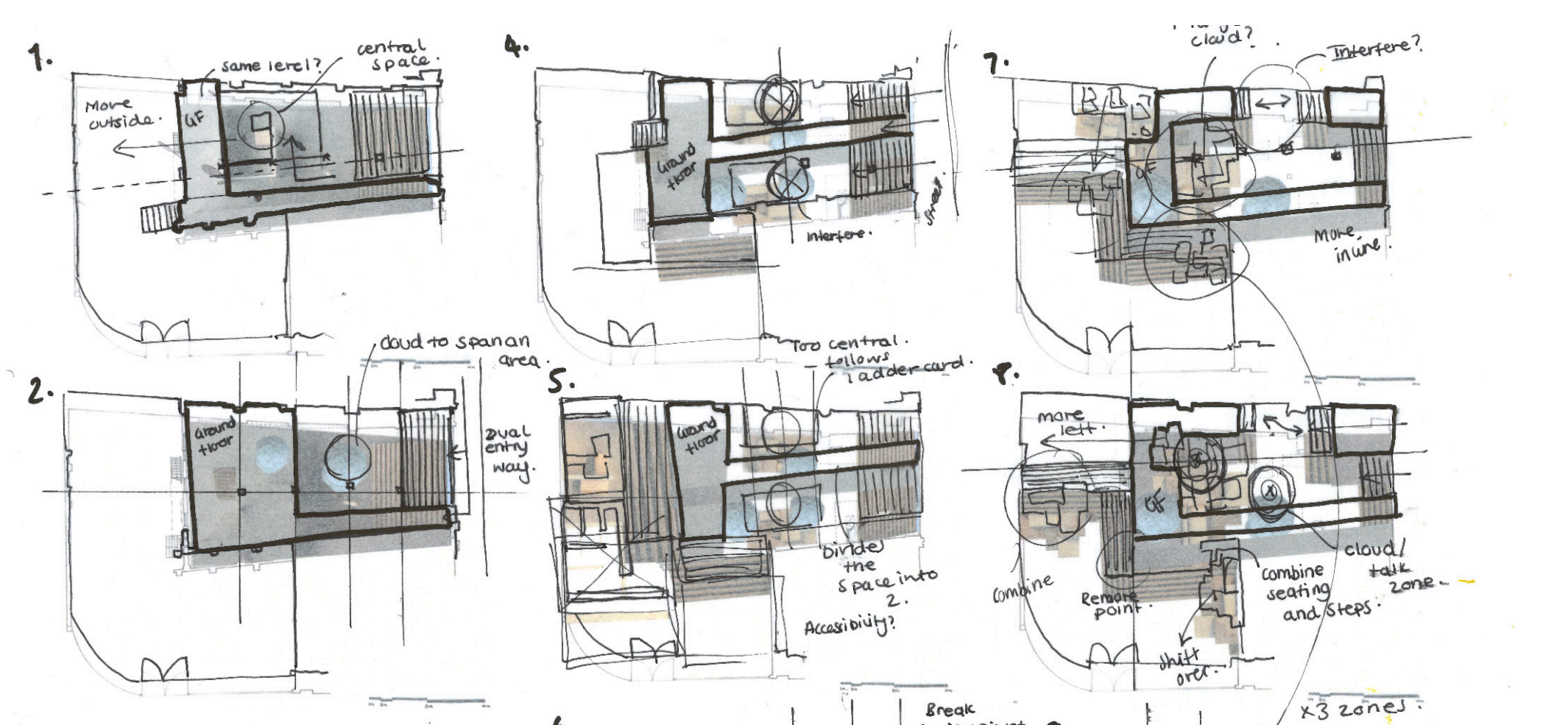
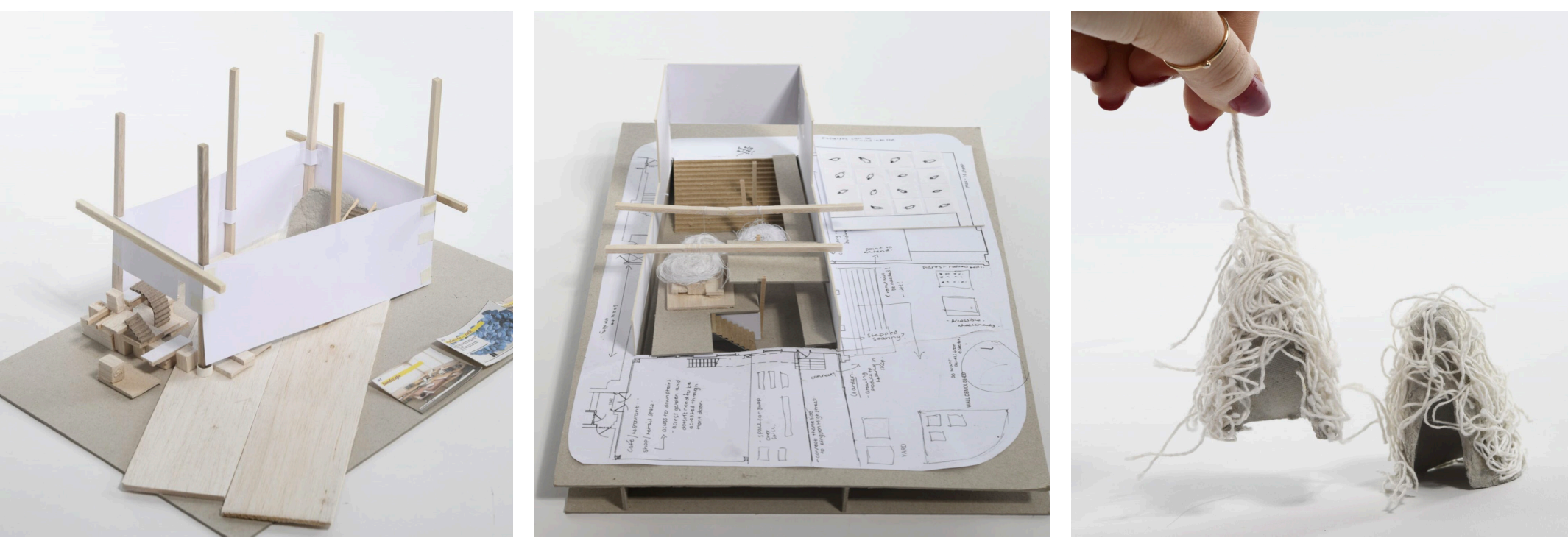
CONCEPT DEVELOPMENT



NARRATIVE DEVELOPMENT



DESIGN PROCESS





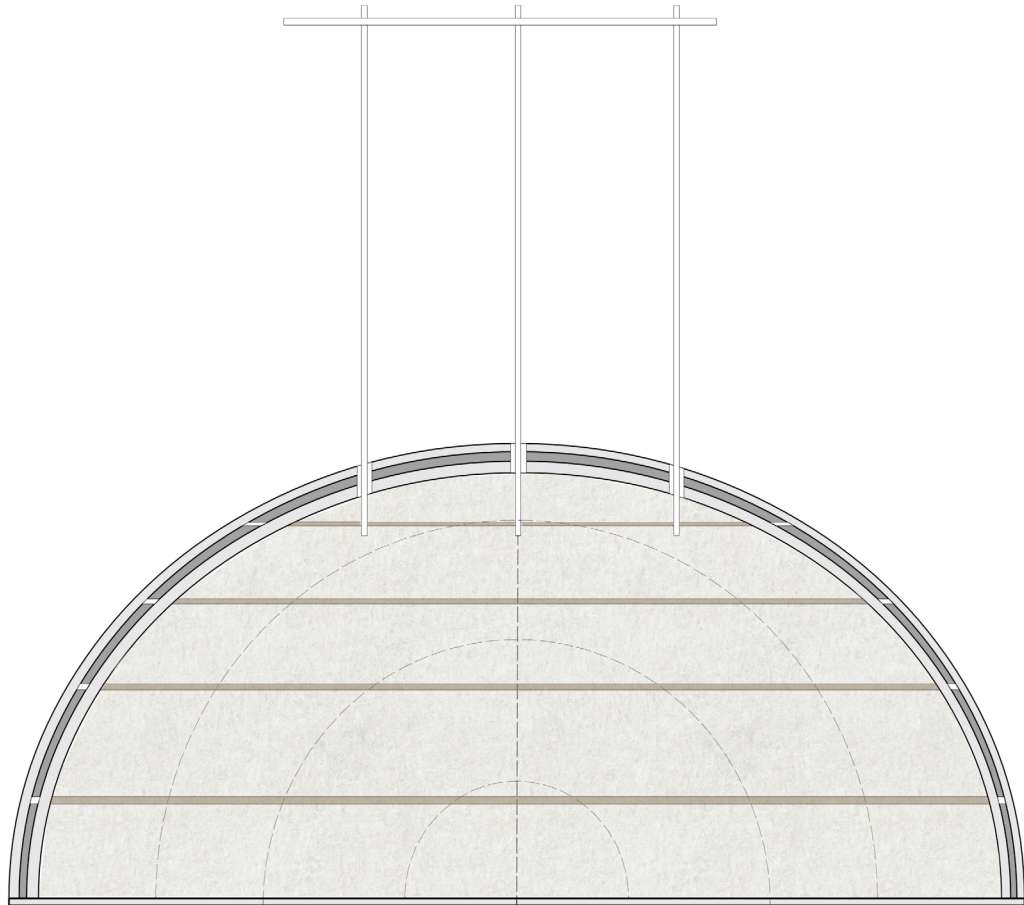
LOWER GROUND FLOOR



GROUND FLOOR



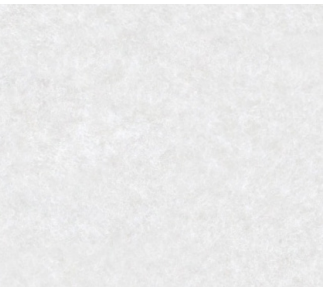
CLOUD PODS



Wool insulation between the metal frame and the fibres

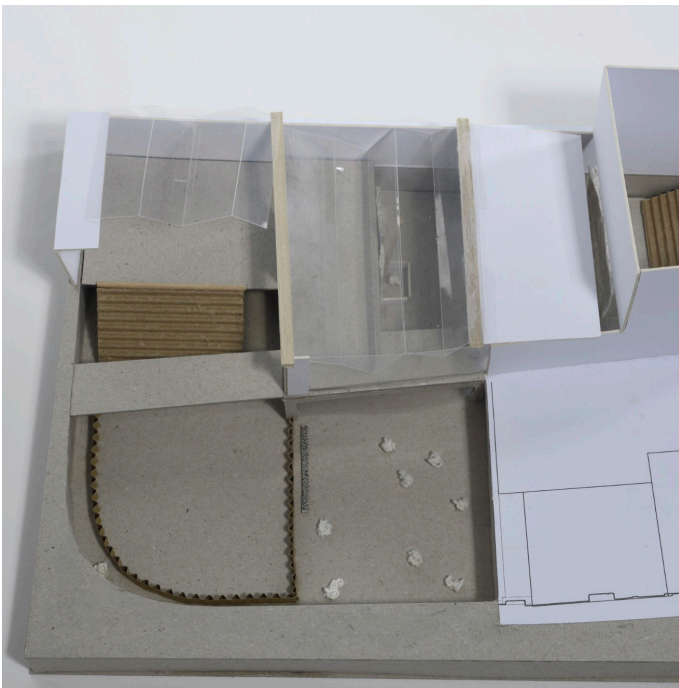


Pine strips help to support the over all frame

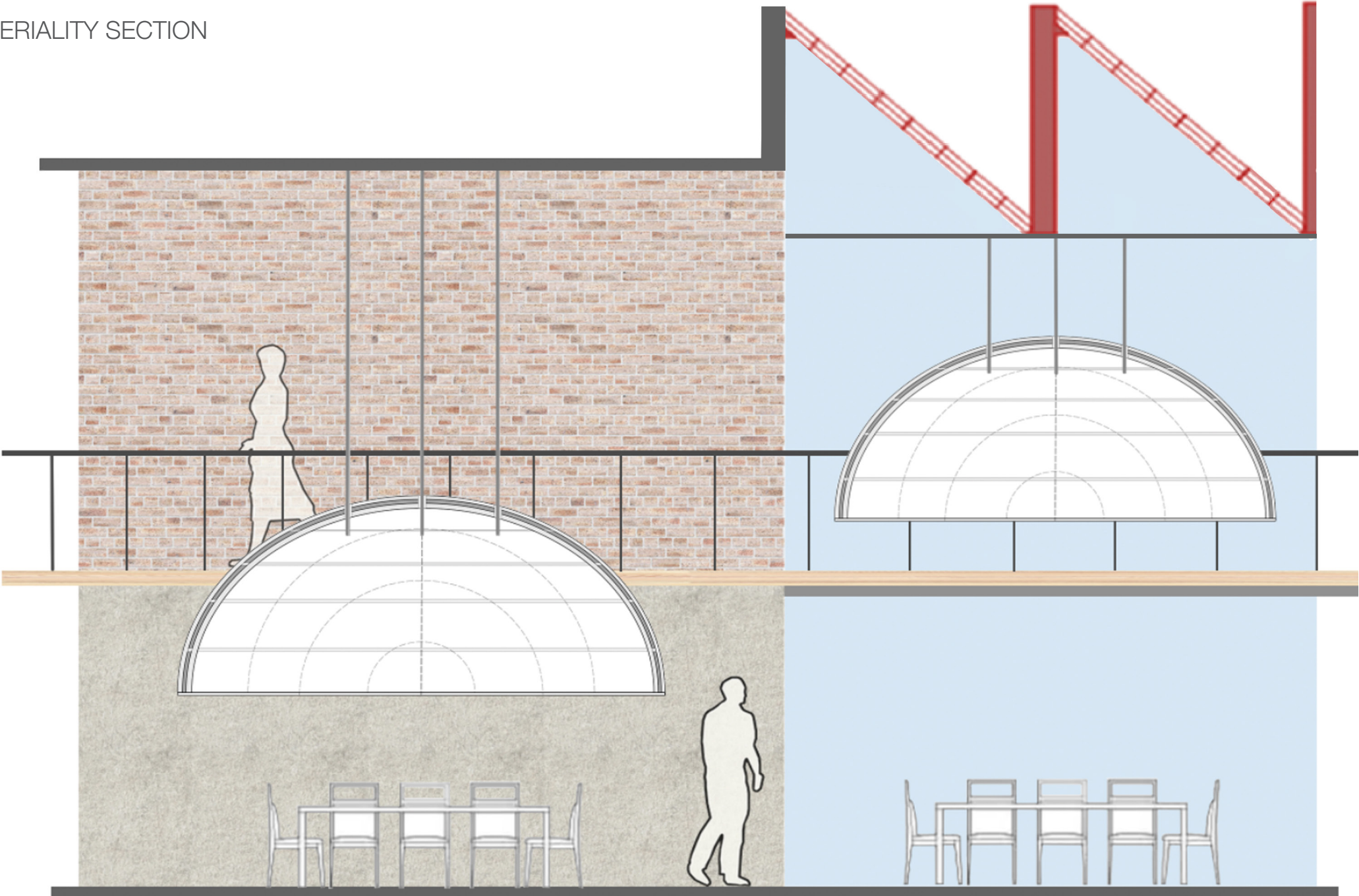


Wool fibre spread across the surface

3D MODEL

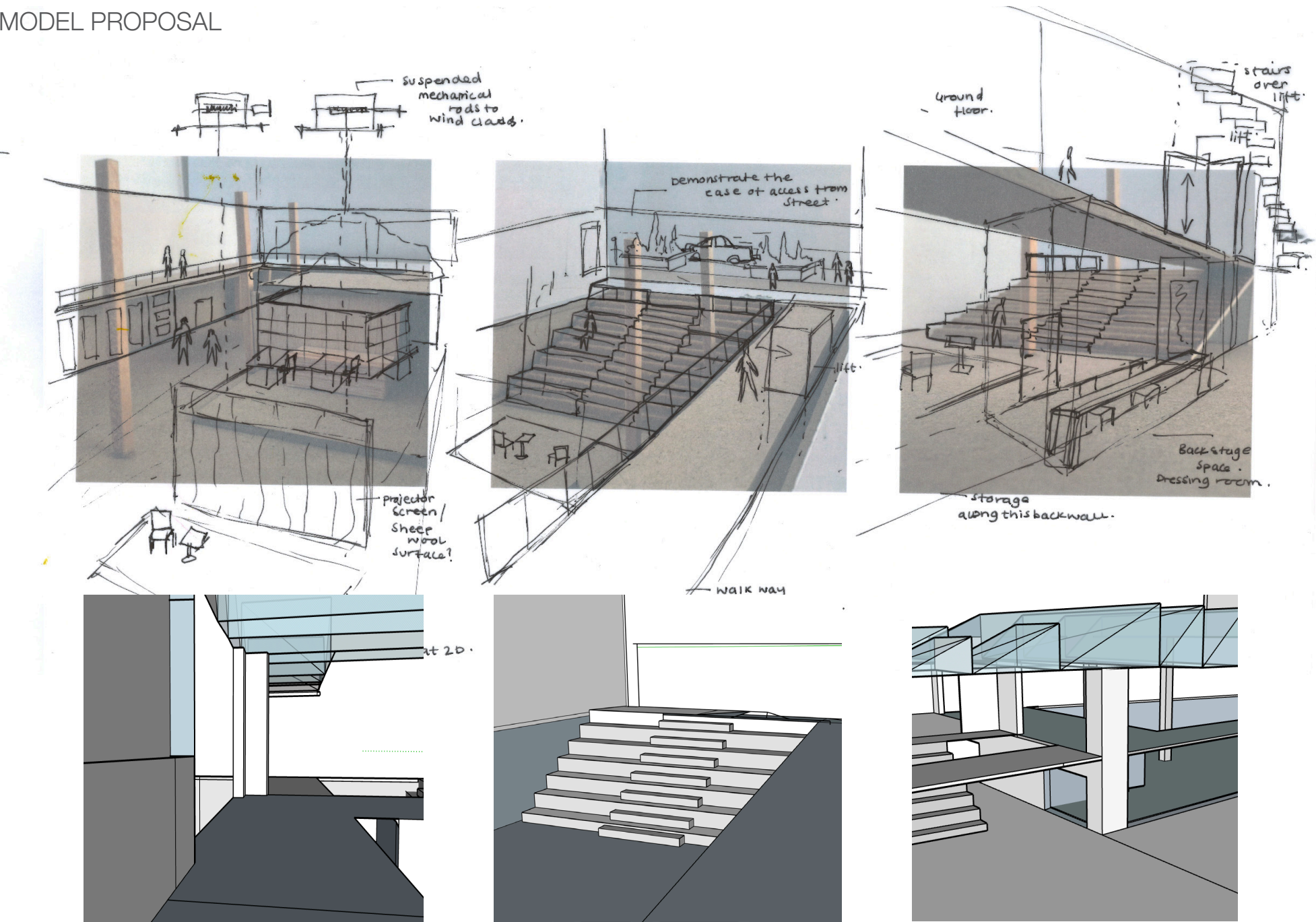


MATERIALITY SECTION





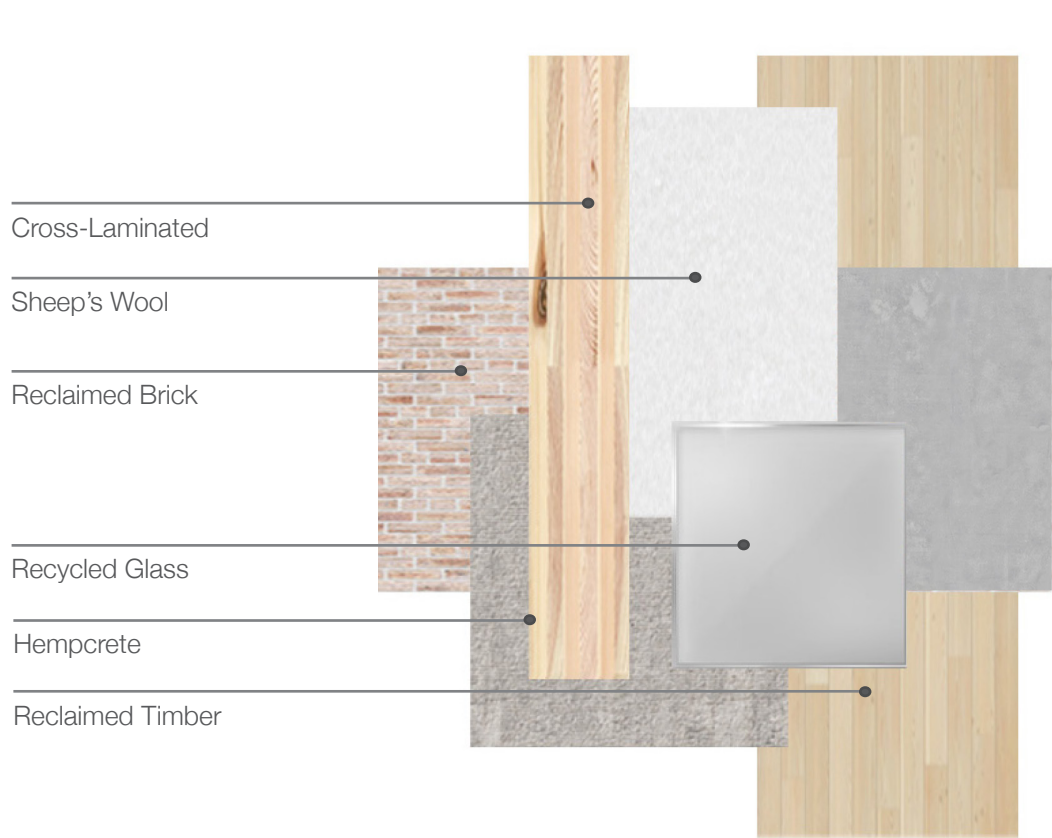
MODEL PROPOSAL



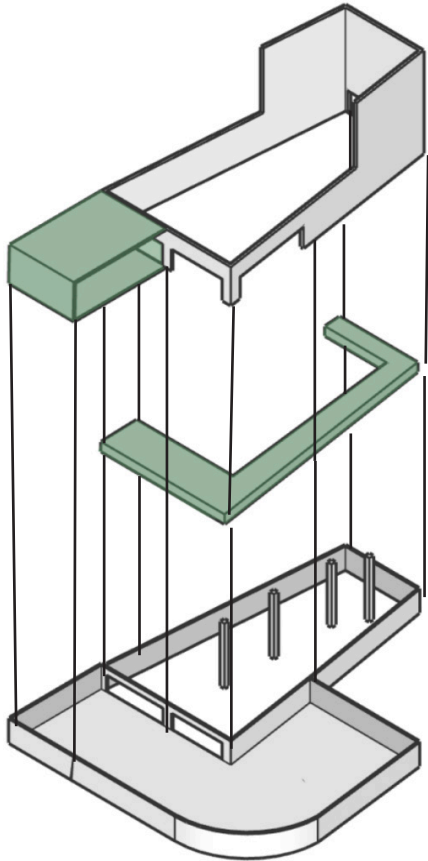
SECTION A-A OF PROPOSAL



MATERIAL PALETTE



EXPLODED AXONOMETRIC



MATERIALITY SECTION

This section demonstrates the functioning of the sheep corridor in the shop.

