



Main Entrance - Where the aroma guides the start of the journey

Kingston's Candle Sanctuary

Tracing Tradition, Transforming Ritual: A sensory Journey through aroma, memory, and slow-making

The project reimagines Kingston's Bishop Palace House located along the River Thames by reintroducing Kingston's forgotten candle-making heritage creating a sanctuary beyond religion. Candles have long played a role in religious rituals, prompting me to reflect on how sacred spaces are reinterpreted today and candles use as aromatherapy for relaxation. My goal is to reactivate the riverside as a site of meaning and memory.

As younger generations grow more culturally diverse and church attendance declines, many churches have been transformed into community hubs, arts venues, and spaces for collective gathering. My project draws from this shift, exploring how ritual and atmosphere can be reimagined.

The proposal includes a public aroma garden, a candle-evolution sanctuary, and a relaxation chamber — designed to reconnect the community with nature, craft, and relaxation. By repurposing used cooking oil into aromatherapy candles, the project supports sustainable making while tracing the evolution journey of Candle-Making, offering a space for reflection, relaxation, and connection through scent and rituals.

Restaurants and Cafes at Kingston

- The Site
- Restaurants and Cafes



With Kingston's densed F&B scenes, where cooking oil waste is a concern. This material, often discarded, though has the potential to be transformed into candles, offering a sustainable alternative that combines environmental awareness with the sensory and symbolic value of making.



Reviving kingston's candle making heritage to create a modern sanctuary space offering a place of reflection, relaxation and connection.

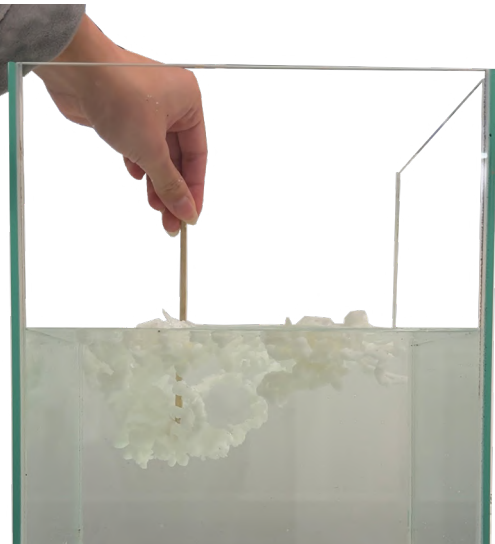
Concept Collage



Layered Fluid

Light

Echoing the Slow Melt of Candle



Organic

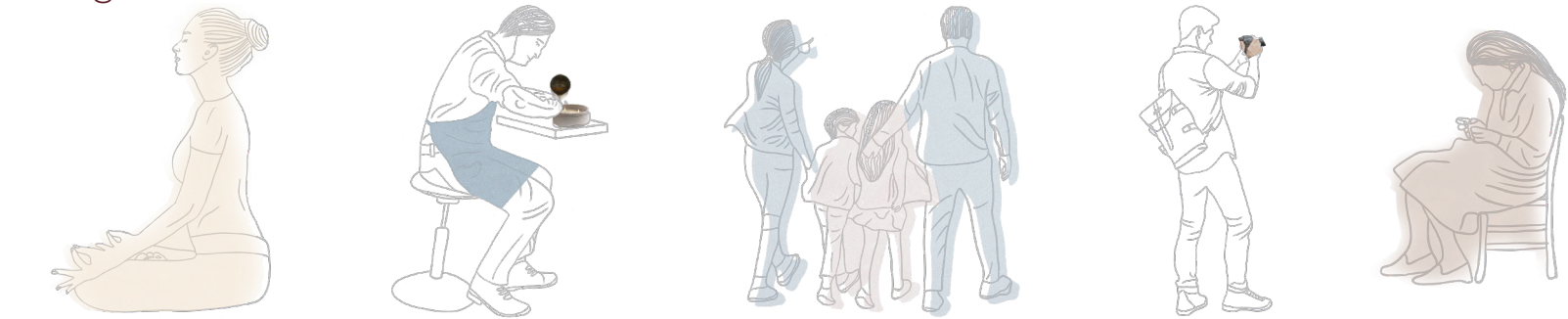


Abstract



Sensorial quality through material presence

Target



WELLNESS SEEKERS THE CREATIVES FAMILIES TOURISTS THE SOLITARY

Audience

3 Spaces
=
3 Experiences

BUILDING PROGRAMME

- Existing Building
- Design Intervention

JOURNEY 1

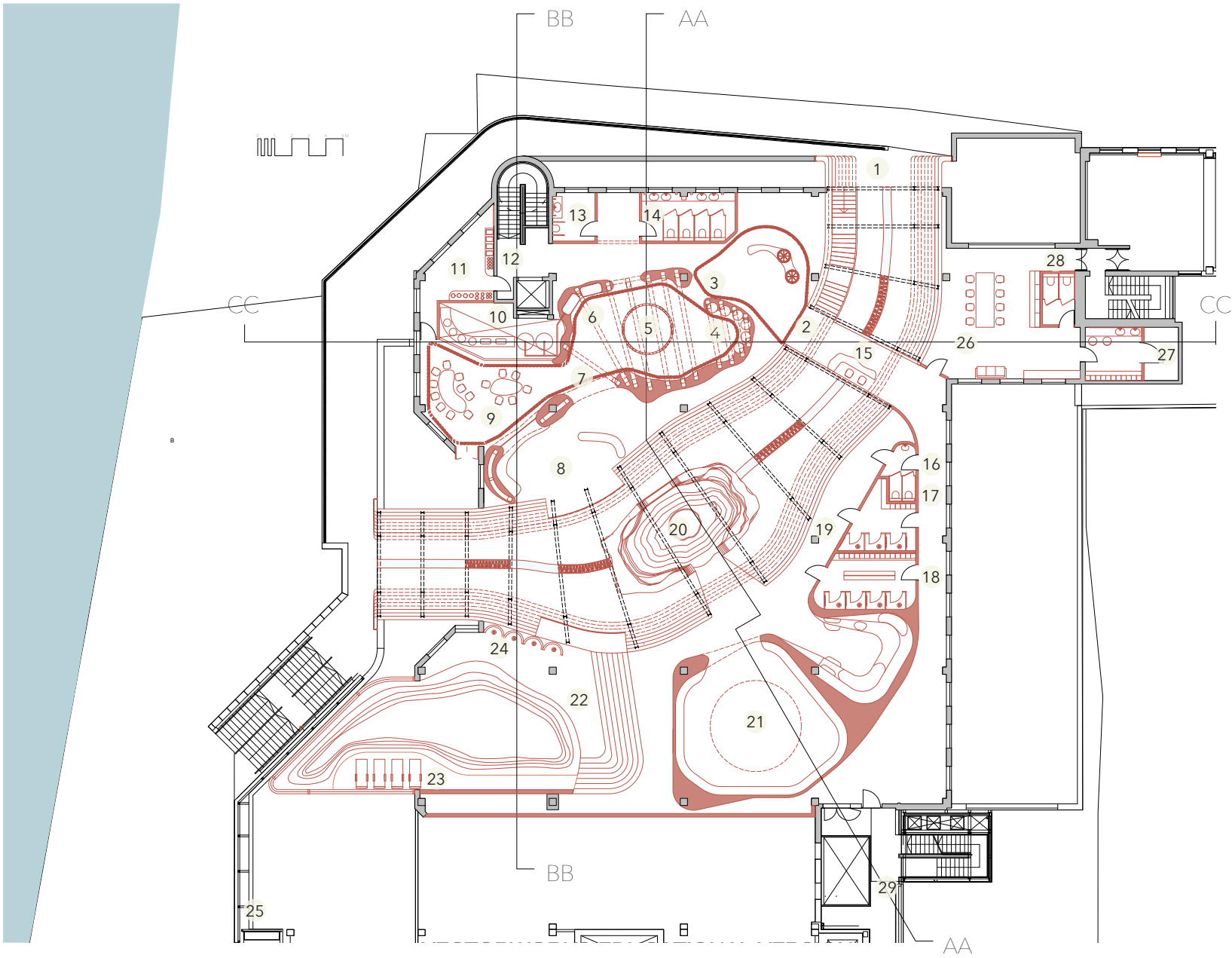
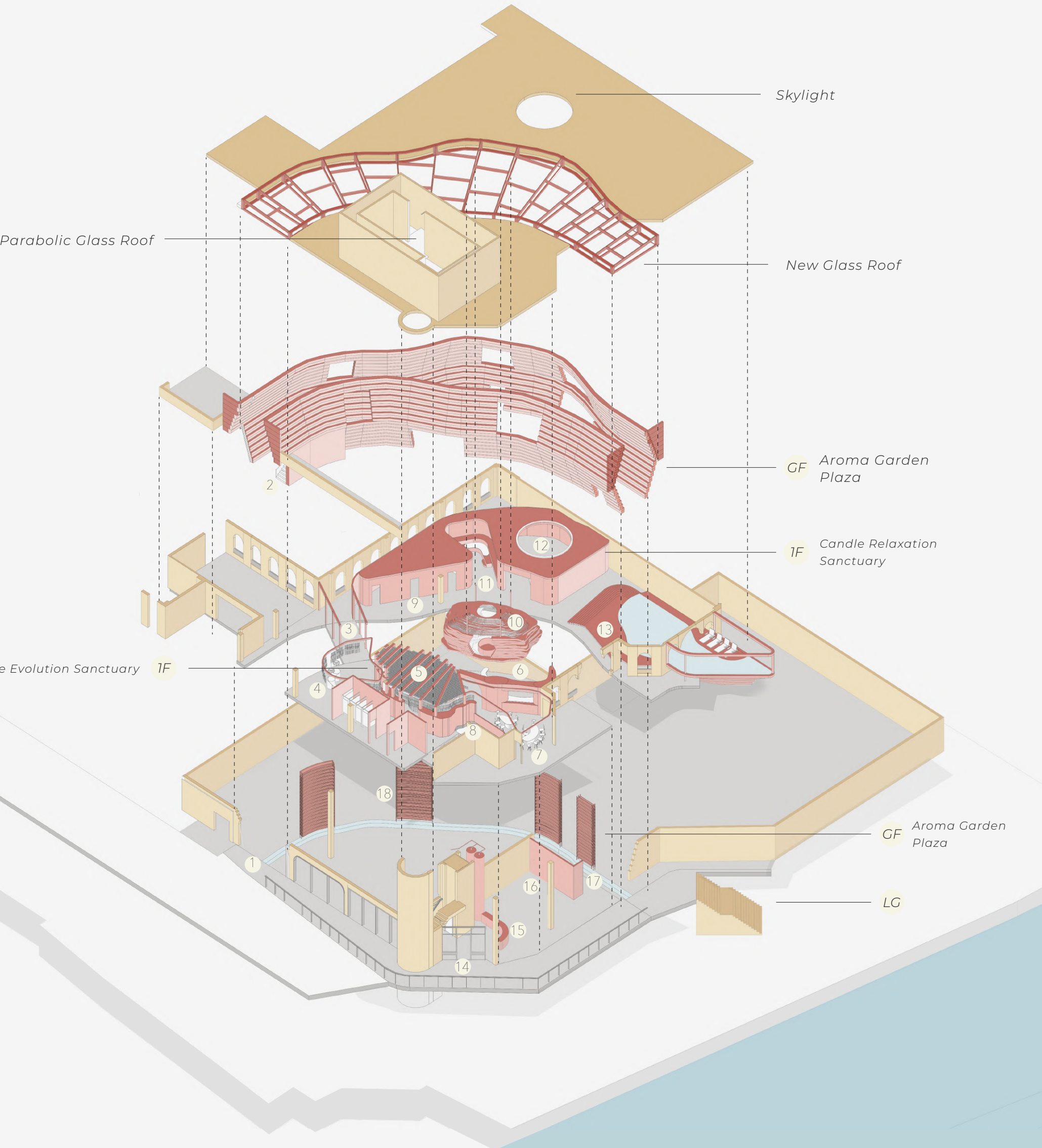
- 1 Aroma garden plaza entrance
- 2 Stairs to Main floor
- 3 Reception bridge
- 4 Traditional candle making sanctuary
- 5 Modern candle making sanctuary
- 6 Aromatic extraction lab
- 7 Community workshop
- 8 Filtration process gallery view

JOURNEY 2

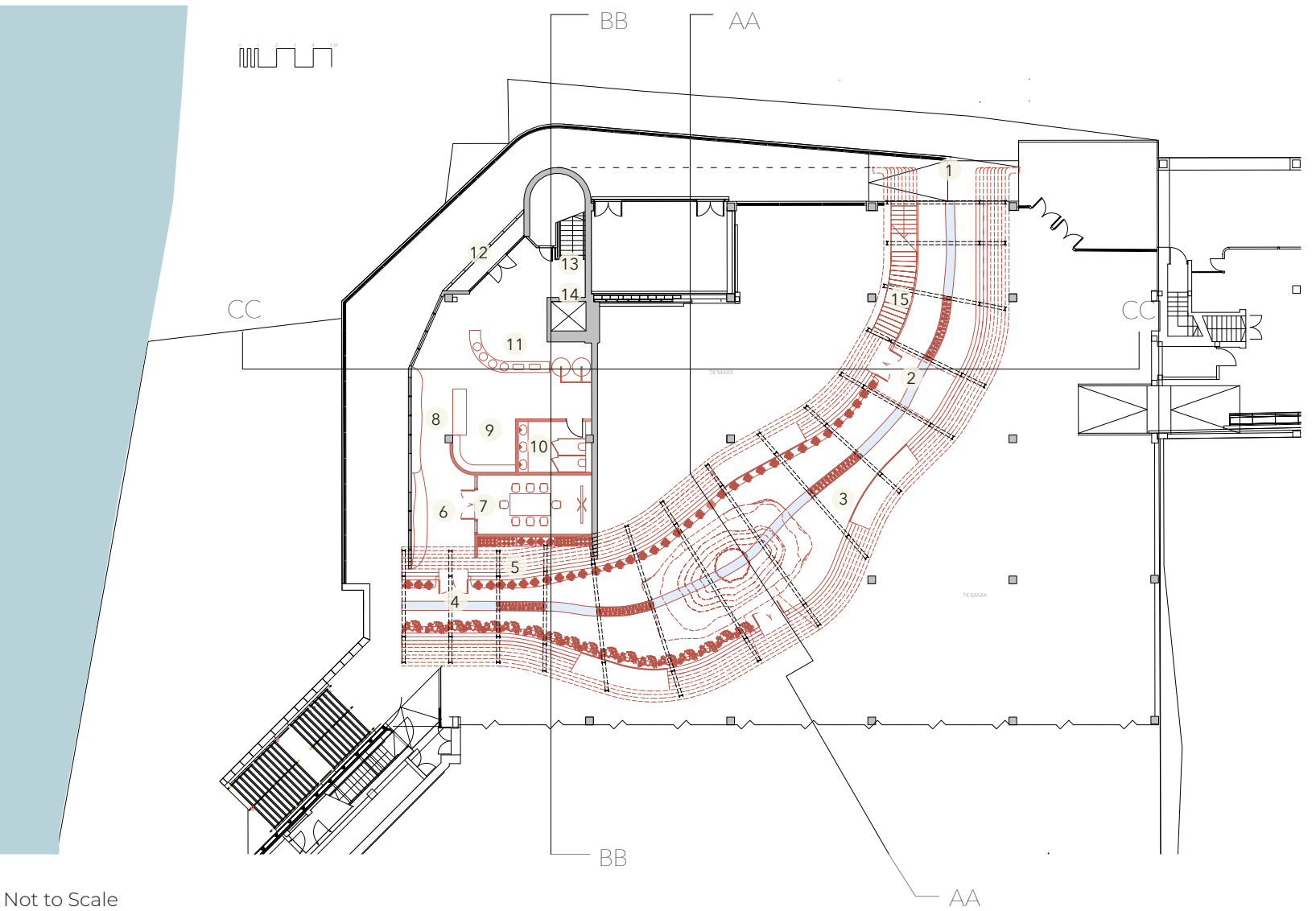
- 1 Aroma garden plaza entrance
- 2 Stairs to Main floor
- 3 Reception bridge
- 9 Changing rooms + WC
- 10 Candle contemplative chamber
- 11 Lounge area
- 12 Guided Meditation space
- 13 Relaxation Pool

JOURNEY 3

- 1 Aroma garden plaza entrance
- 14 Wheelchair lift access
- 15 Oil collection + filtration process
- 16 Backhouse
- 17 Temp-controlled plant storage
- 18 Aroma vertical garden



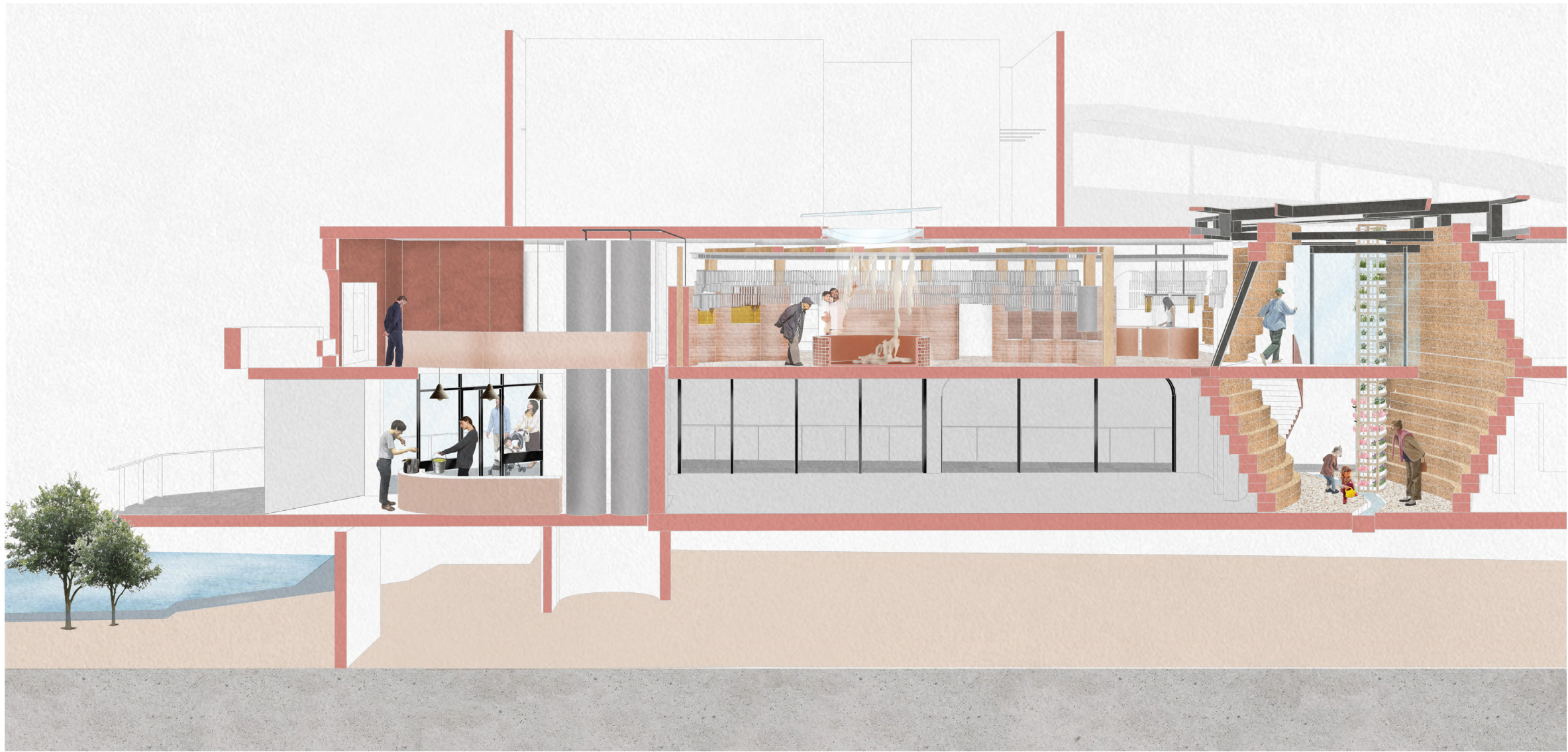
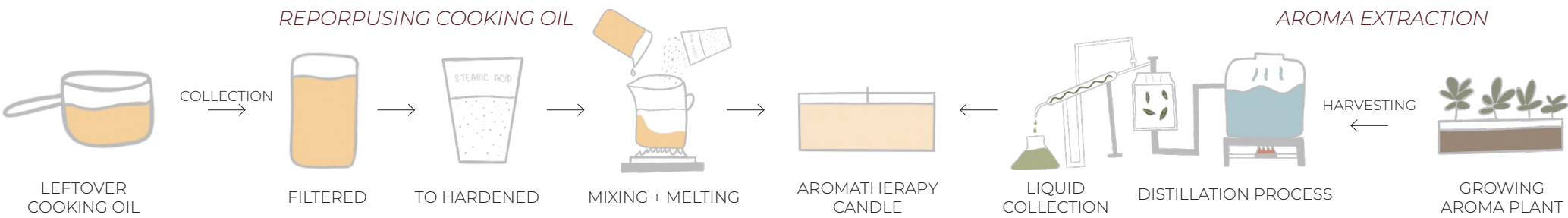
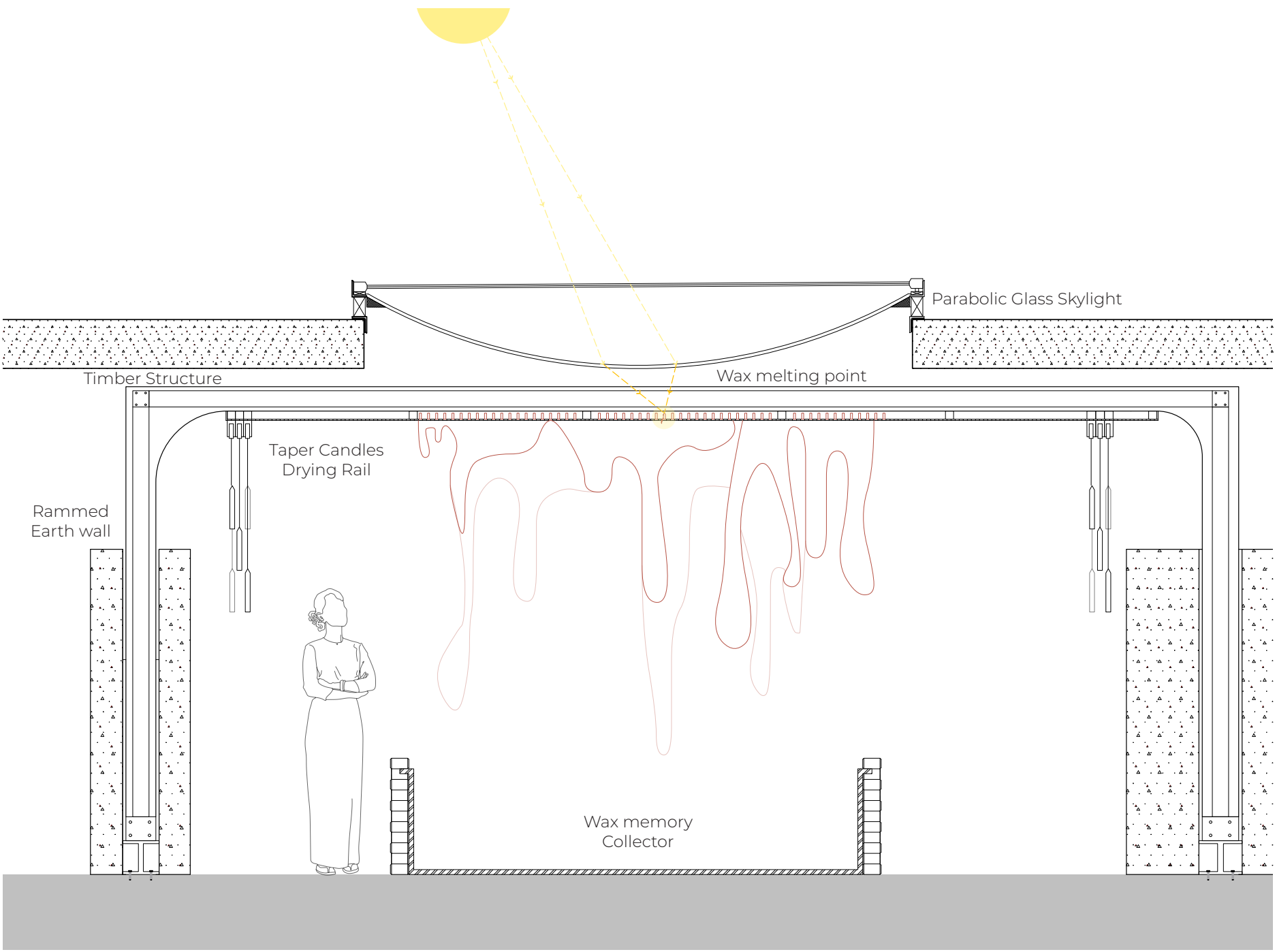
First Floor Plan
(Main Level)



Ground Floor Plan
(TK MAXX Level)

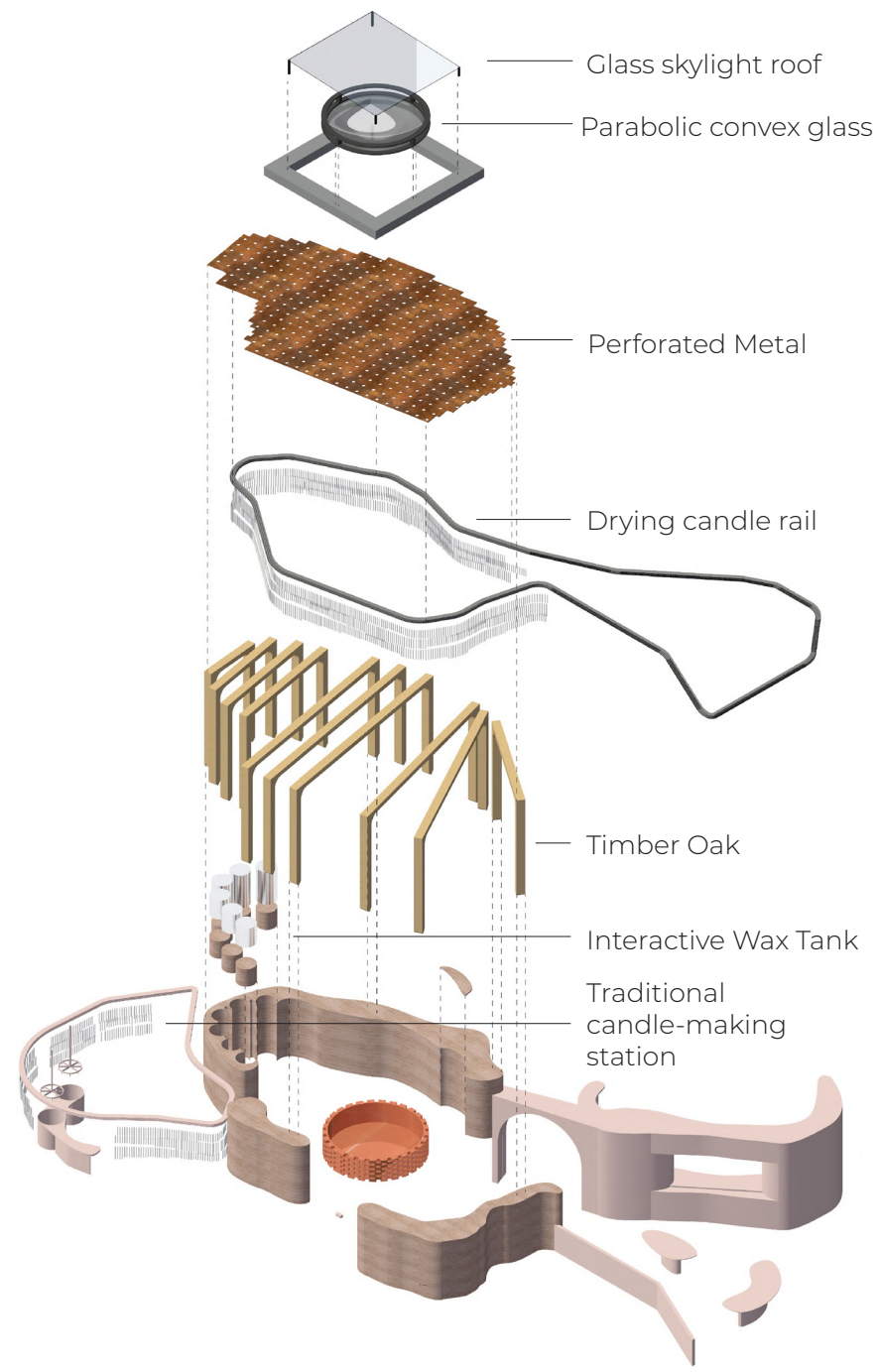


Where wax drips like memory, shaped by scent and time—
forming ever-changing sculptures each visits



Candle Evolution Journey

Community Workshop

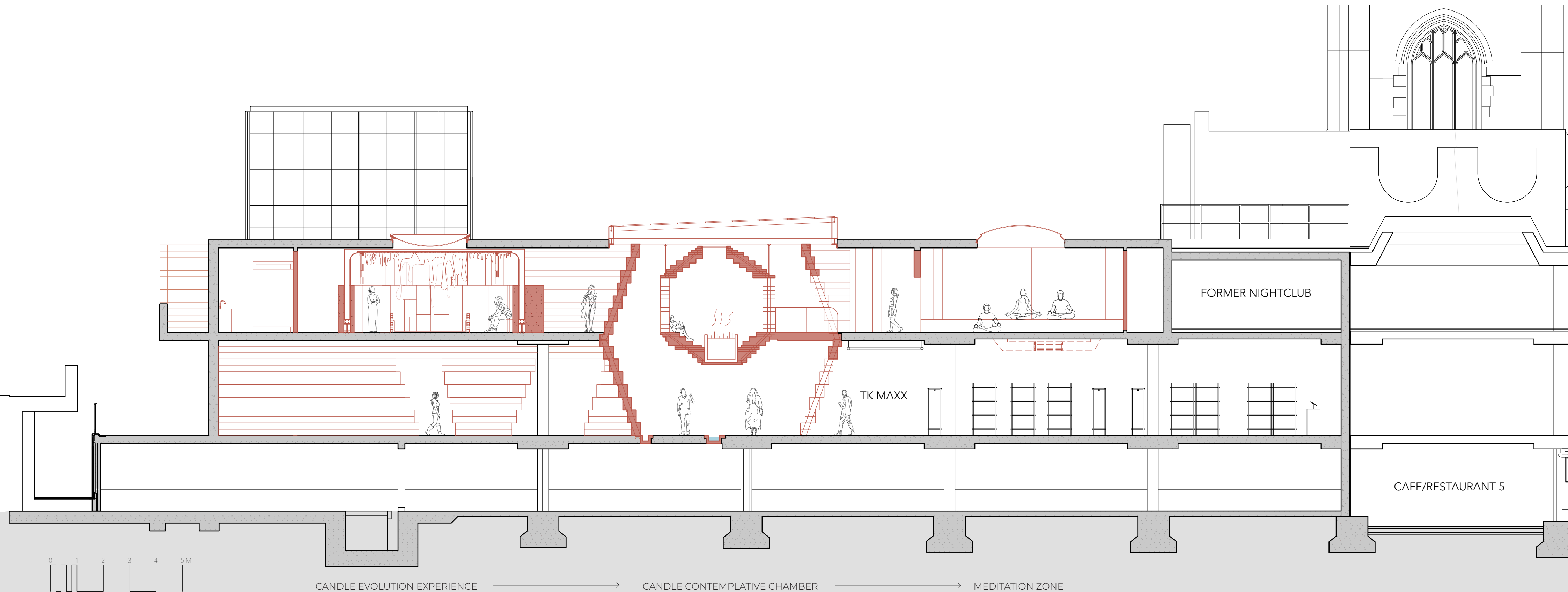


Material Palette



Vertical Aroma Garden Plaza

- 1 Oak Panelling
- 2 Steel beam
- 3 Glass
- 4 Aroma plants (Lavender, Hibiscus, etc)
- 5 Existing Concrete
- 6 Cork
- 7 Terrazzo



CANDLE EVOLUTION EXPERIENCE

CANDLE CONTEMPLATIVE CHAMBER

MEDITATION ZONE

FORMER NIGHTCLUB

TK MAXX

CAFE/RESTAURANT 5