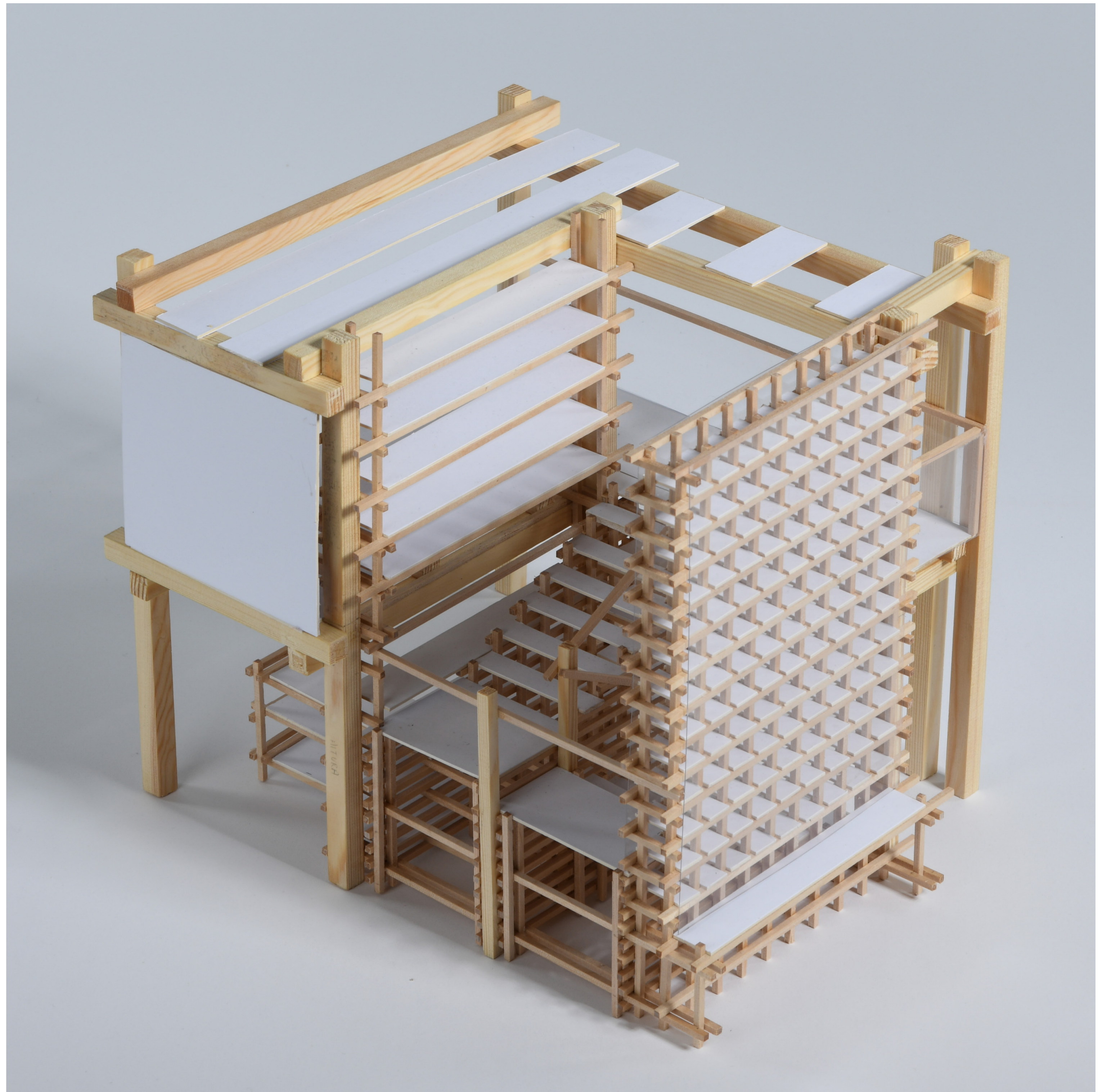
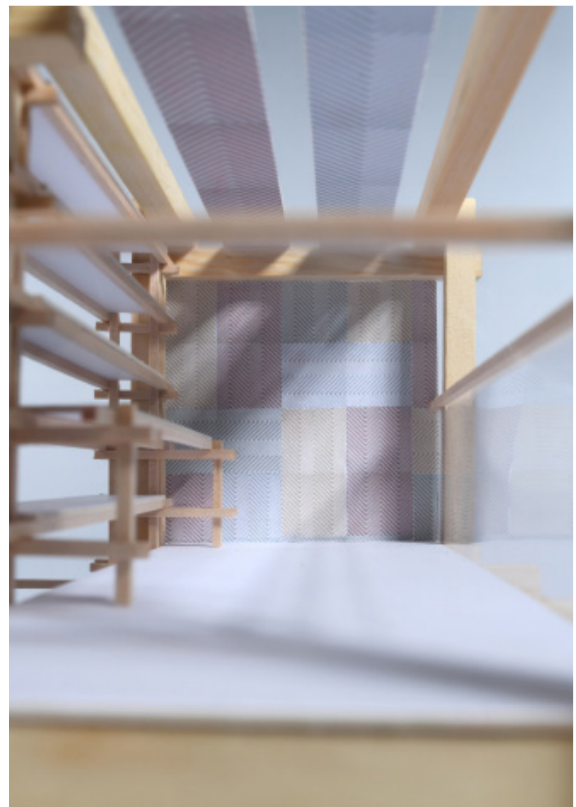


Highgate Society Biodiversity Centre

The Highgate Society Biodiversity Centre is an interactive and dynamic pop-up space where visitors can have a deeper connection with nature and ecology in various ways. It offers engaging activities such as a plant shop and a reference library filled with ecological resources. Additionally, there is a seed bank where people can participate by planting seeds and gaining knowledge in cultivation techniques.

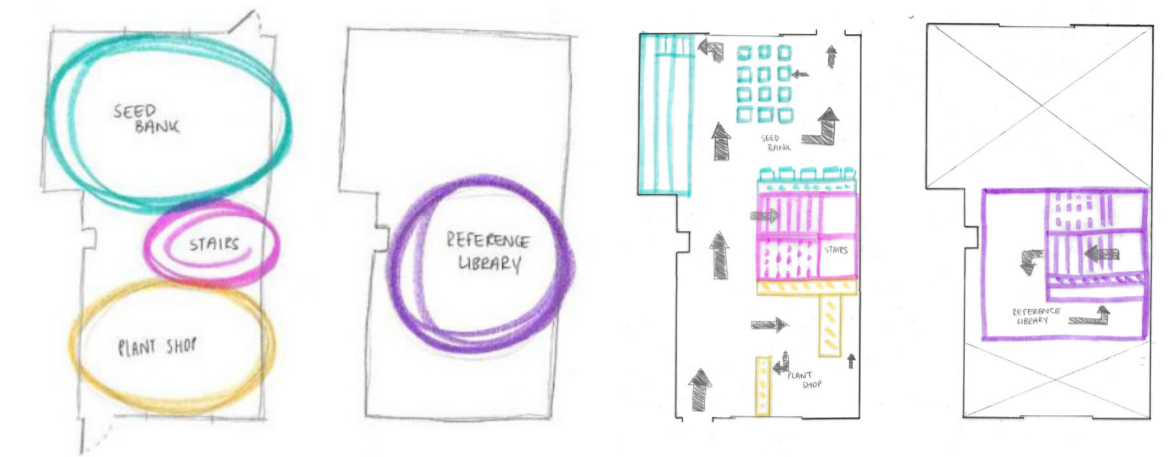
This center focuses on teaching and providing an opportunity for visitors to have a special experience where they can involve themselves in ecology in a practical and educational manner. These activities are suitable for all ages, practical, and easy to understand, contributing to effective teaching for the visitors' future.

Futhermore, this center includes a communal and social space where visitors can feel more confident interacting with each other. It can also work as a venue for informative conversations where visitors can share what they have learned through their time at the Centre. This is important for ecology to become meaningful in their lives and for these teachings to reach more people.

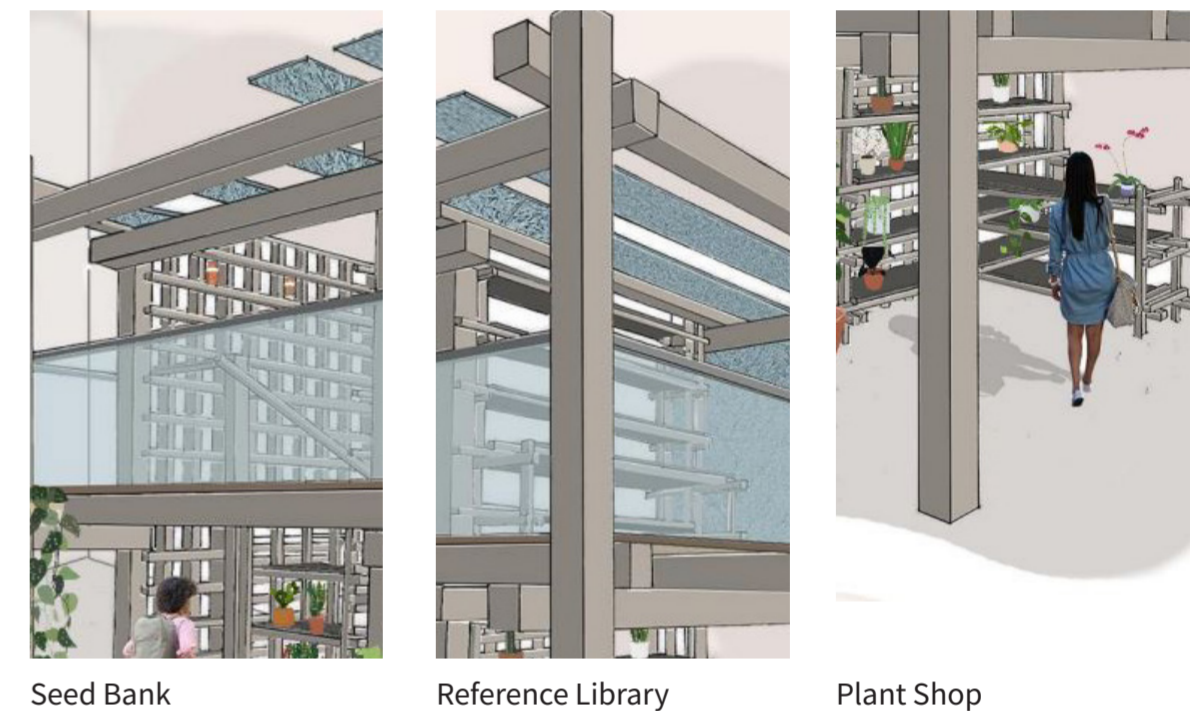


Highgate Society Biodiversity Centre

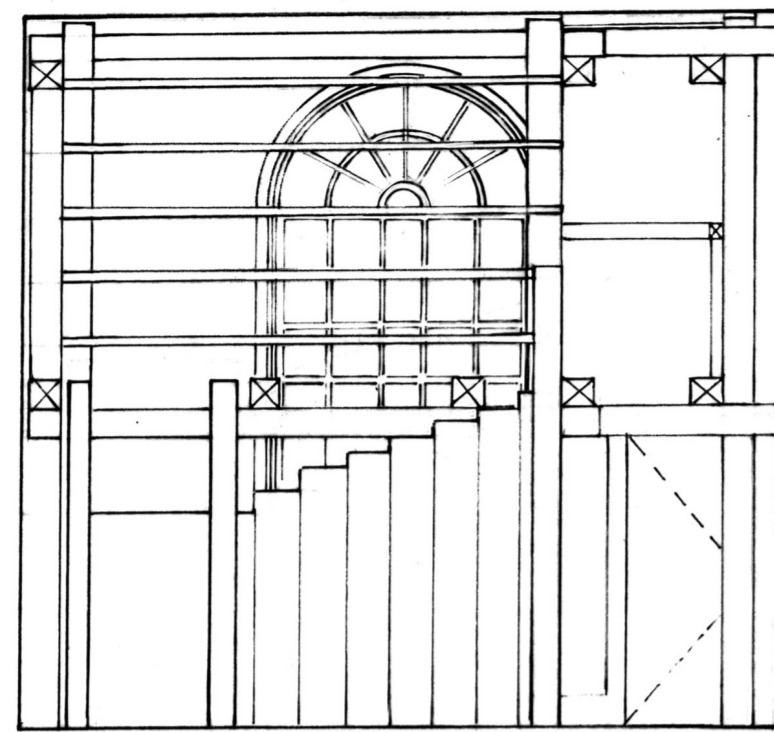
In this project, I went through many stages. I started by drawing small sketches to understand the existing building and determine the best way to guide visitors through the space and effectively position my ecological activities so visitors could easily understand what I wanted to demonstrate and teach.



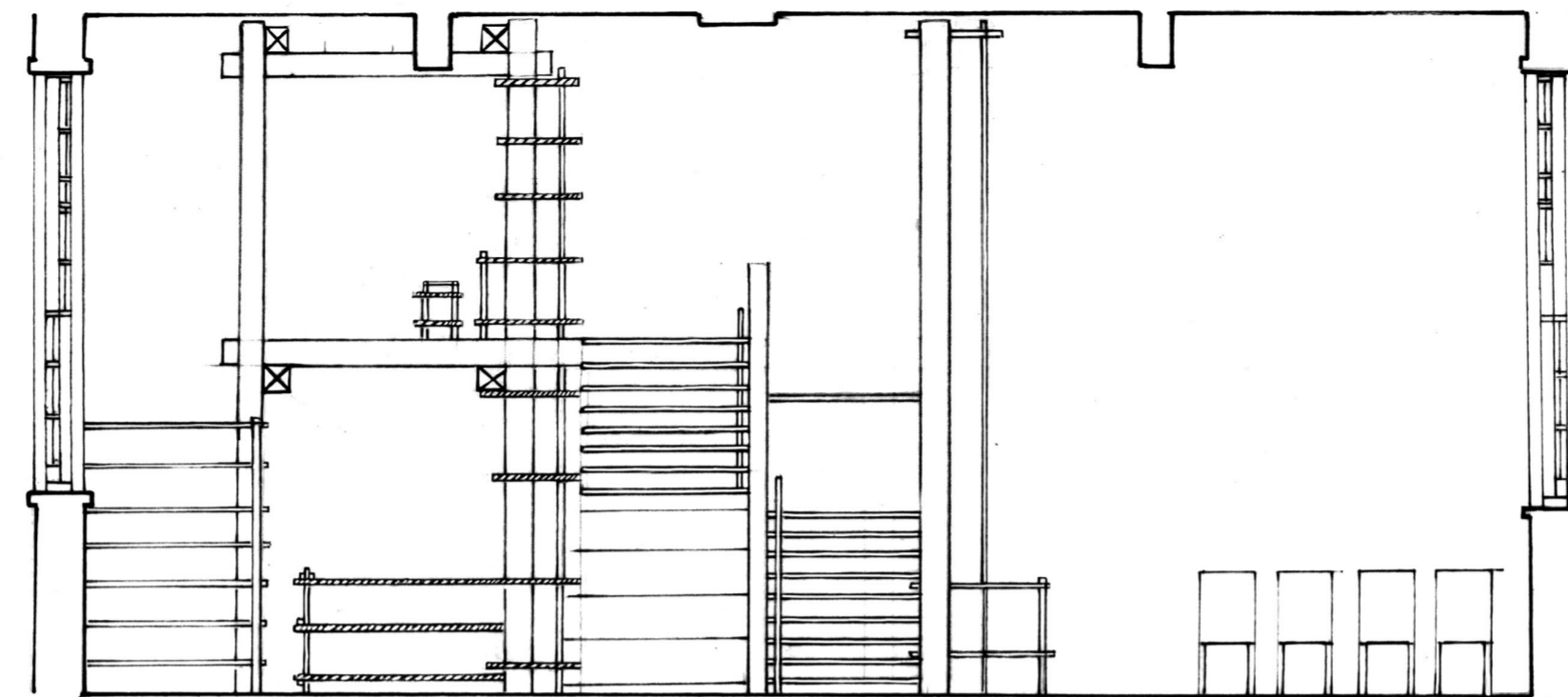
I incorporated a material called Baux Pulp, which is made from natural and recyclable materials, making it biodegradable. This material includes components like citrus fruits, cellulose, water, wheat, potato starch, and wax. The reason behind the use of these particular materials being its sound-absorbent ability, it is lightweight and fire retardant. I used it in the ceiling of my reference library, so my visitors feel less noises and makes the space feel cozy.



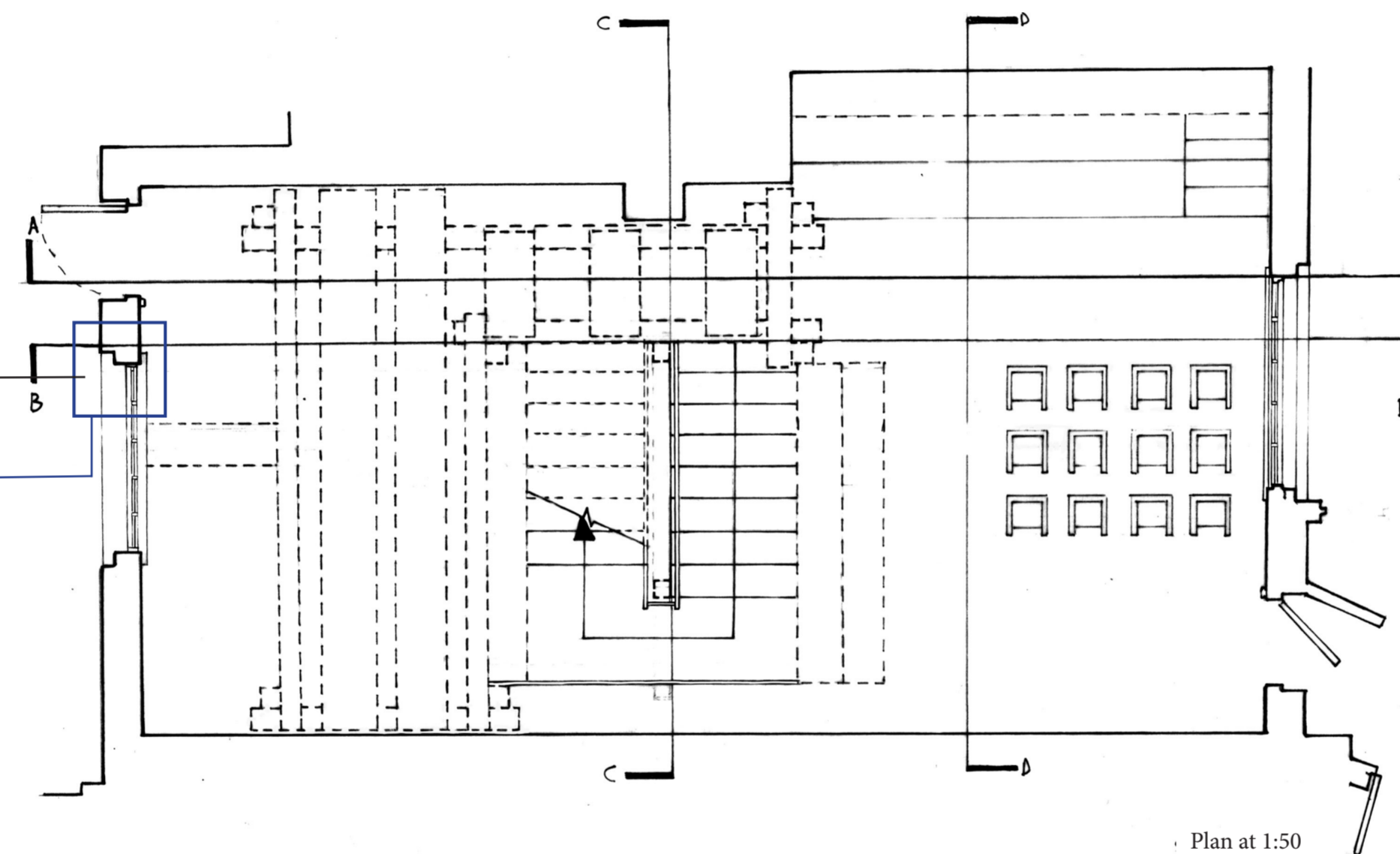
Seed Bank Reference Library Plant Shop



Side Elevation at 1:50



Front Elevation at 1:50



Plan at 1:50

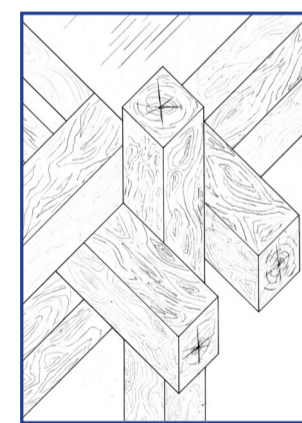
Next, I completed my orthographic drawing at a scale of 1:50, incorporating my ecological activities in the plan, front elevation, and side elevation. The pop-up I designed begins with a plant shop, so when visitors enter, they feel they are stepping into a refreshing and ecological space. From there, they can take the stairs to the upper floor, where they have the option to visit a small library with books about ecology, or continue straight ahead to the seed bank and the communal area. In the seed bank, each shelf is designed to hold jars with seeds.

Highgate is a residential neighborhood located in North London. Highgate offers residents primary schools, a main local high street, businesses, and wide green spaces. The Highgate Society is an organization which launch a wide range of events and provides public benefits by making positive changes to the neighborhood. It has 1,250 members.

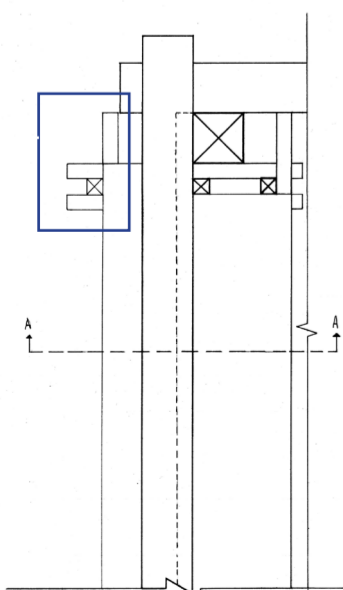


Highgate Society

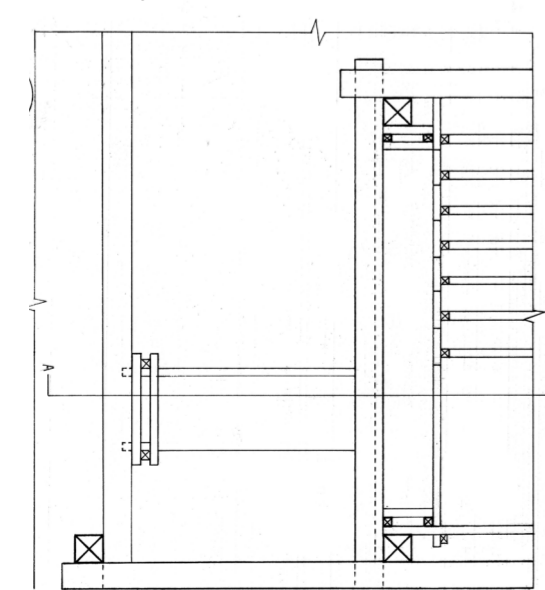
Axonometric at 1:2



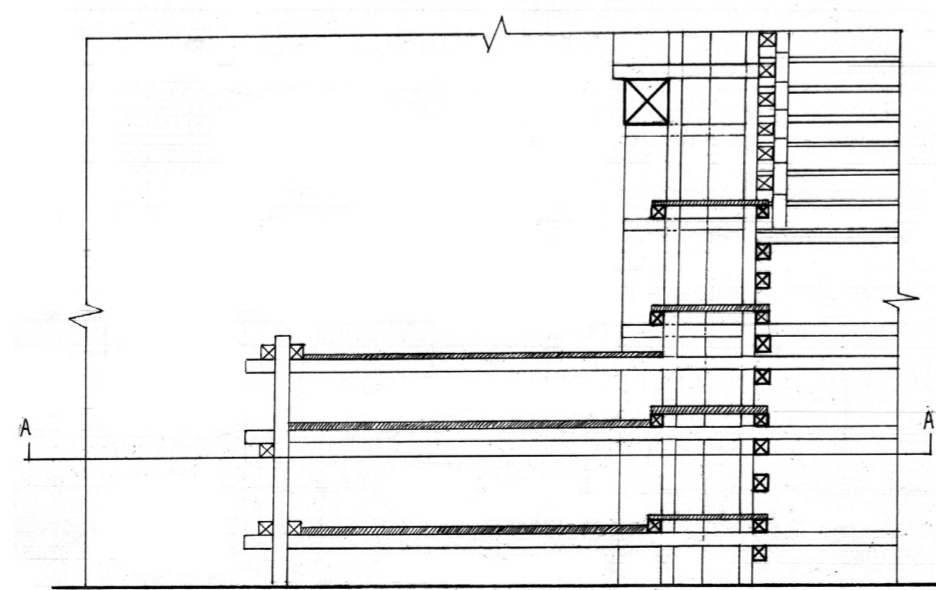
Library- Plan at 1:10



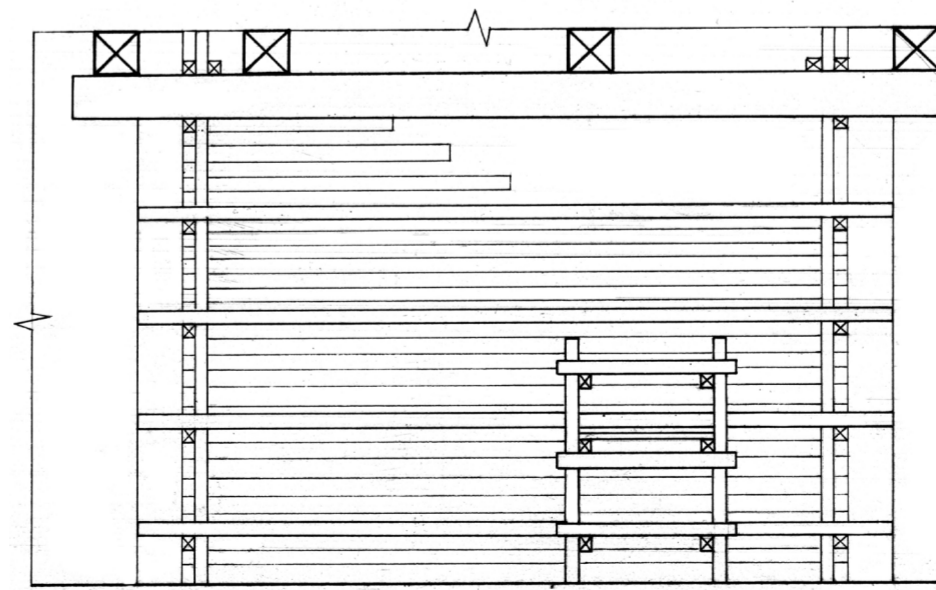
Plant Shop- Plan at 1:20



Plant Shop- Section at 1:20



Plant Shop- Front Elevation at 1:20



I made the drawings by learning how to do them step by step, using a crafty method. Through this process I involved learning different crafting techniques and methods. This helped me to understand and improve my orthographic drawings which I got knowledge to refine my main ideas.

I created a model making using sticks ranging from 3mm to 10mm. In this model, everything is interconnected: the stairs are joined to both the seed bank and the plant shop. Also, all shelves are linked to the main columns. To join the sticks, I utilized a technique known as the Rietveld Junction.

