

Vessels of Clarity

From raw earth to rainwater and fire, this project traces the emotional journey of healing through the craft of ceramics. Each space mirrors a stage of transformation—tactile, elemental, and personal—guiding users through light, material, and memory toward reflection. A ritual of making becomes a ritual of becoming.



GROUNDING
&
TACTILE

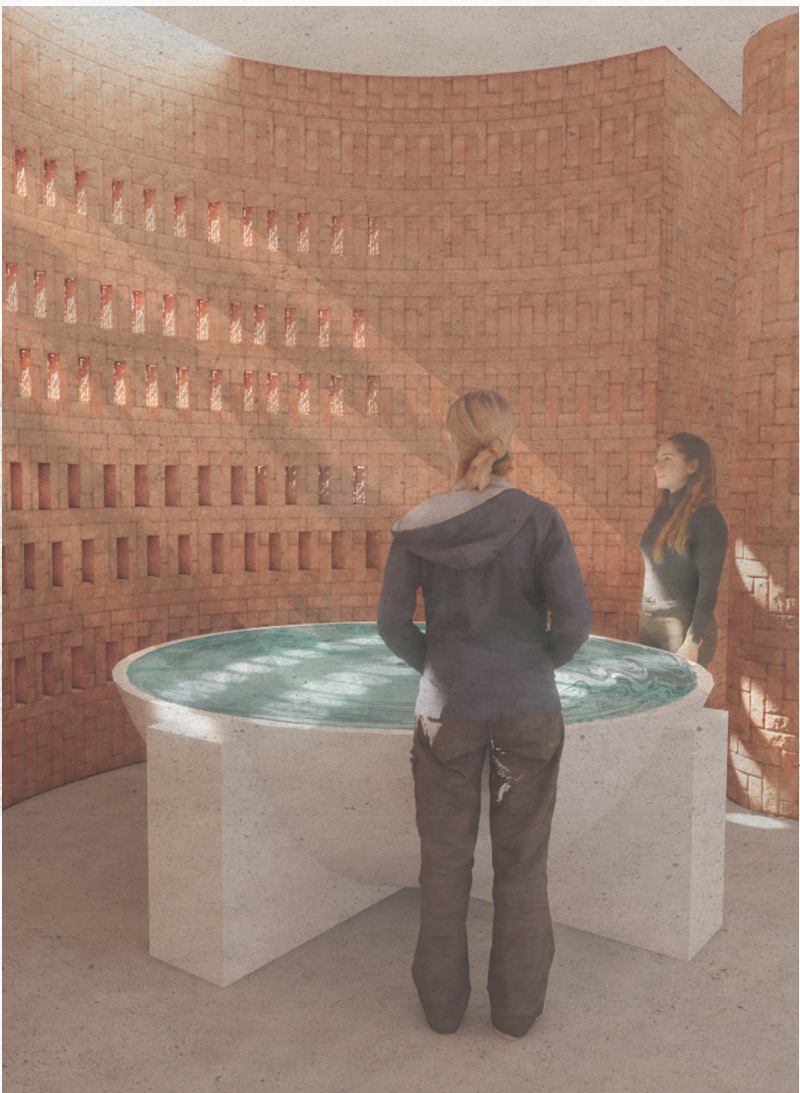
Awarness-Reflection &
Discovery Room

1.

Clay Preapartrtion and
Grounded Area

Preparation

To begin the process PHYSICALLY &
EMOTIONALLY by connecting with
raw materials (clay, water, earth)

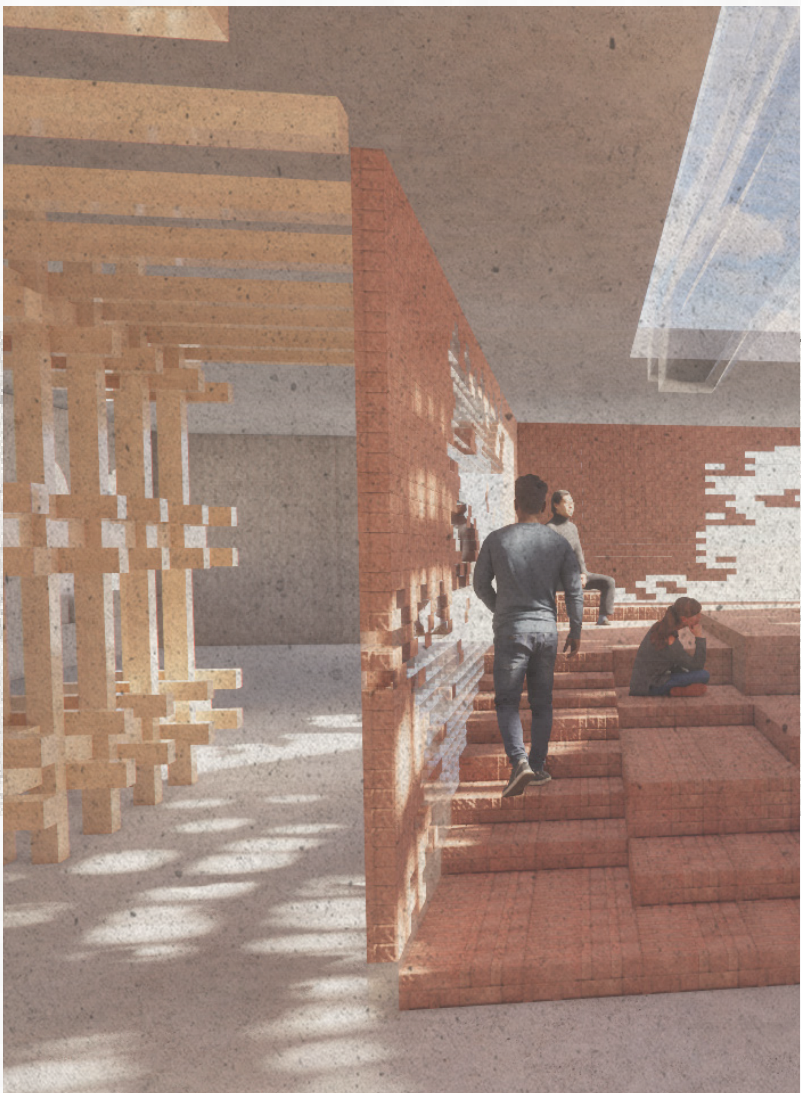


IMMERSIVE
&
MEDITATIVE

Understanding-
Learning Spaces
2.
Wheel-Throwing &
Hand-Builing Station

Forming

A focused workspace for creative
expression, self exploration & ve-
motional Porcessing through clay

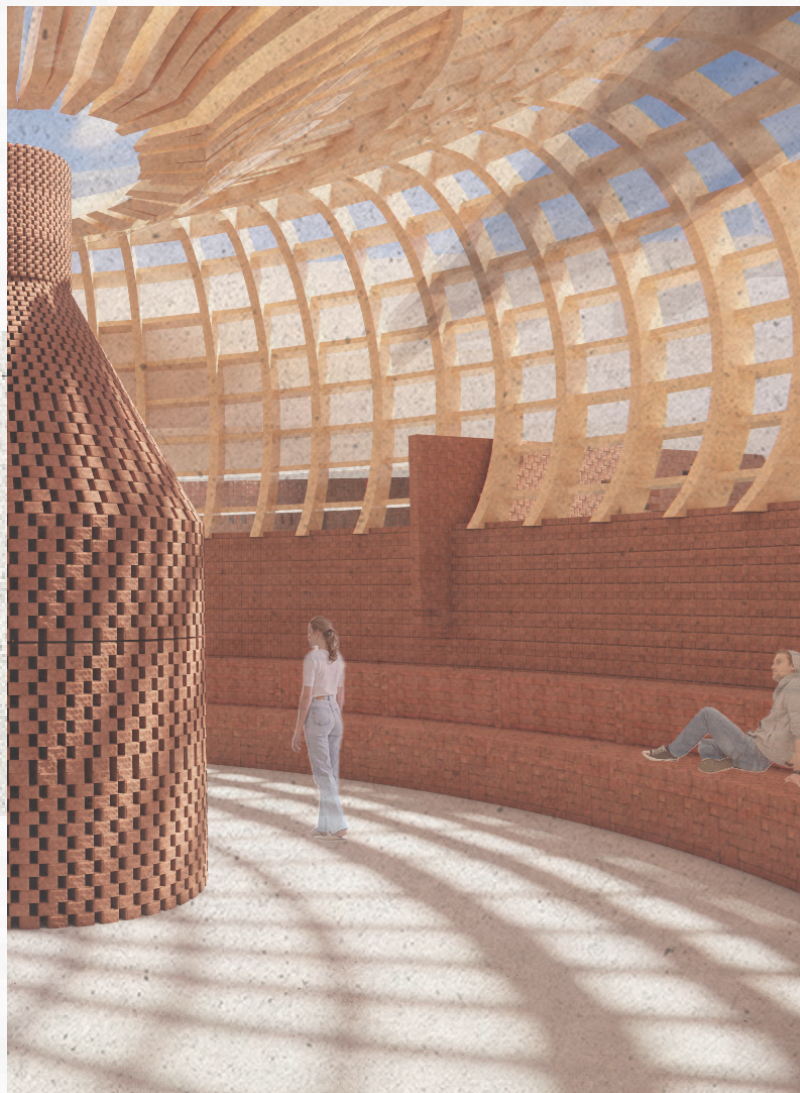


SILENT
&
CONTEMPLATING

Processing -Expressive
Therapy Room
3.
Drying & Reflection
Space

Drying

A quiet introspective space where
ceramics air dried, mirroring the metal
healing process of waiting & allowing
change

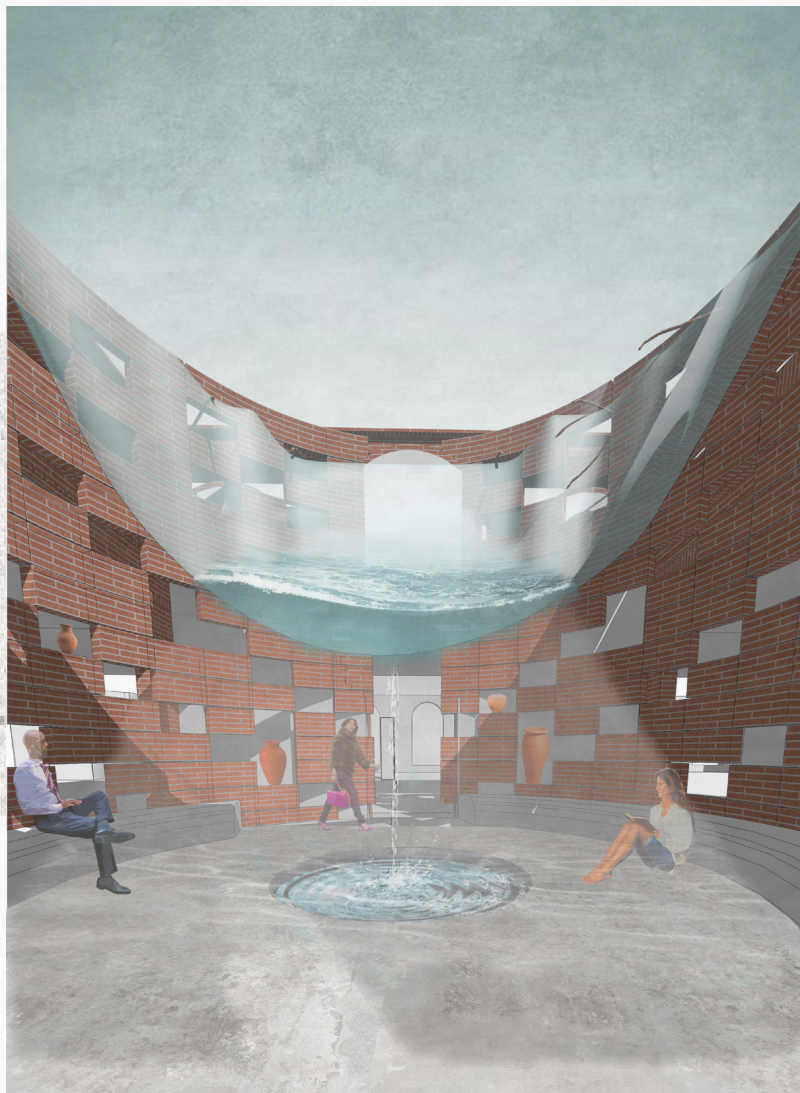


WARM
&
SYMBOLIC

Rebuilding - Self Care &
Integration Room
4.
Kiln Room & Transfor-
mation Space

Firing

The high-energy process of firing ce-
ramics symbolises transformation
through struggle & heat

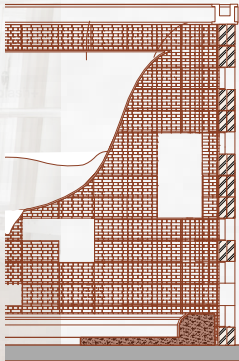


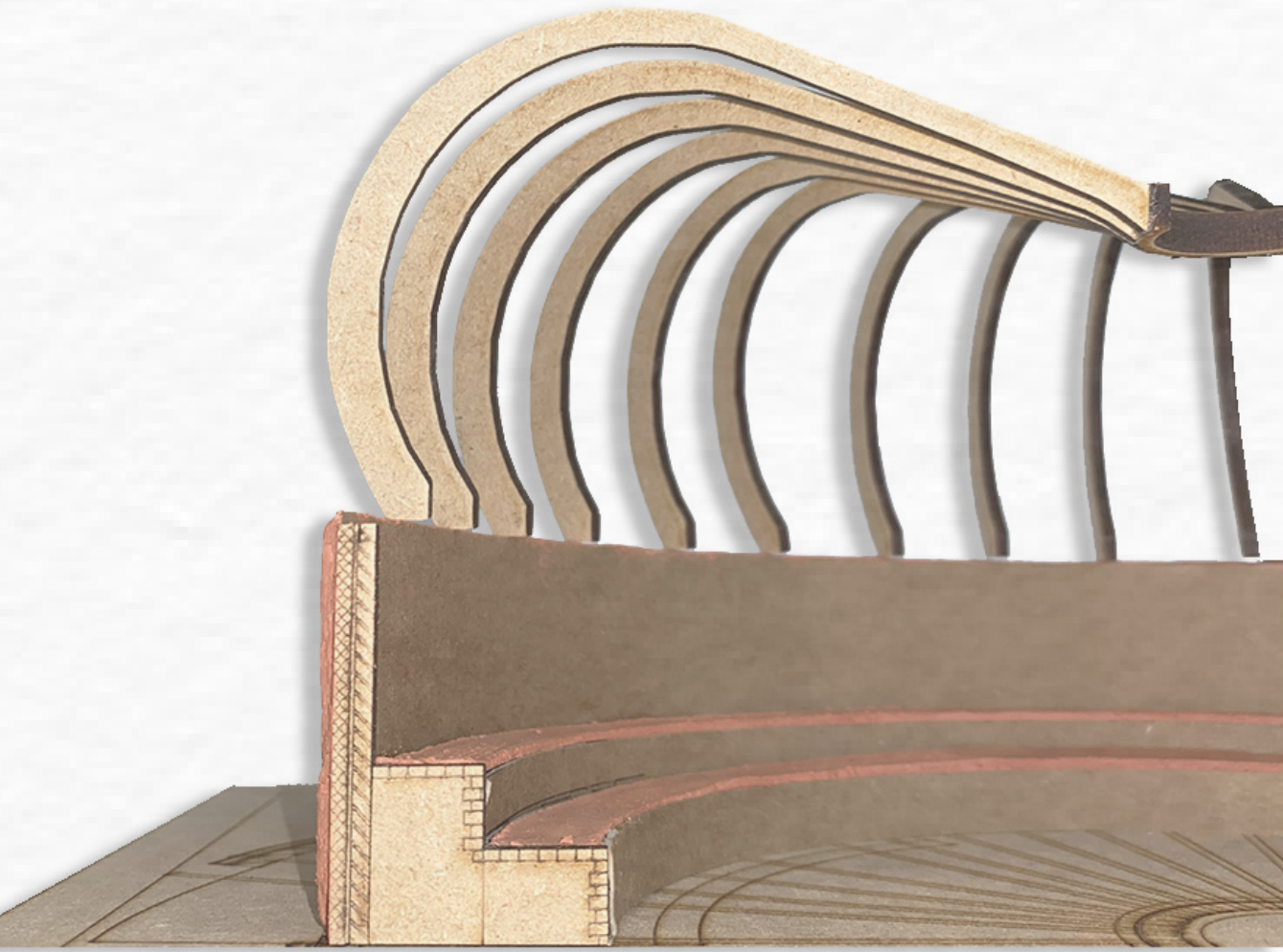
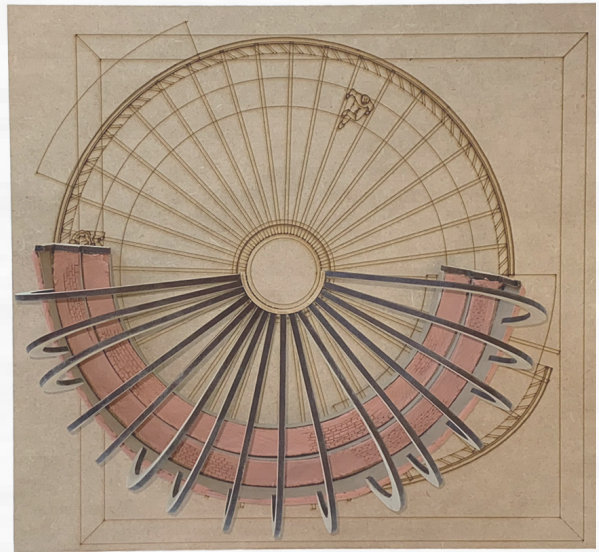
CELEBRATORY
&
EMPOWERING

Growth & Acceptance -
Empowerment Hub
5.
Final Showcase

Completion

A welcoming area for sharing con-
nection and embracing imperfec-
tions



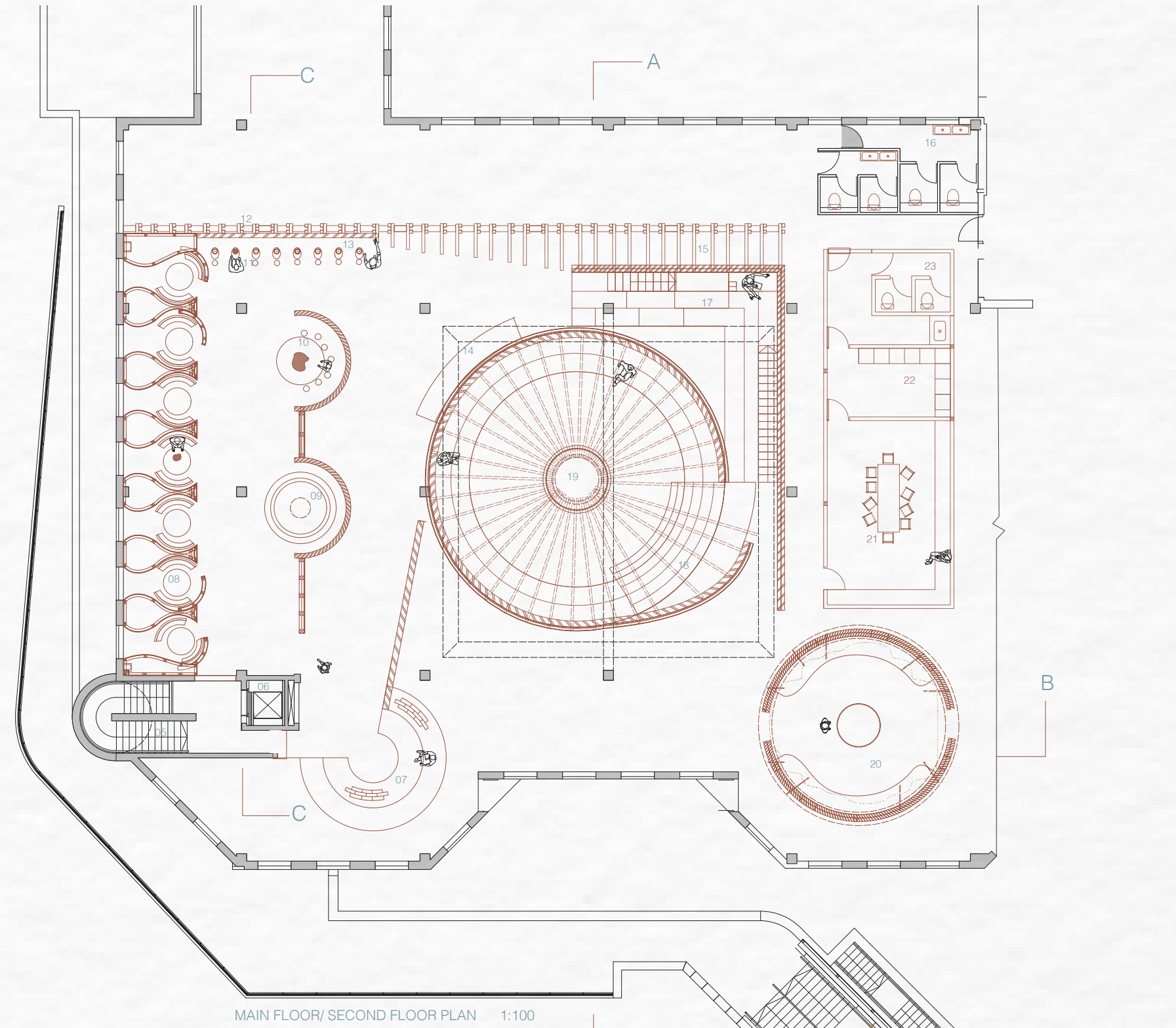


SECTIONAL MODEL

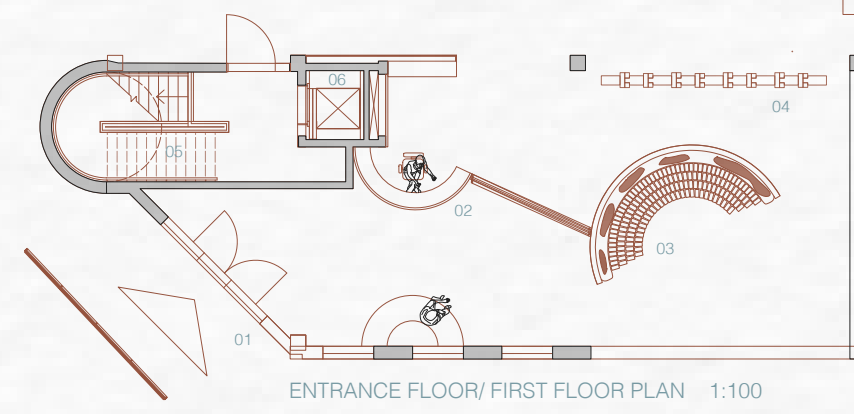
- 01 Entrance
- 02 Reception
- 03 Grounding Area
- 04 Cloakroom/ Shelves
- 05 Main staircase
- 06 Lift
- 07 Seating Area
- 08 Private Hand building space
- 09 Sink
- 10 Public Hand building space
- 11 Wheel throwing
- 12 Built up brick wall
- 13 Built up brick wall
- 14 Bench
- 15 Shelving + Drying connective space
- 16 WCs
- 17 Elevated drying space
- 18 Firing Area / Transformation
- 19 Kiln
- 20 Empowerment Hub
- 21 Staff canteen
- 22 Staff lockers
- 23 Staff WCs

B

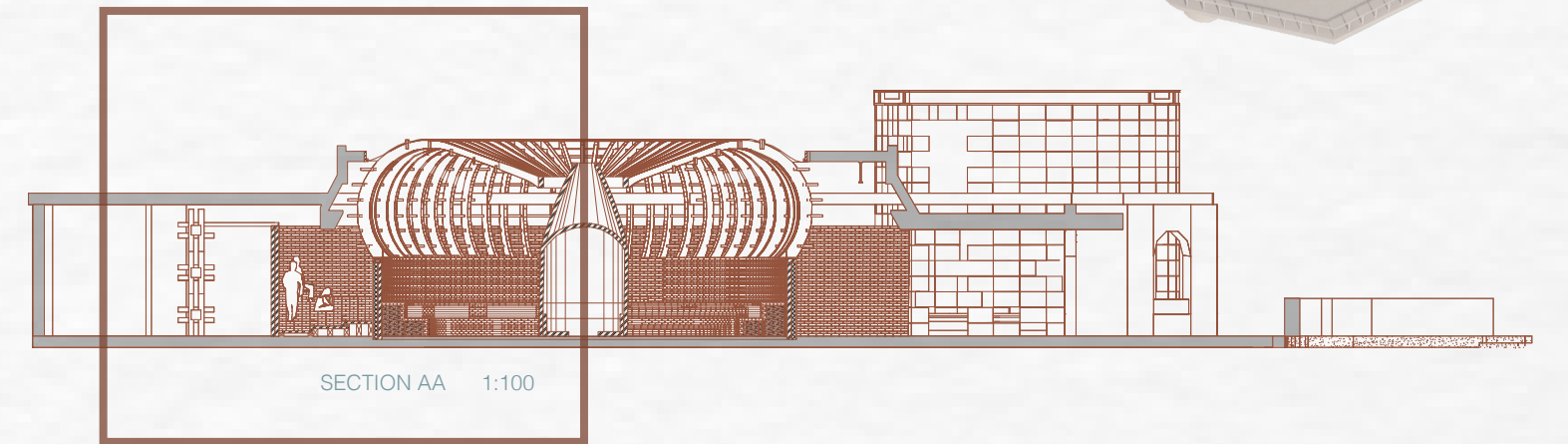
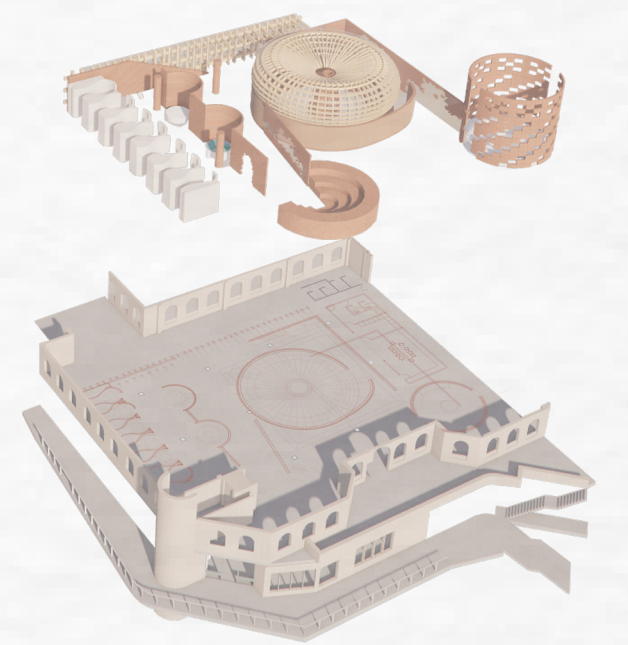
B



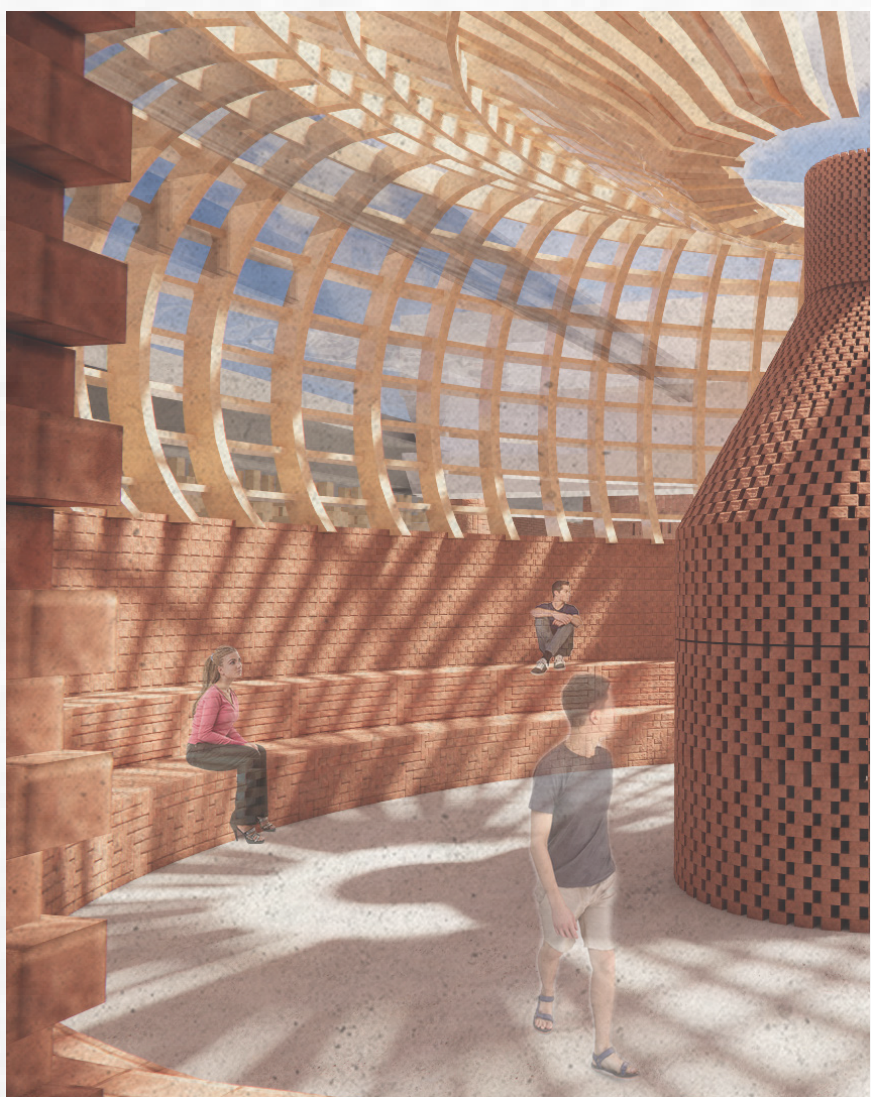
MAIN FLOOR/ SECOND FLOOR PLAN 1:100



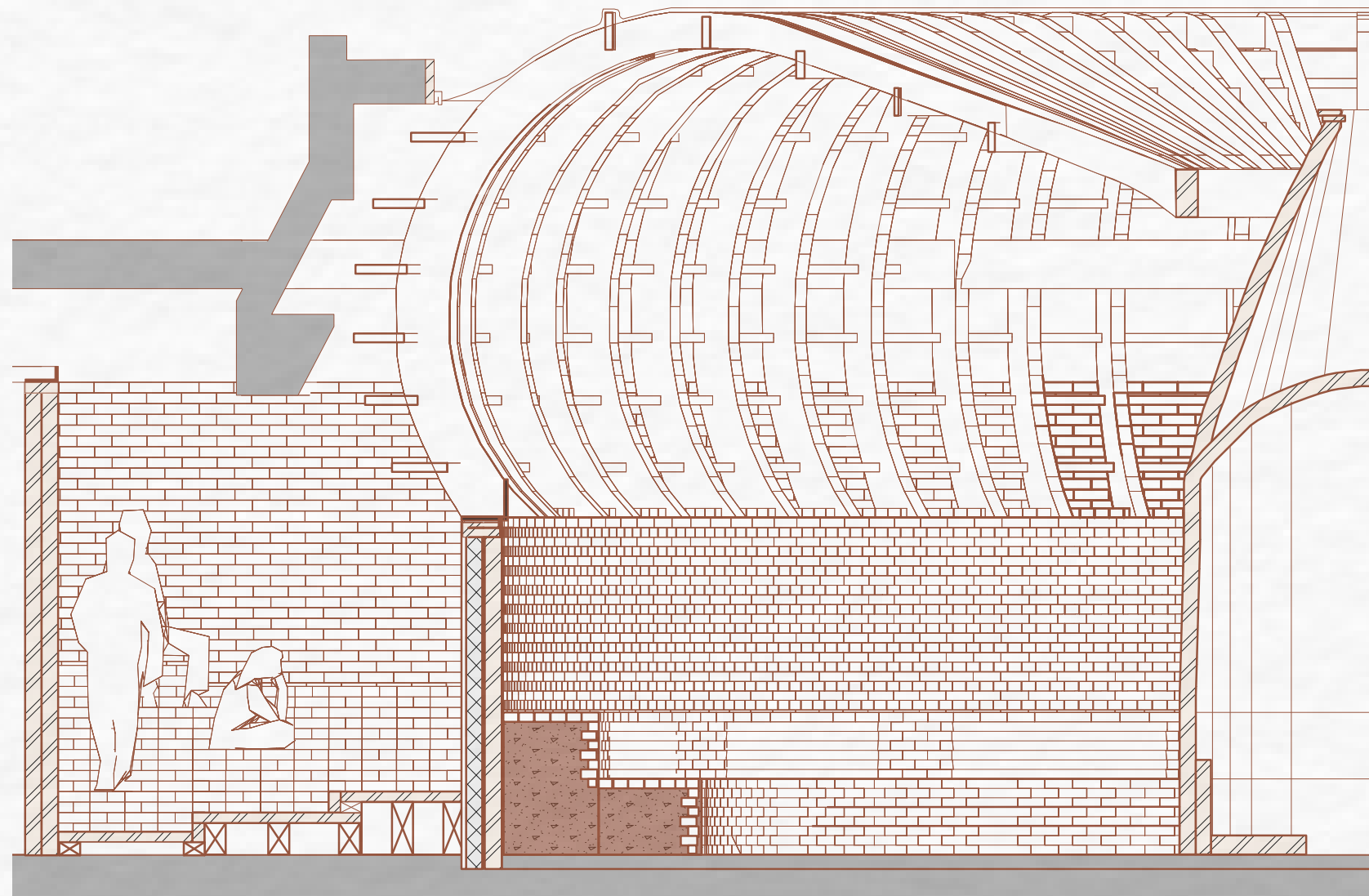
ENTRANCE FLOOR/ FIRST FLOOR PLAN 1:100



SECTION AA 1:100



VISUAL SECTION AA



DETAIL SECTION AA