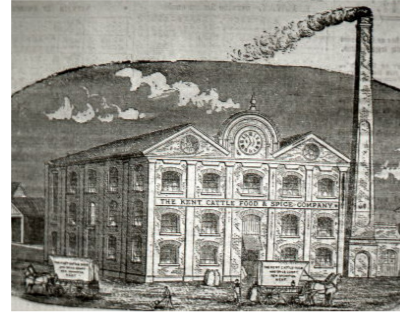


CHATHAM BUBBLE

FROM ROPE TO SOAP

The project rebrands Chatham's historic dockyard into a soap factory, bath and handmade soap retail area. Inspired by its rope-making history, the building will serve as a sustainable soap production centre and interactive community hub, promoting circular economy principles and climate awareness. Rebranded as 'Chatham Bubble', the project aims to unite locals and visitors through soap making and inclusive bath experiences, fostering resilience and promoting mental well-being.



ROPE

+

HEMP

+

SOAP MAKING

+

SOUVENIR

+

DEVICE

+

LOCAL NEEDS

The history of rope-making in the dockyard ropery continues

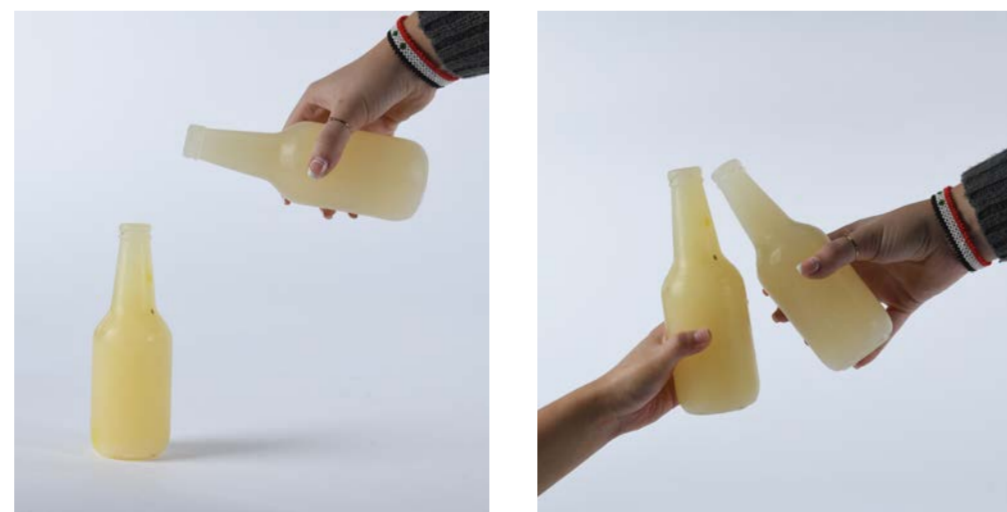
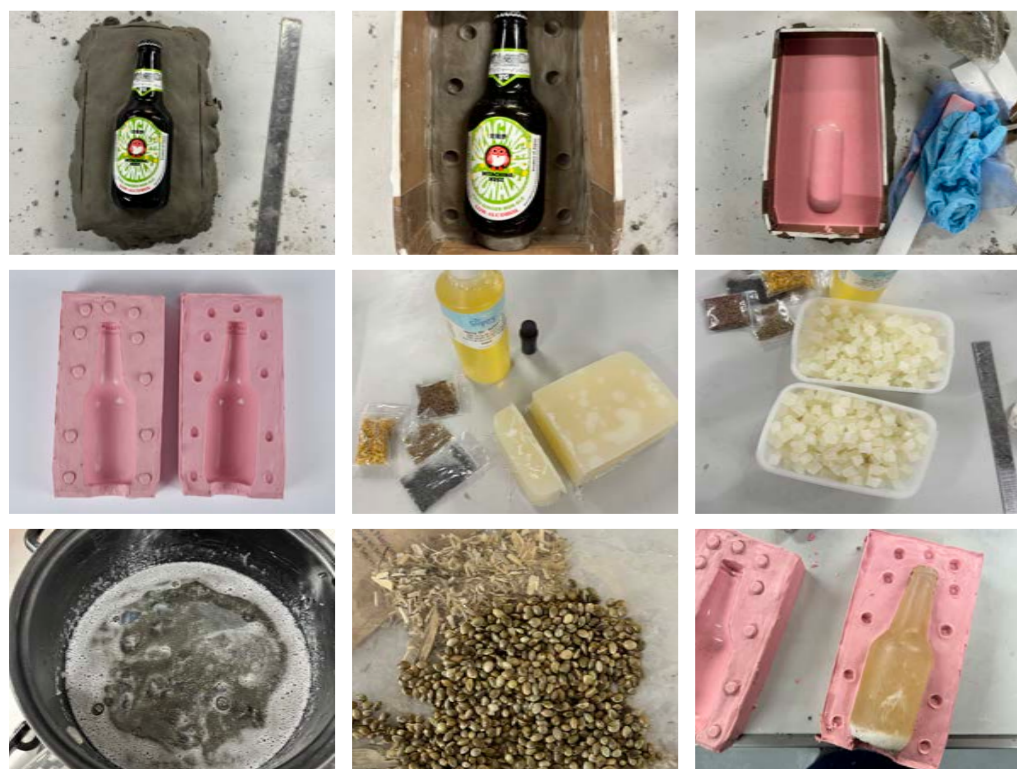
Rope making material THC strain of Cannabis is a drug. Hemp is a versatile material

The soap making history near the oil mill in Rochester

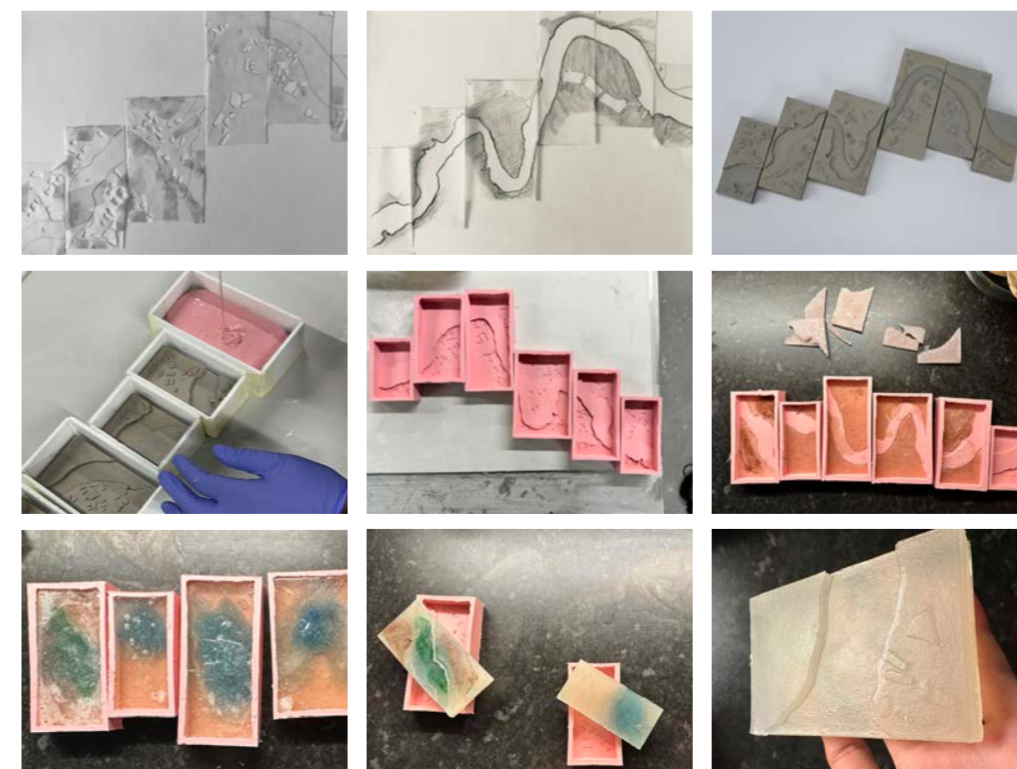
Past, Present and Future of Chatham, Local alcohol and drug abuse issues

The River Topographic Soap Erosion : Circulation + Climate Awareness

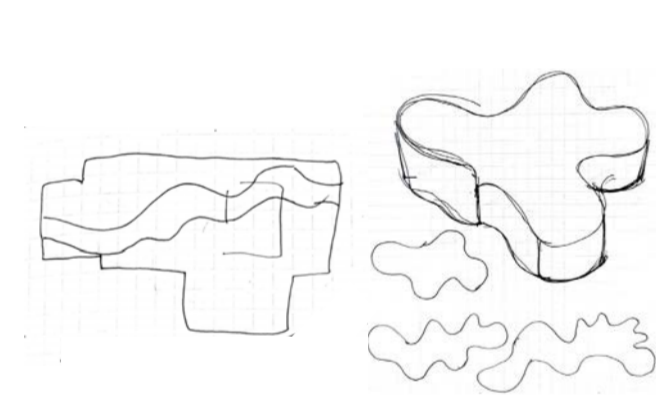
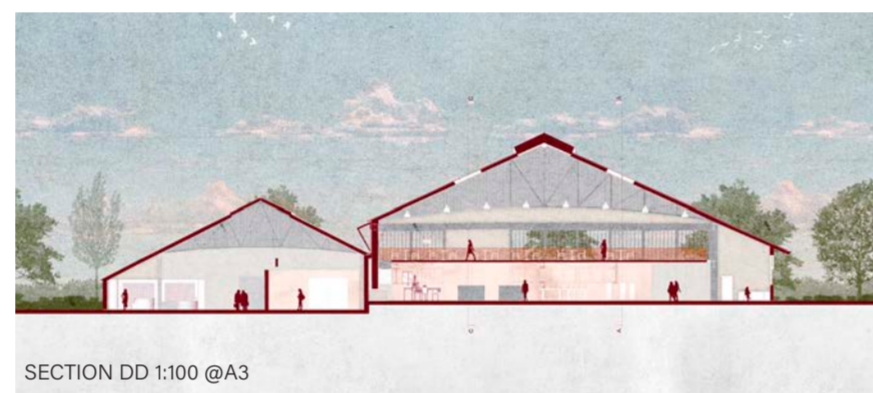
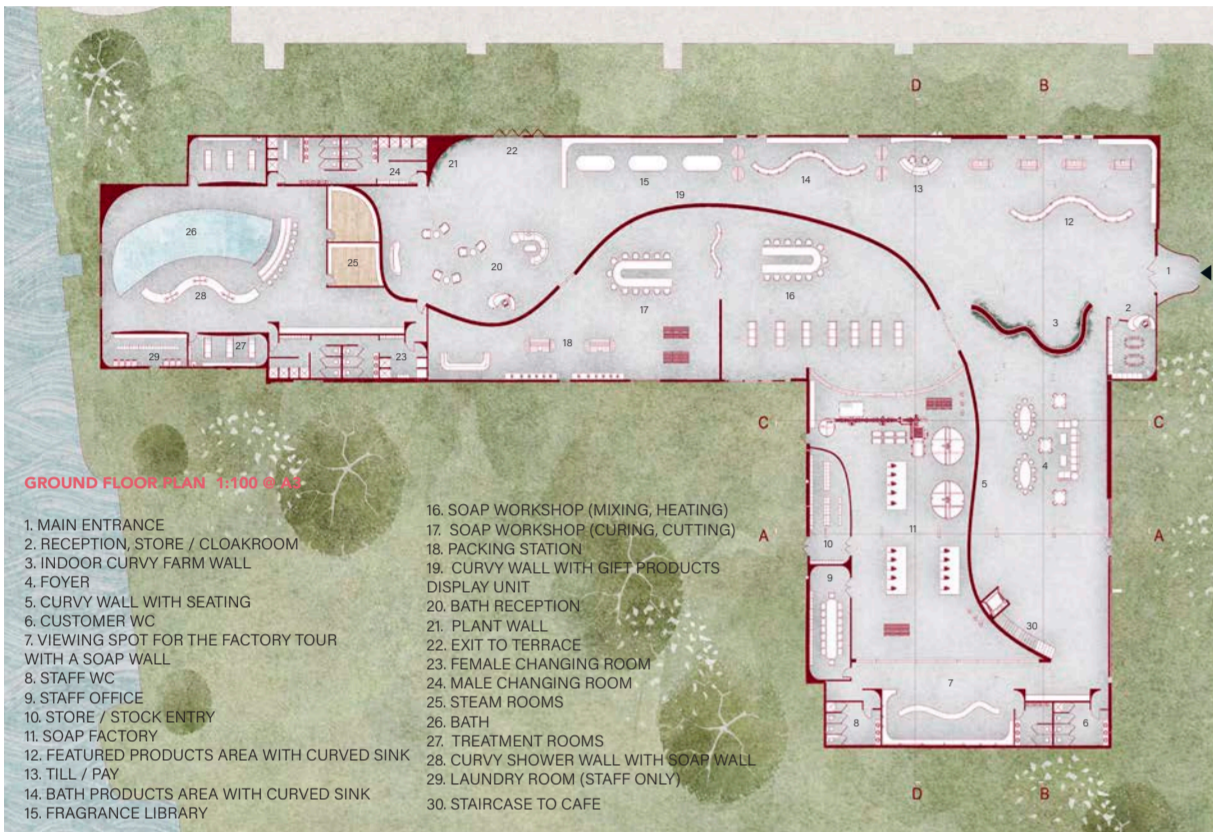
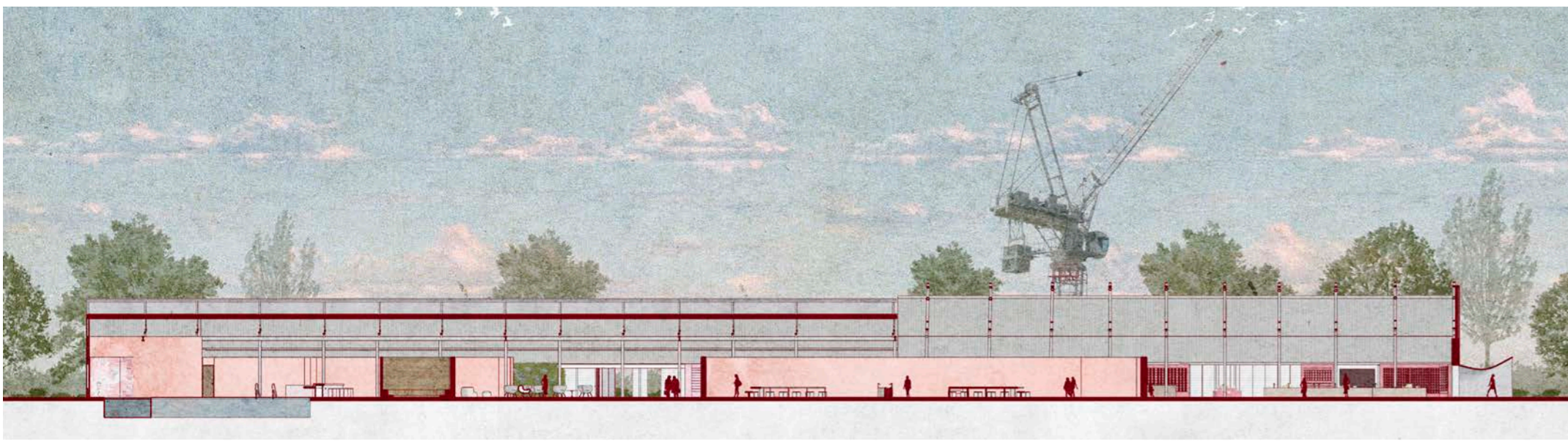
The absence of wellness and community gathering spaces



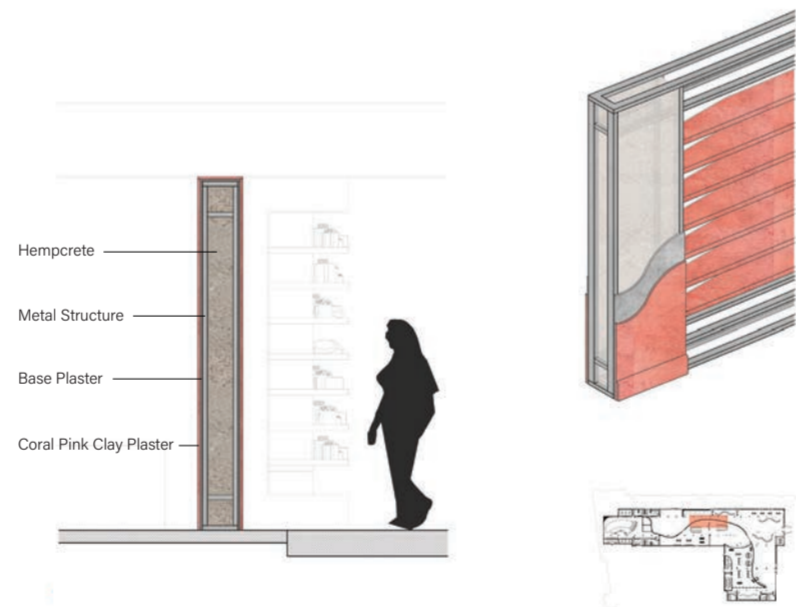
Souvenir : Smash Free Bottle Soap
 Inspired by the dockyard's rope-making history, with hemp as the primary material, a soap shaped like a beer bottle symbolises the drug and alcohol abuses in Chatham. Hemp represents Chatham's past, present and future - from rope making in the dockyard to potential new uses. The soap sparks curiosity about its appearance. It not only responds to the site but is also sustainable and skin-friendly due to its richness, enhancing the bathing experience.



Device : This Will Be Gone by 2050
 The original concept of the device for the site is to analyse the buildings' circulation and understand potential visitors' demographics. It enhances the link between the souvenir and the design scheme by using layered river topographic soap. Its erosion serves as a metaphor for environmental changes due to rising sea levels. The soap's wear patterns could indirectly reveal the buildings' circulation and usage. It reframes people as the device's mechanism rather than users with a mechanism inside.



The building's geometry, inspired by the Medway River's curves, features a wall dividing it into retail, production, and bath areas. By creating three sections of the soap, the idea emerged to implement different floorings based on the purpose of each area. Hempcrete and hemp materials are used throughout, including the wall. Biochar purifies river water for the baths and production. The 'coral pink' color scheme symbolises Chatham's bright future and the passion of the bath and workshop.



CURVED WALL 1:20 @ A3



CURVED SHOWER UNIT WITH SOAP WALL 1:20 @ A3

